

# Preparing the Workforce of the Future

Dawn Squires  
Head of Parks, Estates & Open Spaces  
Royal Borough of Greenwich  
September 2019

[dawn.squires@royalgreenwich.gov.uk](mailto:dawn.squires@royalgreenwich.gov.uk)

# Preparing the Workforce of the Future

- Setting a workforce development action plan
- Participating in the Apprenticeship Scheme and the National Graduate Development Programme
- Participating in the Greenwich Local Labour Programme (GLLP)
- Investing a cross our parks team

# Setting a workforce development action plan





# Setting a workforce development action plan





# Participating in the Apprenticeship Scheme and the National Graduate Development Programme



# Participating in the Greenwich Local Labour Programme (GLLP)





# Investing across our parks team





# Investing across our parks team





# Investing across our parks team



# Investing a cross our parks team

## Avery Hill's Litter Picking Pup

A post on Facebook by the owner of Maggie the Rottweiler gained some positive attention. Maggie helps to keep the park clean and tidy on her daily walks.

Avery Hill Park. Maggie will continue to clear up on a daily basis after those humans who litter (its especially bad after the weekend football training - just saying). Be more like Maggie, take your litter home or use the bins provided  
**#recycle #bemorelikemaggie #plasticwaste**





# Preparing the Workforce of the Future

Dawn Squires

Head of Parks, Estates & Open Spaces

Royal Borough of Greenwich

## Any Questions?

[dawn.squires@royalgreenwich.gov.uk](mailto:dawn.squires@royalgreenwich.gov.uk)

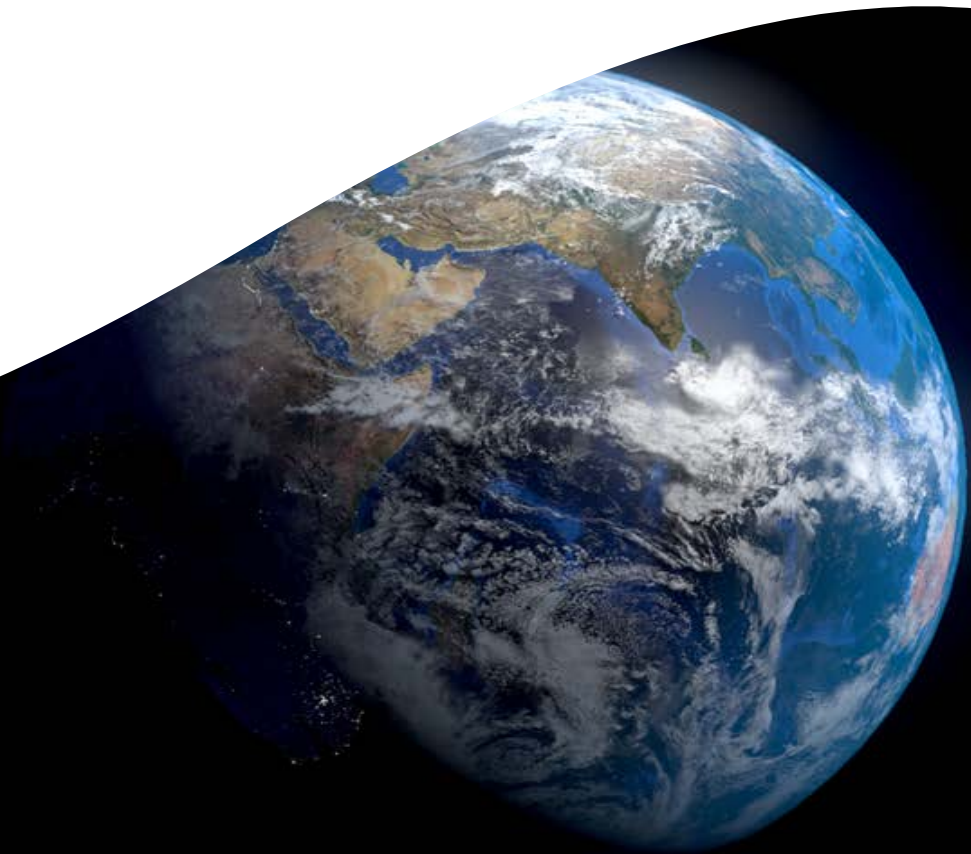
# Local Authority Climate Emergency Declarations

The background, purpose, examples, benefits and challenges of declaring a Climate Emergency

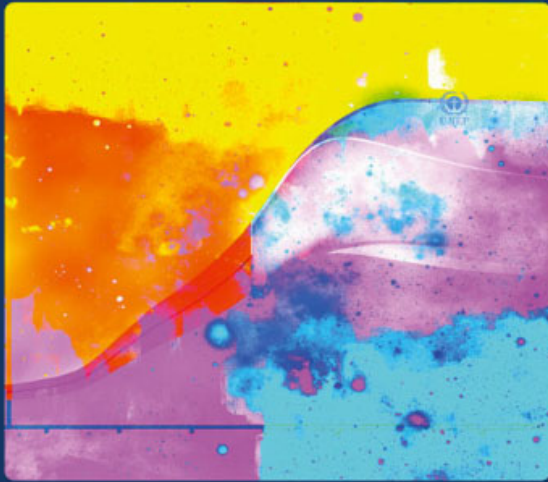
Charlotte Banks

Energy Research and Project Officer

APSE Energy



# Background



**ipcc**  
INTERGOVERNMENTAL PANEL ON climate change



## Global Warming of 1.5 °C

An IPCC special report on the impacts of global warming of 1.5 °C above pre-industrial levels and related global greenhouse gas emission pathways, in the context of strengthening the global response to the threat of climate change, sustainable development, and efforts to eradicate poverty.





# Purpose



- Has your Council declared a climate emergency?
- A major motivator for declaring a Climate Emergency is to galvanise support for the climate change agenda and set a clear target by which the council and/or locality will be carbon neutral
- In emergency situations dealing with the problem becomes a top priority, people temporarily set aside business-as-usual and focus intently on determining the safest course of action and doing whatever is required to deal effectively with a threat
- It will empower communities, encourage other councils to follow suit and generally help all of us treat the climate crisis as the emergency that it is
- Greenpeace poll - Two-thirds of people in the UK recognise there is a Climate Emergency

**GREENPEACE**

# Strategy



- You will all have been through the process of producing a strategy for your services – Parks and Open Spaces essentially but the same is true of all strategies and plans
- A Climate Emergency strategy brings all the work together – guides decision making, provides a pathway from point A to point B, advertises intent, sets the topic within the wider context of the council
- There needs to be a link to other policies in the council such as asset management plans, treasury mgmt. or investment plans, service plans for individual services, fleet management plans, corporate plan, the local plan
- All of these are linked across the Council and are related to the energy and climate emergency agenda
- Engagement, ideas
- Short, medium and long term



# Local Authority Case Studies



## Lancaster City Council

- Tree planting is one of the big things Lancaster and Winchester are looking at as part of carbon offsetting
- This meets other aims such as opportunities to promote walking and cycling within woodlands, education and working with schools, growing biomass, getting different groups engaged with planting
- However, how much carbon does a single tree absorb?

## Nottingham City Council

- 2028
- Most ambitious carbon neutrality target
- Already met energy strategy targets two years early
- This progress has been driven by a combination of the council's programme of renewable energy projects and a reduction in the city's energy demand, alongside substantial political backing

## Manchester City Council

- One of the first authorities to declare a Climate Emergency
- Net zero carbon city by 2038
- Plan developed by the Council's Climate Change Board with input from the University of Manchester's Tyndall Centre
- Plan introduces a science-based 'carbon budget' for the city that caps total emissions at 15 million tonnes from 2018-2100



# Benefits and Challenges

## Clear Action Plan

- Supported by and embedded in the local authority as a whole
- Point A to point B, milestones
- Project management skills, communication
- Political risk
- Asset review

## Local Authority Activity

- Fleet
- Clean Air Zones, charging infrastructure
- Energy Use
- Procurement
- Behaviour change
- Industries

## Renewable Energy

- Generation
- Local authority assets
- Economic and social opportunities
- Energy efficiency too!



## Consultancy Support

- Has your council declared a climate emergency?
- Do you have a plan to address it?
- Do you have the staff, capacity and expertise to put your plan into action?

APSE Energy was established to help inform and support local authorities in exactly this kind of situation

## Climate Emergency Handout

- This handout outlines the help that APSE Energy can provide to local authorities around the climate emergency agenda





# APSE Energy Publications



APSE Energy members free electronic and hard copies



# Local Authority Climate Emergency Declarations

Strategic and practical considerations for climate emergency declarations, targets and action plans



Help local authorities  
meet the climate emergency challenge

How APSE Energy can help  
local authorities meet the climate emergency challenge

apse energy



# How ECO3 funding can benefit local authorities

A simple guide to the Government's ECO scheme for energy saving home improvements



# Discussion

1. Has your council declared a Climate Emergency?
2. Has your authority set a carbon neutrality target?
3. Do you have a plan in place in meet this target?





**THANK YOU**



## Contact Details

**Charlotte Banks, Energy Research and Project  
Officer, APSE Energy**

**Email: [cbanks@apse.org.uk](mailto:cbanks@apse.org.uk)**

**[@apseevents](#) [@apsenews](#)**

**Association for Public Service Excellence**

3rd Floor, Trafford House  
Chester Road, Manchester M32 0RS

**telephone:** 0161 772 1810

**fax:** 0161 772 1811

**web:** [www.apse.org.uk](http://www.apse.org.uk)



INVESTOR IN PEOPLE



GB 11409



GB 11132



GB 14074



# Bristol and Bath Parks Foundation

Richard Ennion

Bristol City Council





**Share story of how & why we created a parks charity**

**Some key decisions along the way**

**What next?**





**Context**





breast cancer  
**now**

Leading the fight  
against dementia

Alzheimer's  
Society



saving the lives  
of people with  
blood cancer

**MOVEMBER**



**rainbows**  
hospice for children and young people



**DIABETES UK**  
CARE. CONNECT. CAMPAIGN.

**MAKE-A-WISH**



Great Ormond  
Street  
Hospital  
Charity

**WE ARE  
MACMILLAN.**  
CANCER SUPPORT



Save the Children



action for  
children



Marie Curie  
Cancer Care



**breast  
cancer  
care**



**BBC**  
Children  
in Need



**PROSTATE  
CANCER UK**



**Girlguiding**



**bowel  
canceruk**



IN SUPPORT OF  
**HELP for  
HEROES**



action medical research  
for children



**NSPCC**

**COMIC  
RELIEF**



**ageUK**

**Why are there no park charities?**



## The Partnership





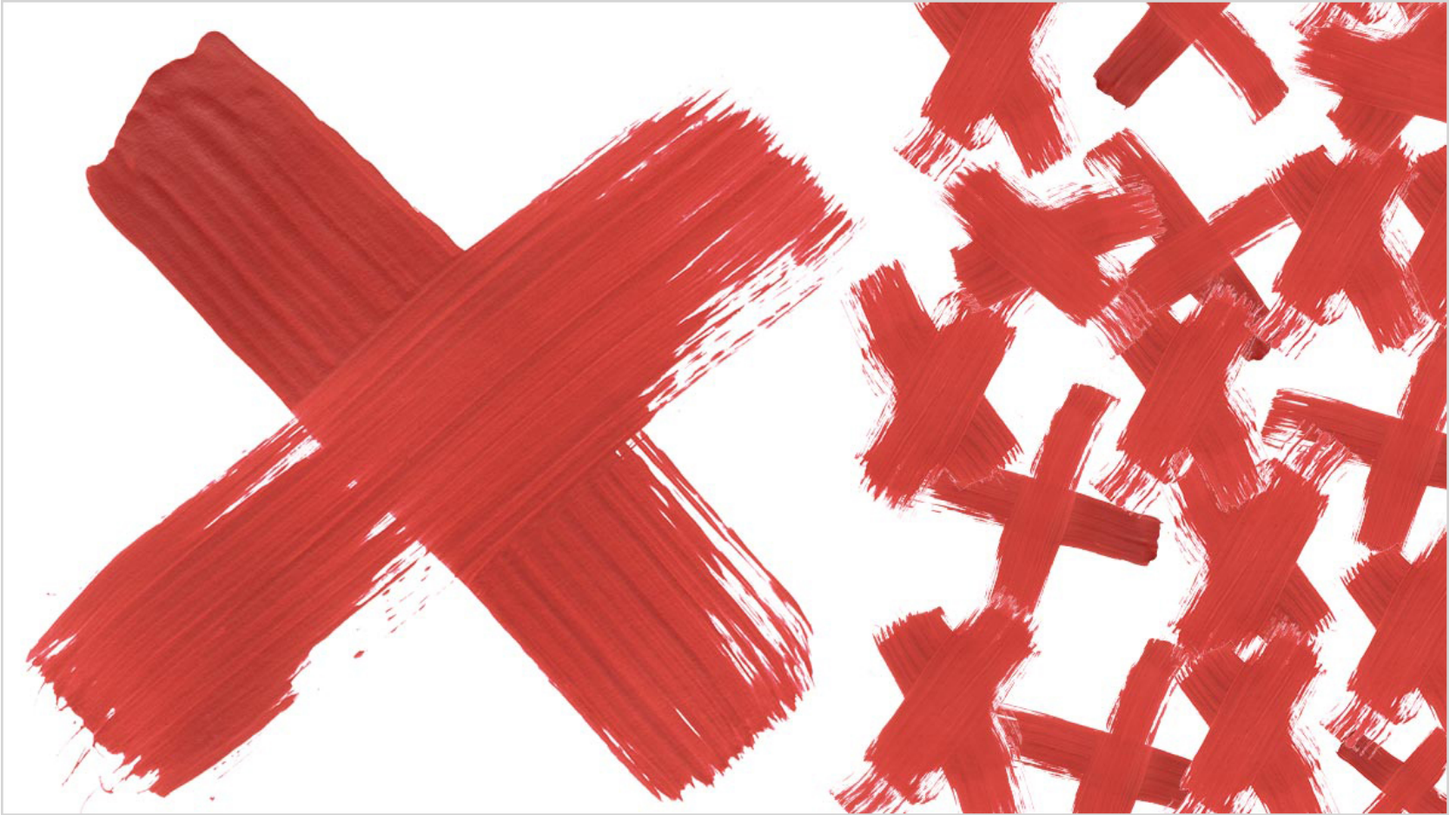
**Construction site**



# USEFUL

**Is this useful?**





**What it isn't**



## **Key decisions 1**

- Charitable purposes**
- Independent Board**
- Adding value not substituting**

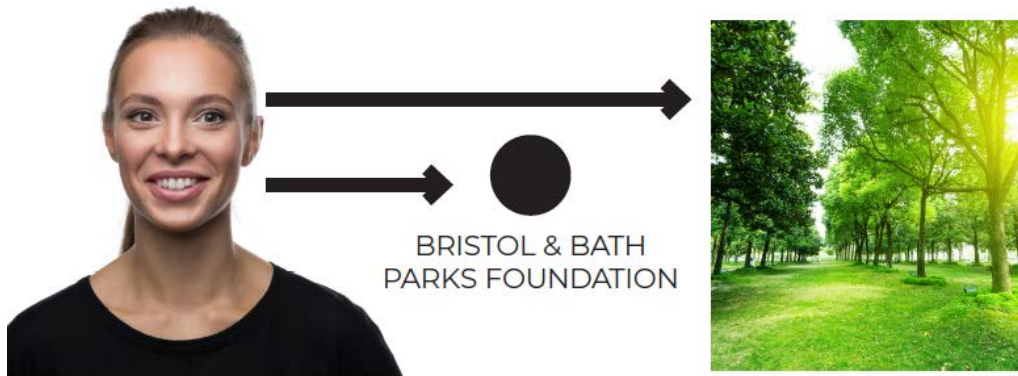




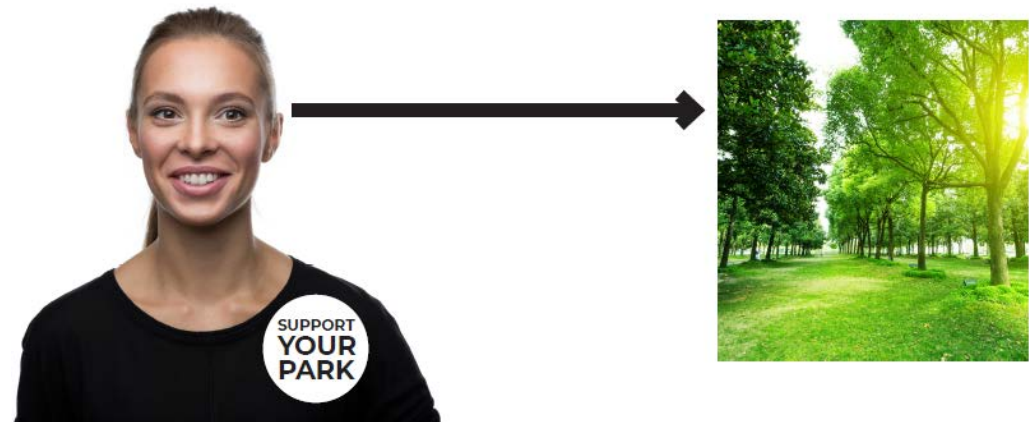
## **Key decisions 2**

- Brand identify**
- Trustees**
- Governance**

## Brand architecture Option 1: Monolithic



## Brand architecture Option 2: Product & endorsement



# Brand Architecture: Your Park





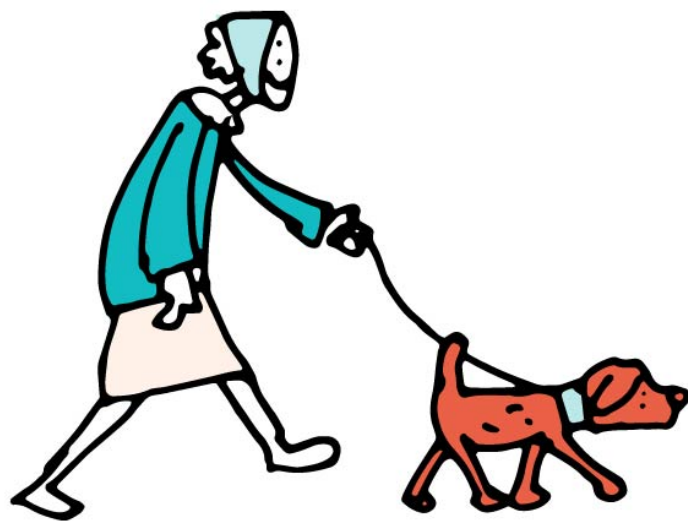
[www.bbpf.org.uk](http://www.bbpf.org.uk)



[www.yourpark.org.uk](http://www.yourpark.org.uk)

*Your chance to make  
parks better*

**Brand Architecture: focus on the Park**







**Trustees**







### **Key decisions 3**

- Soft launch**
- Project based funding model**
- Business planning approach**



# AAAND RELAXX!

BEAUTY-

AN INTRODUCTION  
TO THE WONDER  
OF GREEN  
SPACE

# SPORT

JUST HAD A TENNIS LESSON

A cartoon illustration of a person with a speech bubble that says "A BREAK FROM THE CITY - A BREAK FROM POLLUTION!". The person is standing next to a building labeled "GUY STUFF".

STICKS!

THE BANDSTAND

IT'S GOT  
TOGETHER

# What are Parks for?

A SAFE PLACE  
TO PRACTICE  
PLAYING THE SAX

ALL AGES TOGETHER

# What does YOUR PARK

What do you like about your park?

mean to you?

# What makes a perfect park?

Any good park memories?

Y'HEIGHT DUCK?

SO MANY FESTIVALS

celebrating

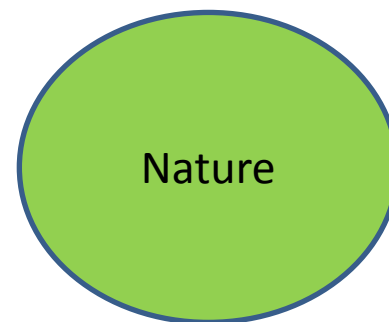
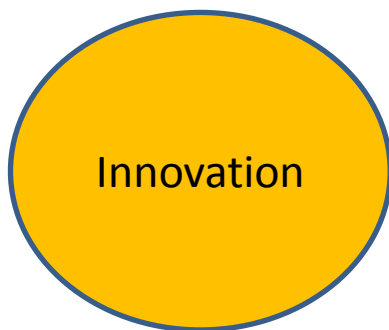
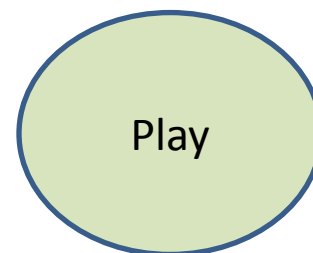
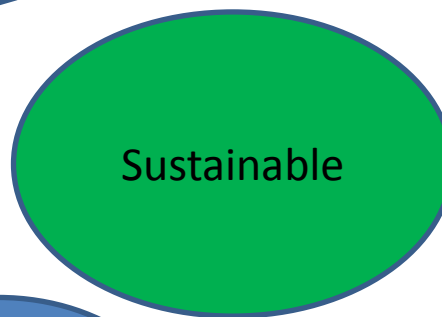
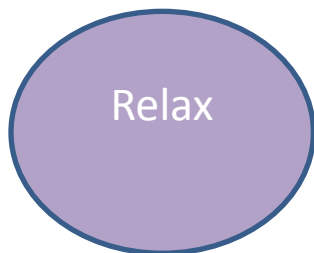
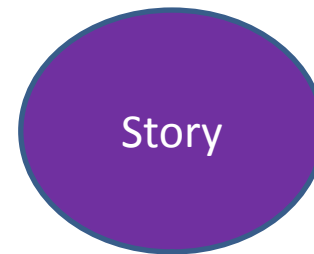
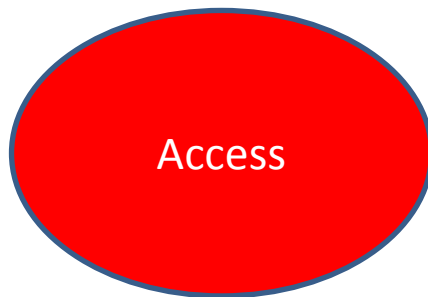
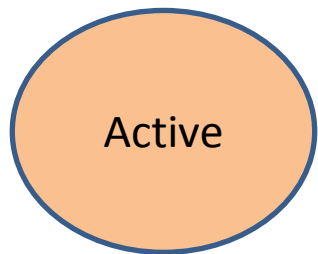
30 MANY  
FESTIVALS  
COMMUNITY

PEOPLE  
RESPECTING  
THEIR PARK  
LEAVE AS YOU  
FIND IT  
BETTER

2 CLEAR

LIKES A MANKY  
ON A GOOD RELIEF





A street signpost with two yellow directional signs. The top sign points left and the bottom sign points right. The background is a blurred city street at night with light trails from cars and city lights.

**Where Are**

**We Now?**









**Thank you**



# State of the Market 2019

## Parks and Green Spaces

### Results and Comments



# Why do parks matter?

- Increased recognition of importance of parks to mental, physical and social well-being of the nation.
- Ever increasing environmental value of parks, the enhancing biodiversity and contributing to natural capital.
- Increasing economic value of parks being recognised in regeneration projects, new build and promoting tourism.
- 37 million people more than 57 per cent of the UK population regularly use parks in the UK (Heritage Lottery Fund House of Commons Communities and Local Government Committee Session 2016–17)



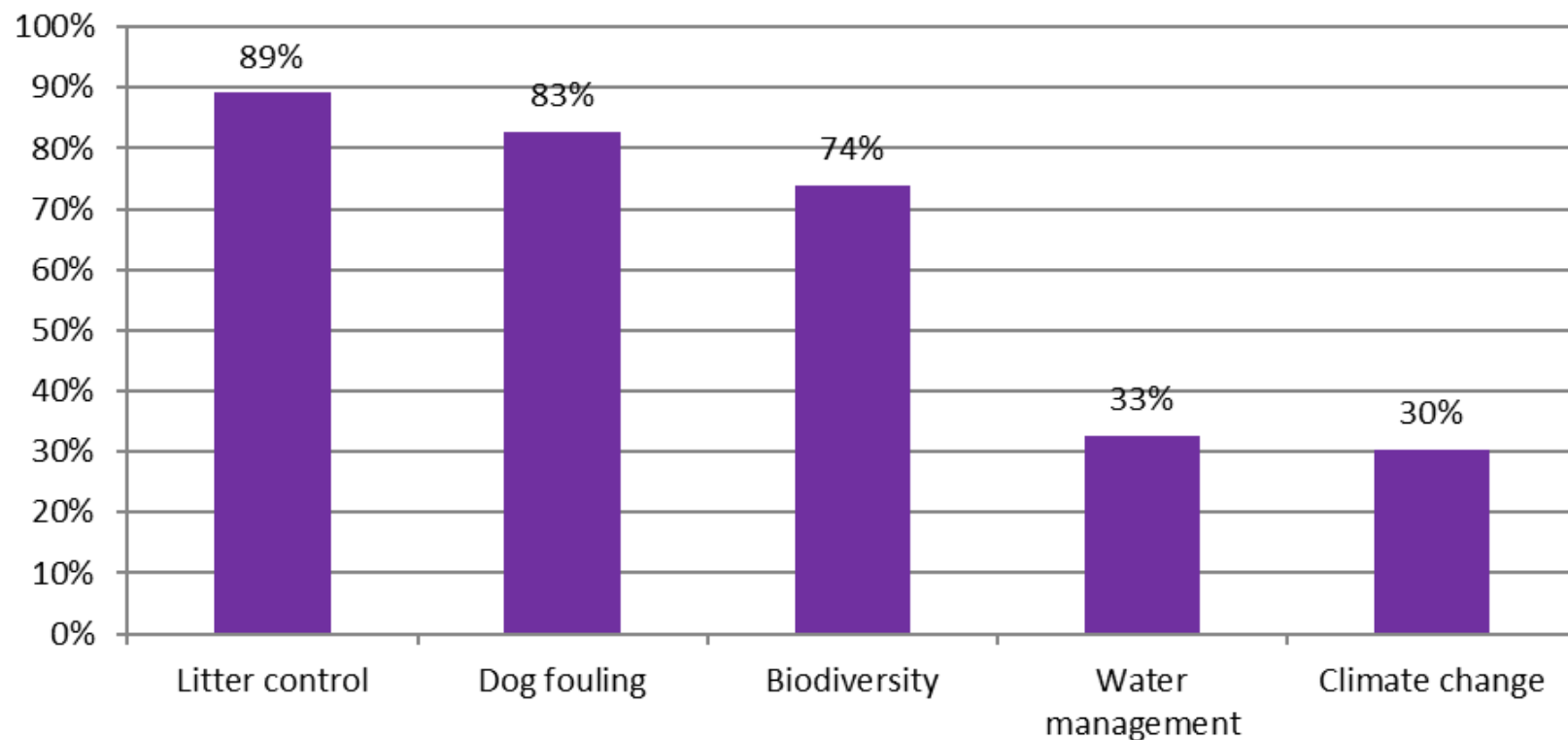
# **State of the Market in Parks and Green Spaces 2019**



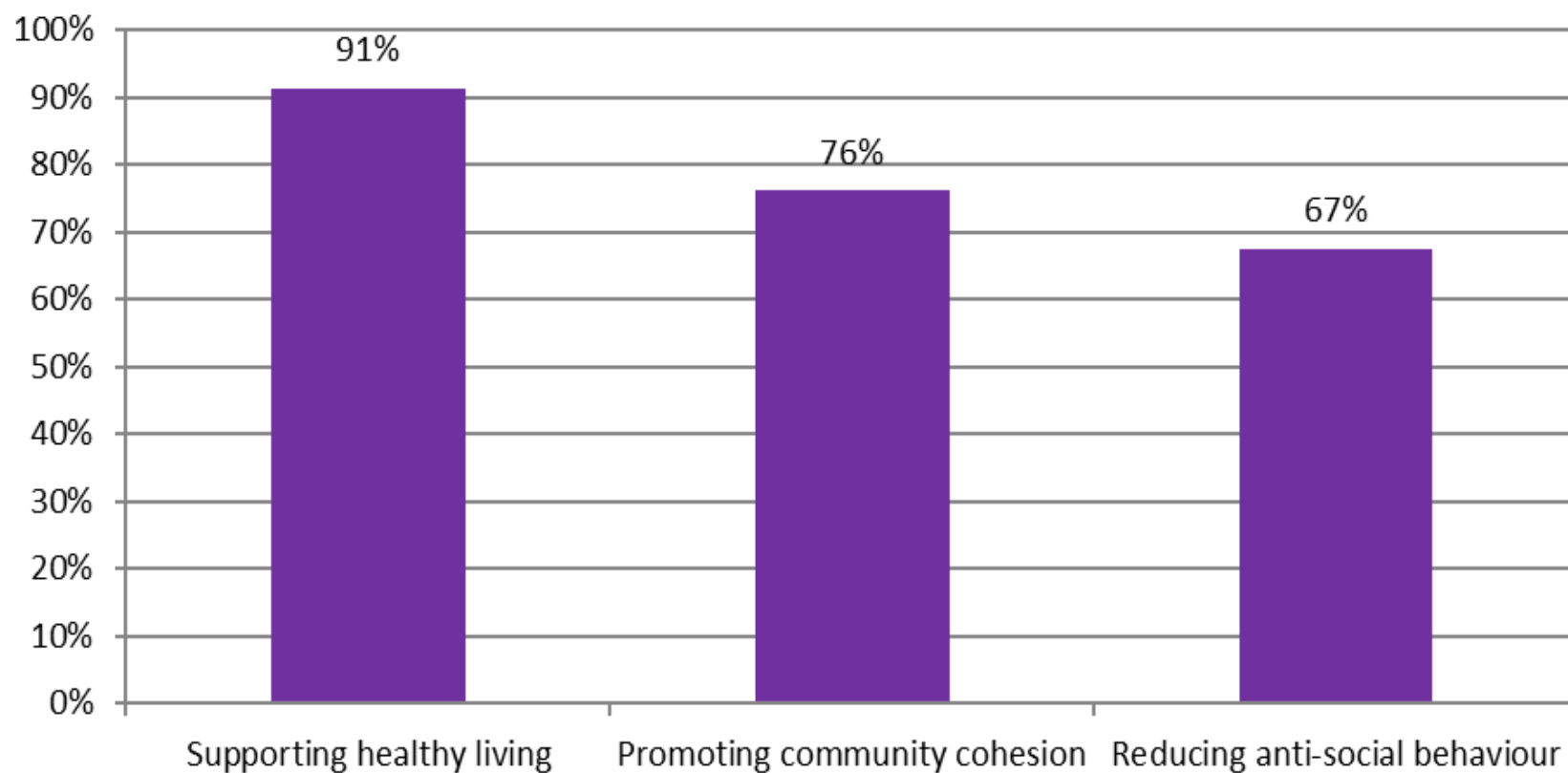
# Please give your opinion on the following statements

Answer Options	Agree strongly	Agree	Disagree	Disagree strongly	No opinion
The squeeze on public sector resources is affecting parks and green spaces disproportionately to other service areas	52%	30%	11%	0%	7%
Reductions in funding has resulted in a withdrawal of maintenance from some land and an increase in unmaintained land	52%	33%	15%	0%	0%
Lack of investment in parks and green spaces will have health and social impacts	87%	13%	0%	0%	0%
There is a clear link between parks/play provision and levels of crime/anti-social behaviour	35%	43%	9%	0%	13%
There's a limit to the extent to which volunteers can be involved in delivering parks and green space services	67%	31%	2%	0%	0%
The public should get free access to all parks	72%	22%	2%	2%	2%

### What environmental issues are a priority for your parks and green space service?



### What social issues are a priority for your parks and green space service?





# How do you expect the parks and green space budget to change over the next year?

## Capital expectations

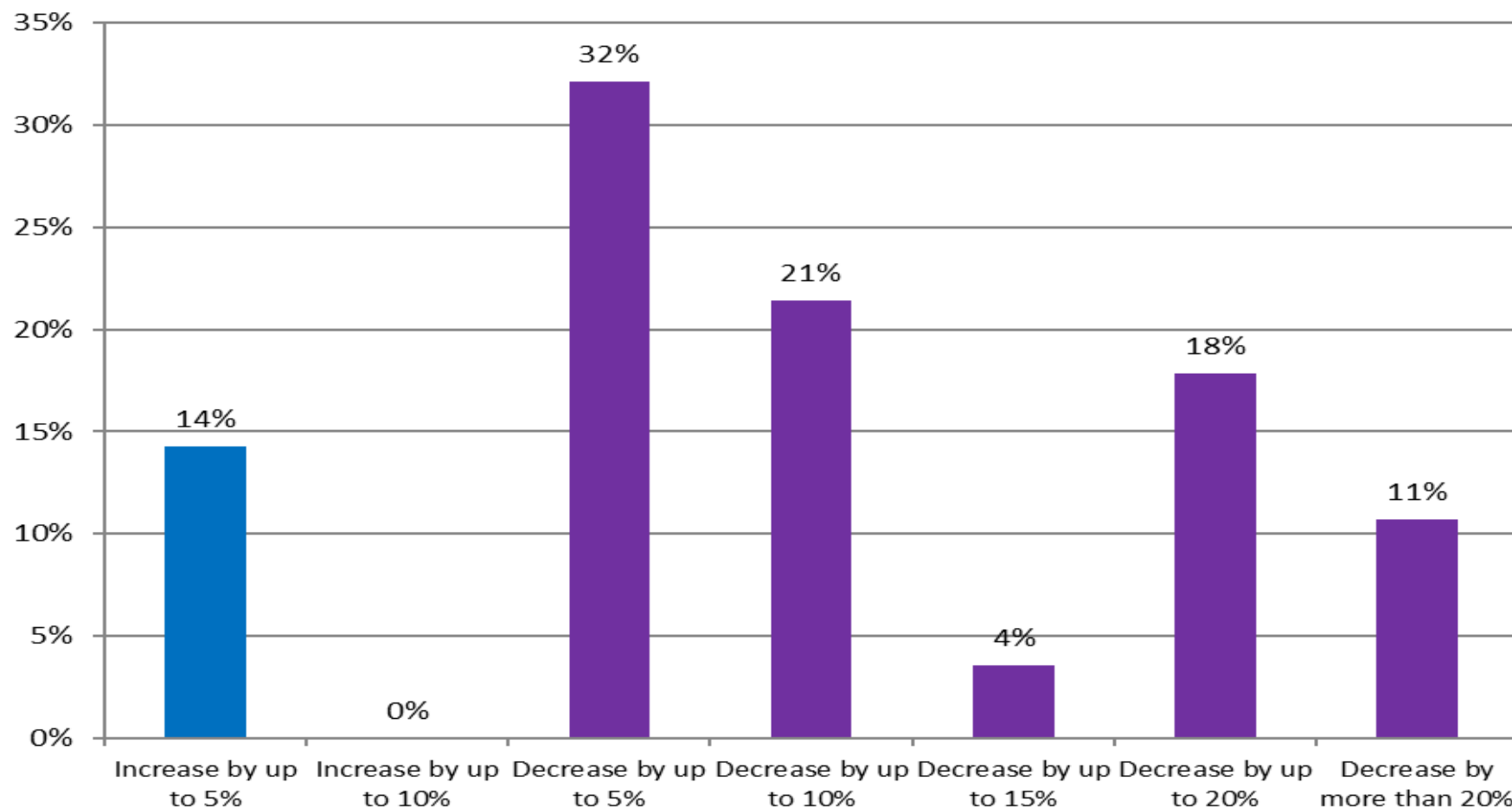
---

**43%****Expect an increase****57%****Expect a decrease**

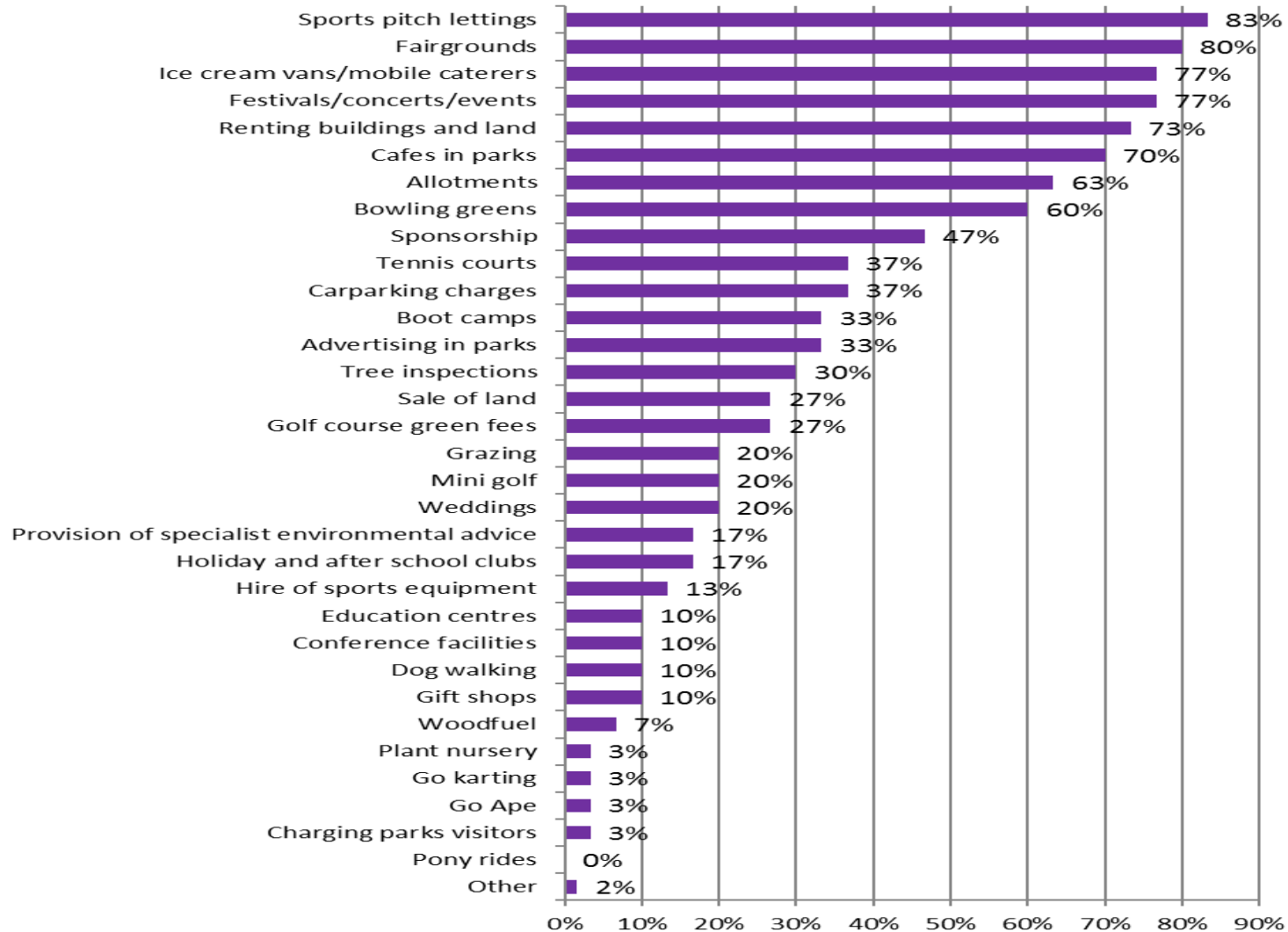
## Revenue expectations

**30%****Expect an increase****70%****Expect a decrease**

### What is your expectation of the level of funding in your service budget in the coming five years?

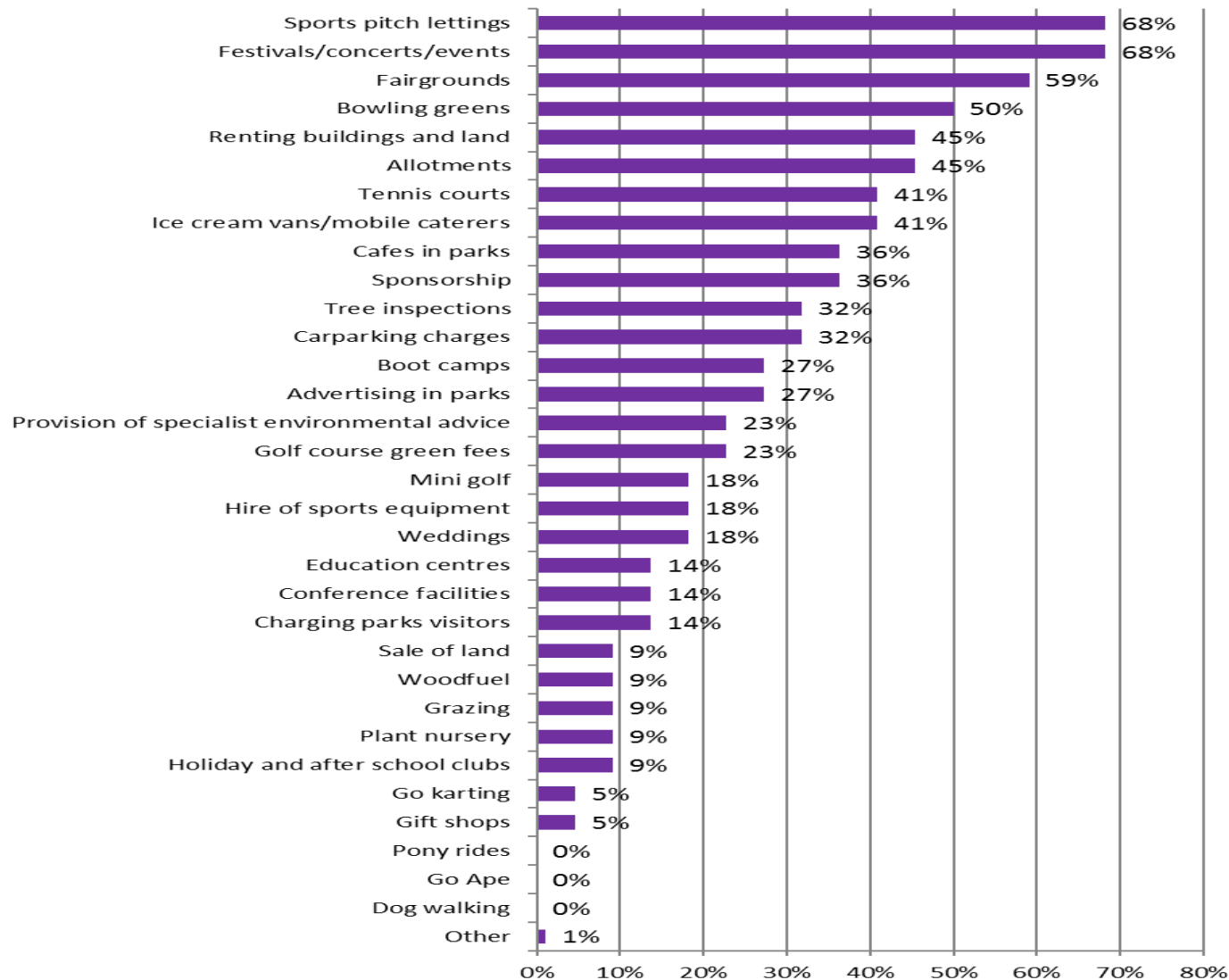


## What areas do you currently generate income in through fees and charges?

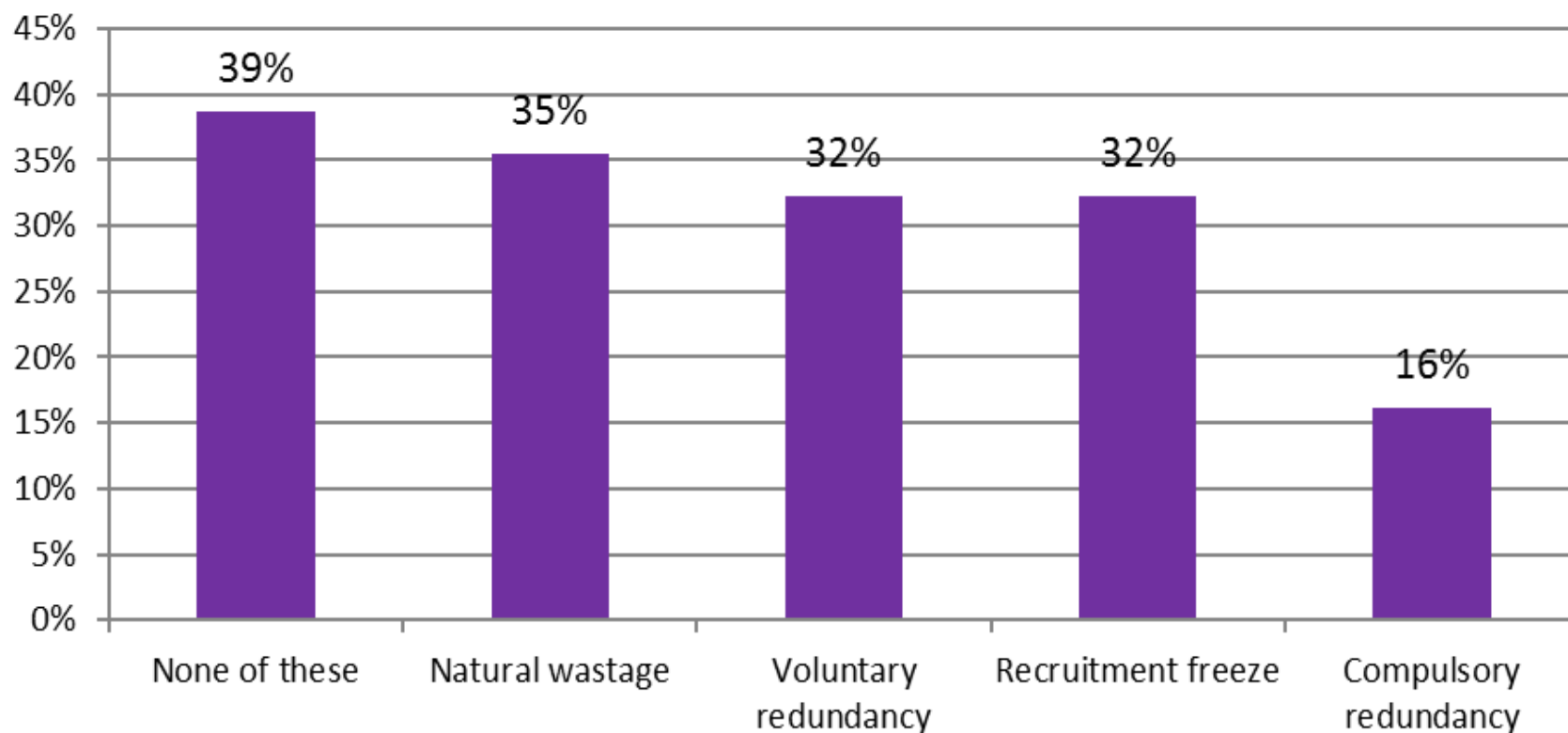




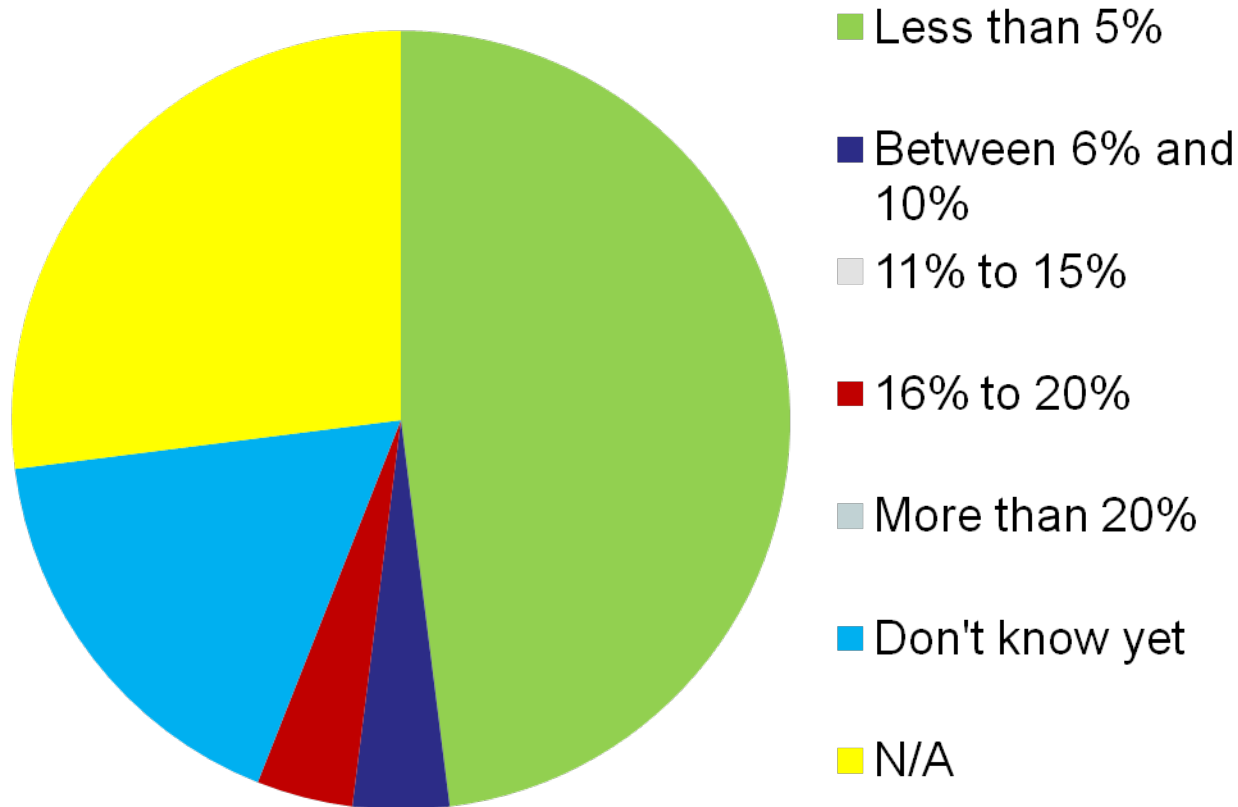
### What areas do you intend to increase fees and charges in over the next 2-3 years?



### Has or does your service intend to implement any of the following within the next 12 months:

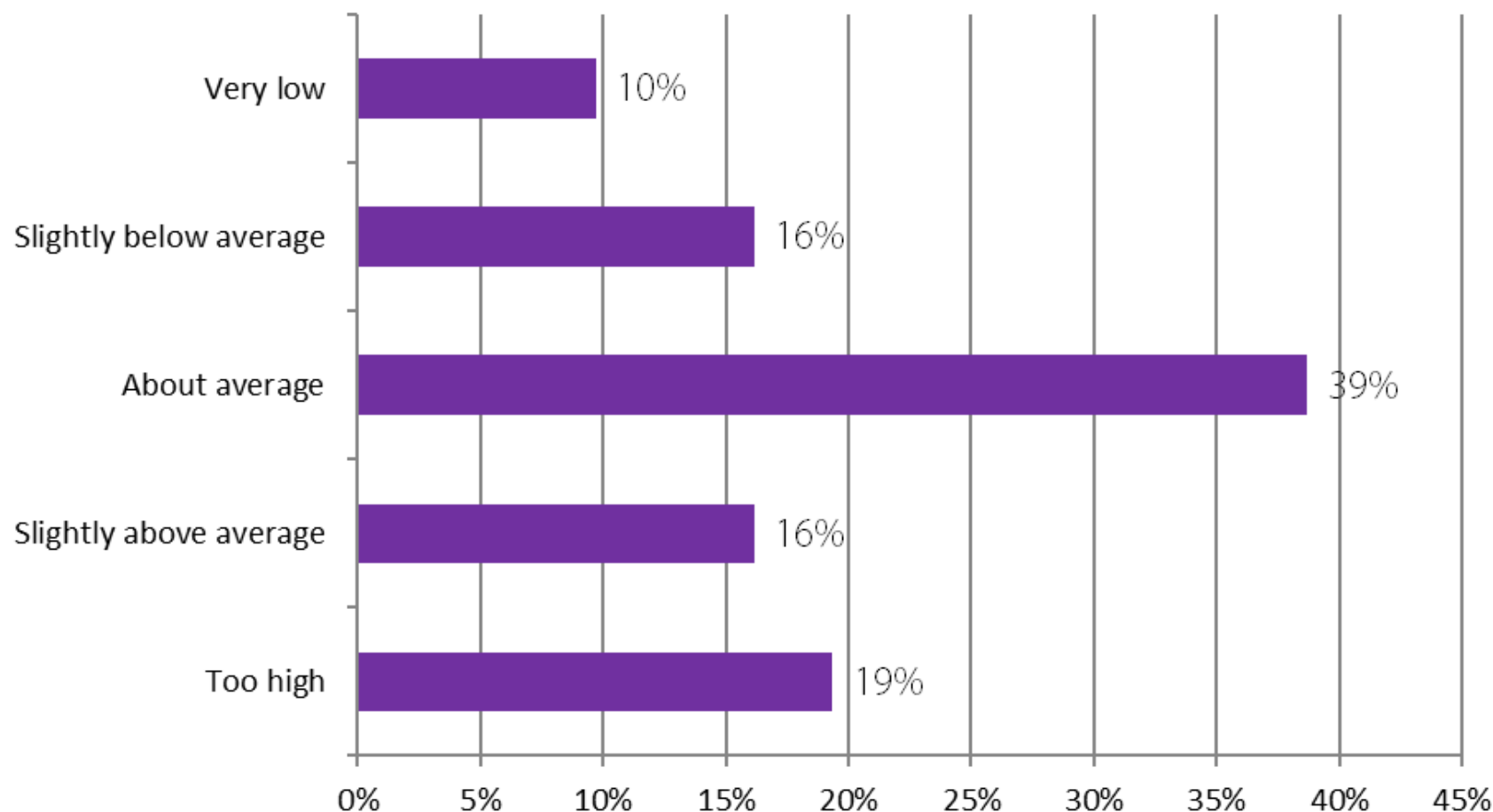


## If your service area is subject to workforce reductions, what percentage of staff do you expect to lose from the service?



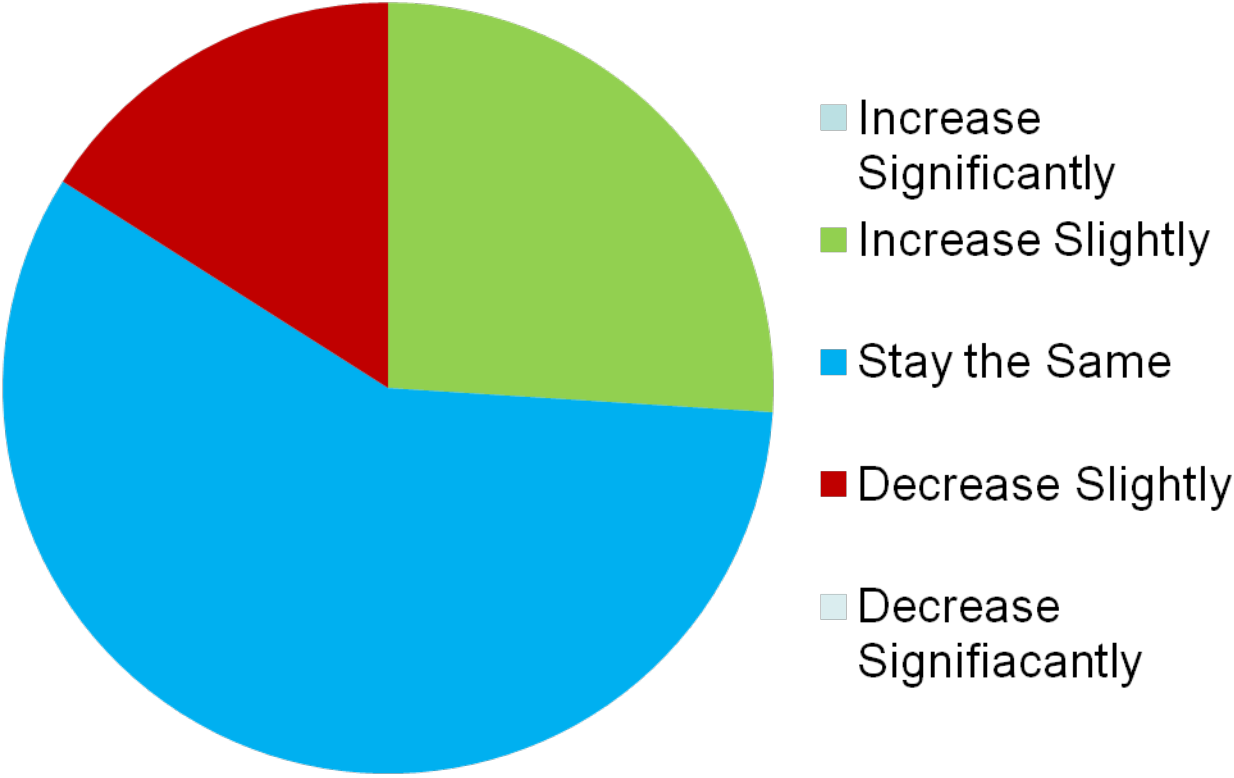


## Are staff absence levels at an acceptable level?

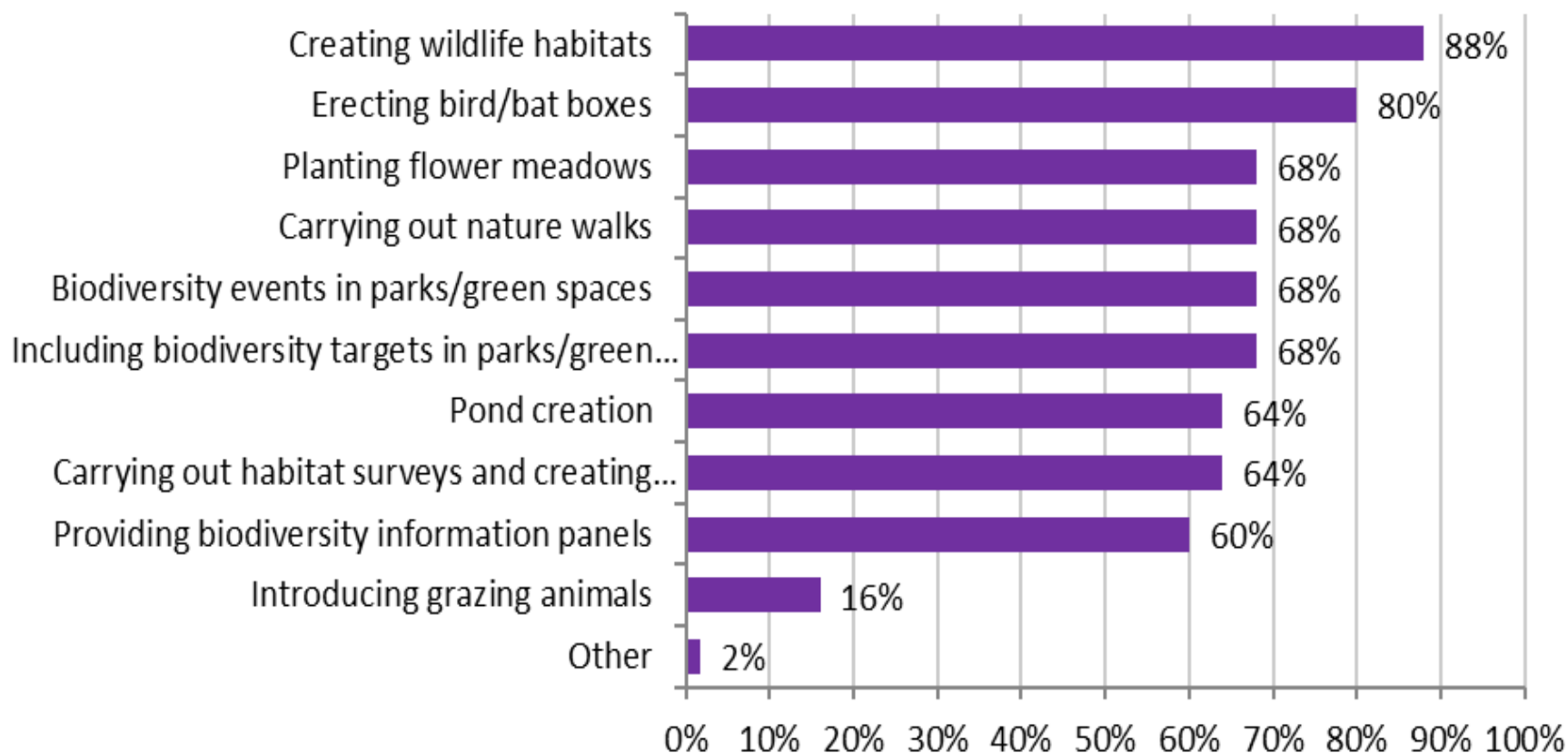




**Overall how do you expect the total number of formal parks (including playgrounds) to change over the next year?**

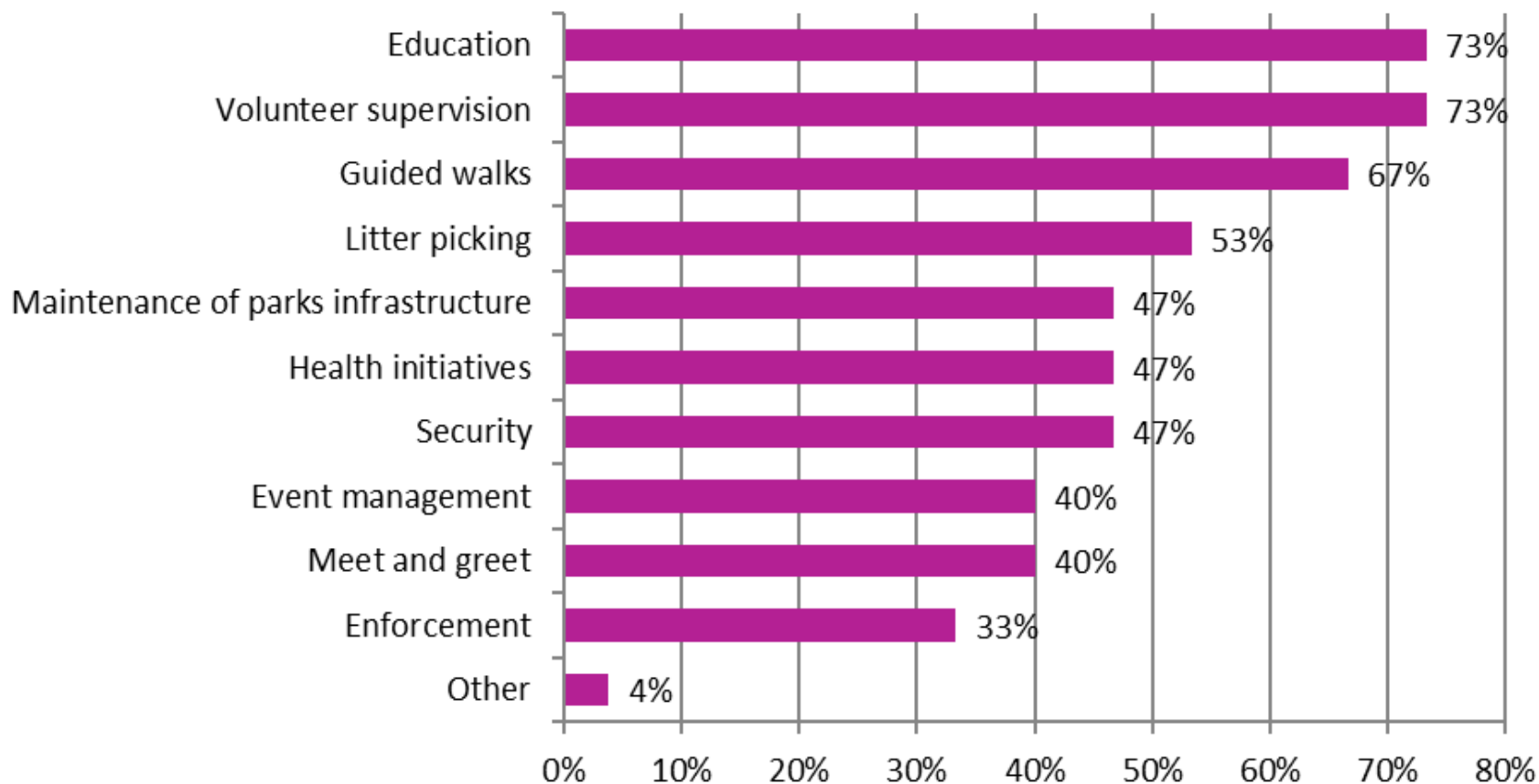


**If you make a specific provision for the promotion of biodiversity, which of the following have you carried out?**

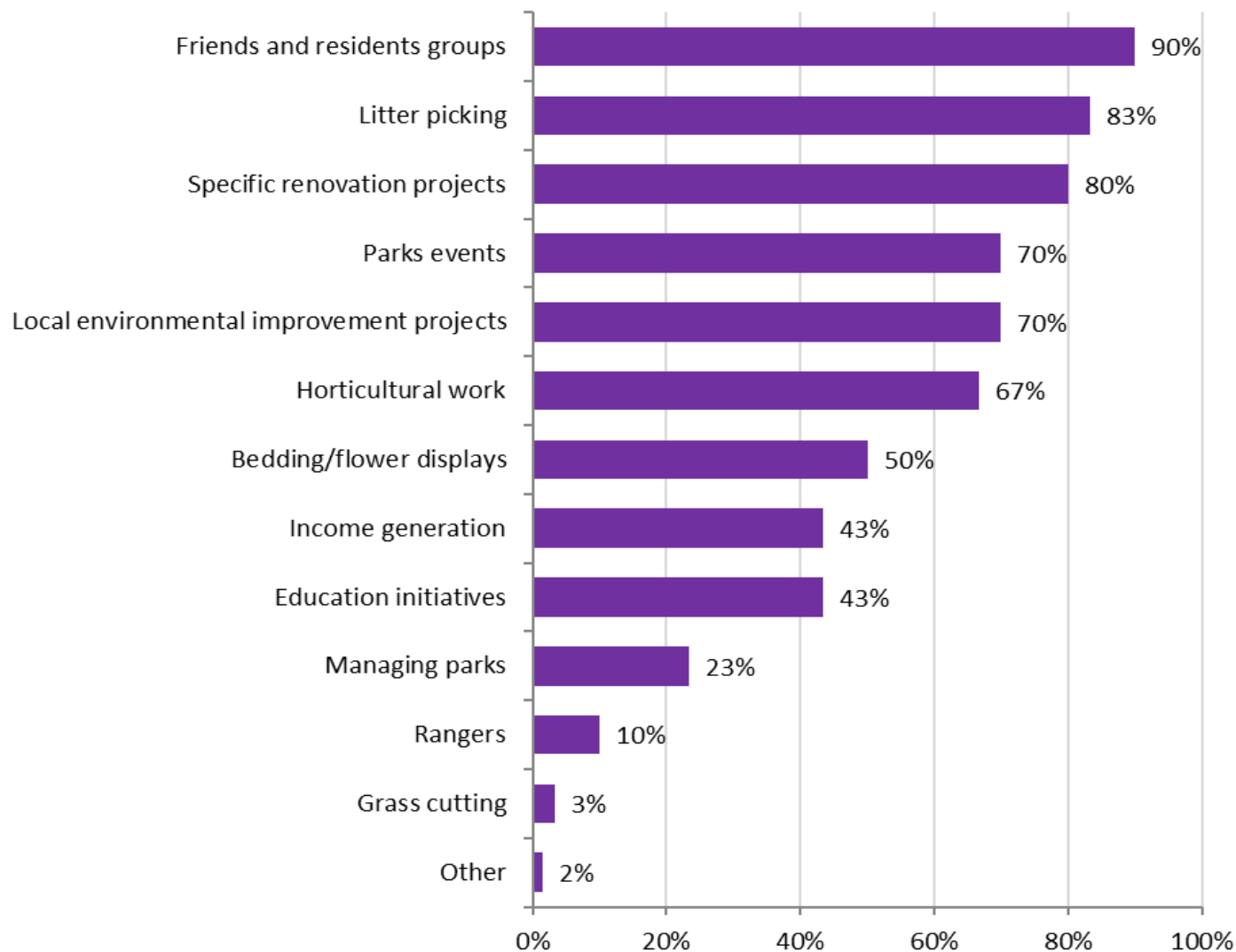




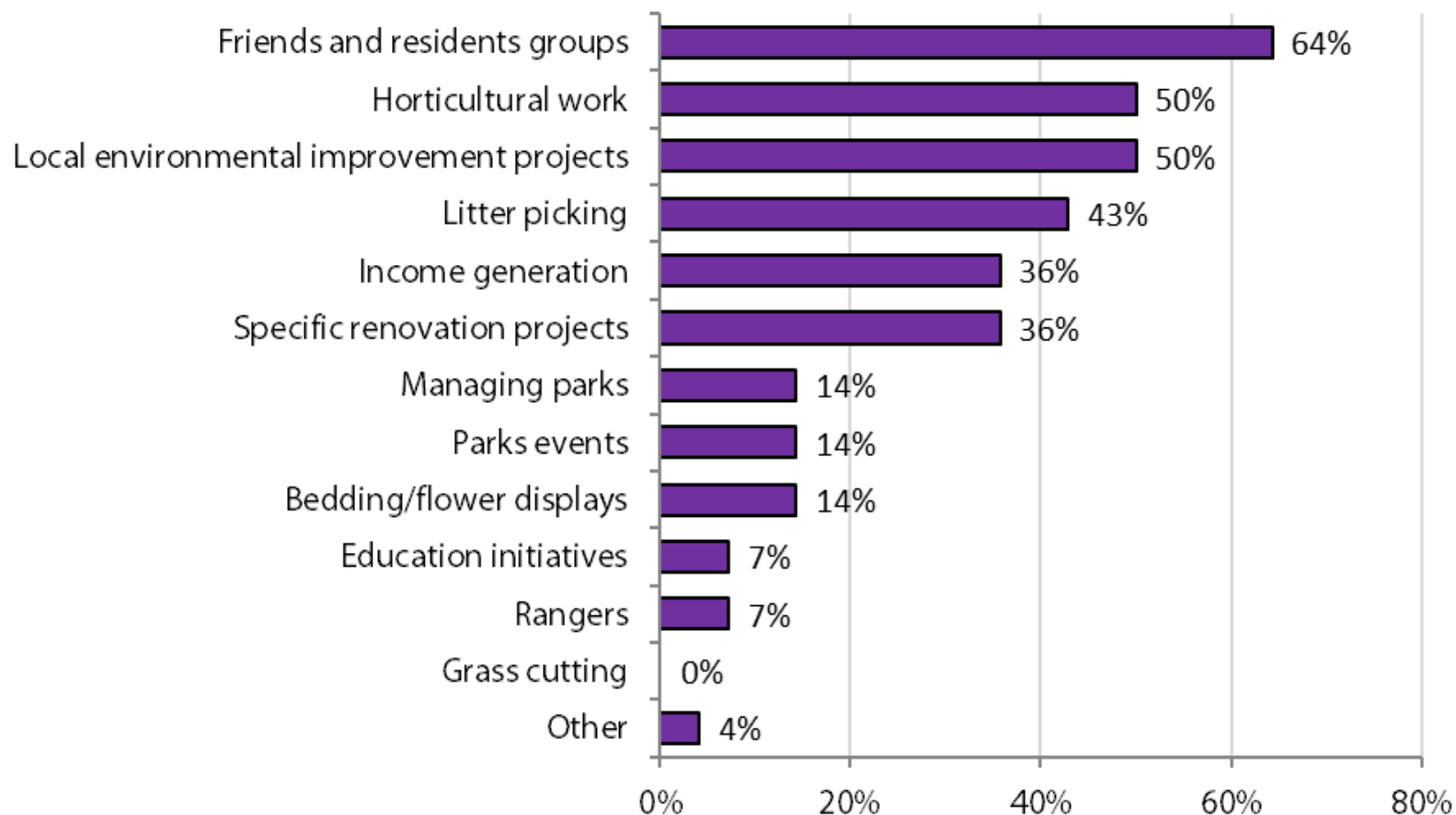
## What type of activities does the ranger service carry out?



### How are volunteers involved in the parks service?



## In what areas is community sector involvement increasing?





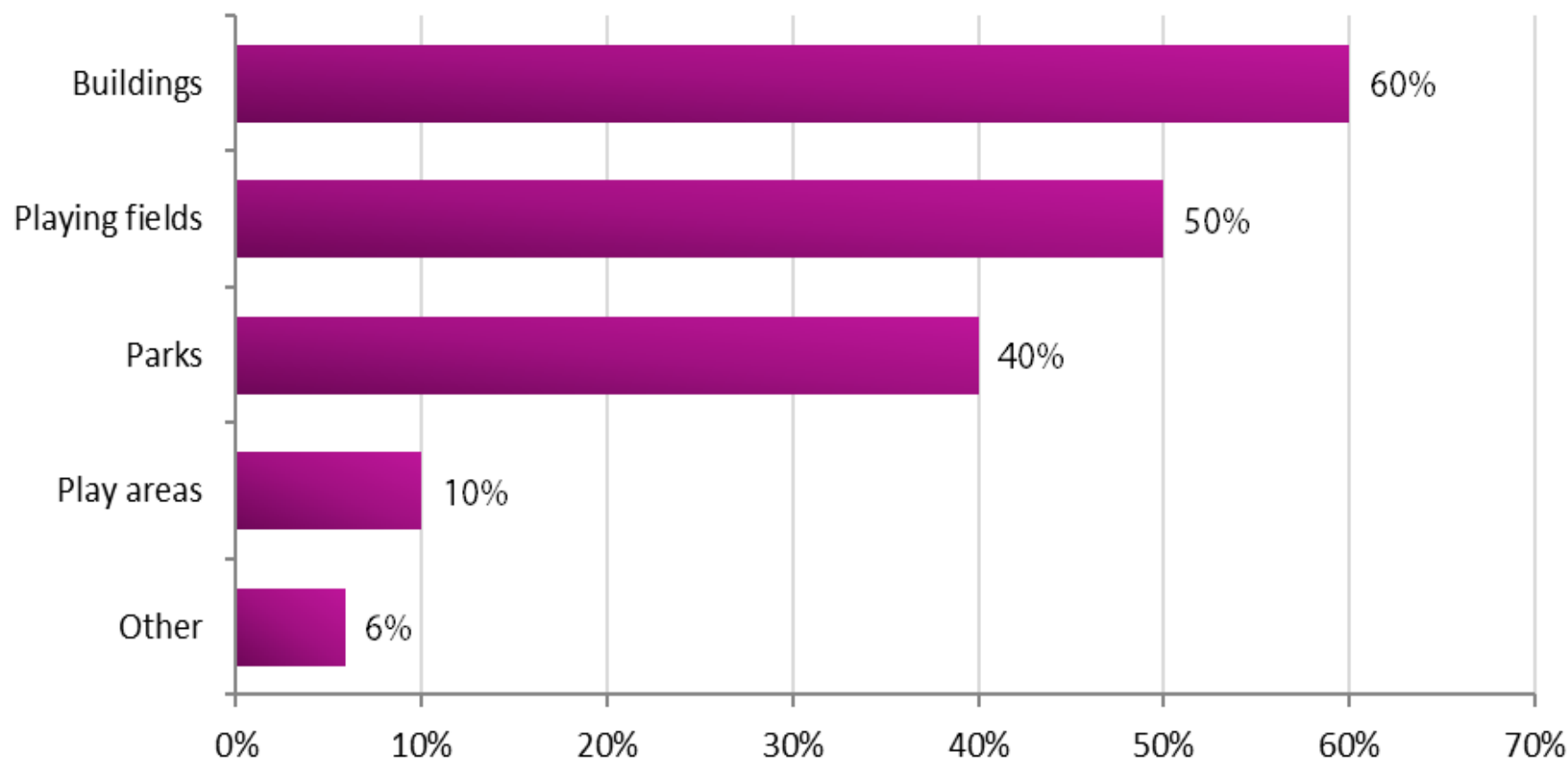


**During the past 2 years whether your council transferred any of its parks assets to community management/ownership**

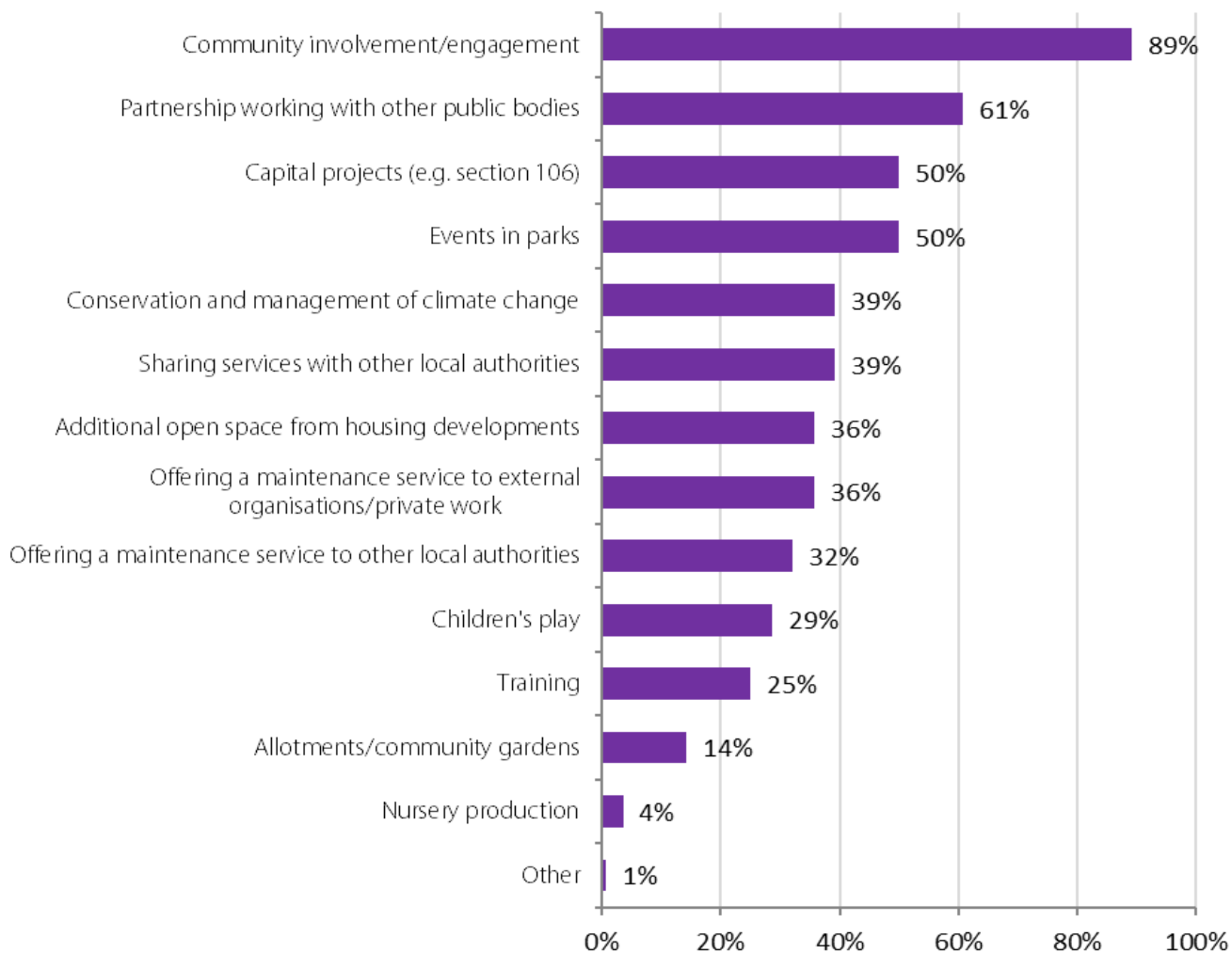
33% said yes, a rise of 10% on 2018

27% said their council is looking at this a 2% fall on 2018).

## What elements have been transferred to community management/ownership?

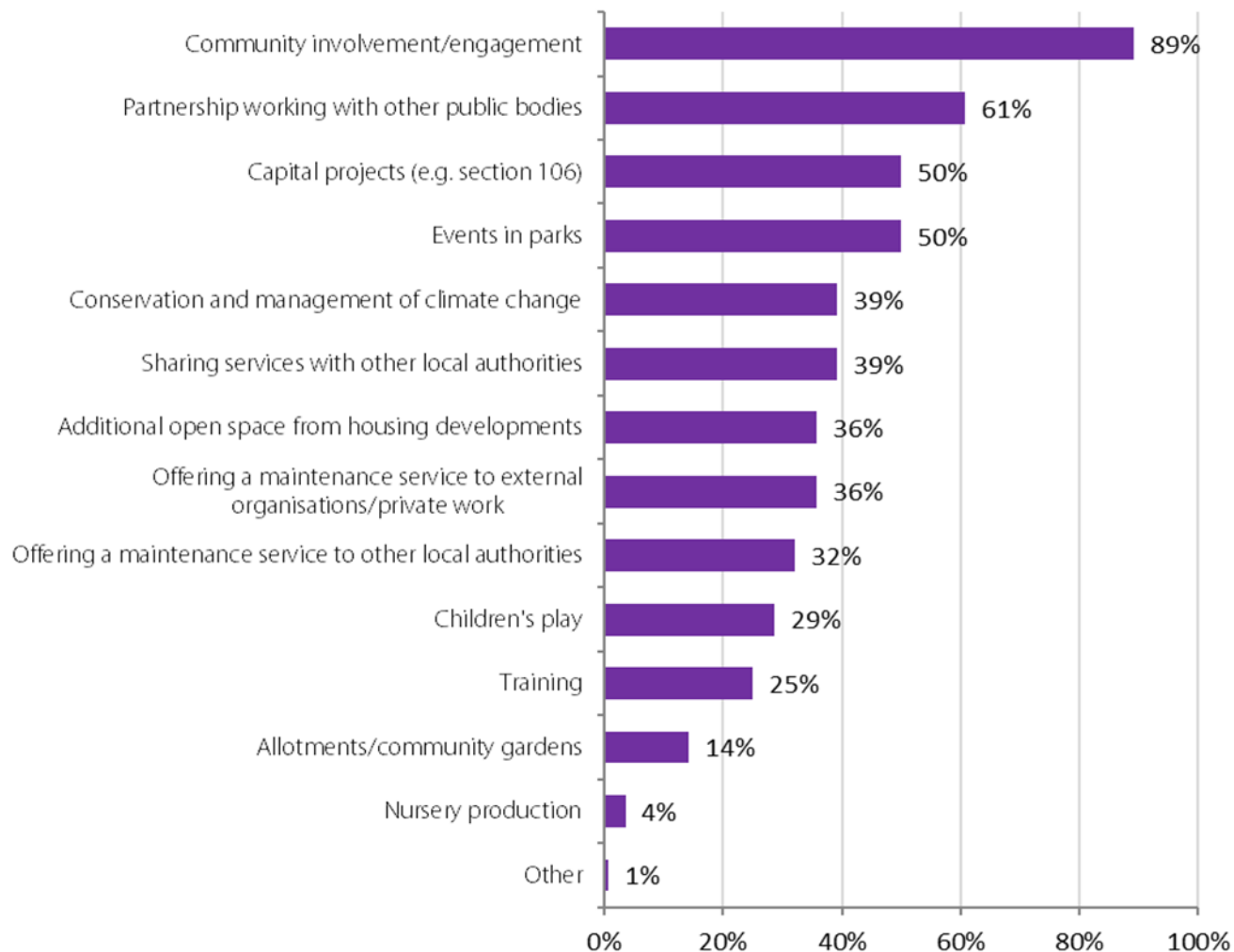


## Where do you see growth for the service over the next 12 months?





## Where do you see growth for the service over the next 12 months?



## Closing Comments

- Continued pressure on parks more self-funding, partnerships and transfer of assets are options which are being continually explored.
- The growing need to recognise the value of our parks and greenspaces both to public wellbeing and health and also to our local economies.
- Parks continue to provide innovative ideas on future management models and income generation opportunities.
- local authorities are continuing to deliver Innovative work, as part of their desire to maintain cleaner, greener and safer parks and green spaces, in spite of the impact of austerity.

# Contact details

**Abi Ademiluyi**

**Principal Advisor**

**Email: [aademiluyi@apse.org.uk](mailto:aademiluyi@apse.org.uk)**



# **LOCAL SERVICES**

# **LOCAL SOLUTIONS**

# **NEW MUNICIPALISM**

Delivering for local people and local economies