

COSLA's Response to COVID-19

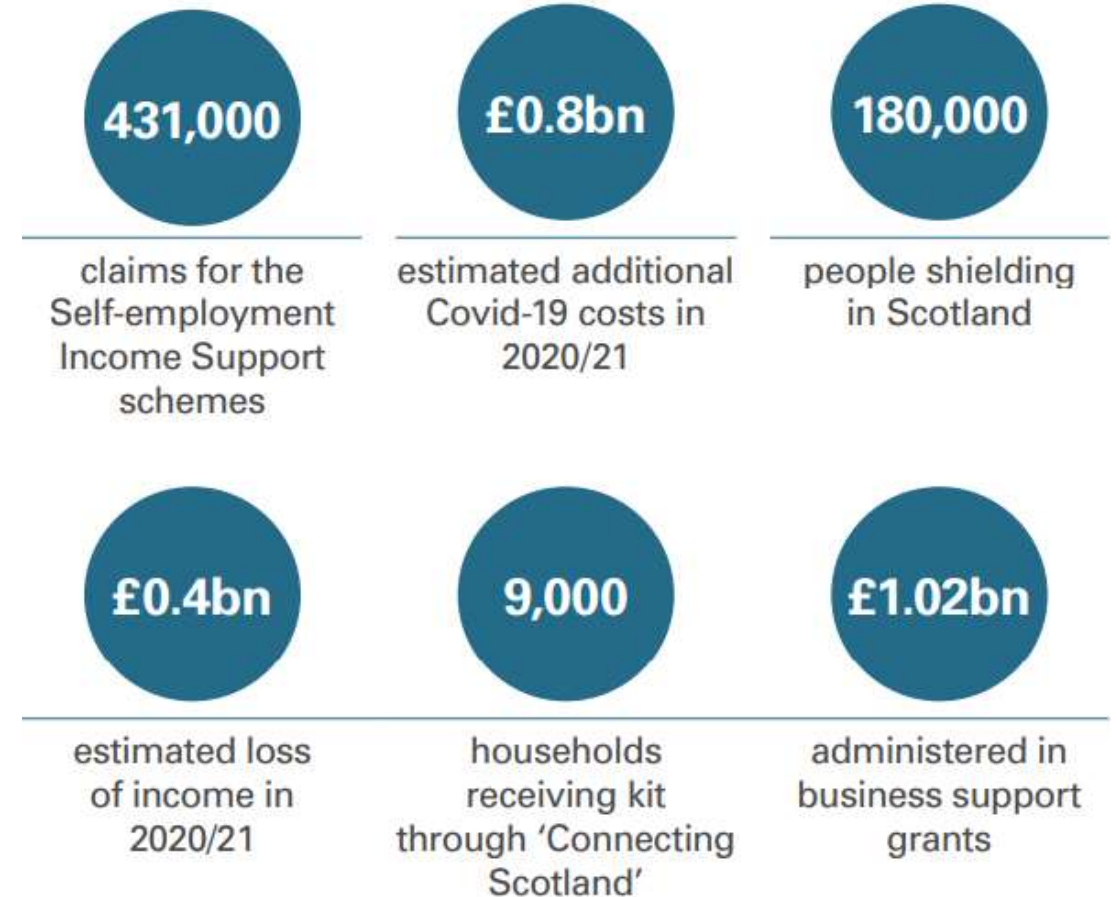
Sally Loudon

Chief Executive, COSLA

COVID-19 – Local Government response

“Councils have been at the centre of the response to the pandemic, supporting communities through these difficult times. They responded quickly and put their focus on maintaining service delivery and protecting communities.”

- Accounts Commission, Local Government Overview Report 2021



*From Accounts Commission Local Government Overview Report – May 2021

COVID-19 – COSLA response

COSLA has supported our members in the response to COVID-19 by:

- **Engaging** with the Scottish Government on a national level throughout the response
- **Championing** the role and efforts of Local Government in the response to the pandemic
- **Negotiating** to secure additional funding for Local Government
- **Leading** the development of policy in key sectors, such as health and social care and education
- **Working** with partners across Local Government to respond to emerging issues



COVID-19 – Lessons Learned

A key learning from the pandemic response is continued importance of the Christie Commission and its 4 pillars:

- Reforms must aim to empower individuals and communities receiving public services by involving them in the design and delivery of the services they use
- Public service providers must be required to work much more closely in partnership, to integrate service provision and thus improve the outcomes they achieve
- Priority given to expenditure on public services which prevents negative outcomes from arising
- The whole system of public services – public, third and private sectors – must become more efficient by reducing duplication and sharing services wherever possible

Blueprint for Local Government

COSLA launched the Blueprint for Scottish Local Government in September 2020.

The Blueprint is framed around six themes:

- Strengthening Local Democracy
- Funding Services and Communities
- Wellbeing – including Health and Social Care
- Education and Children and Young People
- Economy and the Environment
- Supporting Vulnerable Communities

The Blueprint has much in common with APSE's Local Government Commission report.



What Next?

Questions