



Cambridgeshire Energy Retrofit Partnership

Reducing fuel poverty through collaboration

Steph Salmon

Energy + Retrofit Manager, Cambridge City Council

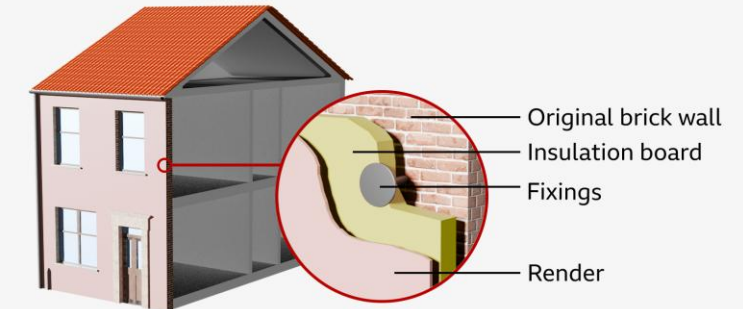


Why Retrofit, Why Now?

- Rising energy costs and cost of living pressures
- Poor housing efficiency driving fuel poverty
- Climate commitments at local and national level
- Fragmented delivery limiting impact



How external wall insulation works



BBC

RETROFIT IS NO LONGER OPTIONAL – IT IS FRONTLINE COST OF LIVING SUPPORT



Who Are We and What is CERP?



East Cambridgeshire District Council



- A collaboration of six councils
- Support from County Council and the CPCA
- Shared approach to domestic retrofit
- Focus on low-income and vulnerable households
- Joint delivery under Action on Energy
- From Information to Installation



Why Collaboration beat Competition

- Economies of scale – working together unlocked scale and speed
- Consistent resident experience and advice
- Shared skills and resources
- Stronger position for funding and partners
- Single, trusted brand for residents across Cambridgeshire and Peterborough
- Platform for growth and innovation



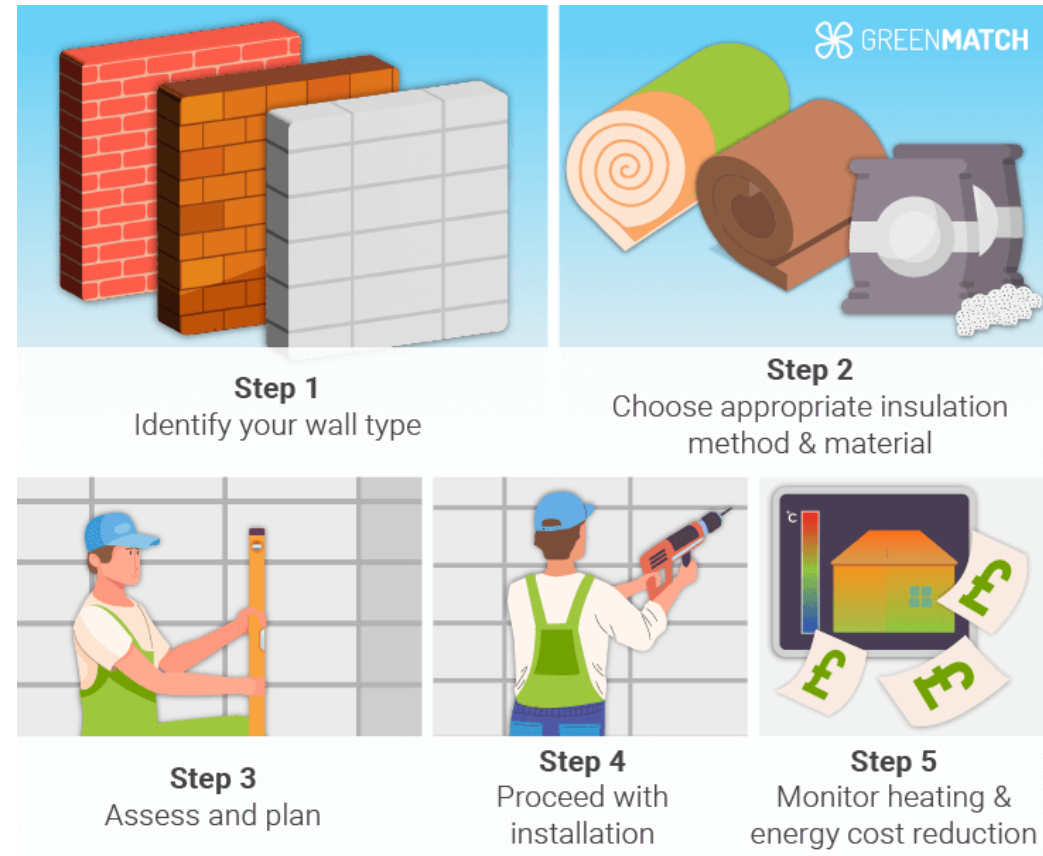
What We Mean by Retrofit

- Whole house, fabric first approach – outcomes focussed delivery
- Insulation, ventilation, heating upgrades
- Renewable and low carbon heating upgrades
- Health, comfort and bill reduction



The Retrofit Capacity Challenge

- Limited installer capacity
- Skills gaps and inconsistent quality
- Stop-start, short-term funding cycles
- Complexity for residents and suppliers



Our Response – The CERP Retrofit Framework

- Shared standards and specifications
- Multiple approved contractors
- Clear customer journey
- Scalable across all councils
- Enabled multiple contractors to deliver in parallel
- Built resilience into our delivery model by avoiding reliance on a single supplier

- Maintained momentum between funding rounds and reactive to funding opportunities



HUG 2 + CPCA 'Gap' Funding: Large Scale Retrofit Delivered at Pace

- Large scale retrofit for off-gas properties – **424** properties upgraded through HUG 2
- **71** homes under gap funding
- £8.8m total investment delivered
- Whole-house, fabric first approach
- Strong cross district collaboration
- High resident engagement and completion



What Actually Changed in Homes

- Measurable improvements, not marginal gains
- Clean heat installs - +43 SAP point uplift average
- Multiple energy efficiency measures – up to +49 SAP point uplift
- Clear EPC band improvements
- 279 households in highest deprivation bands supported



Retrofit Delivered: Jobs, Health and Cost of Living Support

- Lower energy bills and reduced fuel poverty
- Warmer, healthier homes
- Reduced pressure on health services

- Local economic and skills benefits: One Framework Contractor reported
 - £2.55m invested in local supply chains
 - 48 FTE roles supported
 - 100 apprentices trained
 - Contractor capacity grew by 65% during delivery



Governance & Partnership

- County Council and CPCA provide strategic oversight
- Local delivery by District
- Align retrofit with housing, health and climate goals
- Delivered entirely in house – with no managing agent
- Strong political support across partner councils



Outcomes & Lessons

- Collaboration enables scale and speed
- Frameworks unlock funding success
- Trust and simplicity are critical for residents
- Wider benefits strengthen the case



Future Focus – The Next Phase of CERP

- Scale delivery further - £8.57m under WHLG
- Strengthen local supply chains
- Embed health and social value metrics
- Move from projects to long term programmes
- Technical guidance for residents – “Retrofit Guide”
- Developing a Cambridgeshire wide Retrofit Strategy to align housing, health, climate and fuel poverty objectives





The journey from information to installation

www.actiononenergycambs.org

Steph.salmon@cambridge.gov.uk

Twitter - @ActionOnEnergy

Instagram - @actiononenergycambs

Facebook - Action on Energy

