

From Vision to Action: Coventry's Strategic Energy Partnership

APSE



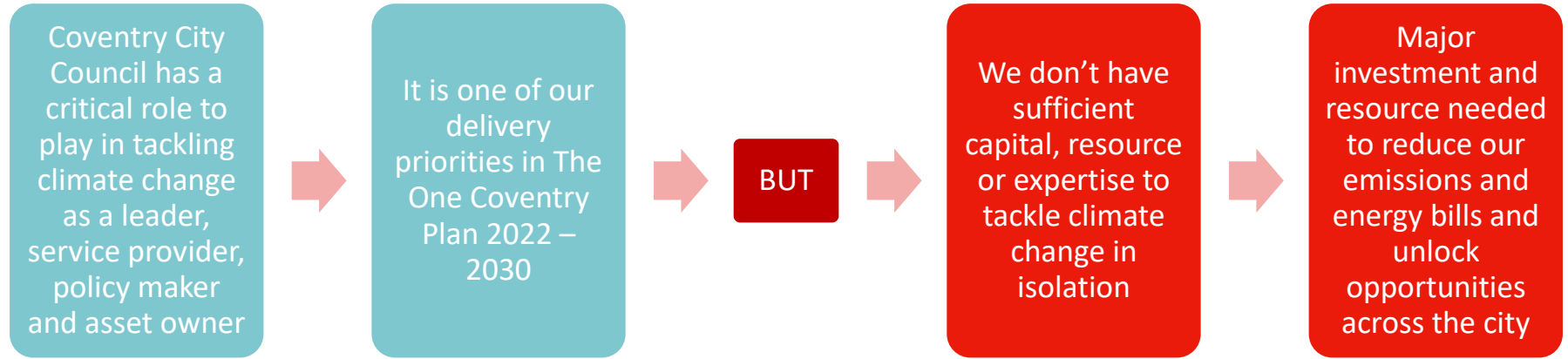
Welcome to our Partnership



From vision...



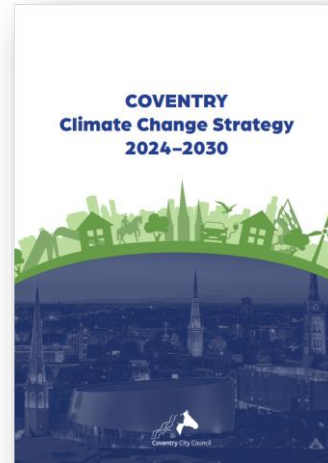
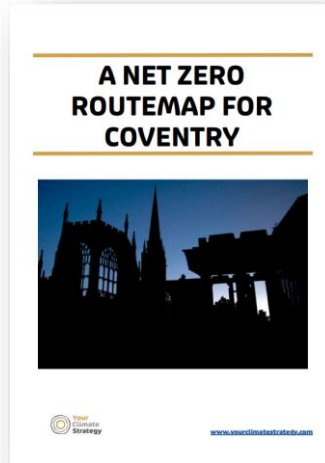
Why a Strategic Energy Partnership?



Coventry-specific challenges:

- 18.9% of Coventry households live in low-income, low energy efficiency households, compared to just 11.4% nationally.
- A significant proportion of Coventry's housing stock is old, terraced buildings where some decarbonisation interventions can be challenging (e.g. air source heat pumps and electric vehicle chargers).
- 96% of businesses in Coventry are classified as SMEs (Small Medium Enterprises) – for which access to capital is a challenge, and decarbonisation is less likely to be a priority.

Policy and strategy context

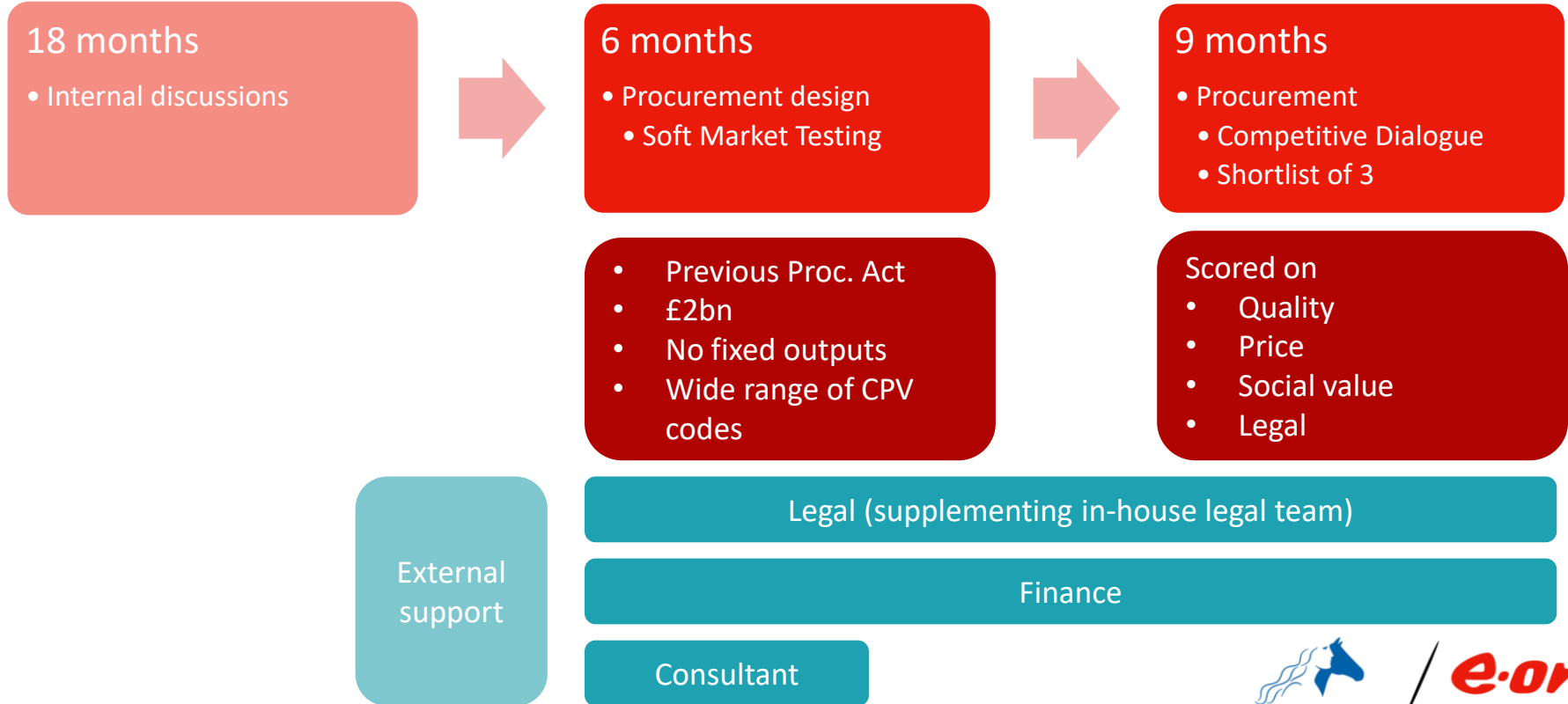


<https://www.coventry.gov.uk/theonecoventryplan>

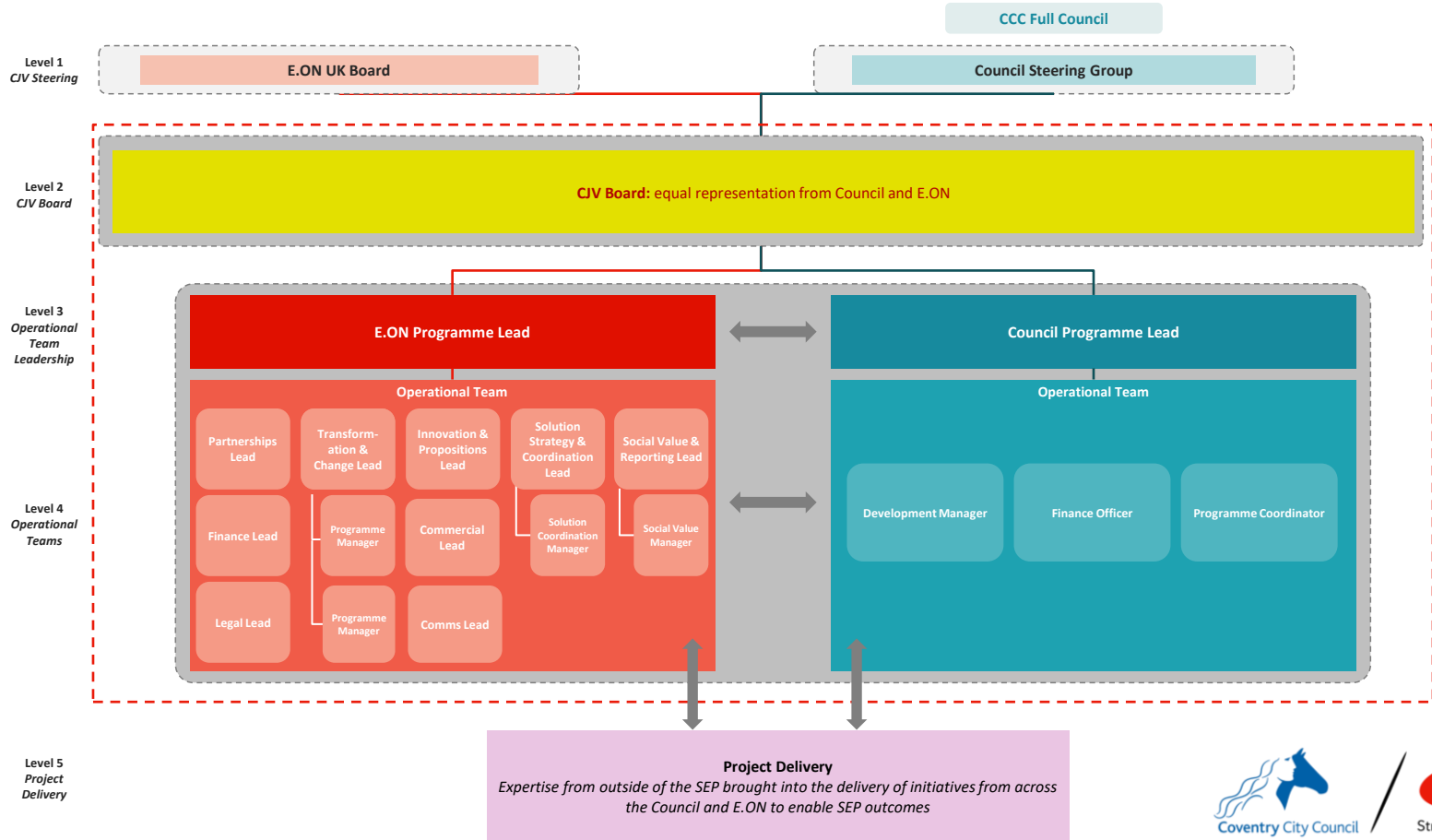
<https://www.coventry.gov.uk/downloads/download/7469/net-zero-carbon-route-map-for-coventry>

<https://www.coventry.gov.uk/climatechangestrategy>

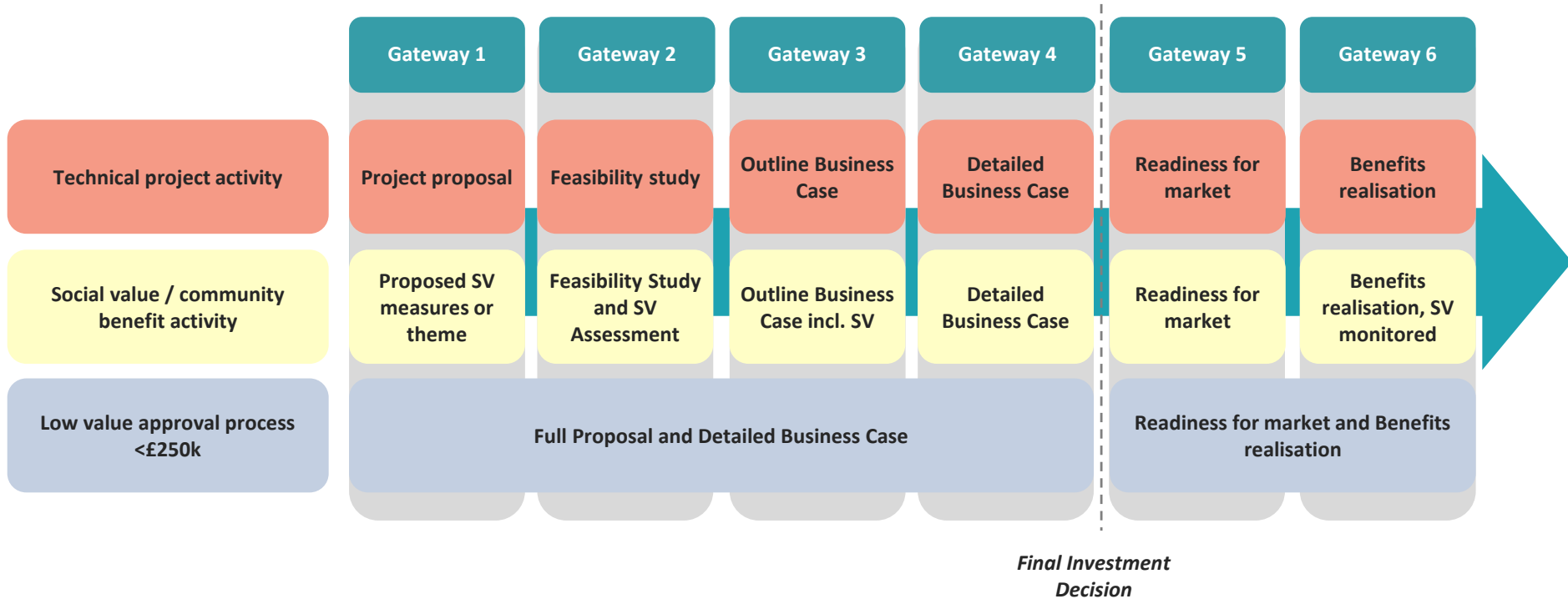
Procurement



SEP structure



Gateway process



E.ON's Commitment to the Partnership

As Coventry's strategic energy partner, E.ON has made commitments to drive the development and delivery of projects within the city and to contribute to a greener and healthier Coventry. These overarching principles and commitments are designed to enable the Partnership's success:

- Our **dedicated partnership team** brings expertise, knowledge and skills from across the E.ON Group to the Partnership complementing those of the Council
- **Expertise** from both organisations is brought in to help develop and deliver projects and E.ON has committed to demonstrating **value for money** in the development and delivery of all projects
- The creation of an **energy masterplan** for the City with a vision of the future Coventry and clear direction of travel for the Partnership's activities and project pipeline
- We have dedicated innovation capabilities and activities supported across E.ON Group and funded as part of the Partnership enabled through a specific **Innovation Fund**
- Creation of a **Community Benefit Fund** which helps deliver outcomes that benefit the environment and community
- We are committed to ensuring there are **social value commitments** for each project benchmarked to at least industry average level of contribution, unless agreed through the Gateway process
- We are committed to recruiting and training at least 25 **apprentices** in the first 5 years of the partnership in response to growing demand for professionals in Coventry's renewable energy sector and to support the delivery of projects in the city

E.ON's goal is to help cities overcome constraints to deliver energy projects that boost the local economy, improve resilience and reduce emissions. This is done based on the specific needs of the city rather than a one size fits all approach

...To action



Four Strategic Themes drive the partnership forward and help to deliver our mission

*“A **greener and healthier** Coventry. A city led by a **focus on energy sustainability**, supporting a thriving **local green economy** and providing a better **quality of life for all**”*



Clean Local Energy

- Increase the **volume of locally generated** green energy
- **Reduce exposure** of residents & businesses to global energy market
- Position Coventry as **sustainable and investable**



Jobs & Skills

- Bolster the local energy sector's **job market**
- Develop **energy-related skills of the future**
- Establish a strong **local supply** chain whilst promoting of green jobs
- Demonstrate our strong **ED&I** principles



Innovation & Scale

- Develop a series of **scalable, energy innovation projects**
- Test **new technologies** to decarbonise energy, improve resilience, and reduce energy bills
- Contribute to Coventry's **circular economy**



Community Benefit

- Support **local communities**
- Help to **reduce fuel poverty** in the region
- Collaborate with **associations and non-government organisations**, as well as directly with **individuals**

From vision to action



[Coventry SEP Strategic Business Plan 2024](#)

[Coventry SEP Annual Business Plan 2026/27](#)

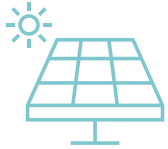
How projects are funded and governed

- **Strategic Business Plan** and **Annual Business Plan** guide SEP activities
- All projects governed through **gateway process** measured against **acceptance criteria** with decision making by **SEP Board**
- E.ON and Council nominate **sponsors** for each project
- Standard public sector **finance, procurement, and contract** processes followed
- E.ON funds **development costs**, where agreed
- Varied funding models which can include **grant, capital, revenue from SEP activities, finance**, etc.



Programmes Overview

The Coventry Energy Plan has informed eight programmes of work that contained all planned activities for FY 2026/27.



Renewable Generation



Heat Networks



SME and public sector buildings



Transportation



Residential



Hillfields



Community Benefit



Innovation and other activity

In flight projects



Lentons Lane Solar Farm



Moat House Leisure Centre and Community Centre



Sidney Stringer and Coventry College



Schools multi-solution retrofit



Kestrix trial



Battery Affordability pilot



Care Leavers pilot



Coventry Grows

Pipeline projects



Devolved retrofit



Partnerships



SME propositions



Residential propositions



Wide solar expansion



District heat networks



Smart local energy systems

Our key learnings after the first couple of years



Prioritise

- Don't say 'yes' to everything
- Give the partnership a chance to 'bed in'



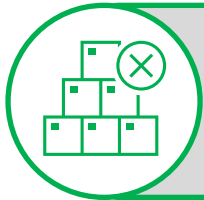
Have a plan

- Mobilisation is a critical time for the Partnership
- What does the first 100 days look like?



Culture

- Understand each others' cultures
- Spend the time to align
- Don't underestimate the differences, but this is the greatest asset



Challenge BAU

- Re-align expectations of clients
- Think about how best to deliver

We've identified lots of opportunities in Coventry through the Coventry Energy Plan which drive our future aspirations

- Creation of an estimated **2,000 full-time jobs** per year through to 2038, especially through local supply chains.
- Up to 65% **reduction in carbon emissions** from 2021 baseline and a 74% reduction against a 1990 baseline.
- Produce 17% of the city's current electricity needs which will significantly increase **energy resilience**.
- An **investment of c.£10 billion** (up to 2038) is estimated to support the development of targeted propositions and programmes to benefit the residents and businesses.

In order to deliver this, significant public and private investment will be required and the role of the Partnership is to create an enabling environment which maximises the opportunity.

Any
questions?



Coventry City Council

e.on

