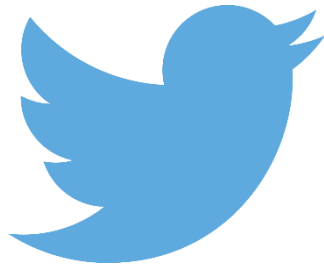


**Be part of the conversation!  
Follow APSE on Twitter and LinkedIn**



**@apseevents  
@apsenews**

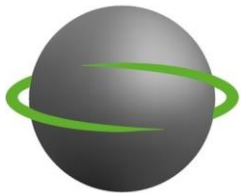


**@APSE - Association  
for Public Service  
Excellence**

# Measuring Scope 3 Emissions

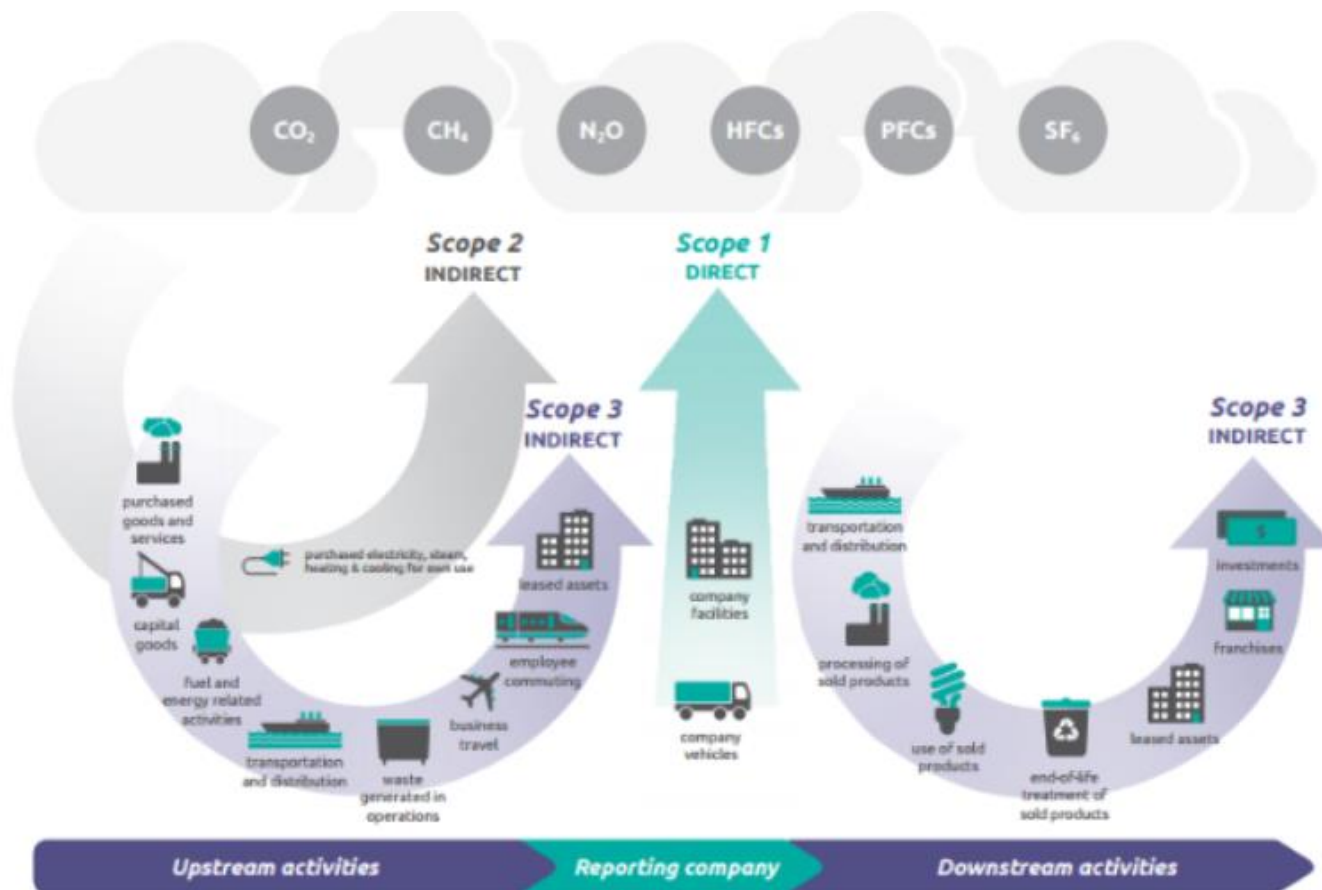
By Alan Barber

APSE Energy Associate  
& Director of Salvis



SALVIS<sup>®</sup>

[www.apse.org.uk](http://www.apse.org.uk)



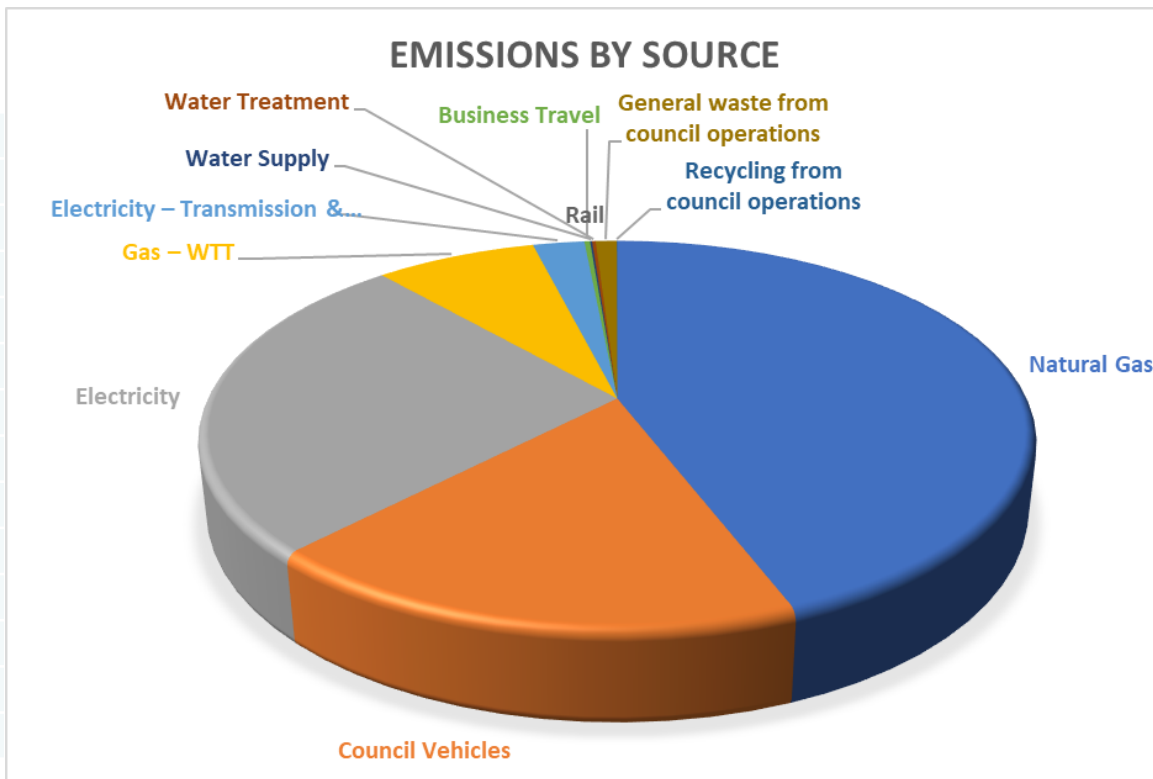
# Typical Scope 3 Sources for a Council

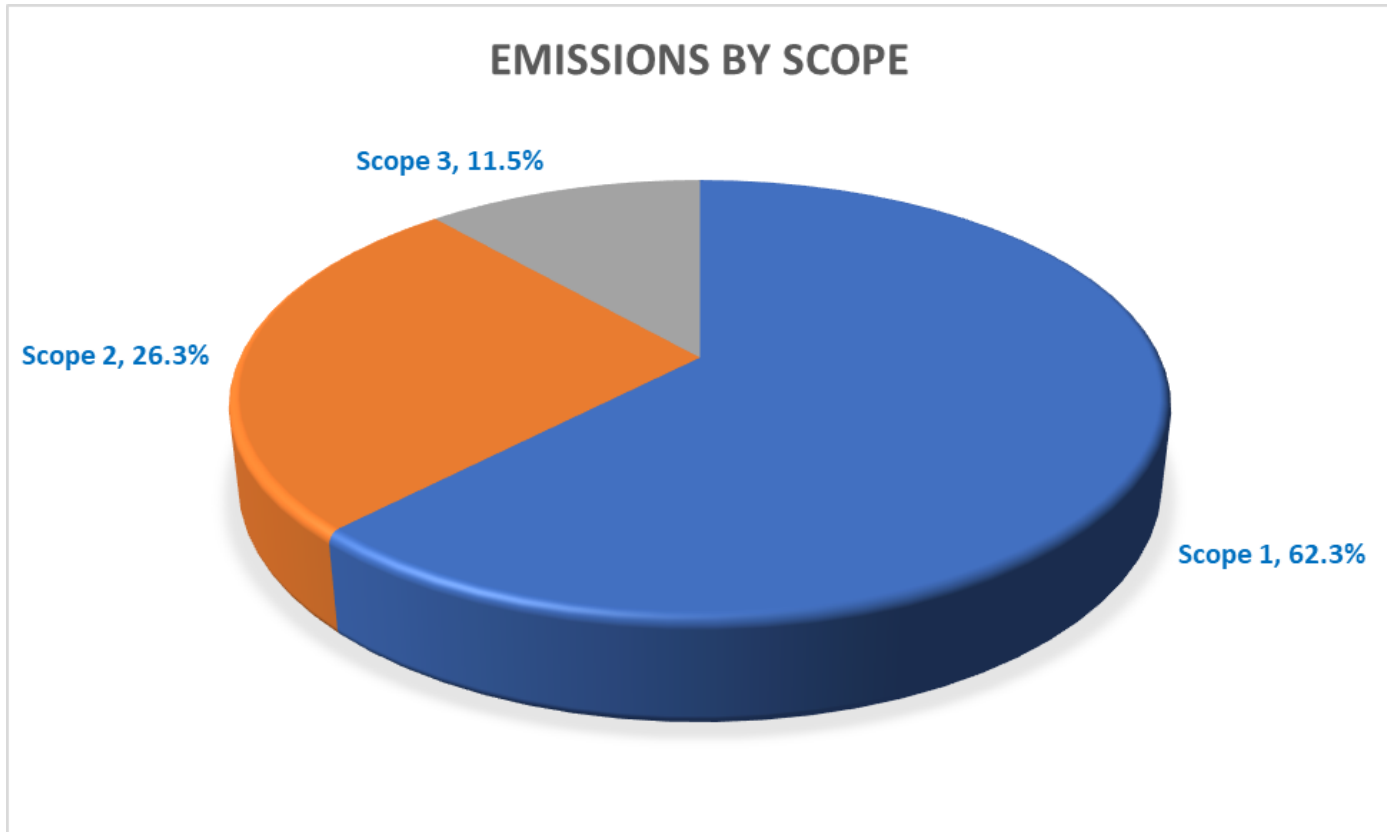
- *Purchased goods and services*
  - *Supplier specific method (Environmental Product Declarations (EPDs))*
  - *Spend based method*
- Leased assets
- Business travel – land / sea / air
- Employee commuting to work
- Public transport
- Waste disposal
- Working from home
- Water supply/treatment
- Hotel stay
- Well-to-tank and transmission and distribution

# Deciding what emission to include?

- Relevance
- Completeness
- Consistency
- Transparency
- Accuracy

2022/23			
Emissions Source	Scope	% Split	TonnesCO2e
Natural Gas	1	44%	3,298
Council Vehicles	1	18%	1,354
Electricity	2	26%	1,964
Gas – WTT	3	7.5%	562
Electricity – Transmission & Distribution	3	2.4%	180
Business Travel	3	0.3%	20
Water Supply	3	0.1%	7
Water Treatment	3	0.2%	12
Rail	3	0.001%	0.10
General waste from council operations	3	1.0%	74
Recycling from council operations	3	0.02%	1.4
<b>Total</b>	-	<b>100%</b>	<b>7,472</b>





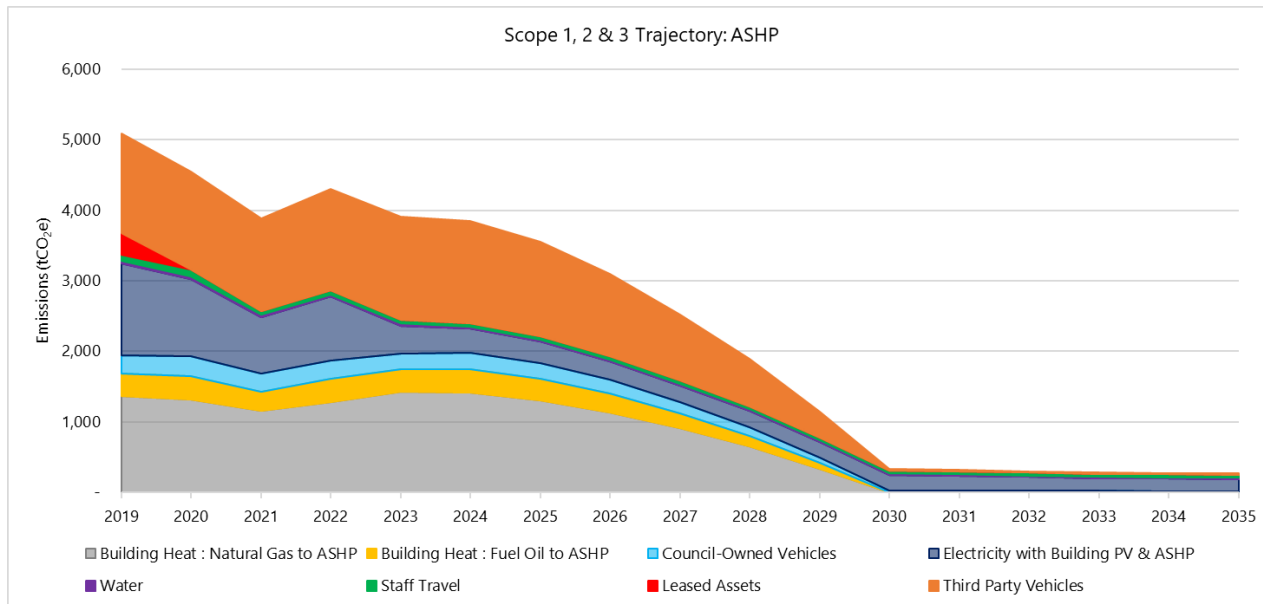
# How to gather the data

- Ask nicely for it
- Change policies and make it a contractual requirement to provide data

# Net Zero Strategy

- Calculate Scope 1 & 2 emissions
- Calculate Scope 1, 2 & 3 emissions
- Develop strategy on how to reduce emissions
- Carry out feasibility studies
- Detailed design
- **Deliver**
- Continuously monitor emissions and performance

# Net Zero Trajectory (a live document)



# Contact details

**Alan Barber**

**APSE Energy Associates**

**Email: [alan.barber@salvisgroup.co.uk](mailto:alan.barber@salvisgroup.co.uk)**

**Association for Public Service Excellence**

3rd floor, Trafford House, Chester Road,  
Old Trafford, Manchester M32 0RS.

**telephone: 0161 772 1810**

**web: [www.apse.org.uk](http://www.apse.org.uk)**



**GB 11409**



**GB 11132**



**GB 14074**