



Cleaning in Fife

**We carry out daily cleans in approximately
750 different locations**

High Schools	Primary Schools	Nursery Schools,	Nuture Centres
Care homes	Childrens Homes	Libraries	Offices
Theatres	Public conveniences	Stairwells	Bus stations and shelters

We also carry out Industrial and specialist cleans:

External Building cleans

Power washing

Graffiti removal

Void cleaning

Duct cleaning

Staffing structure:

1 Service Manager

3 Team Managers

12 Area Coordinators

2 Support Team supervisors

6 Mobile Area Cleaning Supervisors

101 Cleaning Supervisors

890 Cleaners

Challenges

- Wide geographical area
- Lots of remote and small units
- Big spans of control
- Aging workforce
- Recruitment difficulties
- Difficulties in reaching front line staff for training and support
- Staff not digitally aware or competent
- Increasing demands for cleaning not supported by budget
- Increasing absence rates

Solutions:

- Mobile cleaning teams, in locations with small units and recruitment challenges, for example East Neuk of Fife.
- MACS, introduction of Mobile Area Cleaning Supervisors.
- Where possible we take training to the employees rather than have them come to a central location.

MACS – Mobile Area Cleaning Supervisors

- Funded by recycling budget
- Reduce spans of control for Area Coordinators, more site visits.
- Auditing standards.
- Supporting with well being and training.
- Costing new work.
- Low level staffing issues.

Training

- Redesigned COPC book
- Separate modules for Care homes
- Increased number of Assessors
- Handbook on equipment and problem solving

Facilities Management
Cleaning Operative
Proficiency Certificate
Work Book



Please retain this booklet for your information.

Name:

Establishment:

Payroll Number:

Facilities Management Service
Cleaning Operative Proficiency Certificate



has successfully completed
the required training and
formal assessment.

Signature of Service Manager

Date

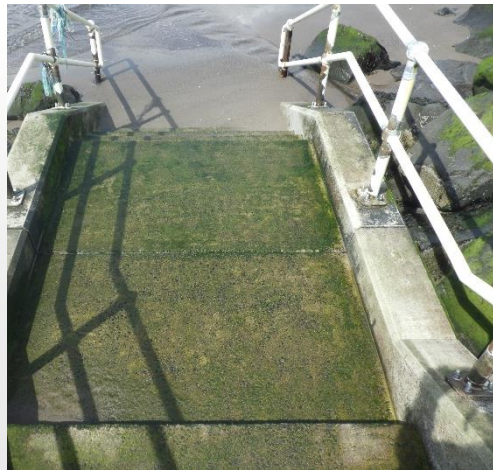
Industrial and Specialist Cleaning

Our Industrial cleaning team covers all of Fife and provides direct support to other council services including, Housing, Roads and Transportation, Flooding & Shoreline, NHS, and Facilities Management.

We also provide an emergency response service for police and fire, following floods, fires and traffic accidents.

The team consists of 11 staff and a fleet of 6 vehicles made up of 2 Luton vans, 1 Flatbed and 3 Wash vans.

POWER WASHING



- Slipways
- Buildings
- Bus Stations
- Bus shelters
- Playgrounds
- Spillages

JOB SPECIFIC TRAINING INCLUDES

- CPC driver qualification, to allow employees to drive vehicles over 3.5 tonnes
- IPAF IB, 3A & 3B for working at heights
- Fall Prevention – Use of Safety Harness

BOOMS 3B

IC BOOMS

VERTICALS

Harness Training Courses
Company Harness Inspectors - HA + HU + HI

MEWP Operators - HA + HU

Managers, Safety Professionals and Supervisors - HA

HA
Harness Awareness

HU
Harness User

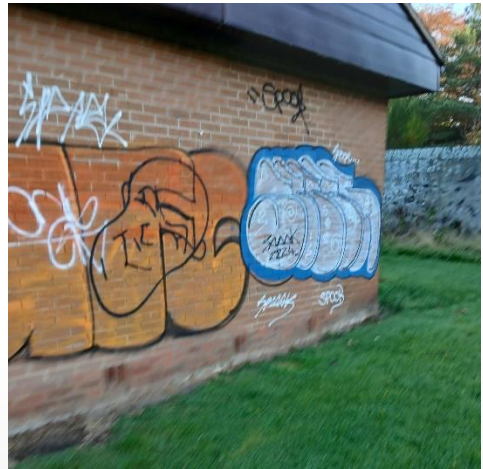
HI
Harness Inspector

Theory Section of a Harness Course
Essential for anyone undertaking any level of training.
Essential for people who will not personally use a harness but will plan, manage or supervise the use of harness in a MEWP.

The Practical Assessment Section of a Harness Course
Essential for anyone who will personally use a harness in a MEWP.
Sufficient for people who will use a Harness but will not conduct statutory inspections on behalf of an organisation.

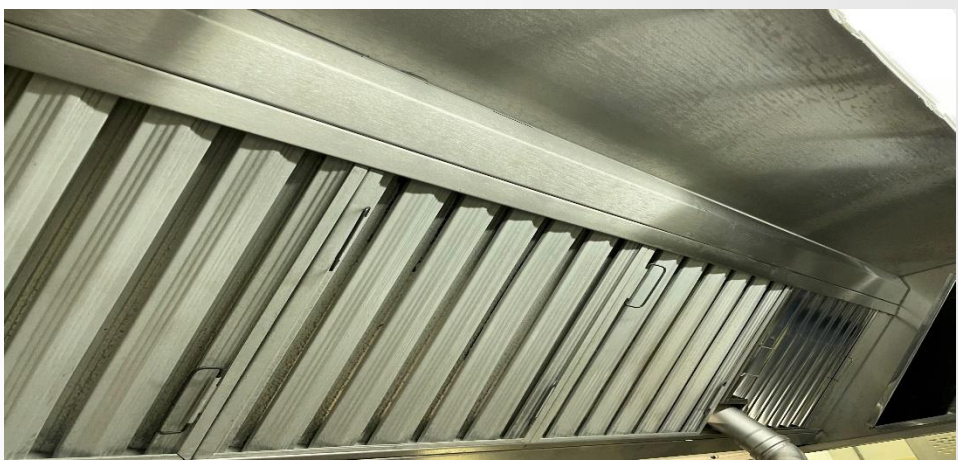
Additional Theory and Practical Assessment to Inspector Level
Essential for anyone who will personally conduct statutory inspections on behalf of an organisation.

GRAFFITI REMOVAL





Duct Cleaning



Looking ahead!

The last couple of years the focus has been on creating a good foundation and structure to allow for growth and efficiency.

Next priorities: increasing productivity through better use of cleaning equipment and innovation, income generation through activity of our Industrial team

Contributing to Fife Place agenda and making Fife a great place to live and visit

Questions and Answers



CONTACT FOR FURTHER
INFORMATION:



MELANIE.ARTHUR@FIFE.GOV.
UK