

# 1 Million Trees for Norfolk and Roadside Tree Diseases

Charlotte Watts

Lead Project Manager – Green Spaces

Tom Russell Grant

Lead Tree and Woodland Officer

APSE

26<sup>th</sup> November 2025



# 1 Million Trees for Norfolk



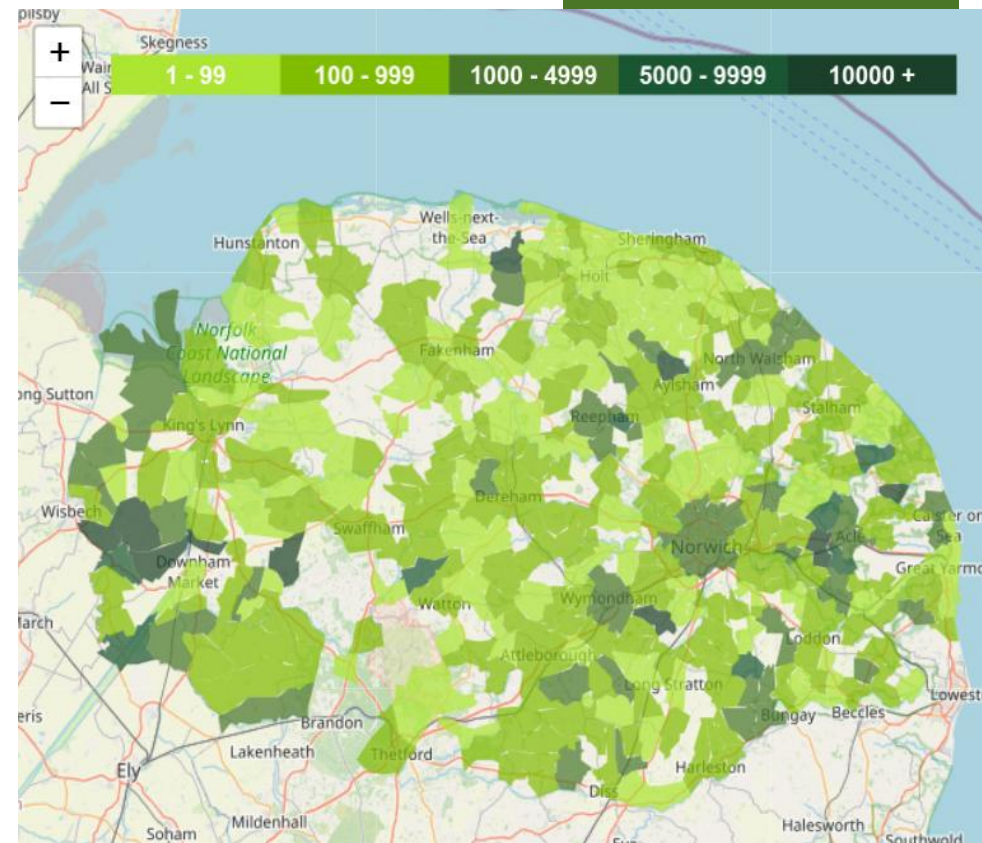
- Adopted in November 2019
- Commitment to planting an average of 150,000 trees per year
- On our way to reach 770,000 trees planted by March 2026
- Working in partnership with communities, landowners, other agencies, businesses and individuals across the county



# Planting Progress



Planting Season	Tree Planting Totals
2020 / 2021	24,884
2021 / 2022	39,356
2022 / 2023	212,053
2023 / 2024	210,532
2024 / 2025	147,418
<b>Total Planted</b>	<b>634,234</b>
<i>Estimated Planting 25/26</i>	<i>137,500</i>



Trees planted interactive map

# 1 Million Tree initiatives

## County Farms

Working with NCC tenant farmers to plant trees and hedgerows across our holdings. Increasing hedgerow connectivity and biodiversity on farmland.



er  
ron  
eir  
und

Matrix funded in the past 4 years - 204,914 whips planted so far

Looking at new ways to finance this year and in the future

NCC is working with a land agent to apply for Countryside Stewardship Capital Grants (CSCG)

Land agent during their sites visits also took notes on other tree planting potential and nature recovery activities

ect  
Tree  
ds

# Options for 2025 / 26 planting season

## Gressenhall Community Tree Nursery

- Established in 2021
- We grow trees from seed collected in Norfolk to retain local provenance
- Dedicated team of local volunteers
- A hub for learning about trees – based at Gressenhall museum
  - activities with school groups
  - public events
  - support for other community groups growing trees

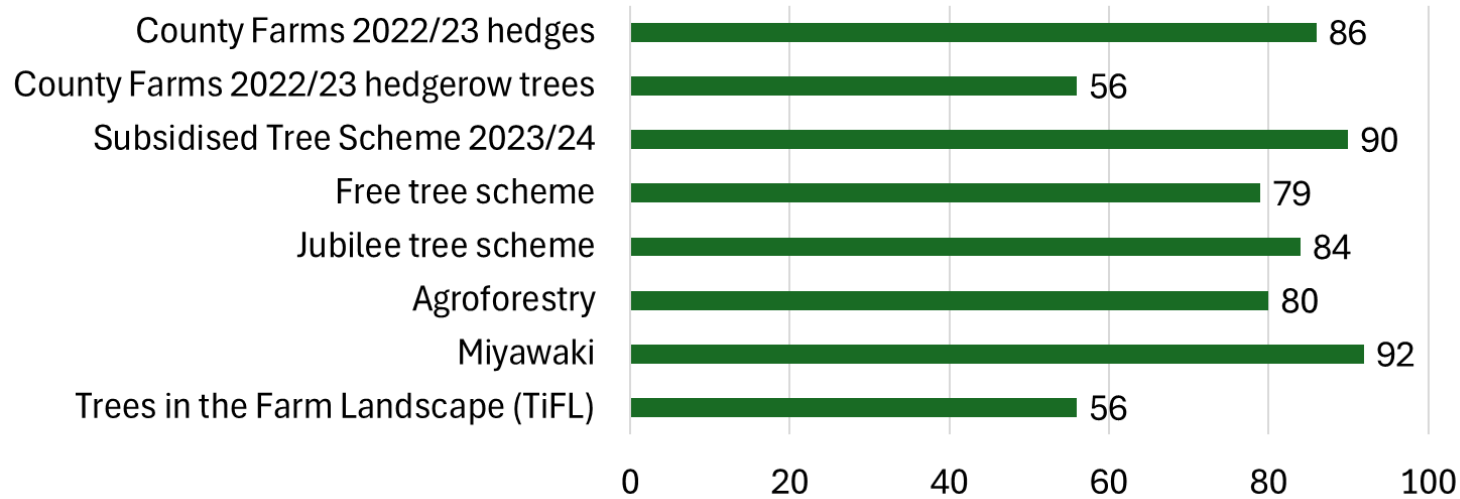


# Monitoring



- Through online questionnaires & on-site visits
- Sampling approach

Most recent survival estimates (%)



# Future Delivery



## 1) Continue and increase delivery through partnerships

- Woodland Trust / The Tree Council / Commercial Partners

## 2) Continue planting on County Farms

- Wiggenhall Woodland Creation
- Continuation of Hedge Restoration

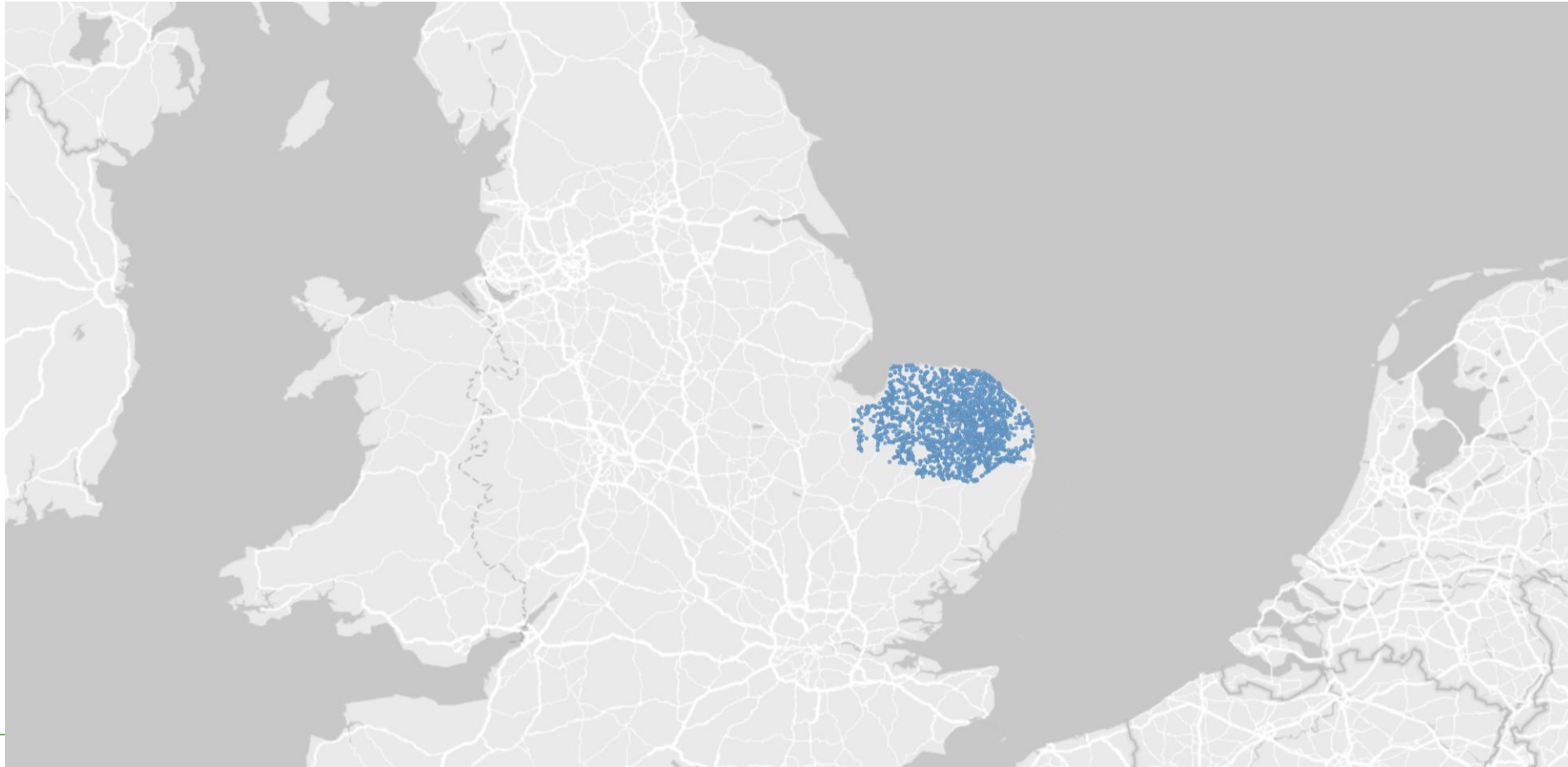
## 3) Strategic Woodland Delivery

- Heart of the East Forest
- Looking beyond 1 million trees, LNRS delivery

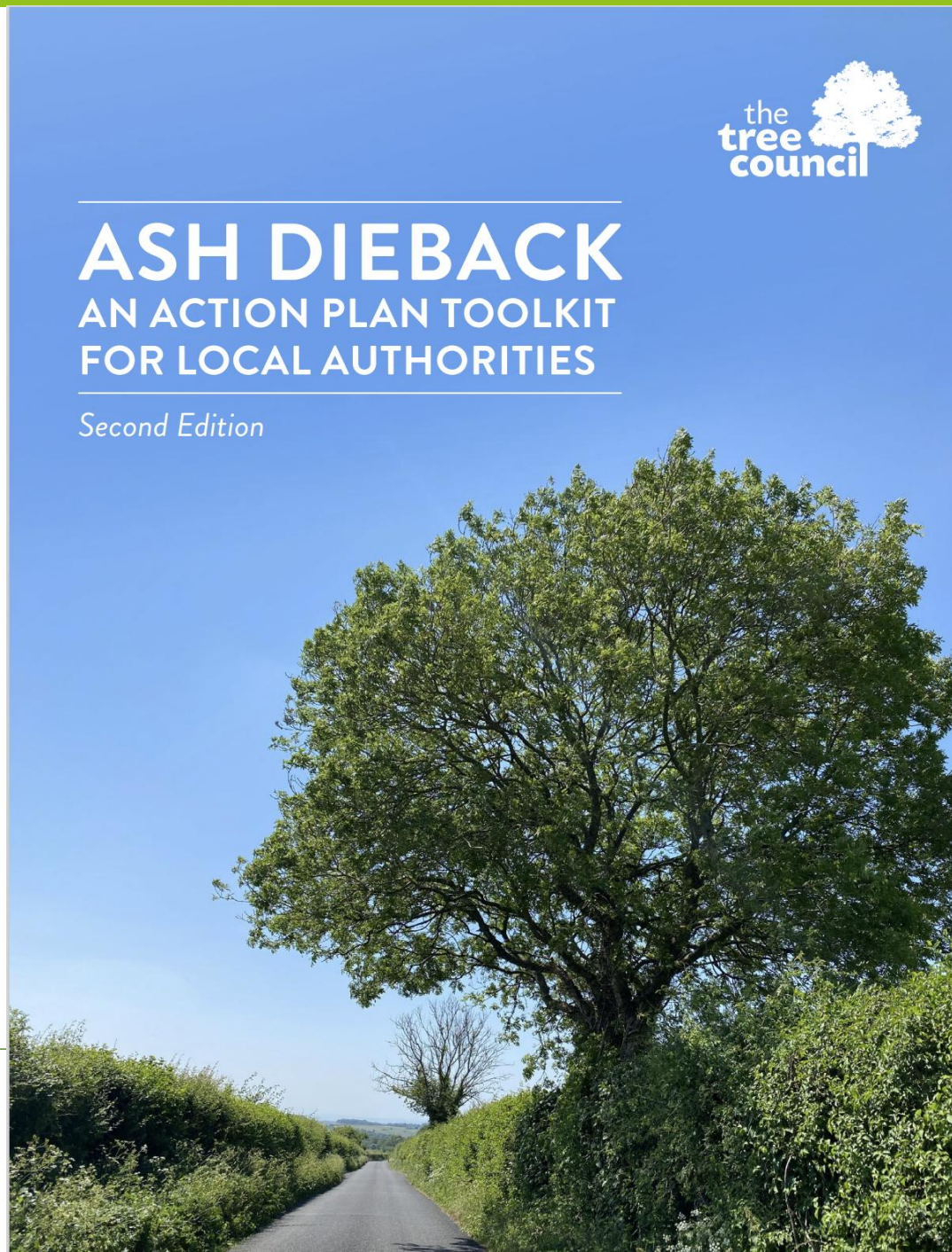




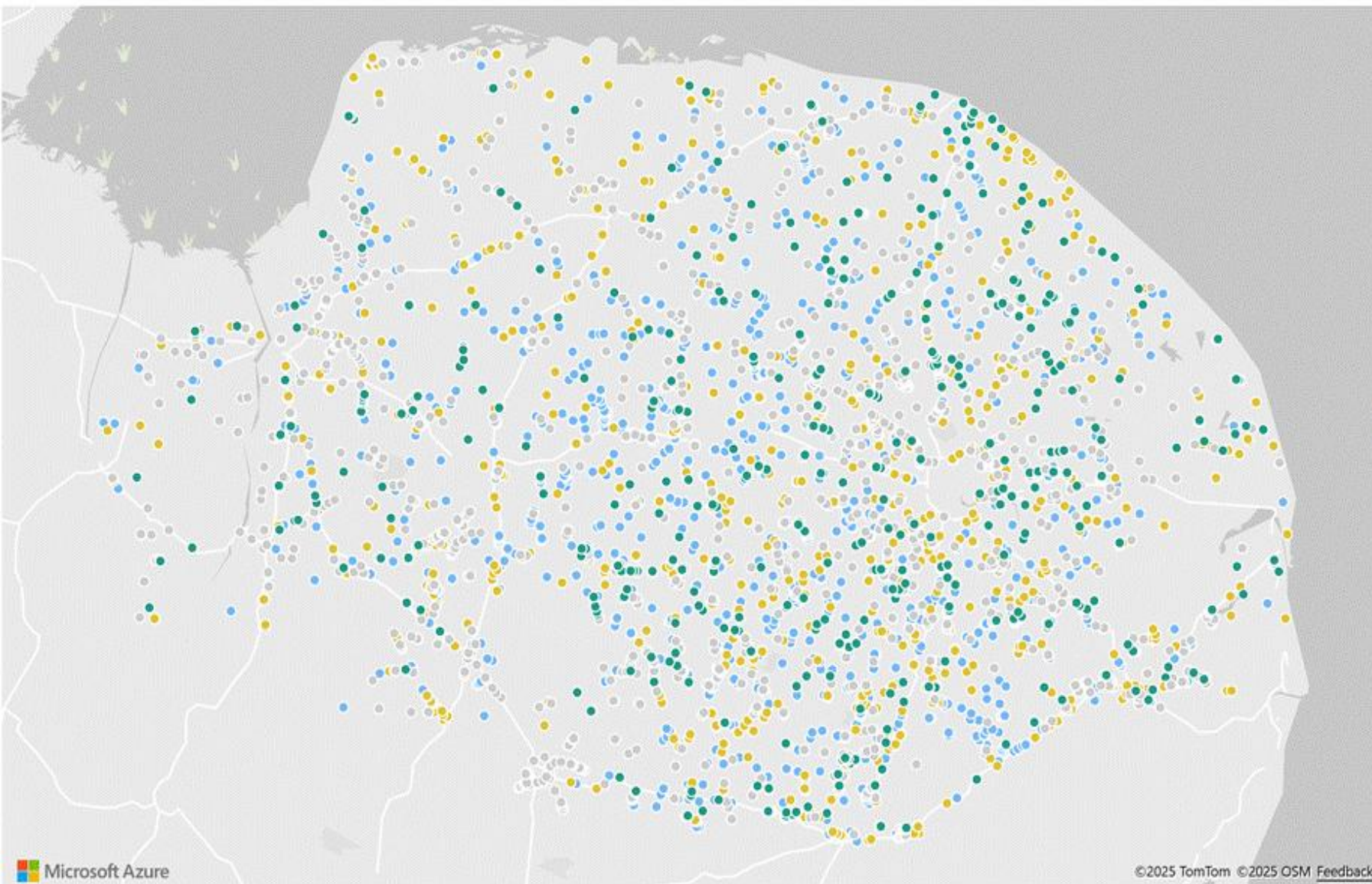
# Norfolk is a large County situated in a drought prone part of the UK:



- **Ash dieback**
- **Managing**
- **Monitoring**



# 2021 – 2025: locations of over 12,000 Roadside trees requiring felling



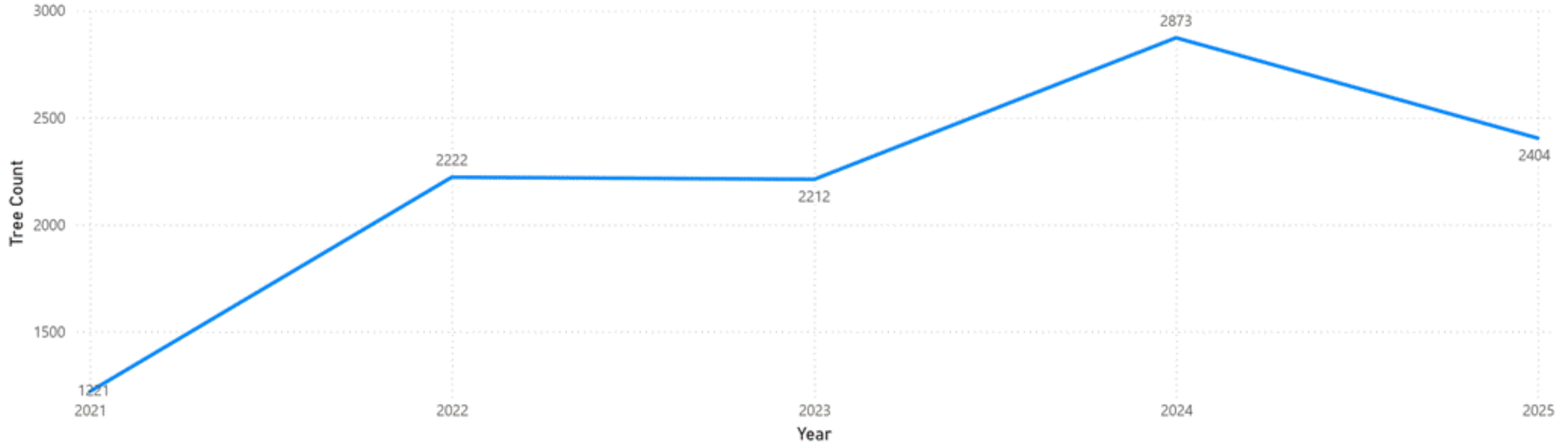
## Common Name

- Ash
- Elm
- Other
- Sycamore

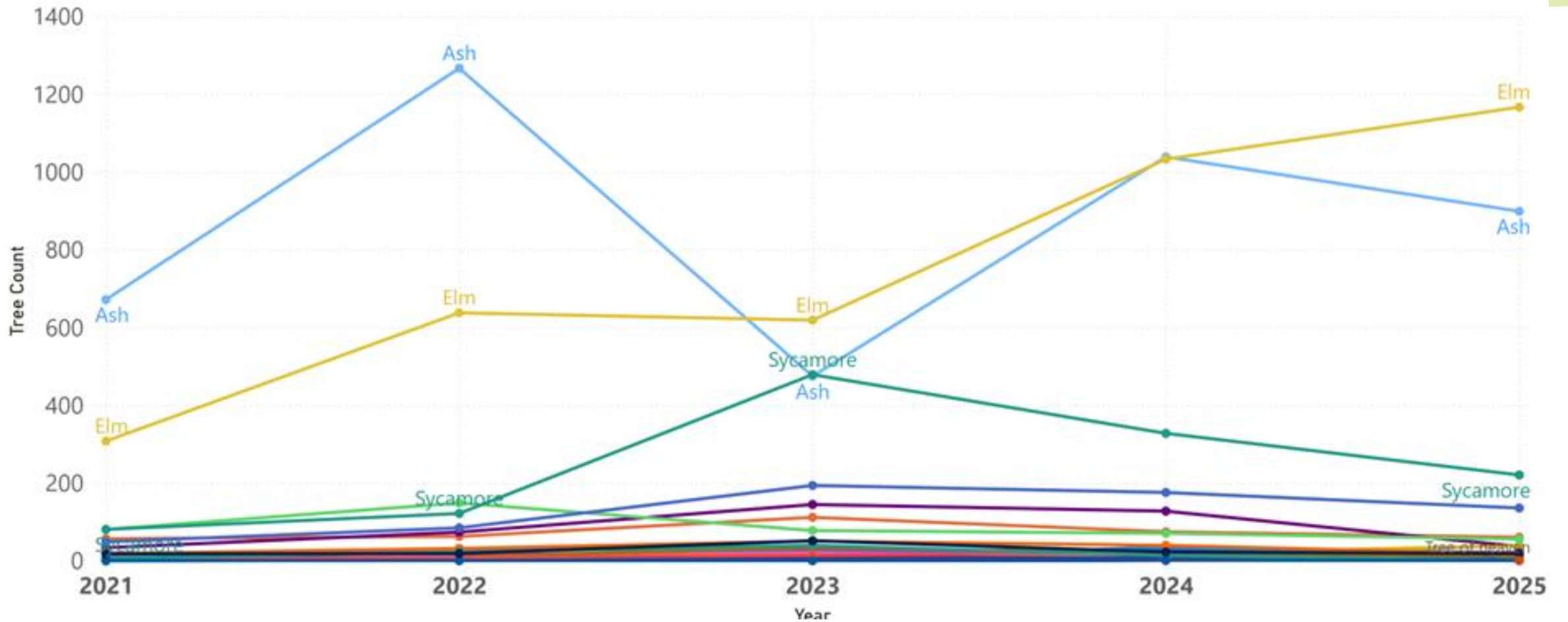


**Norfolk**  
County Council

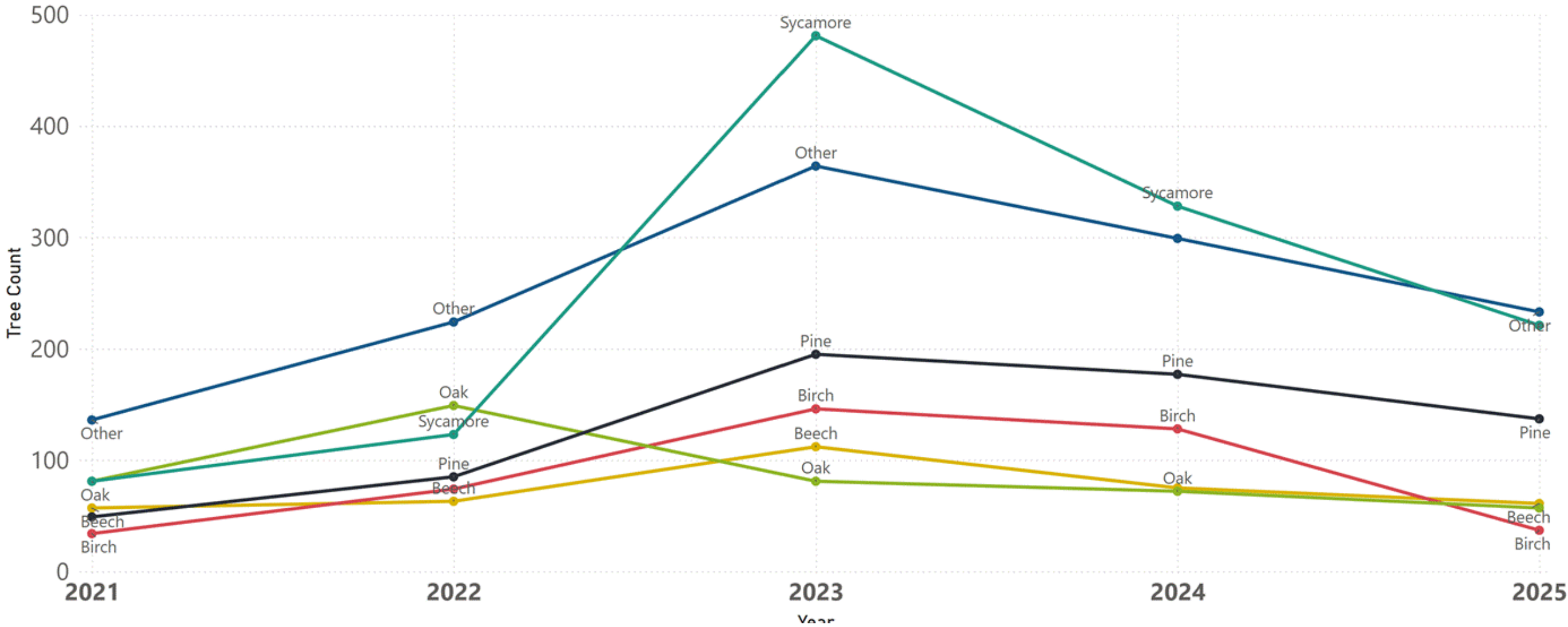
# Trend in roadside trees requiring felling 2021-2025



# Trend in roadside trees requiring felling 2021-2025 by species



# Non Ash and Elm:



# August 2021

## Healthy looking trees

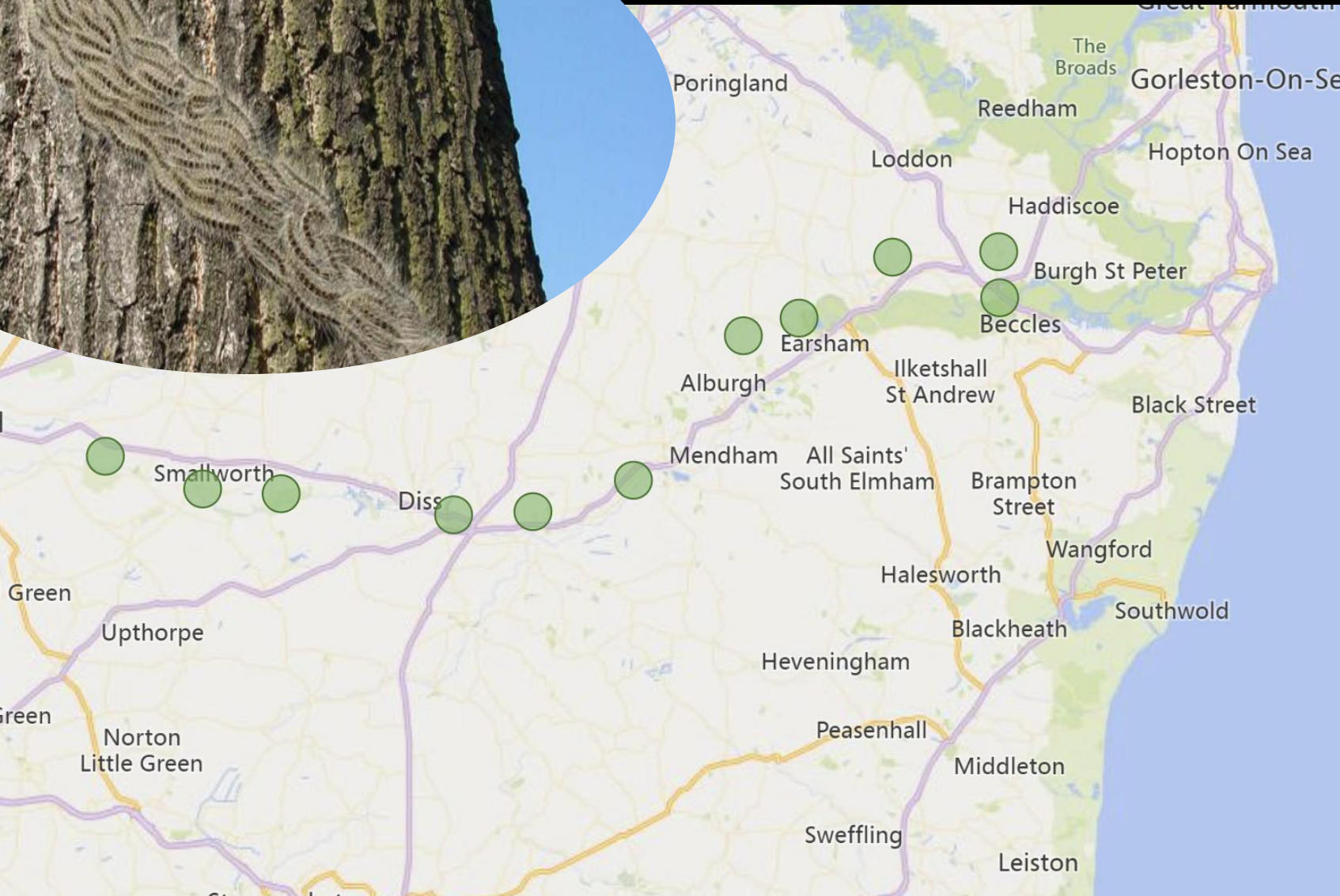


# September 2023

## A very dead sycamore



# • Oak Processionary Moth Surveys



- **No breeding populations of OPM found!**

## • **Visual Surveys:**

- **Surveyed Oak on Suffolk border on vulnerable trees with good all-round access for visual check**
- **Essential for tree inspectors to gain experience assessing for OPM Norfolk are impacted**
- **Surveyed with tree surgeon who has worked on OPM in London**

## • **Pheromone Traps**

- **9 traps installed and checked – organised by Forestry Research.**
- **2 OPM trapped – not a breeding population**
- **Will continue trapping next year**

t the OPM





**What's caught in  
the traps?  
Mainly Wasps!  
(And a couple of OPM)**



- **Oak Processionary Moth**
- **Managing**
- **Monitoring**



# OAK PROCESSIONARY MOTH IN ENGLAND:

*A Toolkit for Local Authorities*



# Tree Alert

Tree Pest & Disease sighting reporter



## Tree Alert

Britain's trees are under unprecedented threat from new pests and diseases. We are particularly interested in identifying problems with ash, oak, horse chestnut, pine and sitka spruce trees. You can help by being aware of the symptoms of serious threats and reporting them for further investigation.

Typical symptoms

Report a Sighting

More info (website)

<http://treealert.forestresearch.gov.uk>

Info required:

- **About you**
- **About your observation** (incl. grid reference and at least 3 good quality photos)



For more information  
and discussion contact  
[treesafety@norfolk.gov.uk](mailto:treesafety@norfolk.gov.uk)

