

VoGC Tree Strategy Update



The Tree Strategy provides a unified direction for all Council departments in respect of tree management and provides a framework to consider the organisational and resource requirements, needed to address the current challenges and the opportunities highlighted by the broader scope of the climate change and biodiversity emergencies.

Progress so far.....

21 Action Points – all either completed or on-target

Progress to date on key actions.....

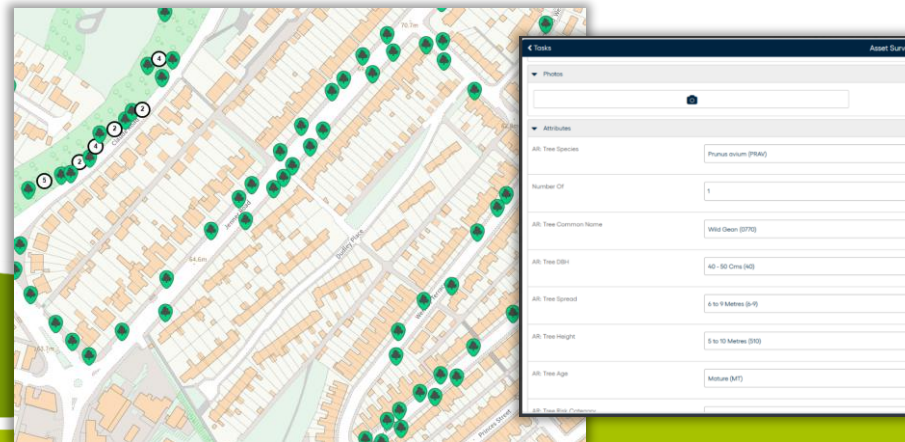
Internal communication on tree issues / inspections / compliance

Dedicated electronic system set up....

Plotting & Cyclical inspections progressing well



Confirm[®]



*95% Street Trees plotted
Proactive Inspections.....*



Progress to date on key actions continued.....

Plant a minimum of 1500 trees across the Council estate, annually

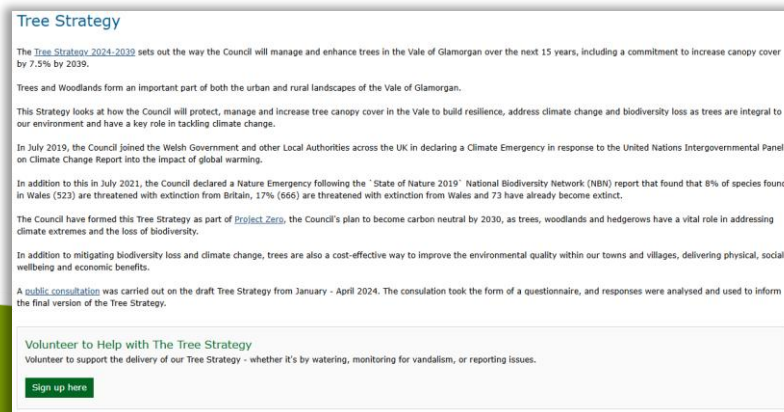
Tree Strategy Webpage Launched

Actively seek funding streams

Continually looking to identify areas for tree planting and natural regeneration

24/24: 13,454 trees

25/26: 12,433 trees (projected)



The screenshot shows the 'Tree Strategy' webpage. It includes the title 'Tree Strategy', a brief overview of the strategy's goals (increasing canopy cover by 7.5% by 2039), and information about the council's commitment to tree planting. It also mentions a public consultation period from January to April 2024. At the bottom, there is a section titled 'Volunteer to Help with The Tree Strategy' with a 'Sign up here' button.

Local Nature Partnership

Pride in Place funding

Section 106 funding

5 Year Capital funding

“Friends of” & User Groups



Progress relating to the Guiding Principles & Objectives.....

Increase urban street canopy cover within the built adopted Highway year on year

Trunk Diameter of existing tree (cm)	Number of replacement trees
Up to 39.9	2
40 to 49.9	3
50 to 59.9	4
60 to 69.9	5
70 to 79.9	6
80 plus	7

We will aim to replant highway street trees at locations that trees are removed (caveats: services / is the location right?)

Based on the replacement protocol look to introduce additional trees back into the individual street.

Working closely with Highways to ensure each individual pit is reinstated to an appropriate standard / specification.

Each tree pit will contain root barriers / growing medium as appropriate to each individual pit (to a set minimum spec – note – either existing root runs or root cells)



Progress relating to the Guiding Principles & Objectives.....

Commit to ensure that the right tree is planted in the right place.

Take into account the current and future changes in climate and manage the tree stock accordingly.

Acer platanoides 'Crimson Sentry'

Compact, upright form

High urban resilience

Low maintenance

Street scene value

Betula 'Edinburgh'

Light canopy and manageable size

Adaptable to urban conditions

Lower infrastructure impact

Visual and environmental benefits

Tilia cordata 'Winter Orange'

Controlled growth habit

Excellent urban tolerance

Year-round interest

Ecological value

I don't want a brown tree?



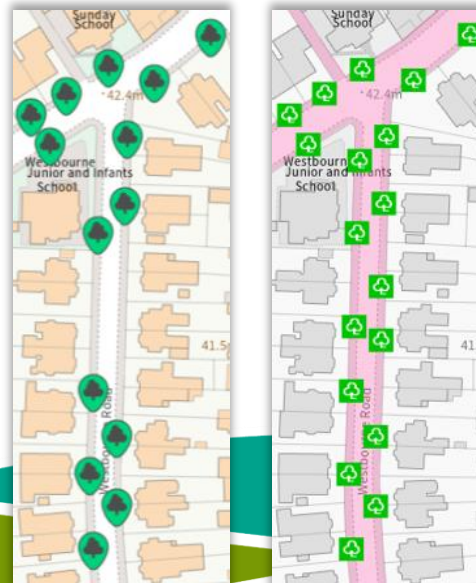
Progress relating to the Guiding Principles & Objectives may be affected by the following considerations:



Resources (financial & physical)

Available space to plant

Tree Pests & Diseases



Ash Dieback – a major ongoing problem

Larch and Oak Diseases – spreading in wet areas

Oak Decline – affecting our native oak trees

Diseases of Conifers



Finally - Progress relating to the Guiding Principles & Objectives of the Tree Strategy is only possible due to the continued efforts and involvement of our wonderful volunteer groups:



Friends of The
Kymyn

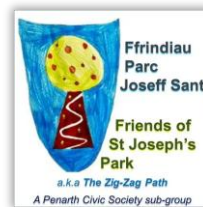


Replant Rhoose

Trees And Flowers
For Southerdown



Wenvoe Wildlife
Group



...and many, many more individuals

