

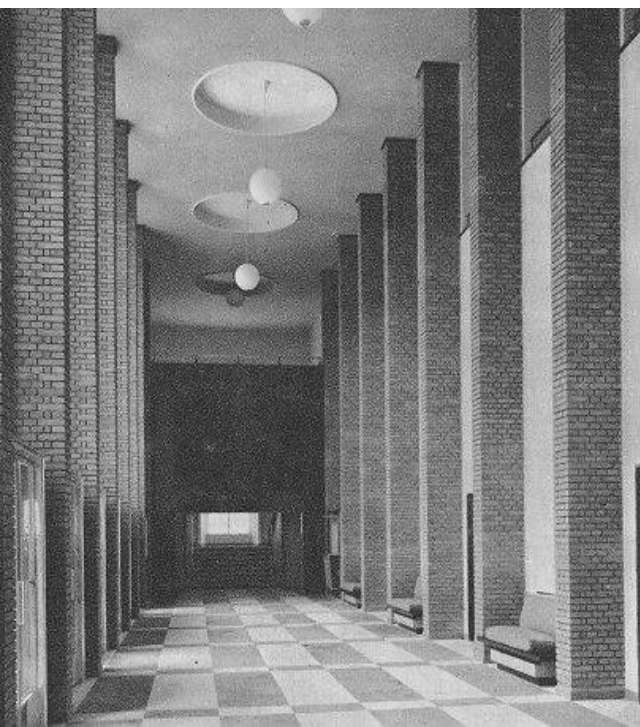


# SPACE & PLACE

RETROFIT | WOLVERHAMPTON CIVIC HALLS | CONSERVATION & HISTORIC



1930S PHOTO ON COMPLETION (FROM ARCHITECTS JOURNAL)



## THE HALLS | HISTORY

### DETAILS

Client: The City of Wolverhampton Council

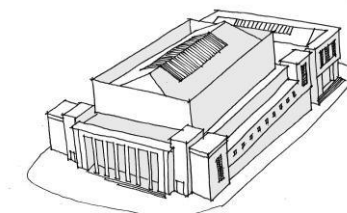
Project Value: £38M

Completed: March 2023

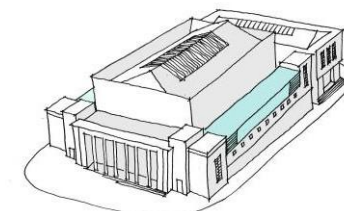
Opened in 1938, Wolverhampton Civic Halls, designed by Lyons and Israel in the Classical style, is an **iconic music venue** and holds Grade II listed status.

### VISION

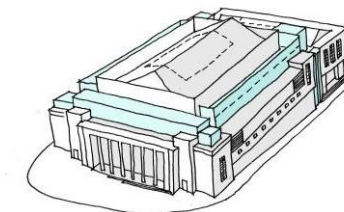
The City of Wolverhampton Council is dedicated to preserving the building, **celebrating its heritage**, and expanding its appeal and capacity to **secure a bright future**.



1930s



1990s/2000



2019+



## THE HALLS | HISTORY

In 2019, SPACE&PLACE, Atkins Réalis and Willmott Dixon stepped in to **revitalise the project**, tackling challenges like roof leaks, asbestos, and significant structural and M&E issues, **turning the building's future around**.

## HERITAGE

"The Halls" hold a special place in the hearts of both bands and fans alike. They have hosted legends like Blondie, Elton John, Queen, Elvis Costello, Nirvana, Blur, and Oasis, creating **unforgettable moments** in music history. Today, "The Halls" also embrace an exciting range of entertainment, from comedy to dance. They remain a **cultural treasure**, continuing to inspire and captivate audiences across generations.

# THE HALLS | LOWER GROUND FLOOR

Capacity

Facility



## FACILITIES

- 2 Auditoriums
- Civic Hall
- 9 Bars
- Green room
- VIP dressing room
- Booking Office
- Offices
- Kitchens
- Extensive backstage storage
- WC

- Auditoria
- Bars
- Bathrooms
- Catering
- Circulation - Back of House
- Circulation - Fire
- Circulation - Performer
- Circulation - Public
- Circulation - Stairs
- Offices
- Plant
- Stores

## CAPACITY

- Civic Hall**  
Standing: 3408  
(2300 Stalls / 560 Circle / 190 Circle Side Standing / 358 Balcony)
- Seated: 2346 (1208 Stalls / 30 Stalls Rear Standing / 560 Circle / 100 Circle Side Standing / 358 Balcony)
- Wulfrun Hall**  
Standing: 1316 (1200 Stalls / 116 Balcony)
- Seated: 814 (698 Stalls / 116 Balcony)



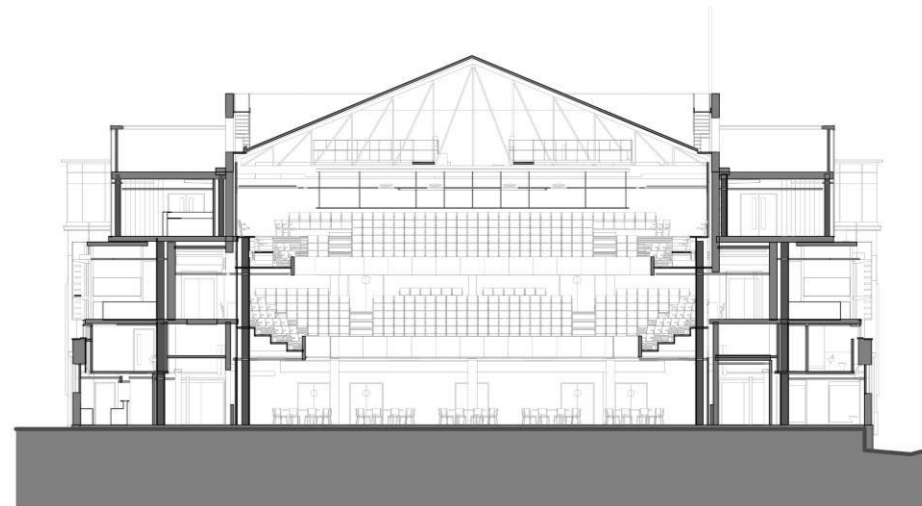
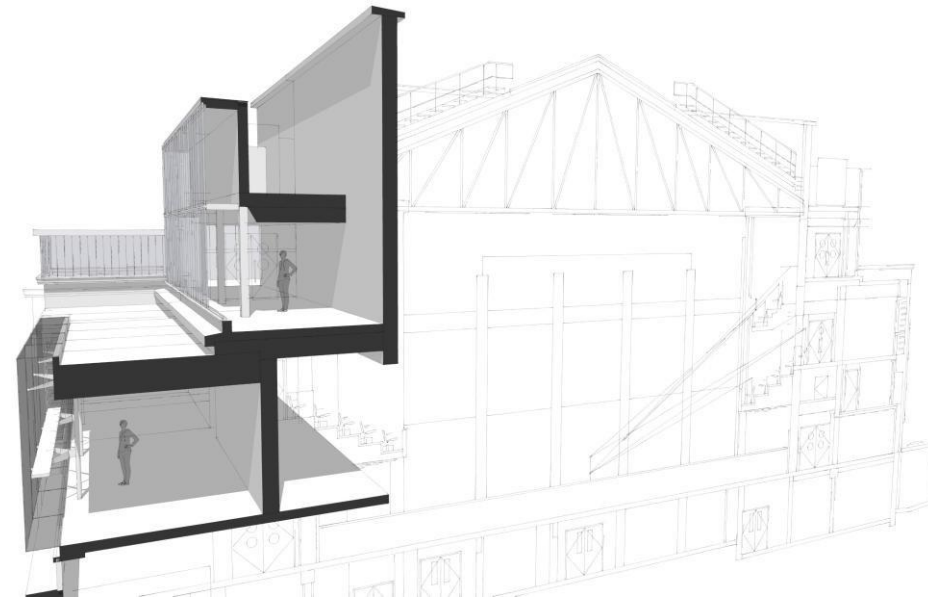
## THE HALLS | STRUCTURE

The cantilevered second-floor bar area above the Penoyre & Prasad extension **directs loads** through a combination of new columns and existing structures.

### TECHNICAL INNOVATION

The challenge for Furness Partnership was to introduce **two-storey steel columns** through the existing building and install 1.5m-deep beams without damaging the existing structure, to provide additional balcony seating.

**Complex pile foundations** needed to be slotted in between the existing footings and drainage.





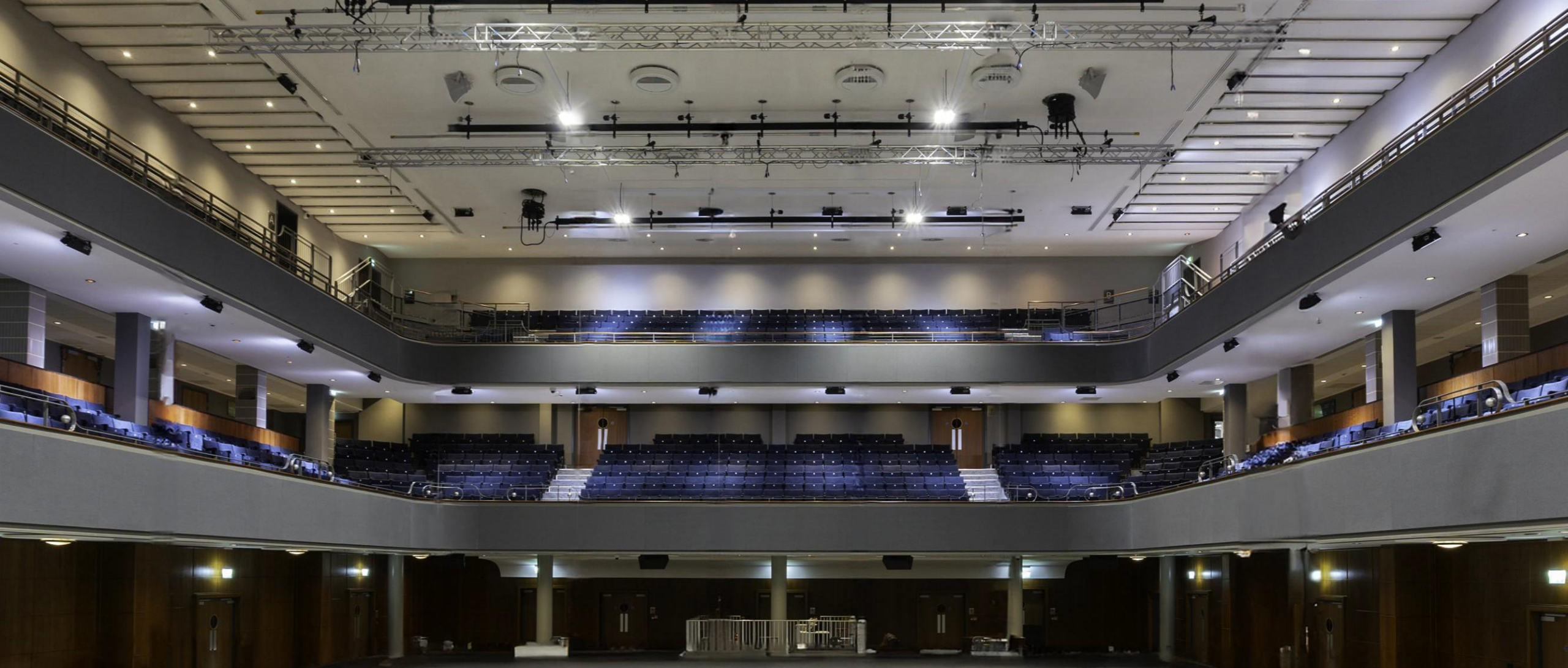
## THE HALLS | REUSE

- › Handrails
- › Lighting fittings
- › Doors
- › Refurbished terrazzo flooring
- › Timber main stage reused
- › Radiator covers
- › Door surrounds
- › External repairs to the faïence
- › Masonry lintels
- › Timber wall panel decorated with murals showing scenes from local cultural and social life. Designed by **artist Muriel Gilbert** were cleaned and reinstated.



**How is energy supplied to the project and what efforts have been made to reduce or end reliance on fossil fuels?**

- The main halls are heated using **heat pumps**.
- **Less than 5%** of the building uses gas, where fabric improvements were difficult, and old cast iron listed radiators were retained.
- A sophisticated **BMS** is in place to control **heating and lighting** usage throughout the day.



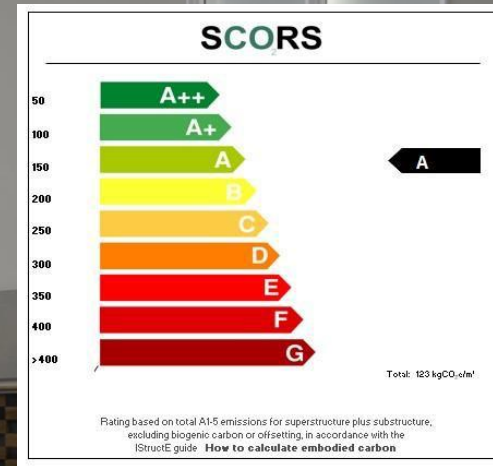
What are the predicted/actual annual CO<sub>2</sub> emissions per m<sup>2</sup> per year for the project (post-retrofit)?

- The **predicted** annual CO<sub>2</sub> emissions per m<sup>2</sup> per year for the project is **43.08 kg/CO<sub>2</sub> / m<sup>2</sup> /annum**
- A modern new build office usually has a carbon footprint of about 30.00 kg CO<sub>2</sub>/m<sup>2</sup>. Given that this building efficiently supports over **5,000 “very active”** occupants during peak times, this figure reflects a commendable achievement



What is the predicted percentage improvement in annual CO<sub>2</sub> emissions per m<sup>2</sup> per year

- Annual CO<sub>2</sub> emissions per m<sup>2</sup> are **predicted to improve by 39%** compared to the original building, despite a significant increase in occupancy and use.
- Improvements stem from better controls, removal of **glazed roof lights, triple glazing, enhanced insulation, new roof, plus heat recovery** and CO<sub>2</sub> control in HVAC systems during peak periods.
- The building is now primarily heated by **modern, efficient heat pumps** instead of gas boilers.



**What is the embodied carbon per m<sup>2</sup> for the project (post-retrofit)?**

- The embodied carbon figure for the steelwork/structure on this project is **123 kg CO<sub>2</sub>e/m<sup>2</sup>**, which is **rated A**.
- The architectural elements have a figure of only **23 kg CO<sub>2</sub>e/m<sup>2</sup>**, as most of the fabric and materials were reused where possible.
- The total embodied carbon for the entire project is **146 kg CO<sub>2</sub>e/m<sup>2</sup>**.



**What is the predicted/actual operational energy per m<sup>2</sup> per year for the project (post-retrofit)?**

- While obtaining the current utility bill figures from the operator was challenging, Desco Consulting has provided a reliable estimate based on their **Apache software calculations**, showing a predicted figure of **334.2 kW/m<sup>2</sup>/yr.**



**Has your project received any sustainability certifications?**

- Due to budget and time constraints, City of Wolverhampton Council initially did not pursue this avenue. However, certification may be obtained soon as part of a city-wide review of key assets.



0800 909 8008

50 STUDIOS 10 EUROPEAN REGIONS ONE TEAM

# SPACE & PLACE

SPACE-PLACE.COM