

Lisburn Castlereagh City Council – Climate Action Plan

APSE – Cleaner Councils / Greener Future – Wednesday 27th May 2026

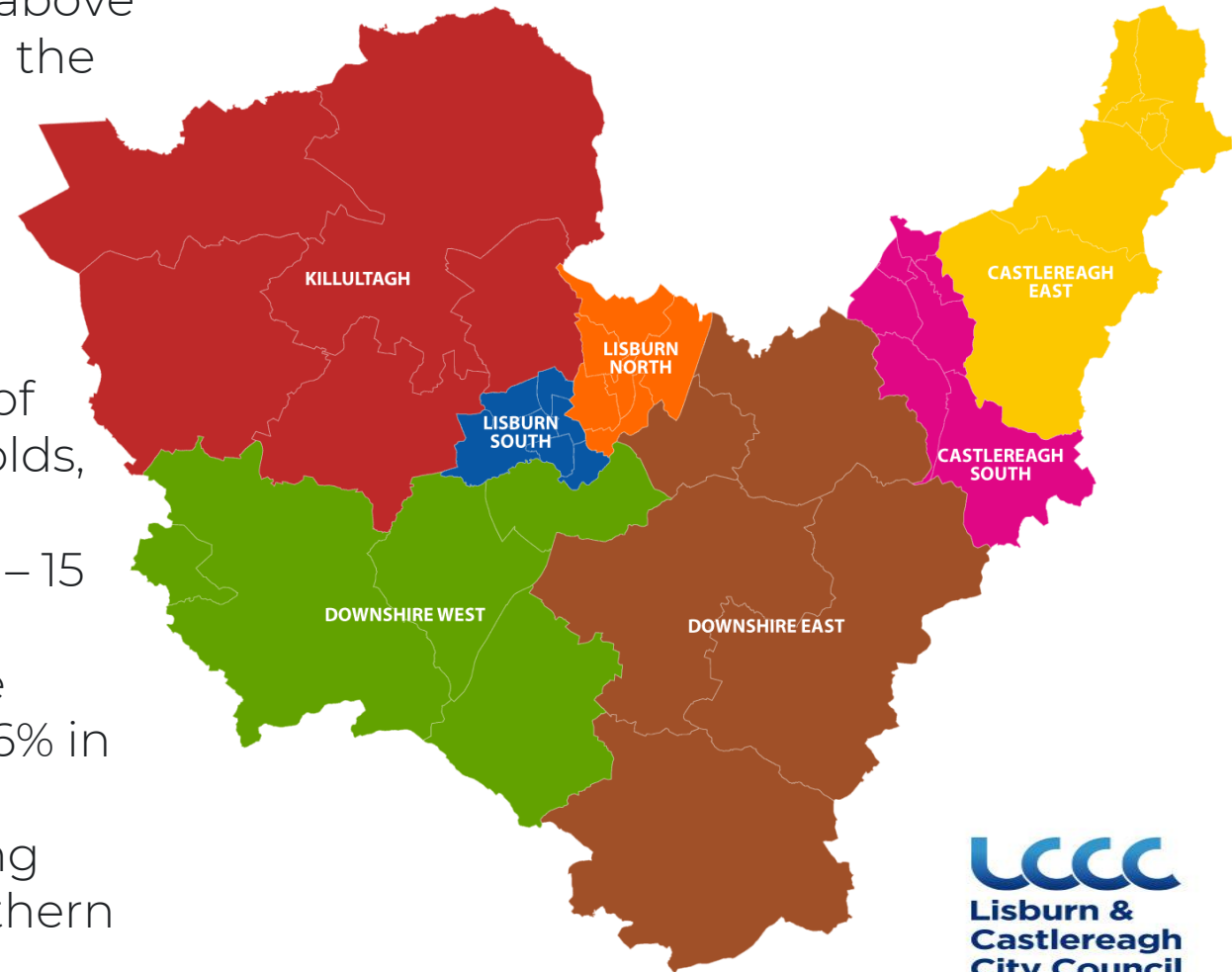
David Maze – Climate and Sustainability Officer

Introduction – Our Council Area

Lisburn & Castlereagh City Council area stretches from the shores of Lough Neagh in the west to the hills above Dundonald in the east and from the Belfast Hills in the north to the Dromara Hills in the south.

Key Statistics:

- A total area of 504 km²
- A population of more than 149,915, an increase of 9.8% since 2012 and more than 60,000 households, an increase of 12% since 2011.
- 20% of the council areas population are aged 0 – 15 years old.
- The council area is home to around 5000 active business as of 2022 with business making up 66% in services, 8% in construction and 14% in the production / manufacturing sector all constating towards the lowest unemployment rate in Northern Ireland.



What climate change is happening in our area?

Overall warming trend - Temperatures rise consistently from historical baselines to higher global warming levels and annual average temperature increases.









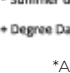
Increase in summer temperatures – Daily max temperature reaching 25°C will likely increase.

Winters become milder - Winter average temperature increases showing a +0.9°C (1.5°C) to +2.2°C (4°C) increase leading to reduction in frost periods.

Precipitation patterns shift - Summer precipitation decreases whilst winter precipitation increases.

Growing, Cooling, Heating Degree Days – Daily mean temperature higher than 5.5°C increases whilst daily mean temperature less than 15.5°C decreases.

Seasonal contrast intensifies - Hotter, drier summers and warmer, wetter winters become more pronounced with increasing global warming.

	0.6°C GWL Baseline 1981-2000	1.0°C GWL Recent Past 2001-2020	1.5°C GWL Paris Agreement	2°C GWL Guidance: Prepare	4°C GWL Guidance: Assess risks
 Summer Days* Daily maximum temperature > 25°C High daytime temperatures with health impacts for vulnerable people at risk of hospital admission or death. Transport disruption – e.g. track buckling on railways. Can also indicate periods of increased water demand.	1 1 to 2	4 2 to 6	4 3 to 7	6 4 to 8	18 15 to 26
 Hot Summer Days* Daily maximum temperature > 30°C Increased heat related illnesses, hospital admissions or death. Further transport disruption – e.g. track buckling on railways, road melt. Overhead power lines become less efficient.	0 0 to 0	0 0 to 0	0 0 to 0	0 0 to 1	2 1 to 4
 Extreme Summer Days* Daily maximum temperature > 35°C Increased heat related illnesses, hospital admissions or death affecting not just the vulnerable. Further transport disruption – e.g. track buckling on railways, road melt.	0 0 to 0	0 0 to 0	0 0 to 0	0 0 to 0	0 0 to 0
 Tropical Nights Daily minimum temperature > 20°C Health impact due to high night-time temperatures with potential for heat stress. Vulnerable people at increased risk of hospital admission or death.	0 0 to 0	0 0 to 0	0 0 to 0	0 0 to 0	0 0 to 0
 Frost Days Daily minimum temperature < 0°C Cold weather disruption due to higher than normal chance of ice and snow.	41 41 to 42	30 23 to 36	25 21 to 32	21 15 to 33	8 3 to 15
 Icing Days Daily maximum temperature < 0°C More extreme than frost days, so more severe cold weather impacts.	0 0 to 0	0 0 to 1	0 0 to 0	0 0 to 0	0 0 to 0
 Growing Degree Days* Daily mean temperature: °C > 5.5°C Energy available for plant growth over a year. This is not a measure of season length.	1,542 1,540 to 1,545	1,724 1,697 to 1,807	1,807 1,745 to 1,843	1,937 1,828 to 1,976	2,379 2,259 to 2,520
 Heating Degree Days* Daily mean temperature: °C < 15.5°C Indicator of energy demand for heating.	2,440 2,437 to 2,441	2,252 2,199 to 2,279	2,173 2,127 to 2,232	2,057 2,004 to 2,162	1,678 1,606 to 1,814
 Cooling Degree Days* Daily mean temperature: °C > 22°C Indicator of energy demand for cooling.	4 4 to 4	9 7 to 11	9 8 to 14	13 10 to 17	38 32 to 54

* Summer days above the stated temperature thresholds can occur at any time of year

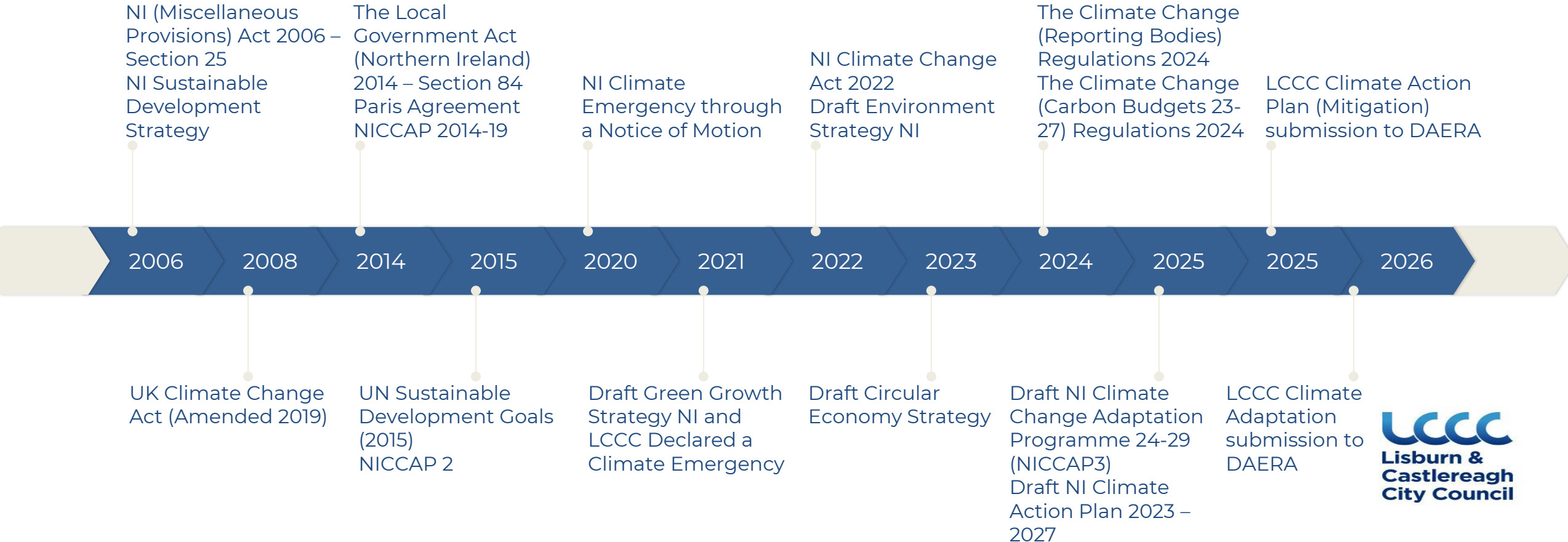
+ Degree Days are not a number of days, but the number of degrees the daily average temperature exceeds the threshold, each day, added up over a year.

*All data taken from the Met Office: Climate Report for Lisburn and Castlereagh generated on the 12/01/2026

What is the result of this for Council?

In 2021, LCCC passed a Notice of Motion declaring a Climate Emergency. Since then, the Council has committed to reducing its impact on the effects of Climate Change and has committed to developing a Sustainability Strategy and Climate Action Plan.

This position has developed and been directed by the relevant legislative frameworks:



Lisburn and Castlereagh City Council Commitment

LCCC is committed to playing its part in a just transition to achieving Net Zero by 2050 and central government interim targets related to:

- 🎯 Greenhouse gas emission reduction target for 2030, 2040 and 2050 as set by DAERA.
- 👥 Collaboration with central government 'Sectoral Plans' and 'Carbon Budgets' as set by DAERA.
- 📄 Reporting local authority progress to DAERA in compliance with the Climate Change (Reporting Bodies) Regulations (NI) 2024.

[Development of our Sustainability Strategy 2025 – 2029](#)



Our purpose

- Set out the **Council's commitment** to our environment, society and economy by addressing climate change and help its employees and the local community to **understand and effectively respond** to climate change impacts.
- Help to **transition to a low-carbon, competitive and just economy** at local, regional and national levels and ensure LCCC is making its **fair contribution** towards national and global climate targets under the Paris Agreement, Climate Change Act and the Sustainable Development Goals.
- Position the area on the map for **green investment** and demonstrate **climate leadership** as a responsible and fair Council and ensure that the benefits of climate action are **equitably distributed** and create a framework to **measure, monitor and reduce Emissions**.

[How will this be achieved?](#)



Our vision and goals

A civic and inclusive leadership style working to embed and safeguard future social, economic, and environmental sustainability.

- **Reducing energy consumption** across council facilities.
- Exploring **viable renewably generated** energy sources.
- **Training all staff** and **Elected Members** in climate awareness.
- Becoming a **civic leader** by promoting sustainability.
- **Protecting and enhancing** native biodiversity.
- Promoting **environmental protection**.
- Developing a **council policy to give sustainability direction**.
- Developing and delivering a **Climate Action Plan**.
- Developing and delivering a **Climate Adaptation Plan**.



LCCC – Climate Action Plan (Appendix 1 of the LCCC Sustainability Strategy)

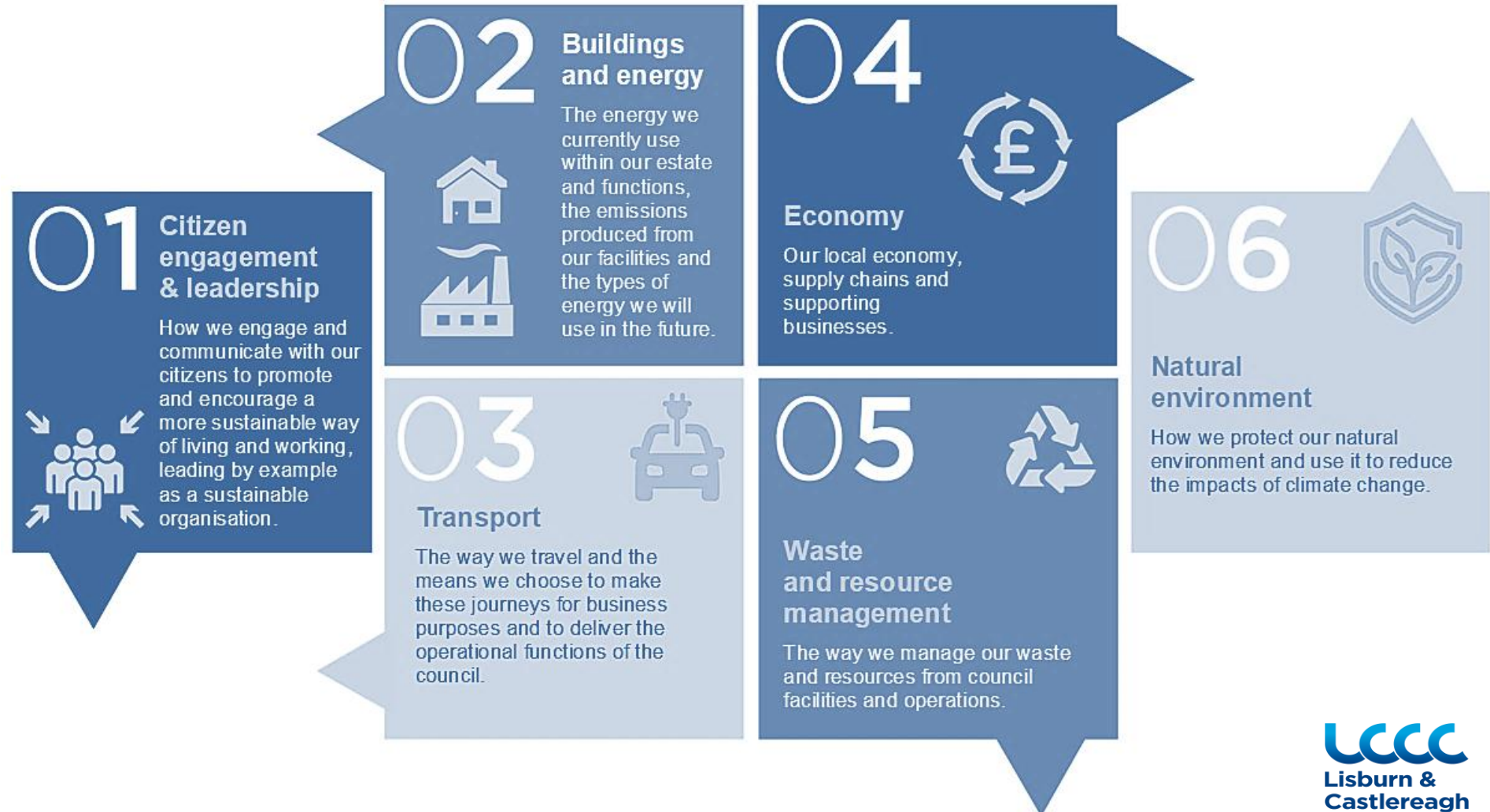


- Council has developed a Climate Action Plan to guide all service unit actions.
- The Climate Action Plan supports the goal of becoming a net zero, resilient Council by 2050.
- Council Officers identified, prioritised and refined actions through workshops and technical meetings since May 2022.
- Actions are cross-referenced with the Community Plan, Local Development Plan and Corporate Plan, and organised under six action areas in LCCC's Sustainability Strategy.

Targeted Action Areas

Lisburn & Castlereagh Council has identified 6 internal action areas to target through its Sustainability Strategy and Climate Action Plan. The purpose of which is to understand our current position and to target the reduction of our climate impact.

They are:



Targeted Action Areas (continued)



Citizen Engagement and Leadership

- Embed sustainability in decision making, officer training and engagement.
- Enable community-led climate action.
- Encourage council events to be sustainably friendly.
- Strengthen public led engagement and awareness.



Buildings and Energy

- Understand and establish a baseline of council's energy usage. The Year 2024/25 measured emissions = 6274 tCO₂e total.
- Beginning to record scope 3 emissions.
- Undertook four energy reduction feasibility studies on council sites.



Transport

- Continue to support and offer LCCC staff low carbon travel.
- Continue to encourage staff and communities to travel sustainably.
- Continue to consider and investigate a reduction in our fleet emissions.



Economy

- Continue to Support sustainable tourism initiatives.
- Procurement for a Green electricity tariff across the council estate.
- Support SME transition to greener practices.
- Continue to promote shopping locally.



Waste and Resource Management

- Promote the reduction of single use plastic and food waste.
- Promote reuse and refill initiatives.
- Invest in modern recycling services.
- Continue to provide waste education services to our communities.



Natural Environment

- Continue to implement the local Biodiversity Action Plan.
- Reuse and restore legacy landfill sites.
- Expand tree cover and green infrastructure.
- Continue to deliver measurable nature-based projects.

Why? - Better Neighbourhoods: Green, Healthy, Connected

Understand the challenge locally: This local evidence ensures our Action Plan responds to real, place-based risks.

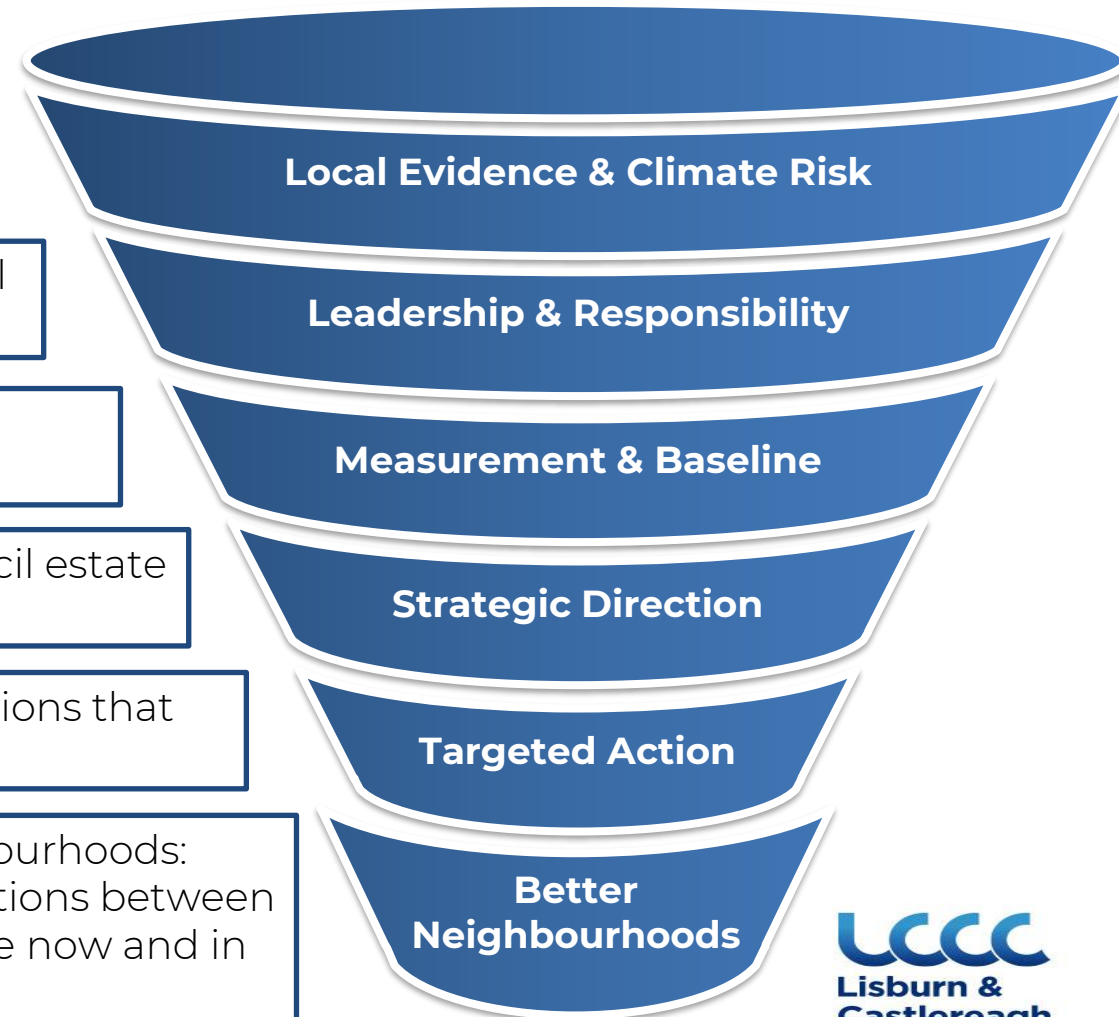
Set direction and accountability: This leadership role helps set Council on the right path for a future shared action response.

Know our starting point: This evidence ensures climate actions are targeted and appropriate.

Plan for long-term resilience: Actions are embedded across the council estate and functions ensuring a coherent joined-up delivery.

Turn strategy into action on the ground: Deliver practical, targeted actions that maximise council and local benefits through climate initiatives.

Green, Healthy, Connected places: The result is more resilient neighbourhoods: greener environments, healthier communities and stronger connections between people, places and nature will enable us to cope with climate change now and in the future.





Thank you

David Maze – Climate and Sustainability Officer

[Email: david.maze@lisburncastlereagh.gov.uk](mailto:david.maze@lisburncastlereagh.gov.uk)

Tel: 028 92 447 724

Mob: 07356365777

[Sustainability - lisburncastlereagh.gov.uk](http://lisburncastlereagh.gov.uk/sustainability)