



# Better Neighbourhoods in practice: Delivering Council's Play Park Strategy 2020-2030



Fermanagh & Omagh  
District Council  
Comhairle Ceantair  
Fhear Manach agus na hÓmaí

John News  
Director of Environment & Place  
27 May 2026



## Population

**116,800**

Up 3% since 2011

## Households

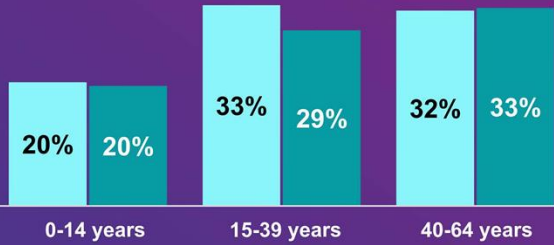
with usual residents

**45,700**

Up 10% since 2011

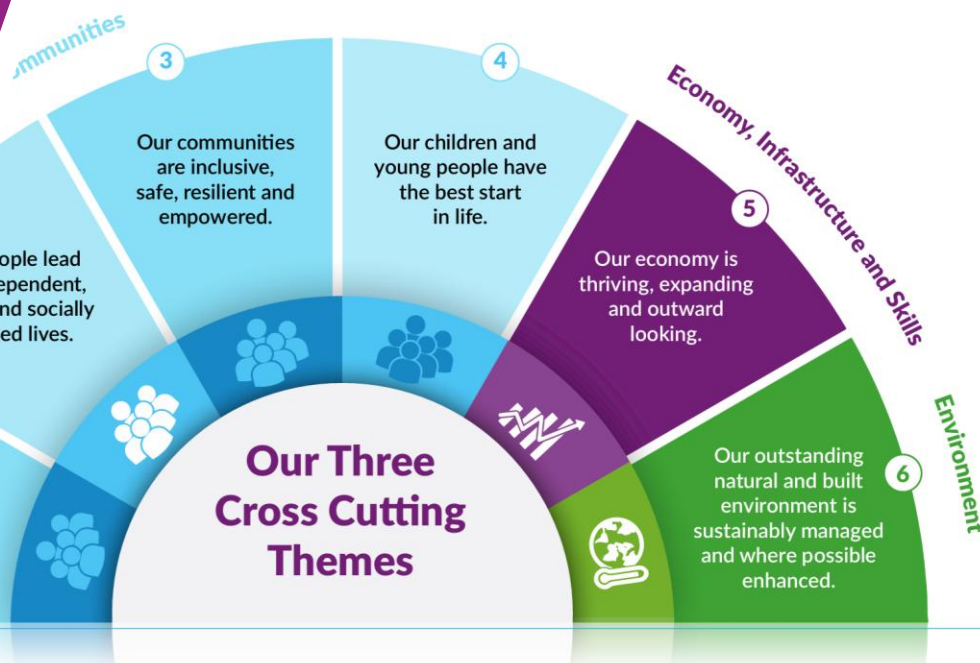
### Age

2011  
2021



- Proportion of young people lead people decrease
- Proportion of older people increase

people are happy and well - socially, mentally and emotionally.



Omagh northwards to Derry/Londonderry, eastwards to Belfast and southwards to Dublin.

### Area

**3,000 km<sup>2</sup>**

Largest geographically of the 11 Council districts but with the smallest population at 117,400

Including an airport, a UNESCO World Heritage Site and an AONB

### Domestic Properties

**48,082** (April 2019)

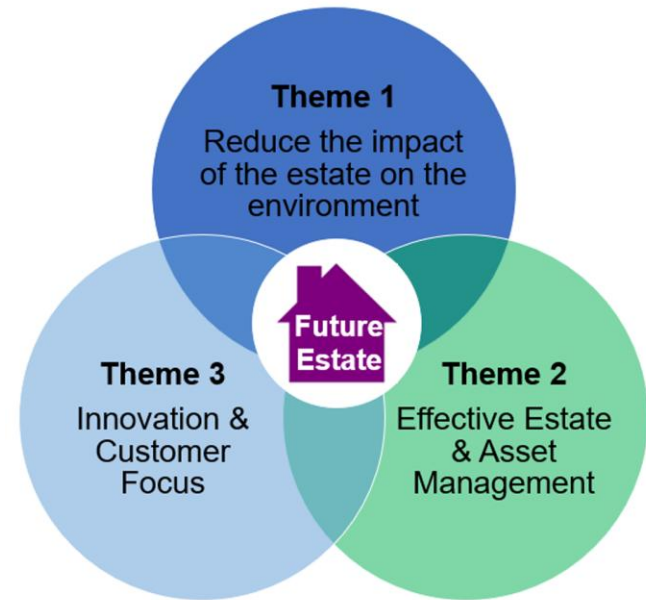
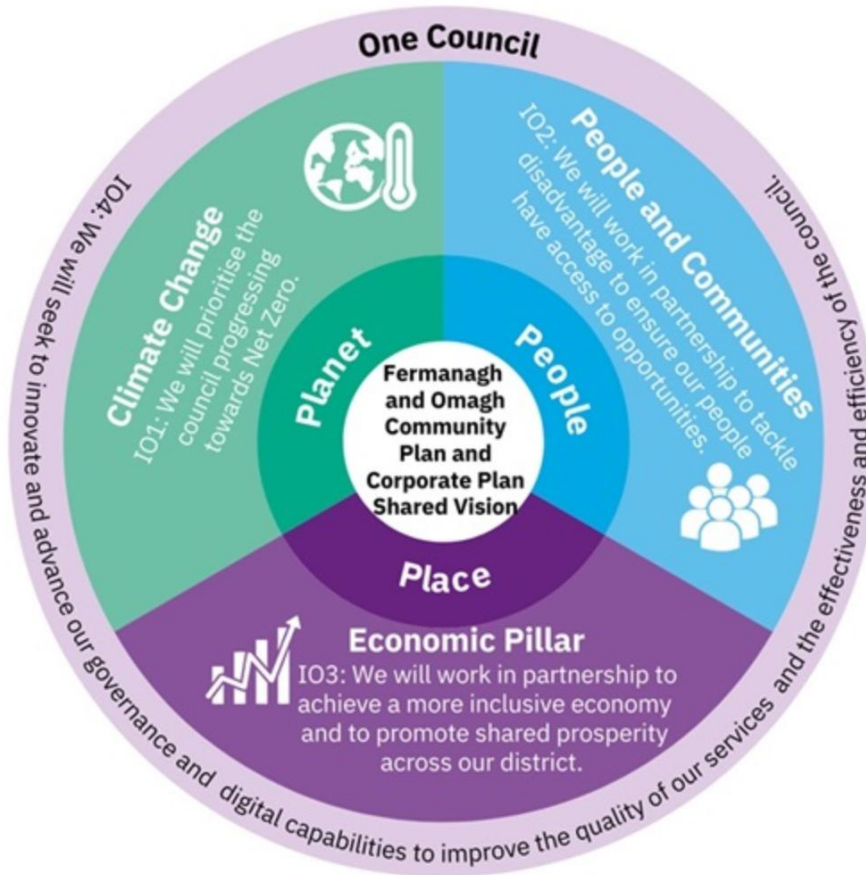
### Roads

- 0km of Motorway
- 0.6km of Dual Carriageway
- 321km of A Class Roads
- 446km of B Class Roads
- 884km of C Class Roads





# Corporate Plan 2024-28 & Estates Strategy



# The challenge (2019)...

2019 independent review identified:

- Inconsistent legacy (pre-2015) provision across the district
- Inconsistent quality of provision
- 63% of the current play park assets are failing below a 60% Play Value (Silver Standard) quality threshold.
- Insufficient provision of accessible and inclusive play opportunities for children and young people with a disability
- Opportunities to promote structured and unstructured (free/self-guided) play
- Opportunities to promote positive intergenerational activity and interaction



The strategy has identified the number, type and standard of play parks to be provided on a Ward basis across the district



- Fields in Trust (FIT) Play Value
  - Independent
  - Objective
  - Reproducible

## Criteria:

1. Location (inc. proximity, accessibility)
2. Play opportunities (inc. inclusion)
3. Maintenance (inc. sustainability)

- 'Gold' (PV=>70; Excellent)
- 'Silver' (PV=>60; Good)
- 'Bronze' (PV=>50; Average)
- PV<50 = Poor

Play Park Strategy aspires to 'Gold' but will upgrade, and maintain, to at least 'Silver'

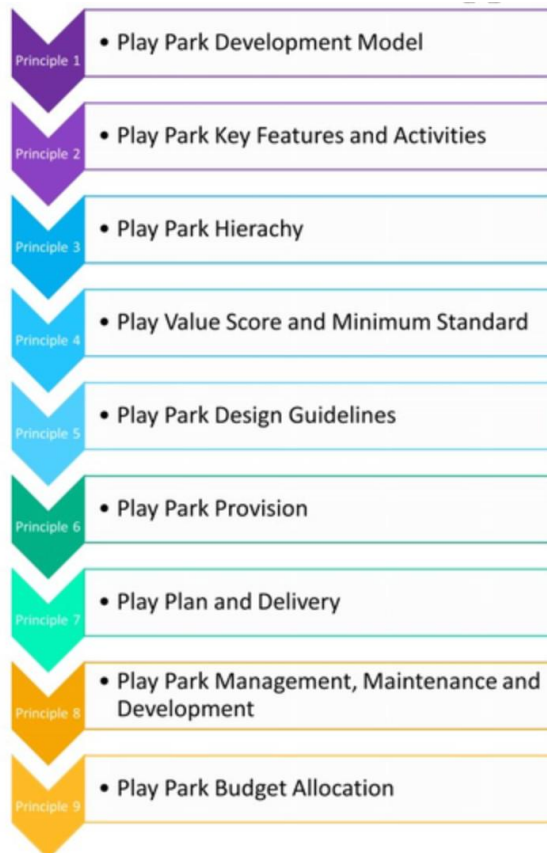




# Council's response...



## Play Park Strategy 2021 - 2030



# Consistency and transparency...

| Type  | Description  | Guidance Specification   |
|---|--|--|
| <p><b>Local Equipped Area for Play (LEAP)</b><br/>Recommended for areas with a population of 250-1,000 people</p>                 | <p>Unsupervised play areas that are equipped for children of early school age. Range of different types of play equipment. Park to be located within 5 minutes of walking time from home.</p>  | <p>Walking distance 400m<br/>(5 minutes walking time)<br/>Minimum dimensions 20 x 20 m<br/>Provision of 5 - 8 pieces of equipment</p>  |
| <p><b>Neighbourhood Equipped Area for Play (NEAP)</b><br/>Recommended for areas with a population of 1,000+</p>                   | <p>Unsupervised play areas intended to service a substantial residential area. Whilst sharing similar characteristics to LEAPs, NEAPs feature a significant range of different types of play equipment. It is equipped mainly for older children but with opportunities for younger children. Park recommended to be located within 15 minutes walking time from home.</p>   | <p>Walking distance 1000m<br/>(15 minutes walking time)<br/>Minimum dimensions 31.6 x 31.6 m<br/>Provision of 5 - 8 pieces of equipment</p>  |
| <p><b>Destination Play Park (DPP)</b><br/>Recommended as a site to attract visitors from both across and outside the district</p> | <p>Play areas located at key sites such as parks in the district with the aim of attracting visitors from both within and outside the district for longer visits. They normally provide car parking, picnic settings and access to wider facilities such as public toilets and potentially a café. Also known as District Play Areas, they provide an important family activity with children usually accompanied by an adult. These sites should be welcoming to all children with specialist equipment to satisfy inclusivity and accessibility.</p> | <p>Large well-developed play park with a diversity of play opportunities and themes. They should, where possible, feature support facilities including car parking, toilets, shelters, picnic settings, furniture and drinking fountains located in central or unique sites with pleasant surroundings preferably that exhibit a strong natural, social or cultural feature associated with the space.</p> |

- 47 play parks completed
- 95% of redeveloped play parks Gold PV
- 2/3 Destination Play Parks completed
- 8/19 'green space' transformations completed
- £3.5m investment to 31 March 2026
- £517,697 UK Govt 'Shared Prosperity Fund'
- £904,000 SEUPB PEACEPLUS funding secured
- +10 'in progress' to complete by 31 March 2027



**PEACEPLUS**  
Northern Ireland - Ireland

Co-funded by the



European Union



UK Government



Rialtas na hÉireann  
Government of Ireland



Northern Ireland  
Executive  
[www.northernireland.gov.uk](http://www.northernireland.gov.uk)

# DEA progress...(31 March 2026)

## Enniskillen

**9 Upgrades**

7 Gold Standard  
2 Silver Standard

## Erne East

**7 Upgrades**

7 Gold Standard

## Erne North

**5 Upgrades**

5 Gold Standard

## Erne West

**3 Upgrades**

3 Gold Standard



Upgrading..



## Mid Tyrone

**6 Upgrades**

6 Gold Standard

## West Tyrone

**2 Upgrades**

2 Gold Standard

## Omagh

**5 Upgrades**

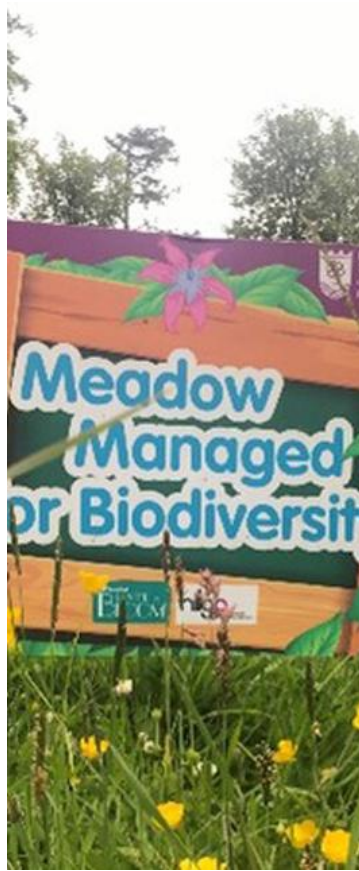
5 Gold Standard







Children learning to make compost at Nature Makes Sense events.





## Re-imagining play... Fermanagh Lakeland Forum

- Destination playpark
- Pump track
- Outdoor watersports
- New cycle, walking and running trails
- Accessible
- Inclusive
- Sustainable





Fermanagh & Omagh  
District Council  
Comhairle Ceantair  
Fhear Manach agus na hÓmaí

**Thank you**

**John News  
Director of Environment and Place**



*Killyfole*