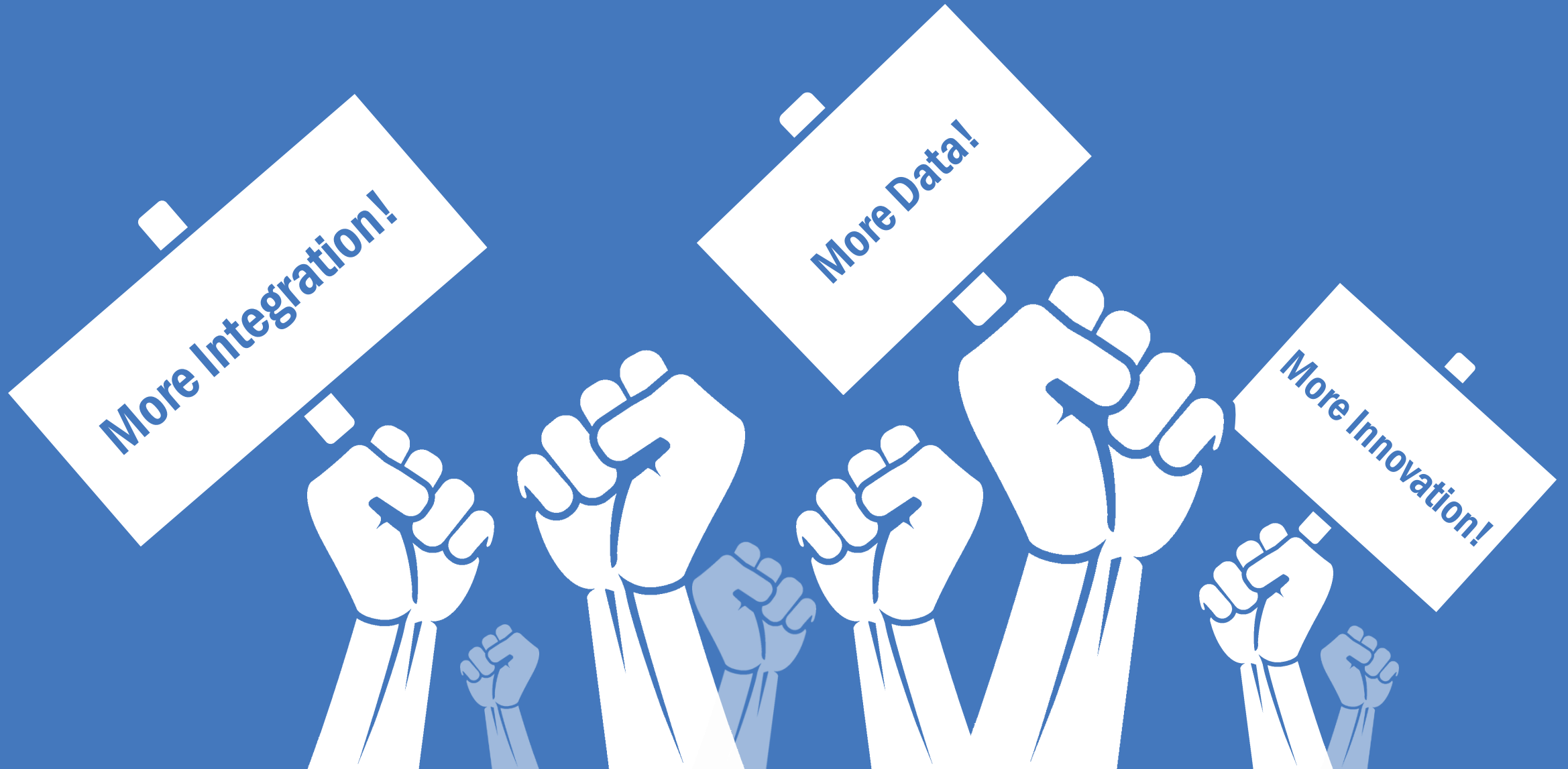


**YOTTA**

FROM DATA TO DECISIONS

# REVOLUTION!



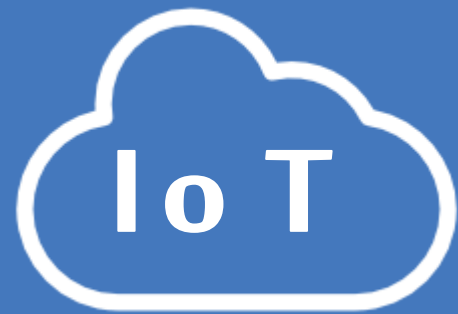
**1995**

**90% UNSTRUCTURED**

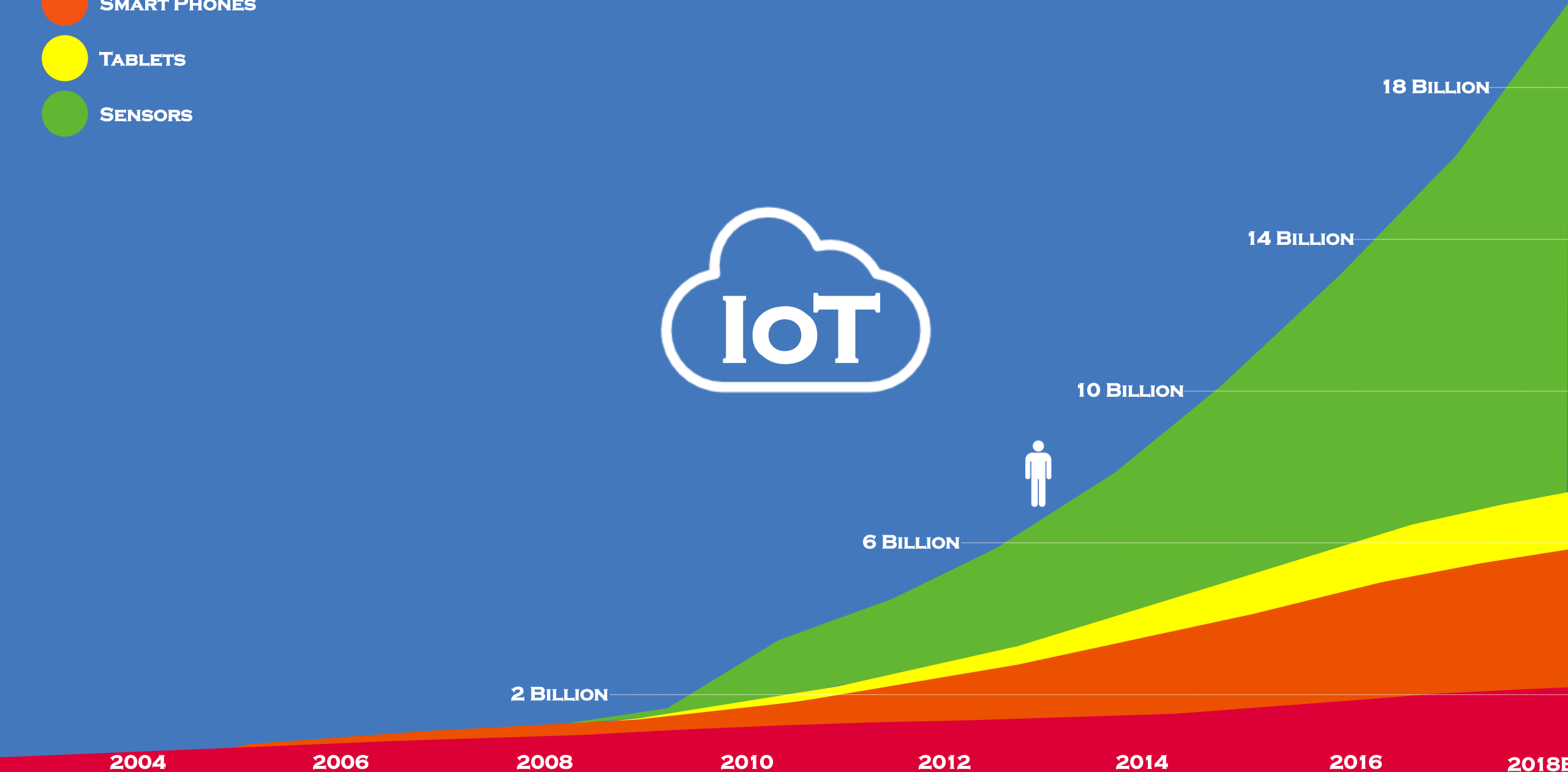
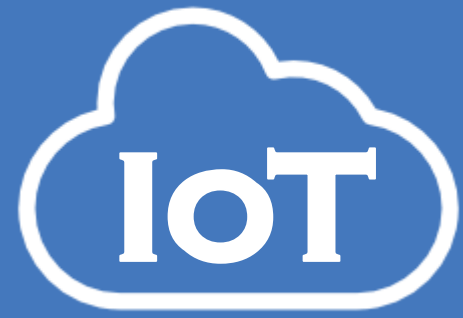
**X500MB PER SECOND**

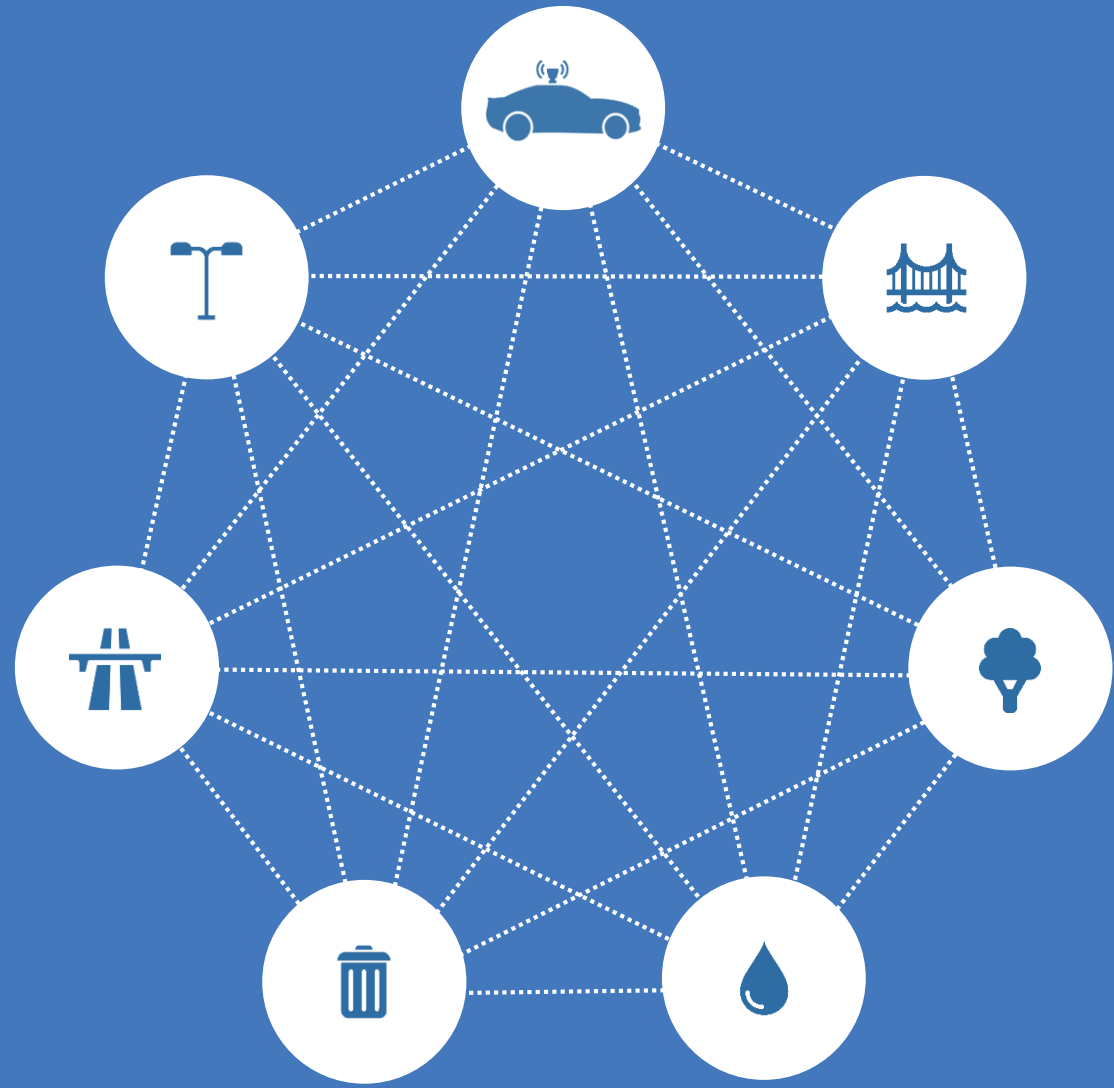






- PERSONAL COMPUTERS
- SMART PHONES
- TABLETS
- SENSORS









**DANGER  
AVALANCHE**



View Project Video LKPM5 Inventory Map Advanced Help

Open Save Upload Map New RCI Run New Autopass Load Network Control Network Export Survey Project Loader Video Magnifier Fix 3D Report Table

View Condition by Survey  
 Explore by Section Label  
 SCRP1 / GRP Tester by Sur  
 Section With Surveys  
 Condition Surveys (Uncommitted)  
 Budget Group  
 Works Records Group  
 Hampshire  
 >> Hampshirecan2 <<  
 SCANNER Data  
 Root  
 Data  
 >> Root <<  
 1  
 2  
 3  
 4  
 5  
 6  
 System Survey (Over)

Table: Scanner Survey [ ... ]  
 Table: RCI  
 Table: RCI Lengths by RCI Run and Bin [RCI Run = 08/09 RCI A ...]  
 Table: Condition Sc...  
 Table: Cond...

Section Label	XSP Code	Feature Code	Start Chainage	End Chainage	RCI Score	RCI Bin		
57	10A3051NA.05	CR1	CW	2905.00	2915.00	200.6667	RED: Plan maintenance soon	60.00
58	10A3051NA.05	CR1	CW	2775.00	2785.00	196.0000	RED: Plan maintenance soon	60.00
59	10A3051NA.05	CR1	CW	2765.00	2775.00	111.2686	RED: Plan maintenance soon	60.00
60	10A3051NA.05	CR1	CW	2736.00	2745.00	170.0000	RED: Plan maintenance soon	60.00
61	10A3051NA.05	CR1	CW	2796.00	2806.00	158.2593	RED: Plan maintenance soon	60.00
62	10A3051NA.05	CR1	CW	2546.00	2556.00	117.2324	RED: Plan maintenance soon	60.00
63	10A3051NA.05	CR1	CW	2296.00	2306.00	205.3333	RED: Plan maintenance soon	60.00
64	10A3051NA.05	CR1	CW	2286.00	2296.00	94.8553	AMBER: Plan investigation soon	60.00
65	10A3051NA.05	CR1	CW	2127.00	2134.00	103.3333	RED: Plan maintenance soon	60.00
66	10A3051NA.05	CR1	CW	2117.00	2127.00	76.6667	AMBER: Plan investigation soon	60.00
67	10A3051NA.05	CR1	CW	1987.00	1997.00	68.3333	AMBER: Plan investigation soon	60.00

Engines... Go To GIS Coords Cond. Styles

Search place names

Beacon Bottom  
 Swanwick  
 Star  
 Coldeast

MS  
 A3051  
 Pa

Property: Value  
 - General  
 Name OS Raster 25K  
 Description 1:25k colour raster from Ordnance Survey  
 Summary Raster  
 Projection UTM / British National Grid  
 Selectable False  
 - Datasource  
 TIFF Images F... C:\work\AQM\OS-25k  
 Map Scale 1:25,000  
 - Style  
 Style Name Raster\_01

Scale: 1:5146  
 Cursor: #52331.498,309505.0134  
 GPS: #51582.4328,100500.1459  
 Elevation: 0

**HORIZONS** Section: 77A35 AK 05 Chainage: 45m Road Name: Unknown

5 14 1

PI 7  
 PM 3

PI 6  
 CC 2  
 PM 2

PI

Pinkney Ln

0809... 0809... 0910... 0910...

## Networks

5



NSG Numbered Streets (Type 3)  
Road Network 1,943km  
Sections 23,725  
Assets 175,288

## Streetlights

5



Daily Energy kWh 76,655  
Daily Energy Cost £19,163  
Faults on 236 of 127,759

## Jobs

+2



New Jobs 12  
Completed Today 18  
Outstanding Jobs 327

## Defects

12



Manage Defects

## Inspections

12



Streetlights  
Last change 31 Dec 2015

- Street Lamp
- Bollard
- Other Street Light
- Sign Illumination
- Belisha Beacon
- Subway Light
- Feeder Pillar

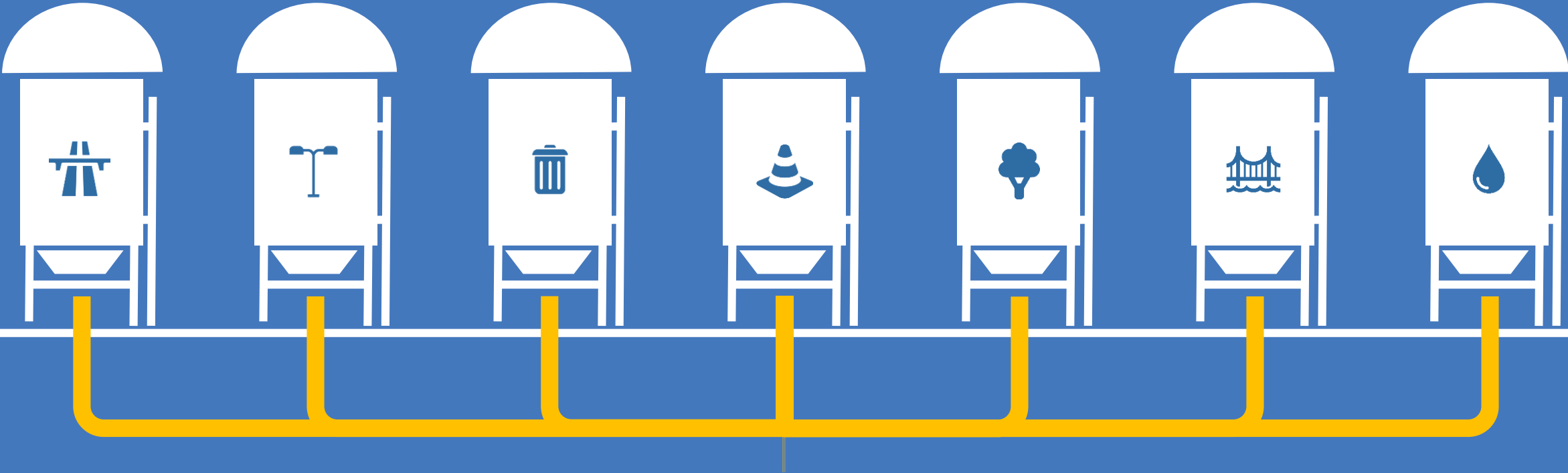
### Display preferences

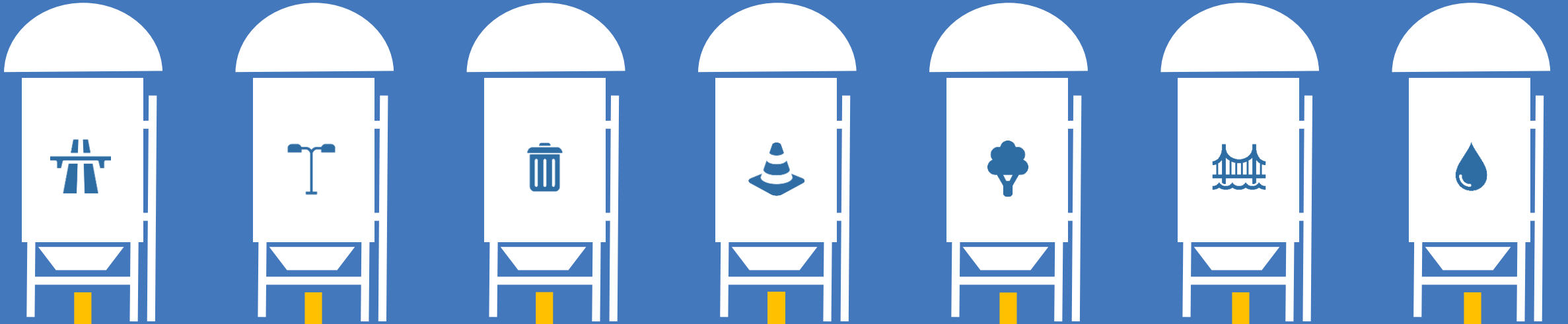
Select display function

Nightscape  ON



# DATA IS SILOED



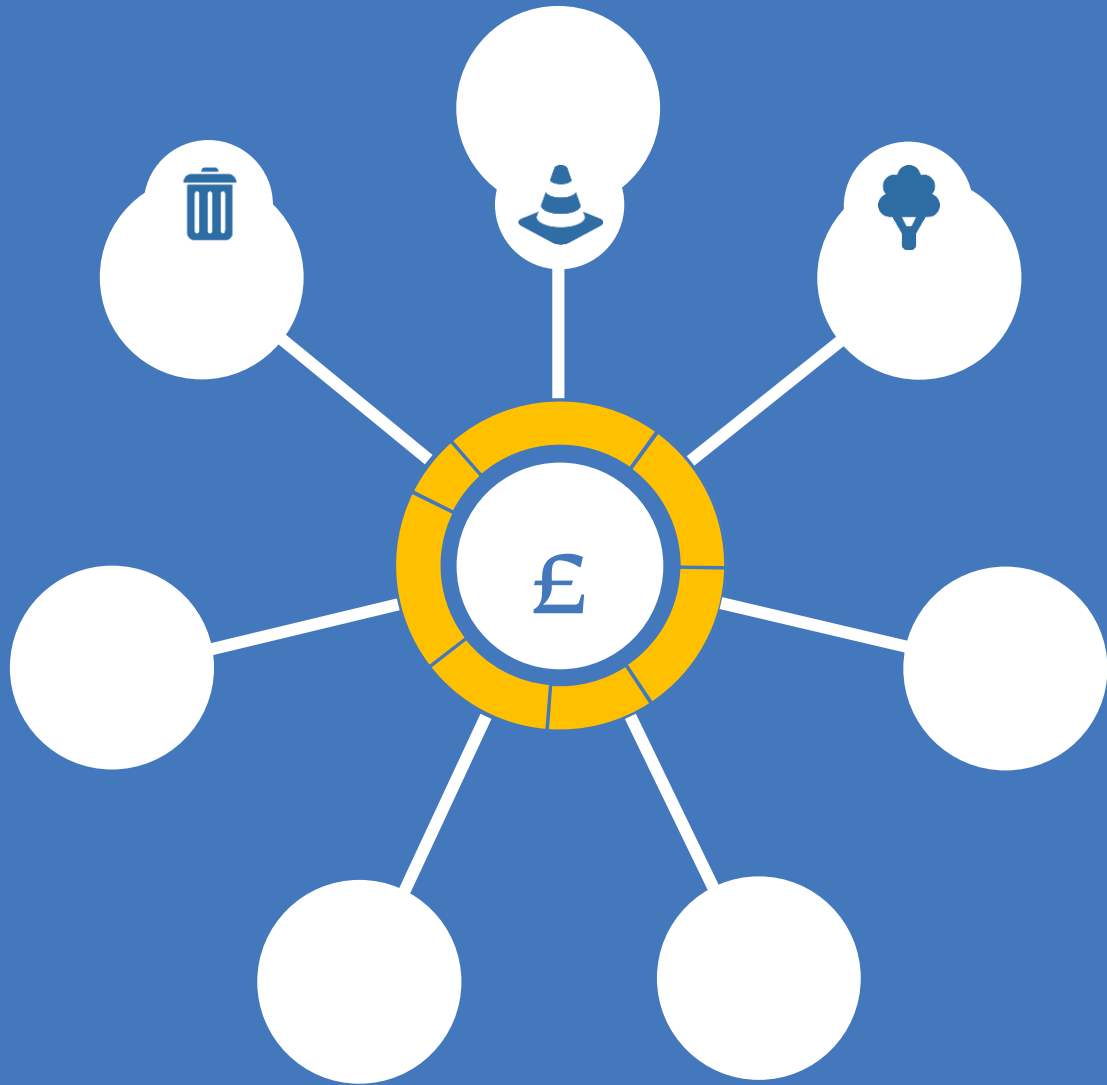
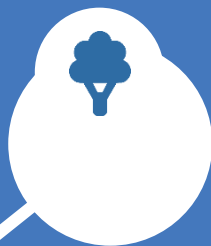


**IoT / SENSOR INTEGRATION**

**DATA VISUALISATION**

**MULTI-ASSET MODELLING**

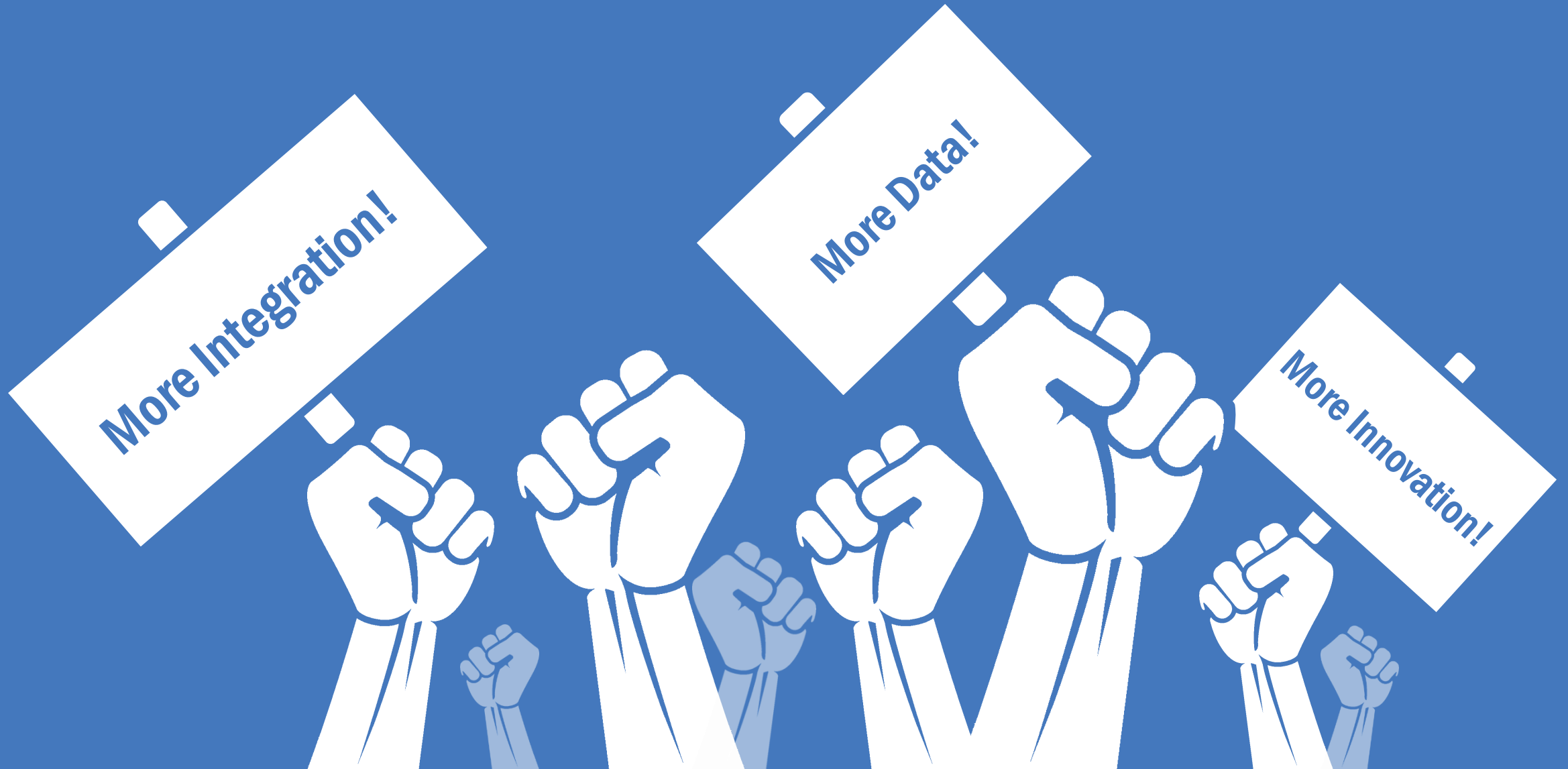
**INFRASTRUCTURE ASSET MANAGEMENT**







# REVOLUTION!



**YOTTA**

FROM DATA TO DECISIONS