



# ParksHerts

## Hertfordshire Parks Web Project

Liz Gore, Policy Manager

Aaron Niblett, Parks Project Officer

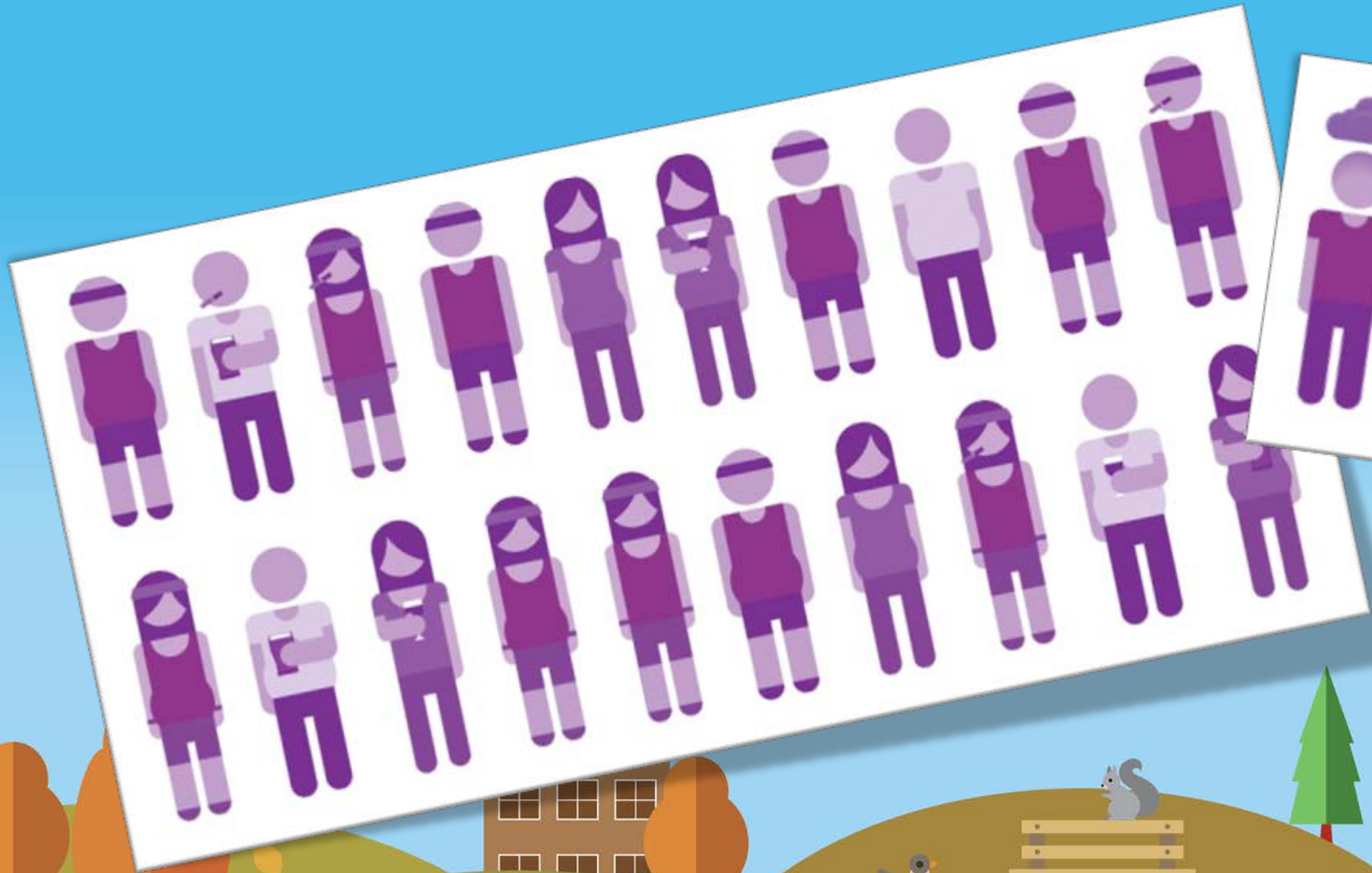
Hertsmere Borough Council

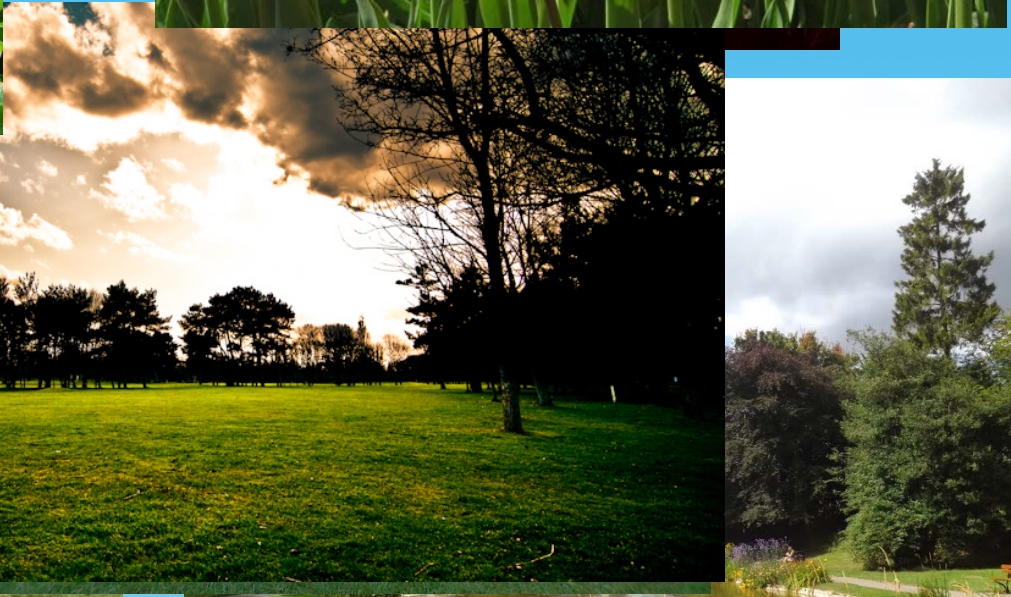


Let's get some fresh air

Lets get exploring >







# Perfect Timing

- Development of Hertfordshire Partnership Fund
- Buy in from County Council, 10 Districts and one Parish Council



# Project Specification

- Generic Appeal
- Fun and User Friendly
- Consistent Information
- Move away from 'Council speak'
- Data Collection
- Easy to Maintain



The background features a vibrant, stylized illustration of a park. At the top left, a large yellow sun is partially visible, with several short yellow lines radiating from it. Below the sun are two white, fluffy clouds. The sky is a solid light blue. In the foreground, there are rolling green hills. On the left, there are several trees with orange and yellow autumn foliage. A grey squirrel is sitting on the ground near the trees. In the center, a brown multi-story building with many windows stands on a hill. To its right, a wooden bench sits on a grassy slope. A grey squirrel is perched on the bench. Below the bench, a small pond with blue water contains two ducks. A green pine tree stands to the right of the pond. In the background, another brown building with a white section is visible. The overall scene is bright and cheerful, representing a community park space.

# ParksHerts

A mobile friendly website which aims to:

- Help local residents to make more of their valuable local open spaces and find and visit new parks
- Encourage people to make outdoor exercise part of their daily lives.



## Let's get some fresh air

Let's get exploring >



# ParksHerts



Let's get some fresh air



Let's get exploring >



SKIP

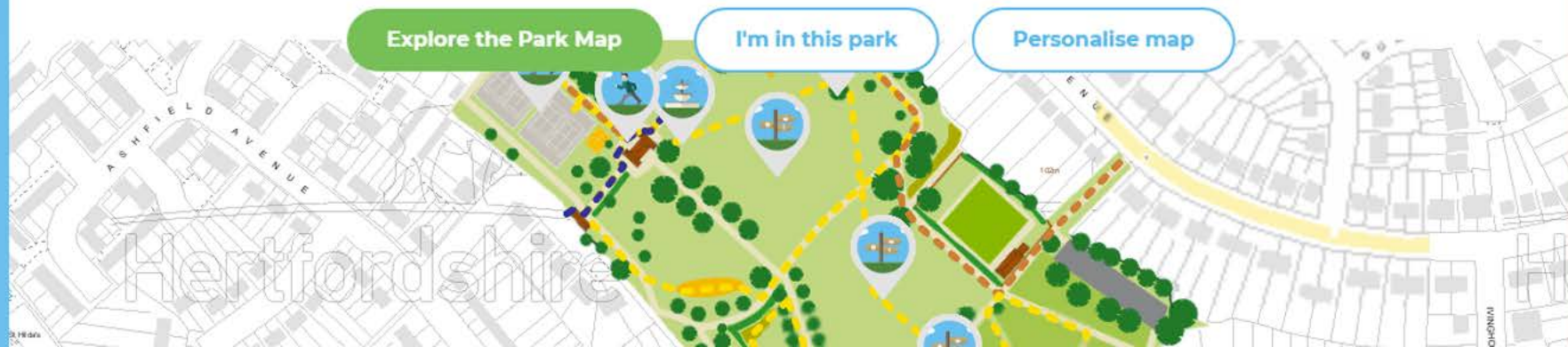




## King George Recreation Ground

110 Miles away Car Park, Tennis Courts and Sports Courts open October to March - 8am to 4pm, April to May - 8am to 7pm, June to September - 8am to 9pm, Toilets open Summer - 8am to 6.30pm, Winter - 8am to 3.30pm, Splash Pad open end of May to September - 11am to 6pm

8.3 ha award winning destination park in Bushey. 5 routes and 7 points of interest



## Park Information

[Share](#)[Print](#)

The park contains many facilities including a 250m<sup>2</sup> splash pad (new for 2017), large play area, challenging play equipment for teenagers, multi sports court, kickaround goals, tennis courts, table tennis tables, outdoor fitness equipment, sculptures, meadow with copse, open grassland, a cafe and free car parking.

A wide events programme continues, including the annual dog show, marathon, teddy bears' picnic and family fun days. Regular activities are held with charities and local community groups.

The Friends of King George Recreation Ground have represented residents and park users and acted as a conduit between them and the council since 1997. The Friends have been successful in raising funds for several projects including a unique and beautiful wrought iron circular seat around an old oak tree, commissioned from a local artist-blacksmith.

The park is also a designated 'destination' site for inclusive play.

[Visit the website >](#)

## On Site Facilities

Car Park (Free)



Disabled Access



Disabled Toilets



Dog Free Area



Dogs Welcome



Food & Drink



Pushchair Friendly Paths



Splash Park



Toilets



## Park Routes

### Fitness Trail

Distance 0.8 km  
Steps taken 1080

### History trail

Distance 0.4 km  
Steps taken 476

### King George Recreation Ground Easy Access

Distance 0.6 km  
Steps taken 771

### Fitness Trail

Distance 0.8 km  
Steps taken 1080

[View Route](#)



### History trail

Distance 0.4 km  
Steps taken 476

[View Route](#)



### King George Recreation Ground Easy Access

Distance 0.6 km  
Steps taken 771

[View Route](#)



[View more routes](#)

[View all routes on map](#)

## How to get here

### Parking:

Free Car parking is provided at the [main car park](#) accessed from King George Avenue.

Additional parking is available at the [overflow car park](#) off Chiltern Avenue next to the Bowls Club.

Please can we ask that you respect our neighbours and not park in the surrounding areas.

### Public Transport Information:

The nearest station is Bushey main line. The park is approximately 1.5km/mile from the station.

The 142 and 258 buses stop at the station and in Bushey High Street and Melbourne Road.

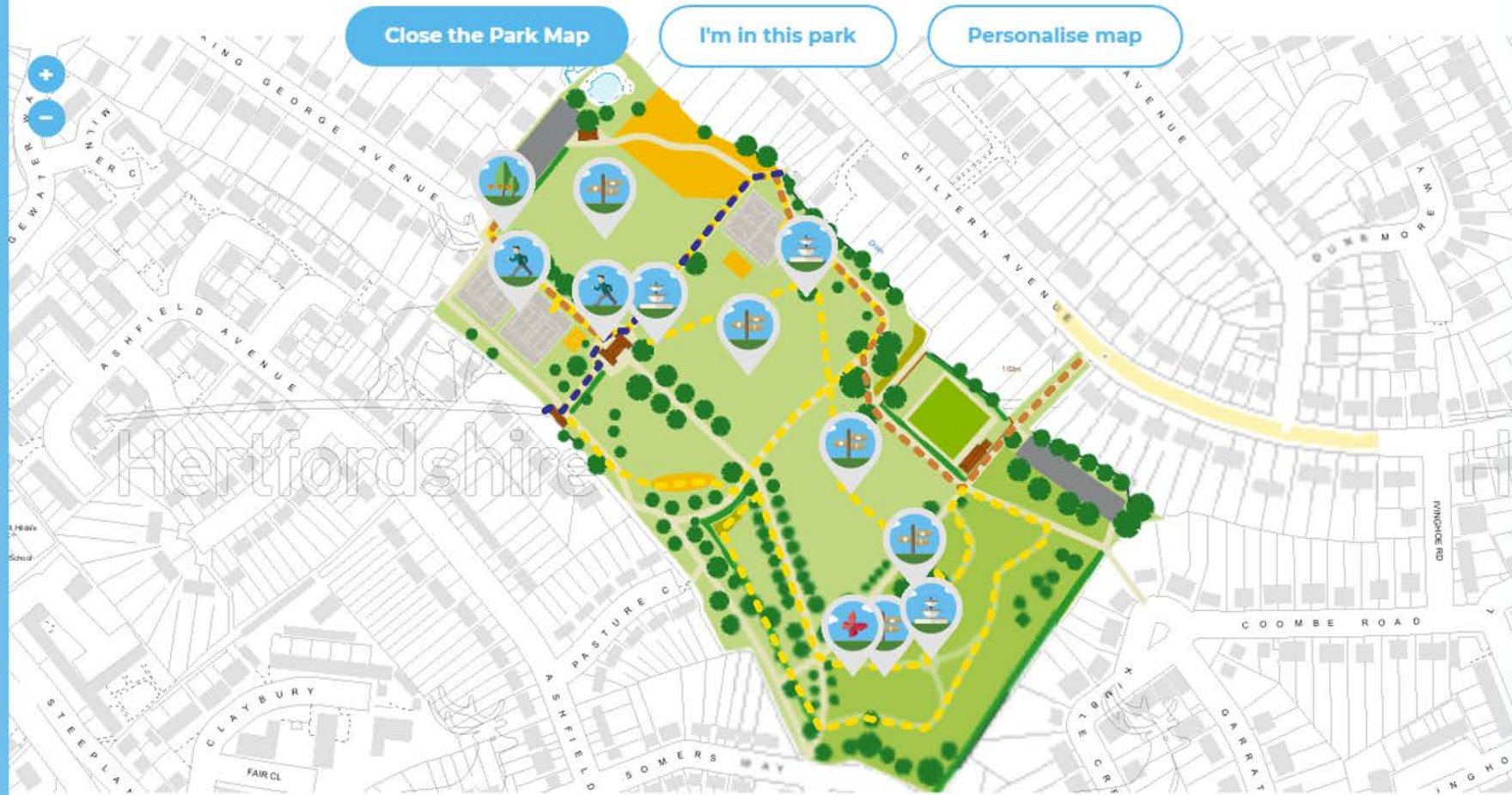
The 500, 550 and 551 buses stop in Chiltern Avenue.

For more information use Intalink website [www.intalink.org.uk/timetables](http://www.intalink.org.uk/timetables) or [www.nationalrail.co.uk](http://www.nationalrail.co.uk)

# King George Recreation Ground

📍 110 Miles away 🕒 Car Park, Tennis Courts and Sports Courts open October to March - 8am to 4pm, April to May - 8am to 7pm, June to September - 8am to 9pm, Toilets open Summer - 8am to 6.30pm, Winter - 8am to 3.30pm, Splash Pad open end of May to September - 11am to 6pm

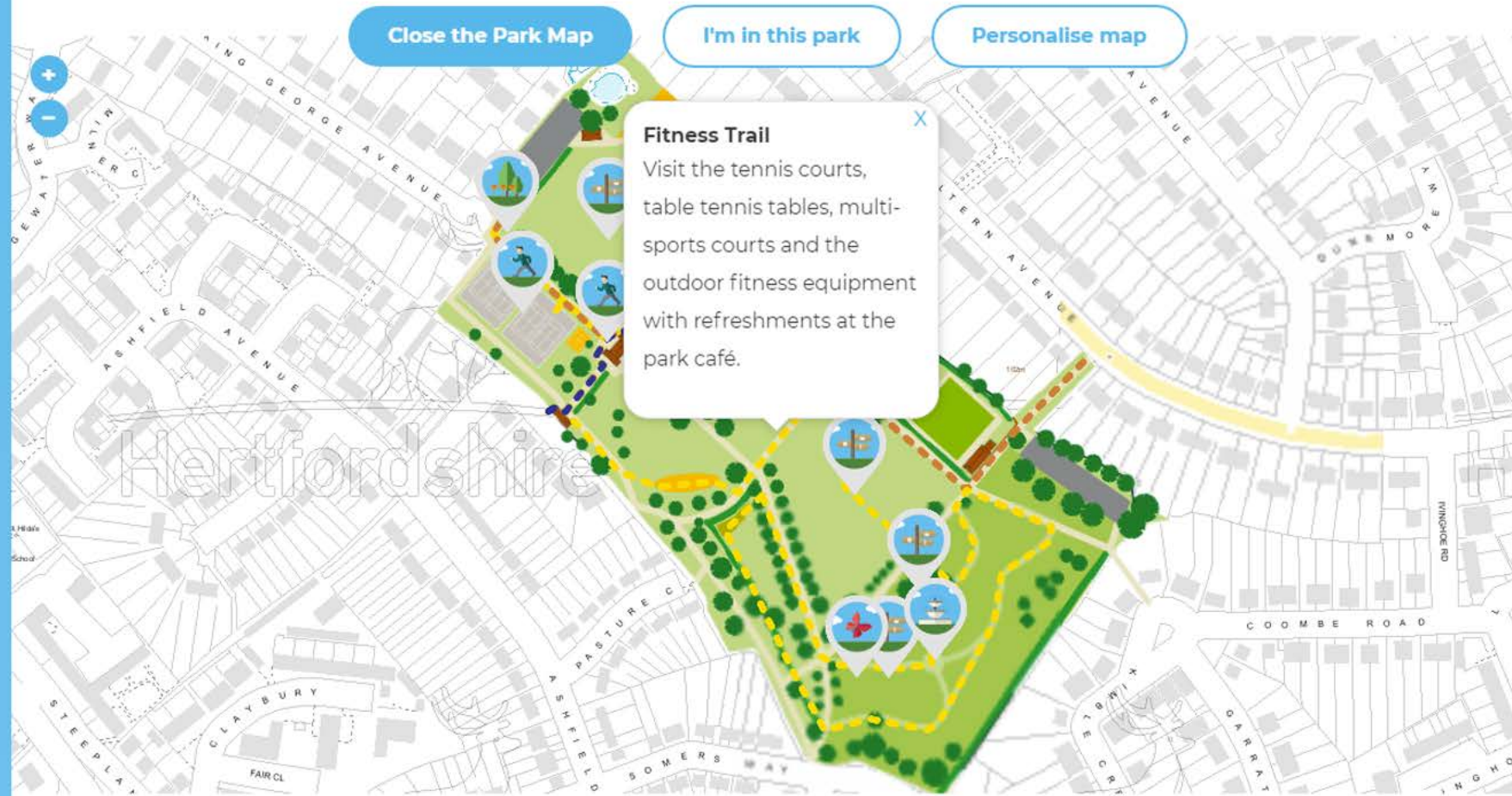
8.3 ha award winning destination park in Bushey. 5 routes and 7 points of interest



# King George Recreation Ground

📍 110 Miles away 🕒 Car Park, Tennis Courts and Sports Courts open October to March - 8am to 4pm, April to May - 8am to 7pm, June to September - 8am to 9pm, Toilets open Summer - 8am to 6.30pm, Winter - 8am to 3.30pm, Splash Pad open end of May to September - 11am to 6pm

8.3 ha award winning destination park in Bushey. 5 routes and 7 points of interest



## Events

Order by date ▼

### Chorleywood House Estate Local Nature Reserve Volunteer Session

Tuesday 16th October at 9:30am - 12:30pm.

Located at [Chorleywood House Estate Local Nature Reserve](#).

The Friends of Chorleywood House Estate meet on the first and third Tuesday of each month.

[View Event](#)



### Multisport Sessions - Waltham Cross Playing Fields

Tuesday 16th October at 6:00pm - 8:00pm.

Located at [Waltham Cross Playing Fields](#).

Free of Charge multisport sessions for those aged 11-19 years every Tuesday, 6-8pm at Waltham Cross Playing Fields.

[View Event](#)



### Cassiobury Park Green Gym

Wednesday 17th October at 10:00am - 1:00pm.

Located at [Cassiobury Park](#).

A great volunteering opportunity to help the environment, make new friends and get active.

[View Event](#)

#### Event Tags

Active

Cardio

Conservation

Exercise

Fitness

free

Fun

Health & Fitness

Nature

Volunteer

well-being

Wildlife

Multisport

Things to do

young people

Football

Family

Family Fun

Parkrun

Running

Children

Junior Parkrun

health

Orienteering

workout



## July is Parks Month – Come on and #TryANewParksHerts

Come on and #TryANewParksHerts With over 140 council owned parks and open spaces in Hertfordshire there really is something for everyone. As part of Hertfordshire's Year of Physical Activity (HYOPA) we'll be providing you with daily inspiration using the hashtag #TryANewParksHerts. Here's a few ideas to get you started. What do you want to do today? Have some ...

[Read post](#)

0 Comments

## Want to be part of something BIG?

Want to be part of something BIG? Hertfordshire County Council is attempting to set a new record for the greatest number of Health Walkers out walking on Monday 14 May. Taking place during National Walking Month and as part of Hertfordshire's Year of Physical Activity, the 3rd Mass Health Walk provides a bumper offering of over ...

[Read post](#)

0 Comments

## Love your Lunchtime – Visit our Town Centre Parks

Love your Lunchtime – Visit our Town Centre Parks Learn to love your lunchtime by escaping from the office into one of our fantastic Town Centre Parks. Just a short stroll can make you feel better and ready to face whatever the afternoon brings. Use ParksHerts to find your nearest town centre park and then grab your workmates and go! For ...



## Editing Bushey Rose Garden - Step 1 of 3

[Save & Preview](#) [Back to listing](#)

### Essential Details

Park Name:

Park Introduction:

Park Short Description:

Park Owner:

Opening Times:

## Bushey Rose Garden

#1 OF 14 FORMAL/ URBAN/ DECORATIVE

445 day visits - current events 890 visits per Hectare

### 1 Park Routes

1 MOST POPULAR ROUTES

Accessible garden circuit ✓ 0.07 views per day  
0.39km completed ✓

### 16 Points of Interest

3 MOST POPULAR POIS

- Coffee Cart ✓ 0.07 views per day
- Bird Feeder ✓ 0.05 views per day
- The Summer House ✓ 0.04 views per day

[Edit](#)  
[Deactivate](#)  
[Delete](#)

Average day visits

With 890 visits per Hectare for Bushey Rose Garden, thats...

- 831% Compared to parks in this region (95.55 visits per Hectare) #1 of 14 parks
- 932% Compared to Formal/ urban/ decorative parks (86.24 visits per Hectare) #1 of 14 parks
- 3889% Compared to all parks (22.31 visits per Hectare) #1 of 106 parks

Key

- This park
- Parks of this type
- Parks in this region
- All parks

## Editing Bushey Rose Garden - Step 2 of 3

[Save & Preview](#) [Back to listing](#)

Categories SEO Travel Details Location

Below you can set the central location point of a park by using either the marker on the map (Drag and Drop), or by inputting the values and using the search buttons.

Please note: Each search button will move the marker within map and should be used as a reference drag/drop the marker to your desired location.

Easting/Northing

Longitude/Latitude

[Back to step 1](#) [Save & Continue](#)

## Editing Bushey Rose Garden - Step 3 of 3

Image 1 Image 2 Image 3 Image 4 Image 5 Image 6

[Back to step 2](#) [Save](#)

# Promotion & Social Media



## ParksHerts

### Find your perfect park with ParksHerts

With over a hundred parks and open spaces in the county, there is so much more to see in Hertfordshire.

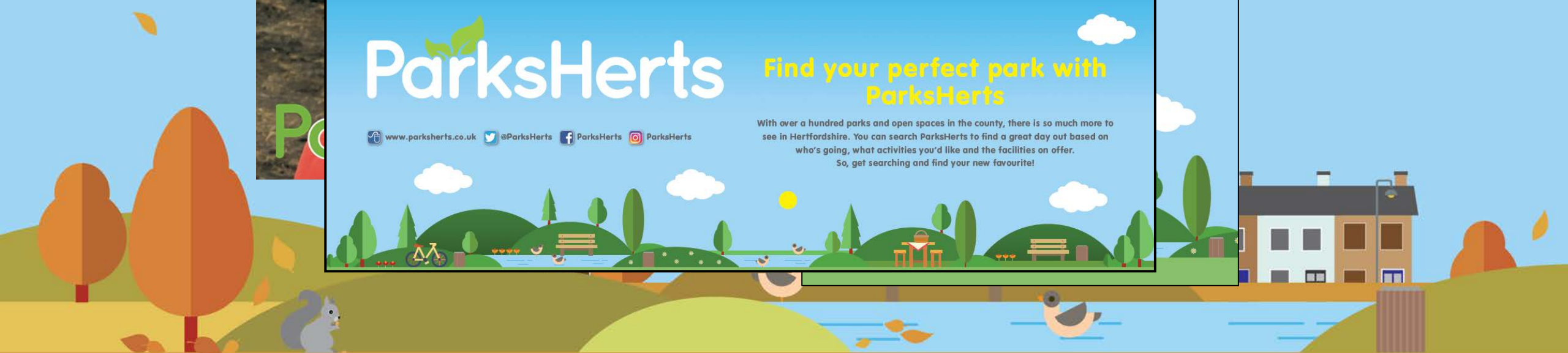
You can search ParksHerts to find a great day out based on who's going, what activities you'd like and the facilities on offer. So, get searching and find your new favourite!

## ParksHerts

### Find your perfect park with ParksHerts

With over a hundred parks and open spaces in the county, there is so much more to see in Hertfordshire. You can search ParksHerts to find a great day out based on who's going, what activities you'd like and the facilities on offer. So, get searching and find your new favourite!

[www.parksherts.co.uk](http://www.parksherts.co.uk) [@ParksHerts](https://twitter.com/ParksHerts) [ParksHerts](https://facebook.com/ParksHerts) [ParksHerts](https://instagram.com/ParksHerts)





**141**

Parks &  
Open  
Spaces



**1037**

Points  
of  
Interest



**97**

Routes to  
walk, run  
or cycle



**1000+**

Events  
promoted



**18,990**

Unique  
visitors



**66,368**

Page  
views



**404**

Twitter  
followers



**428**

Facebook  
followers



# Who uses the site?

## Most popular routes

- 'the whole family', looking to 'make a day of it'
- 'the whole family', 'getting some fresh air'
- 'just me', 'getting some fresh air'

## Most popular self-selected filters

- 'Activity Trail (wildlife)'
- 'Children's Play Area'





We know organisations managing parks don't have bottomless marketing resources. That's why we created HelloParks.

HelloParks' mission is to empower better promotion and engagement of these valuable, vibrant and inclusive community assets - and to help park managers easily attain insight on park usage.



## Features

HelloParks is packed full of innovative features to enable easy and effective promotion of parks and open spaces.

[Show me](#)

## Platform

HelloParks lives on a secure cloud platform, so there's no hosting or burdensome setup to worry about.

[Show me](#)

## Customise

HelloParks is offered with a range of additional customisation options to tailor implementation to individual requirements.

[Show me](#)



[www.parksherts.co.uk](http://www.parksherts.co.uk)



ParksHerts



@ParksHerts



ParksHerts

