

Designing Play Spaces
That Create a Sense of

Wonder





Michael Hoenigmann,
Managing Director

- 25 years in play industry
- Founder of Jupiter Play and Inclusive Play
- Jupiter Play celebrating 21 years
- Passionate about play value and challenging the norms.
- 2 terms as Chair of API
- Twice a Commonwealth Fencing Champion!



Family Run Business

- Celebrating 20 years as a premier independent play & sport design consultancy; with a passion for *doing things differently*.
- Home to some of the world's most unique and innovative equipment brands.
- Experienced team – varied skill set: Inclusive Specialists, Engineers, Contract Management, Product Designers an in-house Landscape Architect – part of our award-winning design team delivering many bespoke projects across the UK.

Learning points



- 01** Why is it important to create more sustainable play spaces?
- 02** How can we implement successful & sustainable play space design?
- 03** How can the procurement process help to achieve sustainability within play?

01 | The value of natural play





What is sustainability to us?

01

Engaging the next generation in nature; encouraging them through play and memory to love and care for the environment.

02

Creating spaces built for longevity that have a positive impact on the environment.



For a new generation, nature is more abstraction than reality. Increasingly, nature is something to watch, to consume, to wear – to ignore.

– Richard Louv, Last Child in the City

If we want children to flourish, to become truly empowered, let us allow them to love the earth before we ask them to save it.

- David Sobel





The wellbeing benefits

Mind actively encourages engagement with nature with its many benefits:

- Improve your mood
- Reduce feelings of stress or anger
- Help you take time out and feel more relaxed
- Improve your physical health
- Improve your confidence and self-esteem
- Help you be more active
- Help you make new connections
- Provide peer support.





Environmental & Economic Benefits

- It mitigates pollution
- It increases biodiversity
- It helps to minimise flood risk

- Increase value of surrounding properties
- It really can cost LESS to maintain
- Increased time spent lingering in nature can increase secondary spend



A shift in the value of nature?

The majority of Local Authorities across the UK confirmed a huge increase in the use of parks and the use of every single inch of the space, discovering previously ignored areas within the park.

53%

Of people quizzed said they appreciate local parks and nearby countryside and green belt more since social distancing measures were brought in.

35%

Just over a third of people said they were visiting local green space more often since lockdown.

57%

Over half felt they were more aware of the importance of such green spaces to mental health and wellbeing.

02 |

How can we create more sustainable play?



Planting for sustainability

- Increase biodiversity and pollination
- Encourages wildlife
- Absorbs Co2
- Improves soil quality
- Improves drainage
- Increased sensory stimulation
- Creates a beautiful space that people naturally spend more time in





Sustainable Shoots

Aligned to ISO141001 and only opting to work with suppliers who take care of the environment, we seek to offset our carbon footprint with our plant a tree schemes – *Sustainable Shoots*, launched in 2017.

For every play area we offer a free tree to be planted, raising awareness for environmental issues.

Future aims for sustainable shoots –

100

Planted trees by 2025.





Why is drainage so important?

Sustainable management of water is one of the ways landscape design can help to tackle the climate crisis. By playfully designing in drainage, we can help to create environments that enhance wellbeing, aid learning in children and increase resilience of the next generation.

Cost: Low maintenance, designing in drainage from the start can avoid costly interventions at a later stage and can be far more cost effective.

Environment: SuDS enhances biodiversity, they help to manage the flow of water in a way that mimics nature, reducing the impact on the drain network.

Aesthetics: Drainage that is considered as part of the design palette can visually enhance a space and add play value.



Swales



Green Roof



Rain Gardens

03 |

How can the procurement process help?



Tender Process Vs Collaborative Approach



Tender Process Vs Collaborative Approach



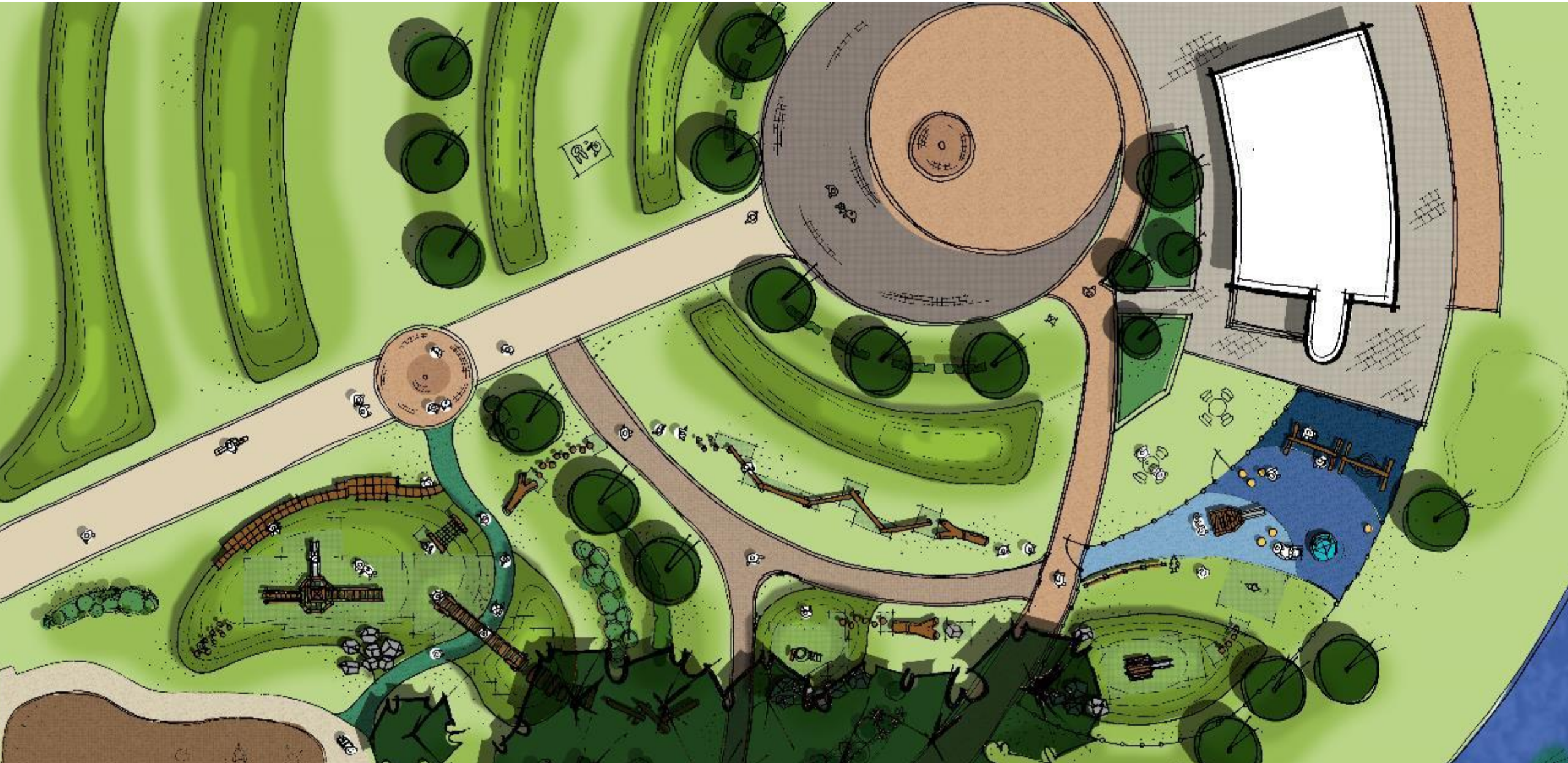
Tender Process Vs Collaborative Approach



Tender Process Vs Collaborative Approach



Case Study: Willen Lakes





Case Study: Willen Lakes

Investing in the landscape:

- Chose a partner to work with
- Separate budget for planting and landscaping works
- Strong drive to create meaningful landform that complimented the rest of the development
- Client Invested in the creation of mounding prior to installation







Case Study: Poole Park

Investing in the landscape and design:

- Chose a partner to work with
- Holistic approach adopted
- Focus on concept and story to create a narrative
- Bespoke & unique equipment, including colour palette
- A more organic and natural flow
- Encourages community engagement & therefore ownership



“There is a considerable body of evidence that shows green spaces in rural and urban areas are highly beneficial to health and well-being and also provide space for people to meet. The perception of beauty is an important factor for realising these benefits.”

Taken from Government's Living with Beauty report Jan 2020

If you want to deliver play differently, please contact me directly.



www.linkedin.com/in/michael-hoenigmann-7504121b/



07768307882



mhoenigmann@jupiterplay.co.uk



www.jupiterplay.co.uk