

**Paul Nelson
North Tyneside Council**

Carbon Management

5th February 2014



Content

- North Tyneside
- Carbon management & communications
- Performance
- Questions

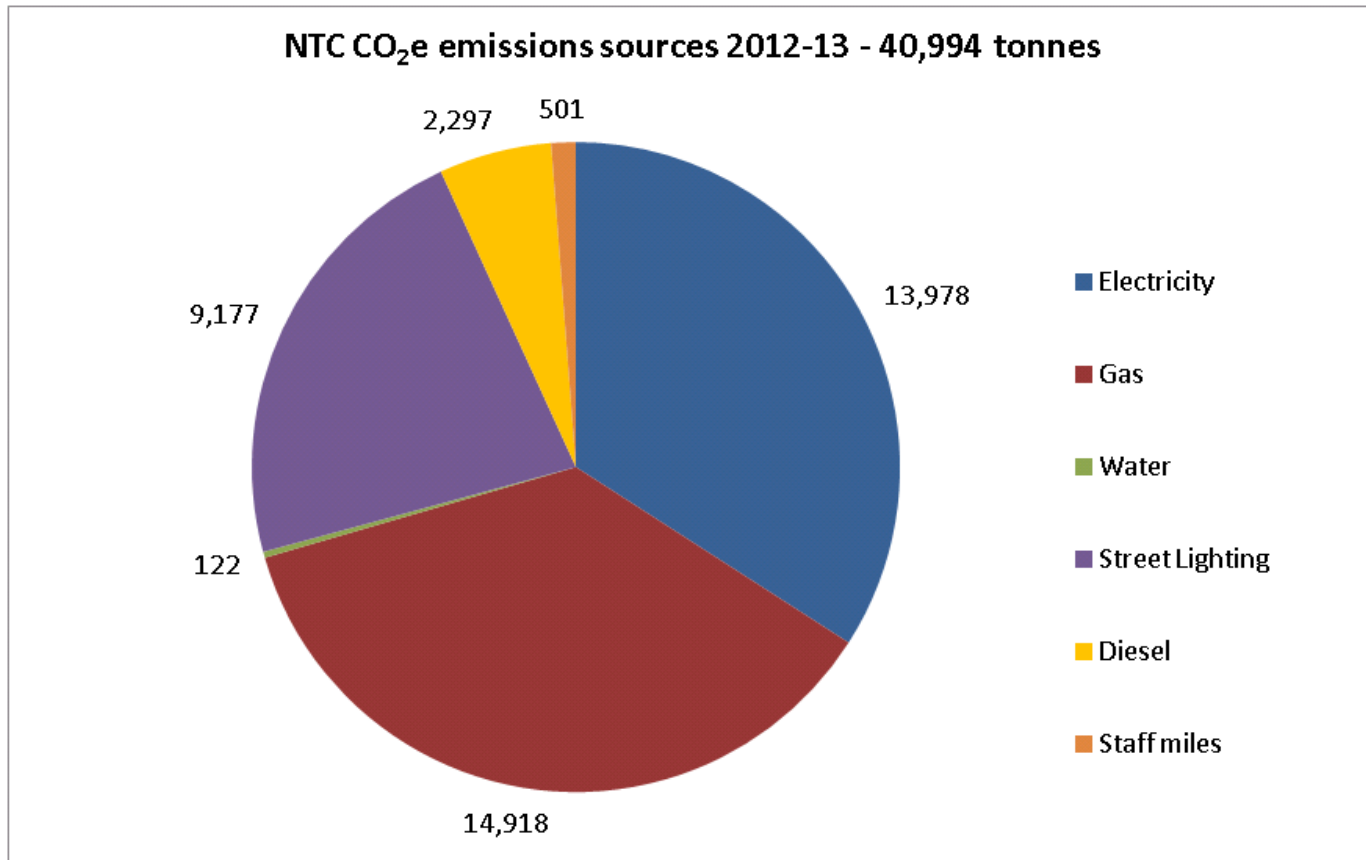


North Tyneside;

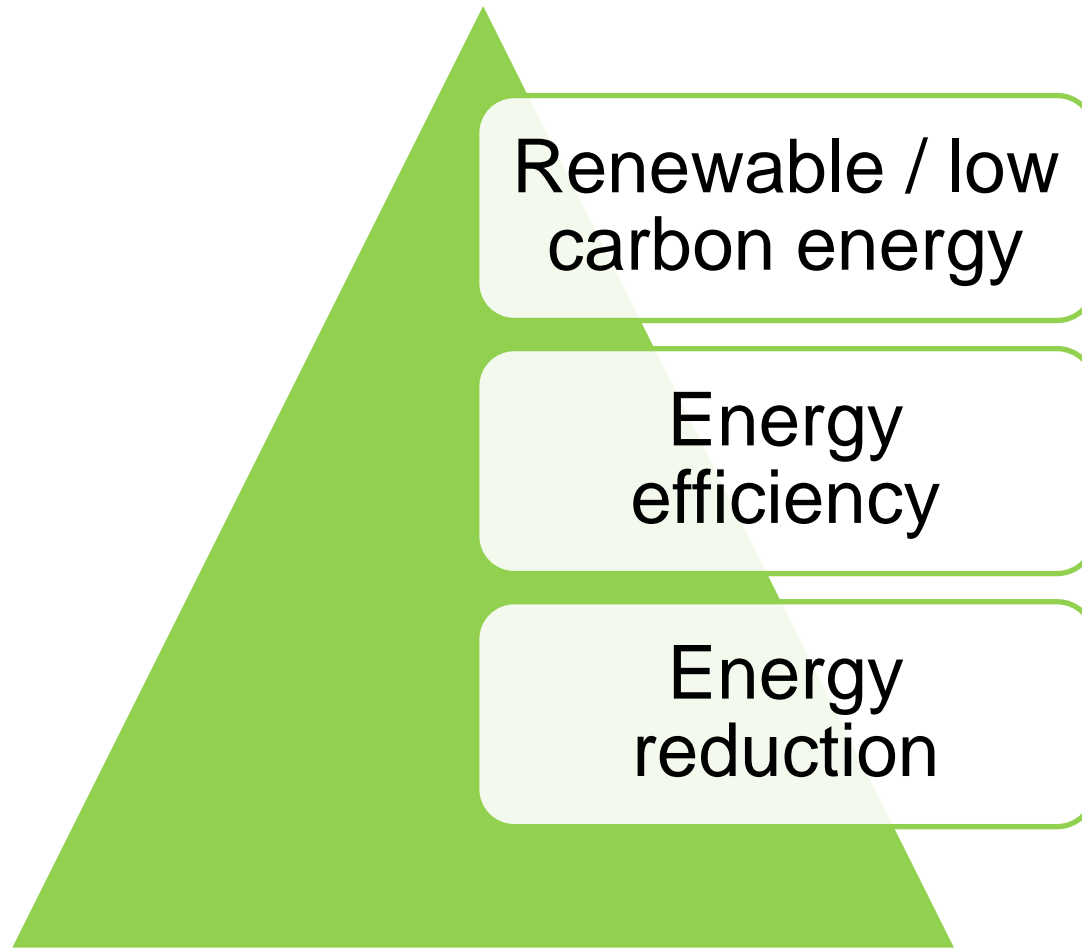
- 82 sq km – 20% greenbelt
- 200,800 population
- 95,000 households



NTC Carbon Footprint



Energy / carbon reduction hierarchy



Energy reduction

- Asset management
 - Agile working, building review
- Behaviour change and performance management
 - Carbon budgets, behaviour change / training, Watch Your Step
- Controls
 - BEMS, ICT, Street Lighting



Carbon Budgets

- Step change
 - CO₂ vs £
- Year 1
- Year 2
- Monthly performance management

Site Name	area (m2)	operating hours (PPA)	energy used compared to the end of the same period in 2012/13 (kWh)	April	February	Actual electricity (kWh)	Target electricity (kWh)	difference from MAISE year	May 12	difference from MAISE year	June 12	diff from year
Shankill East	14017	3564	less	-47%	225636	244800	-2%	232007				
Loughborough site	2	21036	less	9	3%	130062	-2%	136777	6%	18643		
Quayside Business College (FF)	1	12020	less	6	4%	18931	0%	126479	16%	13327		
M. Vaux	1	3404	less	10	3%	80273	-1%	79339	-1%	70261		
St. Mary's Roman Catholic High School	1	7779	less	6	-6%	6861	-6%	73204	-13%	63776		
Lakeside Centre	1	7029	less	6	-10%	53259	-10%	56033	-3%	59058		
Whiting Bay High School	4	10703	less	6	-4%	45984	-6%	45300	5%	45934		
Loughborough Community College	2	8592	less	7	-8%	45646	-8%	60598	-3%	47336		
Shankill West	1	4924	less	5	-5%	51237	-3%	54401	-2%	49171		
St. Thomas More P.C. V.A. Comprehensive	1	5784	less	9	-1%	47060	-4%	52893	-6%	60534		
Loughborough C. Col.	1	3793	less	5	7%	70933	114%	66397	64%	4340		
Clarendon Community College	4	3090	less	5	5%	42762	-5%	55605	-7%	44730		
St. Paul's	1	6396	less	9	-4%	41430	-10%	37741	-8%	32781		
John Joseph Convent High School	1	8036	less	5	-20%	20730	-10%	28139	-4%	28979		
George Stephenson Community High School	1	9306	less	5	2%	40644	8%	51794	19%	49554		
Northam Community Technology College	1	8473	less	6	1%	28446	28%	60609	34%	42981		
Seaton Burn Community College	2	8277	less	10	-9%	28973	-2%	27400	6%	29781		
Marsden High School	1	8472	less	11	-2%	22206	-1%	28951	-1%	28985		
White Swan Leisure	1	5280	less	13	-23%	28617	-6%	28162	-23%	16634		
Barton Green Primary School	1	1	less	5	-5%	28741	14%	31337	10%	24309		
Lambton East Methodist School	1	3844	less	5	4%	22887	-2%	20346	11%	24839		
Blakeside Centre	1	1433	less	18	-12%	21764	-1%	22020	-1%	18395		
Central Library	1	2863	less	9	-82%	3963	-80%	4225	-42%	4201		
Blakeside High School	1	4599	less	9	-8%	18173	-8%	22042	-17%	18325		
The Oldford Centre Longbenton	0	4032	less	9	10%	25633	3%	25433	3%	2413		
Victoria Gardens Middle School	1	4398	less	6	1%	12892	-4%	16002	19%	12105		
Wheatley Primary School (FF)	1	3860	less	6	-7%	1636	-23%	1948	17%	9064		
St. Mary's Roman Catholic	1	4361	less	7	0%	13725	-1%	16271	-1%	16141		
Marsden Bridge Middle School	1	4279	less	5	-8%	16556	-2%	19591	-28%	9746		
Crutcher Hall	0	508	less	13	-18%	5103	-24%	5363	-4%	5601		
Whiting Bay Club	0	484	less	0	-29%	3309	-41%	3719	-4%	341		
Southgate Court	0	1033	less	9	-10%	498	-2%	629	12%	6945		





**WATCH
YOUR
STEP**

- Who is it aimed at?



**WATCH
YOUR
MILES**



**WATCH
YOUR
ENERGY**

- What did we set out to do?



**WATCH
YOUR
HEALTH**



**WATCH
YOUR
WASTE**

- What did we achieve?



**WATCH
YOUR
PRINT**

Watch YOUR STEP

**Help us reduce
the council's
carbon footprint**

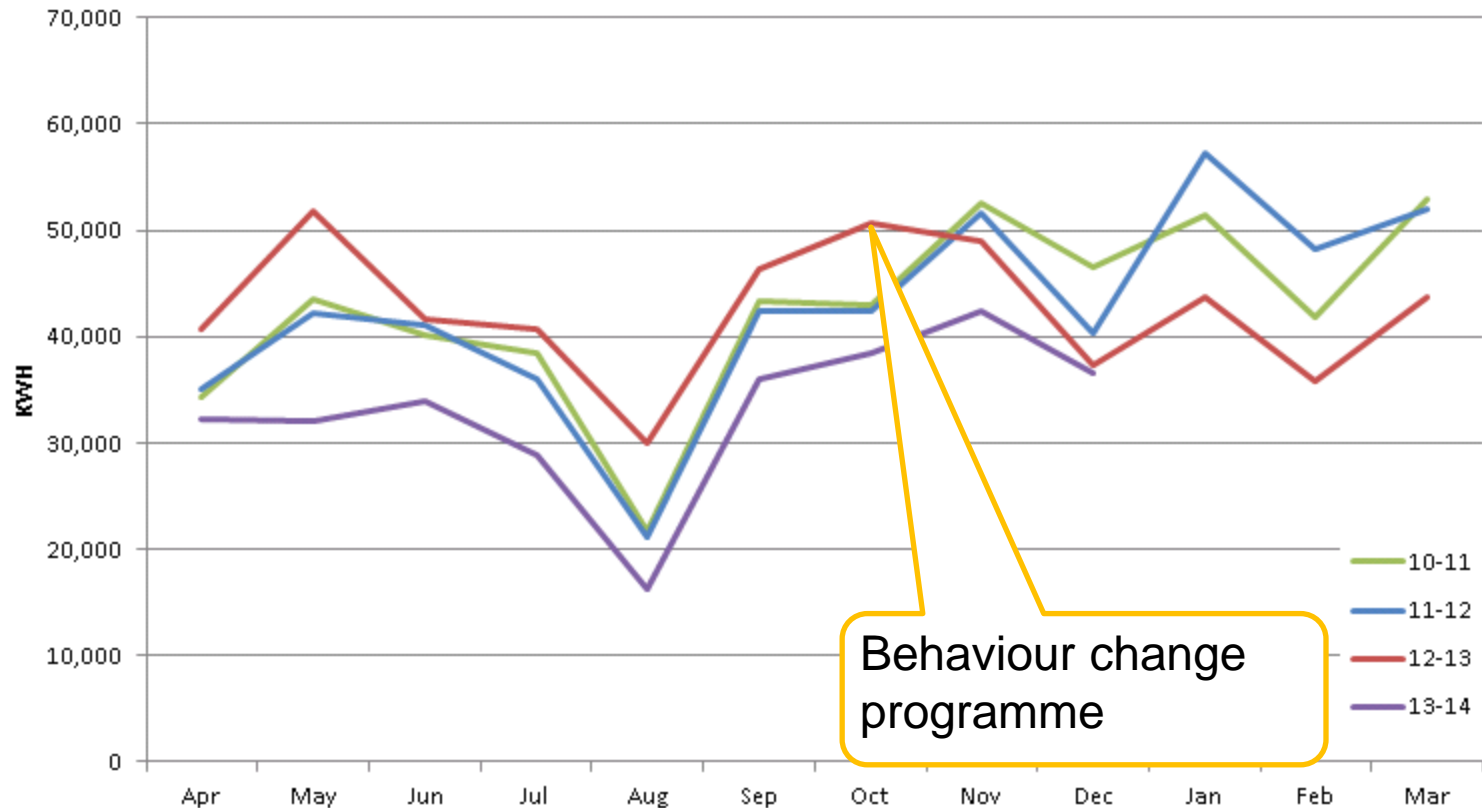
Join with your colleagues to:

- Watch your miles
- Watch your energy
- Watch your waste
- Watch your print
- Watch your health

Ask your
manager for
details



George Stephenson High School Elec. Consumption 2010-13



22% reduction against previous year



Watch Your Step

Carbon Reduction Awards 2013



widening
horizons



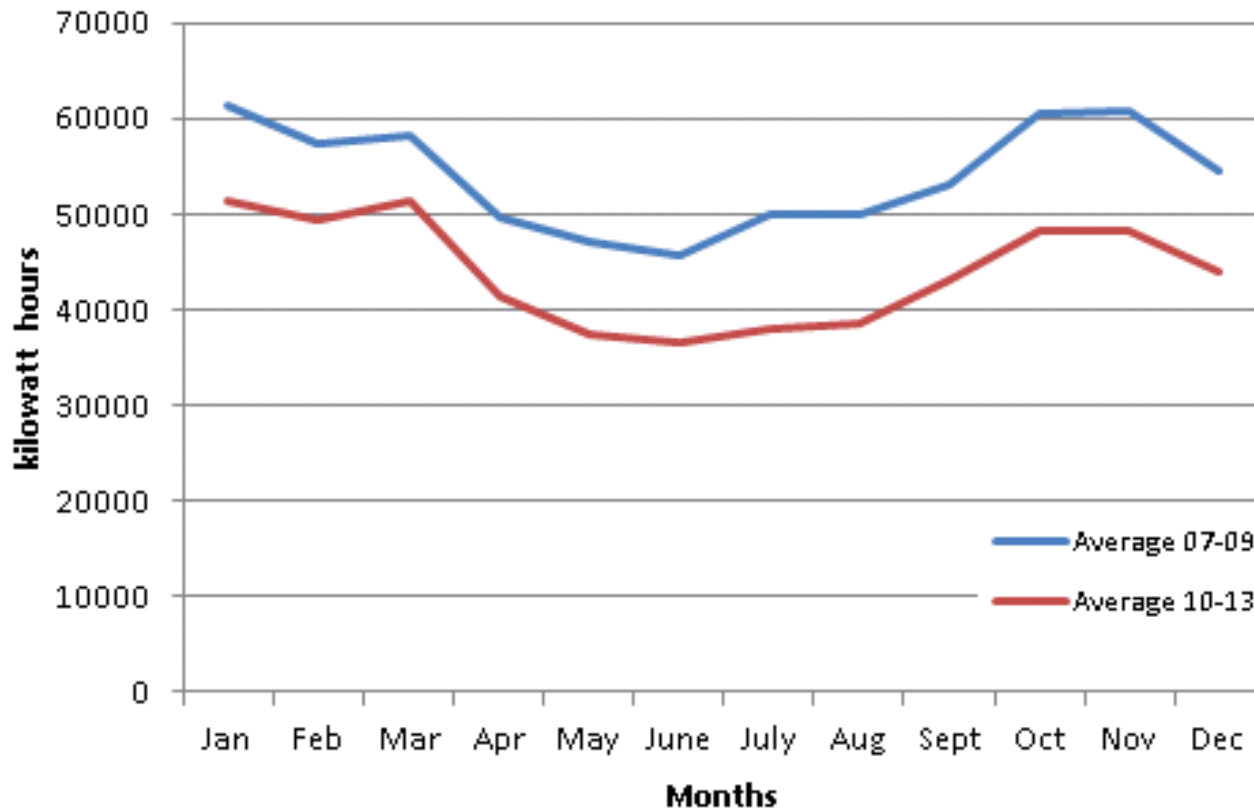
North Tyneside Council

Energy efficiency

- Planned maintenance budget
- Capita investment
- Street Lighting
- Schools modernisation investment programme
- Quality Homes for Older People



Parks Leisure Centre Electricity Consumption 2007-13



Sustained 19% electricity consumption reduction.

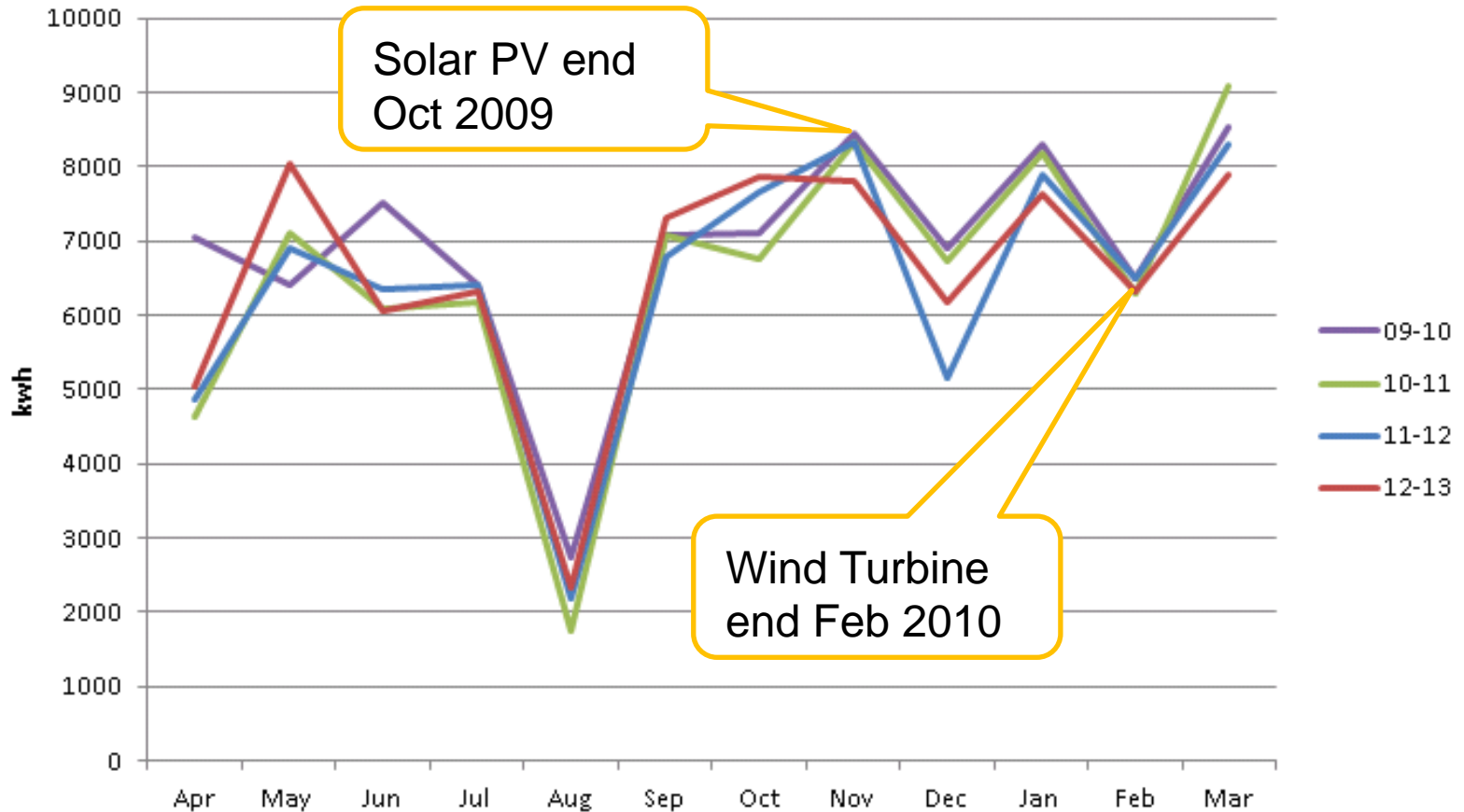


Renewable / low carbon energy

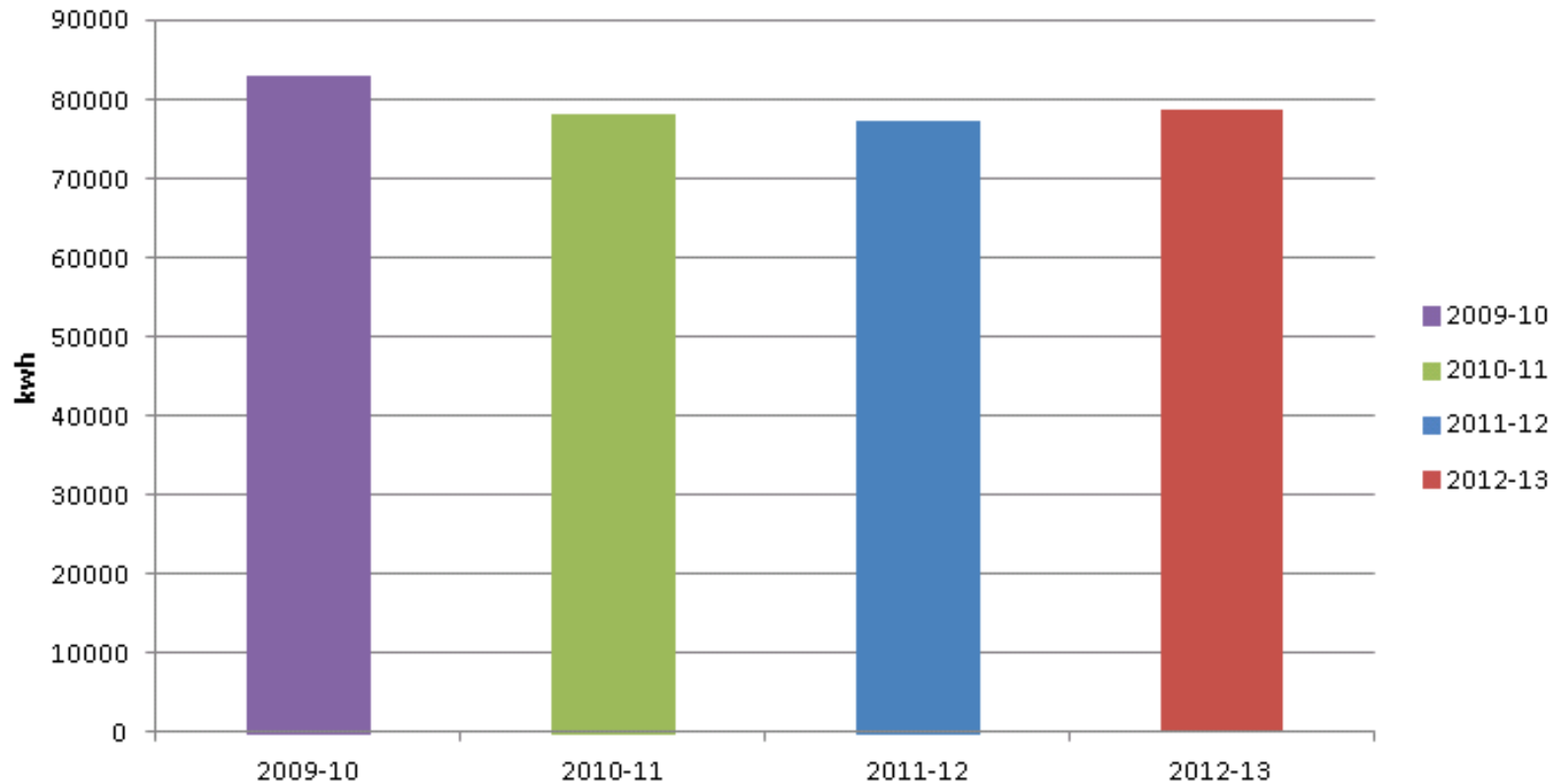
- Combined Heat and Power (CHP) in 3 swimming pools, 1 business case being developed
- Small number of Solar PV arrays on Schools



Amberley Electricity Consumption Analysis 2009-2013



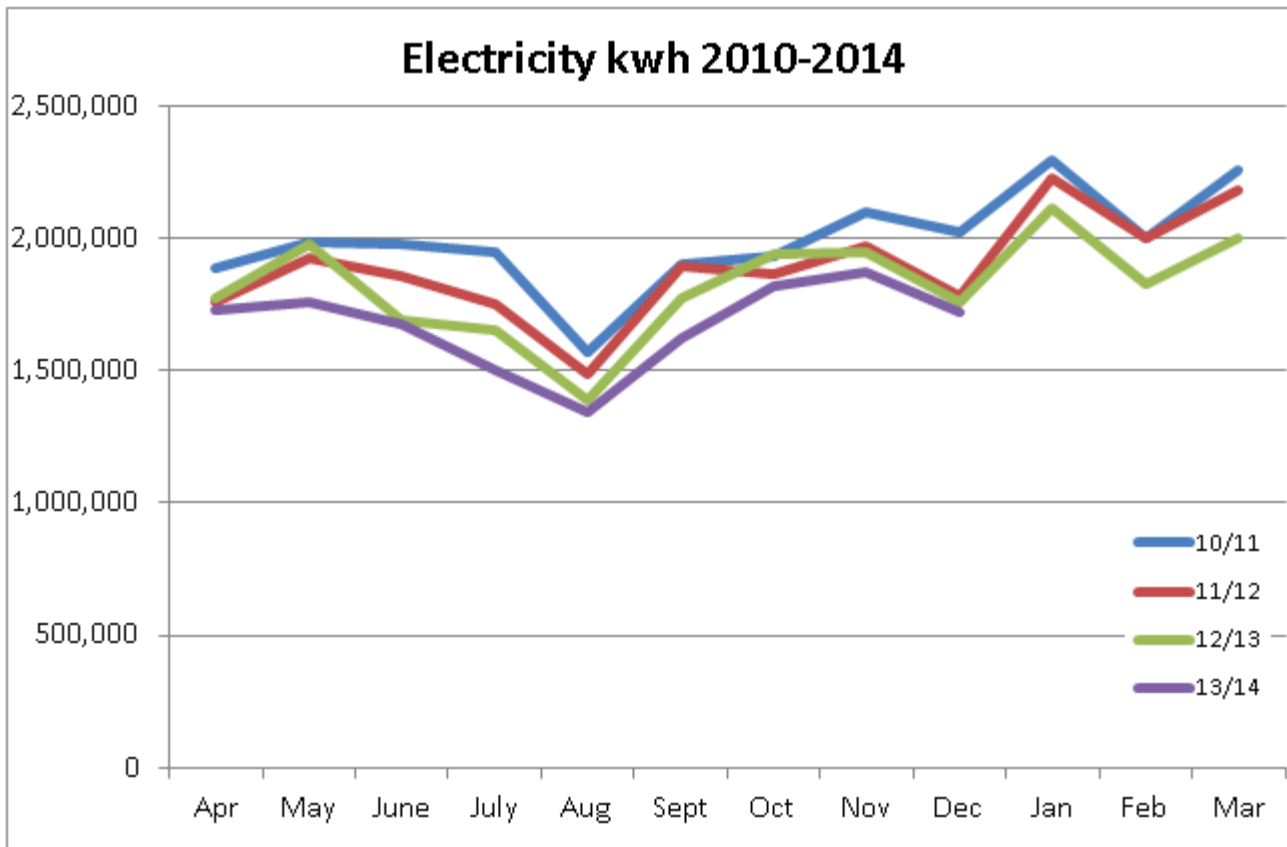
Amberley Electricity Consumption Analysis 2009-2013



Sustained 6% electricity consumption reduction.

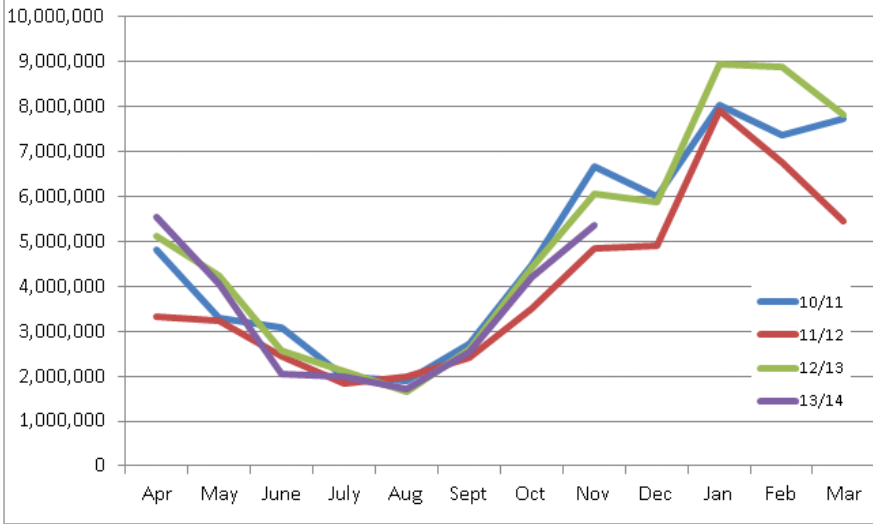


Performance

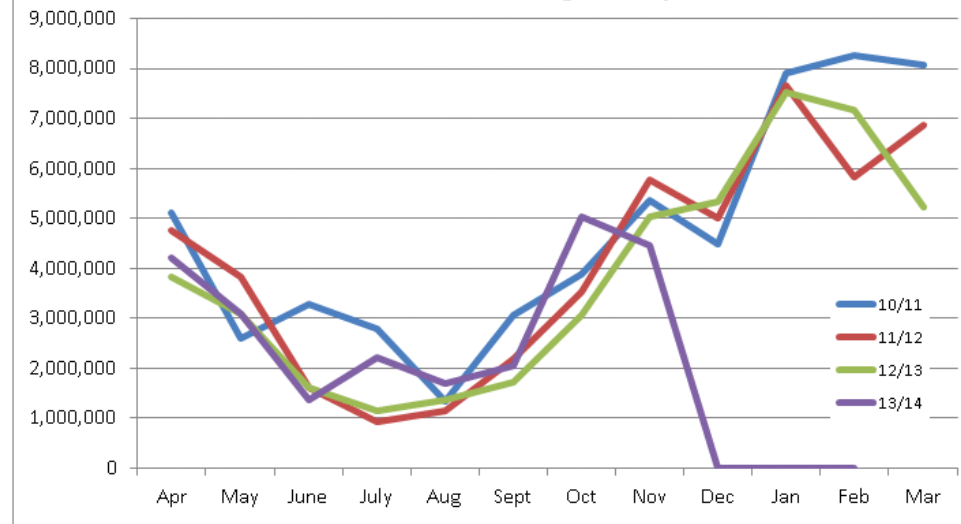


Performance

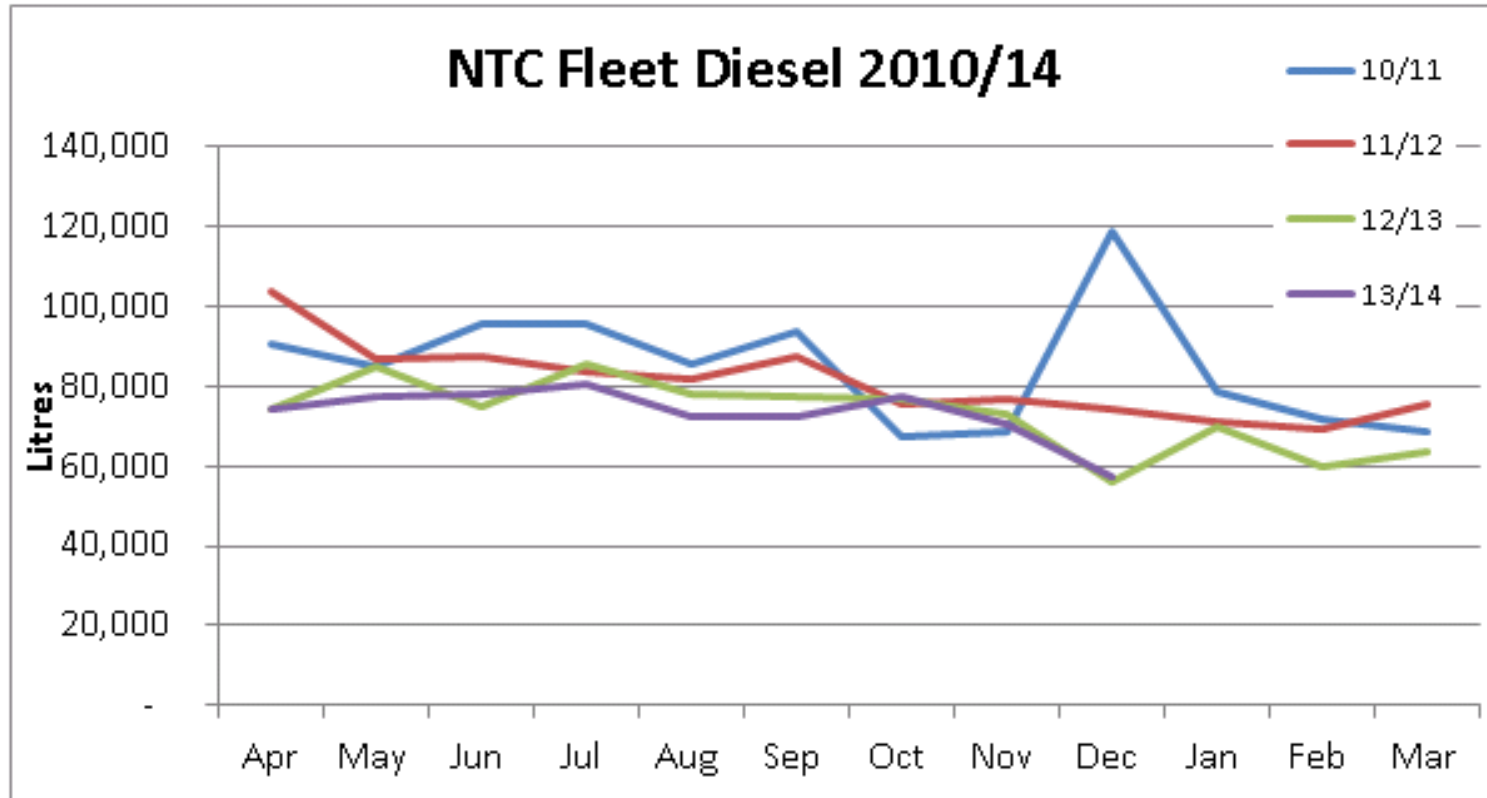
Gas kwh 2010-2014



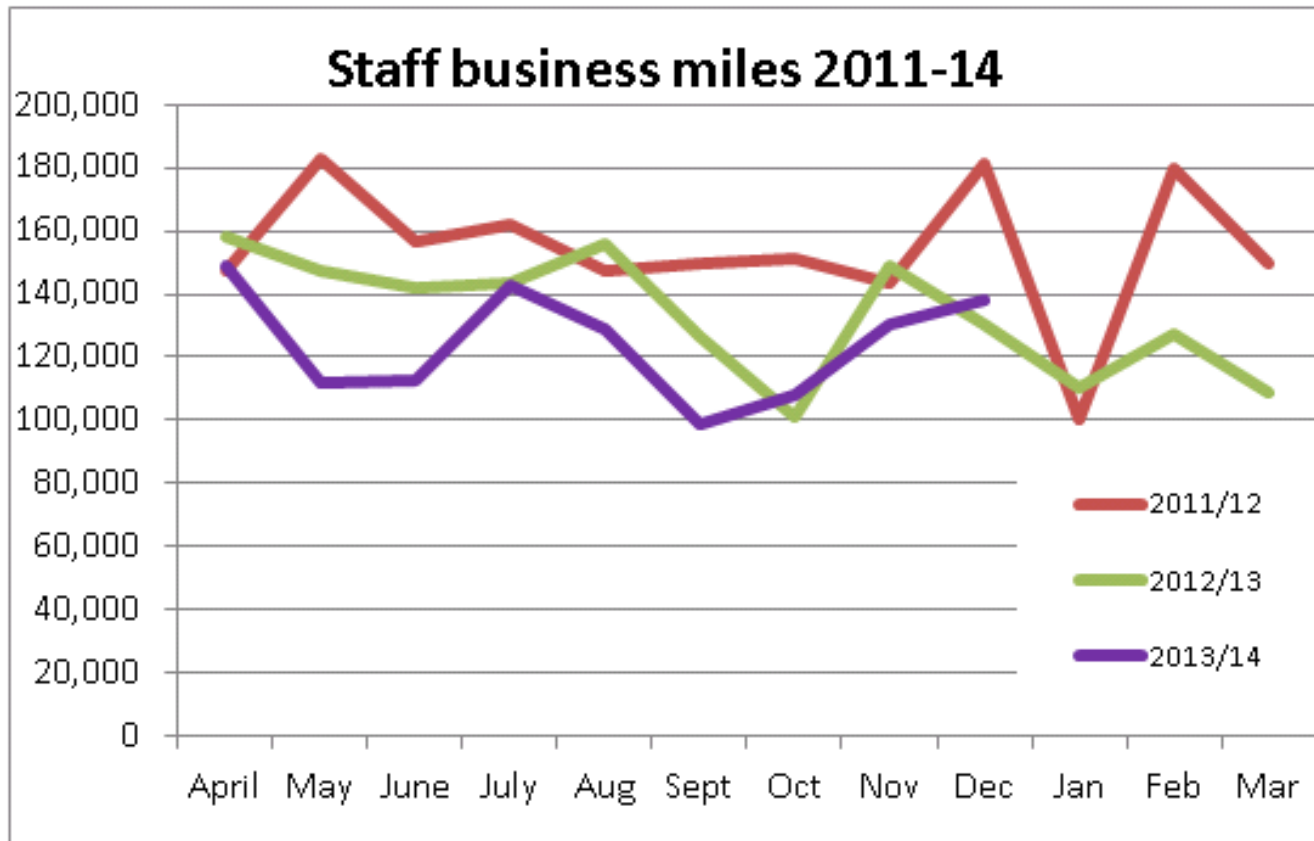
Gas kwh 2010-2014 - degree day data



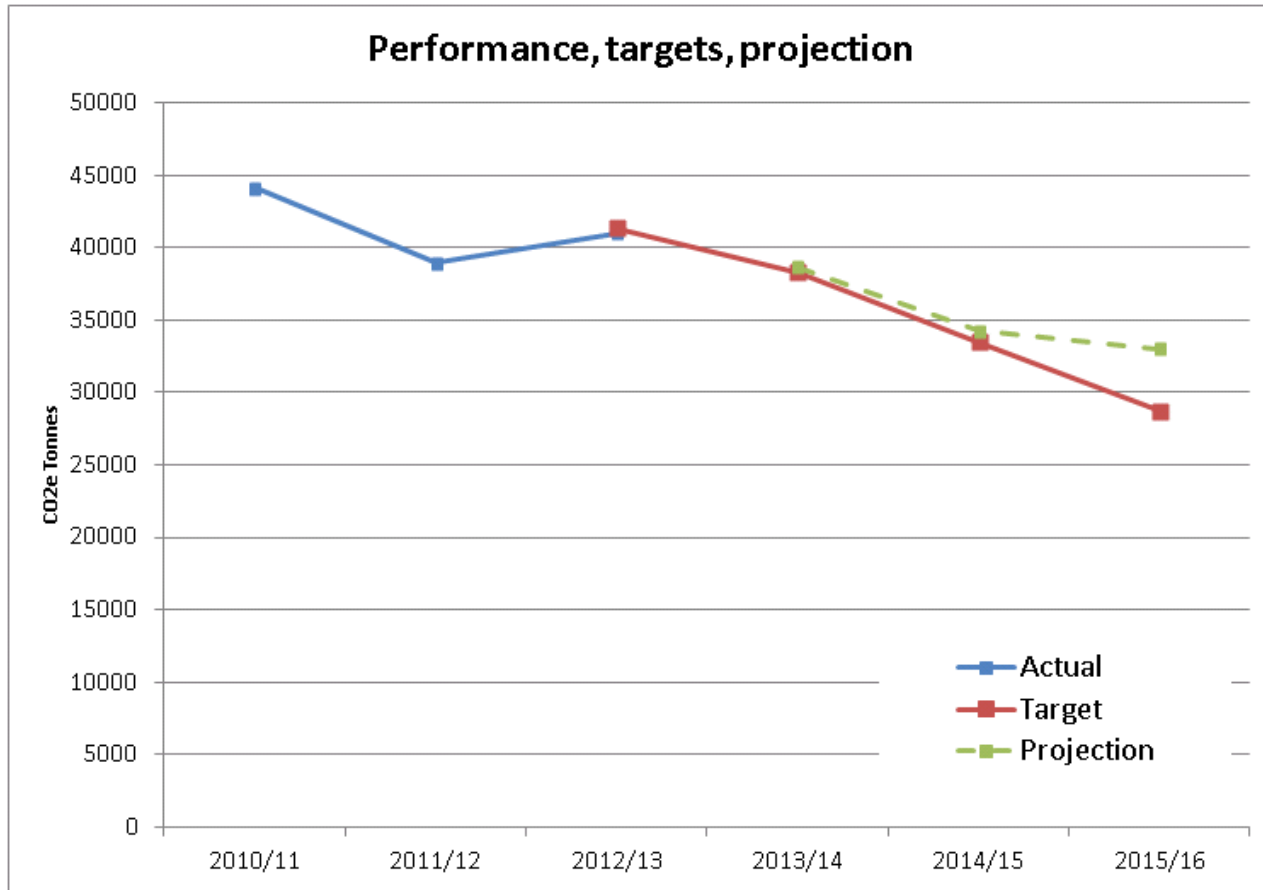
Performance



Performance



Performance



So, can we teach old dogs new tricks..?

Wii eeeeeeee!!!



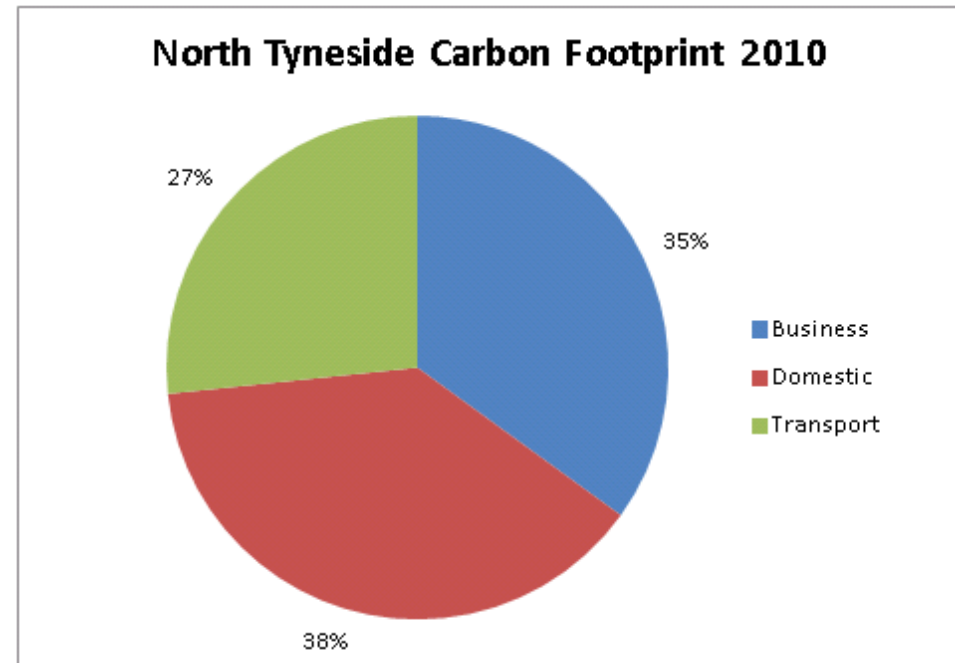
Thank You

Any Questions?



North Tyneside carbon footprint

- Measured and reported by DECC
- Domestic
- Industrial / Commercial
- Transport



North Tyneside Warm Zone

- 19,300 insulation measures
- 15,600 homes
- £4.5m value
- £2.3m fuel savings for residents
- 400k tonnes of CO₂ saved
- £4.1m additional benefits for residents



Energy Efficiency Partner Procurement

- Energy Company Obligation (ECO) funding
- New range of measures covered
- Up to £300k Council funding to 2014/15
- Procurement underway



Solar PV

- Largest social housing Solar PV project in England
- 1,500 homes
- £15m value
- 41k tonnes of CO₂ saved
- £4.7m saving to residents
- Free electricity to residents
- Zero investment by Council



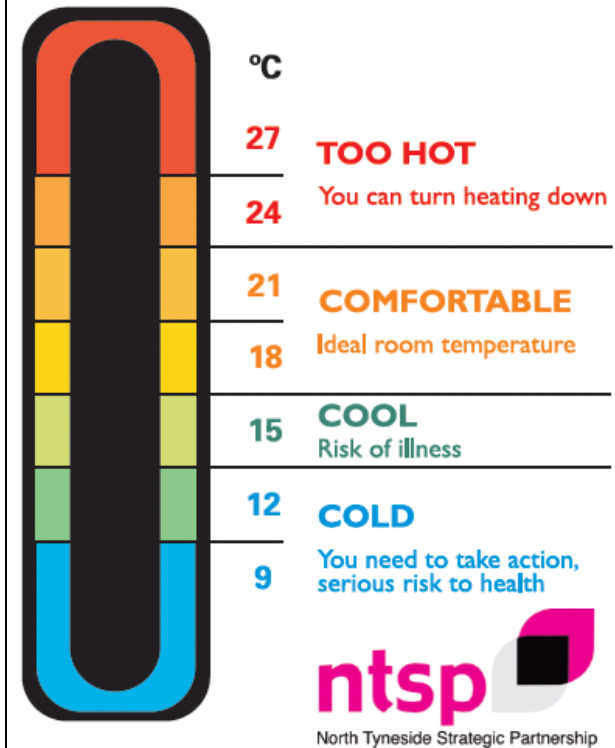
Working with the NTSP

- Green North Tyneside projects;
 - Carbon reduction awards
 - Room Thermometers
 - Supporting families

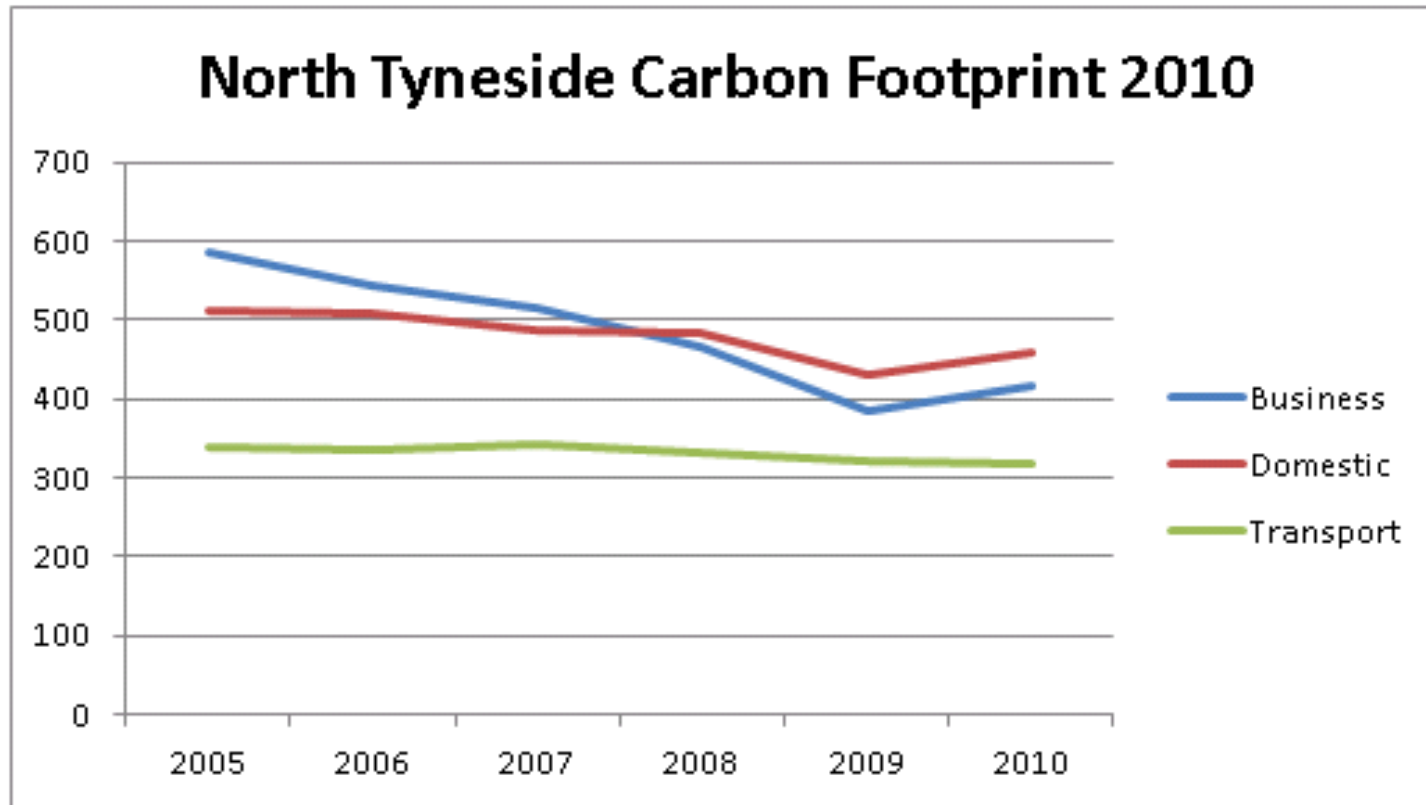


Helping North Tyneside residents to stay warm, healthy and protect our environment.

Use this thermometer to help monitor your room temperature. Avoid placing it in direct sunlight or close to other sources of heat.



Performance



Performance

