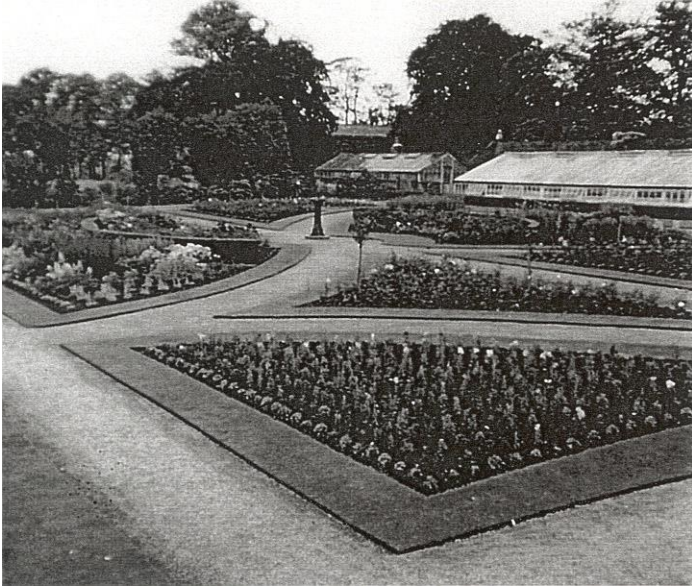


A wide-angle photograph of a large, open green field, likely a park or sports field. The field is in the foreground and middle ground, with a line of trees and a fence in the background. The sky is bright blue with scattered white clouds. The text "Pocket Parks Delivering Successful Bids" is overlaid in the center of the image in a large, bold, black font.

# **Pocket Parks Delivering Successful Bids**

# Introduction



- Pocket Park Challenges -
  - Timescales
  - Match funding
  - Voluntary sector applicant
  - Delivery timescales
  - Criteria



- Successful in securing 5 bids

# How did we do it ?



- Partnerships
- Friends of Groups
- Master plans
- Funding
- Community Consultations
- Evidence / Base line data
- Asset Management Plan
- Park Management Plans
- 18 Green Flag Parks
- Green Space Strategy
- Staff Resource



# Our Partners



- Internal Partners (e.g. Public Health)
- Town and Parish Councils
- Merseyside Police
- Merseyside Fire Service
- Knowsley Housing Trust
- CCG
- Cycling Projects
- Nature Connected
- Groundwork
- Landtrust
- Mersey Forest
- Forest Experience
- Friends Groups/Trusts and Residents
- SUSTRANS



# Mill Dam, Kirkby - Sketch Masterplan



## LEGEND

- ⊕ Proposed Community Building
  - ⊕ Proposed Cafe Terrace with view of the lake
  - ⊕ Proposed widened vehicular access
  - ⊕ Proposed recreation area and junior sports pitches
  - ⊕ Proposed widened footpath and circulation route
  - ⊕ Removal of existing woodland to open up use and views to recreation space
  - ⊕ Proposed 2m bitmac circular footpath/cycle route
  - ⊕ Future opportunity for refurbished toddlers play area adjacent to cafe terrace
  - ⊕ Existing natural play area
  - ⊕ Proposed no parking area for service and delivery vehicles
  - ⊕ Existing car park
  - ⊕ Existing woodland to be thinned by 50% to create glades and vistas
  - ⊕ Proposed tree planting
  - ⊕ Refurbished and locally repaired fishing pegs
  - ⊕ Removal of evergreen hedgerow to open up access and views
  - ⊕ Existing water play
  - ⊕ Existing Green Gym fitness equipment
  - ⊕ Existing pedestrian / cycle entrance point
  - ⊕ Existing bridge
  - ⊕ Housing development under construction
  - ⊕ Proposed informal grass mown path
  - ⊕ Proposed finger posts and interpretation
  - ⊕ Existing steps
- 
- - - Proposed 2m Bitmac Circular footpath/cycle route
  - - - Proposed informal grass mown path
  - Proposed finger posts and interpretation

# External Funding Secured



Building communities. Transforming lives.



CommunitySpaces







# Evidence / Baseline data





- Technical paper and series of 9 research papers developed covering key themes
- Local Neighbourhood stats
- Partner resources

# Long Term Planning




## Green Space Asset Management Plan

# AMP (2018 – 2043)

Describes the existing assets and establishes cyclical maintenance requirements and

PARKS & GARDENS
1.3

### Court Hey Park

**LOCATION :** Roby Road, Huyton

**WARD:** Roby

**AREA PARTNER SHIP BOARD:** South Huyton

**BRA:** 18

---

**DRAWINGS:** [1.3--CourtHey Park](#)

**PHOTOGRAPHS:** [1.3--CourtHey Park](#)

**DATASHEET LINK:** [1.0 Parks & Gardens](#)

---

**DATE OF LAST REVIEW :** May 2011

**REVIEWED BY :** J. D. Settle

**CONDITION SUMMARY :**  
1 - Performing as intended and operating efficiently

**SITE DESCRIPTION :**  
Court Hey Park is designated within the Knowsley Green Space Strategy as a Borough Park and holds Green Flag Award status. The Park is the home of the National Wildflower Centre and the Whitefield Cricket Club and benefits from a broad range of facilities including a car park, cafe, cricket pitch, bowling green and children's play space. The Park has a rich heritage throughout best illustrated in the Gladstone's Roots feature that interprets the former mansion house once present at the Park. The Park is supported by the Friends of Court Hey Park.

Current Quality Score (based on KMBC Green Space Strategy 2010-2014)

	20 07 08	20 09 10	20 10 12	20 13 14
Quality Score:	71	73	78	-

# Management Plans



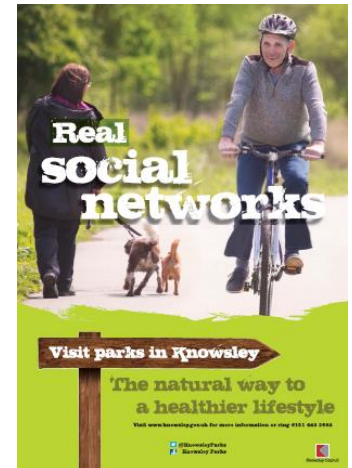
- Written by Stakeholder Groups
- Where are we now?
- Where do we want to get to?
- How will we get there?
- How will we know when we have arrived?

# Knowsley's Green Flag Parks

- St Chad's Park
- Millbrook Millennium Green
- KGV Playing Fields
- Court Hey Park
- Halewood Park
- Jubilee Park
- Webster Park
- McGoldrick Park
- Sawpit Park
- Henley Park
- Knowsley Cemetery
- Eaton Street Park
- The Pasture
- Little Wood
- Court Farm Woods
- Ten Acre Pits
- Acornfield Plantation
- Prescott/St Mary's Cemetery

# Knowsley's Green Space Strategy 2015-2020

The natural approach to a thriving borough



# Green Space Strategy

## Success and improvements to date

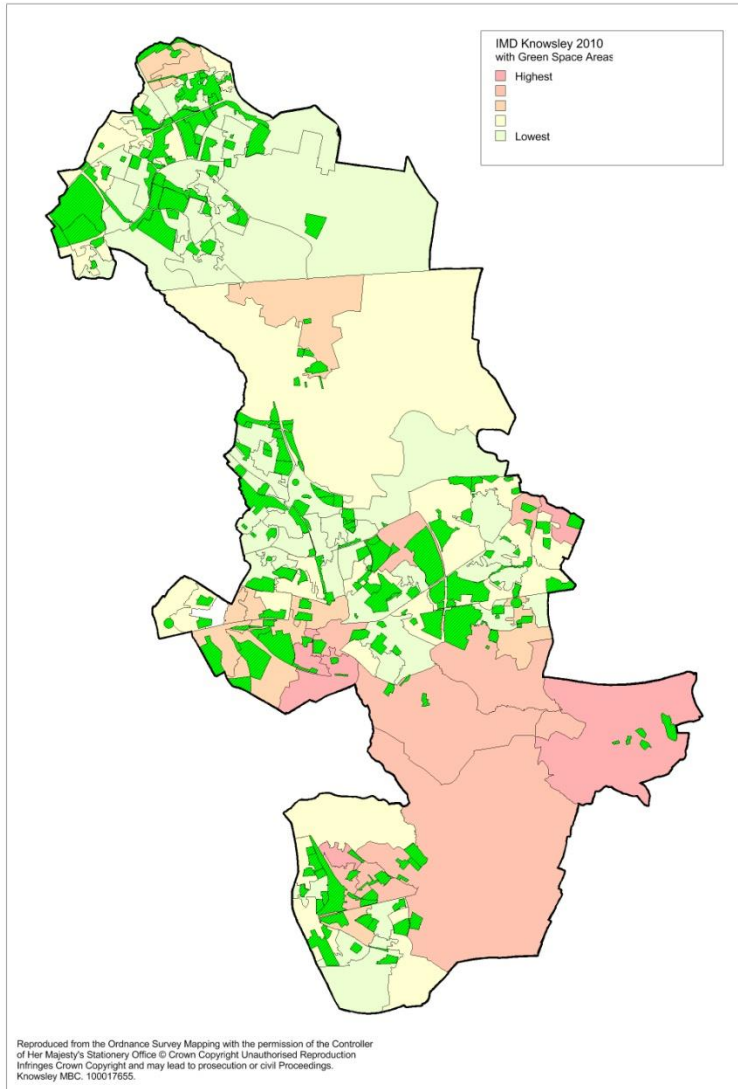
- A rise in public satisfaction with parks and open spaces to 82%
- An increase of 73% proactively supported green space community groups from 30 to 52
- Additional 27,000 volunteer hours at an economic value of £0.310m
- Over £9 million pounds of external investment secured for green space infrastructure improvements
- 8 million visits made to parks and green spaces each year
- 100% increase in participation in green space events and activities from 35,000 to over 70,000
- A increase in Green Flag Awards to 18
- A 27 point rise in the average quality score of parks typology from 49 and a fair rating to 67 a good rating

# Green Space Strategy Vision



*To maximise the value of Knowsley's publicly accessible green space assets to the benefit of the people, the economy and the environment*

# Green Space Functionality Principle



- To develop a wider performance framework that measures the value each green space provides to the strategic aims of the Council and its partners
- To develop and direct future resources to improve green spaces



# Functionality Principle Methodology

- a) Identification of outcomes and objectives of key strategies
- b) Production of a clear, transparent and robust evaluation matrix for measuring green space functionality for each of the strategic themes
- c) Assessment, collation and sorting of available datasets e.g. Crime, education, health, social deprivation
- d) Overlaying of datasets and functionality scores in each locality via green space layer mapping
- e) Prioritising a range of green space site improvements and/or provision of supported services based upon improving the data sets overall results for each neighbourhood

# Functionality Principle Methodology

**Table 1: Example of Functionality Scores for Mill Dam Park**

Site	Health	Social Value	Economic Growth	Education	Crime	Biodiversity	Climate Change	Cumulative Current Score	Maximum Potential Score	Risk Score
Mill Dam Park (Park Ward)	2	0	0	0	1	2	1	6	19	-7 (▼13)

Tiered approach to delivery:

- Objective 1 – Retain existing functionality
- Objective 2 – Improve functionality
- Objective 3 – Transformative projects

# Functionality Principle Methodology

The ten Green Space sites at greatest risk of losing existing functionality

Site	Ward	Current functionality score	Potential score (with investment)	Potential reduction in functionality score
Court Hey Park	Roby	18	20	1 (▼ 17 drop)
Stadt Moers (Tushingham)	Whiston North	14	18	-2 (▼ 16 drop)
Halewood Park	Halewood North and West	15	20	0 (▼ 15 drop)
Little Wood	Stockbridge	10	14	-5 (▼ 15 drop)
Northwood Forest Hills	Northwood	9	14	-5 (▼ 14 drop)
Court Farm	Halewood North	9	12	-5 (▼ 14 drop)
Mill Dam Park	Park	6	19	-7 (▼ 13 drop)
Jubilee Park	Page Moss	7	23	-5 (▼ 12 drop)
Acornfield Plantation	Kirkby Central	8	14	-3 (▼ 11 drop)
New Hutte Wood	Halewood West	6	11	-5 (▼ 11 drop)