

APSE Parks and Greenspaces Advisory Group
Thursday 23 February 2023

Post Industrial Wasteland to Popular Public Greenspaces

AKA - Kilvey Hill and the
Lower Swansea Valley (LSV)

Sean Hathaway
Environment Officer
Swansea Council

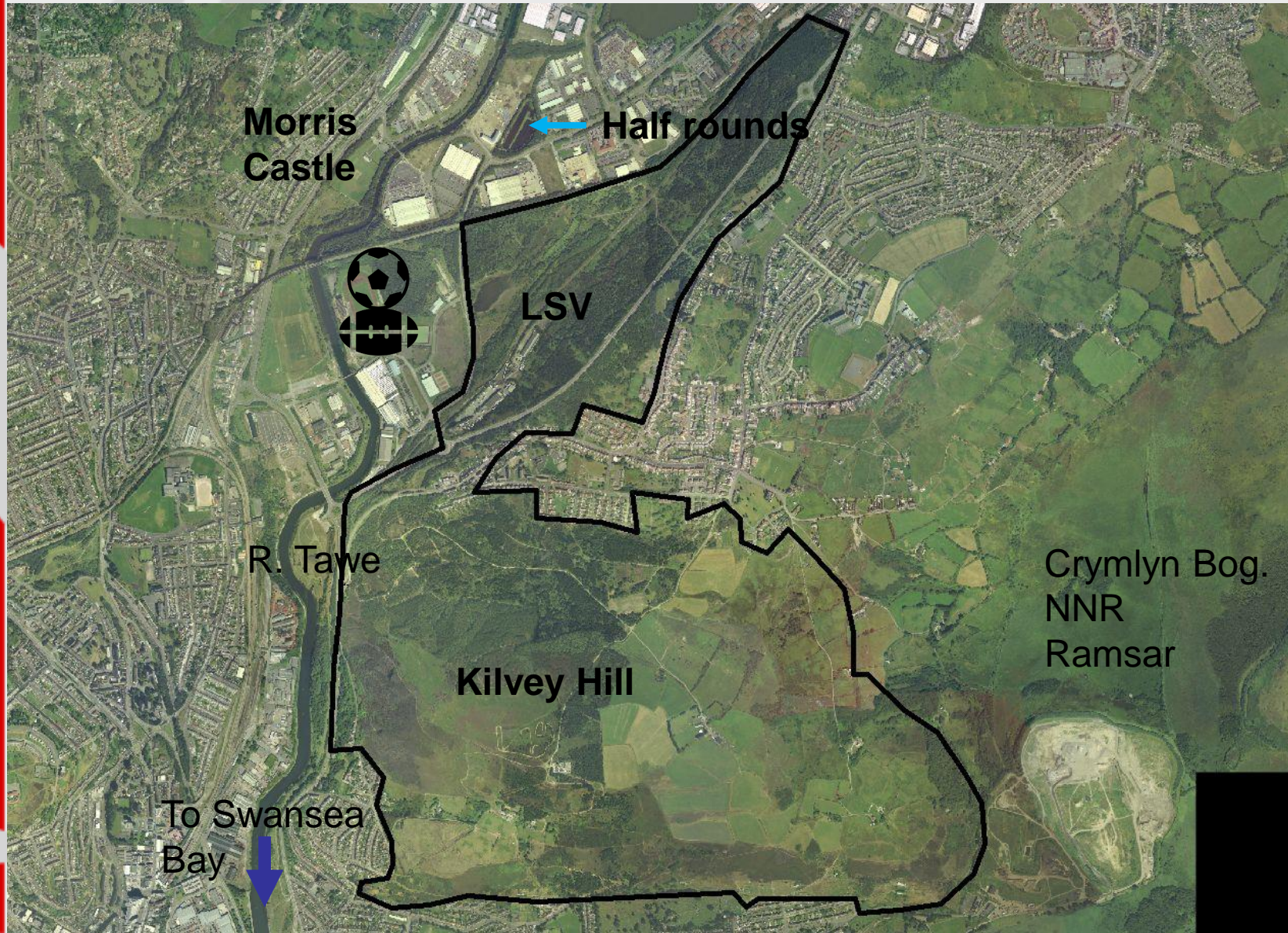
The APSE logo consists of a black square with a purple oval shape on the left side. The word "apse" is written in white lowercase letters across the purple oval and the black square.

apse





Kilvey Hill and the Lower Swansea Valley



Oak Woodland

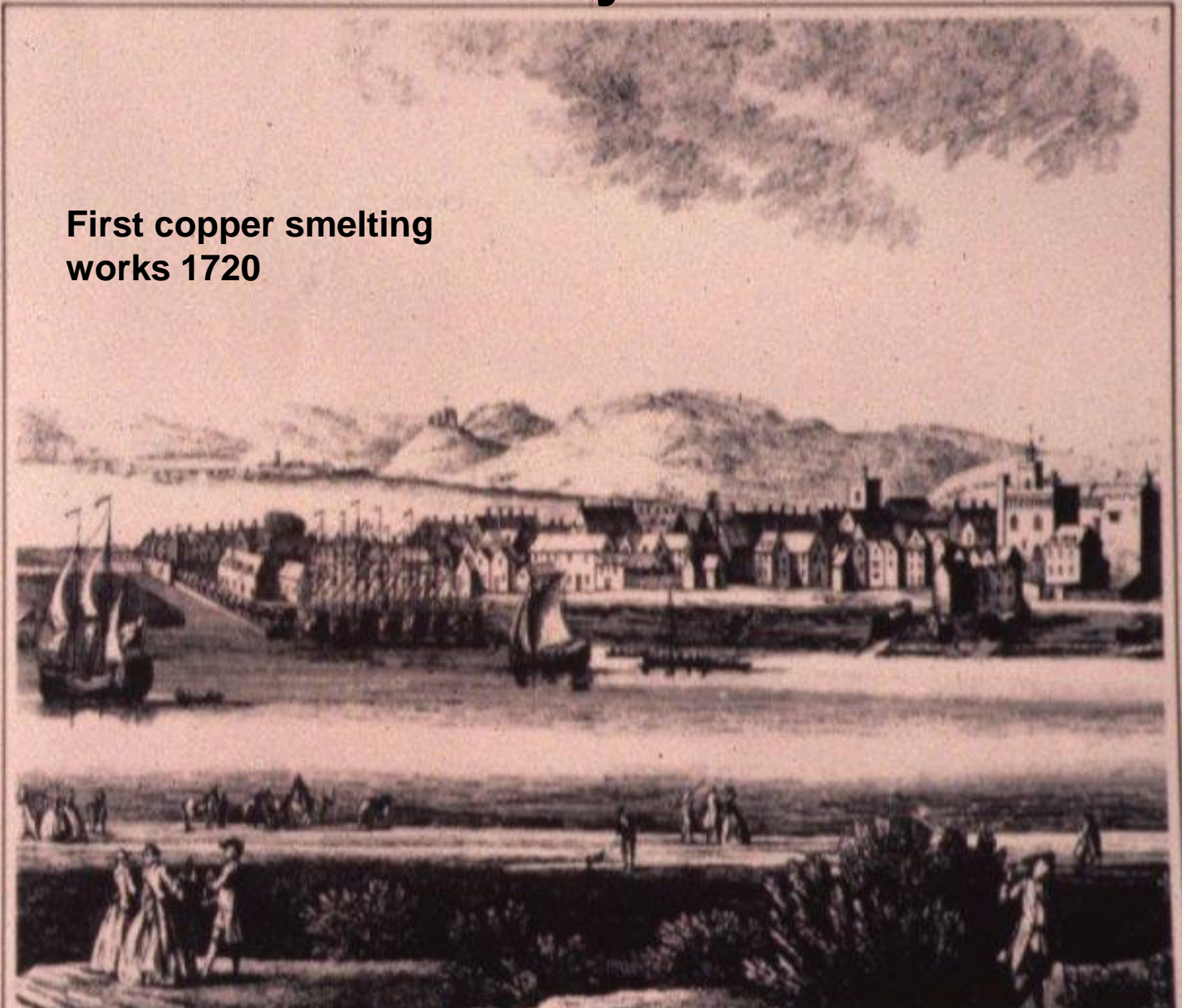


Sand Dunes in bay



Early 1700's

First copper smelting works 1720



The Industrial Revolution 1791



Coal
Water
River
Docks
Raw materials

Forest Copper Works 1791.

The Industrial Revolution - 1880



The Industrial Revolution

Copper

4 tons of coal to smelt 1 ton of copper ore

Cheaper to bring ore to the coal from Cornwall

19th century smelted 90% of worlds copper

Tin (+ lead, silver, cobalt, gold, spelter)

19th century 'a world centre for production'

Gerstenhofer's Process, capture sulphuric acid

1849

10k ships p/a

716,000 tons of cargo

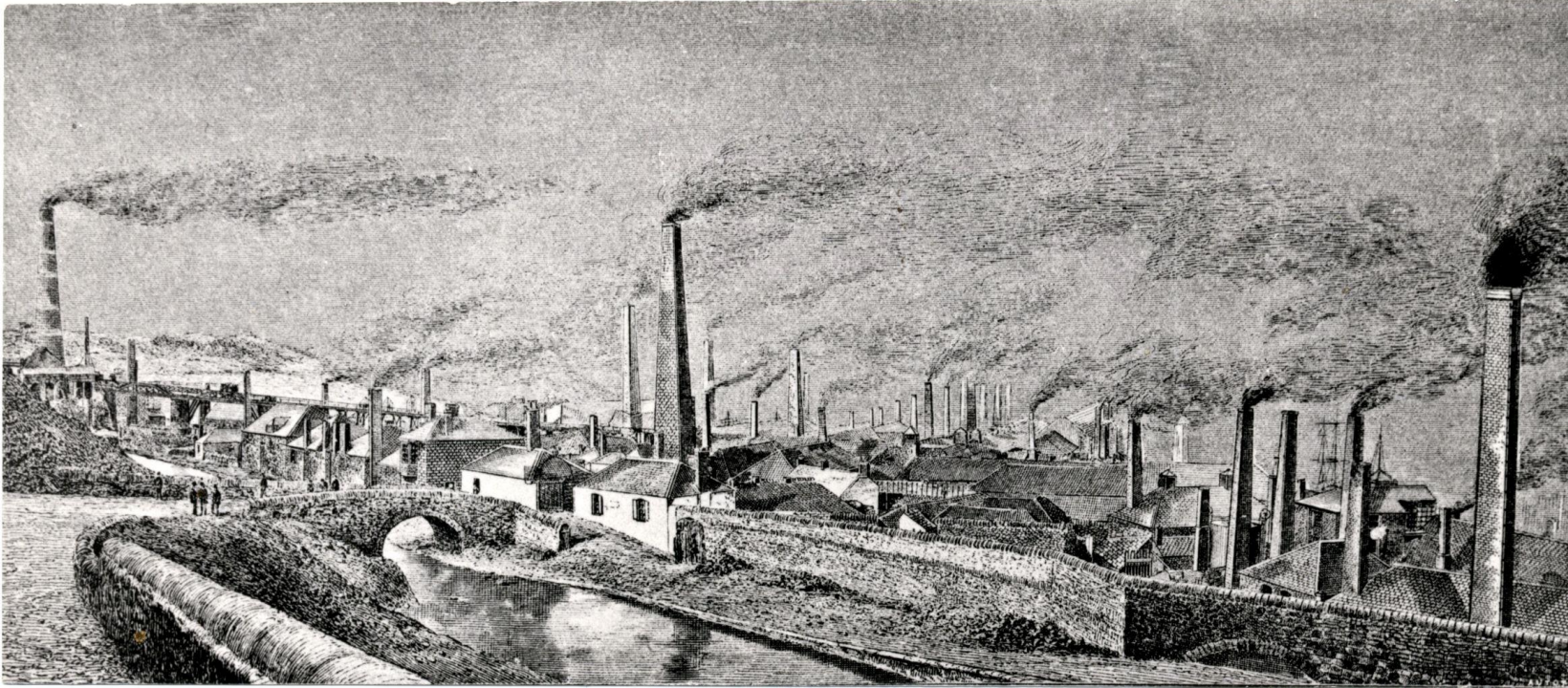
Hundreds of chimneys, only a few remain



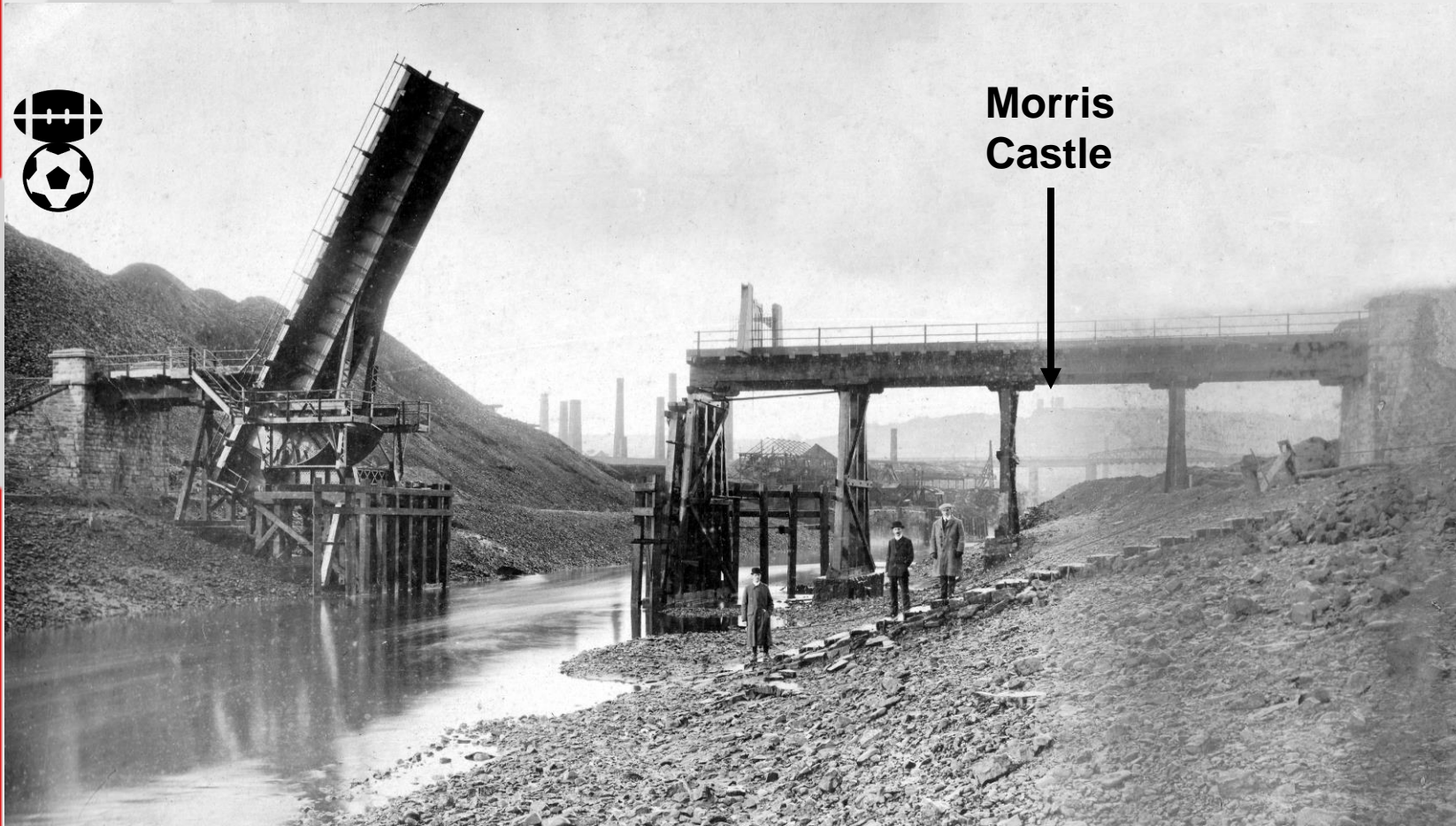
The Industrial Revolution



The Industrial Revolution



The Industrial Revolution



Making Tin Plate



Post Industrial Revolution

1928 – 1931 exported 0.5 mil tons of tinplate

Pre WW2 = 1.24 mil tons of steel ingots

WW2 – docks still important

By 1961 over 60% of the area was derelict
7 mil tons of waste and slag heaps
1000 acres/405 ha



Post Industrial Revolution

Definition mid 1960's from D of Env'

“land so damaged by industrial or other development that it is impossible for beneficial use without treatment”

Pollution-ground, water, wind blown

Erosion

Health

Plants/ecology

Lack of development/investment

Engineering problems

Costs



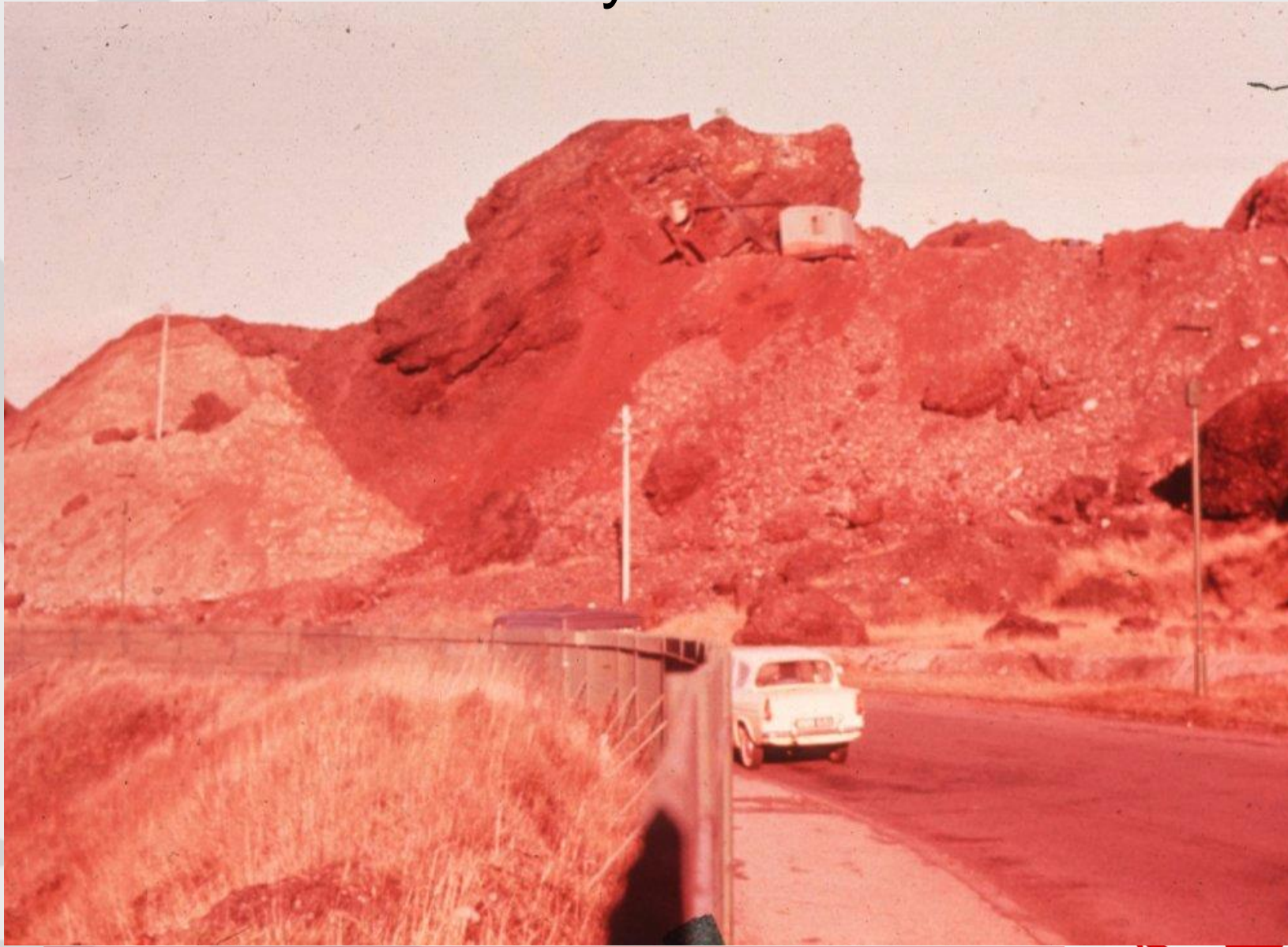
Post Industrial Revolution *Moonscape*



Copper Waste



Pentrechwyth/White Rock



R Tawe



Contamination



Contamination



Half rounds

The Lower Swansea Valley Project

1966 Sec State for Wales 'Derelict Land Unit'

Swansea University

Nuffield Foundation

Swansea Town Council

Welsh Office

Dept of Scientific and Industrial Research

12 acre Hafod copper tip (largest in Wales)
cleared in 1973 @ £163K





South Wales Evening Post

LATE TOWN FINAL

MOVING TO THE BROADWAY
D. E. POWELL

First practical step to restore devastated acres on Swansea's approach

TACKLING THE EYESORE AT

LANDORE

New method for attacking problem

Part could become a 'helidrome'

SWANSEA, WALES, (Special Correspondent)—A new method for attacking the eyesore of the Landore area, which has been devastated by the effects of the Swansea Bay development, was announced today.

By EVENING POST REPORTER

FIRST PRACTICAL STEP TO RESTORING TO USE THE DEVASTATED ACRES ON THE EASTERN APPROACH TO SWANSEA WAS ANNOUNCED TODAY.

An inquiry is to be conducted by the University College of Swansea into the possibility of the Landore-Llanmichael area, the desolate appearance of which offends the eye, particularly at a time when new buildings are obscuring agricultural land.

Mr. R. J. Wilson, a Swansea man, who has been appointed general secretary of Swansea T.M.C.A., has been appointed director of the inquiry, which is expected to take four years and is being financed at an estimated cost of about £20,000 by the Swansea Foundation and other bodies including the Government, the Swansea Borough Council and the University College.

BAR COLLAPSES - DIES

SWANSEA, WALES, (Special Correspondent)—A bar collapsed at Swansea today, killing a man and injuring several others.

'First inquiry of its complexity and size in the world'

By EVENING POST REPORTER

AT THE PRESS CONFERENCE held to announce the start of the inquiry today, the devastation of the area was described as 'one of the worst in the world'.



LATE NEWS

SWANSEA, WALES, (Special Correspondent)—A man was killed and several others injured today when a bar collapsed at Swansea.

MASKED GANG SNATCH £10,000 IN

LONDON POWER PLANT PAY RAID

Police guards cashed

A masked gang of five men snatched £10,000 from a power plant in London today.

SHORT SERVICE FOR NORWAY CRASH DEAD

A short service will be held for a Norwegian man who died in a plane crash.



The Lower Swansea Valley Project



The Lower Swansea Valley Project 1968



Kilvey Hill

**450,000 trees;
Larch
Lodgepole and
Corsican pine**

Hydro seeding

Planting





The Lower Swansea Valley Project

1974 – 5 park urban renaissance project

Enterprise Park

Leisure Park

Riverside Park

City Park-shopping

Maritime Park-marina

2022 Swansea Arena



Development Works



Development Works



Habitats

Wetlands/ponds/bogs/mire

Heath/meadows

Broadleaved natural regeneration

Calaminarian grassland



Recreation-MTB, sculpture



Recreation-fishing, walking, picnic

Half Rounds



Information

Kilvey Community Woodland is a place where you can enjoy the countryside within sight of the city. Discover the hill, take in spectacular views, and watch the wildlife of the woodland and heathland.

You are welcome to walk on the City and County of Swansea's land. Please be considerate to other users and keep off private land.

Kilvey Community Woodland is jointly managed by Natural Resources Wales and the City and County of Swansea's Nature Conservation team, along with the support and involvement of the Kilvey Community Woodland Volunteers group.

For Further Information contact the Nature Conservation Team on 01792 433745.

Mae Coedwig Cymuned Cilfai yn lle i chi fwyhau cefn gald ym nghyffiniau'r ddinas. Dewch i dalarganfod y bryn, edmygwch golwgryddau anghywil, a gwyllo bywyd gwylt y goedwig a'r moestr.

Mae croeso i chi gerdded ar dir Swana a Sir Abertawe. Rydych chi'n ystyried a chadwch droed a di-erffwl.

Mae'r coedwig Cymuned Cilfai ar y ryd gan gyfarwdd Naturiol Cymru a Tîm Cadwraeth Natur Dinas a Sir Abertawe, ynghyd â chelwraigwyrdd a'u gwybodaeth a'u gwrthdaroeddwr Coedwig Cymuned Cilfai.

I gael mwy o wybodaeth, rwydych chi'n Tîm Cadwraeth Natur ar 01792 433745.

Kilvey Hill

Coedwig Cymuned Cilfai

Green Snake
Cwmwl y Cwmwl

The Green War
Y Cwmwl y Cwmwl

Field Pond

Swallow
Cwmwl y Cwmwl

Redstart
Cwmwl y Cwmwl

Green Woodpecker
Cwmwl y Cwmwl

Kestrel
Cwmwl y Cwmwl

Robin
Cwmwl y Cwmwl

Skylark
Cwmwl y Cwmwl

Pen
Cwmwl y Cwmwl

Swansea City Centre

Swansea Bay Seafront

Logos: Natural Resources Wales, Swansea City Council, Cymuned Cilfai, European Union.

Gateway improvements



Issues

- Scrub encroachment
- Access control/management
- Litter
- Wild fire
- Habitat management/INNS



Long term

- Manage habitats
- Wildlife corridor-R Tawe, RAMSAR
- Recreation-walking, archaeology, lunch break, Time Team
- Education
- Penderyn
- SSSI-Six Pit, Swansea Vale, White Rock
rare mosses, spring sandwort



Engine House





THE HAFOD-MORFA COPPERWORKS
GWAITH COPR HAFOD MORFA

THE MUSGRAVE ENGINE ROOM

The Musgrave Engine Room is a fine example of Victorian industrial architecture. It was built in 1860 and was used for the production of copper. The room contains a large steam engine, which was used to power the machinery in the copperworks. The engine is a horizontal steam engine, and it is one of the largest in the world. It was built by John Musgrave & Sons Ltd, and it is a masterpiece of engineering. The engine is still in good condition, and it is a great example of the industrial revolution.

PEREGRINE MUSGRAVE

Peregrine Musgrave was a prominent figure in the copper industry. He was the founder of John Musgrave & Sons Ltd, and he was instrumental in the development of the copperworks at Hafod Morfa. He was a visionary, and he saw the potential of the copper industry in the region. He invested heavily in the copperworks, and he built the Musgrave Engine Room as a testament to his vision. The engine room is a reminder of his legacy, and it is a great example of the industrial revolution.



Partners

- Local users-Friends, Kilvey Volunteers
 - Welsh Gov (WDA)
 - Forestry Commission/Enterprise
 - Valleys Forest Initiative (me 1993)
 - NRW (CCW)
 - Fire service
 - Local councillors
 - Schools, university
 - Fishing club
 - NGO's - Buglife
-

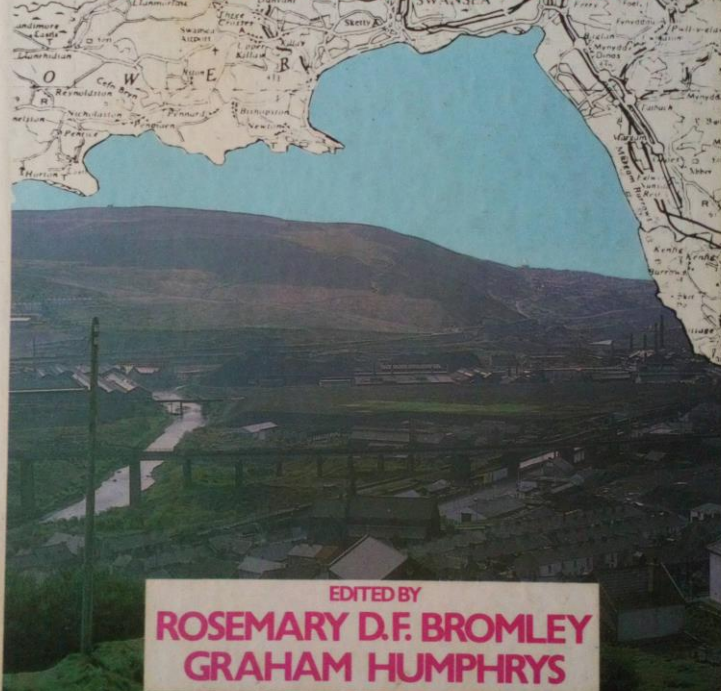


Skyline



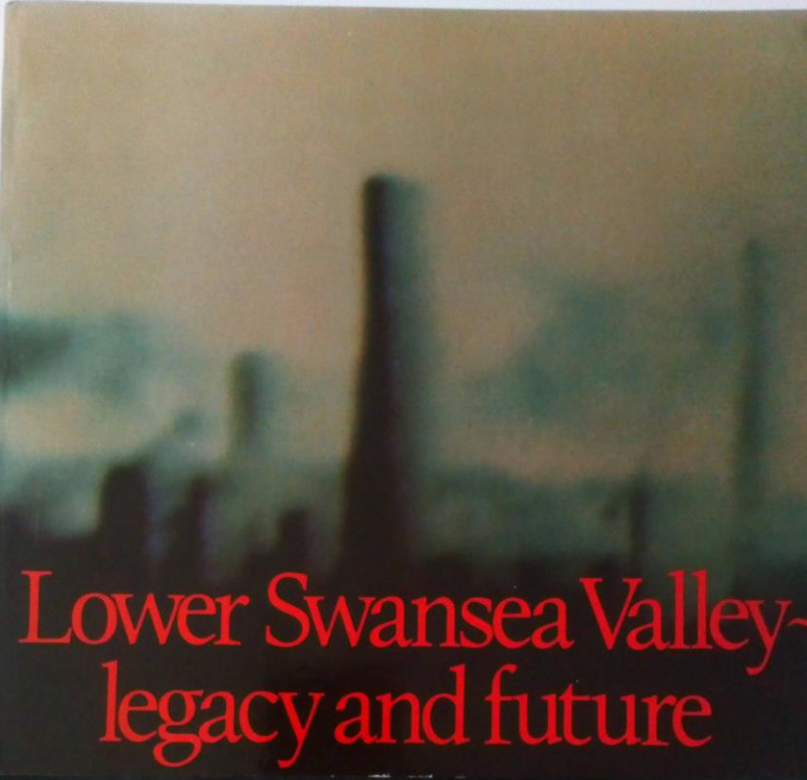
DEALING WITH DERELICTION

THE REDEVELOPMENT OF THE LOWER SWANSEA VALLEY



EDITED BY
ROSEMARY D.F. BROMLEY
GRAHAM HUMPHRYS





*Lower Swansea Valley-
legacy and future*



Thank you

