

# Flint Town - the context

## Poverty

- Life expectancy
- Poor quality social housing
- Lack of housing offer for those in (low paid) work
- Unemployment
- Poor health of residents
- Loneliness
- High street retail struggling







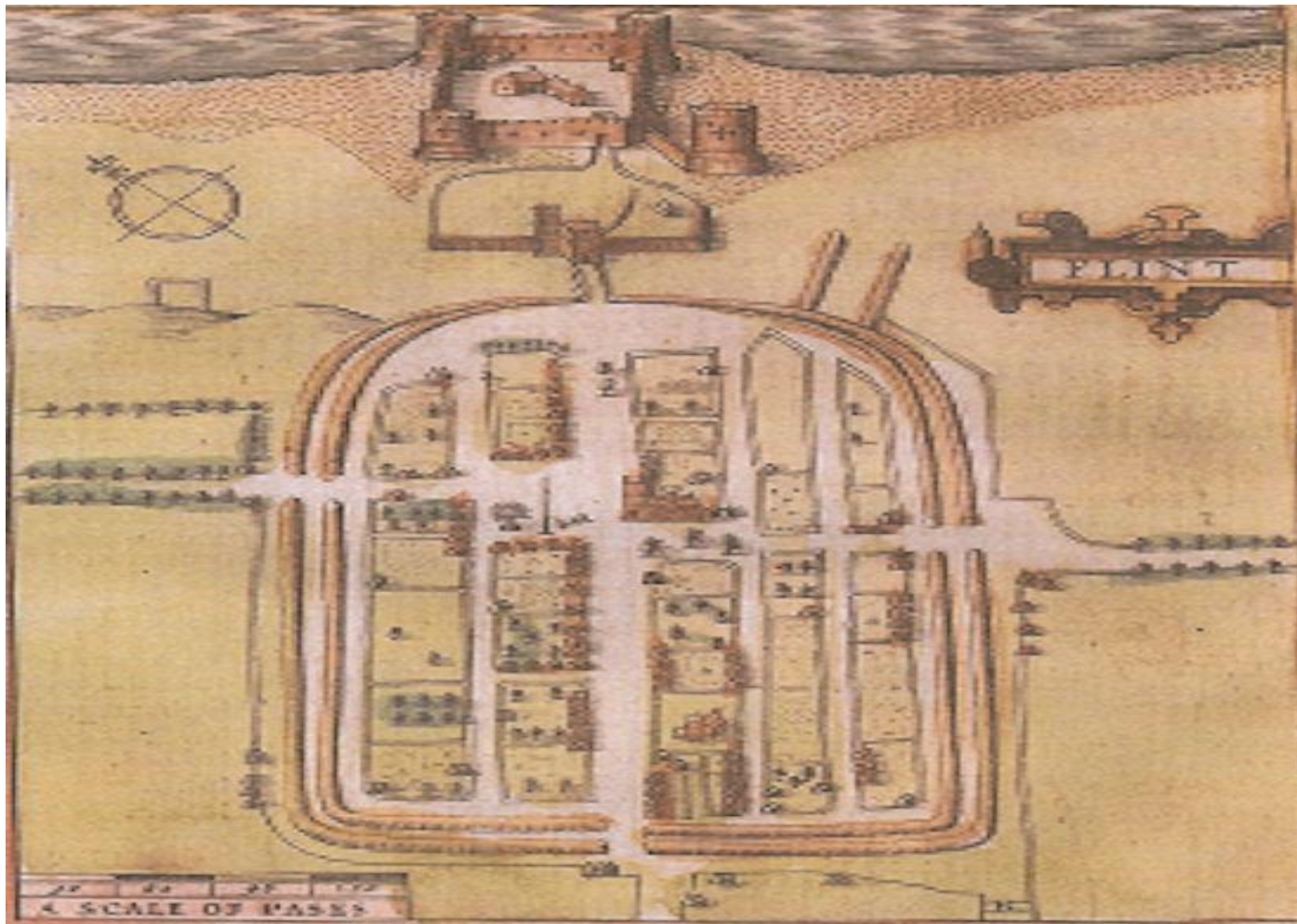


# The Retail Offer

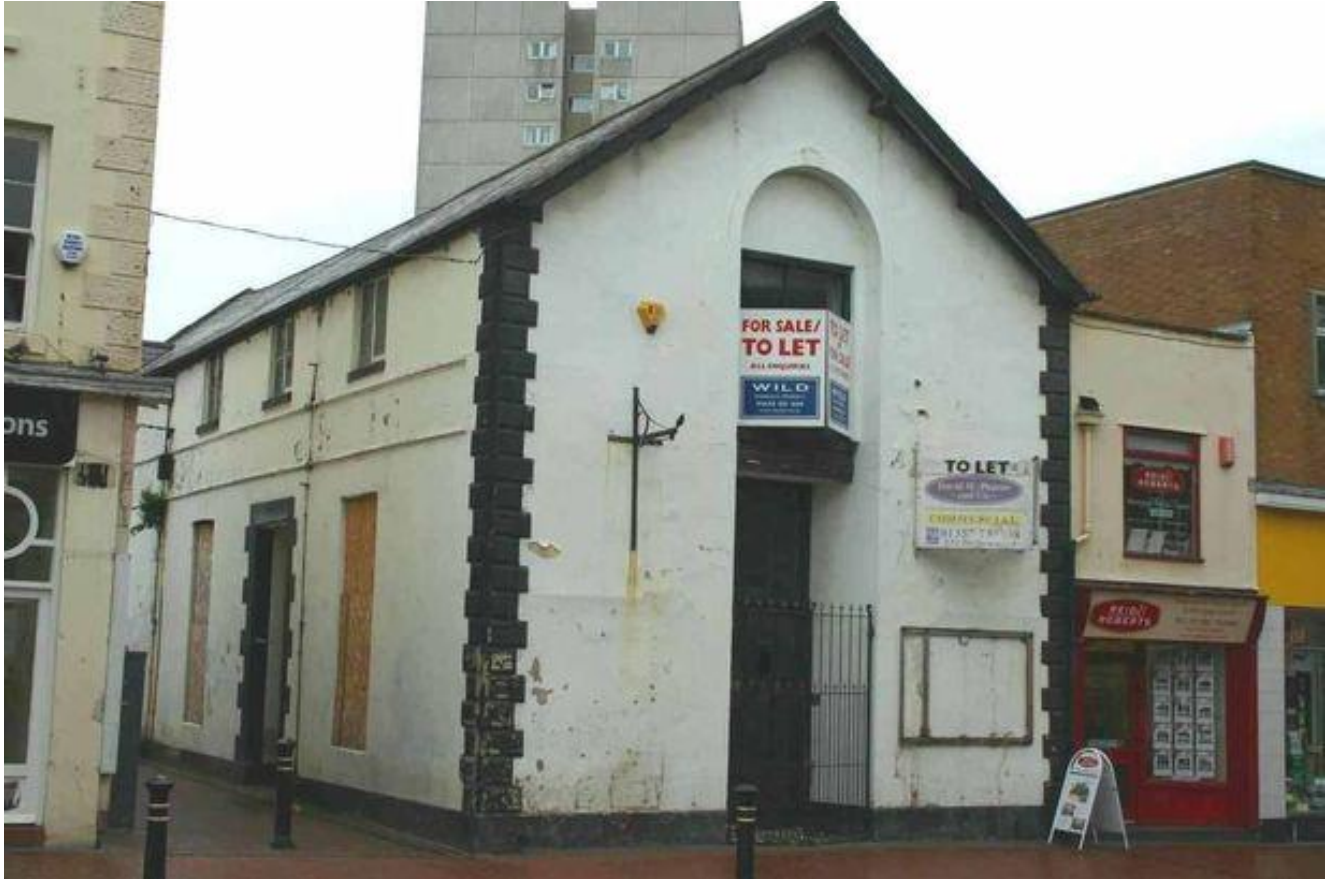




# Reflections on the past











# On to implementation - Nice and straightforward!



# Approach to the challenge

- » **Be ambitious and bold**
- » **Take risks**
- » **Start somewhere- plan tactically**
- » **Celebrate small steps**
- » **Stay strong in face of setbacks**
- » **Communicate, communicate, communicate**