



# Gwasanaeth Ynni Energy Service

*An introduction*



# Contents

- Introduction: Carbon Trust
- Aims
- Context & history
- Partners
- Other support
- Delivery process
- Additional work packages
- Questions

# The Carbon Trust

- Not-for-dividend, independent & international
- Mission: **accelerate the move to a sustainable, low carbon economy**



## ADVICE

Business  
Government  
Public sector

## FOOTPRINTING

Measurement  
Certification



## TECHNOLOGY

Implementation  
Finance  
Innovation





Gwasanaeth Ynni  
Energy Service

# Carbon Trust **Wales**

## Public sector

- Welsh Government Energy Service
- Re:fit Cymru: energy performance contracts
- Arbed: housing retrofit
- Cardiff Council: heat network

## Private sector

- Green Business Fund: advice & £5k grant for SMEs
- Carbon Trust loans: 0% interest loans from £3k - 200k



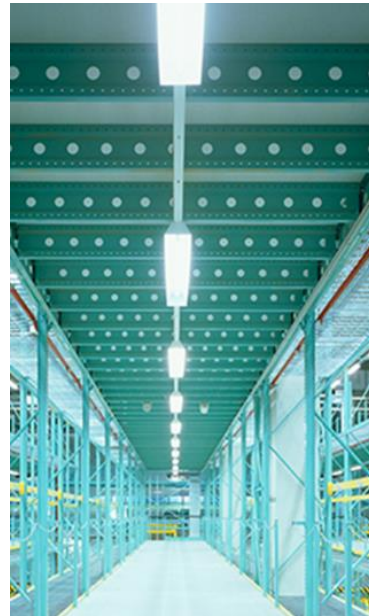


# Welsh Government Energy Service

***Aim:* Support public sector and communities to generate benefit for Wales from the transition to a low carbon energy economy**

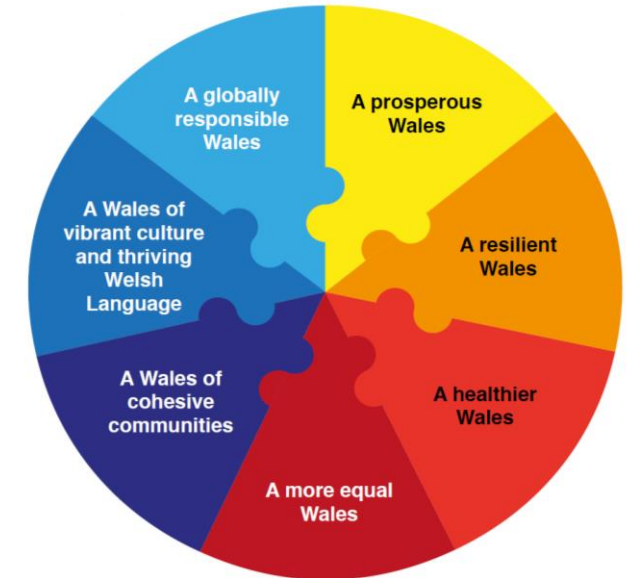
*How:* Develop and implement energy efficiency and renewable energy projects

*When:* 2018-2022

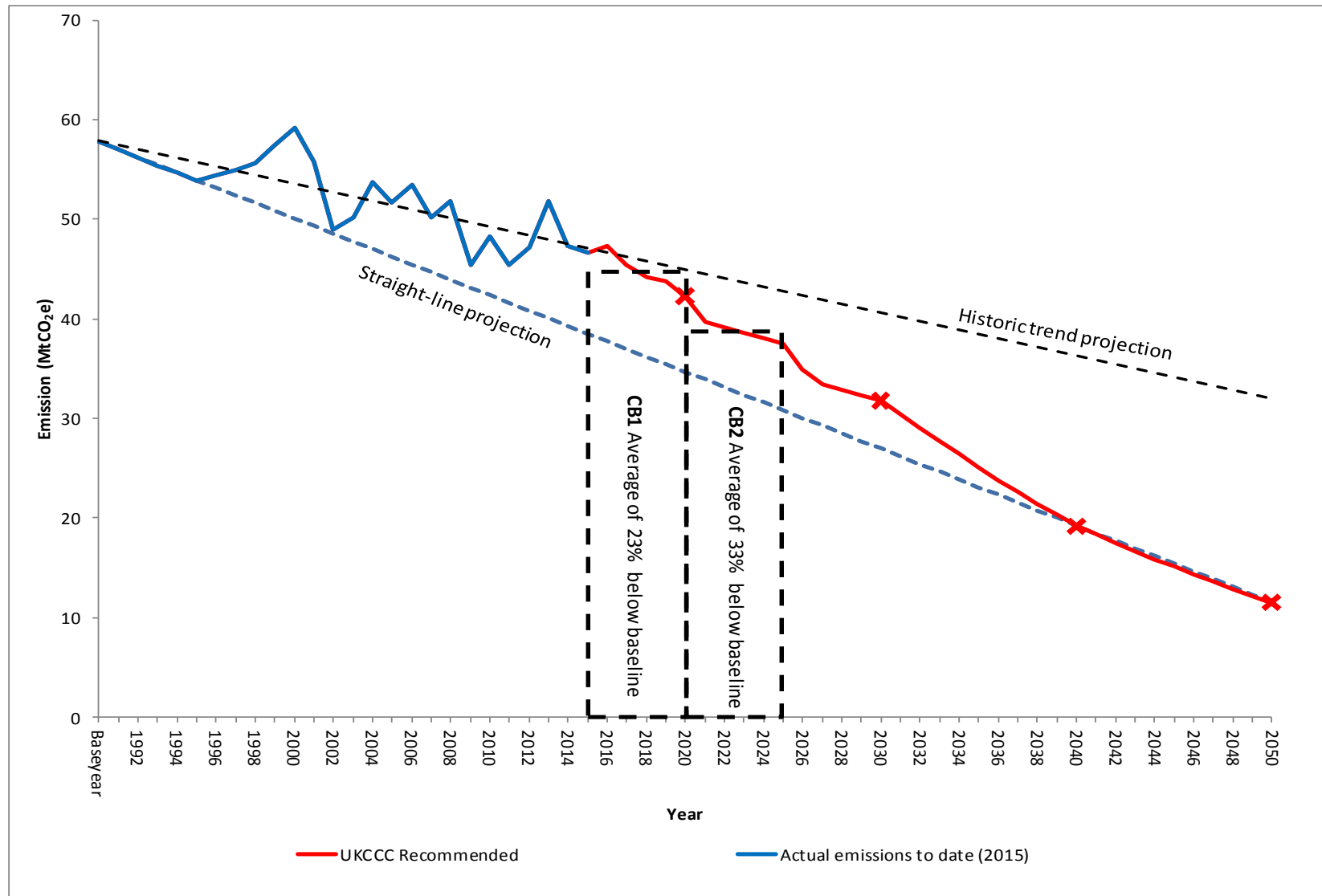


# Context

- **Environment Wales Act:**  
80% carbon reduction by 2050
- **Wellbeing of Future Generations Act:**  
7 wellbeing goals, long term decision making
- **Renewable energy targets:**
  - 70% of electricity use from renewables by 2030
  - 1GW of renewable electricity capacity to be locally owned by 2030
  - All new renewable energy projects to have an element of local ownership by 2020
- **Carbon neutral public sector by 2030**
- **Prosperity for All:** economic action plan: clean growth & equality



# Total Welsh emissions





# History

- **Previously** separate support programmes for community, public & private sectors
- **Now** combined community & public sector support
- *No private sector support (unless community focussed SMEs)*







Gwasanaeth Ynni  
Energy Service

# WGES partners

**energy** | **ymddiriedolaeth**  
saving | arbed  
trust | ynni



CARBON TRUST  
YMDDIRIEDOLAETH GARBON



LOCAL  
PARTNERSHIPS

# Links to other support

- *Aim:* to implement projects via existing finance mechanisms



Re:fit Cymru:  
**Energy performance  
contracts**  
(public sector)



Wales Funding  
Programme:  
**Interest free finance**  
(public sector)



Wales Energy Loans Fund:  
**Development Bank of  
Wales**  
(Communities)

# Who can use the service?

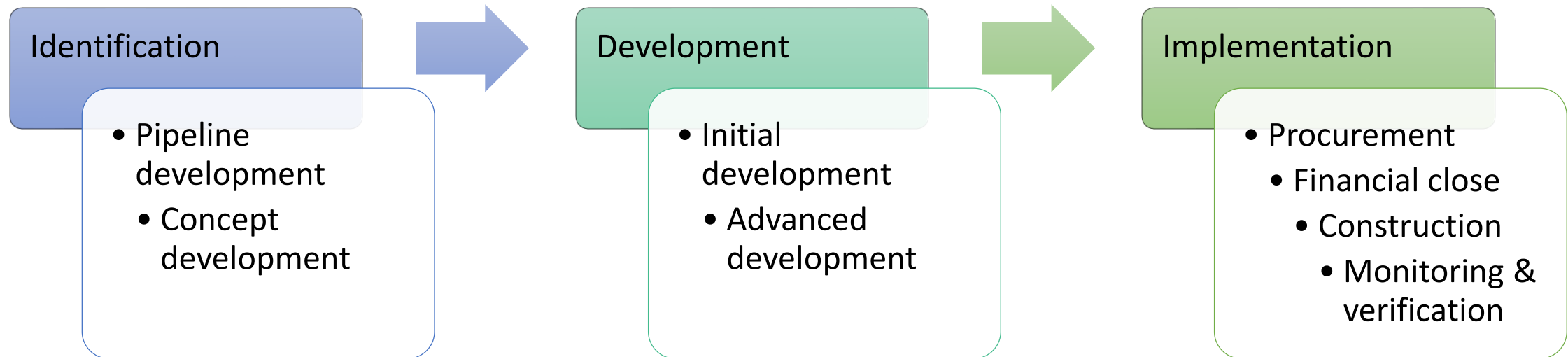
- Welsh Government
- Local authorities
- Health boards & trusts
- Universities, colleges & schools
- Police, fire & rescue services
- National parks
- National museums & libraries
- Arts & sports councils
- Community councils
- Registered social landlords
- Community groups

Note: not for private sector...

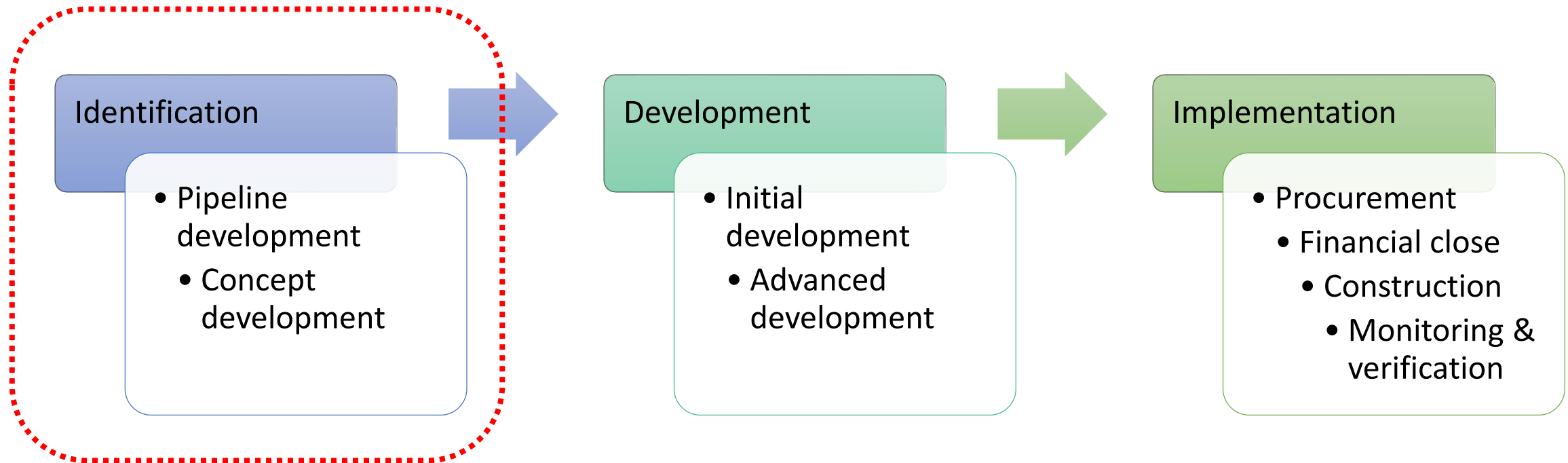
*unless* SMEs fall into community energy schemes



# Delivery process

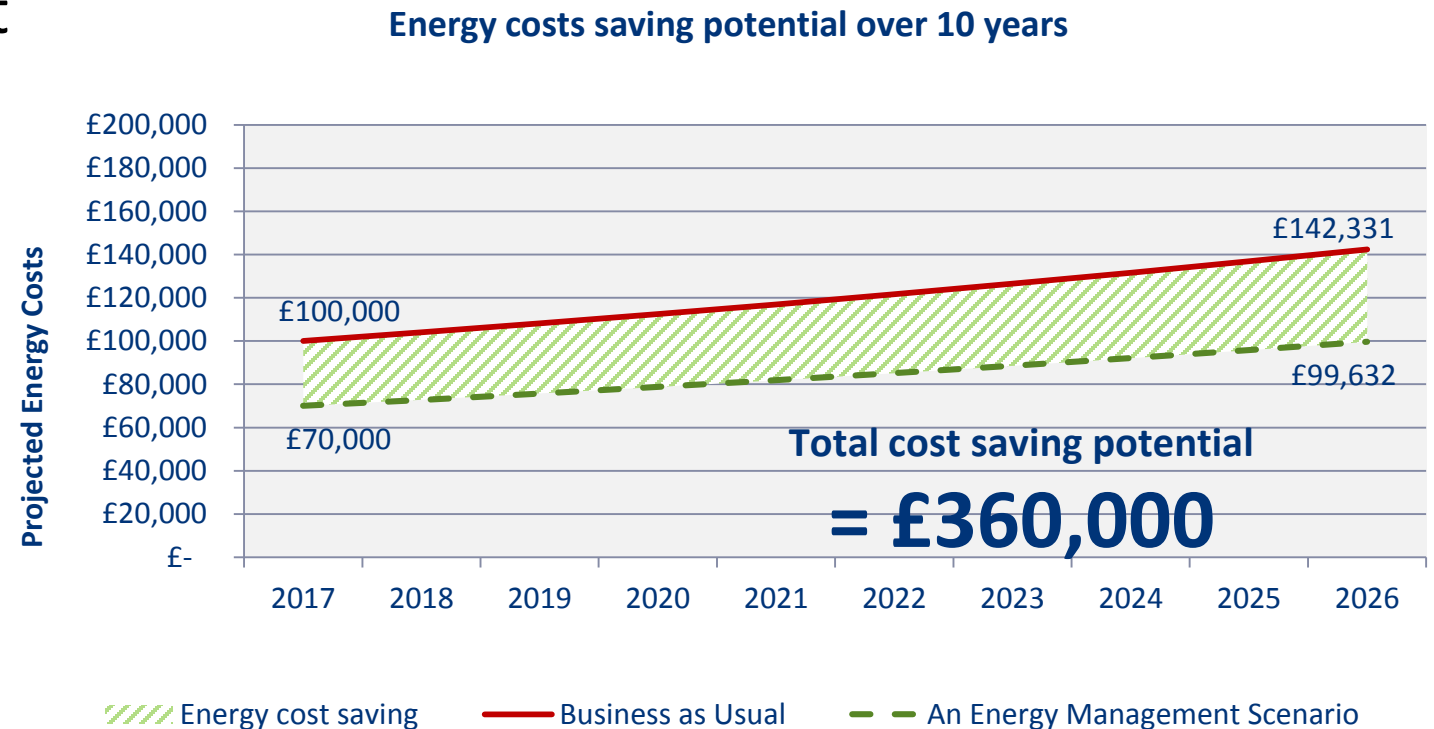


# Delivery process

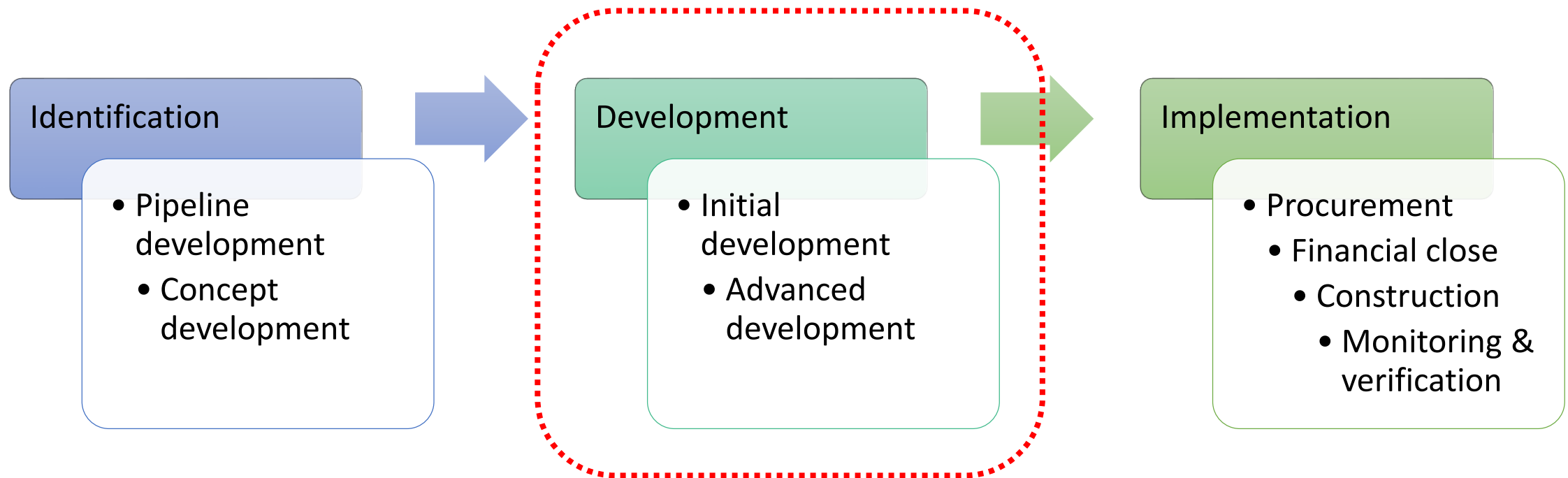


# Identification: Pipeline & concept development

- Account / client management
- Estate-wide assessments
- Detailed energy data analysis
- Benchmarking
- Targeted site audits
- Energy & carbon saving calculations
- Financial modelling
- Options appraisal of delivery and financing
- Securing senior commitment



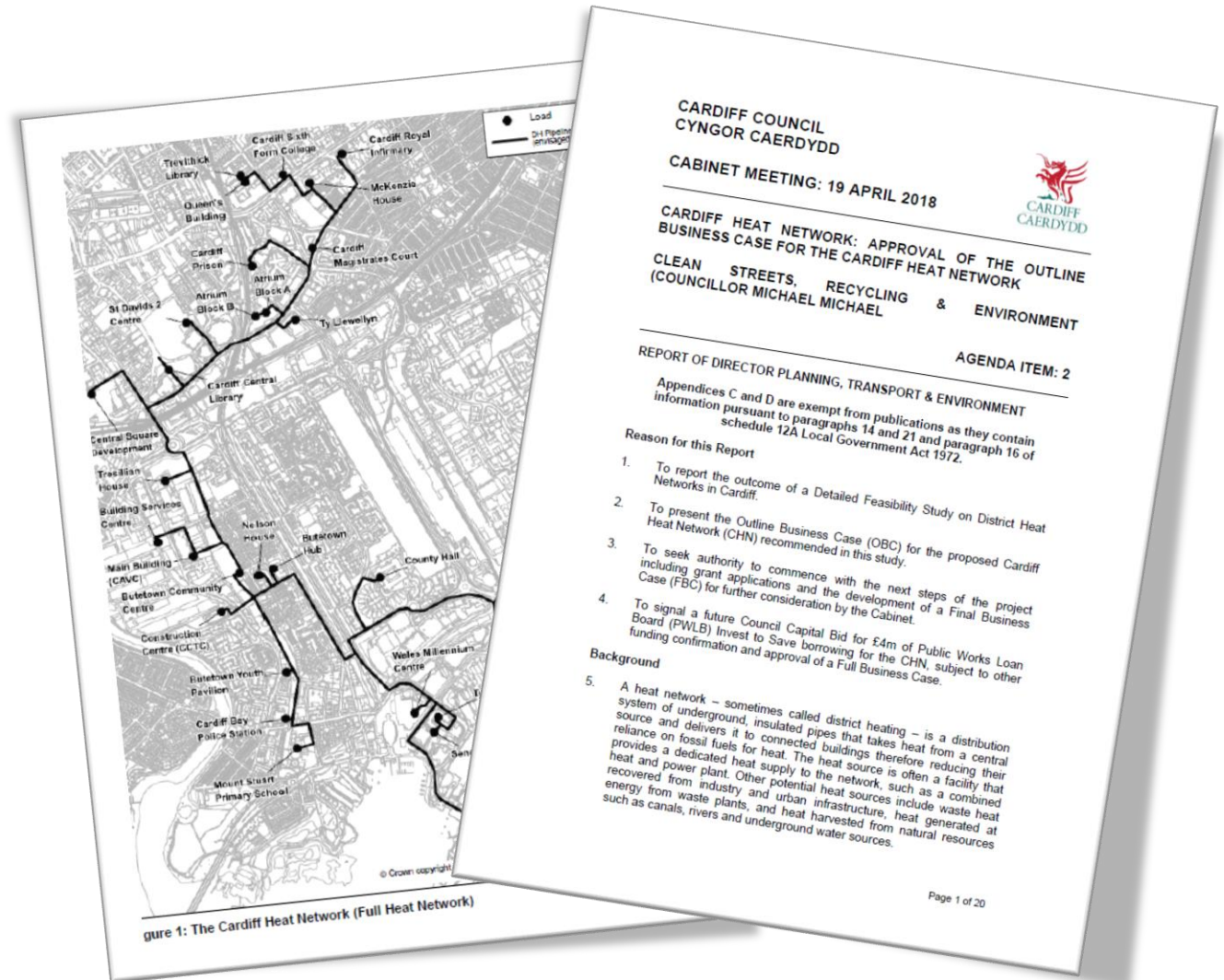
# Delivery process



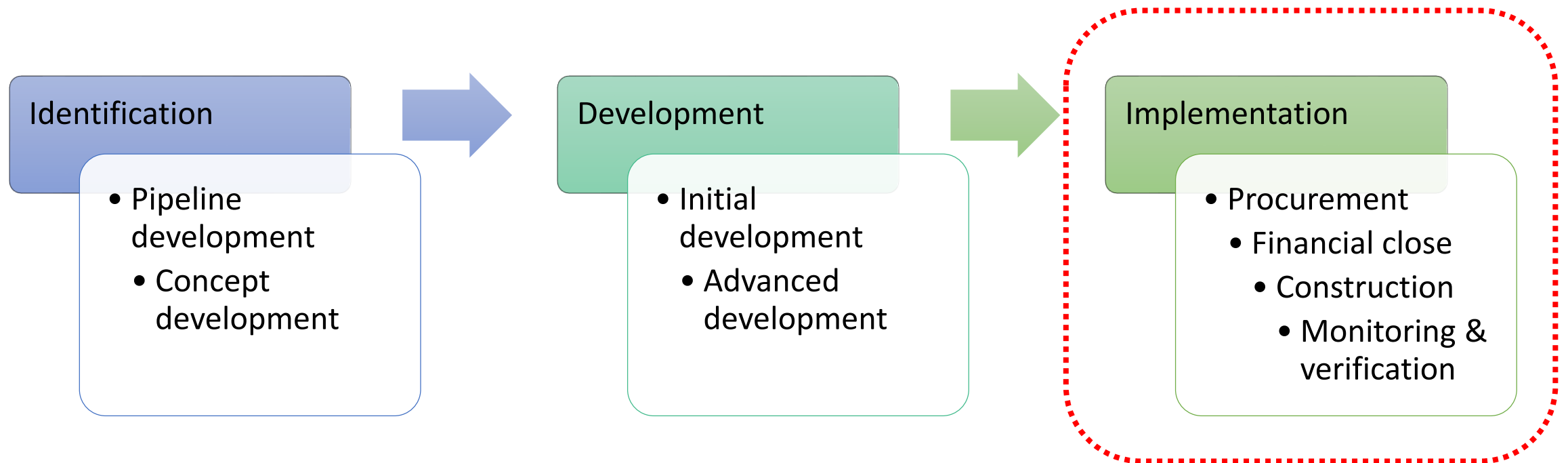


# Development: initial & advanced

- Develop work packages
- Stakeholder mapping / engagement
- Client approval process
- Approval paper support
- Financing application support
- Coordination of specialist surveys / assessments
- Investment readiness assessments
- Project needs assessment
- Financial due diligence
- Legal / Procurement
- Technical / environmental permissions
- Outline Business Case support

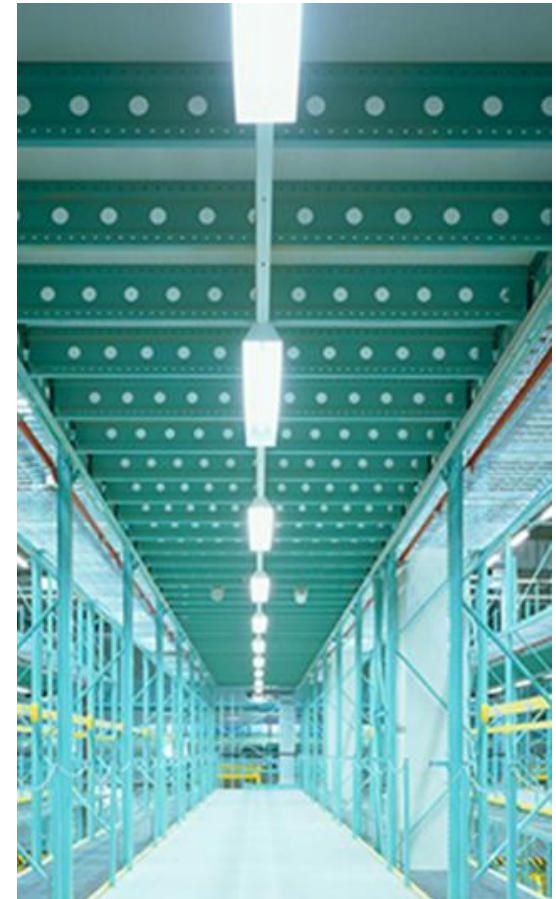


# Delivery process



# Implementation

- Full application for financing
- Final Business Case support
- Procurement support
- ITT review / advice
- Bid review (non scoring)
- Project management support
- Construction overview
- Guidance on monitoring & verification
- Capture and report benefits



# Additional work packages

- **WGES public sector survey**

Interview 52 public bodies on carbon management

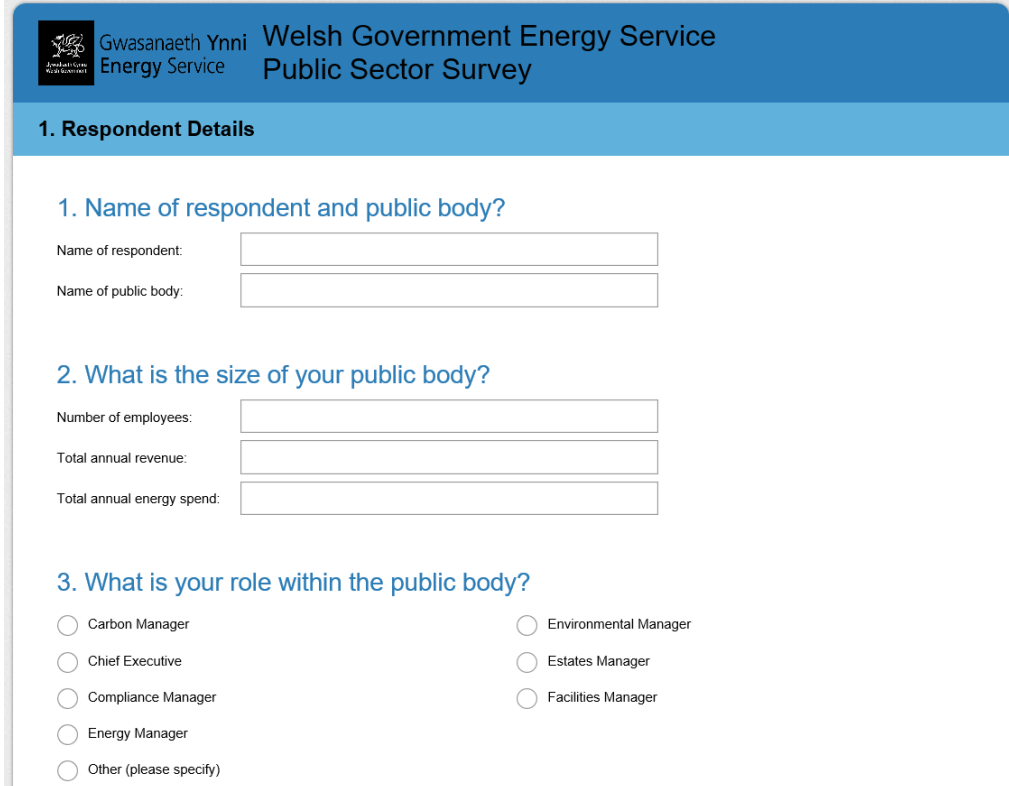
‘State of the sector’: ready for carbon neutral?

- **Regional energy planning**

To raise the level of ambition on energy at a regional scale

Retain more local economic benefit whilst delivering on carbon and energy targets for 2030

To support existing regional planning and development, with a focus on economic partnerships/growth deals



The screenshot shows the '1. Respondent Details' section of a survey form. The header includes the Welsh Government Energy Service logo and the text 'Gwasanaeth Ynni Energy Service' and 'Welsh Government Energy Service Public Sector Survey'. The form contains three main sections:

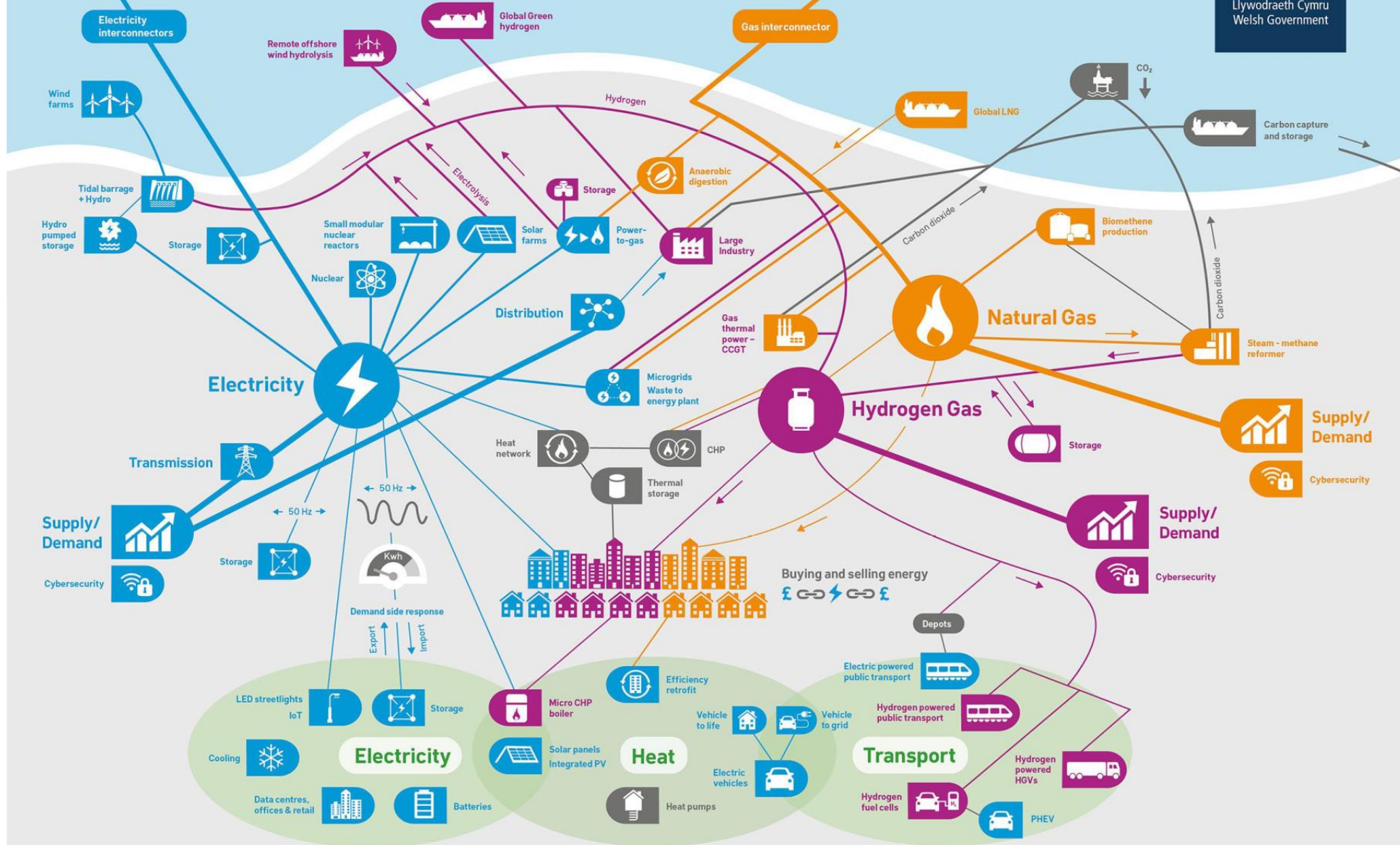
- 1. Name of respondent and public body?**
  - Name of respondent:
  - Name of public body:
- 2. What is the size of your public body?**
  - Number of employees:
  - Total annual revenue:
  - Total annual energy spend:
- 3. What is your role within the public body?**
  - Carbon Manager
  - Chief Executive
  - Compliance Manager
  - Energy Manager
  - Other (please specify)
  - Environmental Manager
  - Estates Manager
  - Facilities Manager



# A Vision for a Future Energy System



Gwasanaeth Ynni  
Energy Service



OGL Crown copyright 2018 WG34806

Source:  
Welsh Government, 2018



# Questions?

[poppy.potter@carbontrust.com](mailto:poppy.potter@carbontrust.com)

01443 845947

07738 195105