

Hinckley & Bosworth  
Borough Council

WELCOME

Cllr Martin Cartwright, Executive Member for Climate Change

A landscape of rolling hills with green and golden fields under a cloudy sky. The foreground is dominated by lush green grass, while the middle ground shows golden-brown fields. The sky is overcast with soft, grey clouds. The word "OVERVIEW" is centered in the middle ground in a bright green, sans-serif font, enclosed in a thin green rectangular border.

# OVERVIEW

# Hinckley & Bosworth Climate Change Strategy 2022 to 2024

Hinckley & Bosworth  
Borough Council

## Scope and Purpose

This strategy sets out the actions and opportunities that Hinckley & Bosworth Borough Council (HBBC) will undertake to address the climate change emergency declared in July 2019. Building upon our inaugural Strategy 2020 -2021 the Strategy will be underpinned by an action plan which will be reviewed annually. These include actions the council can take itself and how the council can lead others to take steps towards addressing the climate crisis through both influencing behaviours and by creating the policy and regulatory framework to ensure others take appropriate steps.

The strategy identifies the need to reduce carbon by switching from the dependence on fossil fuels to cleaner resources such as renewables. This will be achieved through the following themes:

1. Buildings and Land Use
2. Travel
3. Community
4. Waste
5. Economy

## Vision

To work towards making HBBC carbon neutral by 2030 (direct council emissions) and ensure the borough is net zero by 2050, considering both production and consumption costs, minimising the environmental impacts of our activities and through our leadership role influence and empower others to take similar actions.

To ensure all the council decisions consider the carbon usage and the resulting impact.

## Corporate Plan links

The Climate Change Strategy supports the Corporate Plan vision of creating great places to live, work and relax through creating clean and attractive places to live and work.



## 1. Buildings and Land Use

We will seek to utilise our land for carbon reduction and ensure our buildings are energy efficient

- Review the council house investment priorities to include enhanced energy efficiency measures in the council stock
- Undertake a review of existing council land, buildings and estates to identify carbon savings and develop an implementation plan based on those findings
- Monitor the council's carbon emissions against the baseline report and report these figures annually
- Utilise our land, where appropriate, to plant more trees and increase the tree canopy cover across the borough to maximise carbon storage and sequestration
- Support the growth and enhancement of the borough's multifunctional green infrastructure network and create a better linked habitat network by conserving, creating or enlarging existing habitats and delivering a biodiversity net gain
- Increase the use of rooftop solar panels as part of the decarbonisation of electricity
- Minimise the carbon usage in new development through our Local Plan policies and development management decisions, ensuring new builds are in accordance with building regulation requirements and planning conditions
- Use our housing powers to enforce minimum standards for private sector landlords and working with landlords to encourage further energy efficiency measures in properties
- Promote the council's collective switching initiative to minimise residents' fuel costs and ensure resident's fuel is from a renewable source
- Target fuel poor/vulnerable households with energy efficiency measures and facilitate access to financial assistance for homeowners to carry out home energy efficiency measures to their properties
- Encourage active environments within new housing developments, leading to increased cycling and walking
- Work with businesses to increase the use of solar pv and install other low carbon measures to increase their energy efficiency
- Support, where appropriate, the potential installation of solar farms

## 2. Travel

We will work to decarbonise travel across the council and borough

- Review the council's travel policy and incentivise reduction in energy
- Review the council's fleet of vehicles to ensure impacts are minimised
- Review taxi licence opportunities to encourage use of Electric taxis
- Install EV charging points at car parks and support others in the provision of charging points and other methods such as hydrogen
- Promote active travel such as walking and cycling through our healthy lifestyles work and through the Public Realm Strategy



### 3. Community

We will work with the community to lead change and increase climate change engagement

Use the council's communication channels to promote carbon reduction messages to raise awareness and encourage public engagement
Work with the county and district councils and other partners to progress joint initiatives
Work with schools to bring together a school community around climate change and ensure young people's views are heard and acted upon
Through our employment and skills taskforce bring best practice together from businesses across the borough
Work with the BID to develop a low carbon Hinckley town centre and to share best practice with our key rural town centres
Work with rural parishes and farmers on their climate initiatives
Work with community champions throughout the borough
Lobby central government and MPs to provide powers and resources to support local action
Support communities through our voluntary and community sector and partnership structures to provide training and awareness raising
Introduce an annual award at our Making A Difference Awards for the most innovative and impactful Climate Change community initiative
Use Environmental Protection and Clean Air Act powers to ensure residents activities are compliant and to monitor and review air quality across the borough
Support Neighbourhood Plan Groups in considering their resilience to climate impacts and incorporate locally relevant adaptation and mitigation policies in neighbourhood plans
Lead change within the council through climate friendly staff and member initiatives



### 4. Waste

We will ensure we waste less as a borough and stop dependence on single use plastic

Minimise the use of single use plastic across the council
Through the council's event programme promote waste and plastic reduction
Encourage food business to move to plastic free
Promote the delivery of a circular economy through encouraging upcycling, re-sale, reuse and recycling of goods rather than landfill
Implement changes to waste and recycling collections to meet the 2021 Environment Bill requirements eg weekly food waste collections



### 5. Economy

We will maximise financial opportunities to support climate change work

Ensuring carbon usage is considered in all procurement activity
Consider carbon usage when awarding grants and funding
Identify external funding opportunities
Ensure the council's energy is from sustainable sources
Ensure council's investments are placed in environmental and socially responsible investments
Consider ways of incentivising businesses and homeowners to adopt energy efficiency measures



### Climate Change: Call for Action

The success of this strategy depends on widespread action by local people and businesses alongside the commitment of Hinckley and Bosworth Borough Council and its partners. It is the responsibility of everyone to reduce carbon and limit the impacts of climate change. We, therefore, need to prioritise carbon reduction now and into the future.

Developed in conjunction with the cross party climate member working group. For more information please contact:

**Hinckley & Bosworth Borough Council**

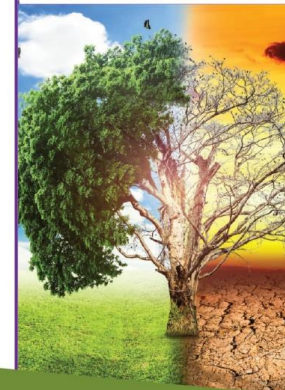
Tel: **01455 238141**

Email: [climatechange@hinckley-bosworth.gov.uk](mailto:climatechange@hinckley-bosworth.gov.uk)

Web: [www.hinckley-bosworth.gov.uk/climatechange](http://www.hinckley-bosworth.gov.uk/climatechange)



**Hinckley & Bosworth  
Borough Council**



## ACTIONS



**LAUNCH OF 27K  
FREE TREE  
GIVE AWAY**



**INSTALLATION OF  
EVC'S IN MARKET  
BOSWORTH,  
BARLWELL AND  
EARL SHILTON**



**WILDFLOWER  
PLANTING**



**TINY FOREST  
PLANTING IN  
ASSOCIATION WITH  
EARTHWATCH**