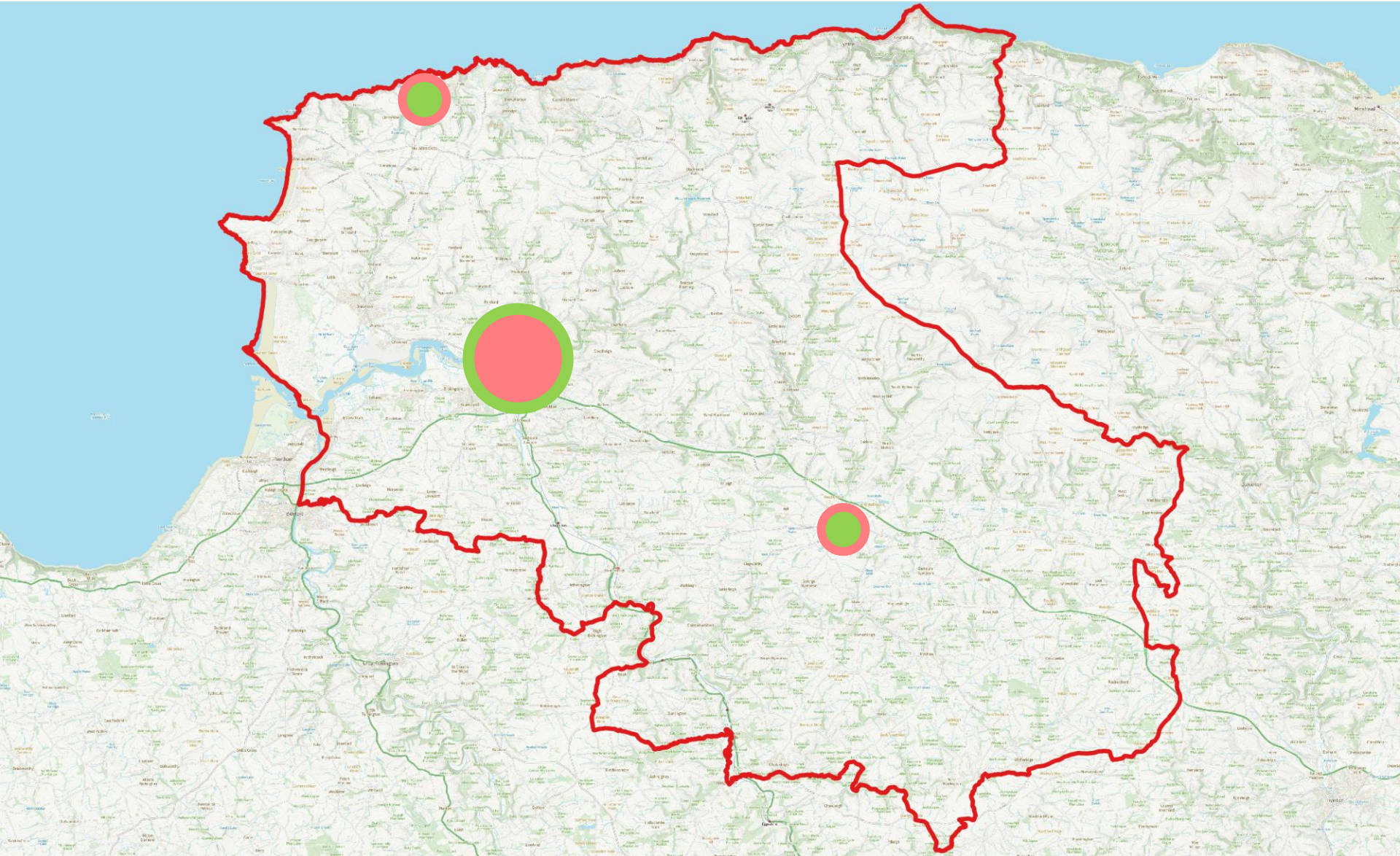




**Our Multi Agency Offer
Supporting Our Rough Sleepers
From the Freedom Centre**

Natasha Rowland

North Devon District ... our make up





One Devon



Northern Devon Healthcare
NHS Trust



North Devon & Torridge
Community Safety Partnerships



Devon &
Cornwall Police



Freedom
Transforming Lives



Belle's Place



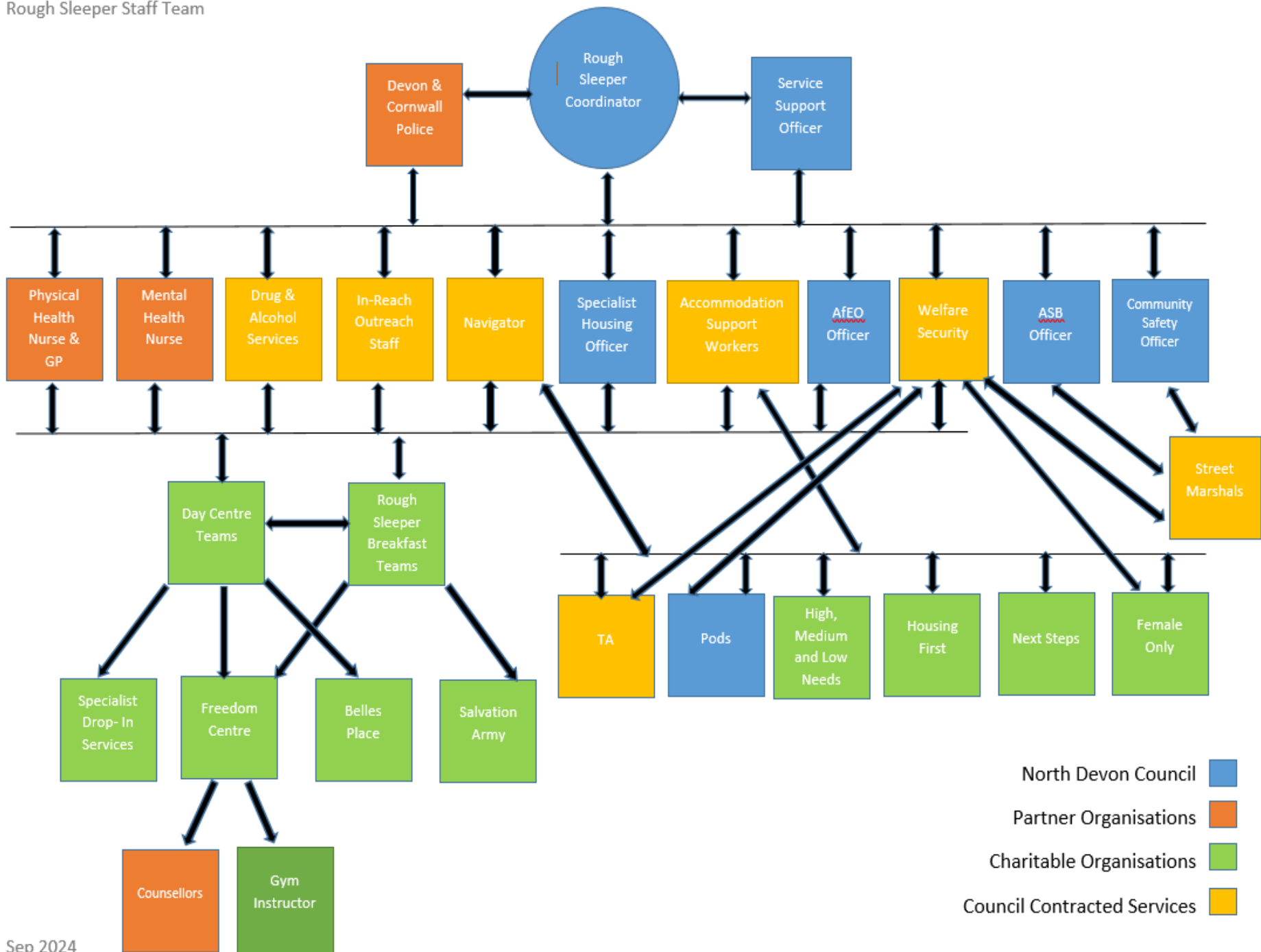
Providing A Safe Space
To Recover



PCC
Office of the Police and
Crime Commissioner
Devon and Cornwall



Better  Together



Our External Offer via the Outreach Team

- Early one morning the cameras from BBC Spotlight followed one of our Outreach Teams as they checked on local rough sleepers.
- <https://freedomcommunityalliance.org.uk/2023/03/13/outreach-team-in-the-news/>
- **One Team : One Vision : Better Outcomes**

The Freedom Centre Location



Our Internal Offer @the Freedom Centre

- The BBC News then caught up with the Outreach Team back at the Freedom Centre – indulge us for a further 3 minutes while we run this short clip
- <https://freedomcommunityalliance.org.uk/2023/03/13/outreach-team-in-the-news/>
- One Team : One Vision : Better Outcomes



WHAT WE DO?

**Why
We
Do It**

What Success Can Look Like

- Please take 3 minutes to listen to Ricky talking about his experience of staying in Barnstaple's Rough Sleeper Pods

<https://www.youtube.com/watch?v=tzHzAUD9FDo>

“ It’s not just about getting something to eat or somewhere to stay, it’s about growing our confidence, and learning to grow our horizons. ”

ROUGH SLEEPER ACCOMMODATION PATHWAY

CLIENT IDENTIFIED: IN PREVENTION, IN RELIEF OR UPCOMING PRISON RELEASE

AfEO, Returner or Low Needs

Low needs:
Temporary accommodation
(rooms in shared houses)

Medium needs:
Temporary accommodation
(some evening welfare support)

High needs:
Temporary accommodation
(overnight welfare support)

Client meets thresholds for **specialist commissioned housing** (e.g. Mental Health or Social Care)

Supported accommodation
55 bed spaces across Northern Devon (includes female only accommodation)

Client has complex needs but does not meet thresholds: **Housing First supported accommodation**

Client is identified to need **long term supported accommodation: Next Steps** (2 years average)

Client supported into **Social Housing** via **Devon Home Choice**

Client supported into **Private Let**

*Continual regular reassessment to reflect clients' needs with a step-up/step-down flexibility

Linked to the previous housing pathway

- 55 units of accommodation which includes
12 units of temporary accommodation
- 8 Pods costing circa £6k each
- + 3 additional units planned ahead of winter 2026

Outcomes from 01 Jan to 31 Dec 2025

- 179 rough sleeper cases were opened by the team
- 57 people were accommodated in our pods
- 30 placed in houses totalling 87 in TA
- 30 placed in Supported Accommodation
- 25 accessed PRS and 7 Social Housing
- The average age of our clients is 41
- Most of these are males

Last summer we saw an increase in those with no local connection to North Devon, The complexity of the clients continues to increase as does our commitment to support.

Do we have the perfect solution

- Absolutely not
- Are we using best endeavours – yes
- Are we better together - without a doubt
- Is there more to be done – yes



Thank you for your time

Please feel free to ask any further questions