



*City of*  
**BRADFORD**  
METROPOLITAN DISTRICT COUNCIL



**BRADFORD**  
**UK City**  
**of Culture**  
**2025**

# WINTER SERVICE ON A PAGE



## BRADFORD IN WINTER



OVER 50% of the population of Bradford lives around and above 500 feet above sea level



WE HAVE 24,000 Tonnes of rock salt stockpiled before the start of each season



The rock salt used is from a mine in Cheshire

## BRADFORD'S WINTER SERVICE



STAFF ON CALL 24/7 from OCTOBER TO APRIL



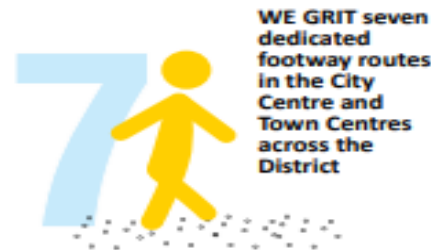
WE HAVE two dedicated weather stations in Queensbury and Silsden feeding road surface temperatures



WE GRIT 24 routes covering over 712 miles which equates to 62% of the Highway Network



WE PROVIDE near to 600 grit bins across the District



WE GRIT seven dedicated footway routes in the City Centre and Town Centres across the District

WE HAVE 24 Gritters



WE HAVE OVER 50 Drivers on stand-by

## WINTER REVIEW

In 2012-13 we completed 117 gritting runs using 22,000 tonnes of rock salt



WORST WINTER

In 2021-22 we completed 50 gritting runs using 8,500 tonnes of rock salt



LAST WINTER



On average we treat the network 60 times each winter which equates to 42,000 miles a year - almost enough to circle the world's equator twice

# How does City of Bradford Metropolitan District Council spend your money?



This is how each £100 is spent...



## Where does this money come from?

Councils get funding from a variety of sources including money from central government grants and other grants for specific purposes like infrastructure, fees and charges like car parking and from borrowing and investments, business rates and your council tax.

Figures compiled by the Local Government Information Unit (lgiu.org) using Revenue Account budget data from the Department for Levelling Up, Housing and Communities (21/22). This does not include other aspects of council spending such as capital investment or council housing, and figures have been rounded.

2021 – Highways & Transport

Calderdale Council £2.12, Kirklees £1.54, Leeds £1.79, Wakefield £2.78



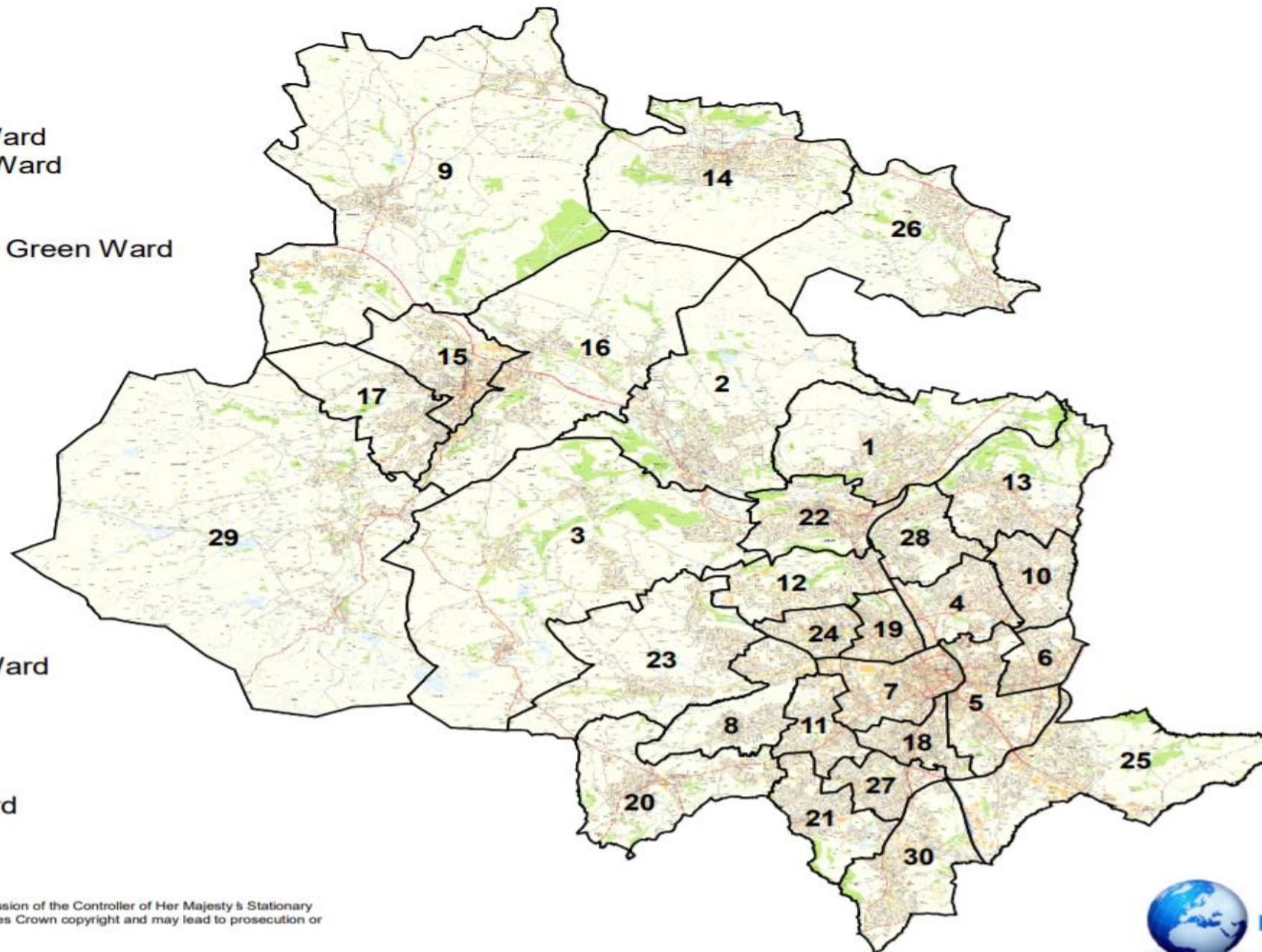


Across the Bradford District we were receiving numerous complaints regarding blocked gullies and standing water. We have 6 full time gully cleansing operatives with 3 gully wagons to maintain 98,000 gullies across the Bradford District.



No Ward

- 1 Baildon Ward
- 2 Bingley Ward
- 3 Bingley Rural Ward
- 4 Bolton and Undercliffe Ward
- 5 Bowling and Barkerend Ward
- 6 Bradford Moor Ward
- 7 City Ward
- 8 Clayton and Fairweather Green Ward
- 9 Craven Ward
- 10 Eccleshill Ward
- 11 Great Horton Ward
- 12 Heaton Ward
- 13 Idle and Thackley Ward
- 14 Ilkley Ward
- 15 Keighley Central Ward
- 16 Keighley East Ward
- 17 Keighley West Ward
- 18 Little Horton Ward
- 19 Manningham Ward
- 20 Queensbury Ward
- 21 Royds Ward
- 22 Shipley Ward
- 23 Thornton and Allerton Ward
- 24 Toller Ward
- 25 Tong Ward
- 26 Wharfedale Ward
- 27 Wibsey Ward
- 28 Windhill and Wrose Ward
- 29 Worth Valley Ward
- 30 Wyke Ward





**GULLY CLEANING IN BAILDON**  
**Tuesday 6 July 2021**  
**9am to 2pm**

Following concerns raised and a survey of your local area, Bradford Council will be cleaning out the gullies (grates in the road, as in the photograph below) in the following streets **from 9am to 2pm on Tuesday 6 July 2021:**



**Green Road \* Westgate \* West View \*  
Bank Crest \* Bank Walk \* Jenny Lane \*  
Moorland Avenue \* Moorland Crescent??**

In order that we can undertake the gully cleaning, **please avoid parking your vehicle near the gullies on this day.** If we cannot access the gullies, we cannot clean them. Our work will not take more than a few hours to complete.



**Please remove all parked vehicles by 8.30am on Tuesday 6 July.**

Your co-operation is much appreciated.

For further details, please call the Shipley Area Office on 01274 437146 or email [shipleyareaneighbourhoodforums@bradford.gov.uk](mailto:shipleyareaneighbourhoodforums@bradford.gov.uk)

**Bradford Council Contact – 01274 431000 or [councilcontact@bradford.gov.uk](mailto:councilcontact@bradford.gov.uk)**



☐  
The Occupier/Owner  
City Ward  
Bradford

Department of Place

Highway Delivery Unit  
Foundry Lane  
Bradford  
BD4 7NW

Contact: → Paul Naylor  
Tel: → (01274) 431000

Date: 2 July 2021

Dear Sir/Madam

**GULLY-CLEANSING-BRADFORD**

Your street has been identified by our gully maintenance section as a highway which is hard to access due to parked vehicles.

On **Monday 5th July 2021** Bradford Council would like to gain access and clean all roadside gullies on the street and therefore ask you to please keep the street gullies clear of parked vehicles between **09:00-17:00**. Vehicular access will be available at all times.

If you require any further information, please do not hesitate to contact me on the details above.

Yours faithfully

Paul Naylor  
Divisional Manager  
Highways Delivery Unit





**Joanne Dodds** @CllrJoanneDodds 13:12 | 3 Jun 2021

Learning about gulley cleaning & seeing 1st hand the effect of careless unbelievable actions, residents need 2 b aware of the damage they are doing when pouring oil, cement & other rubbish down the gulley, it needs to stop, respect the environment @bradfordmdc <https://t.co/6m6aTY6UF1>

RETWEET







## Labour Councillors for Thornton Allerton and Sandy Lane

11 Jun • 🌐

Following our interventions the gully team have been out across Sandy Lane clearing the gullies/drains.

There are other days of action planned in the coming months to deal with others in the area.

Thanks to Masood and rest of the team



## Kamran Hussain

2 Jun • 🌐



Day of Action in Toller today with the gullies team, street cleaning team, wardens and Police. It was great to see many residents come out and help.

Councillor Kamran Hussain  
Councillor Arshad Hussain  
Councillor FoZIA Shaheen



## Noreen Akhtar

Admin • 10 Jun • 🌐



Great day delivering a day of action in Manningham Ward, made better with great weather and community contacts.





# HIGHWAY MAINTENANCE WINTER SERVICE OPERATIONAL PLAN





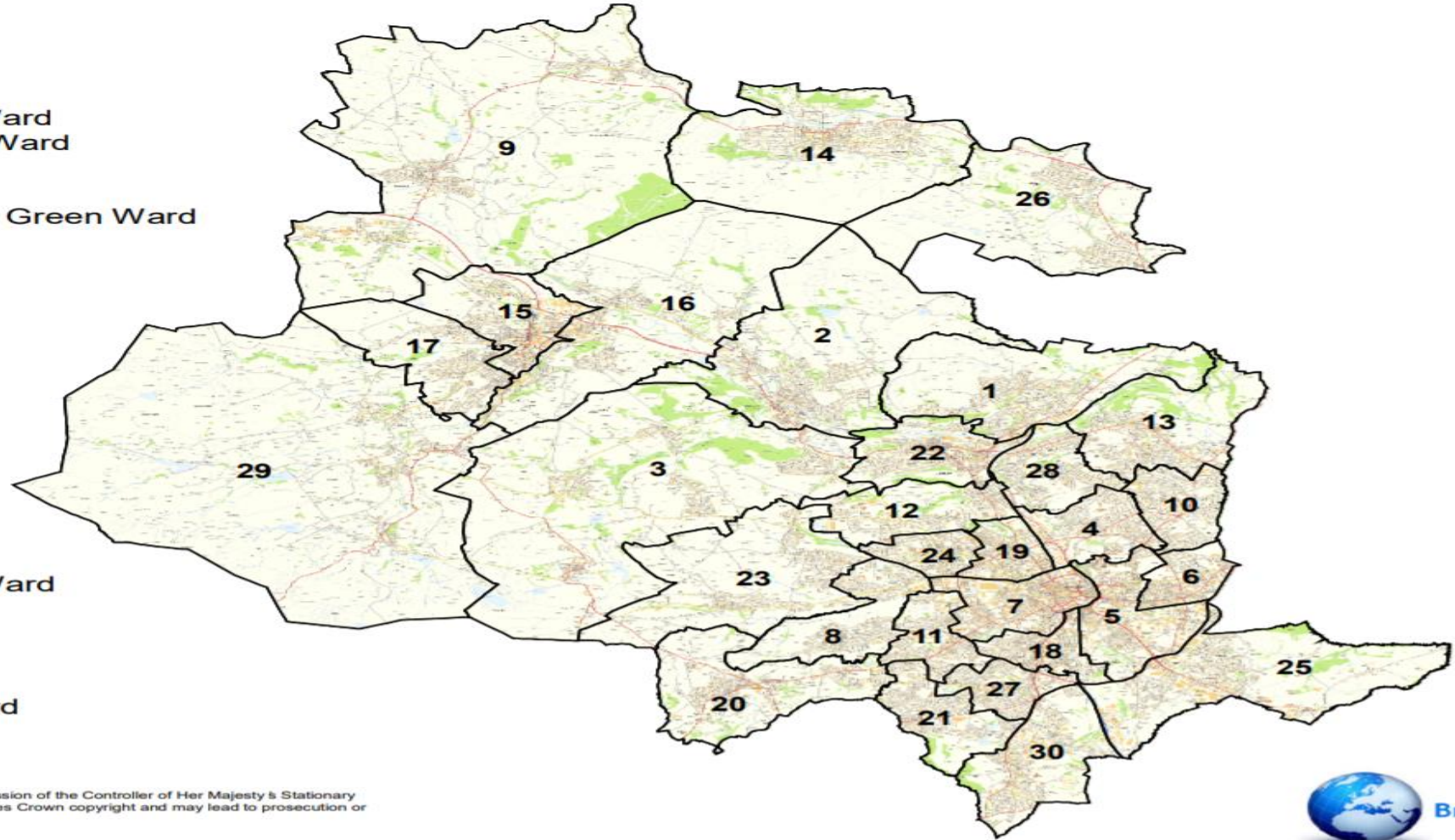
# THE LEGISLATION

The Highways Act 1980 Sections 41 and 58 states that the Highway Authorities have a statutory duty to maintain the highway and must at all times take reasonable care to ensure that the highway is not dangerous

Section 150 of the Highways Act 1980 also imposes a duty upon authorities to remove any obstruction on the highway resulting from *“accumulation of snow or from the falling down of banks on the side of the highway or from any other cause”*. The Railways and Transport Safety Act 2003 (section 111) has inserted an additional section (41(1)) to the Highways Act 1980) which places a duty on Highway Authorities in respect of winter conditions. In particular, it states:

*“a Highway Authority is under a duty to ensure, so far as is reasonably practicable, that safe passage along a highway is not endangered by snow or ice”*.

- No Ward
- 1 Baildon Ward
- 2 Bingley Ward
- 3 Bingley Rural Ward
- 4 Bolton and Undercliffe Ward
- 5 Bowling and Barkerend Ward
- 6 Bradford Moor Ward
- 7 City Ward
- 8 Clayton and Fairweather Green Ward
- 9 Craven Ward
- 10 Eccleshill Ward
- 11 Great Horton Ward
- 12 Heaton Ward
- 13 Idle and Thackley Ward
- 14 Ilkley Ward
- 15 Keighley Central Ward
- 16 Keighley East Ward
- 17 Keighley West Ward
- 18 Little Horton Ward
- 19 Manningham Ward
- 20 Queensbury Ward
- 21 Royds Ward
- 22 Shipley Ward
- 23 Thornton and Allerton Ward
- 24 Toller Ward
- 25 Tong Ward
- 26 Wharfedale Ward
- 27 Wibsey Ward
- 28 Windhill and Wrose Ward
- 29 Worth Valley Ward
- 30 Wyke Ward

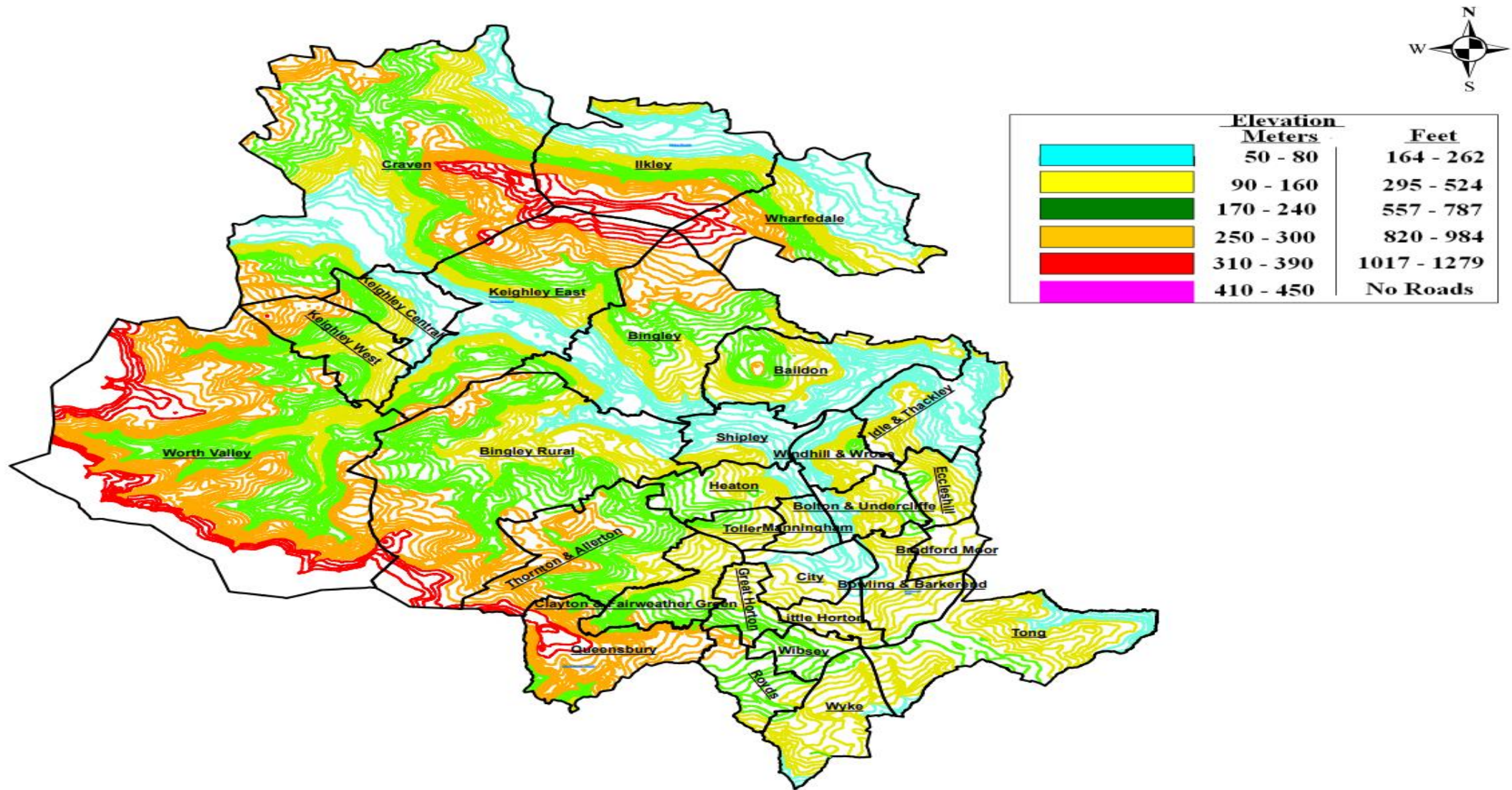


Based upon the Ordnance Survey mapping with the permission of the Controller of Her Majesty's Stationary Office Crown copyright. Unauthorised reproduction infringes Crown copyright and may lead to prosecution or civil proceedings.  
 City of Bradford Metropolitan District Council 100019304  
 2012



Bradford operates one of the largest Winter Maintenance operations in the UK for a Metropolitan District Council – Bradford District is 141 square miles





Queensbury is one of the highest Parishes in England at an altitude of over 1,100ft above sea level compared to Bradford City Centre at 325ft.

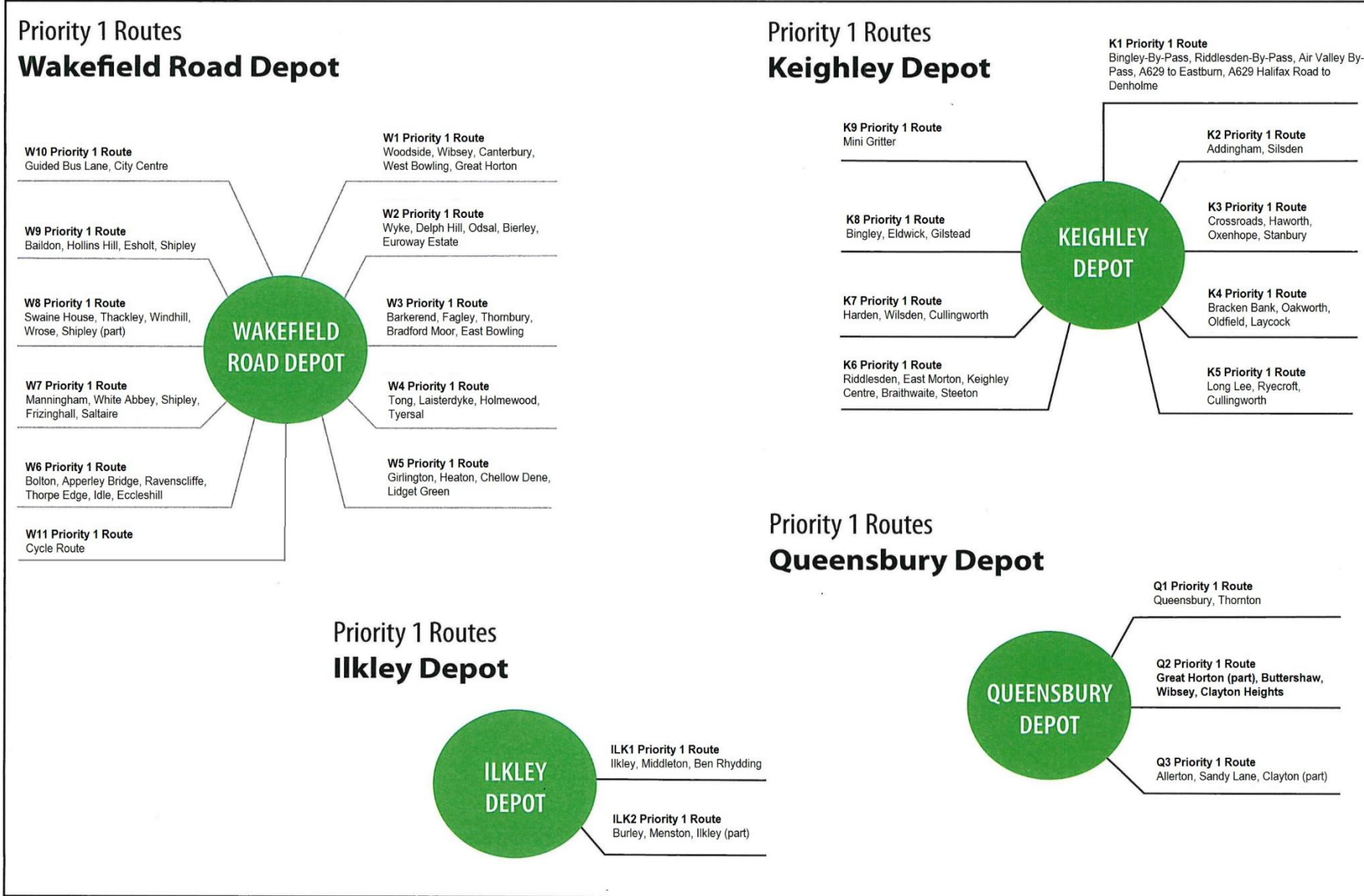
To the North of the district Oakworth lies at an altitude of 800ft above sea level compared to Keighley Town Centre at 271ft.

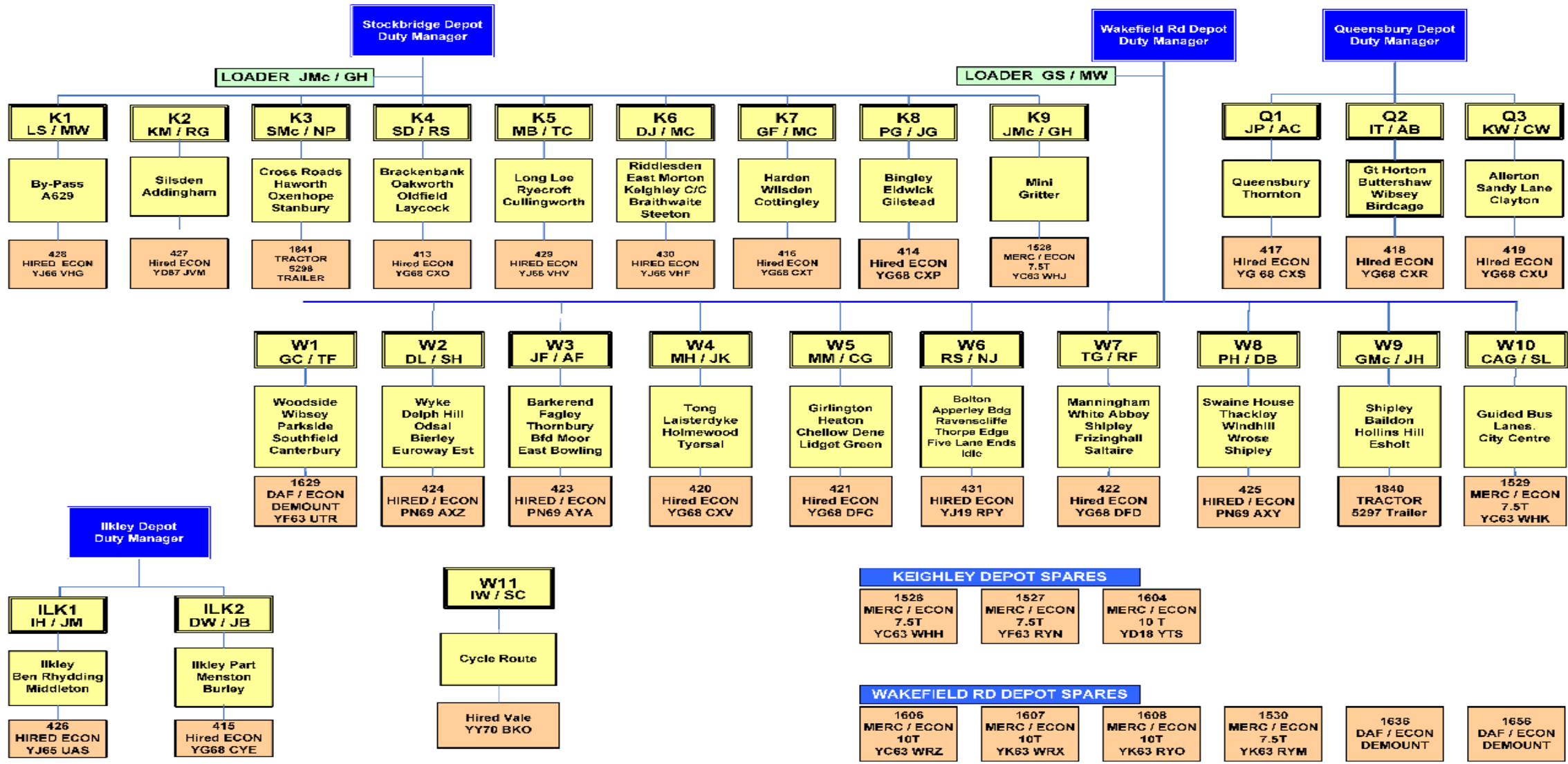




We use In-house drivers from Highway Delivery Unit, Cleansing, Parks & Landscapes Departments to save costs







Priority 1 routes - 24 routes covering approximately 712 miles of the highway network representing a treatment proportion of 62%  
 Priority 2 routes – side roads, local community access to main roads





## Winter maintenance



### Gritting routes and gritting requests

 <p><a href="#">View gritting routes</a></p>	 <p><a href="#">Request gritting</a></p>
---	---

### Information about gritting

 <p><a href="#">How, when and where we grit</a></p>	 <p><a href="#">Winter operational plan</a></p>
--	--

### Latest Tweets from Bradford Council

**Tweets from @bradfordmdc**

Bradford Council Retweeted

 **Bradford MDC Country...** @Bradford\_CROW · 18h

We're installing boardwalk on the riverside at Bradford and Bingley Sports Club, Cottingley. The river has eroded the original footpath line - this will make things safer. Thanks to all at the Club for their co-operation and support. Please stick to the path around the pitches.



#### Other pages in this section

- [Highway Maintenance Winter Service Operational Plan](#)
- [Grit bins](#)
- [How, when and where we grit](#)





Priority 3 routes – Plough routes, rings roads, main routes for emergency services





Priority 4 routes – Night patrol (external contractors), patrols/treats highways above 200/500ft altitude overnight. Keeping management up to date with conditions, allows sufficient rest periods for CBMDC, high ground areas





## FOOTWAY GRITTING

Priority 1F – Seven routes in total which are treated in the city and town centres which are pedestrian areas, busy urban shopping and business areas, transport interchanges, public buildings and outside St Luke’s, Bradford Royal Infirmary (BRI) and Airedale hospital at Keighley. These footways are treated during periods of prolonged frost and ice or snow events. Parks & Landscapes are the main resource behind this function of the operation.

Priority 2f routes are medium usage routes through local areas, used by the public to access local shopping areas, post offices, medical centres and school routes in busy residential areas and villages. Priority 2 footway gritting routes will be gritted after all Priority 1F routes are completed and resources are available.

Hand gritting of all other priority areas will be carried out as and when resources become available





# Graphs and Tables

Graphs

Show tables:

Observations

Next 36 hours

Next 8 days

Next 15 days

[View vertically](#)

	Thu	Fri, 10	Sat, 11	Sun, 12	Mon, 13	Tue, 14	Wed, 15	Thu, 16	Fri, 17	Sat, 18	Sun, 19	Mon, 20	Tue, 21	Wed, 22	Thu, 23	Fri
	18	06	18	06	18	06	18	06	18	06	18	06	18	06	18	06
<b>A644 Queensbury</b>																
Worst road condition																
Lowest surface temperature (°C)	12	13	12	13	12	13	11	12	13	14	13	14	13	14	13	14
Highest surface temperature (°C)	22	31	29	31	27	28	24	22	28	25	30	26	31	26	29	25
Snowfall (cm)	0.0															
Snowfall altitude (km)	2.3	1.8	1.7	1.8	1.6	1.4	1.8	1.7	2.1	2.0	2.1	2.2	2.6	3.2	3.1	3.3
Precipitation probability (%)	0	10	20	15	20	25	35	30	35	30	20	0.0	0.2	0.5	<0.1	0.5
Precipitation (mm)	0.0	0.1	<0.1	0.0	0.0	0.1	0.3	0.5	0.8	2.8	0.3	1.8	0.5	0.1	0.0	0.2
Air temperature min. (°C)	11	10	8.8	9.1	9.3	9.4	10	11	10	12	10	9.7	9.8	9.4	9.5	10
Air temperature max. (°C)	14	18	17	16	15	13	14	15	14	17	16	14	15	14	16	15
Cloud cover (okta)																
Wind speed (mph)	14	16	17	19	16	15	14	9.6	10	9.2	11	12	14	12	14	13
Wind direction																
Wind gusts (mph)	24	30	29	35	33	32	31	25	23	22	20	22	28	29	25	24

Icon Explanation

Colour Explanation

Since the winter of 2017/18 Bradford Council as part of the West Yorkshire Combined Authority, has contracted MeteoGroup and Vaisala Weather Bureau to provide weather information and forecasting to the authority on a daily basis during the winter risk period.



Weather forecasting for the district is monitored from 2 dedicated weather stations located at Queensbury and Silsden which feed road surface temperatures to the Vaisala Weather Bureau. Weather information for MeteoGroup is also gathered from these 2 Stations along with their own weather forecasting models. As part of the improvements following the 2017-18 season further upgrades have been made to these weather stations to incorporate CCTV cameras to allow visual confirmation of data provided from these stations





Near 600 grit bins across the highway network, criteria introduced to manage expectations. During the Winter of 2017-18 the Council introduced a Community Grit bin scheme. This scheme allowed several Town Councils to purchase grit bins with rock salt from the Council at a cost of £100. Refills are charged at £50.

LOCATION-OF-SALT-BIN █ █ █ █	DATE-OF-ASSESSMENT █	ASSESSED-BY █ █	
CHARACTERISTIC █	SEVERITY █	POINT █	ASSESSED- ACTUAL-POINT █
1)→ Carriageway-Gradient	Greater-than-1-in-10	75	█
	1-in-10-to-1-in-30	40	
	Less-than-1-in-30	NIL	
2)→ Altitude	Land-over-700ft	75	█
	Land-over-500ft	50	
	Land-between-250-500ft	25	
3)→ Distance-to-next-grit-bin	Less-than-200m	0	█
	200m-to-400m	15	
	More-than-400m	20	
4)→ Close-proximity-to-and-falling-towards-and-away-from-junctions	Heavily-trafficked-road	80	█
	Moderately-trafficked-road	60	
	Lightly-trafficked-road	30	
	Not-falling	NIL	
5)→ Number-of-premises-for-which-this-is-the-only-access	Over-100	30	█
	50-100	20	
	20-50	10	
	0-20	NIL	
6)→ High-Traffic/Strategic-General-location-and-High-pedestrian-movements	School-or-community-centres	25	█
	Designated-old-persons-accommodation	25	
	Clinics-or-doctors-surgeries	25	
7)→ Road-Priority	On-priority-1-Main-Road-Gritting-Route	-50	█
	On-Priority-2-Side-Road-Gritting-Route	-50	
█	█	TOTAL	This-needs-to-be-over-125-to-pass



In 2011 a pilot scheme to introduce “Snow Teams” within Bradford district was introduced. This scheme assisted groups within communities to carry out winter treatment of footpaths. The community self-help and the snow team scheme enables communities to provide an enhanced service over and above that which the council provides. The scheme was promoted through the Council website and social media. Since the introduction of the scheme the numbers of snow wardens has grown and groups across the district have been provided with resources.





The Council's Driver's Hours policy determines the total hours a driver can work during the day, the minimum length of break between shifts and the weekly rest periods. Drivers must not drive for more than ten hours per day. The daily driving limit applies to time spent at the wheel actually driving on a public road.

# TYPICAL WORKING DAY FOR HIGHWAY OPERATIVE (not a manager)

- 04:00 wake up and set off to depot
- 04:30 arrive at depot, fill wagon with salt ready for 05:00 departure
- 05:00 start Priority 1 route
- 07:30 return to depot, wash off, park up gritting wagon after vehicle checks
- 08:00 start day job (cleaning gullies for example)
- 12:00 finish on site head back to depot
- 12:30 sent home to rest
- 15:00 set off from home to depot
- 15:30 arrive at depot, fill wagon ready for 16:00 departure
- 16:00 start Priority 1 route
- 18:30 return to depot, wash off, park up gritting wagon after vehicle checks
- 19:00 arrive home



What are the issues we face?



Public awareness -  
Who changes to  
Winter tyres? Sets  
off early/walks to  
school/work?



Parked vehicles blocking access – P2's



Standing traffic - if traffic isn't moving neither  
are the gritting wagons



Street furniture blocking access for footway  
gritting





Increase in demand – vaccination centres/new housing developments/grit bins



Lack of help - What do you do when it snows?



Ageing workforce - lack of motivation, supermarkets pay more, unsociable hours



Less snow - more pressure on decision makers



## When did you last say thank you?

*Just witnessed one of the council's grit wagons fly down NDA at 4.30 pm, went out to check road surface, a miniscule amount of grit has been applied, neither use or ornament if we have black ice overnight*

COMPLAINTS ABOUT GRITTING - PLEASE CONTACT CUSTOMER AS WANTING COMPENSATION AS FELL IN THE FARMERS BOY CAR PARK AND HAS HAD AN INJURY ON THE ICE AND IS WANTING TO CLAIM COMPO FROM BDMC, TOLD CUSTOMER WE DO NOT MAINTAIN PRIVATE CAR PARKS BUT NOT TAKING IT SAYS WAS ADVISED THAT WE MAINTAIN IT.

Gritting is normally done along Gill Bank Road, but omits 26-45, and continues along Langbar. During the icy weather this year, the road stretching from 26-45 Gill Bank Road remained ungritted, although it just off the main gritting route and would take one minute, Mr/Mrs suggests and there is a turning point for the vehicle.

There are 18 houses on this stretch of road and they are completely housebound when the weather turns and it has been suggested emergency services would not be able to access the properties if required.

COMPLAINTS ABOUT GRITTING. EAIL SENT 15/1/2021 CAN SOMEONE HAVE A WORD SUBJECT: MISUSE OF GRITTING BIN DETAILS: I WOULD LIKE TO REPORT MY NEIGHBOUR FOR MISUSING OUR ROADS GRIT BIN. IN BAD WEATHER THEY FREQUENTLY TAKE GRIT FROM THE BIN IN ORDER TO GRIT THEIR OWN PROPERTY. THEY GRIT ALL OF THE PROPERTY, THEIR DRIVE, THEIR PATH TO THE FRONT DOOR AND ALL THE WAY ROUND THE HOUSE TO THE BACK DOOR. THEIR NAME IS BARBARA & ROGER --- AT -----

*HI, I HAVE BEEN CONTACTED BY A MEMBER OF THE PUBLIC REGARDING THE LOCATION OF THEIR NEAREST GRIT BIN. THE LADY IS CALLED ----AND LIVES ----- . APPARENTLY, THE GRIT BIN IS LOCATED DOWN CROSSLEY ROAD BUT SHE FEELS IT WOULD BE BETTER PLACED ON THE OPPOSITE SIDE OF THE ROAD, WHICH WOULD BE MORE ACCESSIBLE.*

# How does City of Bradford Metropolitan District Council spend your money?



This is how each £100 is spent...



Education services  
**£45.79**



Children's social care  
**£14.52**



Public health  
**£5.42**



Environmental services  
**£4.97**



Other services  
**£2.94**



Council running costs  
**£2.29**



Cultural services  
**£2.07**



Adult social care  
**£17.67**



Planning & development  
**£1.51**



Housing services  
**£1.50**



Highways & transport  
**£1.32**

## Where does this money come from?

Councils get funding from a variety of sources including money from central government grants and other grants for specific purposes like infrastructure, fees and charges like car parking and from borrowing and investments, business rates and your council tax.

Figures compiled by the Local Government Information Unit (lgiu.org) using Revenue Account budget data from the Department for Levelling Up, Housing and Communities (21/22). This does not include other aspects of council spending such as capital investment or council housing, and figures have been rounded.



## The Future?



Road surface temperatures



Salt Barn – quality, costs



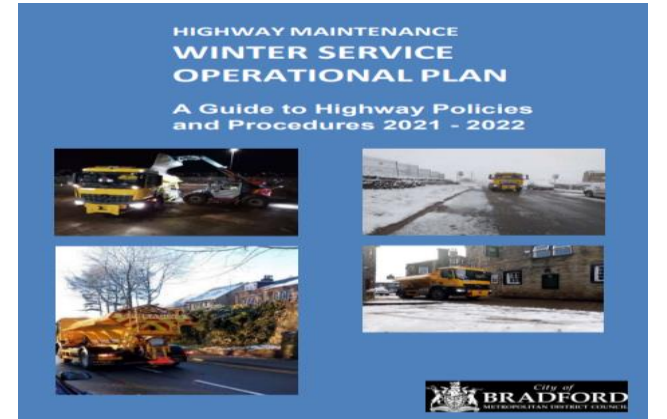
Electric Gritting fleet, environment



Create younger workforce, 3 apprentices start in August



Work more with internal/external depts



Improve communication

# WINTER SERVICE ON A PAGE

## BRADFORD IN WINTER



OVER 50% of the population of Bradford lives around and above 500 feet above sea level



WE HAVE 24,000 Tonnes of rock salt stockpiled before the start of each season



The rock salt used is from a mine in Cheshire

## BRADFORD'S WINTER SERVICE



STAFF ON CALL 24/7 from OCTOBER TO APRIL



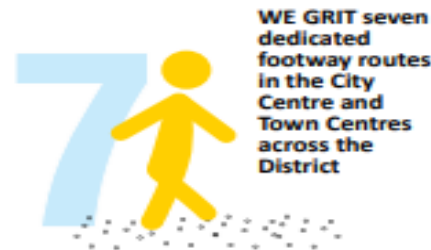
WE HAVE two dedicated weather stations in Queensbury and Silsden feeding road surface temperatures



WE GRIT 24 routes covering over 712 miles which equates to 62% of the Highway Network



WE PROVIDE near to 600 grit bins across the District



WE GRIT seven dedicated footway routes in the City Centre and Town Centres across the District

WE HAVE 24 Gritters



WE HAVE OVER 50 Drivers on stand-by

## WINTER REVIEW

In 2012-13 we completed 117 gritting runs using 22,000 tonnes of rock salt



WORST WINTER

In 2021-22 we completed 50 gritting runs using 8,500 tonnes of rock salt



LAST WINTER



On average we treat the network 60 times each winter which equates to 42,000 miles a year - almost enough to circle the world's equator twice