



ROLE OF UK COUNCILS IN ADAPTING TO CLIMATE CHANGE

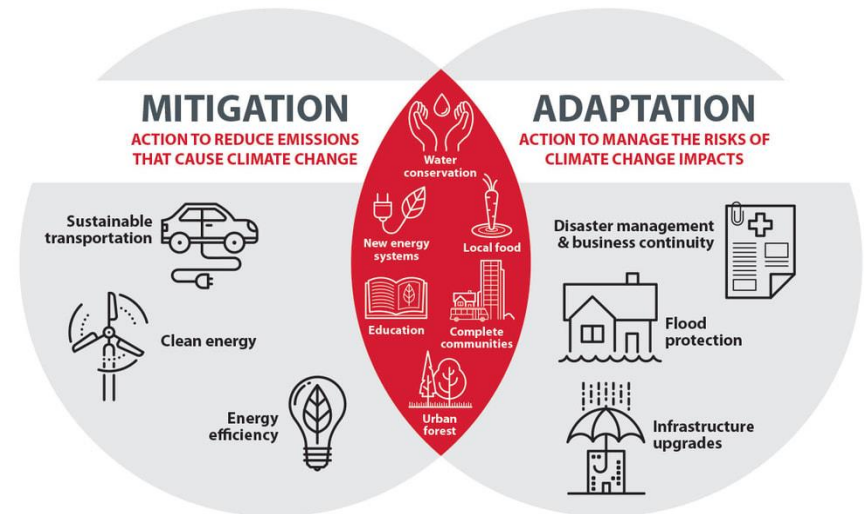


Nick Jackson

Policy Officer, Defra,

Climate Change Adaptation

Building Climate Resilience





CONTENTS

- Context – role of Govt, CCA, NAP, CSR, and responding to COVID crisis
- Vulnerability and exposure to climate change: the priority areas
- The role of adaptation and mitigation strategies and plans through local authorities
- What changes could we expect post COVID?



CONTEXT/BACKGROUND

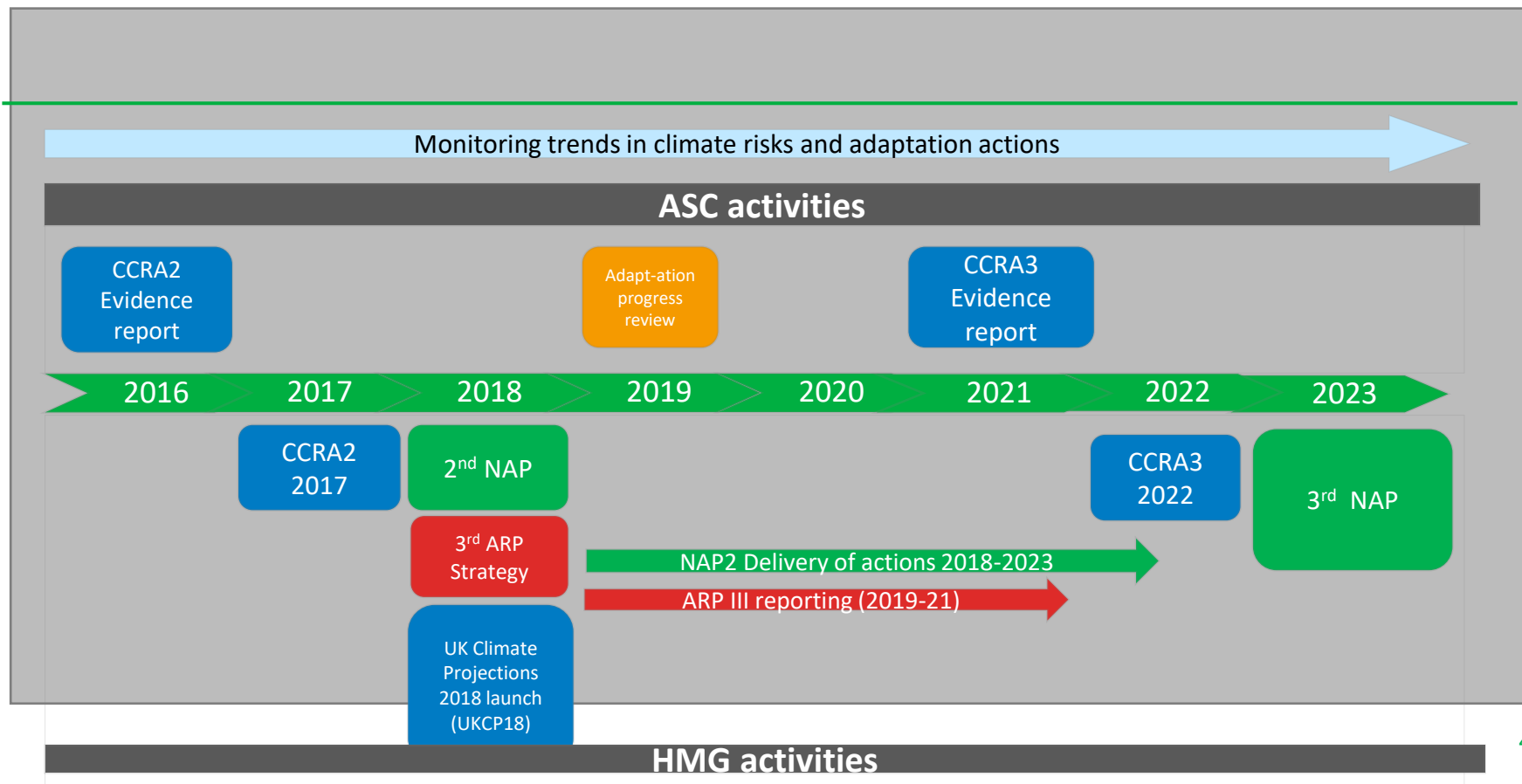
ROLE OF GOVERNMENT

- Defra lead Government policy on building domestic resilience to climate change, delivering statutory adaptation requirements set out in the Climate Change Act.
- Climate mitigation responsibilities for emissions from agriculture, waste, F-gases, forestry and land use sectors
- Adaptation policy is integrated within across government – policies and programmes should be taking climate change into account.
- Action also undertaken by local government, communities, businesses, councils, civil society and academia.





Climate Change Act (2008)





Department
for Environment
Food & Rural Affairs

National Adaptation Programme (NAP) 2018

- Building on the good work started in the first NAP
- Links with 25 Year Environment Plan which sets out government's plan for improving the environment
- Co-ordinated through cross Whitehall governance and stakeholder workshops in and out of govt

Recent Highlights

- Supporting the vital role of nature -based solutions
- Continued investment in managing floods and coastal erosion.
- Greening our financial sector
- Action by Local Resilience Forums
- Local Authority and Community engagement



Department
for Environment
Food & Rural Affairs

The National Adaptation Programme and the Third Strategy for Climate Adaptation Reporting

Making the country resilient to a changing climate

July 2018





Department
for Environment
Food & Rural Affairs

SPENDING REVIEW 2020

- CSR published in the autumn, will set out Govt spending plans for Parliament for next 3 / 4 years
- Capital budgets to be assigned from 2021/22 to 2024/5 (4 years)
- Resource budgets for the years 2021/22 to 2023/24 (3 years)
- Various SR Priorities

<https://www.gov.uk/government/news/chancellor-launches-comprehensive-spending-review>





VULNERABILITY & EXPOSURE TO CLIMATE CHANGE

National

- climate is already changing and will continue to change for decades to come, even if all countries rapidly decarbonise
- scale and impacts of UK and global climate risks are increasing.
- need to prepare for a 2°C rise in global temperature, let alone more extreme levels of warming, and to do more to adapt and build resilience.
- stats on UK winters in recent decades – 12% wetter compared with 30 yr period to 1990
- 2018: warmest summer. Climate change has already increased chance of a similar summer by 12-25%.

Local

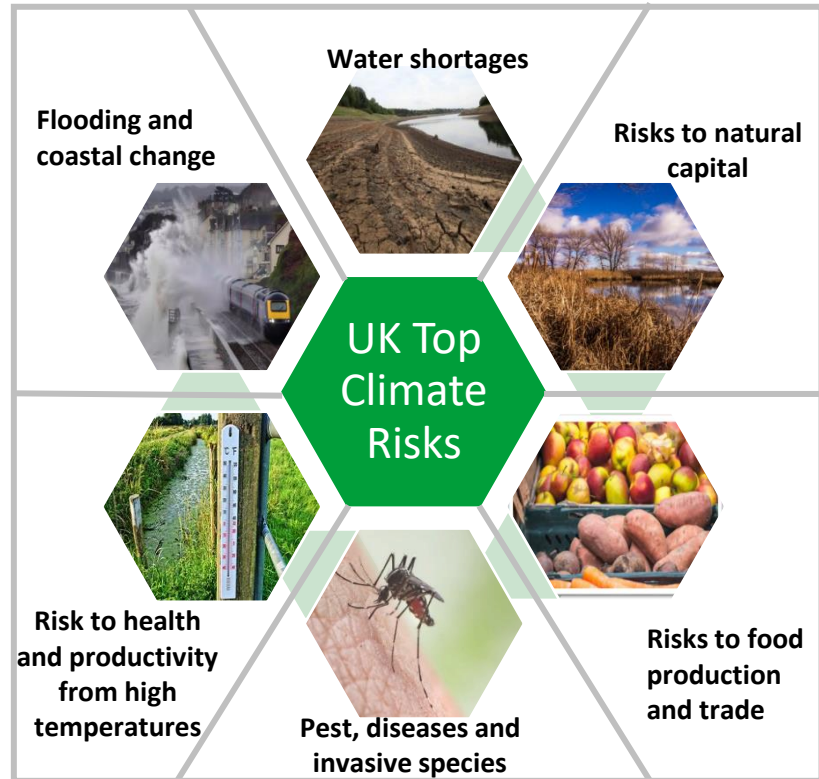
- Climate emergencies declared. LAs ahead of the game in recognising urgency in dealing with climate change
- Local climate varies – flooding and overheating are significant problems
- Extreme UK weather conditions have an impact on emergency services. Local responders and communities may need to amend plans to prepare for future reasonable worst case scenarios

VULNERABILITY & EXPOSURE TO CLIMATE CHANGE



Department
for Environment
Food & Rural Affairs

UK CCRA 2017: Priority Climate Risk Areas





STRATEGIES AND PLANS: LOCAL GOVT NATIONAL ADAPTATION PROGRAMME ACTIONS

Action	Owner	Timing
Defra will facilitate partnership working by developing 14 local natural capital plans from existing Area Integrated Plans	Defra	Beginning summer 2018
Govt will ensure that, where a case is made, govt legislation, policy and programmes are joined up – to enable and support councils to build resilience to impacts of climate change....	Defra, LAAP, LGA, ADEPT, Core Cities	Ongoing
The LAAP will respond to key govt consultations and lobby national govt ...to ensure join up on supporting councils to build resilience to impacts of climate change	LAAP, Defra, LGA, ADEPT, Core Cities	Ongoing
The LAAP will support improved resilience for councils by providing guidance for LAs that outlines priorities and minimum requirements for improved resilience	LAAP, Defra, LGA, ADEPT, Core Cities	Ongoing

STRATEGIES AND PLANS: LOCAL GOVT NATIONAL ADAPTATION PROGRAMME ACTIONS

Action	Owner	Timing
The LAAP will finalise an approach to demonstrating level of implementation of adaptation principles across LAs, continue a strong collaborative approach on adaptation between central and local govt	LAAP, Defra, LGA, ADEPT, Core Cities	By 2019
Core Cities (in partnership with Defra) will influence adaptation ambitions and delivery at local level through its Low Carbon Energy and Resilience policy hub through formalising a joint Core Cities/Defra working group to collaborate on air quality and promoting adaptation in cities...	Core Cities, Defra, GLA	



STRATEGIES AND PLANS ADAPTATION ACTION BY LOCAL AUTHORITIES

- Aware that a significant number of LAs & LG organisations have declared climate emergencies and are developing action plans
- welcome sign as LAs endeavour to plan ahead and invest for the future
- Strategies and plans, with focus on preparation, can help planning and policy development, QA (eg. water) and risk manage (floods)
- promotion of SuDS through Cambridge's Local Plan is projected to result in significant savings for council services, homeowners and industry



STRATEGIES AND PLANS ADAPTATION ACTION BY LOCAL AUTHORITIES

- **Climate Ready Clyde** is a cross-sector initiative to create a shared vision, strategy and action plan for adapting Glasgow City Region.
- Collaboration with Adaptation Scotland producing a toolkit in 2019 for assessing climate risks for built environment and infrastructure projects
- economic assessment of costs/benefits of GCR's climate risks and opportunities was produced in 2019 for policymakers, managers and practitioners.

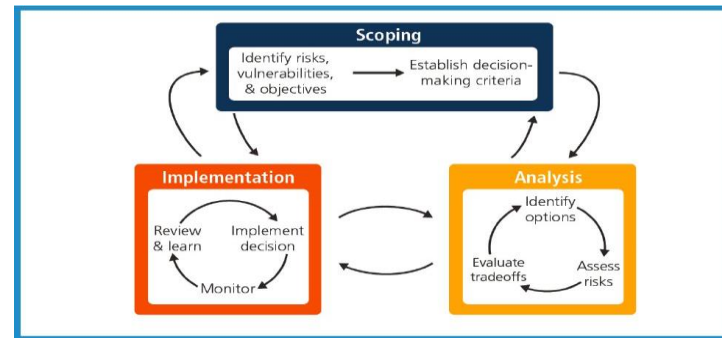




STRATEGIES AND PLANS

Adaptation action by Local Authorities

- **Kent CC** are developing an adaptation catalyst tool to help with planning and implementing adaptation. Also revising their Severe Weather Impact Monitoring System tool to make more user friendly and flexible



- **Hants CC** decision making tools for resilience & mitigation to be launched in Sept. Enable impact assessment key decisions on climate resilience and carbon emissions – and will become a mandatory component of our key decision reports. I
- **Staffordshire Moorlands DC** are developing a Green Infrastructure Delivery Plan – published in Sept
- **Cornwall Council** published (2019) Climate Change Action Plan that sets out in detail their plans for climate change mitigation and adaptation. It provides multiple avenues and ideas for local climate action laid out on their website.



THE FUTURE?

Social/National

- COVID influencing ways of working – lack of human contact/WFH
- different and less secure internet connections
- collaborative working between central and local government – co-creation
- Green recovery



Global

COP26.

action
No



- 2021 big year for global climate
 - hosted in Glasgow in Presidency
- adaptation and resilience key priority
- A&R of growing political and material

importance





And finally.....

- ADEPT and LAAP guidance <https://www.adeptnet.org.uk/system/files/documents/Good%20Practice%20Guide%20ADEPT%202019f.pdf>
- ADEPT blueprint preparing for climate change and green recovery

<https://www.adeptnet.org.uk/system/files/documents/Coalition%20Climate%20Asks%20Doc%20June%202020.pdf>

- Looking to continue engagement and delivery on resilience with LG sector
- Thank you
- Mailbox climate@defra.gov.uk or nick.jackson@defra.gov.uk