

Identifying new spaces to promote and enhance opportunities for biodiversity – cemetery nature reserves

- The origins of Linthorpe Cemetery & Nature Reserve
- Creating spaces for nature
- The successes achieved and future proposals

Marcus Vickers, Bereavement Manager, Middlesbrough Council.

Middlesbrough Council Bereavement Services Overview

- **Teesside Crematorium**

- *2000-3000 Cremations per year*
- *2 Chapel facilities for services*
- *Memorial sales*
- *Chapel of Remembrance*
- *Books of Remembrance*
- *Garden of Remembrance*

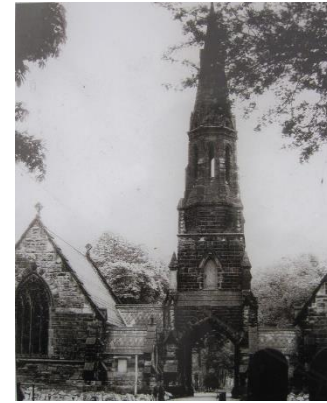
- **6 Cemeteries:**

- *Acklam Cemetery*
- *Linthorpe Cemetery & Nature Reserve*
- *St Josephs Cemetery*
- *North Ormesby Cemetery*
- *Thorntree Roman Catholic Cemetery*
- *Thorntree (Protestant) Cemetery*
- *350-425 Burials per year*
- *Memorial Safety Testing*
- *Enhanced Horticulture (Cem & Crem)*

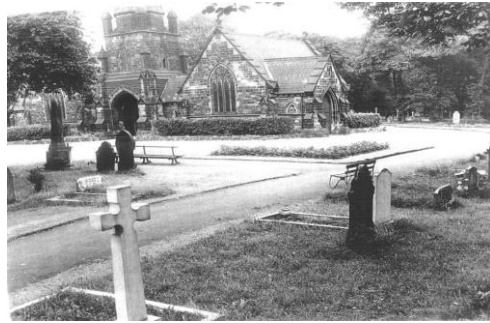
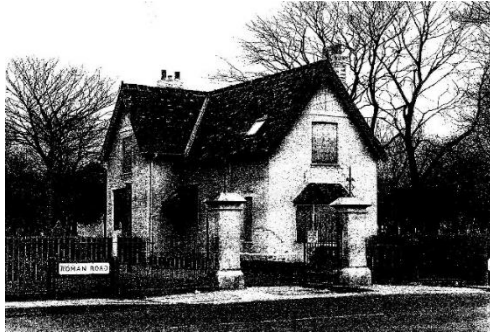


The origins of Linthorpe Cemetery & Nature Reserve

- Used by Quaker community for Burials since 1668 -1745.
- 1856 used again by Quaker and Jewish community
- 1868-9 public health & drainage concerns in existing town cemetery, concept of new cemetery began, area prepared for burials for wider town use
- December 1869 first burials of 'non-conformist' on un-consecrated land
- 1871 Cholera epidemic & fever hospital established on neighbouring hospital ground
- Consecrated in 1873 & Cemetery chapel established
- 1890 Cemetery extended and lodge established
- 1980's full to new grave interments
- Approx. 50 acres, approx. 49k graves (*Jewish, Quaker, Christian, Public/Common, Woodland, Reused graves*)



The origins of Linthorpe Cemetery & Nature Reserve



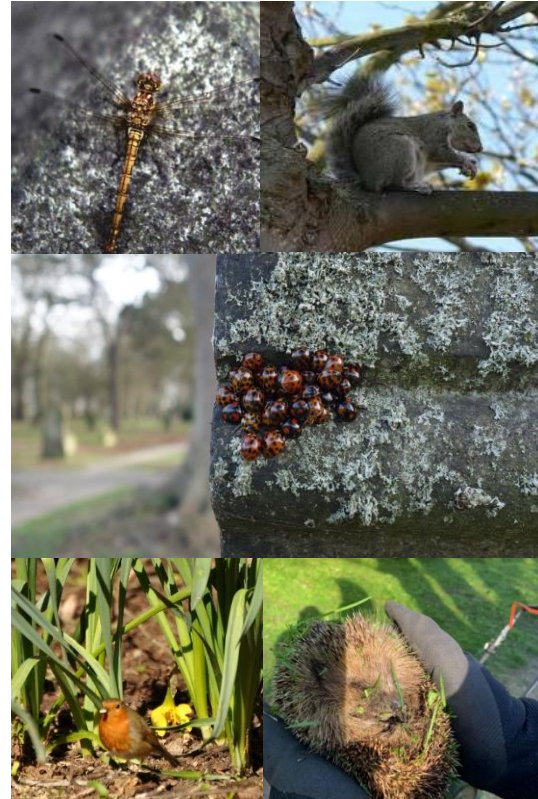
The origins of Linthorpe Cemetery & Nature Reserve

- Anti-social behaviour and incidents of criminal damage lead to a decline in the cemetery
- Decline in cemetery lead to small group of volunteers wanting to take pride in their local cemetery, heritage and nature Overtime the group grew.
- Overtime the group grew and the Friends of Linthorpe Cemetery was officially formed.
- Nature Conservation Management plan established and dedicated Nature Reserve status, and Green flag status obtained
- Heritage Restoration and Nature Reserve status programme



Creating spaces for nature

- All of the cemetery a dedicated Nature Reserve
- Ecology survey's to understand existing wildlife, and how to support
- Summer Meadow:
 - *Section dedicated for alternative grass cutting regime*
 - *Planted with cowslips, low growing herbs & others*
 - *Mowed once a year, cuttings raked & composted*
 - *Edge and walkway only mowed during the year*
- Woodland Meadow:
 - *Utilising existing established tree's to enhance further other the years.*
 - *Tree's planted annually (incl. as part of events e.g. queens green canopy, holocaust memorial day etc.)*
- Access to war graves, graves of significance or where requested (from families).



Creating spaces for nature

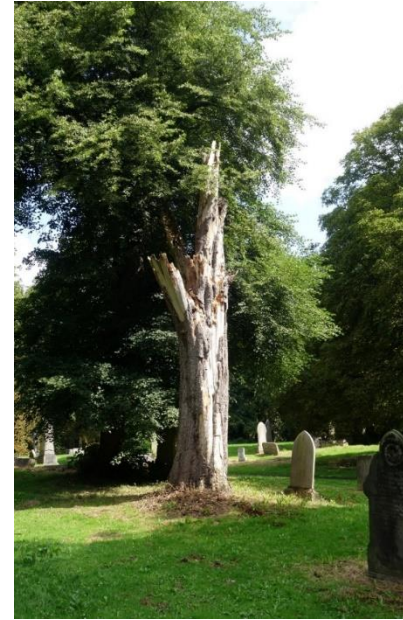
- Installation of various wildlife habitats – bats, owls, Birds, Hedgehogs, Bee's
- Tree Maintenance:
 - Damaged, Fallen Trees etc. – tree cut back to trunk, logs, branches etc. left in place for habitats (excl. in certain sections or if blocking walkways, on memorials etc.)
- No chemical use – weedkiller, pesticides etc.
- Disturbance of nests – No trimming or strimming of hedges, re-wilded areas not between March to September. Any additional cutting for graves where access required , noted for consideration following season.



Creating spaces for nature



Creating spaces for nature



The success achieved and future proposals



- Dedicated Nature Reserve
- Successive Annual Green Flag status
- Heritage Funding – Restoration works
- Established Cemetery Management Plan – working together
- 10k Snowdrops – child bereavement
- Hedgerow establishment and planting
- Planting 5k Daffodils, 2k Cowslips, 4k Crocuses
- Sensory flower bed
- 7 Flower beds
- Cross of Sacrifice Rose Bed
- Tree planting
- Community Engagement & education: Schools, Nature Walks, History walks, Annual Memorial Services, Planting events etc.
- Heritage: promotion, genealogy, Memorial restoration
- Digital heritage walk (MyHuntee App)
- Increased number of burials and presence within the Cemetery



The success achieved and future proposals

- Continue to work together to the management plan
- Digitise all records of the cemetery with a new system provider (*plotbox*)
- QR code digitising – Graves of significance
- Memorial & planting community programme
- Probation services – support and work within the cemetery grounds, training upskilling
- Groundworks – relationship & skills development for NEET youths
- Increase in number of Burials in Linthorpe Cemetery
- Increase in number of Natural Burials in Linthorpe Cemetery completed

Other Cemeteries:

- Alternative Cutting routine – edges left to grow & strimmed once a year, meadow flower planting within cemetery & gardens
- Ecology Survey in all cemeteries
- Establish St Josephs & North Ormesby as Nature reserve
- Habitat installation in cemeteries
- Natural Burial options to be made available in all cemeteries
- Wildflower planting/seeding





**FRIENDS OF
LINTHORPE
CEMETERY
& NATURE
RESERVE**





Any Questions?

