

9 September 2020

Local Delivery of Net Zero

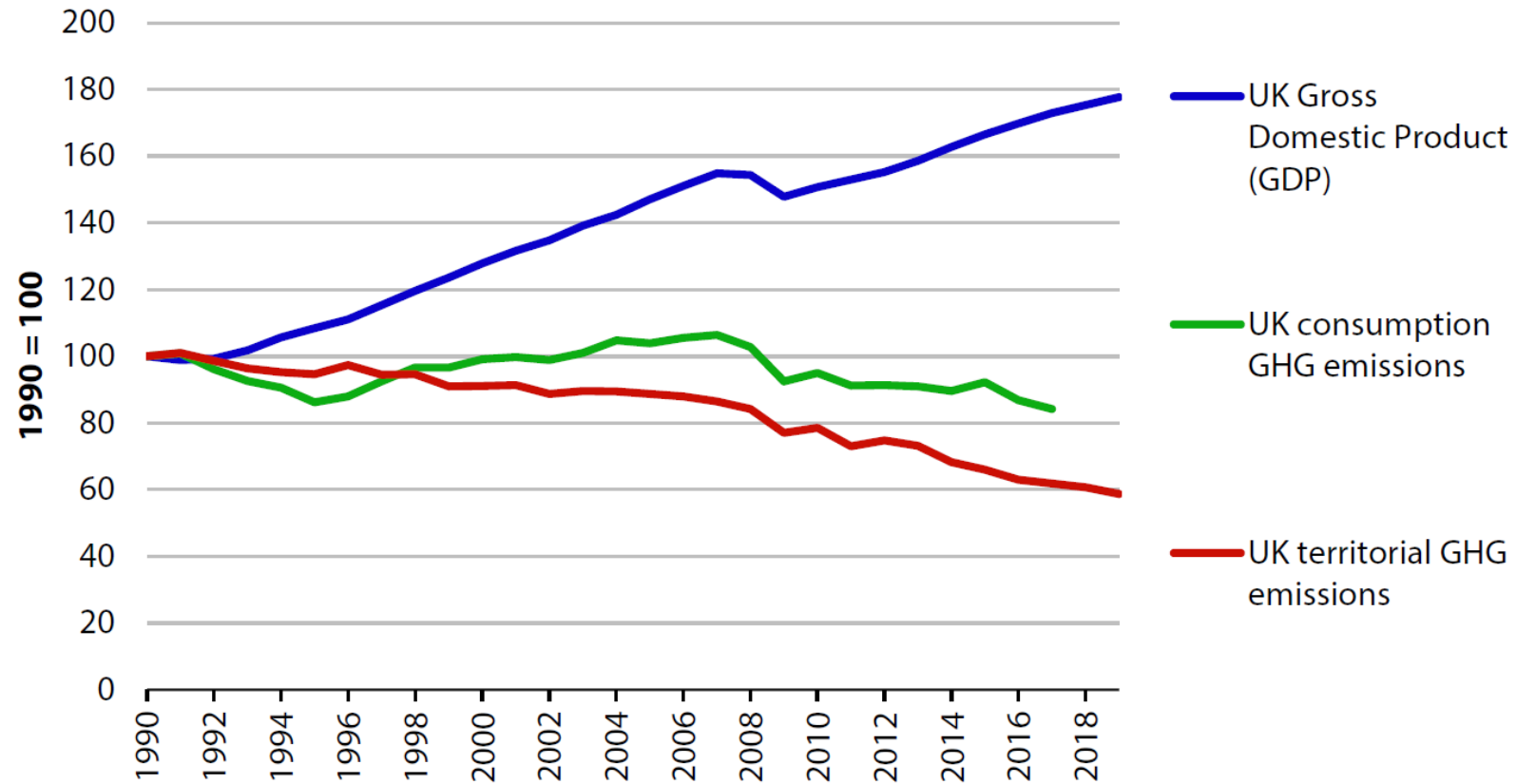
APSE Climate and Ecological Emergency Online Seminar:
Building Back Better: Building Back Greener

Louise Marix Evans

Purpose of this presentation is to explain:

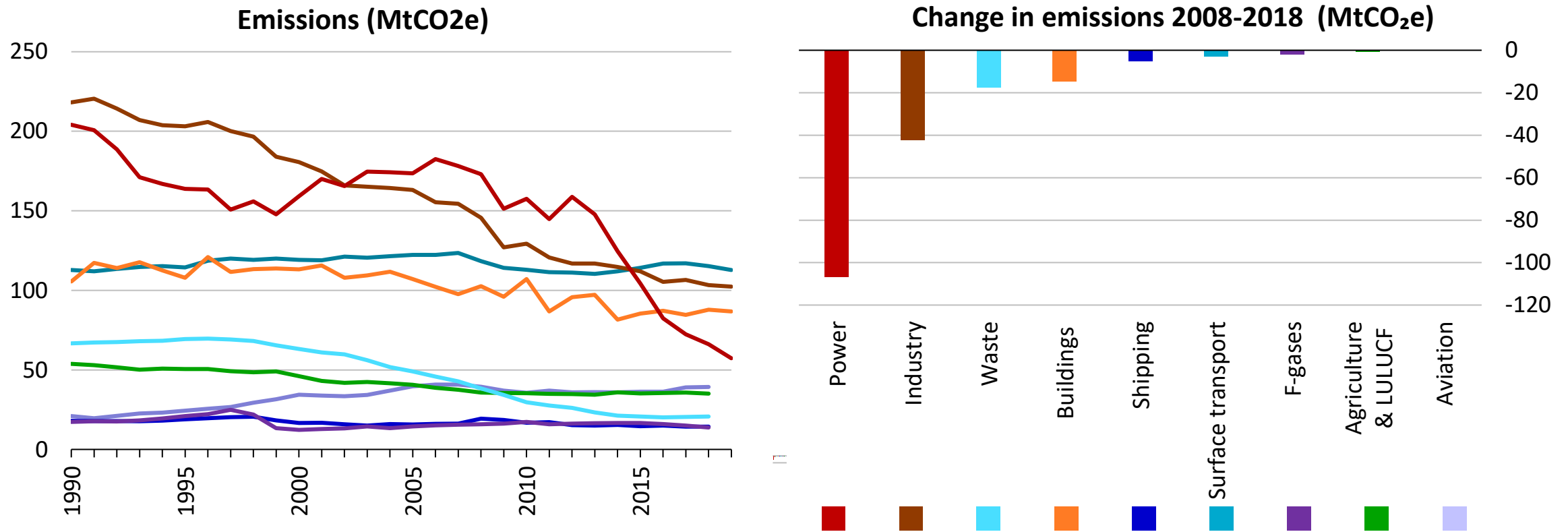
- 2020 Progress report and sixth carbon budget
- How the CCC is looking at local delivery
- Priority actions that Local Authorities should be taking
- What support councils say they need from government

Greenhouse gas emissions vs GDP over time



Source: BEIS (2020) 2019 UK Greenhouse Gas Emissions, Provisional Figures; BEIS (2020) 2018 UK Greenhouse Gas Emissions, Final Figures; ONS (2020) Gross Domestic Product: chained volume measures: Seasonally adjusted £m; Defra (2019) UK's carbon footprint; CCC analysis

UK greenhouse gas emissions by sector 1990-2019



Source: BEIS (2020) 2019 UK Greenhouse Gas Emissions, Provisional Figures; BEIS (2020) 2018 UK Greenhouse Gas Emissions, Final Figures

Cross-economy coordination

Net Zero as headline goal

Cabinet Committee set up

HMT Funding Review underway

UK ETS will reflect Net Zero

Climate Assembly

- Progressed
- In development
- Policy gap

Sectoral policy

Transport

≤2035 EV switch

Transport strategy in development

HGVs

Industry

Some industry funds

CCS plans

No industry or Hydrogen strategies

Buildings

Future Homes

Heat and Buildings strategy must transform heating

Power

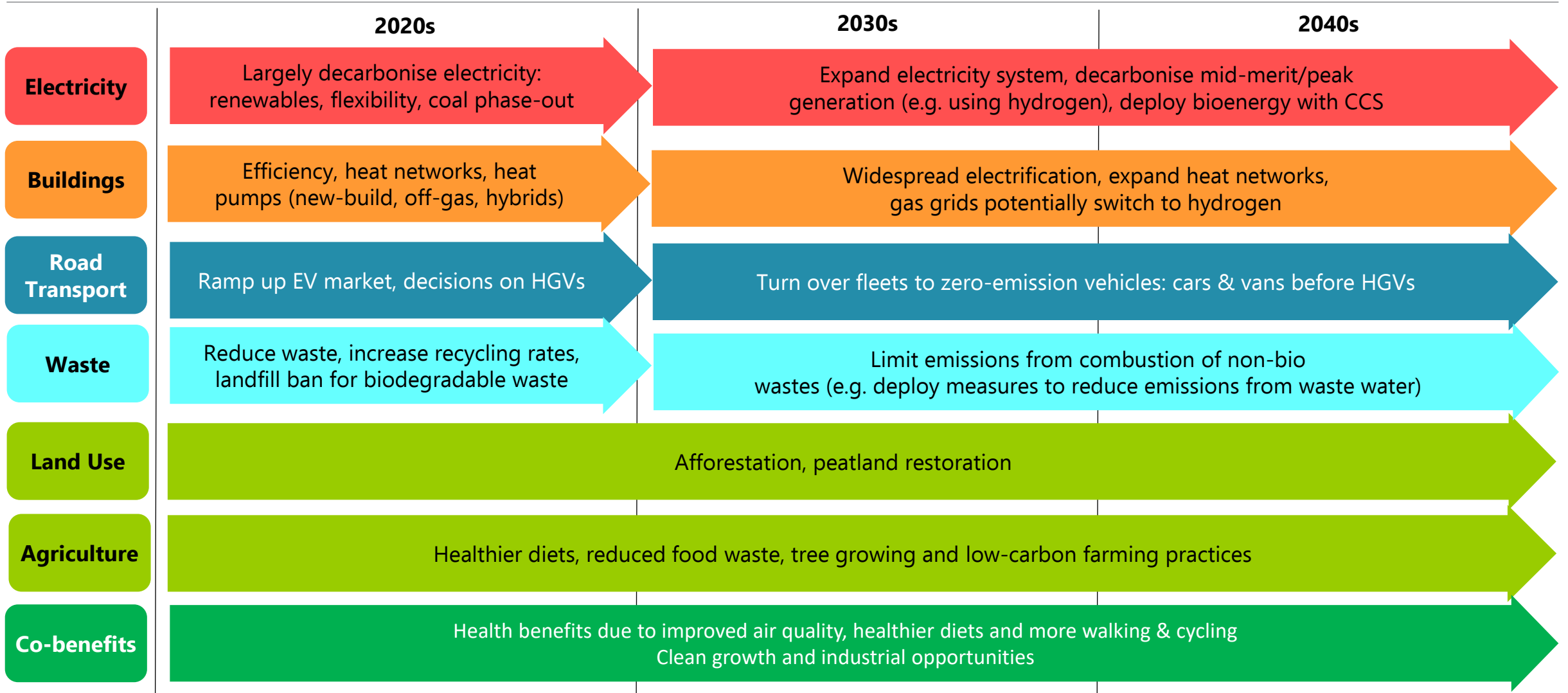
Offshore wind, onshore wind & solar

Flexibility for energy system

Agriculture and land use change

Agriculture & Environment Bills in development

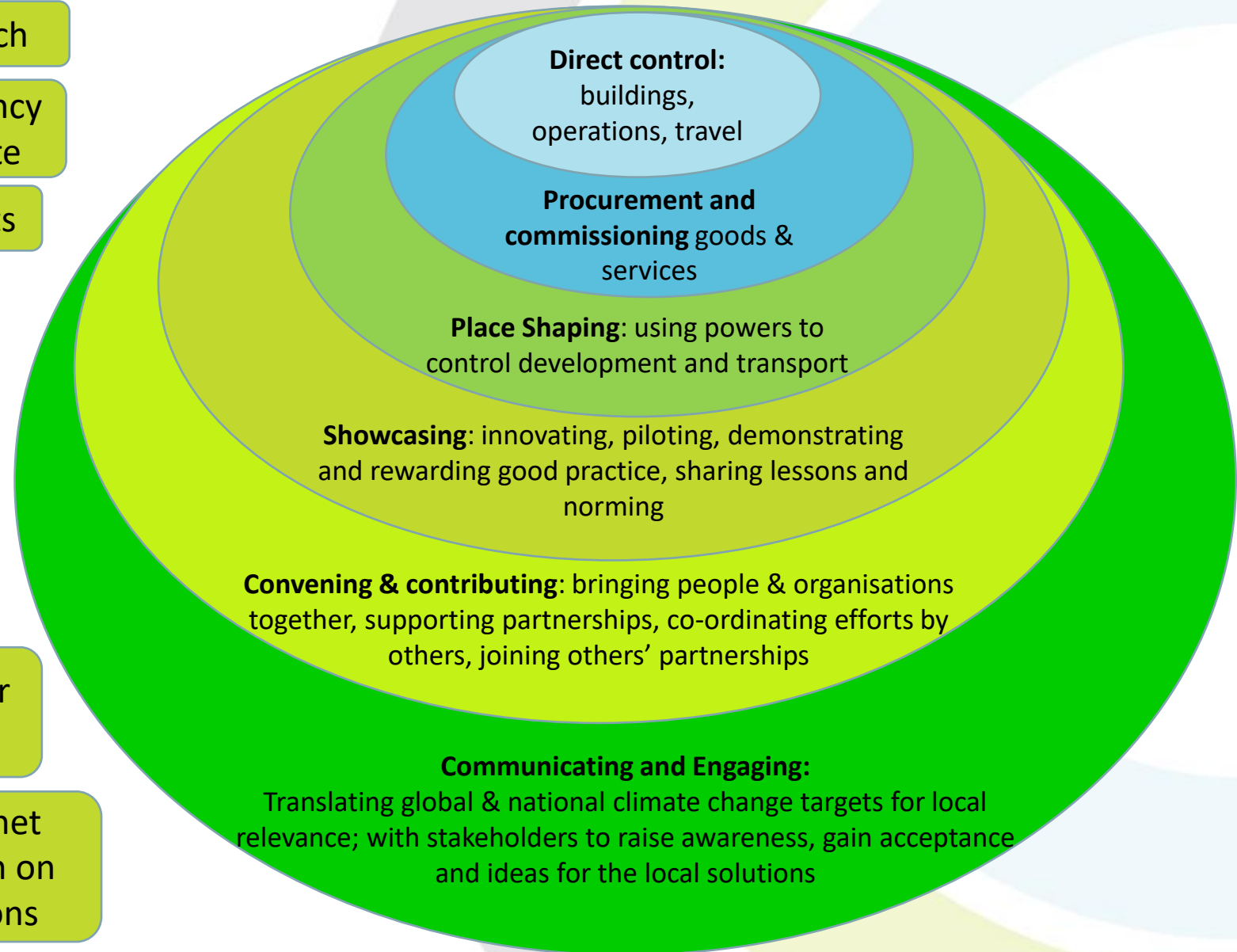
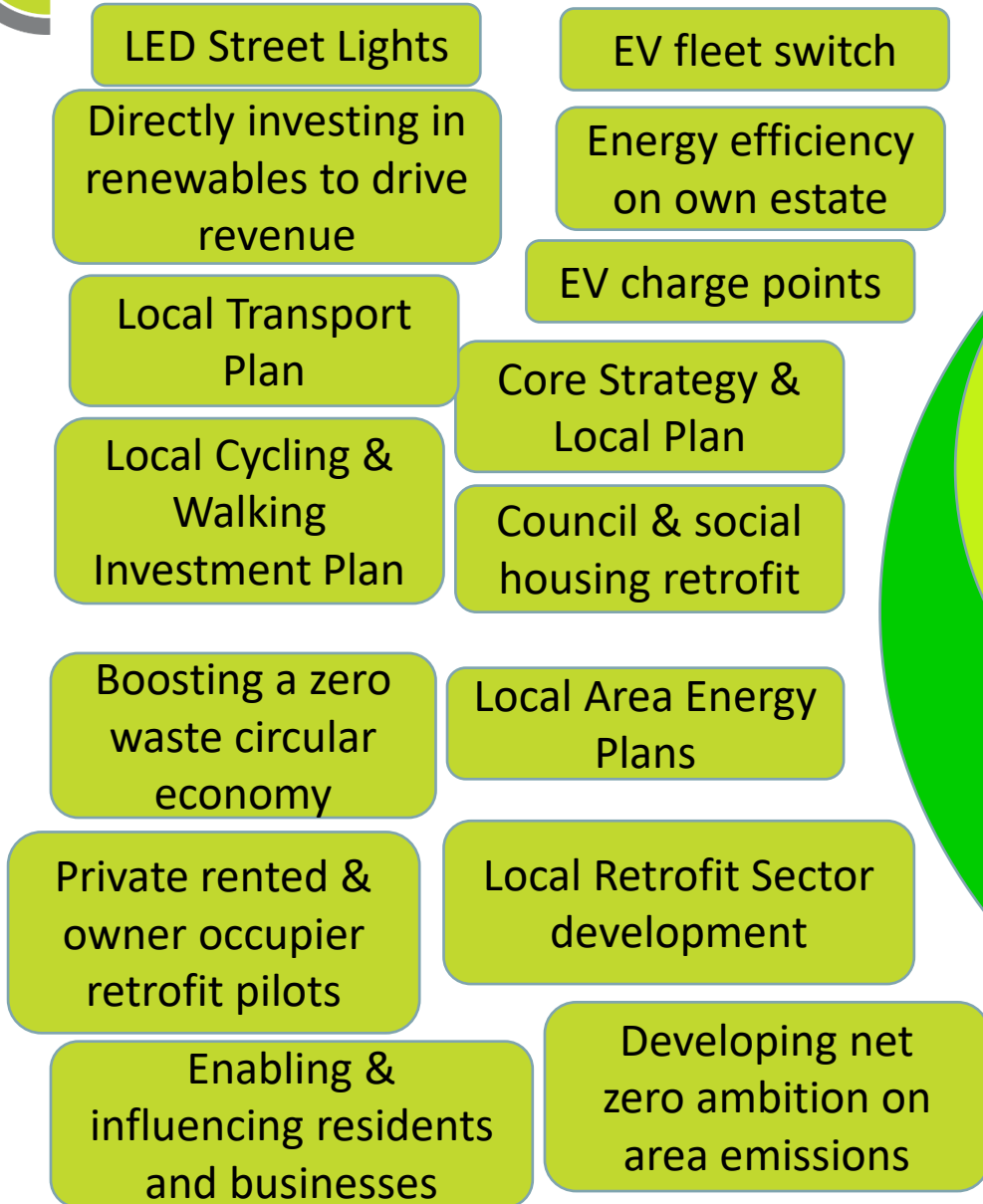
Funding for woodland & peat



Areas where local-level policy has a key role to play – misses leadership/convening/influencing role

	Nationally driven	Locally driven
Buildings	<ul style="list-style-type: none"> • Building regulations • National Planning Policy f/wk & guidance • National retrofit funding programme • Introduction of Building Green Passports 	<ul style="list-style-type: none"> • Local Planning Authority: Local Plan – net zero hooks • Local area energy plans (LAEPs)/heat mapping for heat decarbonisation (e.g. heat pumps, low-carbon heat networks, hydrogen) gas phase out by 2033? • No gas boilers in new homes from 2025 • Energy Efficiency retrofit in social and council homes • Energy efficiency in private rented sector ? • Energy efficiency retrofit supply chain supported ?
Transport	<ul style="list-style-type: none"> • All car/van sales electric by 2035 at latest • Transport infrastructure funding from DoT 	<ul style="list-style-type: none"> • Transport planning, walking & cycling infrastructure • EV charging infrastructure new developments & on-street-parking) • Switch to ultra-low emission buses/taxis through licensing or clean air zones
Waste	<ul style="list-style-type: none"> • No bio-degradable waste to landfill by 2025 • 70% recycling rate by 2030 at latest 	<ul style="list-style-type: none"> • Mandatory separation of waste by 2023 • Alert to rising emissions from unabated EfW facilities • Waste minimisation schemes incl food waste reduction
Landuse	<ul style="list-style-type: none"> • 30,000ha afforestation annually 	<ul style="list-style-type: none"> • Tree planting including on county farms & own land

Local authority influence & role in delivering Net Zero



Infrastructure investment

- Housing retrofits; small business energy efficiency; district heating
- Local area energy plans & green building passports
- Electricity, CO₂, H₂ networks
- EV charging
- Flood defences
- Circular economy

Supporting people

- Reskilling & Retraining
- Nature recovery
- Remote working & e.g. remote NHS
- Cycling and walking

Driving the pace of transition

- Carbon taxes
- ‘Green strings’ for bail-outs
- Science & Innovation
- Climate risk assessments

Taking a global lead

- UK as UN lead on “Inclusive and sustainable recovery”

What is needed from government?

- **Consistent net zero compliant policy, co-ordination between all government departments**, remove barriers and contradictions especially in National Planning Policy
- Communication: delivery framework & routemap – outcome-based with flexible options for locally appropriate delivery – **pioneer LAs can go faster** – align to LA decision timelines
- Duty to produce low carbon area plans with common **reporting framework** & resources
- **Stronger focus on carbon reduction & co-benefits in business cases and financial appraisal**
- Support for **Local Area Energy Plans** and capacity building/training, new powers?
- **Large scale non-competitive long-term investment** in retrofit, heat decarbonisation infrastructure, public transport and flexibility to combine and deploy budgets locally
- Support to **resource** and develop **skills and capacity** within local authorities/groups of smaller LAs and to **share lessons** (not just nice case studies)
- OLEV is a good start with EST **local authority support**, this is needed for housing retrofit and heat to drive delivery and put information in one place

www.theccc.org.uk



[@theCCCuk](https://twitter.com/theCCCuk)

louise@lmarixevans.co.uk