

WLC Open Space Strategy

West Lothian Council Open Space Strategy

“Our Journey”

Colin Bell, Open Space & Cemeteries Manager

WLC Open Space Strategy

WLC Policy Context

- **Strategy fulfils a requirement of PAN 65 by:**
 - Helping inform / support other policy initiatives
 - Community Plan
 - WLC Local Plan
 - West Lothian Corporate Plan
 - Parks & Open Space Management
 - Local Biodiversity Action Plan
 - Local Transport Strategy
 - West Lothian on the Move
 - Access Strategy
 - WL Residential Development Guide
 - Supports broader agendas such as health & well-being, social inclusion & economic regeneration



WLC Open Space Strategy

How did we set about delivering the strategy ?

- Set up a steering group – with representatives from various council services.
- Project Brief outlining our requirements prepared.
- Appointed consultants IF to progress OS audit and strategy.
(allotment strategy latterly instructed)
- Set up a bespoke GIS database.

WLC Open Space Strategy

There were six main stages :-

1. Open Space Audit - over 800 parks, open spaces and school grounds. (areas over 2000 square metres).
2. Recording data – on each of the 800 sites.
3. Consultation – with internal & external stakeholders.
4. Town & villages settlement review – how well is each settlement served ?
5. Strategic Framework – defining a vision & series of objectives.
6. Action Plan.

WLC Open Space Strategy

Audit - Database

Sitename Bridgend South Park 354838		Main Cat Public Parks and Gardens	Sub Cat Local Park				
Eastings 304216 Northings 675364 Street Auldhill Road Locality Town Bridgend Postcode Type Local Authority Managed by Owned by School Association None Access Area m2/Ha/Acres 16,715 1.67 4.13 Perimeter metres 796 Record Created Date 27 November 2003 Record Updated Date 27 November 2003 Operator West Lothian Leisure Bulldate 1945 - 1969 Car Park <input type="checkbox"/> No of Parking Spaces Parking Type Ramped or At-level Access <input type="checkbox"/> <input type="checkbox"/> Disabled Changing Disabled Toilets <input type="checkbox"/> <input type="checkbox"/> Designated Parking	GROUND LEVEL Blaes <input type="checkbox"/> Concrete <input type="checkbox"/> Grassland Cut Managed <input checked="" type="checkbox"/> Grassland Rough Managed <input type="checkbox"/> Grassland Unmanaged <input type="checkbox"/> Landscaped Earth Features <input type="checkbox"/> Paved or Cobbled <input type="checkbox"/> Soft Tiling <input type="checkbox"/> Tarmac <input type="checkbox"/> Water <input type="checkbox"/> VEGETATION Bog/Marshland <input type="checkbox"/> Flower Beds <input type="checkbox"/> Formal Planting <input type="checkbox"/> Scrub <input type="checkbox"/> Shelter Belt(s) <input type="checkbox"/> Standard Tree Planting <input type="checkbox"/> Woodland Coniferous <input type="checkbox"/> Woodland Deciduous <input type="checkbox"/> Woodland Mixed <input type="checkbox"/> ACCESS Formal Path(s) <input type="checkbox"/> Track(s) <input type="checkbox"/>	INSTALLATIONS Benches <input type="checkbox"/> Bins <input type="checkbox"/> Climbing Wall <input type="checkbox"/> Lighting <input type="checkbox"/> Monument/Statue(s) <input type="checkbox"/> Play Area <input type="checkbox"/> Fencing <input type="checkbox"/> Raised Bed(s) <input type="checkbox"/> Signage <input type="checkbox"/> Storage Hut(s) <input type="checkbox"/> TOID: Changing Avail None <table border="1"> <thead> <tr> <th>Name</th> <th>Sports Played</th> </tr> </thead> <tbody> <tr> <td>Pitch 1</td> <td>Football 11 a side</td> </tr> </tbody> </table>	Name	Sports Played	Pitch 1	Football 11 a side	SITE DESCRIPTION Large grassed open space to the rear of Bridgend Primary School, with very few features apart from a football pitch and a couple of benches. The open space wraps around the school, and is accessible at the north east corner. The site is set within an agricultural landscape on the southernmost corner of Bridgend Village. There appears to be a track connecting the green space to the fields to the west (may be a short cut used by school children).
Name	Sports Played						
Pitch 1	Football 11 a side						
PROBLEMS - Very little use is made of the space, apart from football and sports events at the school. - The site is not lit and not overlooked by houses, so security issues may be a problem (school grounds are fenced). Date of specific points 16 June 2004	OPPORTUNITIES - Provide path/ track links to the residential areas to the north, via the field boundaries, to provide routes to the school. - Explore the path linkages to the wider countryside path network. Date of specific points 16 June 2004	ELEMENTS REQUIRING MONITORING - Ongoing maintenance of the site. - Security/ safety issues. Date of specific points 16 June 2004	RECOMMENDATIONS Date of specific points 16 June 2004				
OPEN SPACE RANKING Diversity of Use 2 Legibility 3 Adaptability 3 Accessibility 3 Education Value 2 FUNCTION TOTAL 13 Security 2 Maintenance 3 Areas of Neglect 3 Track Path Condition 2 No of Entry Points 3 CONDITION TOTAL 13 Material Quality 2 Character Identity 2 Signage Interpretation 3 Biodiversity 2 Continuity 2 QUALITY TOTAL 11 Frequency of Use Low Future Req Investment Low Priority for Maintenance Med Timescale for Investment Long Priority for Action Low		OVERALL TOTAL 37					
MAP		PHOTO					
SITE NOTES		CLOSE					

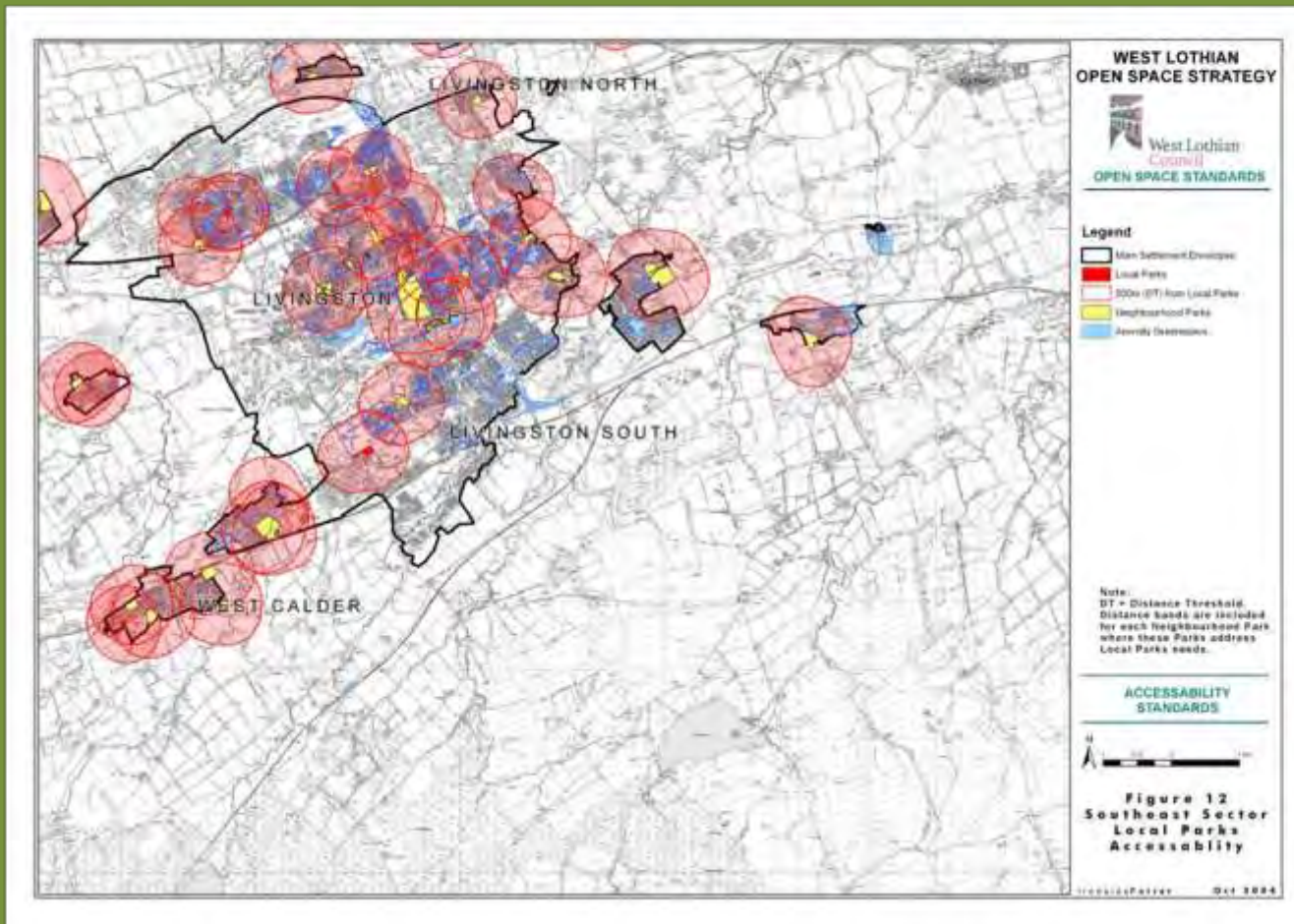
WLC Open Space Strategy

Audit - Typology

	Public Parks & Gardens	✓	Country Parks / District Parks / Neighbourhood Parks / Local Parks
	Private Gardens & Grounds	✗	
	Amenity Greenspace	✓	Landscaped Areas (Housing Open Space / Business Parks / Road Verges / areas adjacent to Buildings)
	Playspace	✗	(Parallel study)
	Sports Areas	✗	(Parallel study)
	Green Corridors	✓	Canal / Rail / River corridors / Designated strategic path routes
	Natural / Semi Natural	✓	Woodlands / Mixed grasslands / Wetlands
	Functional Greenspace	✓	School Grounds
	Civic Space	✗	

WLC Open Space Strategy

Minimum Standards - Accessibility



WLC Open Space Strategy

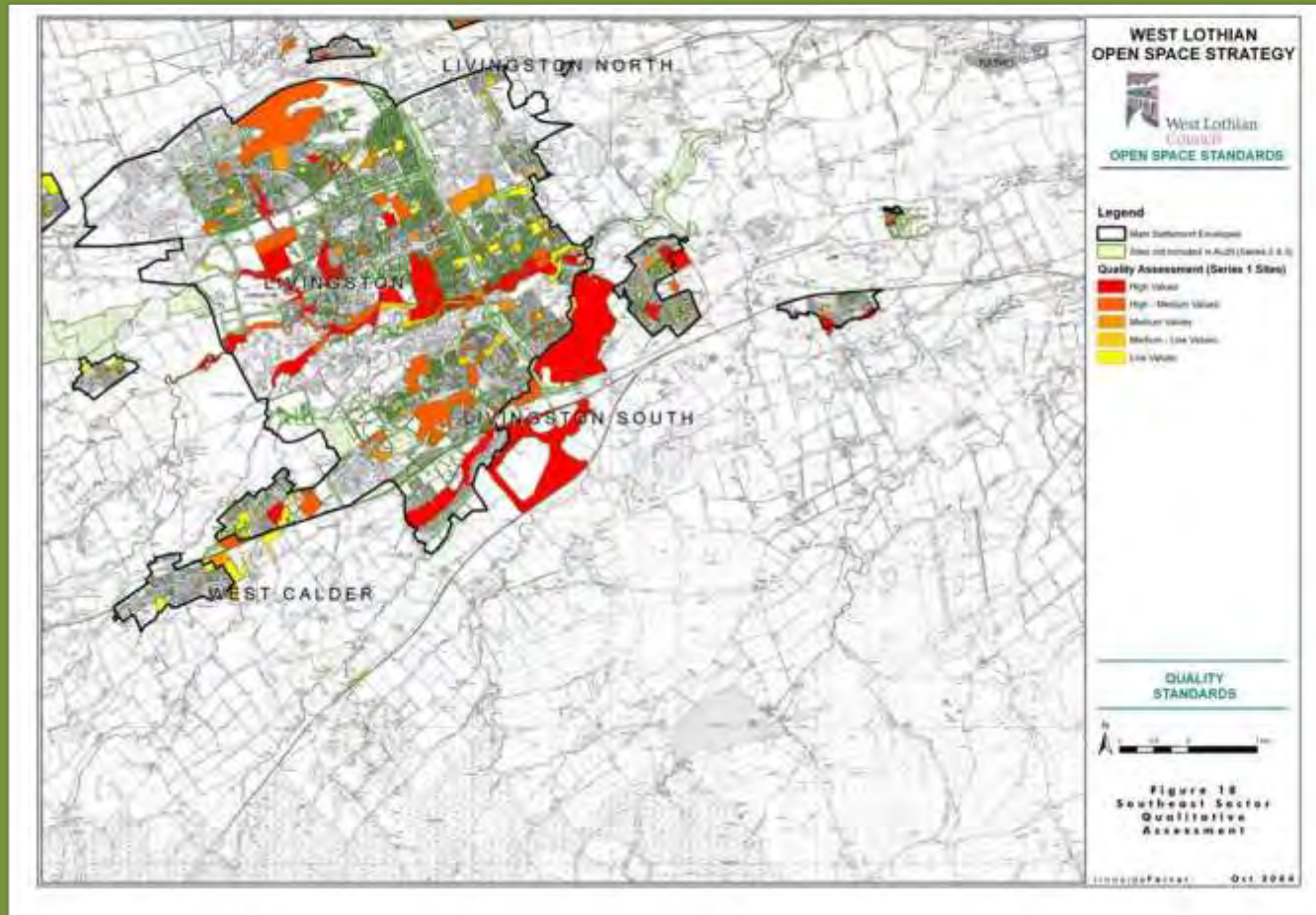
Minimum Standards

- Quality

PAN 65 Category	Sub-category	Minimum Quality Standard
		<ul style="list-style-type: none">• Offer diverse recreation use• Offer facility for formal/ informal sport• Offer diversity of habitat/ landscape• Provide Toilet facilities• Provide Changing facilities• Provide equipped play facilities (NEAP)• Provide seating/ litter bins• Provision of paths/ access• Lit core path network• Receives regular maintenance• Car park provision• Formal landscape features

WLC Open Space Strategy

Minimum Standards - Quality



WLC Open Space Strategy

Workshop 1 (June 2004)

- **Attendance**

- SNH / WLC / Paths for All Partnership / HEBS / CSFT / Greenspace Scotland / Sport Scotland

- **Content / discussion**

- Top 10 priorities - sticker exercise
- Open space failings / issues of provision
- West Lothian vision for the open space resource
- Emerging themes / topics
- Key delivery mechanisms
- Role of the community



Informed the Aims and Objectives of the Strategy

WLC Open Space Strategy

Public consultation



WLC Open Space Strategy

What were the Strategy conclusions?

Key findings

- WLC has a good hierarchy of OS that is broadly capable of meeting community needs in terms of quality, quantity and accessibility.
- Quality is a key issue in delivering functional, safe attractive OS that is fit for purpose.
- Securing best value needs to include detailed site & community need assessments, addressing quality, quantity and accessibility.

WLC Open Space Strategy

And the benefits of a strategic approach to open space

- Committee process.
- Capital programme funding allocation in five year capital plan (play areas, woodlands, drainage, sports pitches & pavilions, footpaths, drainage park and cemeteries)
- Funding from SNH for West Lothian's first Community Greenspace Officer.

WLC Open Space Strategy

Our journey continues:-

- ❖ 2005 OSS refreshed in 2009. (took into account all the improvements made)
- ❖ 2015 refresh currently ongoing - includes:-
 1. Meeting with WLC steering group officers
 2. Review what OS still to be audited
 3. Review green network plans.
 4. Review need for SEA.
 5. Audit updates audit cemeteries and country parks.
 6. Re-write OSS with a review of current format.
 7. Contact WLC officers to gather topical information on, war memorials blue network paths strategy and feature in OSS.
 8. Explore OSS links to biodiversity and sustainability.
 9. Review graphic style and presentation of current GIS drawings.
 10. Prepare a Cemetery strategy and update Allotment strategy.
 11. Develop a revised action plan -

The Open Space Strategy will be implemented through the Action Plan which provides detailed tasks to be achieved and the organisations / lead partners who will be responsible for taking the actions forward. It will be undertaken over a 5 year period but will require updating as changes, resources or demand occur.

WLC Open Space Strategy

Now in the process of preparing for the next capital programme
2017 / 2018 – 2026 / 2027.



WLC Open Space Strategy

Lessons learnt

- Need for a strategic approach
- Need for a plan
- Working together
- Project planning
- Take the first step! Don't give up!
- Celebrate milestones achieved along the journey!



WLC Open Space Strategy

The outcomes

Join me on a whistle stop tour of just a few of West Lothian's successfully completed projects

.....Open Space Strategy....,
what's been achievedfrom
play areas to cemeteries and
much more in between !



1. Alderstone Road Housing



2. Eliburn play park



3. Wester Inch public art



4. Linlithgow Loch



5. Murieston



6. A89 Cycle path



7. Armadale core path



8. Beecraigs link path



9. Union Canal Broxburn



10. Path to Seafield



11. River Avon



Birch - damming



May 14 New Dam



Nov 14 Visitor Centre new path



Nov 14 New Paths LT





Craigswood Track

Murrayfield Park Community Sports Facility



**West Lothian Council/Blackburn United
Community Football Club
Sports Facilities Fund
(Stage 2)
July 2011**





(A) Naturalistic area - In order to improve the ecological diversity of the site, it is recommended that this area is planted with local species that are well suited to the site. It is recommended that a mix of tree species be used to provide a variety of habitats for the park. A small, accessible path runs through this area linking further recreational facilities.



(B) Passive recreation area - This area consists of an open grassy area with benches and trees. It provides a quiet space for people to relax and enjoy the outdoors. The area is surrounded by trees which reduce wind speeds and provide an attractive and welcoming setting for the site.



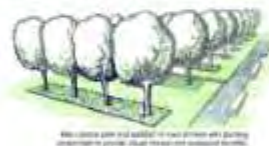
(C) Play area - The existing area is to be improved with a variety of play equipment that provides both active and passive opportunities for the younger users of the park. A small, accessible path runs through this area linking further recreational facilities.



(D) Active recreation area - This area is located in the center of the park and is intended to provide a space for active recreation. It includes a variety of sports facilities and is surrounded by trees and landscaping. The area is intended to provide a space for active recreation and is surrounded by trees and landscaping.



| King George V Public Park | Design Strategy and Other Features |



Maximize open and shaded areas to provide opportunities for both active and passive recreation.



Maximize open and shaded areas to provide opportunities for both active and passive recreation.

The Design Strategy for King George V Park is based on the following principles:

- A well integrated and easily managed park.
- A space that provides a variety of uses and opportunities.
- Facilities that provide excellent recreational opportunities.
- A park that is accessible to all.
- A park that provides a variety of recreational opportunities.
- A park that provides a variety of recreational opportunities.

Design Strategy

The plan includes the creation of a 'natural' forest to the south of the site which will be a naturalistic area. This will be a naturalistic area which will be a naturalistic area. This will be a naturalistic area which will be a naturalistic area.



| King George V Public Park | Examples of Trees to be used |



















West Lothian Council











A welcome sign for Glenview Park. The sign is white with an orange arched frame. At the top center is a small crest. Below it is a row of colorful icons: a green tree, a person in a wheelchair, a person on a horse, a person walking, and another green tree. The text "Welcome to Glenview Park" is written in a reddish-brown font. At the bottom, there is a small logo on the right and some illegible text on the left.

Welcome to
Glenview Park





THE WEE CROFT









Headstone Stabilisation





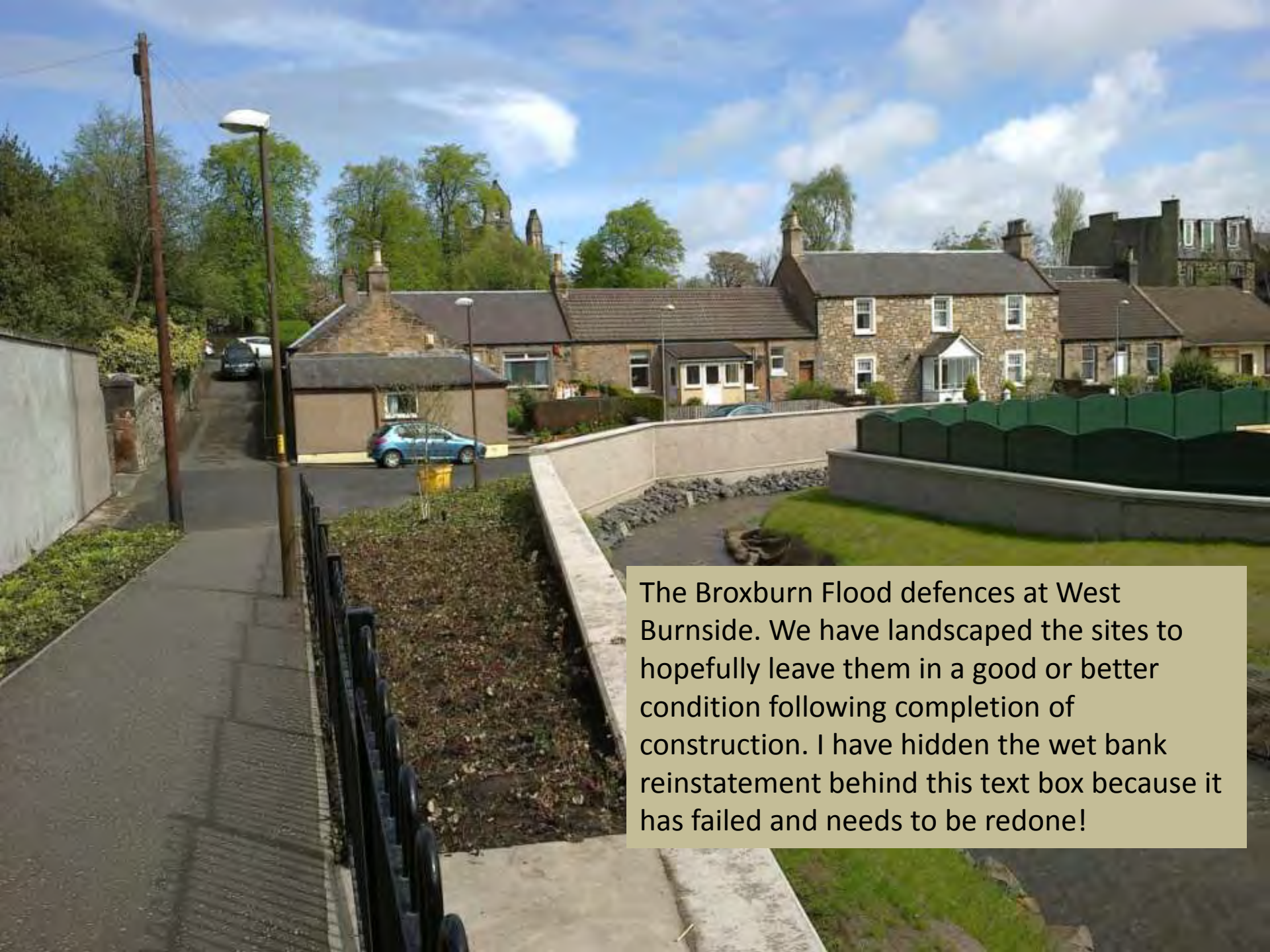




A sustainable drainage basin to treat and detain surface runoff from a recent council housing development at Eliburn Livingston. The system has been designed and constructed in accord with Scottish Water's current standards but detracts from the visual amenity and contributes little to enhance biodiversity.

A surface water outfall from a recent council housing development at Eliburn, Livingston. The outfall has rightly been criticised as being overly obtrusive.





The Broxburn Flood defences at West Burnside. We have landscaped the sites to hopefully leave them in a good or better condition following completion of construction. I have hidden the wet bank reinstatement behind this text box because it has failed and needs to be redone!



Burngrange Court, West Calder sustainable drainage system and detention basin. This wasn't constructed by the Council but has been adopted but is shown as a contrast to the previous two slides to show what is possible.



Wester Inch, Bathgate. A landscape scale sustainable drainage system designed to reduce the risk of flooding in Bathgate town centre and treat runoff from the first and second phase of the development. Not constructed by the Council but installed to comply with planning conditions.

End

WLC Open Space Strategy

No it's not the end ...our journey continues



WLC Open Space Strategy

.....Any questions ?

