

Highland  HERO

Heat Energy & Renewable Opportunities

Jackie Sayer & Sophie Vivaudou
Energy & Sustainability Team

Outline Agenda

1. Highland HERO
2. Heat Map to HERO Map
3. HERO Map Functionality (incl. expectations)

Highland HERO

Highland HERO is **the approach that The Highland Council are taking towards heat and energy transformation in the Highlands.**

Primary Outputs:

- 1. HERO Map** – an interactive GIS based map of the Highland energy landscape
- 2. HERO Strategy** – a long-term energy strategy for The Highland Council

HERO Delivery Team



Solar Sophie



Electric Eddie



Jackie Joule



Fiona Fuels



Sustainable Stewart

Highland HERO - Logic

HEAT

where is heat needed?

ENERGY

what are the total energy needs?

RENEWABLE OPPORTUNITIES

how best can heat and energy be delivered?

= LOCAL SUSTAINABLE ENERGY SOLUTION

Highland HERO – National Alignment

Three themes for the new Scottish Government Energy Strategy:

1. A **stable, managed energy transition** – ensuring Scotland has **secure** and **affordable** energy supplies
2. An **integrated ‘whole systems’ view** – consideration of Scotland’s energy **supply AND consumption** equally
3. A **truly local vision of energy provision** – promoting **local energy solutions**, planned with community involvement.

Heat Map to HERO Map

‘enhancing the **Heat Map** with energy and social elements’

Added

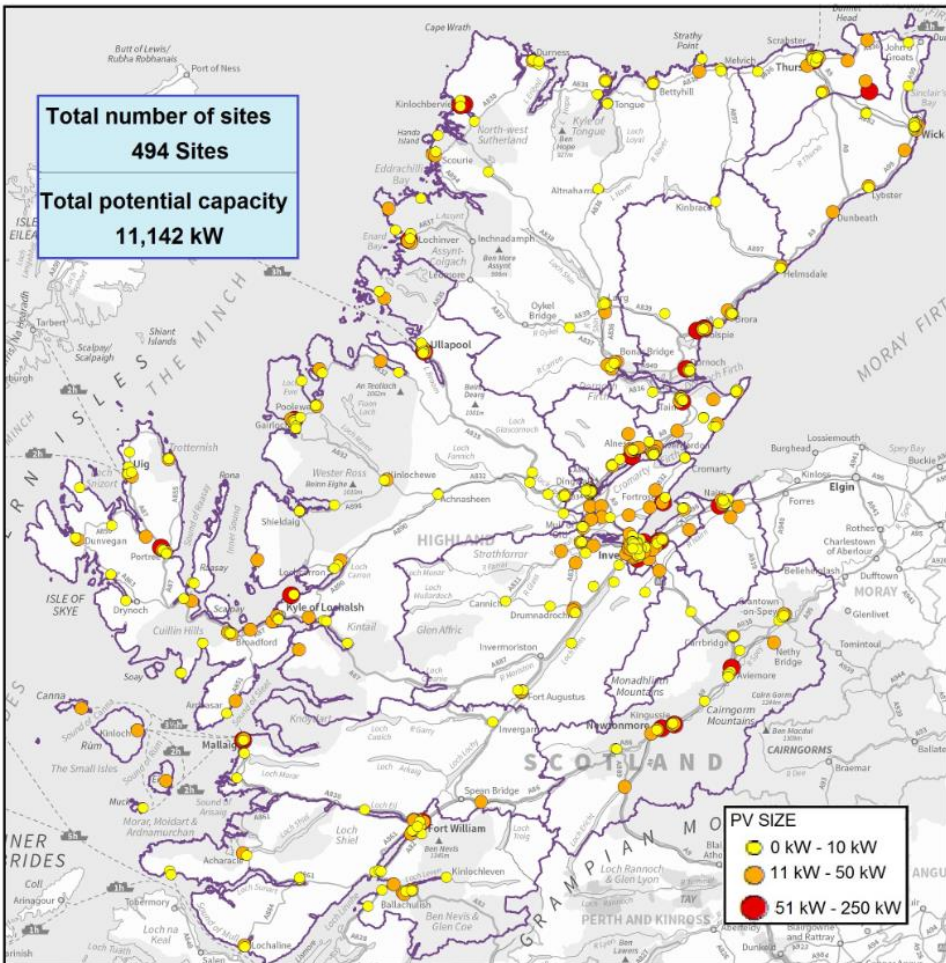
1. Fuel Poverty
2. Electricity Network
3. Sewage Network
4. Energy Project Opportunities
5. School Energy Visits

To Be Added

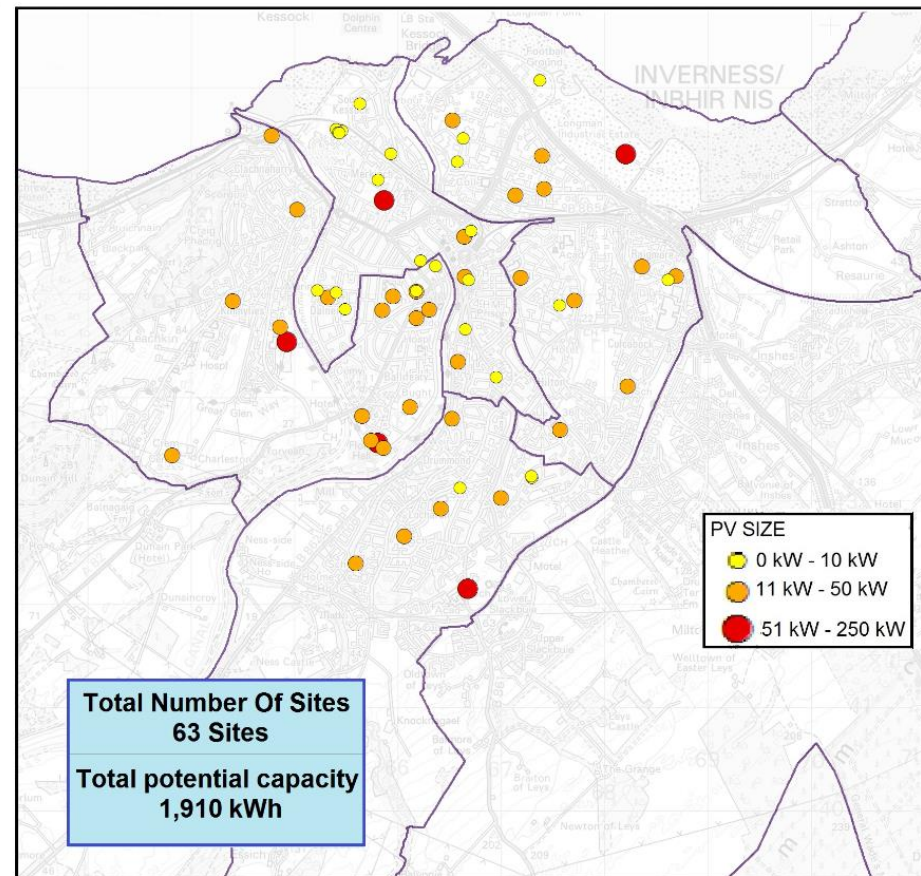
1. Refresh of Utilities
2. RHI /FIT sites
3. ‘Green Team’ network
4. Detailed social housing data
5. BMS and Control Level

Heat Map to HERO Map

Non-domestic PV Opportunities (HC Assets)



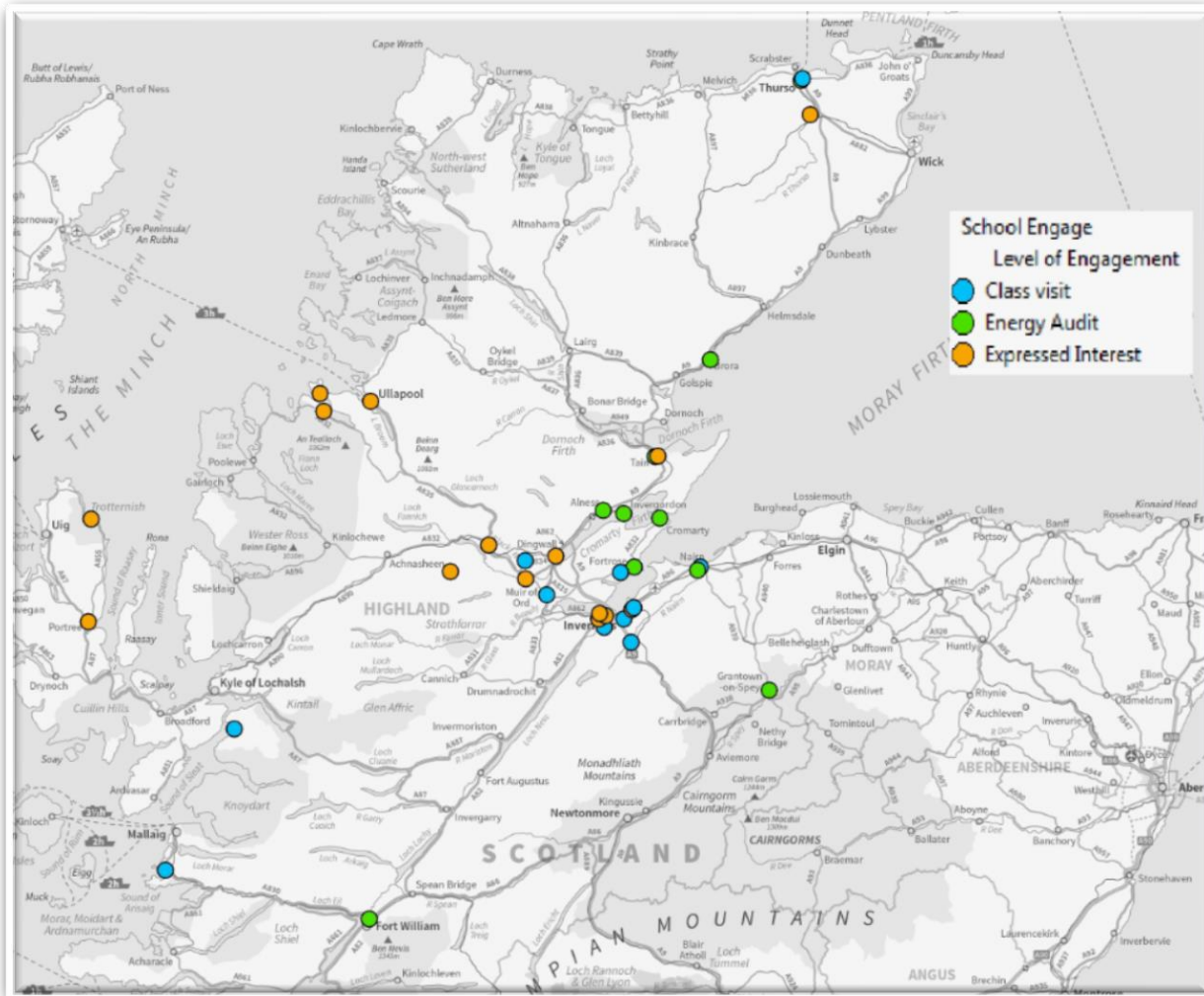
Highland-wide



Inverness

Heat Map to HERO Map

School Engagement



HERO Map - Functionality

Main (Useful) Functions to Date

1. WestPlan DH Opportunity Assessment Exercise

- collaboration with RES – published as part of the planning consultation

2. Assisting with baseline data for HERO strategy

- Data gathering ongoing

3. Illustrating the Renewable Landscape on HERO map

- Map existing renewables
- Map potential renewable opportunities
- RAG the opportunities based on set criteria

4. Powerful tool for Energy Team and beyond

- A platform to track activities and share workload information
- Data sharing (out with the team) is a grey area

HERO Map - Functionality

Added Value

1. **User friendly and easy to interpret**
 - a. essential when engaging stakeholders (members)
 - b. + transparent and comprehensive methodology
2. **Focus on local energy solutions**
 - a. community at the core/holistic approach
3. **High potential for future development**
 - a. can help with baseline/benchmarking challenges
4. **Will help to deliver projects**
 - a. local control retained
 - b. lower consultancy fees

But there have been significant issues with the base heat data provided

HERO Map - Functionality Expectations

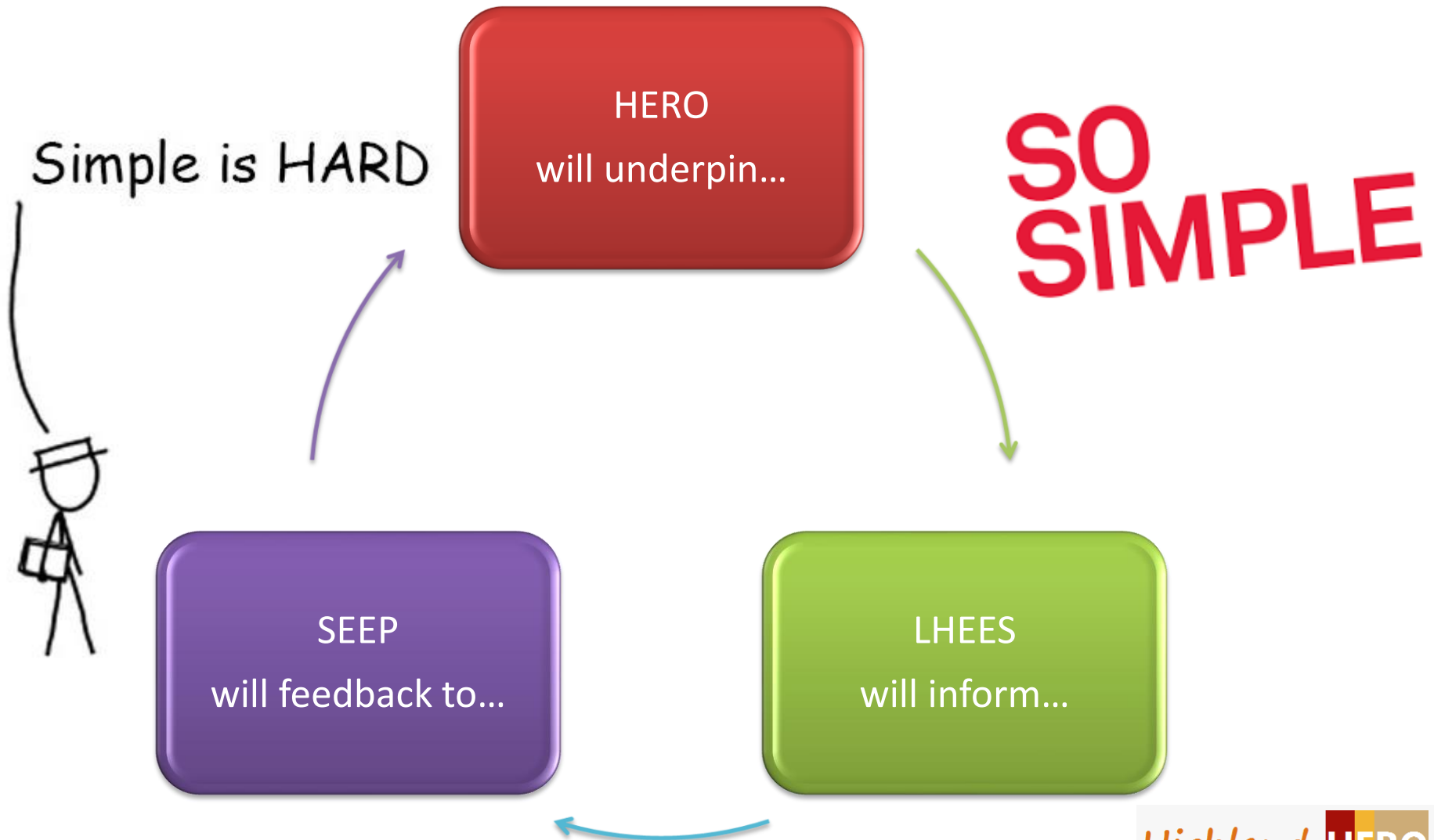
How does it all link together?

1. **HERO** – Heat, Energy & Renewable Opportunities
2. **LHEES** – Local Heat Energy Efficiency Strategy
3. **SEEP** – Scotland's Energy Efficiency Programme



**actual footage
of me at work**

HERO Map - Functionality Expectations

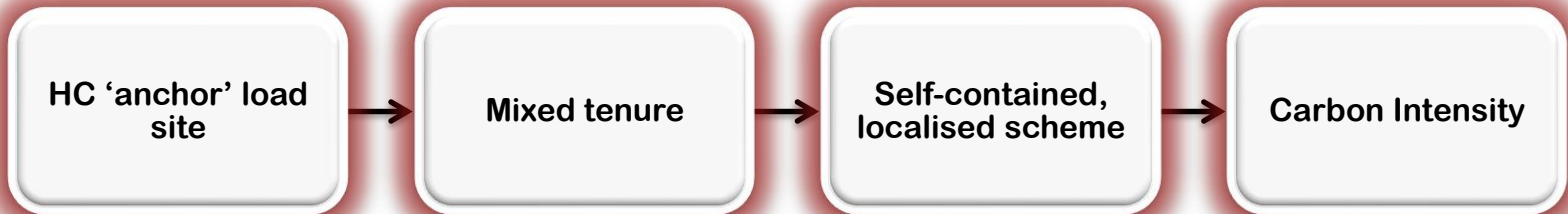


HERO Map - Functionality Expectations

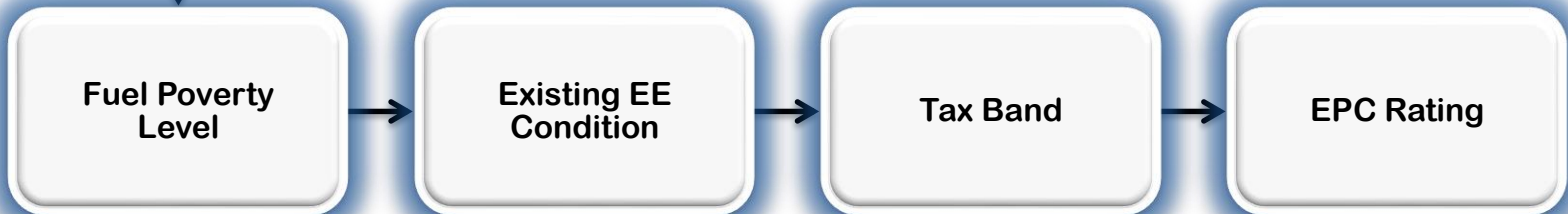
DRAFT

SEEP Project Identification Process

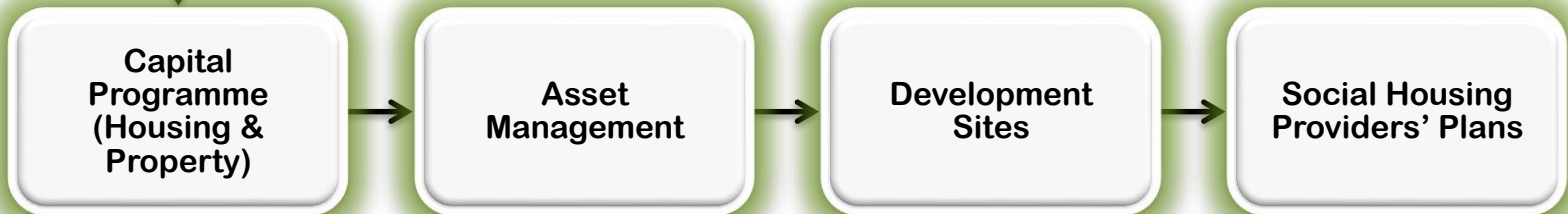
Practicalities



Refinement



Alignment



ALSO – community activity level, demand profile, commercial activity etc....

HERO Summary

Current Progress

1. Significant progress with adding GIS energy data to heat map
2. Excellent internal relationship formed with planning (and others)
3. Strengthening project identification process
4. Draft SEEP/LHEES outline 'pre-plan'

Unknowns

1. Programme timeline
2. How exactly SEEP/LHEES will align in practical terms
3. Political support – challenging but improving
4. National ESCO?

Highland **HERO**

Heat **E**nergy & **R**enewable **O**pportunities

THANK YOU

energy.engineering@highland.gov.uk