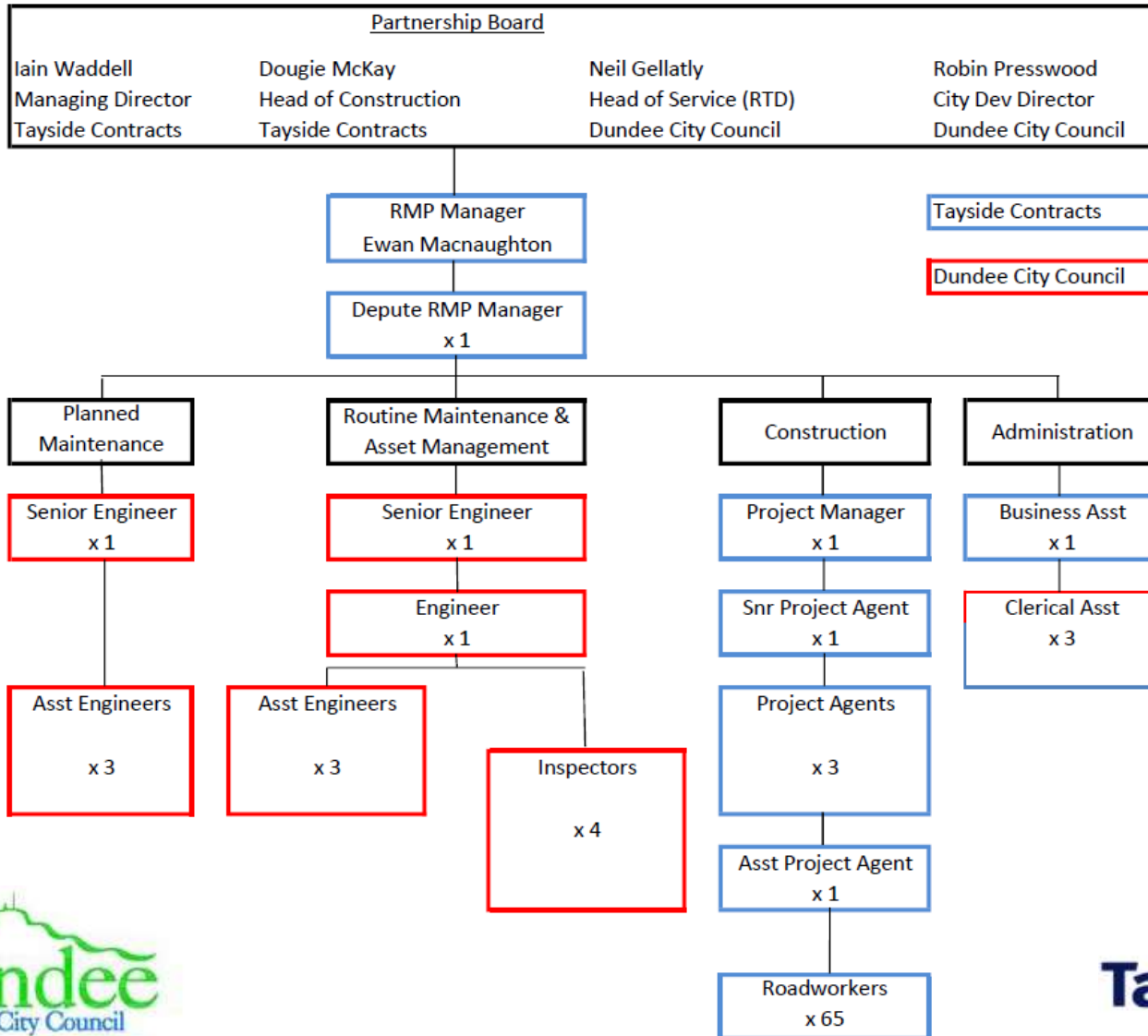


Road Maintenance Partnership

Ewan Macnaughton CEng MCIHT




**Dundee City Council / Tayside Contracts
Road Maintenance Partnership Structure March 2019**





- 550km of roads (Distance from Dundee to Birmingham, or 700 football pitches)
- 1,000km of footways
- 25,000 road gullies
- 30,000 items of street furniture
- Non adopted asset 51km of road & 380km footway

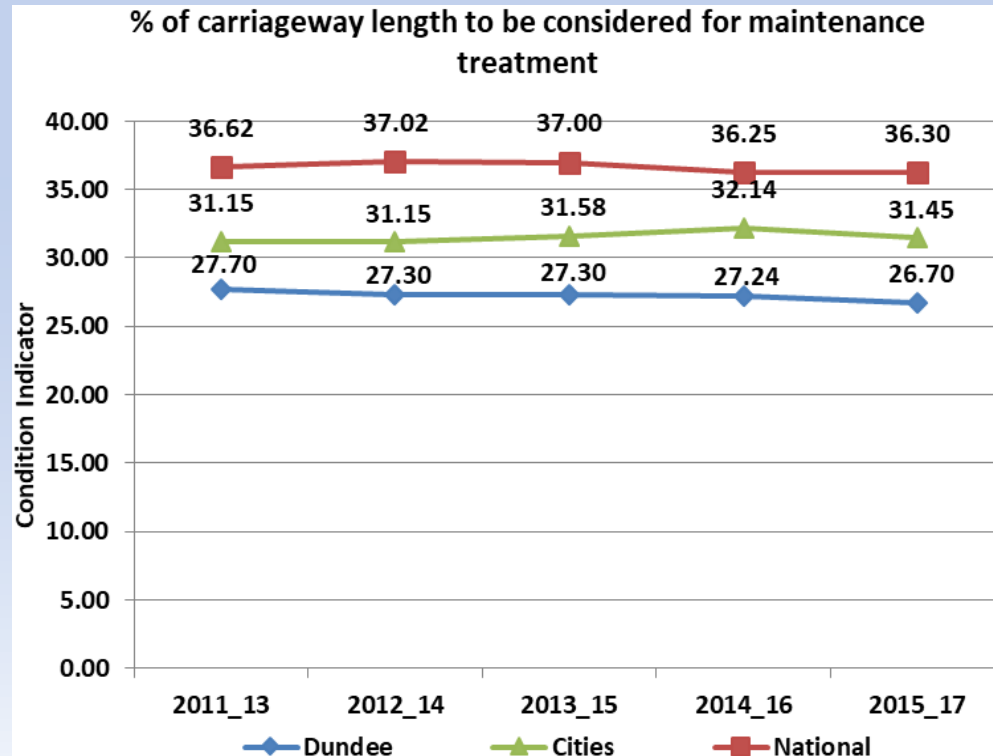


Dundee City Council 2012-17 Service Plan;
Maintain network in a steady state of condition
Objective achieved in each corresponding year.
2017 Dundee has the best condition classified
road network of any Scottish Local Authority

Asset Management

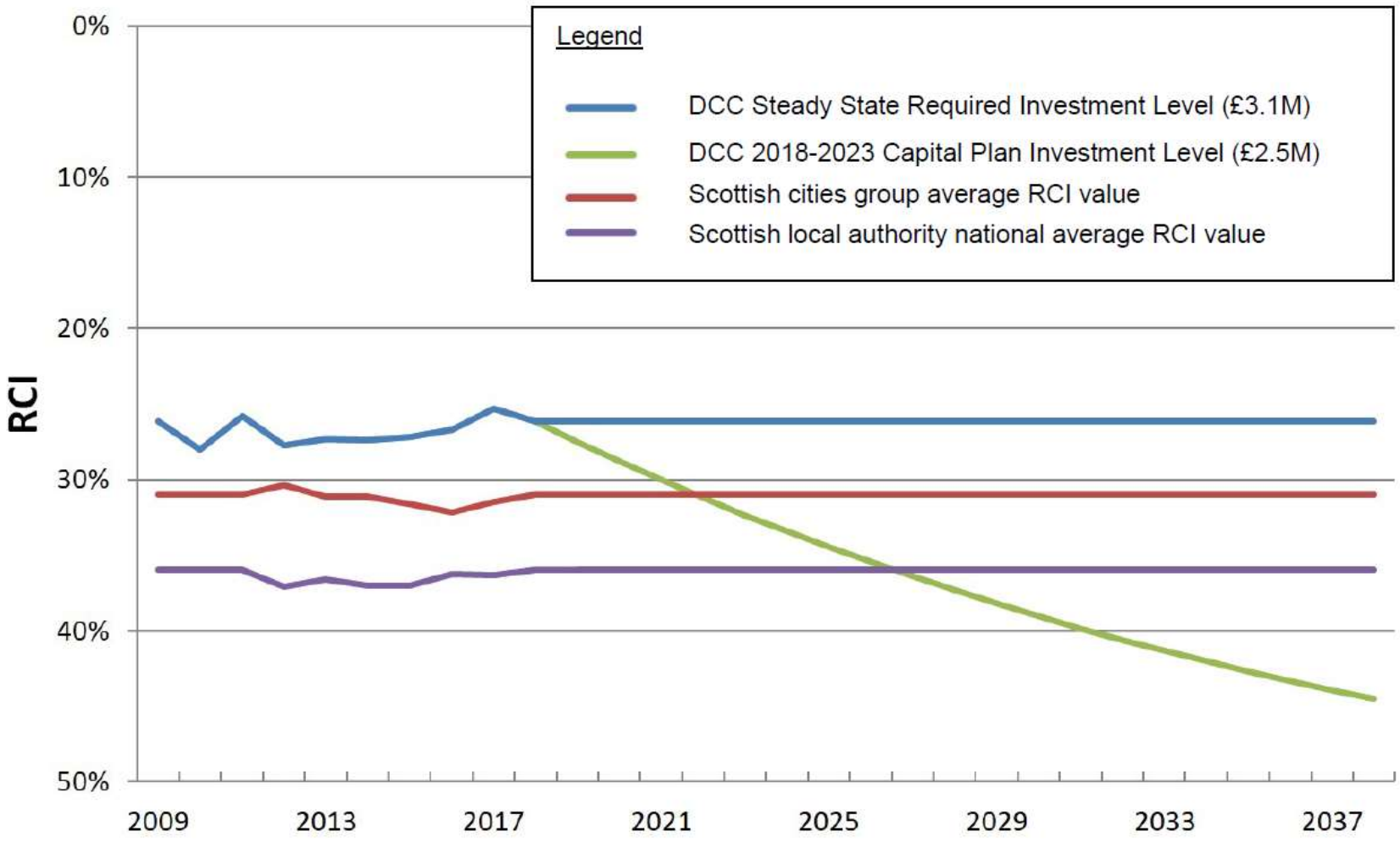
Asset Management

2016/17 Cost per km of road maintenance;
Cities Average = £16,223 DCC = £15,313



Graph 1 - Scottish Road Maintenance Condition Survey Results 2011 - 2017

Managed Decline

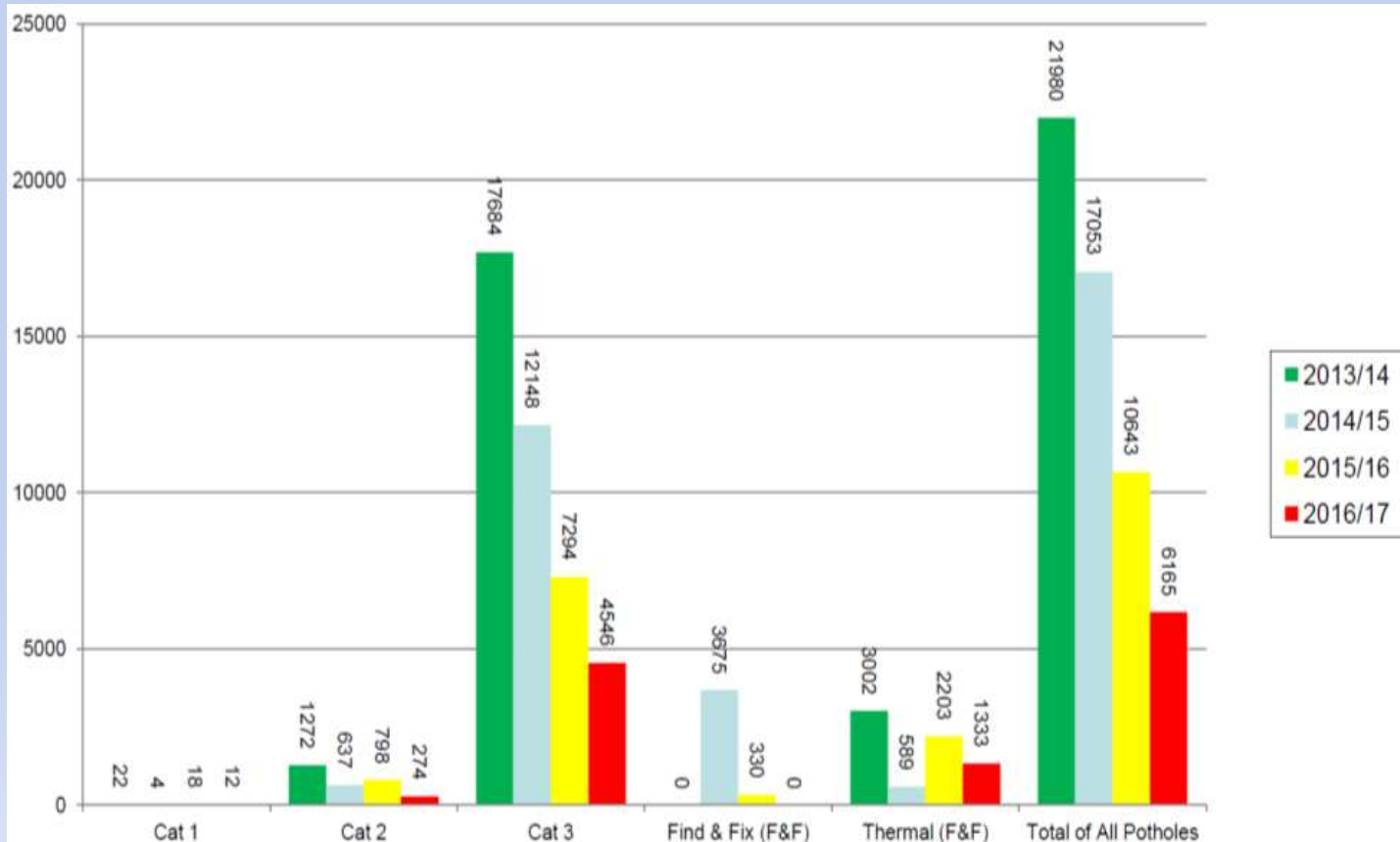


Graph 1 – Road Condition Index (RCI) Finance Model Comparator Graph

Potholes



Potholes



Claims payments in corresponding periods;

2013/14 = £4,651 2014/15 = £2,284 2015/16 = £2,353 2016/17 = £1,756

Values are 10% of the Scottish Cities Group average annual payments

Safety Defect Repairs (Category 1-4 defects) – Annual Budget £350k

30% of safety defects repaired by thermal patch permanent repair method.

Of the remaining 70%, repairs are completed with hot asphalt (no cold tar repairs).

Planned Patching – Annual Budget £800k

Machine laid and JCB 3CX planner patching repair methods.

Following year surface dressing or thin overlay (25mm thick Taycoat or 15mm UTLA)





Winter Maintenance

Winter Service Review

Phase 1 – 2018/19

Tri-Council Collaborative Service Standard




Phase 2 – 2019/20

Tri-Council Standardised Winter Policy and Operations Manual

Phase 3 – 2020/21

Tri-Council route rationalisation review (first principles review)

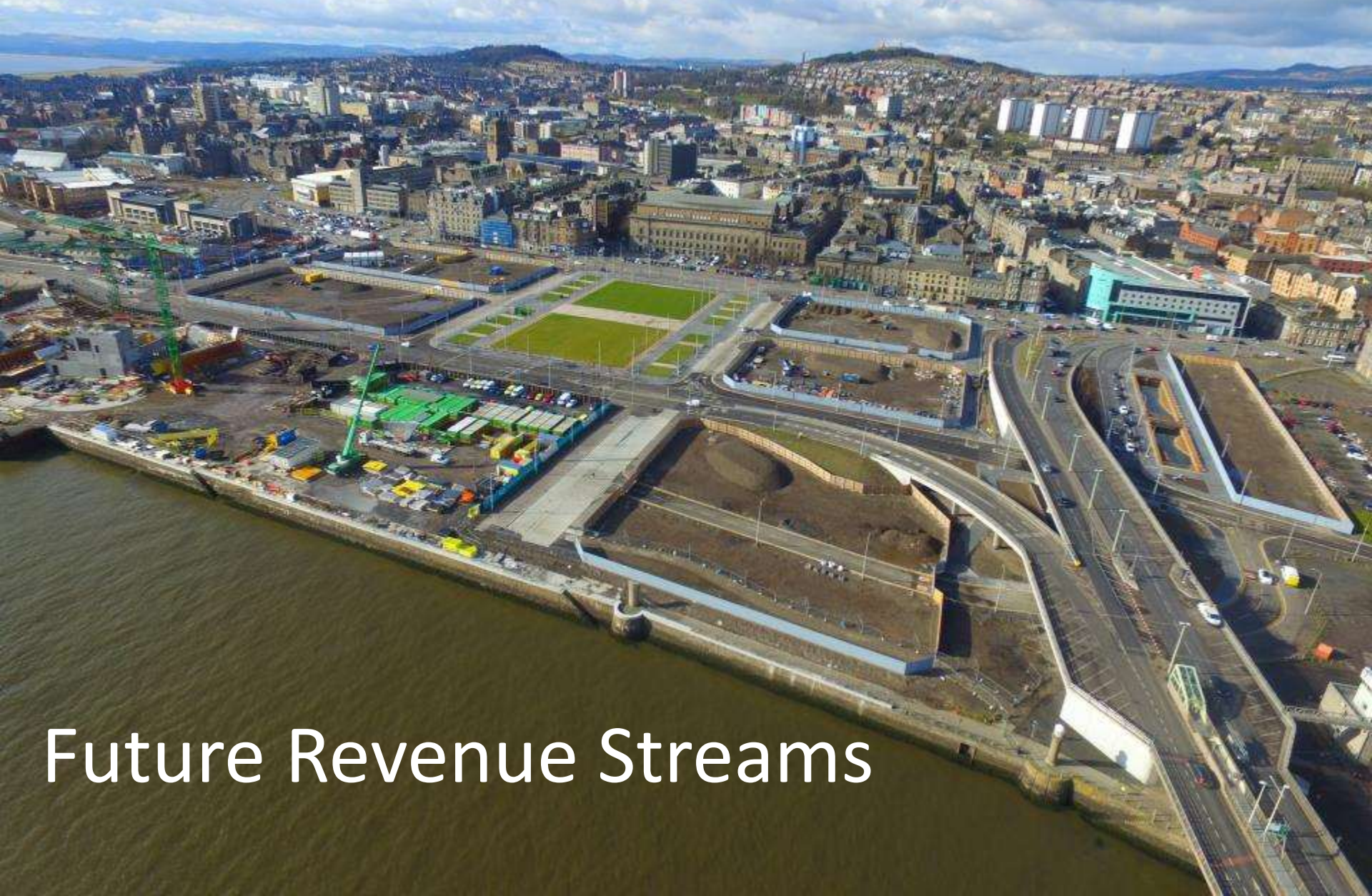


				
C0	Response Standards			
C1	Response Time (time from decision instructed to treatment beginning)	1 hour mobilisation	1 hour	1 hour response time from receiving call to starting route treatment
C2	Treatment Time (time from leaving depot / starting route to completion) excluding snow routes extensions	2 hours	Varies up to 2hrs 45mins Before peak hour	Varies up to 3hrs Complete category 1 routes by 07:30 Monday to Saturday and 09:00 Sundays and public holidays
C3	Specified treatment start time for carriageway treatment constraints – i.e. prior to 7.30 or 5am start (school start or congestion constraints)	Priority Network Treatments C/way 5am start F/way 6am start	Priority Network Treatments C/way 5am start F/way 6am start Aux. 06:00 hrs	Nightshift starts at 00:00 but can be called in at 21:00 in snow conditions Early morning cat 1 routes start times vary between 05:00 and 06:30 Footway routes start at 06:30 On Sundays and Public holidays start times will be 06:00 for carriageway routes and 08:00 for footway routes
D0	Winter Cover Periods			
D1	Priority Carriageway Cover – Lead in period	1 week	3 weeks	5 weeks
D2	Priority Carriageway Cover – Core period	23 weeks	22	14 weeks
D3	Priority Carriageway Cover – Lead out period	1 week	3 weeks	4 weeks
D4	Secondary & Tertiary Carriageway Cover – Lead in period	0 weeks	0	N/A as required
D5	Secondary & Tertiary Carriageway Cover – Core period	23 weeks	22 weeks	N/A as required
D6	Secondary & Tertiary Carriageway Cover – Lead out period	0 weeks	0	N/A as required
D7	Nightshift Carriageway Cover	27 weeks	0	14 weeks
D8	Priority Footway Cover – Lead in period	0 weeks	0	1 week
D9	Priority Footway Cover – Core period	19 weeks	22 weeks	16 weeks
D10	Priority Footway Cover – Lead out period	0 weeks	0	1 week
D11	Secondary & Tertiary Footway Cover – Lead in period	0 weeks	0	N/A as required
D12	Secondary & Tertiary Footway Cover – Core period	19 weeks	22 weeks	16 weeks
D13	Secondary & Tertiary Footway Cover – Lead out period	0 weeks	0	N/A as required
D14	Hours of treatment action cover – carriageway priority routes	0500-2200	05:00-23:00 hrs	00:00 to 21:00 during full standby period when nightshift is operating 05:00 to 21:00 during lead in / lead out periods of cover
D15	Hours of treatment action cover – carriageway secondary routes	0730-1600	0730-1600	08:00 – 15:00 Monday to Friday
D16	Hours of treatment action cover – carriageway tertiary routes	0730-1600	0730-1600	No response – don't have any routes with this designation

Sustainability



Diversification



Future Revenue Streams



South Road Tennis Courts



Dawson Park Tennis Courts



Magdalen Green
Play Park



Victoria Park
Tennis Courts

Questions and Answers

