

# Sector Cyhoeddus yn Garbon Niwtral Erbyn 2030

Michelle Delafield

Llywodraeth Cymru

[Michelle.delafield@llyw.cymru](mailto:Michelle.delafield@llyw.cymru)

# Carbon Neutral Public Sector by 2030

Michelle Delafield

Welsh Government

[Michelle.delafield@gov.wales](mailto:Michelle.delafield@gov.wales)



# Hanes

## 2017

- *Dadl yn y Cynulliad*
- *Cyhoeddiad gan y Gweinidog*
- *Galwad am dystiolaeth*

## 2018

- *Digwyddiad i arweinwyr y sector cyhoeddus*
- *Tystiolaeth o'r Prosiect Carbon Bositif*

## 2019

- *Arolwg Gwaelodlin*
- *Ymchwil ar safonau a dulliau adrodd*

## Yn y cyfamsr

- *Cyflawni & ehangu cylch gwaith cymorth*

# History

## 2017

- *Assembly Debate*
- *Ministerial Announcement*
- *Call for Evidence*

## 2018

- *Public Sector Leaders' Event*
- *Evidence from Carbon Positive Project*

## 2019

- *Baseline Survey*
- *Research on reporting standards & approaches*

## In the meantime

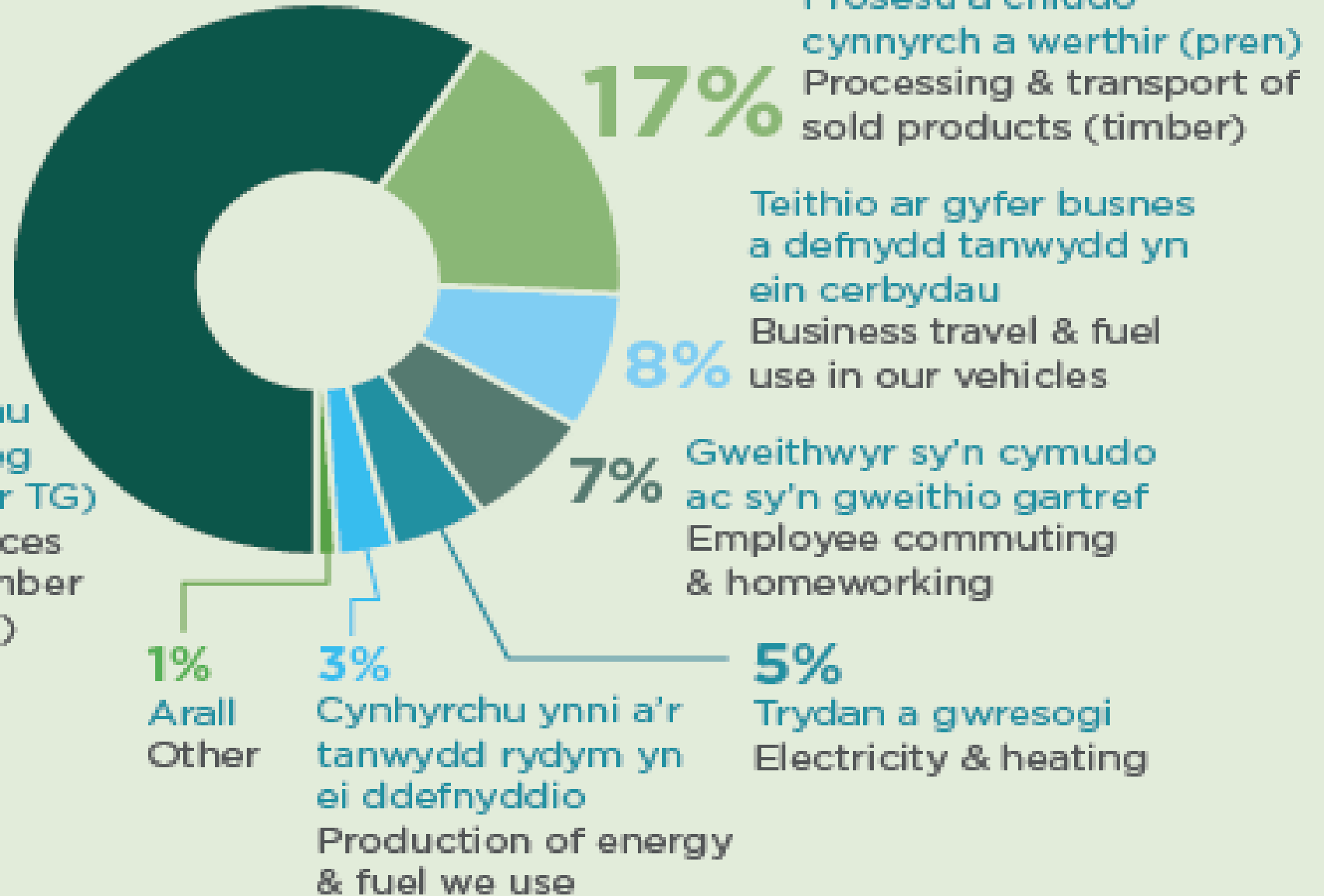
- *Delivering & expanding the remit of support*

# Yn ôl ffynhonell By source

## Cyfoeth Naturiol Cymru / Natural Resources Wales

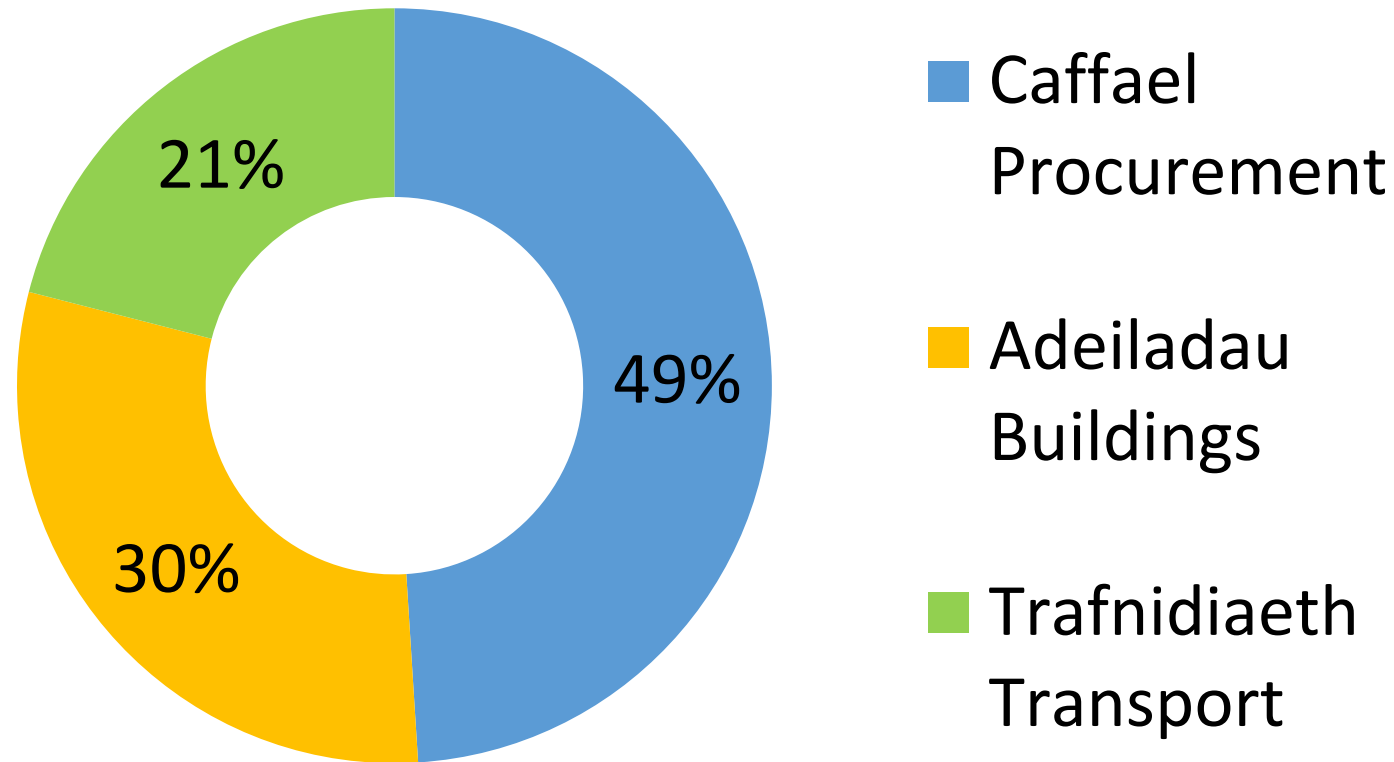
# 59%

Nwyddau a gwasanaethau a brynwyd (e.e. peirianneg sifil, casglu pren, cyfarpar TG)  
Purchased goods & services (e.g. civil engineering, timber harvesting, IT equipment)

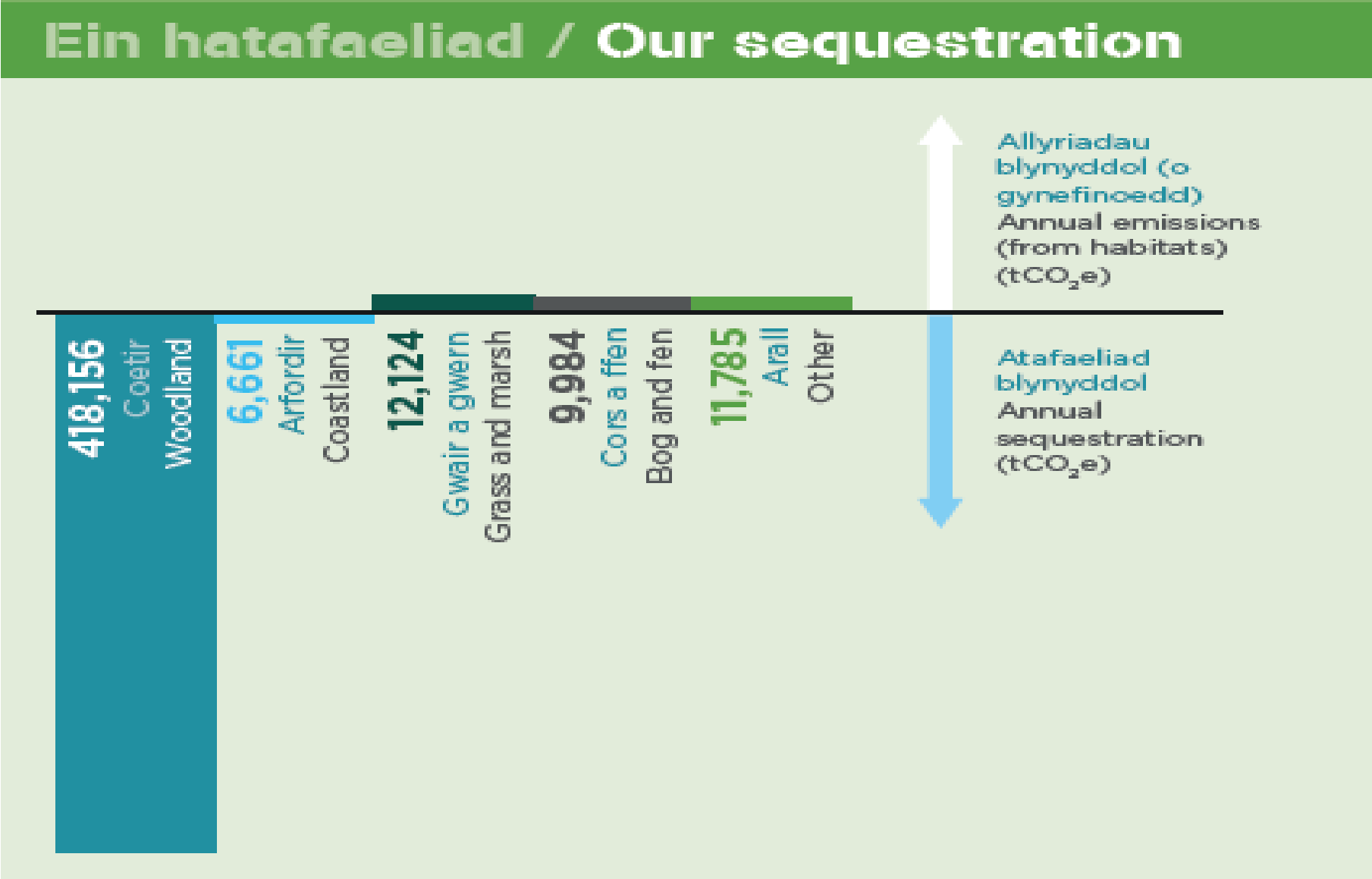


# Ôl Troed Carbon GIG Cymru 2016-17

## NHS Wales Carbon Footprint 2016-17



# Defnydd Tir - Prosiect Carbon Bositif - Cyfoeth Naturiol Cymru Land Use - Carbon Positive Project - Natural Resources Wales



Adeiladau  
Buildings



Symudedd a Thrafnidiaeth  
Mobility & Transport



# Blaenoriaethau Priorities



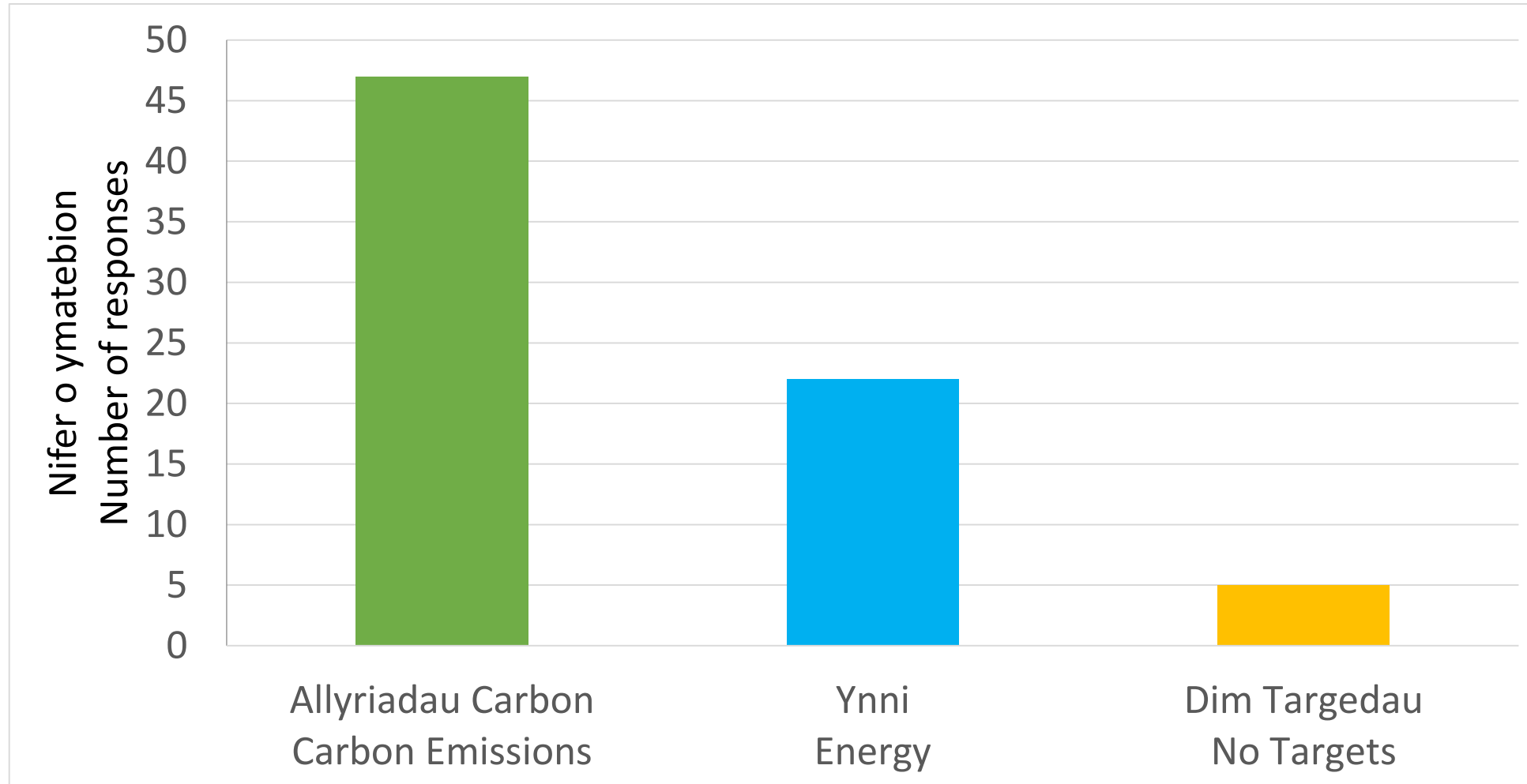
Defnydd Tir  
Land Use



Caffael  
Procurement

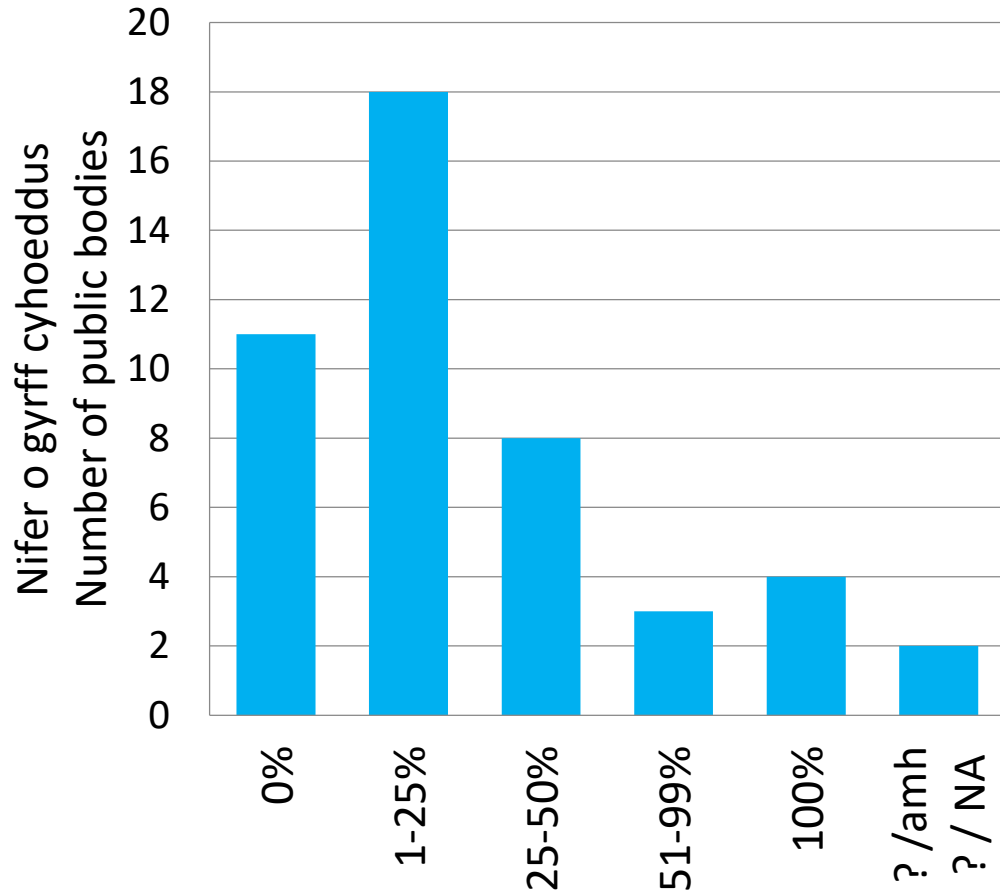
# Targedau ynni ac allyriadau carbon

## Energy and carbon emissions targets



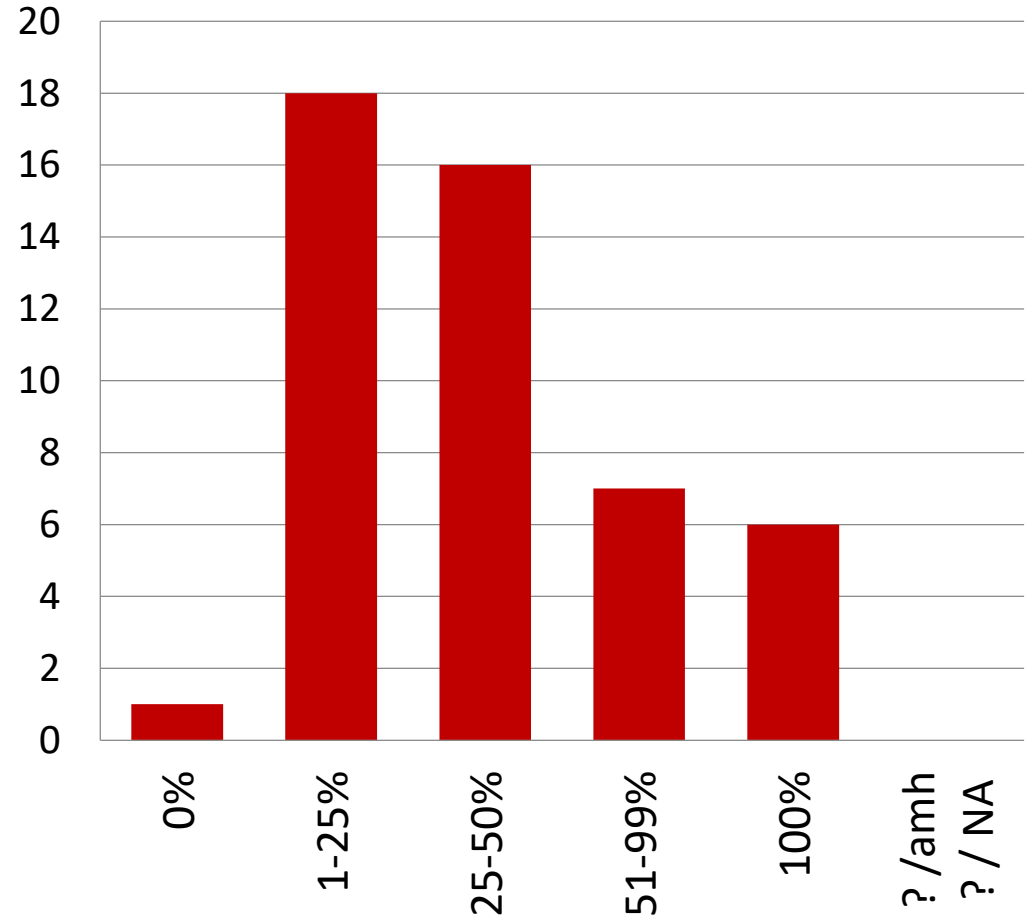
# Adeiladau / Buildings

## Hyfforddiant staff Staff training



46 ymatebiad / 46 responses

## Goleuadau LED LED lighting

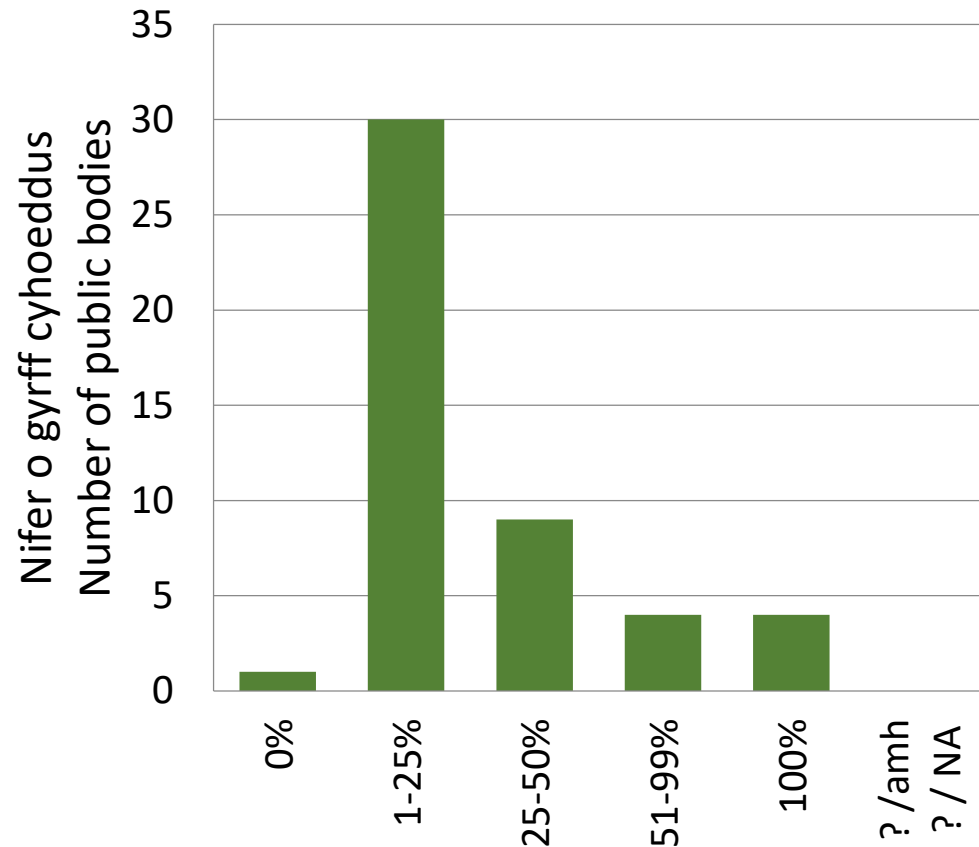


48 ymatebiad / 48 responses



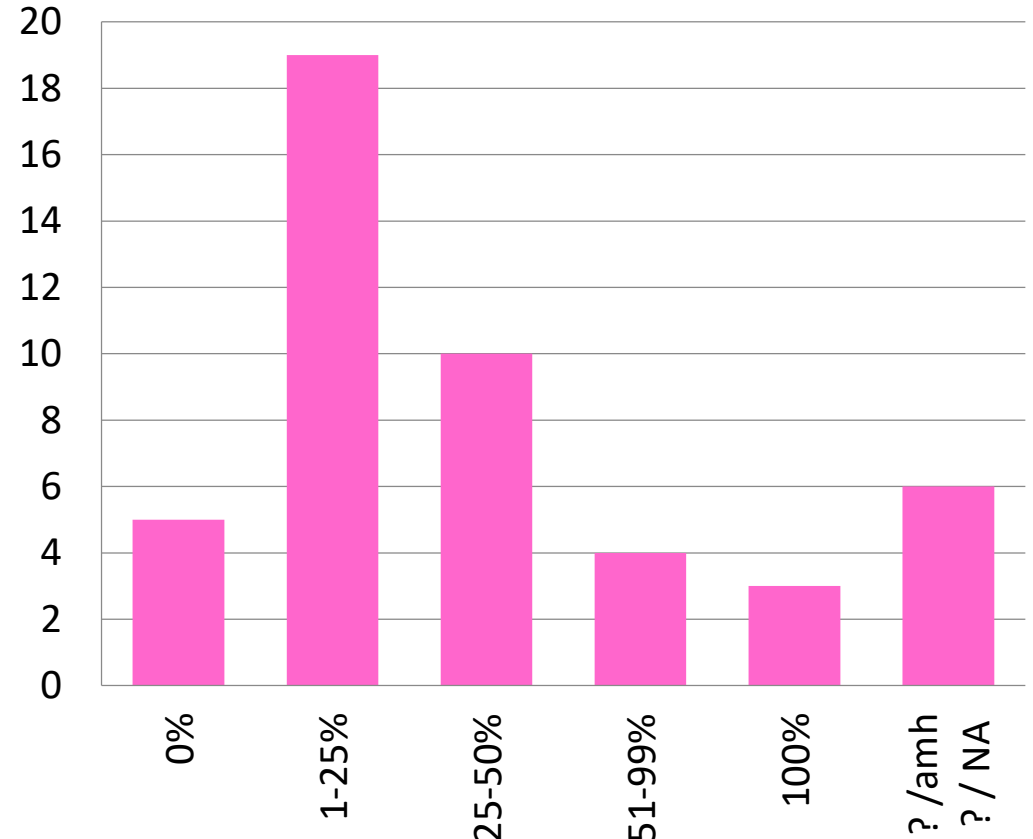
# Adeiladau / Buildings

**Uwchraddio gwres**  
**Heating upgrades**



48 ymatebiad / 48 responses

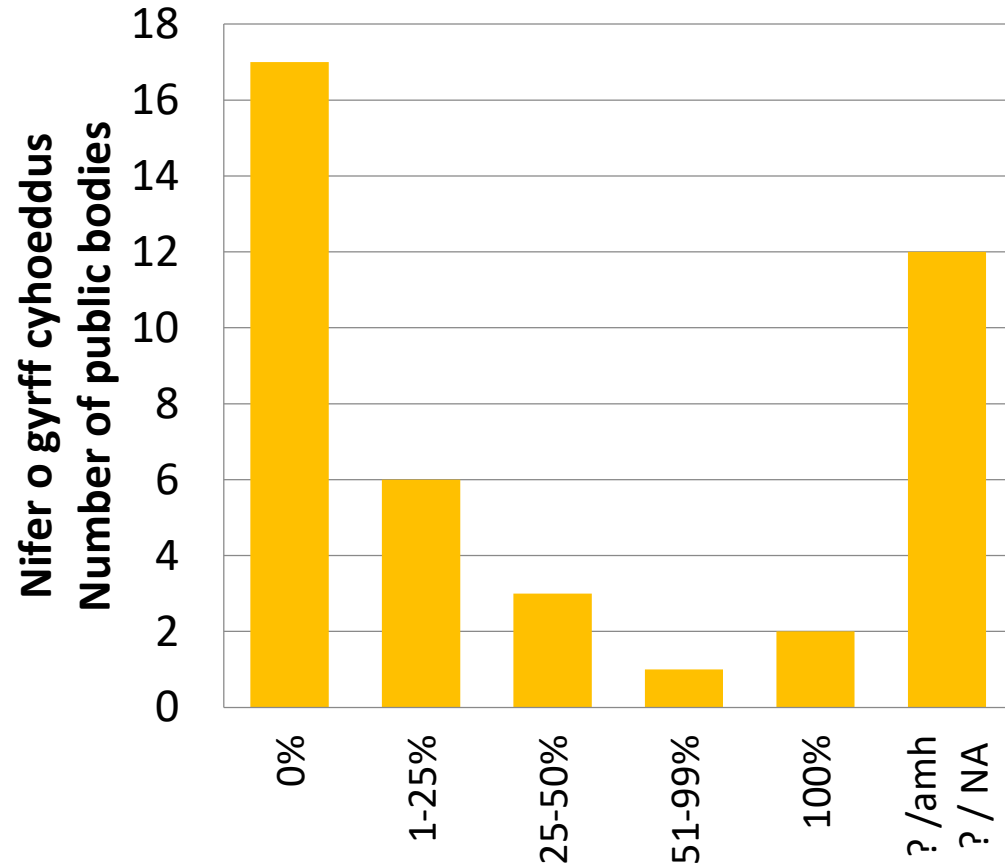
**Systemau rheoli ynni**  
**Energy management systems**



47 ymatebiad / 47 responses

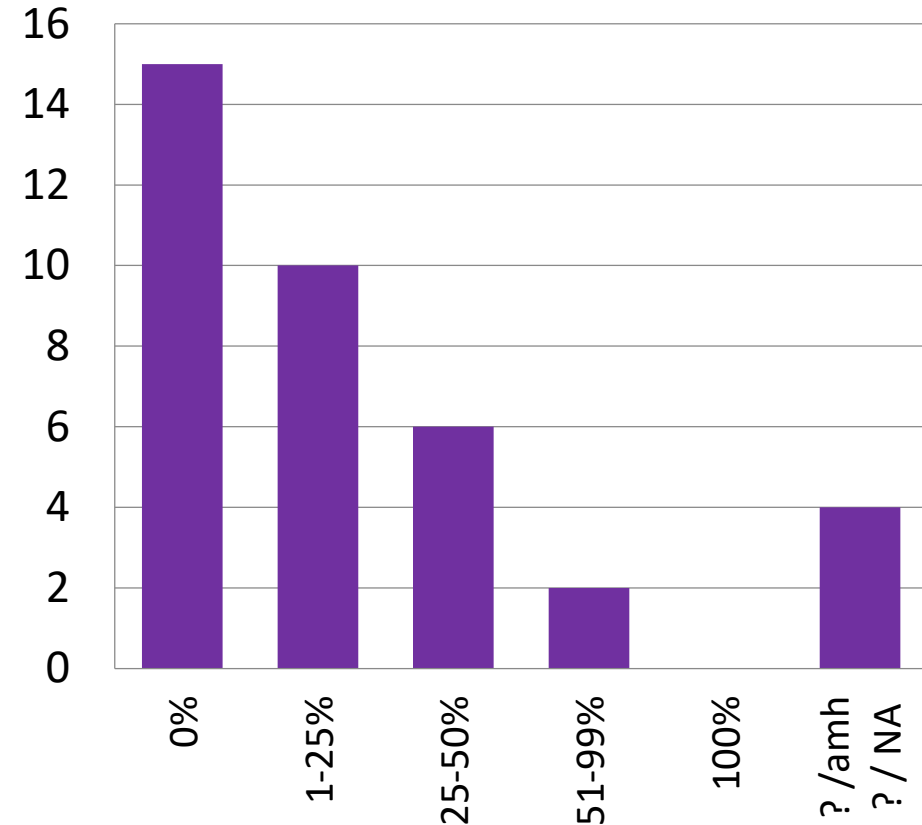
# Symudedd & Trafnidiaeth / Mobility & Transport

**Cynllunio teithiau busnes cynaliadwy**  
**Sustainable business travel planning**



41 ymatebiad / 41 responses

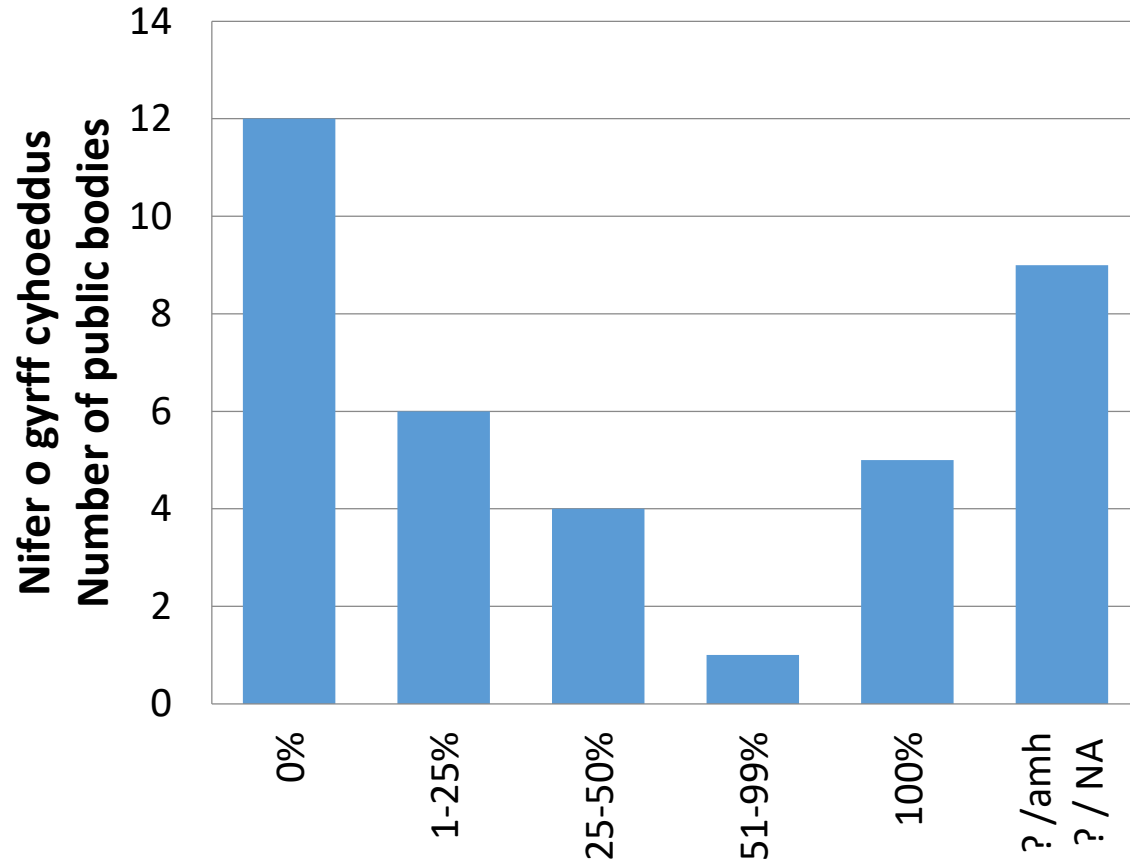
**Cymudo Cynaliadwy**  
**Sustainable staff commutes**



37 ymatebiad / 37 responses

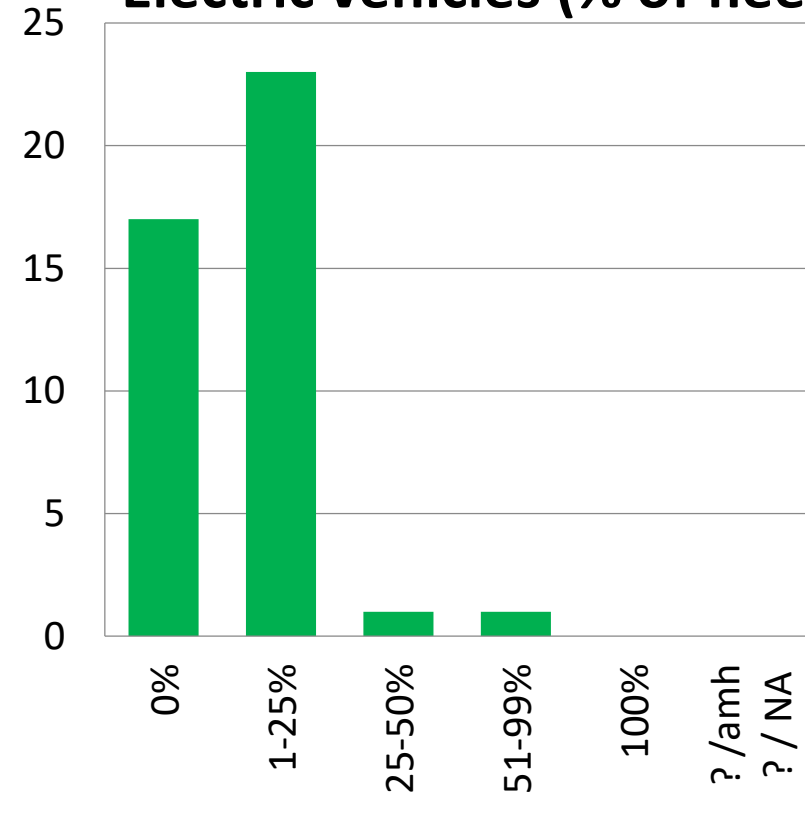
# Symudedd & Trafnidiaeth / Mobility & Transport

Telemateg  
Telematics



37 ymatebiad / 37 responses

Cerbydau trydan (% y fflud)  
Electric vehicles (% of fleet)



42 ymatebiad / 42 responses



# Defnydd Tir / Land Use



# Caffael

- 87% o gyrff cyhoeddus yn defnyddio offer yn cynllunio carbon i dywys staff caffael a byddai 74% yn fodlon gweithredu fel mabwysiadwr cynnar o offer yn o'r fath.

*(Arolwg Gwaelodlin)*

- Mae ein tîm Polisi Caffael yn:
  - Defnyddio data caffael o bob rhan o'r sector cyhoeddus yng Nghymru i nodi nwyddau a gwasanaethau carbon uchel.
  - Archwilio offer a thechneg ddefnyddiol.
- Nid yw hyn yn rhywbeth y gall timau caffael ei wneud ar ei ben ei hun – mae angen cefnogaeth ar draws y sefydliad a gweithredu.

# Procurement

- 87% of public bodies would use a carbon planning tool to guide procurement staff and 74% would happily act as an early adopter of such a tool.

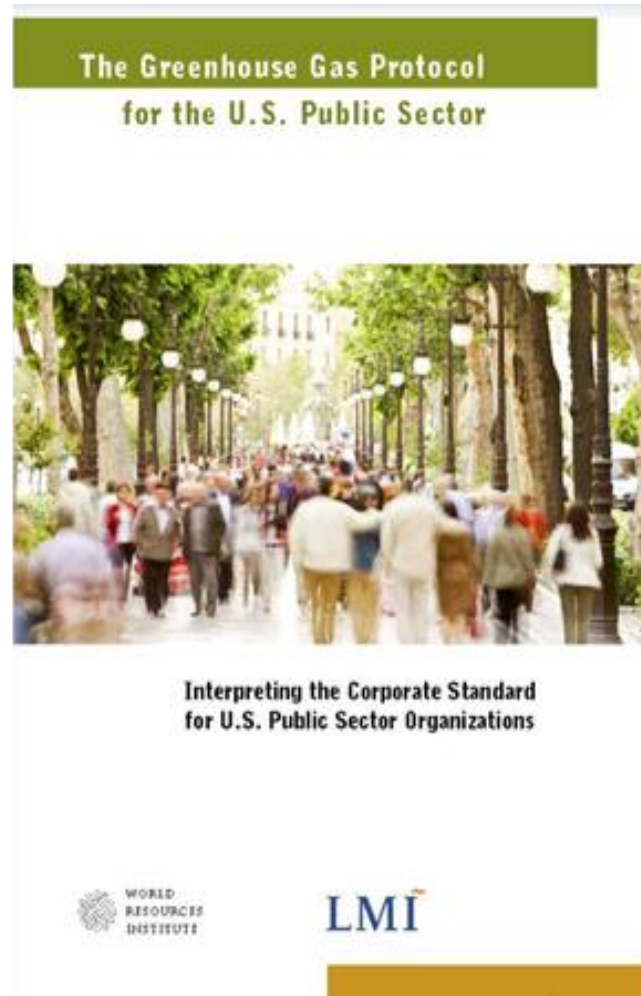
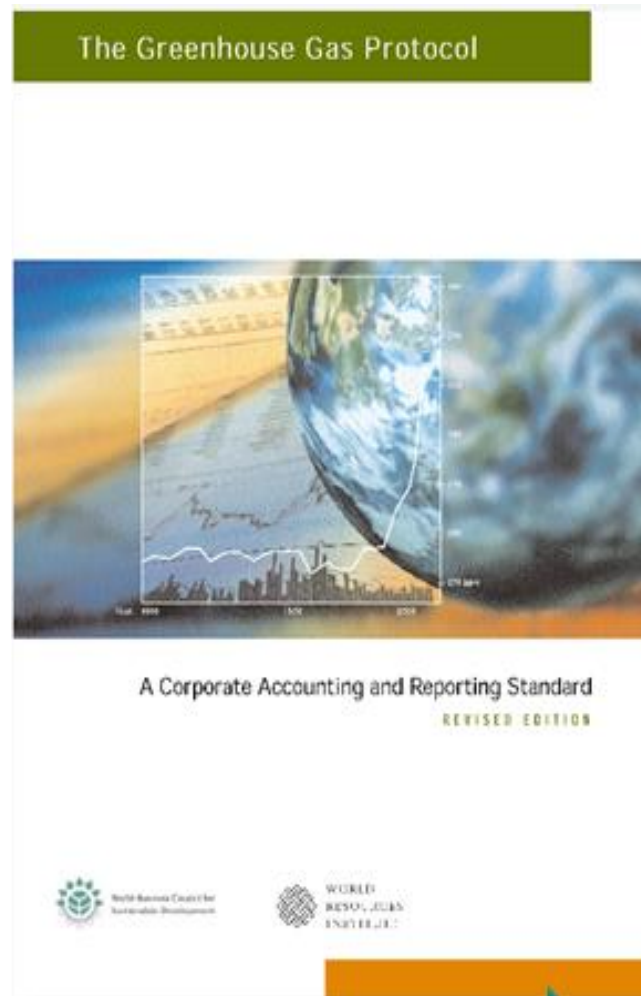
*(Baseline survey)*

- Our Procurement Policy team are:
  - Using procurement data from across the Welsh public sector to identify high carbon goods and services.
  - Exploring useful tools and technique.
- This is not something Procurement teams can do alone – it needs organisation wide buy-in and action.



# Cyngor: Safonau a dulliau adrodd

## Advice: Reporting standards and approaches



# Camau nesaf

Prosiect i ddatblygu dogfen ganllaw ar adrodd allyriadau nwyon tŷ gwydr safonol:

- Gweithdy gyda chyrff cyhoeddus (16 Hydref 2019)
- Dogfen ddrafft (diwedd Tach 2019)
- Cyfnod profi (Rhag 2019 – canol Chwefror 2020)
- Canllawiau terfynol ar gael (01 Ebrill 2020)

Bydd cyrff cyhoeddus yn defnyddio canllawiau i allyriadau gwaelodlin ac yn adrodd mewn ffordd safonol.

Gellir defnyddio allbynnau i lywio'r gwaith o ddatblygu cynlluniau gweithredu cadarn.

# Next steps

Project to develop guidance document on standard greenhouse gas emissions reporting:

- Workshop with Public Bodies (16 October 2019)
- Draft document (end Nov 2019)
- Testing phase (Dec 2019 – mid Feb 2020)
- Final guidance available (01 April 2020)

Public Bodies will use guidance to baseline emissions and report in a standard way.

Outputs can be used to inform the development of robust action plans.

# Ymaddasu i Newid yn yr Hinsawdd

## Climate Change Adaptation







Diolch  
Thank you

