



THE

QUEEN'S GREEN  
CANOPY



THE PLATINUM JUBILEE 2022

# Project background

- Climate emergency and global Covid-19 pandemic
- The Queen has planted more than 1,500 trees all over the world
- The QGC has been formally signed off by **Her Majesty The Queen** and the **Prime Minister**
- All Devolved Administration Leaders engaged



## Why trees?



They benefit health



They benefit the environment



They boost wildlife



They strengthen communities



They grow the economy



They protect the future

# What is The Queen's Green Canopy?

*“Cuir craobh airson an Iubaili”*

*“Plant a tree for the Jubilee”*

- **Thank** The Queen for her exceptional service
- **Celebrate** Her Majesty's Platinum Jubilee
- **Promote** the importance of trees to the environment
- Communities, charities, schools, youth groups, councils and landowners will be planting trees across the UK to create a lasting legacy in honour of The Queen's leadership
- Encourage the planting of healthy trees in tree planting season that will thrive in their environments
- There will be a particular focus on supporting urban and the most disadvantaged communities to plant trees



# Our Patron



**HRH The Duke of Rothesay**



# The team



**Project Board** led by  
Sir Nicholas Bacon, Chair



**Executive Team** led by  
Colonel Dan Rex, Chief Executive

- ❑ Samantha Cohen  
*Co-Chair, Cool Earth*
- ❑ Lord Field  
*Trustee, Cool Earth*
- ❑ Geraint Richards  
*Head Forester, Duchy of Cornwall*
- ❑ Matthew Owen  
*Director, Cool Earth*

- ❑ Edward Barker  
*Tree Planting Director,  
Department for Environment, Food  
and Rural Affairs*
- ❑ Sam Richards  
*Special Adviser, 10 Downing  
Street*
- ❑ Alex Hickman  
*Special Adviser, 10 Downing  
Street*

- ❑ Ruth Evans  
*Development Director*
- ❑ Marnie Gaffney  
*Head of Communications*
- ❑ Jake Bufton  
*Digital Communications  
Officer*
- ❑ Alice Lord  
*Project Manager*

- ❑ David Corbin  
*Policy Lead*
- ❑ Anna Sambrook  
*Fundraising Officer*
- ❑ Sophie Kisnorbo  
*Executive Assistant*
- ❑ Ellie Owen  
*Project Coordinator*

# Governance and Advisors

## Governance Advisory Committee

- ❑ Tony Juniper CBE, *Natural England*
- ❑ Mark Leishman CVO, *RWHA*
- ❑ Sarah Clarke OBE, *Black Rod*

## Stewardship Advisory Committee

- ❑ The Hon Martha Lytton Cobbold, *Historic Houses*
- ❑ Niel Nicholson, *Forest Canopy Foundation*
- ❑ Mark Tuffnell, *CLA*

## Conservation Advisory Committee

- ❑ George Plumptre, *National Gardens Scheme*
- ❑ Simon Lloyd, *Forestry Climate Change Working Group*
- ❑ Jules Action, *The Woodland Trust*

## Urban Greening Advisory Committee

- ❑ Rev. Richard Sudworth, *Secretary for Inter Religious Affairs to the Archbishop of Canterbury*
- ❑ David Elliott, *Trees for Cities*
- ❑ Thomas Heatherwick

## Devolved Administration Committees

- ❑ Scotland
- ❑ Wales
- ❑ Northern Ireland

## Lord-Lieutenants network

## Ambassadors

- ❑ Dame Judi Dench
- ❑ Floella Benjamin
- ❑ Alan Titchmarsh

# QGC Scotland Advisory Committee

## **Committee Chair**

- Mr. Mark Pountain CBE, Non-Executive Adviser, Scottish Forestry

## **Committee Members**

- Mr. Robert Balfour, HM Lord-Lieutenant of Fife
- Ms Angela Douglas, Executive Director of Scotland's Finest Woods Awards
- Mr. Syd House MBE, Past Chair of the National Forest Agency
- Mr. Ian Price, Director, Woodland Trust Scotland
- Mr. Derek Robertson, CEO, Green Action Trust
- Mr. Mark Tennant, Chairman, Scottish Land and Estates

# Our Ambassadors

and more to follow!



I've always had a passion for trees.





# How?



# Stewardship

## *Planting trees*

Whips and saplings in schools and communities



The right tree in the right place



Plant Healthy



UK and Ireland Sourced and Grown (UKISG)

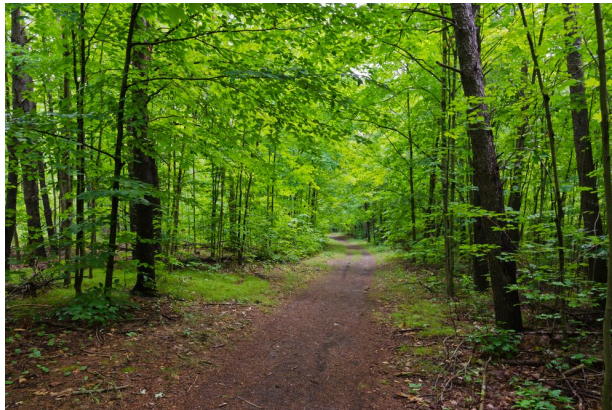


Quality over quantity

Majestic avenues



Community woodlands and groves



Large celebration trees



### Iconic institutions

- The National Trust Scotland
- St Andrews University
- The Crown Estates
- Historic Houses
- Inter-faith network



THE  
QUEEN'S GREEN  
CANOPY

THE PLATINUM JUBILEE 2022



# Conservation

## *Dedications*



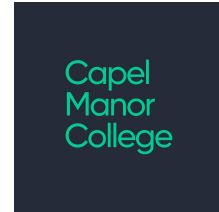
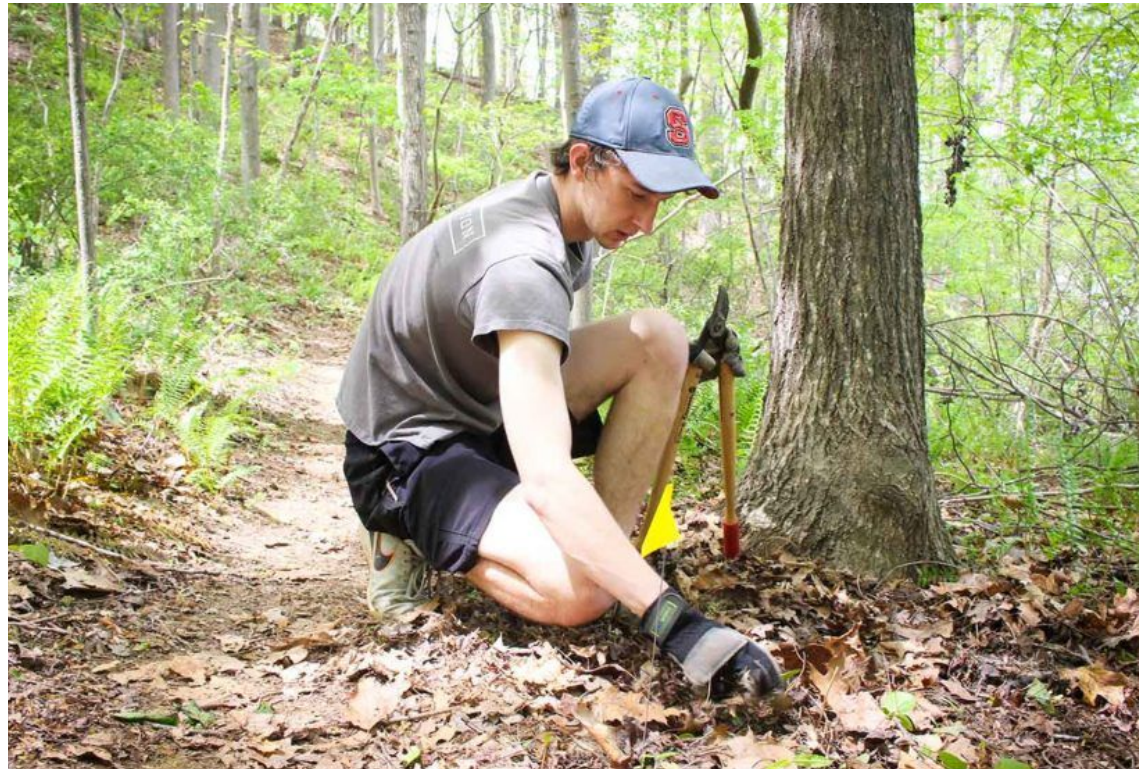
Ancient woodland at Coed Nant Gwernol



Fortingall Yew, near Loch Tay, thought to be the oldest living tree in Scotland



# Education and training



# Funding and donations



## Our fundraising

The Queen's Green Canopy is fundraising to support vital tree planting through delivery partners, such as Trees for Cities.

We have also secured corporate support from Platinum Supporters to cover our core costs.

## Donations

Members of the public can *Gift a Tree for the Jubilee*, donating for:

**Trees for Cities and Schools** - donating to deprived urban areas and urban schools

**Trees in Memoriam** - offering people the opportunity to remember loved ones. Donations will go towards supplying trees.

## Local fundraising

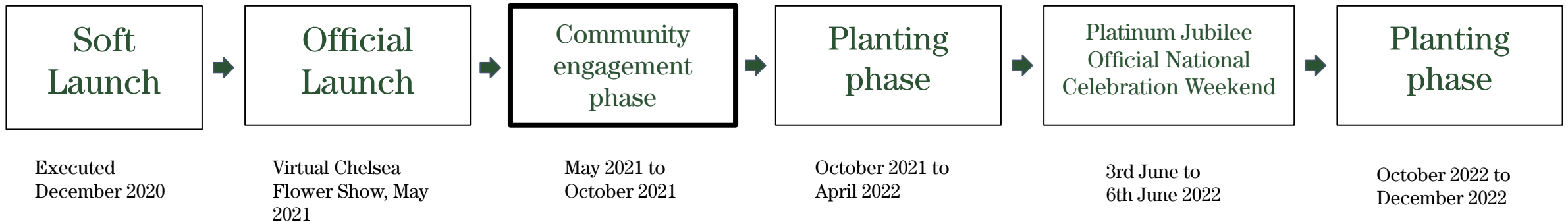
We are encouraging local fundraising for community tree planting projects.





# Timeline

To build interest and maintain momentum in the lead up to the official Platinum Jubilee celebrations in June 2022, there will be a phased campaign.



### TREE PLANTING SEASON IN:

06 Weeks 04 Days

The best time to plant trees is from October to March. From October you can pin your Jubilee tree on the QGC map. This gives you the summer to plan your tree planting project.

### ENVIRONMENTAL FACTS



British oak trees support an estimated 2,300 species, an incredible variety of wildlife



A mature tree can absorb up to 150kg of CO2 a year



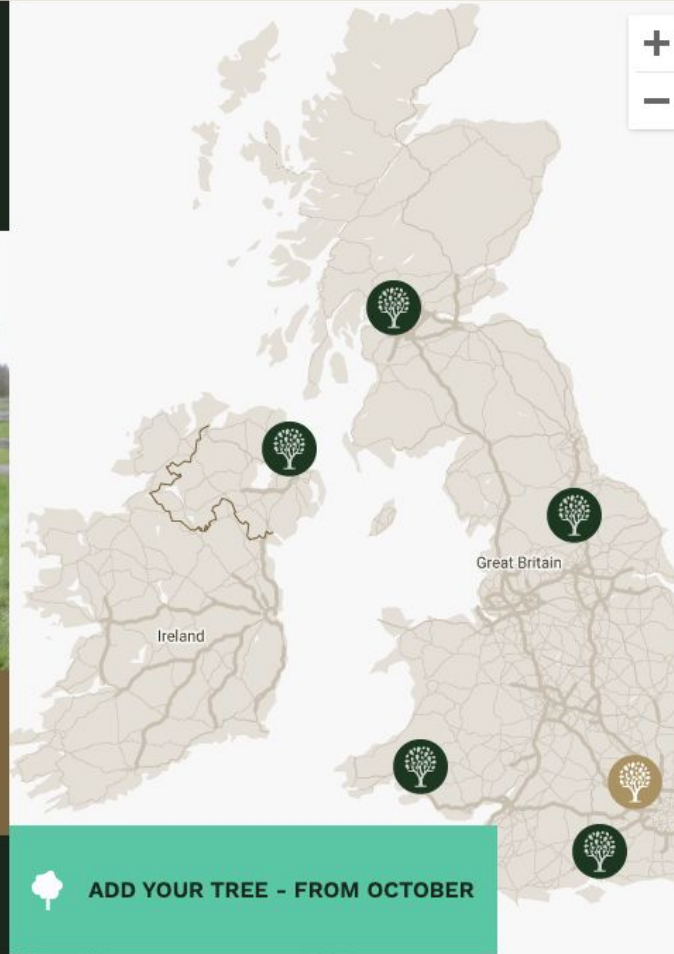
UK Green spaces remove up to 1.3 billion kg of air pollutants each year



Well-placed trees can help cool the air between 2 and 8 degrees in urban communities



THE QUEEN AND THE PRINCE OF WALES PLANT THE FIRST JUBILEE TREE





# Q&A

