

APSE SEMINAR

15th December 2022



**ENVIRONMENTAL
STEWARDSHIP GROUP**

Leading the bereavement sector to sustainability

**JON CROSS FIOD
ESG GROUP FACILITATOR**

WHO ARE WE?



WHY HAVE WE COME TOGETHER?

- **To help** the sector to understand and engage with the Climate Emergency
- **To act** as a focal point for the sector on Environmental issues
- **To provide** a space for engagement and dialogue
- **To listen** to concerns, understand barriers and help find common ground for all
- **To influence** thoughts on regulation and joined up thinking

WHAT ARE OUR OBJECTIVES?

- **Protect the environment**

- To take a series of measures to reduce existing and negative impacts by 2025

- **Promote continuous improvement**

- To establish an industry wide approach to driving positive change and innovation

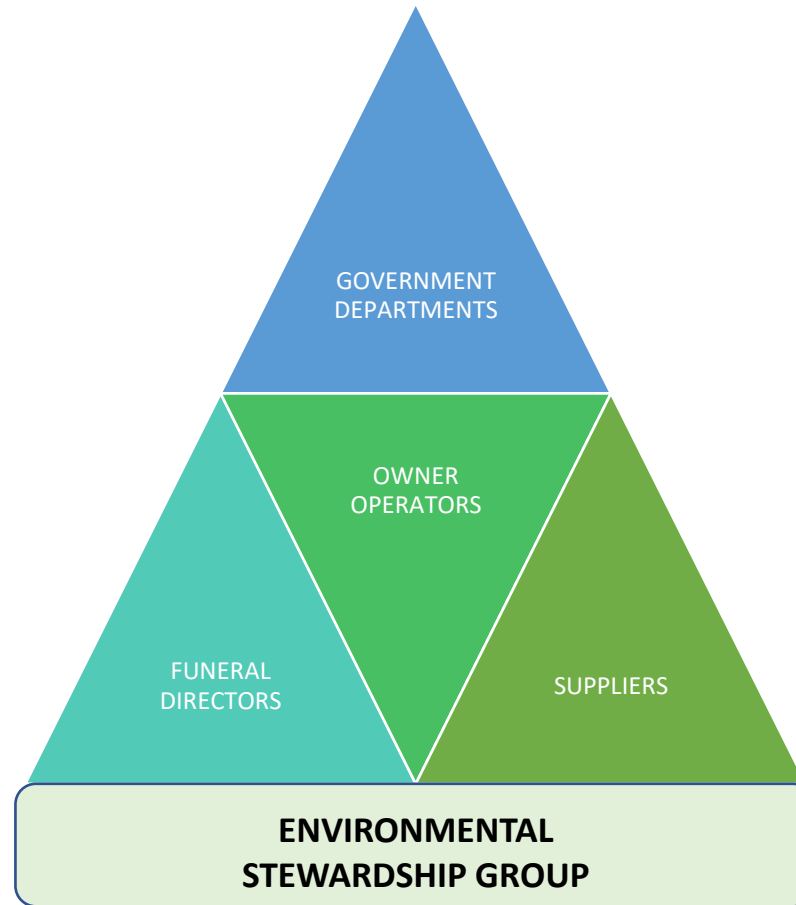
- **Shape regulatory requirements**

- To influence, legislation, guidance and advice that reflects the industry as a whole

- **Communicating commitment**

- To embed within the sector pro active and positive commitment to promoting the sectors actions and efforts.

HOW ARE WE VIEWING THE SECTOR?

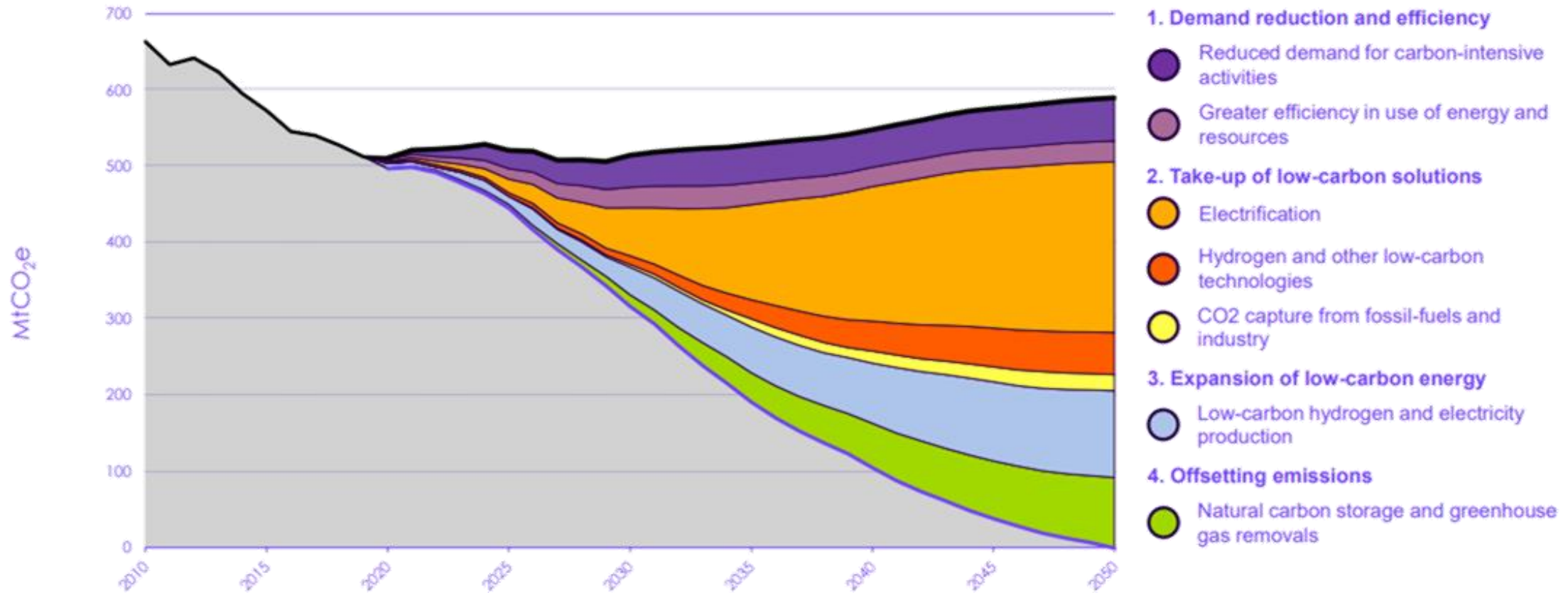


Net Zero

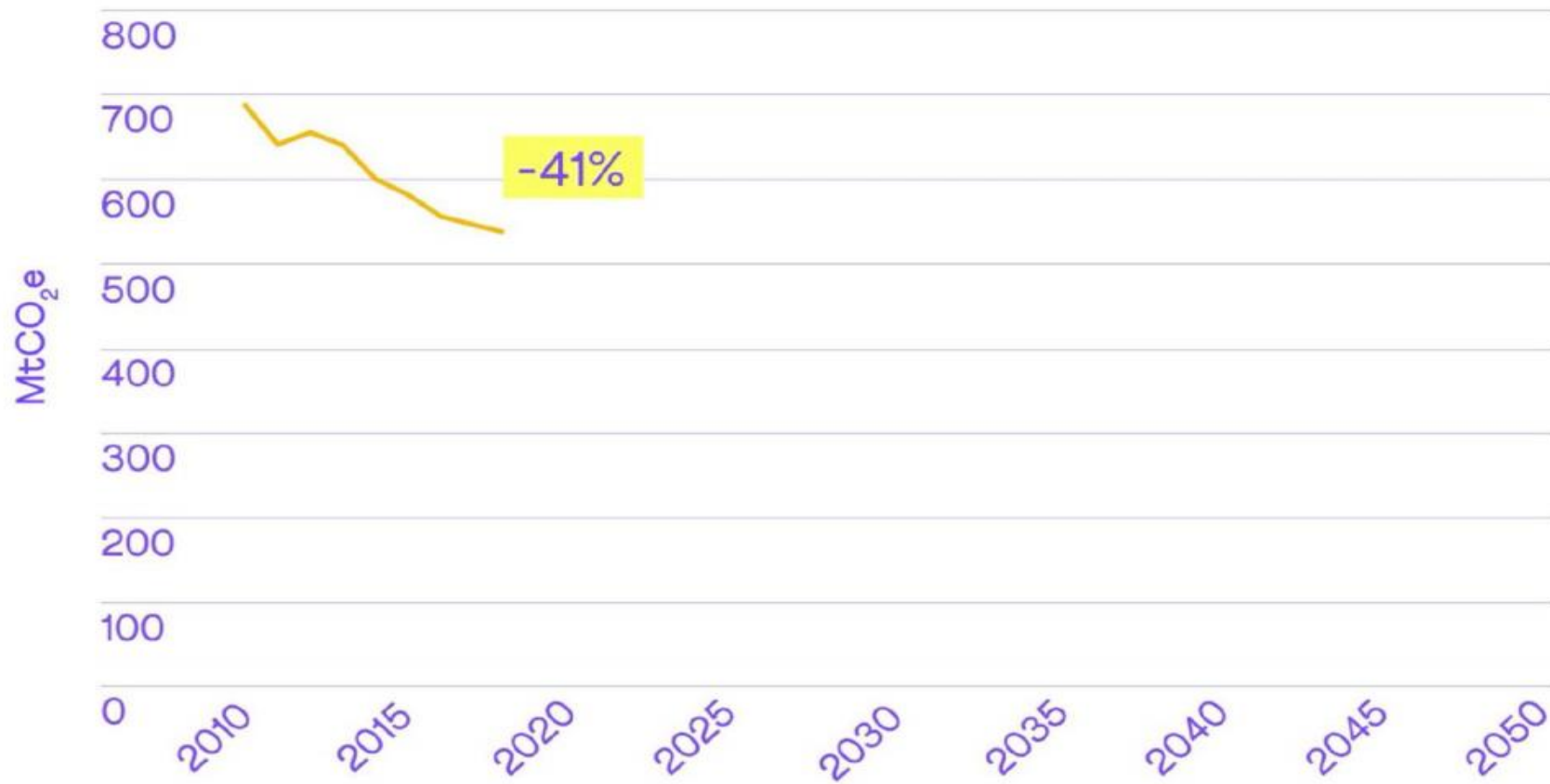
- Net zero refers to **a state in which the greenhouse gases going into the atmosphere are balanced by removal out of the atmosphere.**
- A **net-zero** gain of GHG in the atmosphere is achieved when the level of GHG emissions released into the atmosphere is equal to the amount removed
- Essentially, we reach net zero **when the amount of carbon dioxide we add is no more than the amount taken away.**

Emissions abatement on the balanced path

Meeting Net Zero requires actions across four key areas



What changes will we see on the recommended pathway

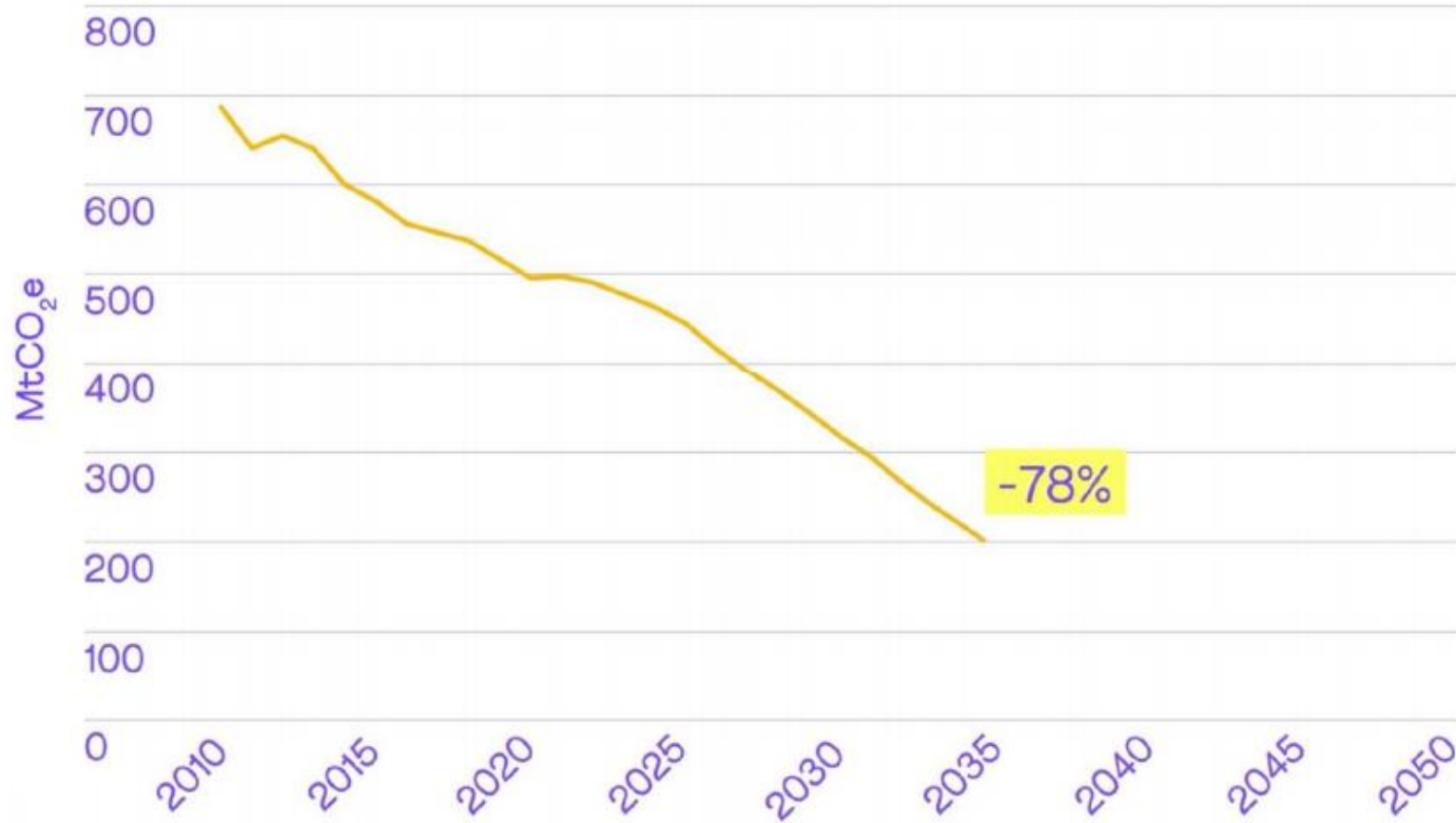


Key developments

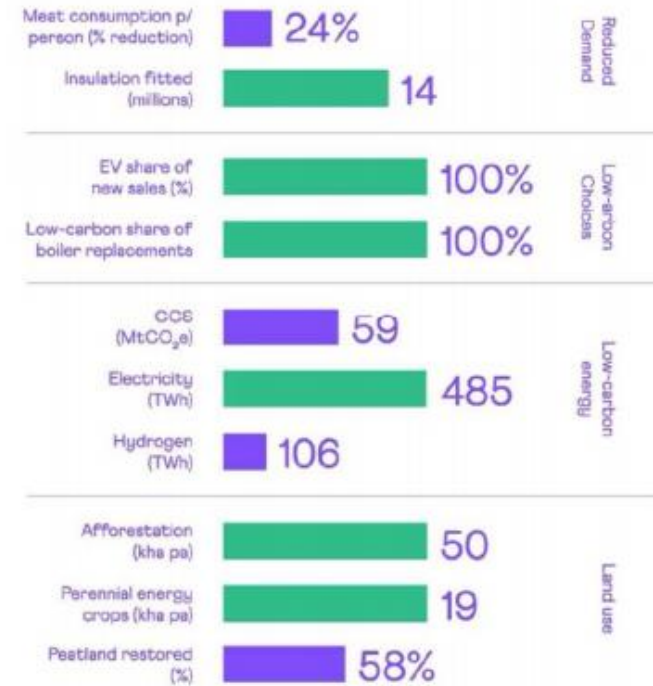
Meat consumption p/ person (% reduction)	0%	Reduced Demand
Insulation fitted (millions)	0	
EV share of new sales (%)	13%	Low-carbon Choices
Low-carbon share of boiler replacements	11%	
CCS (MtCO ₂ e)	0	Low-carbon energy
Electricity (TWh)	205	
Hydrogen (TWh)	0	
Afforestation (kha pa)	19	Land use
Perennial energy crops (kha pa)	0	
Peatland restored (%)	25%	

What changes will we see on the recommended pathway

2050



Key developments



Targets and timescales

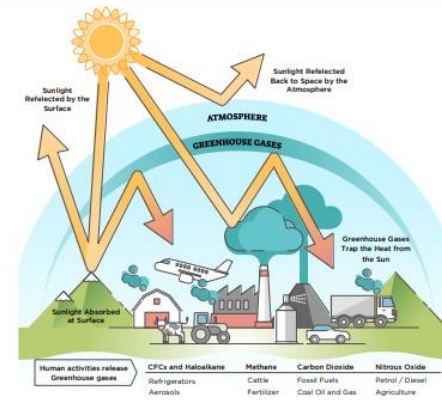
- In 2022 we had achieved 43% reduction in carbon emissions
- In 2025 we have to achieve and plan for -50%
- In 2030 we have to achieve and plan for -64%
- In 2035 we should be close to the finishing line -78%*
 - Original figure 80% for 2050
- In 2050 we have to be Carbon Net Zero – by Law!



Information on the sector



Greenhouse Effect



Key challenges associated with the Public Owner Operators of Crematoria and Cemeteries.



How do we get there?

- Where are you now?
- Climate emergency declarations?
- Satellite view as a Authority making progress?
- Out of 409 only 3 mentioned bereavement services
- Flying under the radar again
- Emotional subject
- Where to start

Starting point

- Carbon footprint
- the amount of carbon dioxide released into the atmosphere as a result of the activities of a particular individual, organization, or community
- Carbon Dioxide (CO₂) makes up the majority of Greenhouse Gasses (GHG) which is why it is the focal point.
- Science based targets (SBTs) or 3 scopes are globally recognised as providing the framework for achieving net zero by 2050

what are the scopes of carbon emissions?



scope 1

GREENHOUSE GAS EMISSIONS

Scope 1 emissions are direct greenhouse (GHG) emissions that occur from sources that are controlled or owned by an organization (e.g., emissions associated with fuel combustion in boilers, furnaces, vehicles).

SOURCE: EPA.GOV

SCOPE 1
Direct Emissions from Reporting Company

scope 2

GREENHOUSE GAS EMISSIONS

Scope 2 emissions are indirect GHG emissions associated with the purchase of electricity, steam, heat, or cooling and are a result of the organization's energy use.

SOURCE: EPA.GOV

SCOPE 2
Indirect Emissions from Upstream Activities

scope 3

GREENHOUSE GAS EMISSIONS

Scope 3 emissions are all indirect emissions (not included in scope 2) that occur in the value chain of the reporting company, including both upstream and downstream emissions.

SOURCE: EPA.GOV

SCOPE 3
Indirect Emissions from

Upstream Activities
Purchased Goods & Services
Capital Goods
Fuel & Energy Related Activities
Transportation & Distribution
Waste Generated in Operations
Business Travel
Employee Commuting
Leased Assets
and...

Downstream Activities
Transportation & Distribution
Processing of Sold Products
Use of Sold Products
End-of-Life Treatment of Sold Products
Leased Assets
Franchises
Investments

Decarbonisation plan

- Create a plan
 - A. Switch to a renewable energy source, as a quick first step to reduce carbon emissions.
 - B. Look at all your assets, buildings, infrastructure, equipment, plant, and vehicles to see what can be done to make them more energy efficient and reduce emissions.
 - C. Review your suppliers, manufacturing processes, delivery, materials, instances of embodied carbon, understand the carbon footprint allocated to your day-to-day operations.
 - D. Consider your operational requirements against your social and environmental commitments.
 - E. Undertake a cost benefit analysis and review it annually.

Action plan

Create and implement a Plan

- Establish a strong leadership presence.
- Create and drive vision, values, and associated policies.
- Focus on culture and effective communication.
- Develop credible metrics and effective governance.
- Set standards and be prepared to innovate.
- Above all commit 100% to the process

HOW CAN YOU PLAY YOUR PART?

- Learn more about the Climate Emergency
- Consider how this will affect you and your workplace
- Is there someone who has responsibility for these activities?
- Do you have an Environmental Policy or Policy Statement?
- Have you actively considered your Environmental Impact?
- Do your customers have a view on this aspect of your service?
- Find out who can help you with all of this.
- Above all ask the questions, educate those around you and, get engaged.

FINAL THOUGHTS

- “In a sector with a great degree of sensitivity around cultural change, the court of public opinion is changing fast, sustainability and environmental issues are at the forefront of market change, those who rise to this challenge will be at the forefront of market advantage, those who lag behind will be at a significant disadvantage”

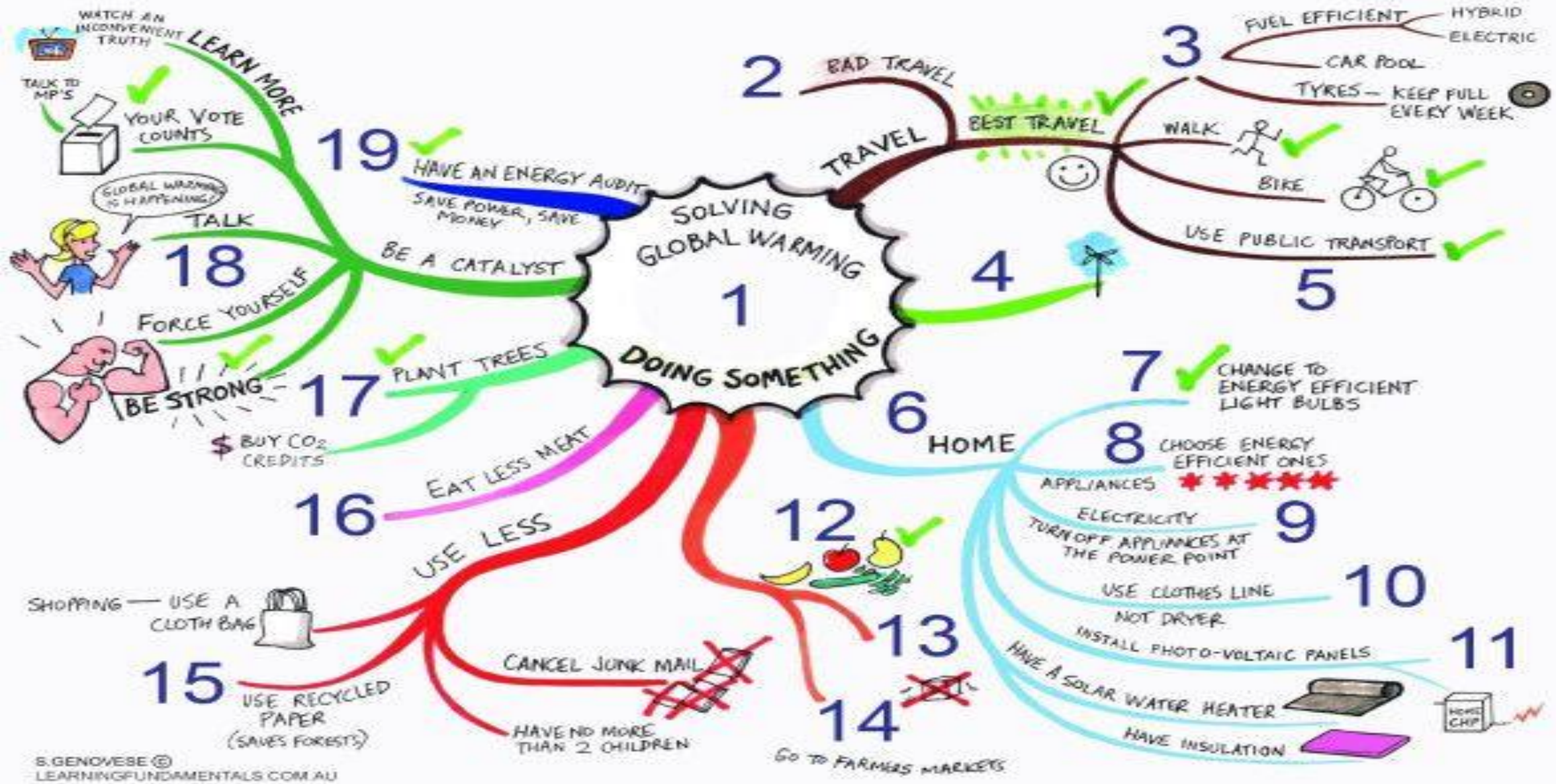
Richard Macdonald, Deputy Chair, The Environment Agency

- “Through partnerships and good communication and being curious we will help understand the challenges we all face better and can work to achieve the optimal results we seek and ensure that we minimise the impact of the inevitable change that’s coming through the climate emergency.”

Lee Rawlinson Director of Regulated Industry The Environmental Agency

“The biggest threat to the environment is the belief that someone else will save it.”

Robert Swann OBE



S.GENOVESE ©
LEARNINGFUNDAMENTALS.COM.AU

Thank you

07939 120 090

info@environmentalstewardshipgroup.org.uk

www.environmentalstewardshipgroup.org.uk



Leading the bereavement sector to sustainability
