


APSE Northern Ireland Seminar - 14th June 2019

Striding Ahead on Environmental Commitments



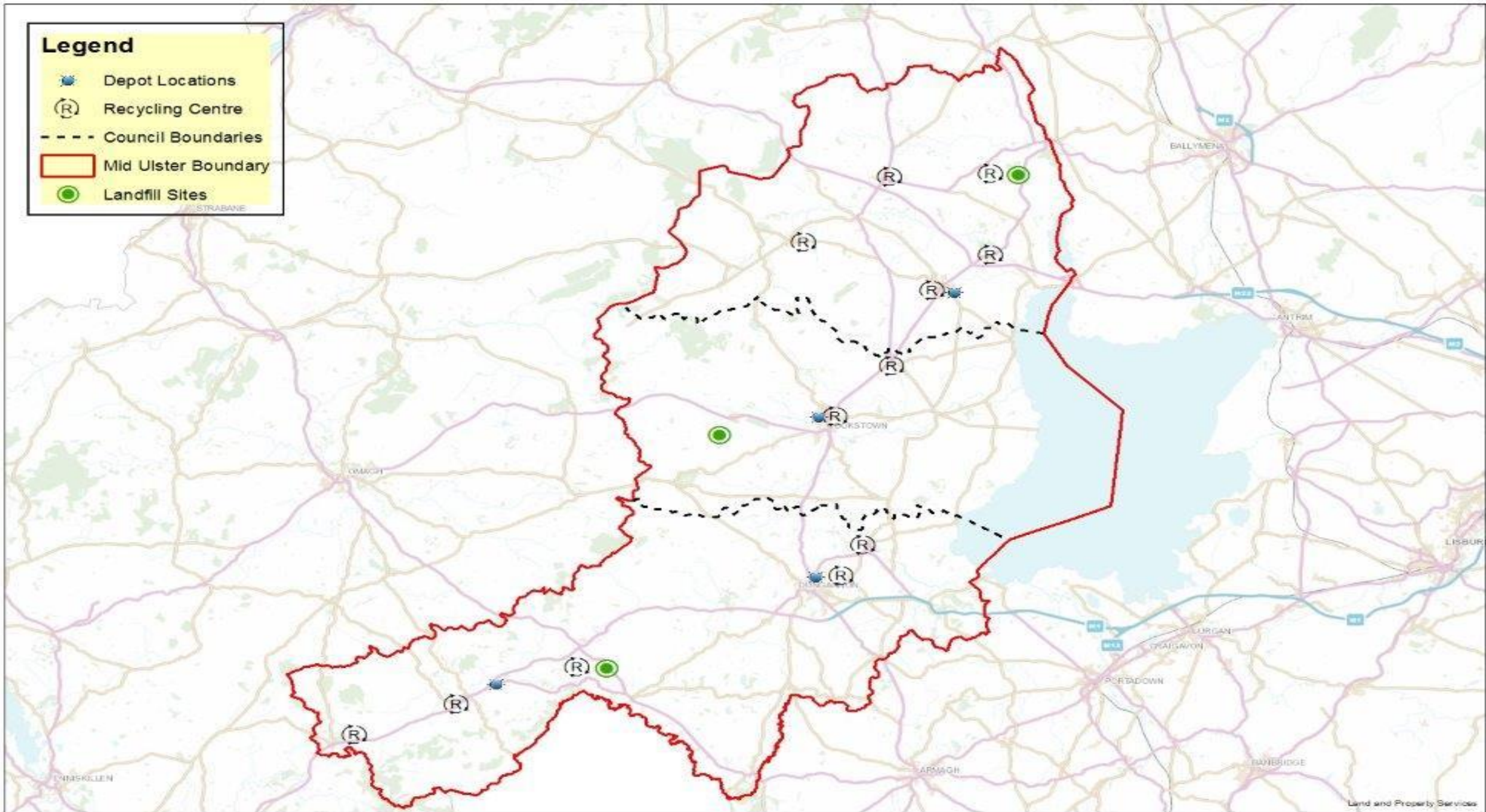
Mark McAdoo
Head of Environmental Services
Mid Ulster District Council

Environmental Services - Mid Ulster

- Annual Expenditure - £12m
- Employees - 215 No.
- Responsibilities include:
 - Refuse and recycling kerbside collections (55,000 households)
 - Provision of Recycling Centres
 - Waste transfer facilities
 - Landfill site management/aftercare
 - Waste recycling, treatment and processing
 - Street cleansing and removal of fly tipping
 - Environmental Education and Awareness

Legend

- Depot Locations
- Ⓡ Recycling Centre
- - - Council Boundaries
- ▭ Mid Ulster Boundary
- Landfill Sites



W D F ?

$$(L_D \times RB\%) + (L_{TH} \times 0) + (L_{MBT} \times (RB\% \times MBT_{AF})) + (L_{OT} \times RB\%) + (Div_R \times RB\%)$$

= B L A C M W L !



Quarter of Northern Ireland homes unhappy with council recycling service



Homeowners want all councils to 'commingle' household recyclables and glass in the same bin (stock photo)

By Mark Bain
May 10 2019



CIWM

Journal Online



LATEST NEWS FOR RESOURCES & WASTE PROFESSIONALS

04 June 2019 • EMPOWERING YOU TO GROW: Join CIWM today to access the tools you need

The CIWM Journal is evolving

HOME NEWS ARCHIVE MAGAZINE ARCHIVE OPINION VIDEO ADVERTISING MVO

Northern Ireland Recycling Collections Need "Simplicity & Convenience"

Posted on 2 May 2019 by Darrel Moore





The Council has exceeded the EU's Directive of a 50% household recycling rate nearly 6.3%, two years before the 2020 deadline.

Mid Ulster out in front for recycling practices

By **STAFF REPORTER**
news@midulstermail.co.uk
@midumail

A recent NI-wide recycling poll has revealed that more than three quarters (78%) of householders in Mid Ulster say they recycle everything they possibly can, compared to an NI average of 74%.

Some 72% of respondents in Mid Ulster said they are hap-

py with how the council has asked them to recycle, compared to an NI average of 68%.

A total of 87% of households in Mid Ulster, said they are happy with their current glass collection method, which allows people to place glass in the same bin as other mixed dry recycling. Almost two fifths (37%) admitted that they would recycle less if they had to recycle glass separately, as is the case in several council areas in Northern Ireland.

The survey showed that

in council areas, such as Mid Ulster, where household recyclables (plastic, paper, card etc) can be 'commingled' with glass in the same bin, 80% were happy with their recycling scheme, compared to 42% of those in council areas that did not offer this service.

Joseph Doherty, managing director of Re-Gen Waste Ltd said: "These survey results indicate that prioritising simplicity and convenience is the best approach to ensuring a high level of household re-

cycling. What other councils should be doing is taking learnings from Mid Ulster Council, the top performing recycling council in Northern Ireland.

"Their waste recycling collection is commingled with glass and where other councils are operating several waste collections within their area, Mid Ulster has exceeded the EU's Directive of a 50% household recycling rate nearly 6.3%, two years before the 2020 deadline."

A very long time ago in a galaxy far a
away ...





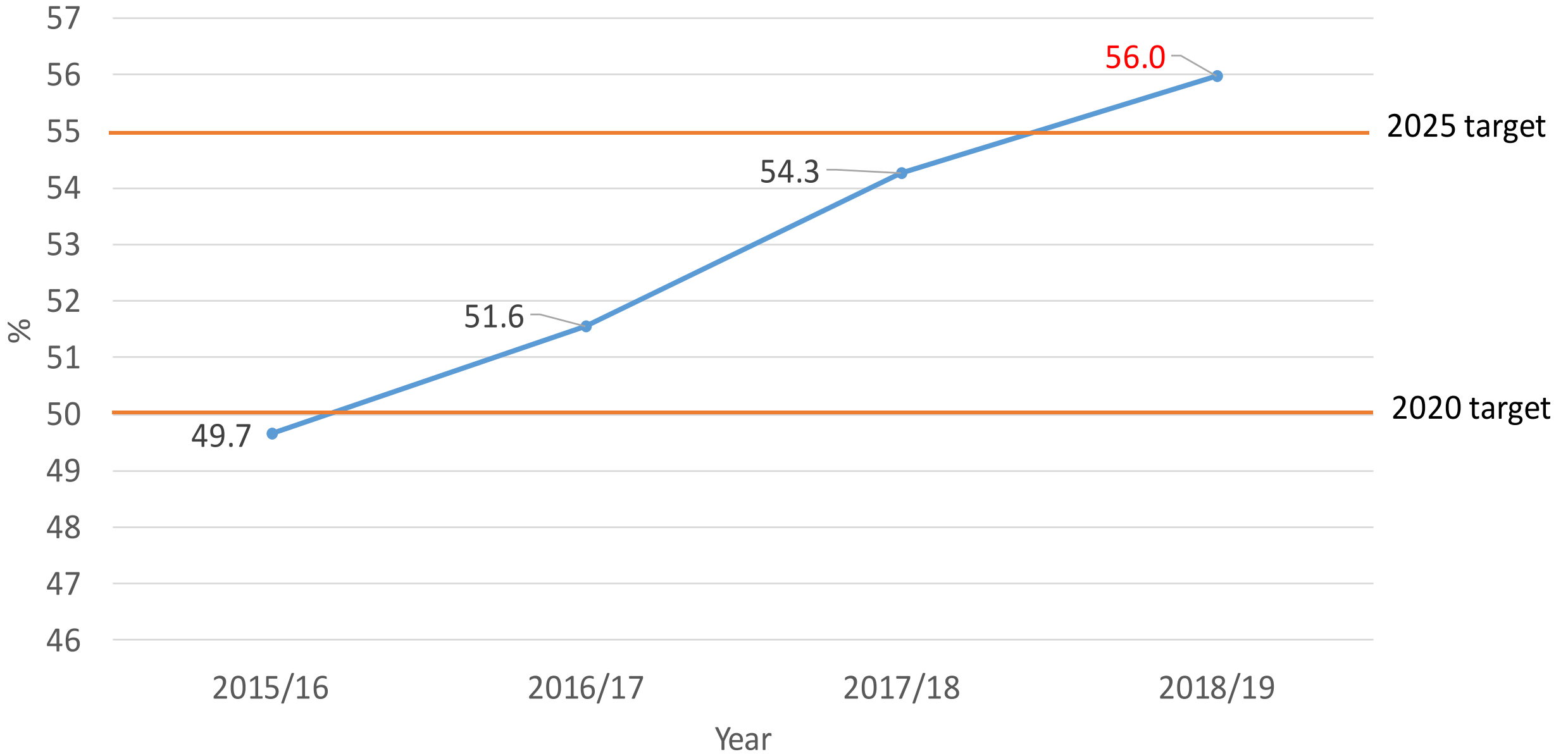
B P E O



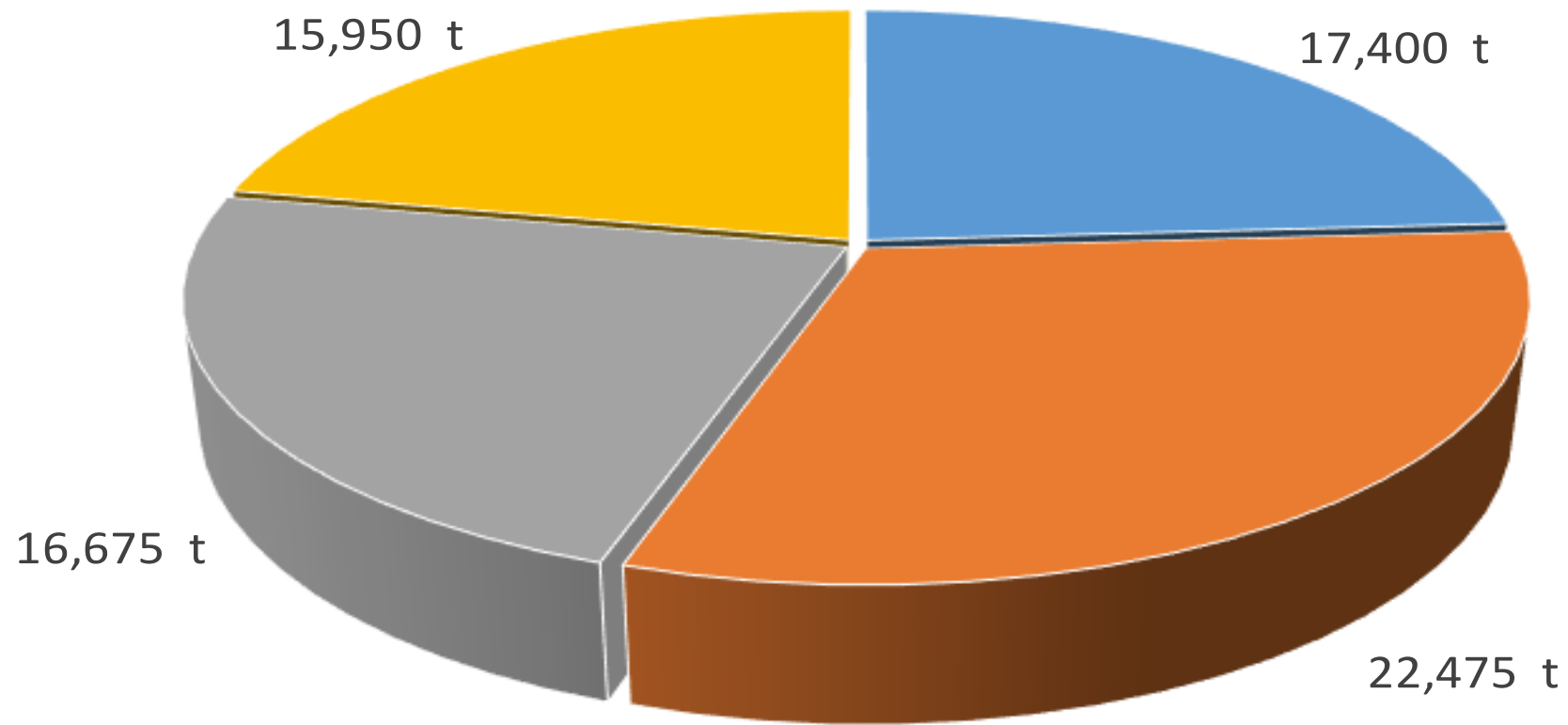
***“DO OR
DO NOT,
THERE IS
NO TRY.”***



MUDC Recycling Rate



2018 Breakdown



■ Recycled ■ Composted ■ Recovered ■ Landfill

First Term Harmonisation

- Pay and Grading exercise completed
- Amended start and finish times
- Flexibility of working across depots
- Agreement on bank holiday working
- Alignment of Recycling Centre opening hours
- Review/reduction of all overtime working
- Refuse collection route optimisation....



Show Layers

OSM Tiles

Locations
 No Collection Hazards

Rurality
 Roads
 Lines
 Rate
 Yield
 Type

Routes Arrows Rep's
 Streets Edges
 Driving Instructions
 Boundary Polygons/Lines
 GPSTrail

Find

Update

Round (blank=Any)

With Round

1

Move same USRN

Sensitivity

Rate %

Yield %

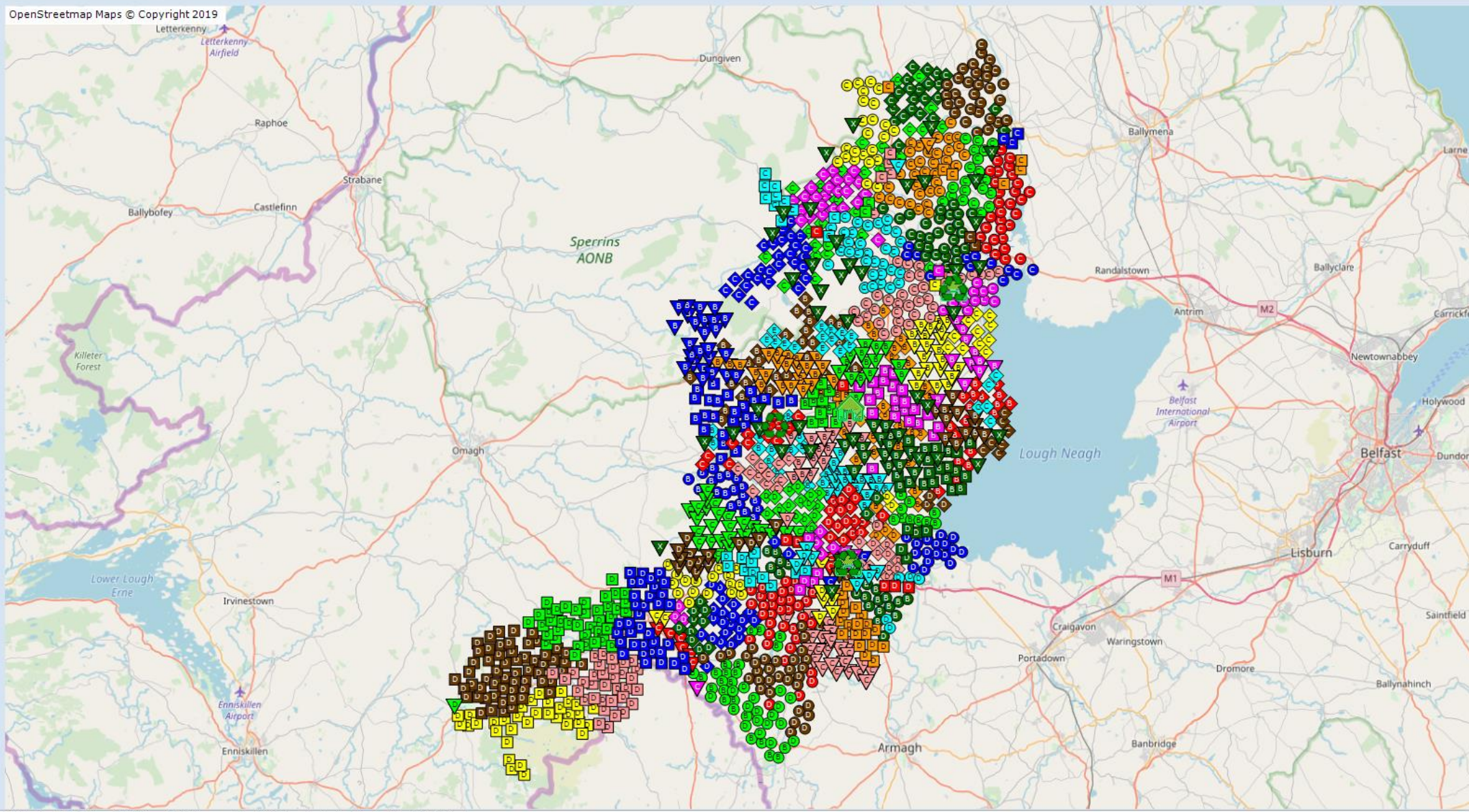
Speed %

You can enter a single word or multiple word/phrases in quotes separated by operators &=AND, |=OR, !=NOT

Performance Display All in Table Display Selected

Target Time (hrs) 7.5 Ave Time (Selected)=84.95hrs

Round		Time	Mileage	Lo
01:Cks_MP_Mon		4.5	79.99	144
02:Cks_MP_Tue		5.29	112.5	97
03:Cks_MP_Wed		5.76	106.43	181
04:Cks_MP_Fri		6.02	115.82	158
07:Dgn 18T Wed		7.97	144.3	351
08:Dgn 18T Thur		4.24	57.74	302
100:Dgn 18T Tue		5.29	63.99	402
102:CN1_Mon W...		6.73	62.97	890
103:CN1_Tue W...		6.93	68.49	888
104:CN1_Wed ...		6.51	65.16	816
105:CN1_Thu W...		6.7	62.39	888
106:CN1_Fri Wk1		6.2	60.87	783
107:CN2_Mon W...		6.71	82.56	568
108:CN2_Tue W...		8.3	147.23	388
109:CN2_Wed ...		8.08	141.91	387
110:CN2_Thu W...		8.27	144.01	407
111:CN2_Fri Wk1		6.31	77.44	533
112:CN3_Mon W...		8.45	144.78	433
113:CN3_Tue W...		0.87	15.15	3
114:CN3_Wed ...		6.59	111.75	337



79045 Easting 404358 Northing: Latitude 54.88068 Longitude -6.76923 :Scale 141.45km 87.89miles: File C:\Program Files (x86)\EasyRoute_Pro\Design Files\29.5.19\final.csv

Bins: 74776 Bins : 1121.64 (Tes) Yield : 103 Rounds Min Time 0.87 Max Time 7981.7 : 375.2 (hrs) Total Collection Time : 8749.8 (hrs) Total Round Duration: 208450.7 (miles) Total Round Length :199 Average Rate:Average Distance to a depot 7.3miles:Average Distance to a reception 7.8miles:: Tonnes: Oaks Road 502 Ballyronan Road 457 Magheraglass Landfill 163: Max Rate 240: Min Rate 240



2630



Comhairle Ceantair
Lár Uladh
Mid Ulster
District Council

ZOLLER
SLF



Your bin collections are changing...

To help you get used to the new collection scheme, the calendar below shows what colour bin(s) will be collected on which day for the next few months.

If you are in any doubt, don't forget you can check your collection day on line at www.midulstercouncil.org/binchanges or why not download the **Bin-ovation App** to remind you? The app will also help you to remember what you can put in your blue, brown and black bins.



● Blue bin Collection
 ● Black bin Collection
 ● Brown bin Collection

JANUARY 2017

Monday 29 ●

FEBRUARY 2017

Monday 5 ● ●

Monday 12 ●

Monday 19 ● ●

Monday 26 ●

MARCH 2017

Monday 5 ● ●

Monday 12 ●

Monday 19 ● ●

Monday 26 ●

APRIL 2017

Monday 2 ● ●

Monday 9 ●

Monday 16 ● ●

Monday 23 ●

Monday 30 ● ●

Key: Mon Cycle A

Should you require this information in an alternative format please contact 03000 132 132 or email environmentalservices@midulstercouncil.org

When is my bin collection day?

Check your bin collection day in Mid Ulster. If you are unable to find your address please contact us on environmentalservices@midulstercouncil.org

48 TORRENT VALLEY, COALISLAND ✕

◀ Previous Month

48 TORRENT VALLEY,

Next Month ▶

Monday	Tuesday	Wednesday	Thursday	Friday	Saturday	Sunday
10th September	11th September	12th September	13th September  Brown Collection  Black Collection	14th September	15th September	16th September
17th September	18th September	19th September	20th September 	21st September	22nd September	23rd September



ONLINE SERVICES

[Online Building Control Applications](#)[Bulky Waste Collections](#)[Caravan & Camping Site Licence](#)[Certificate of Fitness \(Housing\)](#)[Commercial Waste Payment](#)[Leisure Services Online Booking](#)[Dog Licences](#)[Entertainment Licences](#)[Event Hire of Parks Facilities](#)[Food Premises Approval](#)[Food Premises Registration](#)[Guard Dog Kennels Registration](#)

Commercial Waste Payment

Please enter your Commercial Waste customer code and name below to retrieve your account information.

If you have forgotten your log in details please email Environmental Services on environmentalservices@midulstercouncil.org or telephone on 03000 132132.

Customer code:

Name:

SERVICES

Bulky Waste Collections

From 1 April 2018, a nominal £5 charge is payable for our bulky waste collection service. We will still collect up to 3 items.

Examples of what we will collect

Cookers, fridges, carpets, suites of furniture and mattresses (please note that for health and safety reasons, mattresses must be covered in plastic)

Examples of what we won't collect

Fixtures and fittings of a house like bathroom suites, oil tanks, garage or internal/external doors, garden waste or general waste (e.g. bin bags).

To request a collection simply complete and submit the form below.

We aim to collect your items within 14 days of receipt of payment.

Name:

Please enter your name

Address:

Town/Village:

Postcode:

Tel No:

E mail address:

Item 1 for collection:

Item 2 for collection:

Item 3 for collection:

Please note that we will collect a maximum of 3 items and we will only be able to collect the items you have listed. If you are asking us to collect a MATTRESS, for health and safety reasons, ALL MATTRESSES MUST BE COVERED IN PLASTIC. Items for collection to be presented at the front edge of the property. Please note that our staff are not permitted to enter houses, garages, sheds or other buildings to collect items. Please indicate if you have a dog at the premises:

 Yes No

If you have a dog, please keep it under restraint on your collection day (i.e. in the house or secured in a kennel)

Security code:

Enter security code:

[Abandoned Cars](#)[Allotments](#)[Bins & Recycling](#)[Are you a Recycling Hero?](#)[Brown Recycling Bins](#)[Blue Recycling Bins](#)[Bulky Waste Collections](#)[Bulky Waste Collections](#)[Buying A Bin](#)[Bin Changes: Magherafelt Area](#)[Commercial Waste Disposal At Recycling Centres](#)[Commercial Waste Services](#)[Download Our Bin App](#)[Recycling Guides](#)[Love Food Hate Waste](#)[Recycling Centres](#)[Recycling For Schools](#)[Textiles Recycling](#)[When is my bin collection day?](#)[Biodiversity](#)[Births, Deaths & Marriages](#)[Building Control](#)[Elections: Register To Vote Online](#)[Consumer Protection](#)[Dogs & Animal Welfare](#)



JCB

TELETRUK

104

LSM
www.lsm.com



pendlebury eyecare

LXZ 9719

SALE

HELLO

WELCOME TO
KIDNEY CLOTHING

The Man
We b

Hako





Bag it & Bin it

Please clean up after
your dog



Maximum penalty
£500



Comhairle Ceantair
Lár Uladh
Mid Ulster
District Council

Thoughtless Litterers

We're watching you!



Use a bin or face a
maximum fine of **£1,000**



Comhairle Ceantair
Lár Uladh
Mid Ulster
District Council

Bin-ovation

WHICH BINS?

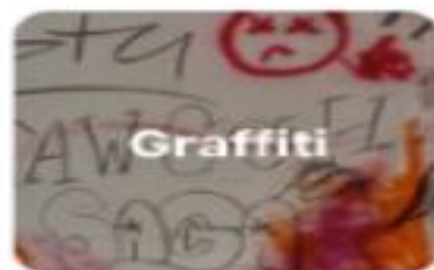
NEWS/INFO

REPORT IT

MORE

Report issues directly to your council

Here are some issues you can report:



REPORT IT

For waste-related issues you can

[Contact your council directly](#)

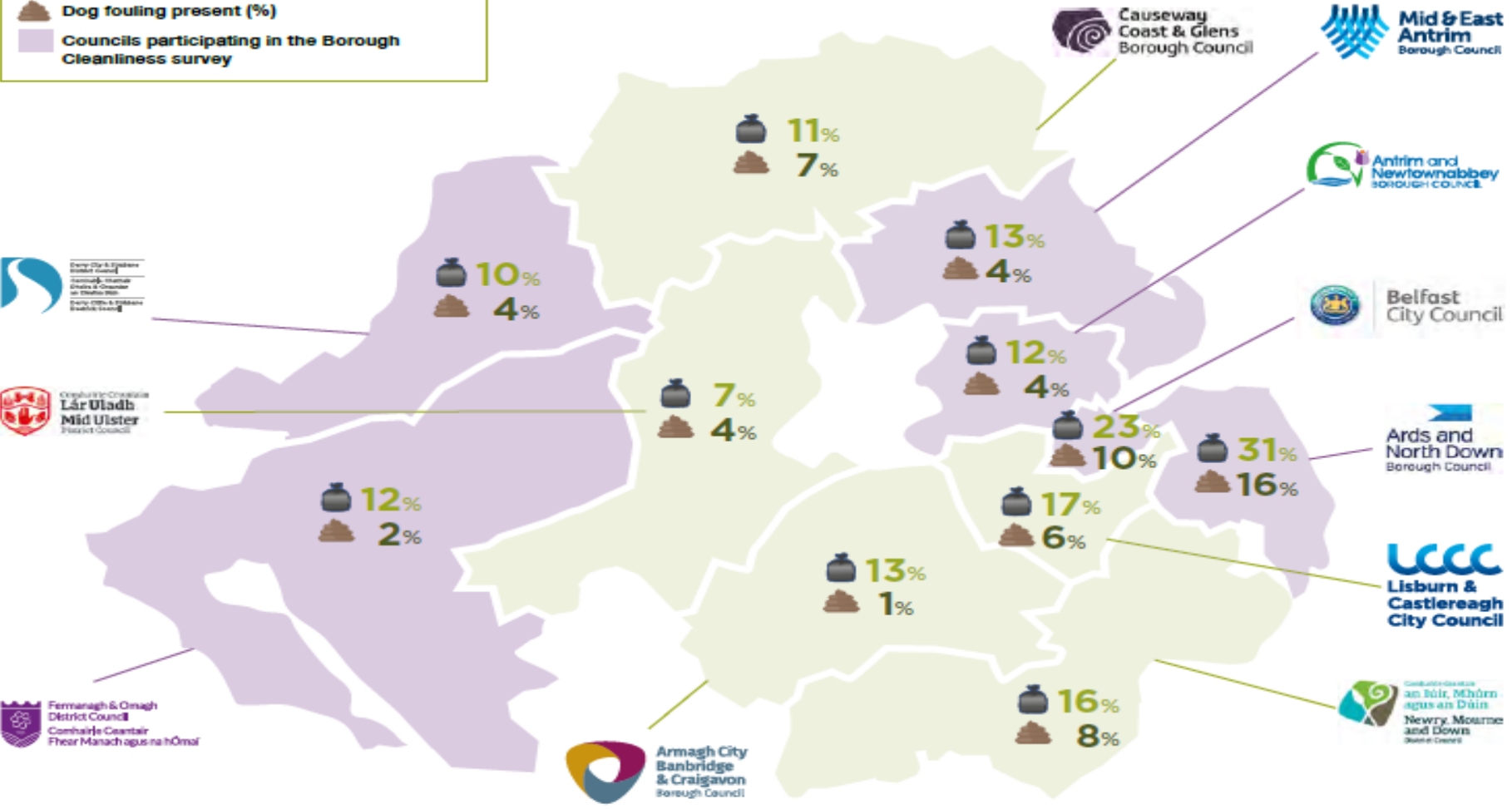
Mapped survey results for each Council

Transects badly affected by litter or dog fouling

The percentage of transects which fall below the required standard for litter, and the percentage of transects on which dog fouling was observed in each Council area.

KEY

- Litter including dog fouling (%)
- Dog fouling present (%)
- Councils participating in the Borough Cleanliness survey



Dog fouling

The improvement in rates of dog fouling across the eight different land uses has been one of the big success stories over the last two years. This year, figures have dropped in all areas apart from Main Road and High Obstruction Residential, although it should be noted that in both of these land uses the 2017/18 figures were still lower than those from 2015/16.

While High Obstruction Residential transects showed the highest incidence rate of dog fouling, it was actually recreational areas which appeared to suffer the most from the cluster effect. Transects affected by dog fouling showed an average of 1.49 dog fouls across the eight land uses, whereas those in recreational areas alone had 2.25 dog fouls. This may be the same dog using the same spot repeatedly, or the presence of dog fouls may be signalling to other dog walkers that they don't need to pick up after their own dog.

There have been successful behavioural change, or nudging campaigns run by various Councils to directly address the issue of dog fouling. Keep Northern Ireland Beautiful has produced a number of posters to help with these initiatives, which are now available upon request. See our website for details.

AVERAGE FOR ALL OF NI:

- 15%
- 6%

Corporate Improvement Objective

“To help manage our waste and environment by reducing the amount of waste going to landfill”



Award new
residual
waste
contract

Close/cap
landfill
sites

Build new
waste
transfer
station





Drumcoo Recycling Centre

Drumcoo
Recycling Centre

10

Site Users

Service
Vehicles

Site Office

Children to be kept in Vehicle
Commercial waste charges apply
No Asbestos No Tyres
No Clinical Waste

Keep Left





WISHNI
IMPROVING HEALTH AND SAFETY STANDARDS



In partnership with

hse ni
CONTROLLING RISK TOGETHER



WISHNI
AMBASSADOR

Wishes Health, Safety & Health Forum
Manufacturing sector

Mid Ulster Council
The Mayor of

Ambassador

Wishes Health, Safety & Health Forum
Manufacturing sector

Wishes Health, Safety & Health Forum
Manufacturing sector

hse ni

No food waste please!

Remember to use your brown bin
for food waste all year round

Call 03000 132 132

www.midulstercouncil.org/recycle



Comhairle Ceantair
Lár Uladh
Mid Ulster
District Council



Make a difference
Please put food in your **brown bin**
not your **black!**



www.midulstercouncil.org/recycling





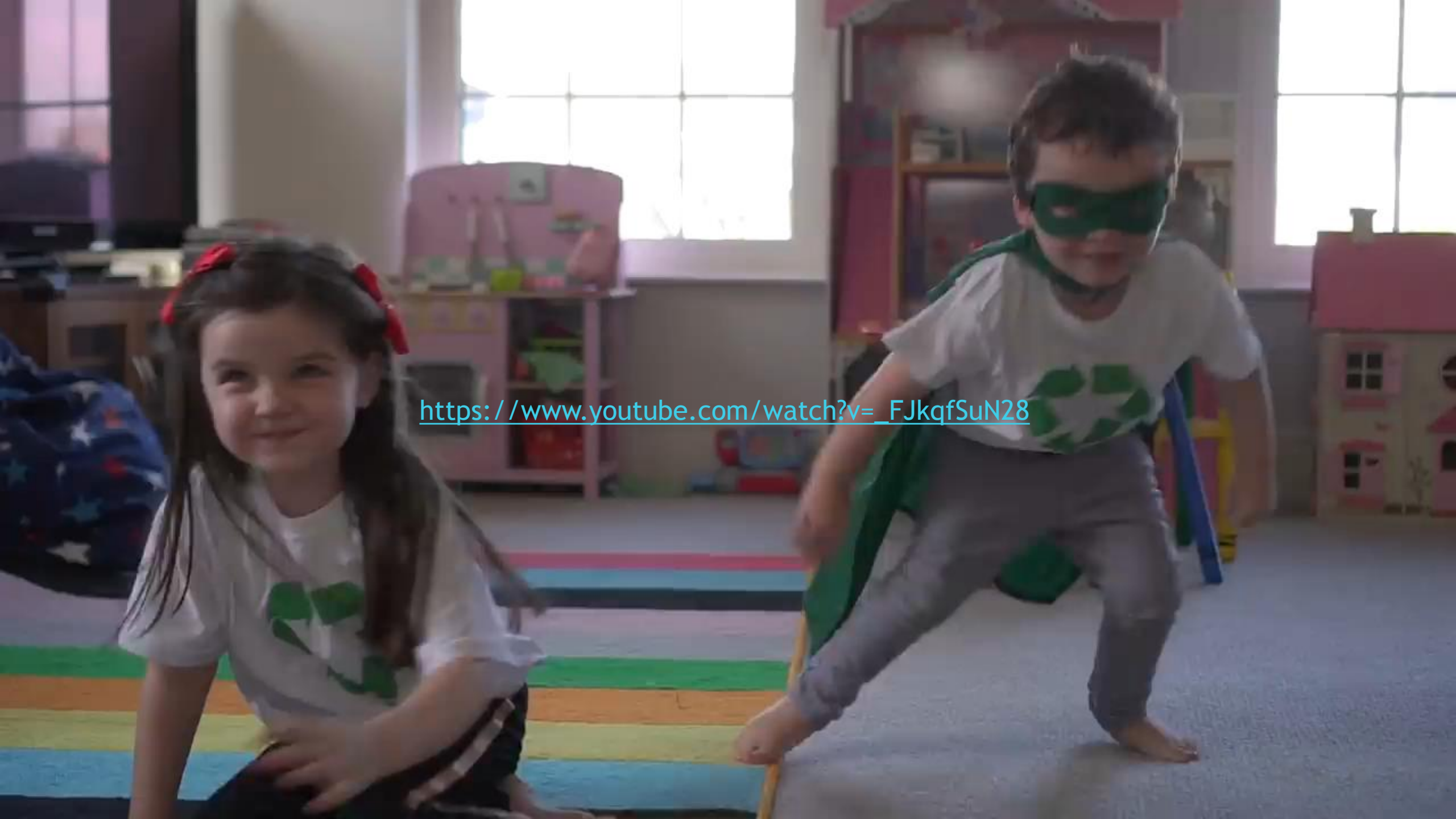
Zero or Hero?

Are you a Recycling Hero?

Take our online quiz and find out!

#RecyclingHero
www.midulstercouncil.org/recyclinghero





https://www.youtube.com/watch?v=_FJkqfSuN28