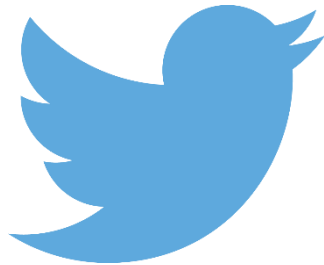


**Be part of the conversation!**  
**Follow APSE on Twitter and LinkedIn**



**@apseevents**  
**@apsenews**



**@APSE - Association for  
Public Service Excellence**

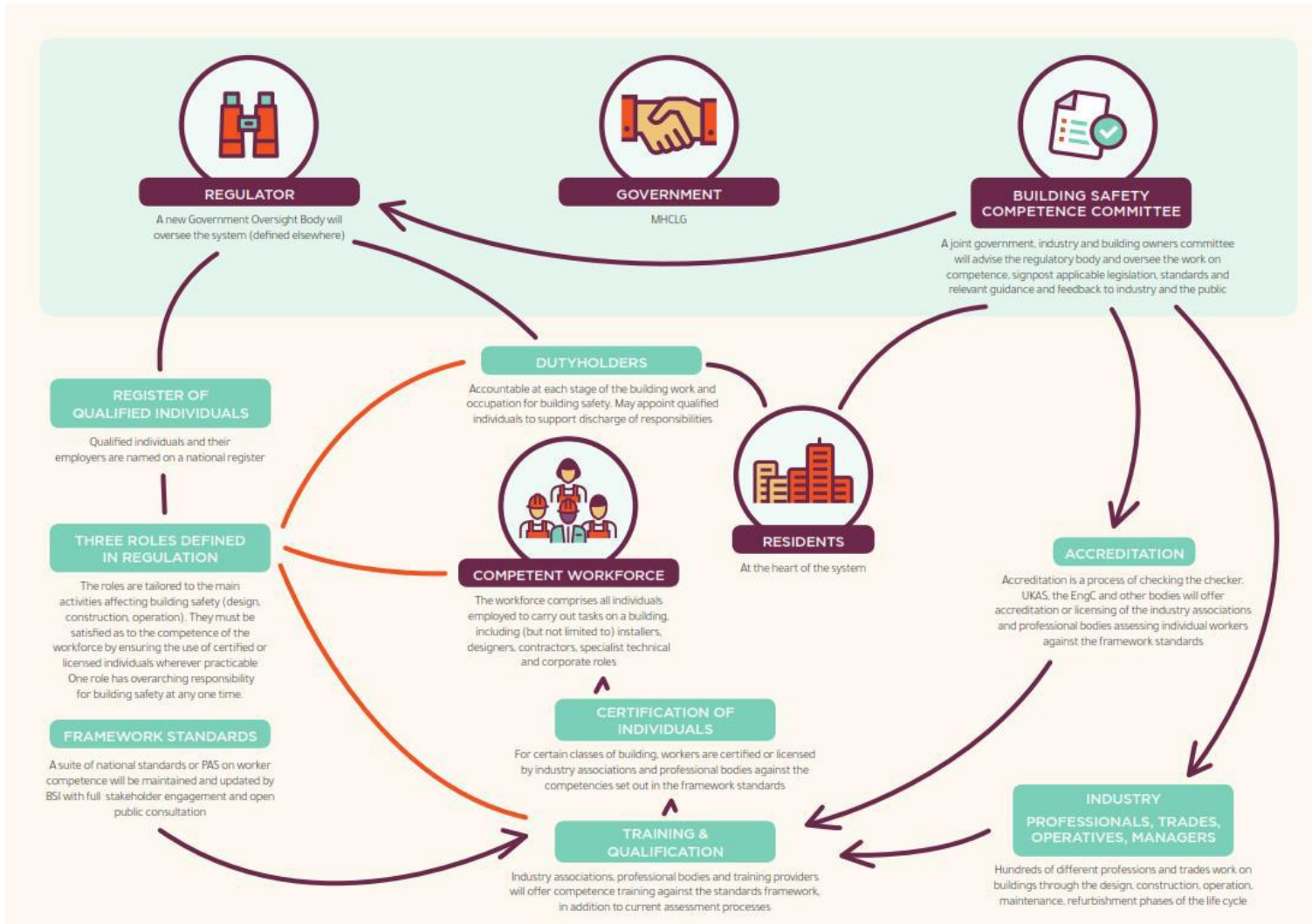
# **Future Standards and Regulations**

Colin McInnes, APSE Associate

# Session Overview

- Management of High Rise Buildings
- Part B Building Regulations
- Part L and F Building Regulations
- Retrofit Standards Domestic and Non Domestic

A radical and wide-ranging set of measures to improve the competence of those who design, construct, inspect, maintain and operate higher risk residential buildings (HRRBs) and make them safer for the public has been set out today by a cross-industries group backed by Government, the Industry Safety Steering Group and Dame Judith Hackitt



# Part B Building Regulations

- Consultation on lowering the height of buildings where sprinklers should be used to from 30m to 18m
- Classification of materials for refurbishment in high rise buildings changed to reflect consultation results
- Future changes may be pending

# Part L Building Regulations

- Delivery of the NZEB Target, and increase uptake in renewable energy potential in new build market
- Increased targets for new build, including carbon targets, energy consumption targets, and primary energy targets
- Move to deliver a fabric first approach and better quality delivery on site

# Fabric First Approach

Priority - Reduce Energy



Secondary – Improve Efficiency



Final – Lower ## carbon and renewable



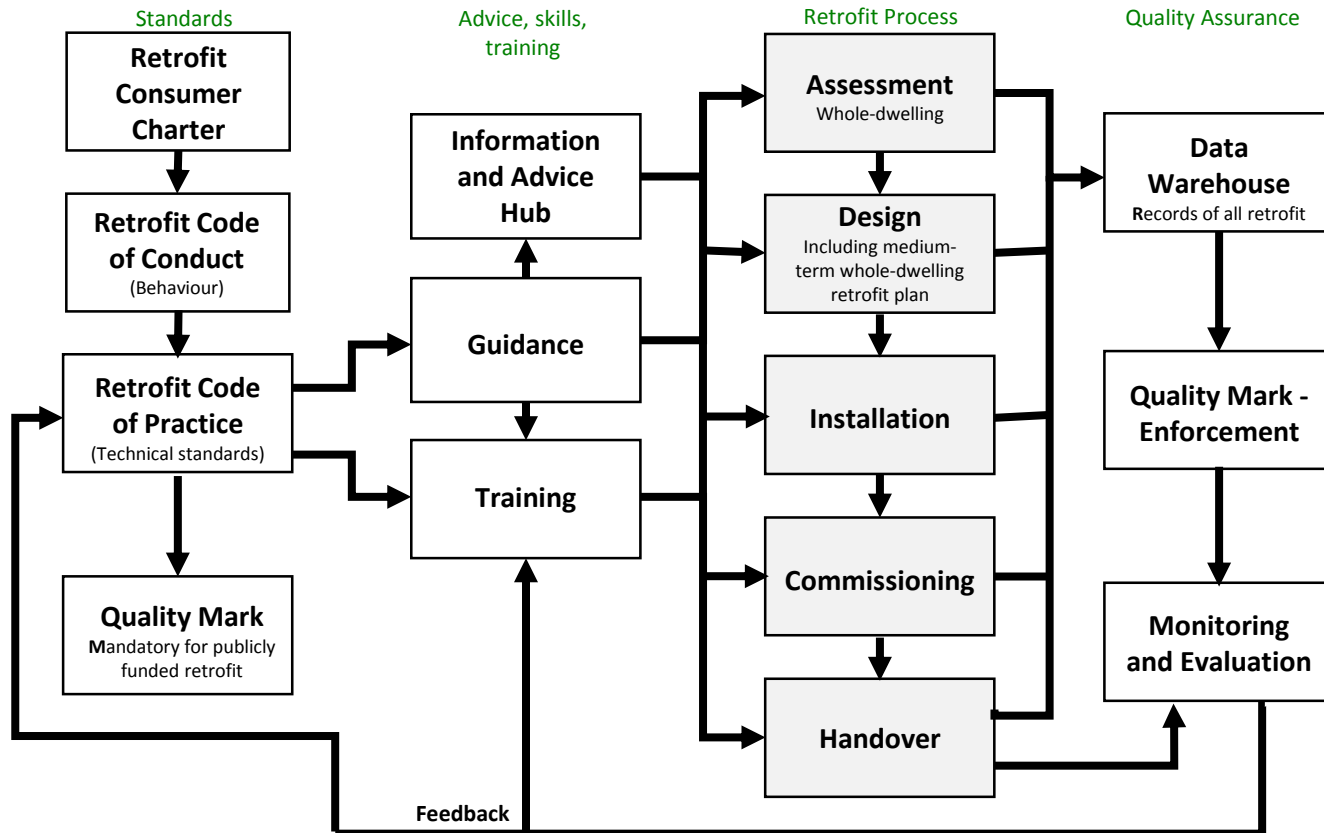
# Part L 1B

- Reflecting the risks of delivering thermal improvements to buildings susceptible to moisture risk ( special considerations)
- Reflect the approach in BS5250:2019/20, principles of the 4 C's

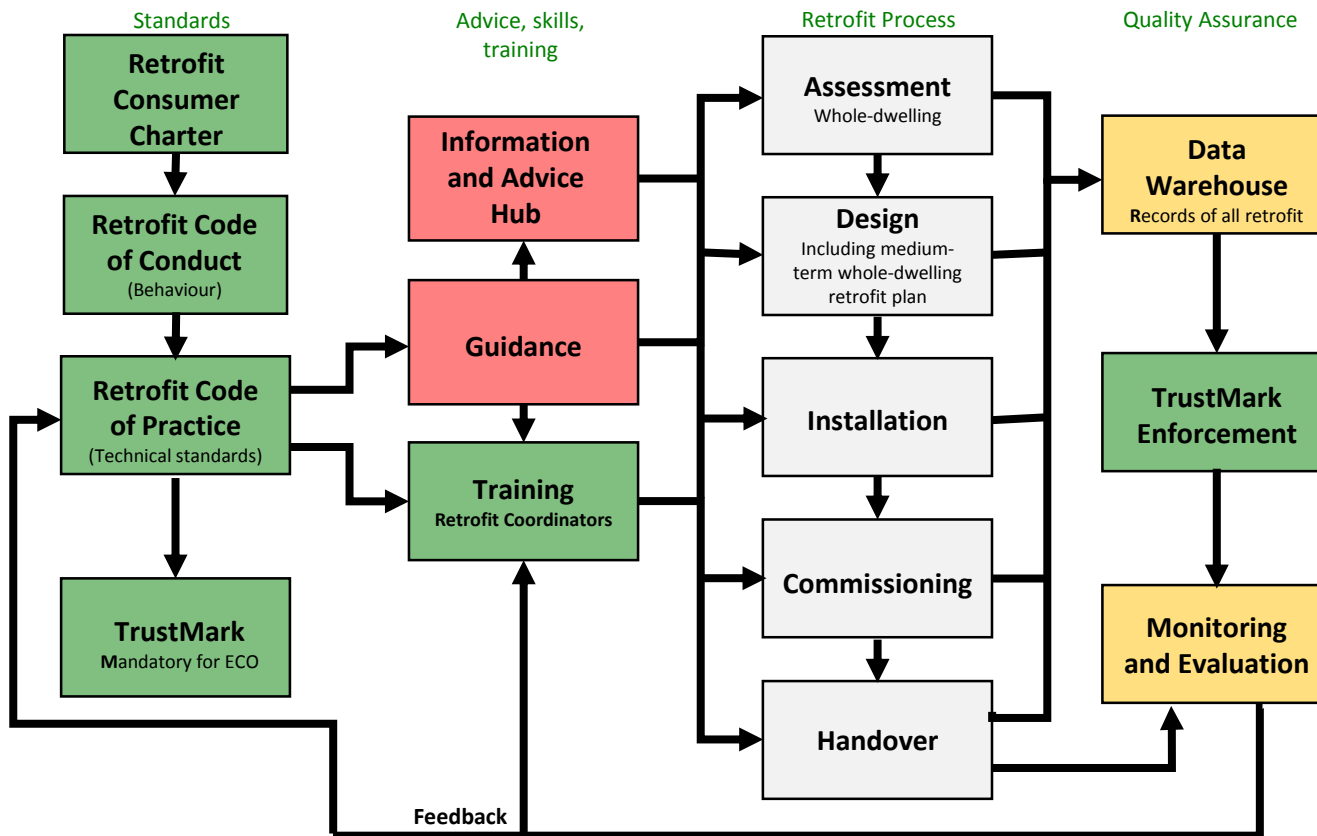
# Part F

- Simplifying and making the approach more robust
- Making it no worse to be closely examined due to high levels of moisture risk in retrofit
- Alignment with PAS 2035?
- Increased requirement for demonstrating compliance

## Each Home Counts: *Vision*



## Each Home Counts: *Progress (2019)*



# **NEW MUNICIPALISM**

Delivering for local people and local economies

# Contact details

**Colin McInnes, APSE Associate**

**Association for Public Service Excellence**

3rd floor, Trafford House, Chester Road,  
Old Trafford, Manchester M32 0RS.

**telephone:** 0161 772 1810

**web:** [www.apse.org.uk](http://www.apse.org.uk)



**GB 11409**



**GB 11132**



**GB 14074**