

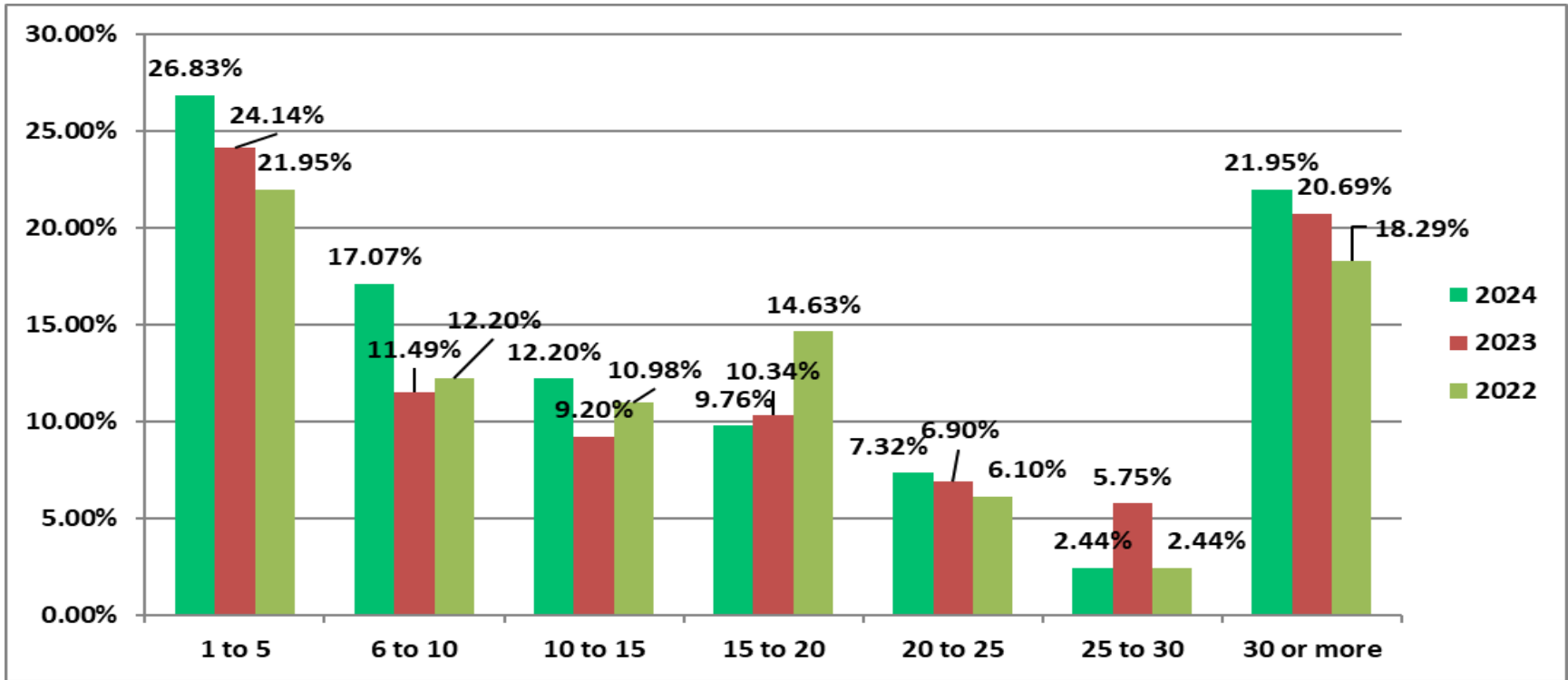


Local Authority Public Convenience Provision



Vickie Hacking, Principal Advisor, APSE

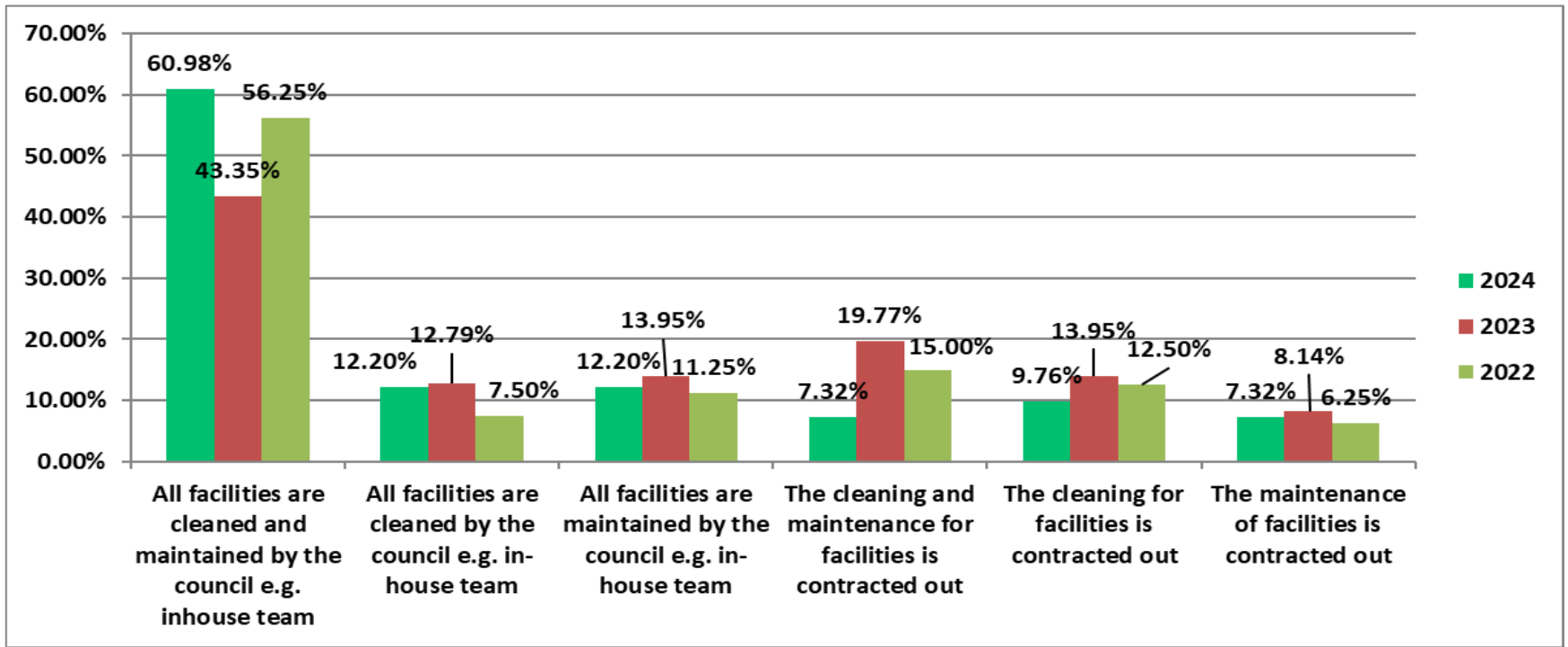
How many permanent facilities does your council provide and maintain



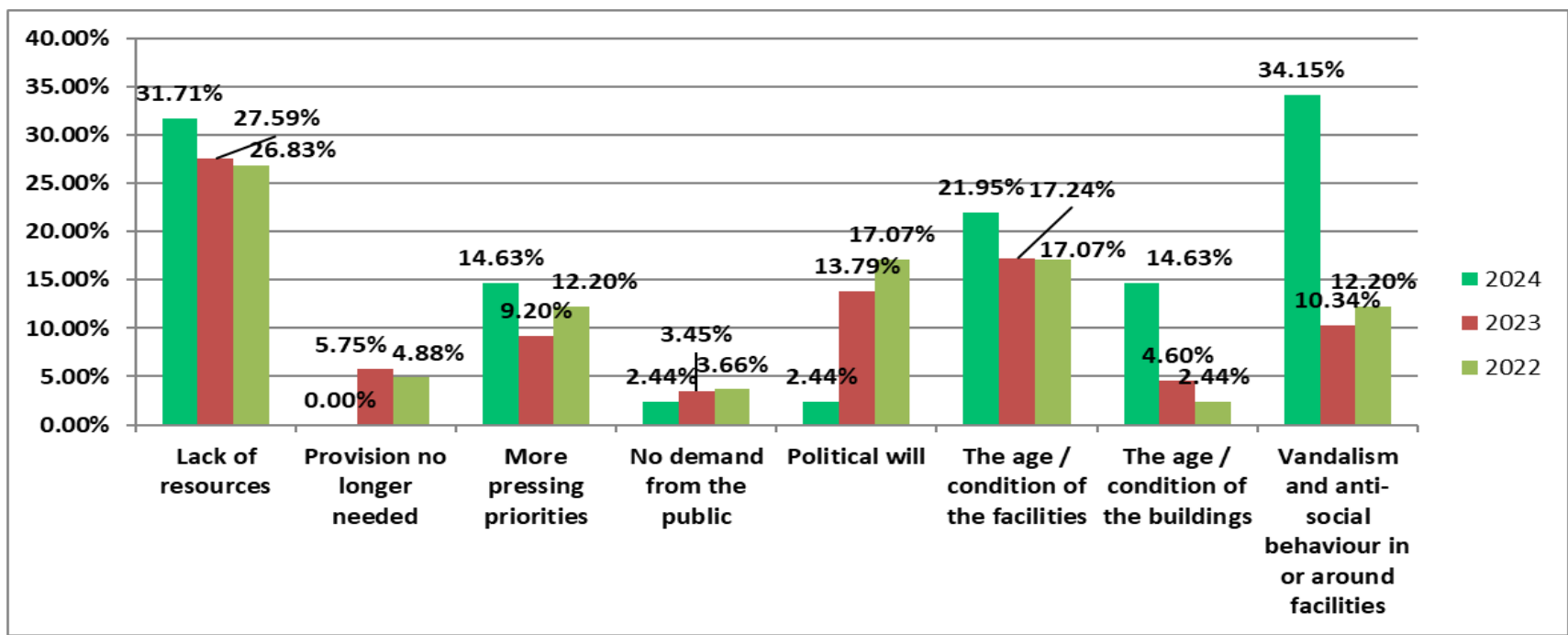
What type of permanent provision does your authority provide?

- Separate male and female provision – 90.24%
- Unisex / gender-neutral facilities - 31.71%
- Baby changing facilities
 - 31.71% separate facility
 - 41.46% female toilets
 - 14.63% male toilets.

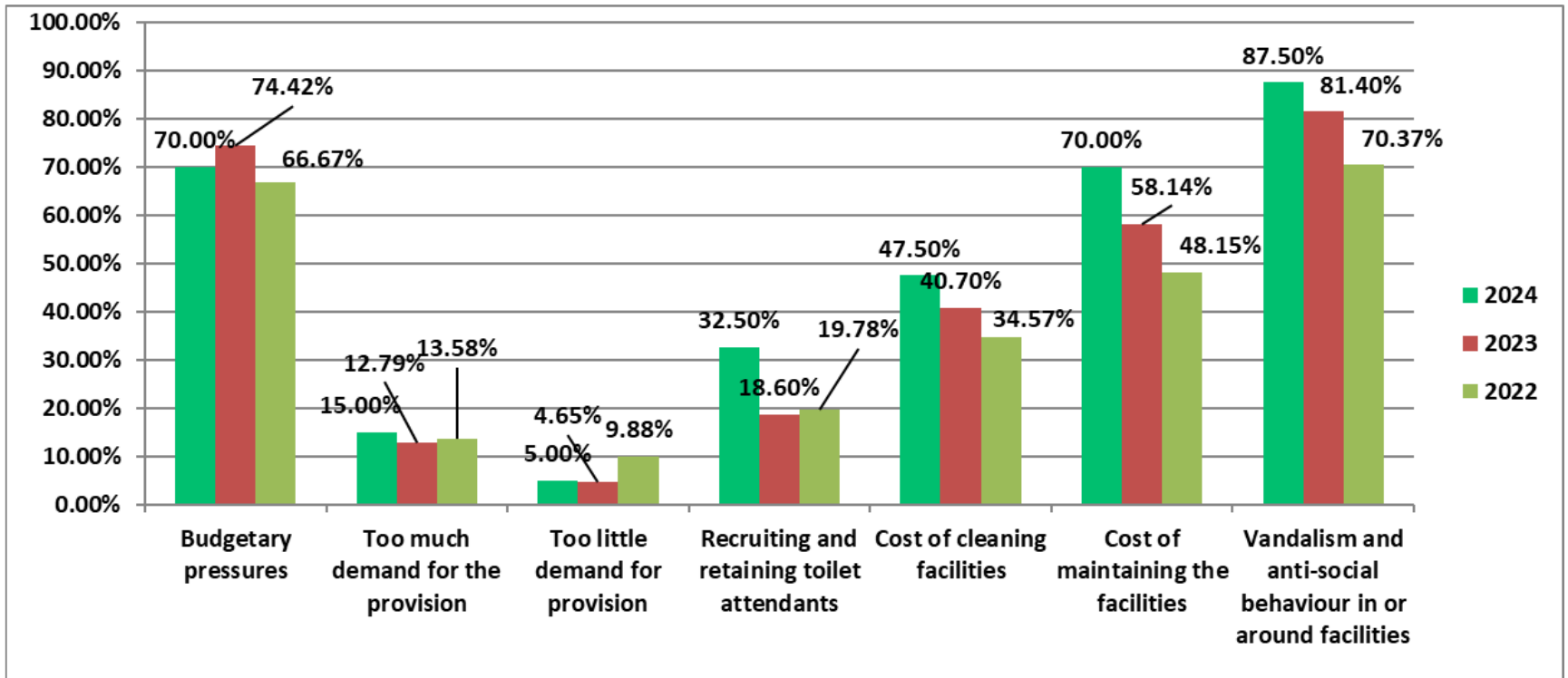
How is the provision maintained and cleaned?



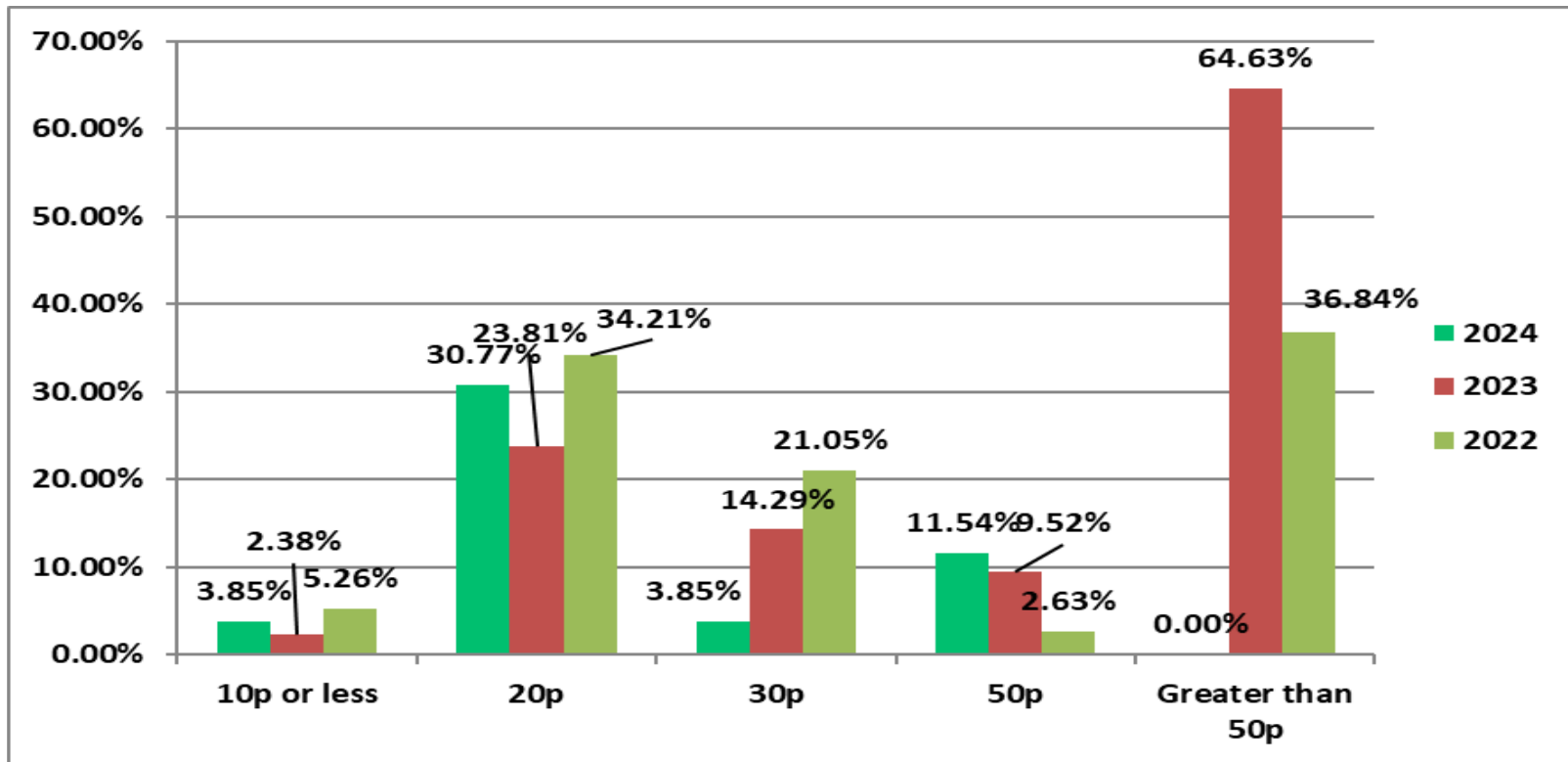
What are the main reasons for not providing permanent public toilet facilities?



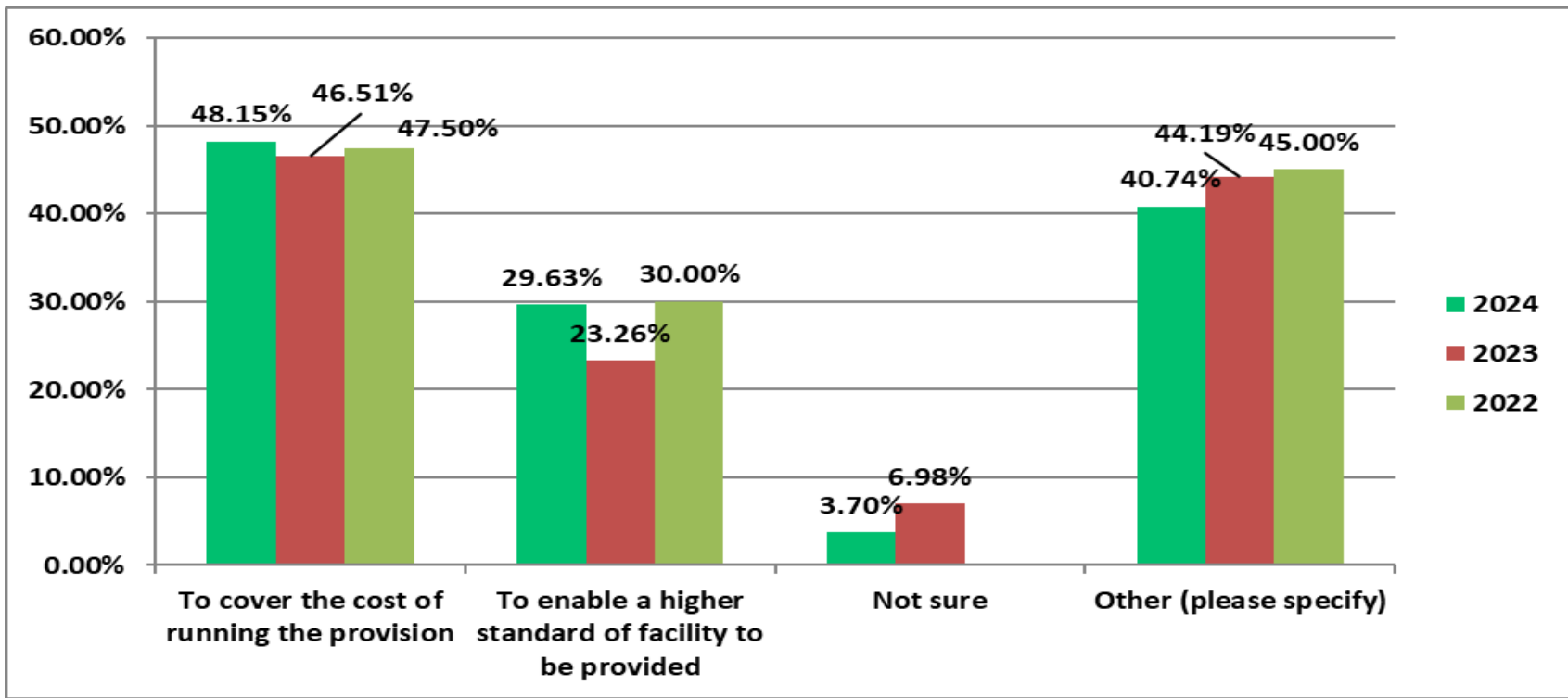
What are the greatest challenges in providing public toilet facilities?



How much do you charge?



What is the reason for charging for the provision?



Conclusions

- Due to the pressure on local authority budgets, there has been a decline in the provision provided by councils over the last ten years
- There is a strong case to be made for retaining public conveniences due to the economic benefit and gives people who rely on the facilities the confidence to visit parks, towns and tourist attractions
- The top three challenges for delivering the provision are: Vandalism and Anti-social Behaviour – 87.50%, Budget pressures – 70% and Cost of maintaining the facility – 70%
- APSE would recommend that councils develop a clear strategy for their public conveniences to ensure the provision remains sustainable for the future



Contact details

Vickie Hacking, Principal Advisor

Email: vhacking@apse.org.uk