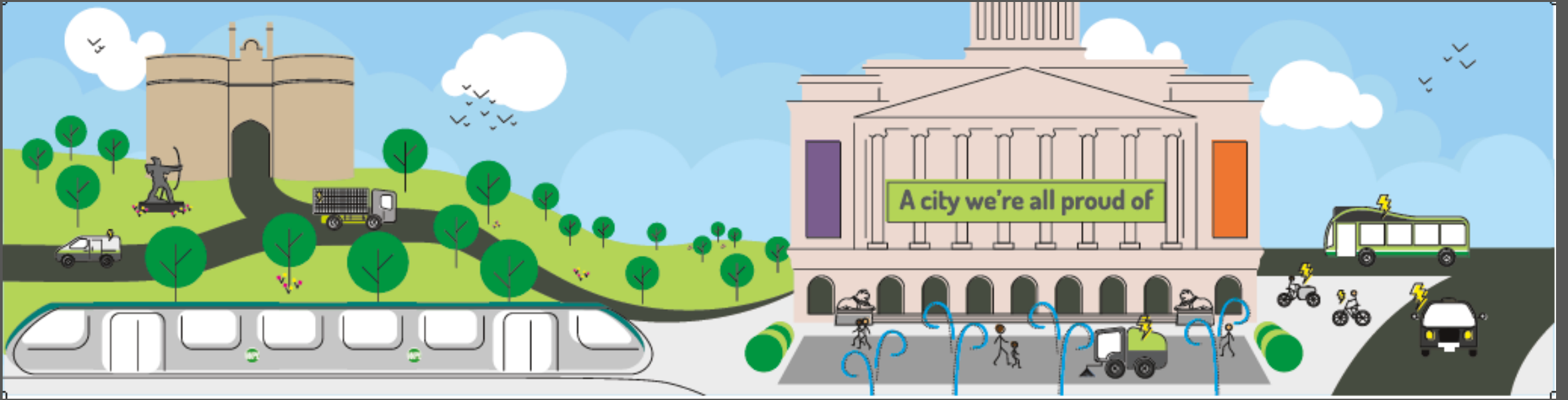


Connecting Nottingham

Creating a fair, clean, aspirational city

Matt Ralfe – Innovation & Change Manager



Why Nottingham

- Tight geography, surrounded by wealthier areas
- 300,000 residents, 3.5 million use services
- Majority of road travel is from those outside city
- Most residents do not have off-street parking
- 400 deaths p/a from air quality

WPL: a snapshot

Economy

**£1 million
in grants**

given to local businesses
for sustainable transport
improvements



Reduced congestion
growth by

47%



Environment

Bus

**Over
£120m**

invested into
our bus network



**Added 17km
of track**

to turn a tram line into a network
which connects the city

Tram



Train



Transformed Nottingham
Station into a
**21st century
multi-modal
interchange,**
creating a hub for
transport in the city

£55m

improving our city's cycling
and active travel facilities

Bikes



Transforming the city

- **£10 million p/a** for sustainable transport
- **£90 million** raised to date
- **£600 million** investment leveraged
- Over **£1 billion** invested in sustainable transport in last ten years
- **£11 million p/a** congestion saving
- **Zero** businesses left the city



Electric Fleet

- 243 EVs– 51% of fleet
 - 134 Vans
 - 54 Cars
 - 14 Cage Tippers
 - 9 Sweepers (+6 before Jan '23)
 - 6 Minibuses
 - 8 RCVs (+12 before April '23)





Delivered savings

- £624k fuel and £300k maintenance
- 1,162t CO₂, 9,700t over lifetime. Equivalent to planting 44,685 trees
- Delivering services more quickly (45 mins on bin lorries)
- Vibrations, headaches, stress, dirt on drivers and loaders
- Increased compliments from citizens and customers

Business Cases

Be prepared for:

- Grants
- Budget underspend/changes
- Vehicle availability
- Political requests

Be prepared with:

- Overarching documents and approvals
- Not 1 business case but 475
- Hit list and miss list
- Indirect benefits - driver, customer, political, service
- Work with the willing





Maintenance

- Mechanic training and tools
- Exclusively ULEV garage
- Encourage potential EV buyers & mechanics

ULEV Framework



The **benefits** of using our framework

- ✓ Expert, independent advice from a public sector body who are already well on their way to having an electric fleet
- ✓ Get a free consultation from us before you start on electrification – we have a multi-award winning fleet electrification strategy
- ✓ Initial help in getting the business cases completed including addressing political, financial and operational concerns by using our own, real-world data
- ✓ Reduced lead times and purchase prices
- ✓ Security that you are going to get a vehicle which is right for the job
- ✓ Increase local authority buying power
- ✓ Specifications which have been tested in a local authority environment
- ✓ Aftercare including advice on integrating the EV in to your operation
- ✓ Advice and even install of electric vehicle charge points
- ✓ Creates a network of EV authorities with shared lessons learned
- ✓ Allows a direct order to be placed or run a mini-competition to ensure the buyer gets the right vehicle for their locality's needs
- ✓ Maintenance advice from our experienced, IMI Level 4 qualified EV Mechanics

Our suppliers include



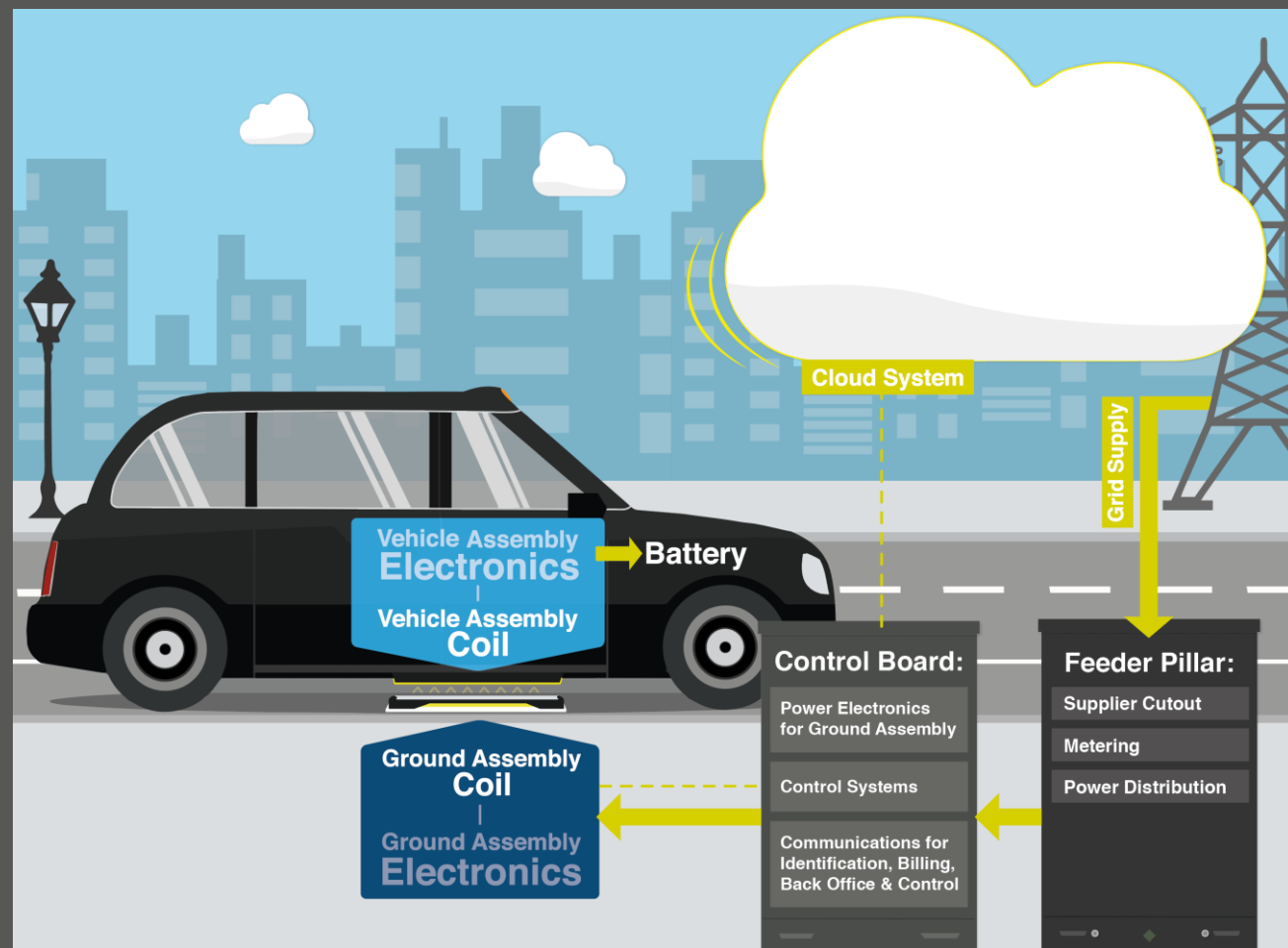
D2N2 Charging Network

- Improve local infrastructure and encourage uptake of ULEVs
- **500+ sockets** across DE and NG postcodes
- Chargepoints available to commercial, personal and public fleets
- **Reduced tariffs** for D2N2 residents



Wireless Charging

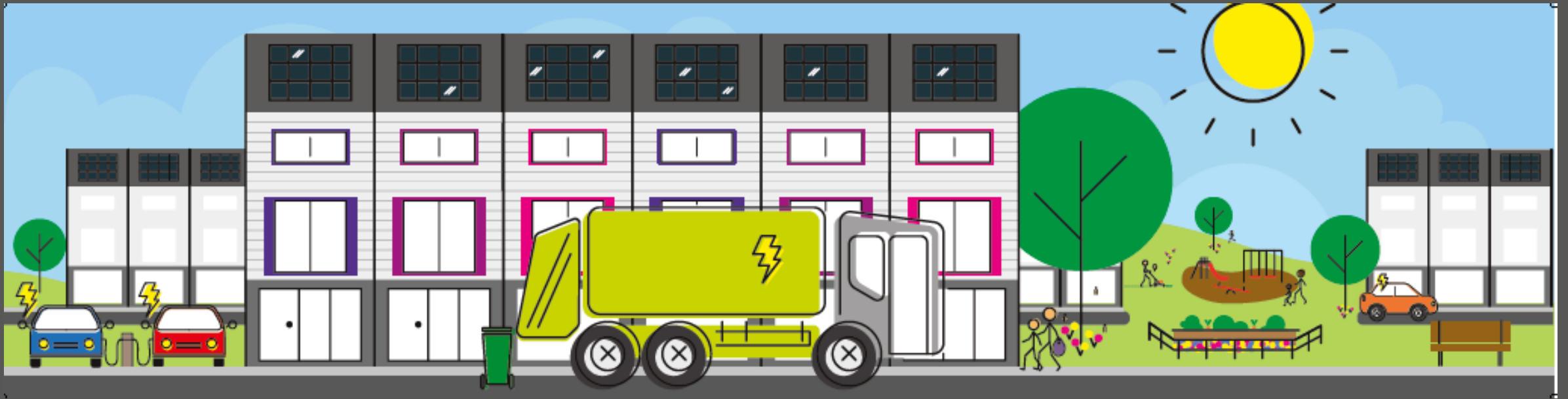
- Reduces physical on-street infrastructure
- **£761,000** in grant funding
- **5 wireless charging plates** and **9 taxis** to be trialled
- **6-month trial** available to taxi drivers in 2022



Green Fleet Expansion

- Battery storage
- Micro grid
- PV canopies
- ULEV Grey Fleet
- Electric Van Experience
- Electric handheld
- Emobility Centre
- WiCET
- V2G
- Shared Public Sector Network





Website: [NottinghamEVServices.co.uk](https://www.nottinghamEVServices.co.uk)

Email: matthew.ralfe@nottinghamcity.gov.uk

LinkedIn: Matt Ralfe

