

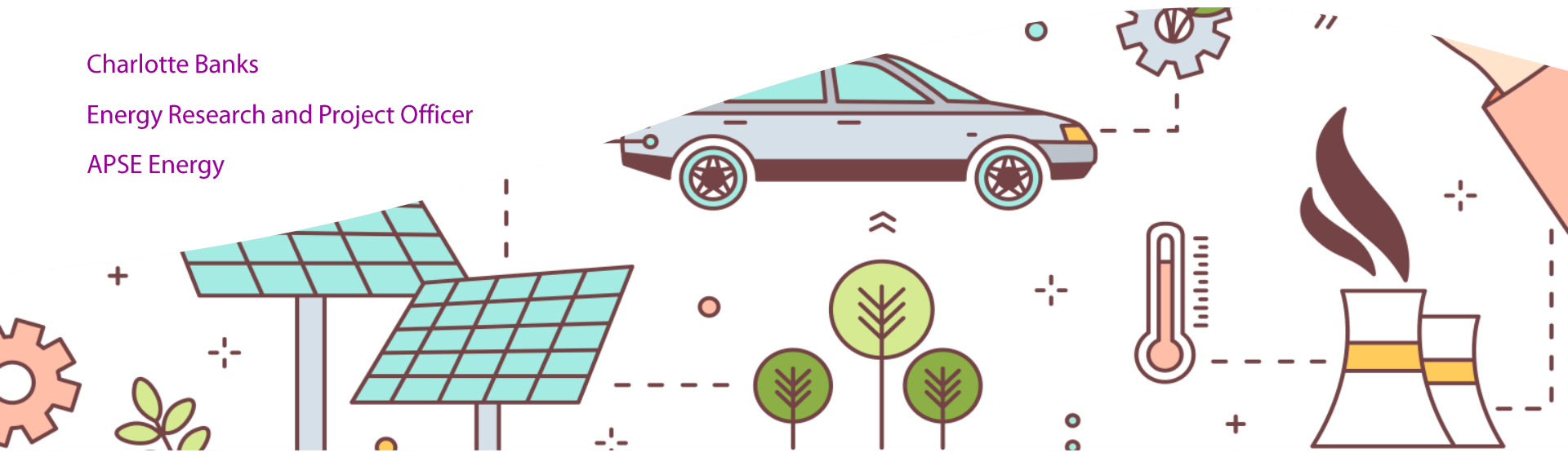
The Policy Landscape

The background to the Climate Emergency and its relevance and examples in building maintenance

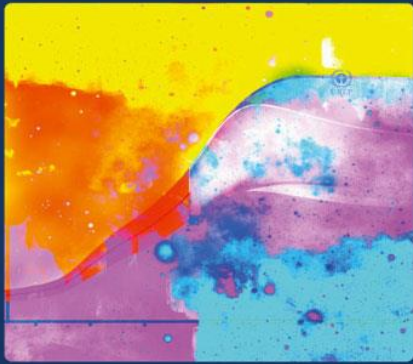
Charlotte Banks

Energy Research and Project Officer

APSE Energy



Background



ipcc
INTERGOVERNMENTAL PANEL ON climate change



Global Warming of 1.5 °C

An IPCC special report on the impacts of global warming of 1.5 °C above pre-Industrial levels and related global greenhouse gas emission pathways, in the context of strengthening the global response to the threat of climate change, sustainable development, and efforts to eradicate poverty.



Purpose



- A major motivator for declaring a Climate Emergency is to galvanise support for the climate change agenda and set a clear target by which the council and/or locality will be carbon neutral
- In emergency situations dealing with the problem becomes a top priority, people temporarily set aside business-as-usual and focus intently on determining the safest course of action and doing whatever is required to deal effectively with a threat
- It will empower communities, encourage other councils to follow suit and generally help all of us treat the climate crisis as the emergency that it is
- **GREENPEACE** poll - Two-thirds of people in the UK recognise there is a Climate Emergency

Examples



Examples

Boilers on Prescription

- Doncaster Council's Central Heating Fund
- The primary objective was to reduce fuel poverty in South Yorkshire by helping eligible residents access financial support to improve the energy efficiency of their home heating systems
- YES Energy Solutions (YES) was selected to manage the scheme
- The main activity was focussed on identifying off gas properties where residents were paying disproportionate amounts on domestic fuel
- The scheme went beyond its intended outcomes providing major benefits for local people and the Council
- The installations have enabled residents to collectively save an estimated £990,317 on fuel bills



Examples

Berneslai Homes

- Barnsley Council – ALMO 2002
- 18,500 properties
- Solar PV
- Across Barnsley, 321 council owned homes have received free solar PV assets – more than 75% of these installations have been on bungalows with elderly tenants
- Issue of grid constraints so phase 2 - Battery storage
- One estate has 80% of the properties fitted with solar
- Moxia
- System controlled by Moxia – easy for tenants
- Reduction in energy bills



Examples

Enfield – Heat Pumps

- In collaboration with Kensa & Engie
- 2 ground source heat pump projects in 2 years
- Initial 4 tower blocks and 187 properties
- Second project scaled up to 8 tower blocks and 400 properties
- 8,000 tonnes of lifetime carbon saved per block
- Total 96,000 tonnes lifetime carbon saved
- 50% heating cost saving for residents, helping alleviate fuel poverty in some of London's most deprived wards
- Increased thermal comfort: external wall insulation and ventilation installed at the same time
- Appetite for further installation projects



APSE Energy

4 Main Areas

- Advocacy
- Knowledge
- Learning
- Consultancy

Support

- Has your council declared a climate emergency?
- Do you have a plan to address it?
- Do you have the staff, capacity and expertise to put your plan into action?

APSE Energy was established to help inform and support local authorities in exactly this kind of situation



APSE Energy Publications



apse energy
Local Authority Climate Emergency Declarations

Strategic and practical considerations for climate emergency declarations, targets and action plans



apse energy

How APSE Energy can help local authorities meet the climate emergency challenge



apse energy

YES energy solutions

How ECO3 funding can benefit local authorities

A simple guide to the Government's ECO scheme for energy saving home improvements





Contact Details

**Charlotte Banks, Energy Research and Project
Officer, APSE Energy**

Email: cbanks@apse.org.uk

[@apseevents](#) [@apsenews](#)

Association for Public Service Excellence

3rd Floor, Trafford House
Chester Road, Manchester M32 0RS

telephone: 0161 772 1810

fax: 0161 772 1811

web: www.apse.org.uk



INVESTOR IN PEOPLE



GB 11409



GB 11132



GB 14074