

## APSE Memorial Inspection Safety Tool (MIST)

Debbie Johns, Head of performance networks

# Description;



- A Memorial Inspection Safety Tool (MIST App)
- A simple App installed on a tablet or phone in the field.
- Proposed at previous advisory groups, Cem/Crems Annual Seminar and PN Seminar and received a great deal of interest.
- Deferred initially due to Covid-19
- Would require selection from simple pre-determined questions to assess the safety of the memorial.
- The questions will all require agreement/development from the working group.



# Benefits of the app;

## The app would;

- Allow comments on observations.
- Take photo of each memorial's condition.
- Enable data to be sent and stored.
- Hosted externally (cloud based).
- Provide results in simple database view.
- Export data into excel for reporting.

# Benefits of the app;



The app could provide the following survey options;

- Option 1 - Complete an overall inspection of the burial ground (including gates pathways, signage, bins, access etc.)
- Option 2 - To complete a detailed individual inspection of each memorial scheduled.
- Option 3 – Simplified memorial survey (pre-loaded information provided by the L/A and built into the App e.g. Site, Section, Asset Number, Latitude/Longitude etc ).



# Benefits of the app;

## The Authority would:

- Save time and money on inspections.
- Fulfil its duty to inspect every 5 years.
- Could plot memorials using GPS data.
- Have more reliable/ accessible data.
- Be able to report performance better.

# Benefits of the app;



## Nationally:

- There would be a recognised national system.
- Uniformity of inspection.
- Monitor performance, evidenced based approach.
- Allow national benchmarking.
- Feed into award criteria.



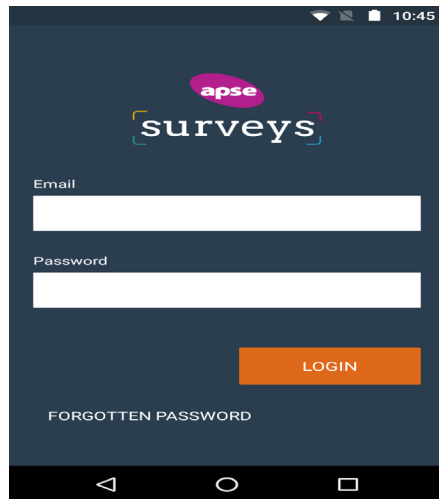
# Linking into the benchmarking

- This could provide data to the APSE suite of performance indicators for Cemetery and Cremation services.
- So the following points should be considered when reports are designed;
  - Number of memorials
  - Number of memorials requiring inspection
  - Number of memorials requiring inspection during financial year 2020 / 21
  - Number of memorials inspected during financial year 2020 / 21
  - Number of above memorials inspected requiring remedial work
  - Number of above memorials requiring remedial work which were made safe

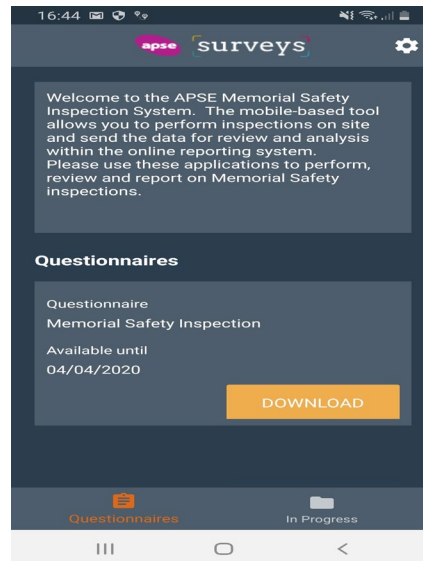
Previous discussion with working group generated the following;



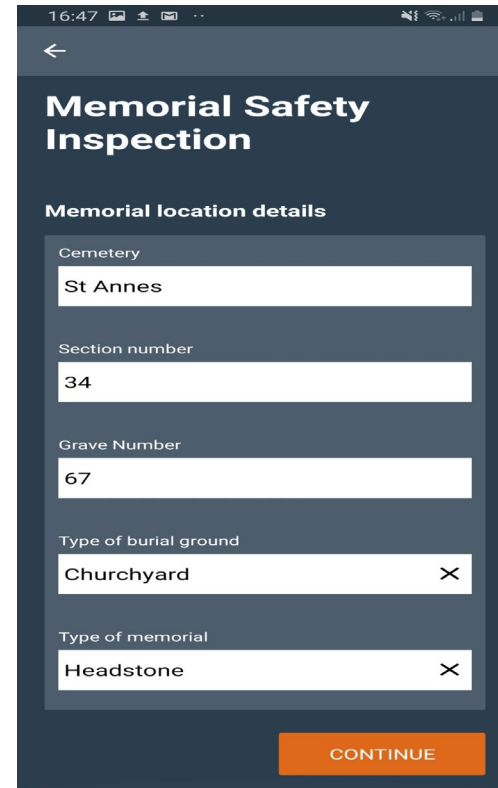
USING THE APSE MEMORIAL SAFETY INSPECTION IN THE APP



On opening the app, login with the email and password for the Memorial Safety Inspections system.



First page shows the available surveys. Select the Memorial Safety Inspection

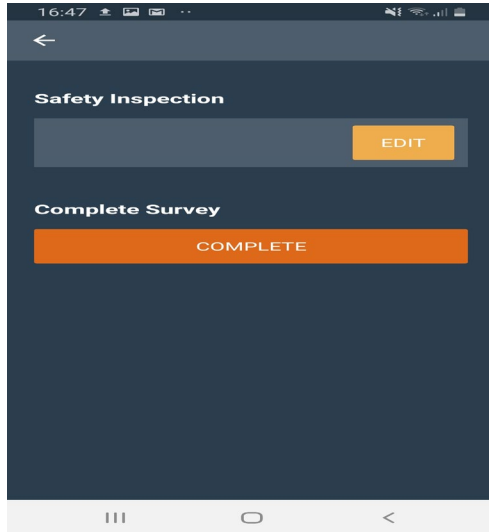


Location coordinates, time & date all captured automatically.

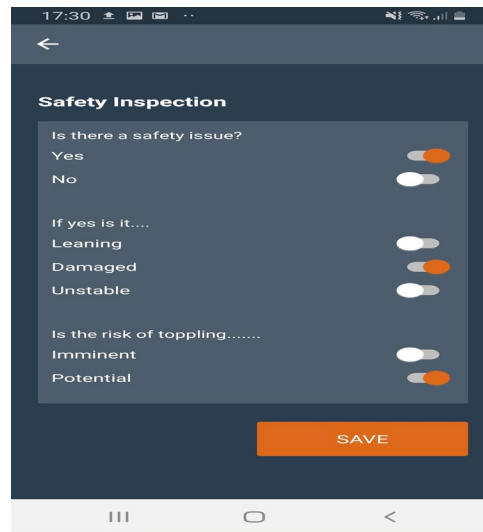
Address populated but can be amended if required.

Select continue to move on.

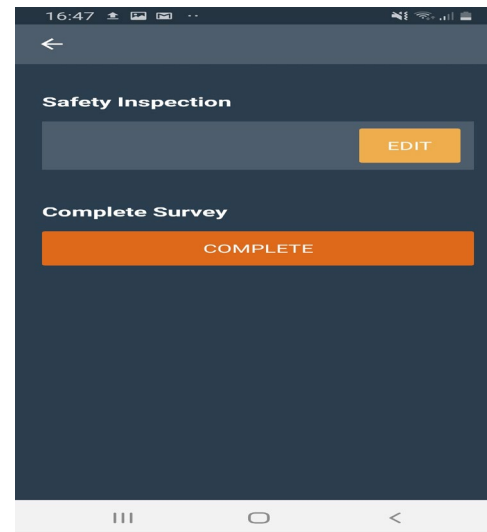




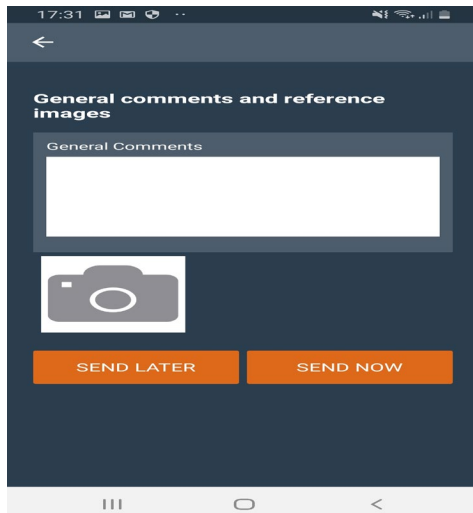
Tap edit to complete the inspection.



Complete the safety inspection (visual and hand) and save



Tap complete to add images and general comments



Add any images and general comments, save to send later or send now to submit.

# Points of consultation



- Include time, date, location (GPS), cemetery, section number, grave number plus photographs of each memorial's condition.
- Differing burial ground types would need to be selected in the template E.G. churchyard, closed churchyard, cemetery etc.
  - Include 'listed' and 'scheduled' sites
- Include 'section number' and 'grave number'. Where 'section' information isn't available, identify the cemetery.
- Include different types of a 'Memorial' E.G. Monuments, Headstones and Kerbed Memorials etc.
- Identify the type of headstone e.g. sandstone, granite, pinnacle etc.



- Include benches
- It would require selection from simple pre-determined questions to assess the safety of the memorial.
  - If a defect is recorded then categorise the priority of the defect
  - List potential actions to make the memorial safe if it fails the inspection.
  - Capture ‘is there a safety issue’?
  - Response times are for the LA to determine.



- Include a comments box for other issues not listed in the pre-determined questions.
- Include a data field for any 'areas of concern'
- Flag re-inspection for 3, 6 or 12 months
- Plot completed memorial inspections using co-ordinate data.

# Other desirables



- Place the most common answer at the top of any list of options on drop down menus
- Include data from previous inspections
- Feed into back office systems (API).



**apse** performance networks

## MIST – APSE's memorial inspection safety tool



## What's the cost?

£600 per year per authority.

22 councils signed up to date.

Must be members of PN for Cems & Crems.

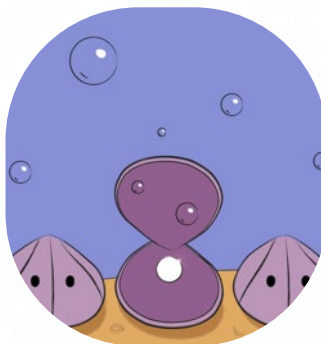


## Next steps:

To ensure the App will meet your service needs your support is required to assist with the following:

- Finalise the questions to be included in the inspection form.
- Field test the App once built – Summer 2022.

# Other Apps







## Contact details

**Debbie Johns, Head of Performance Networks**

**Email: [djohns@apse.org.uk](mailto:djohns@apse.org.uk)**

**Mobile: 07834 334193**

**Association for Public Service Excellence**

2nd floor Washbrook House, Lancastrian Office Centre, Talbot Road,  
Old Trafford, Manchester M32 0FP.

**telephone:** 0161 772 1810

**fax:** 0161 772 1811

**web:** [www.apse.org.uk](http://www.apse.org.uk)



INVESTOR IN PEOPLE



ISO 14001  
REGISTERED FIRM

GB 11409



ISO 9001  
REGISTERED FIRM

GB 11132



ISO 27001  
REGISTERED FIRM

GB 14074