



# How Local Authorities Can Move Towards **Net Zero** in Waste Collection

Andrew Crofts


UK Managing Director, WasteHero

15 Dec 2022

[wastehero.io](https://wastehero.io)



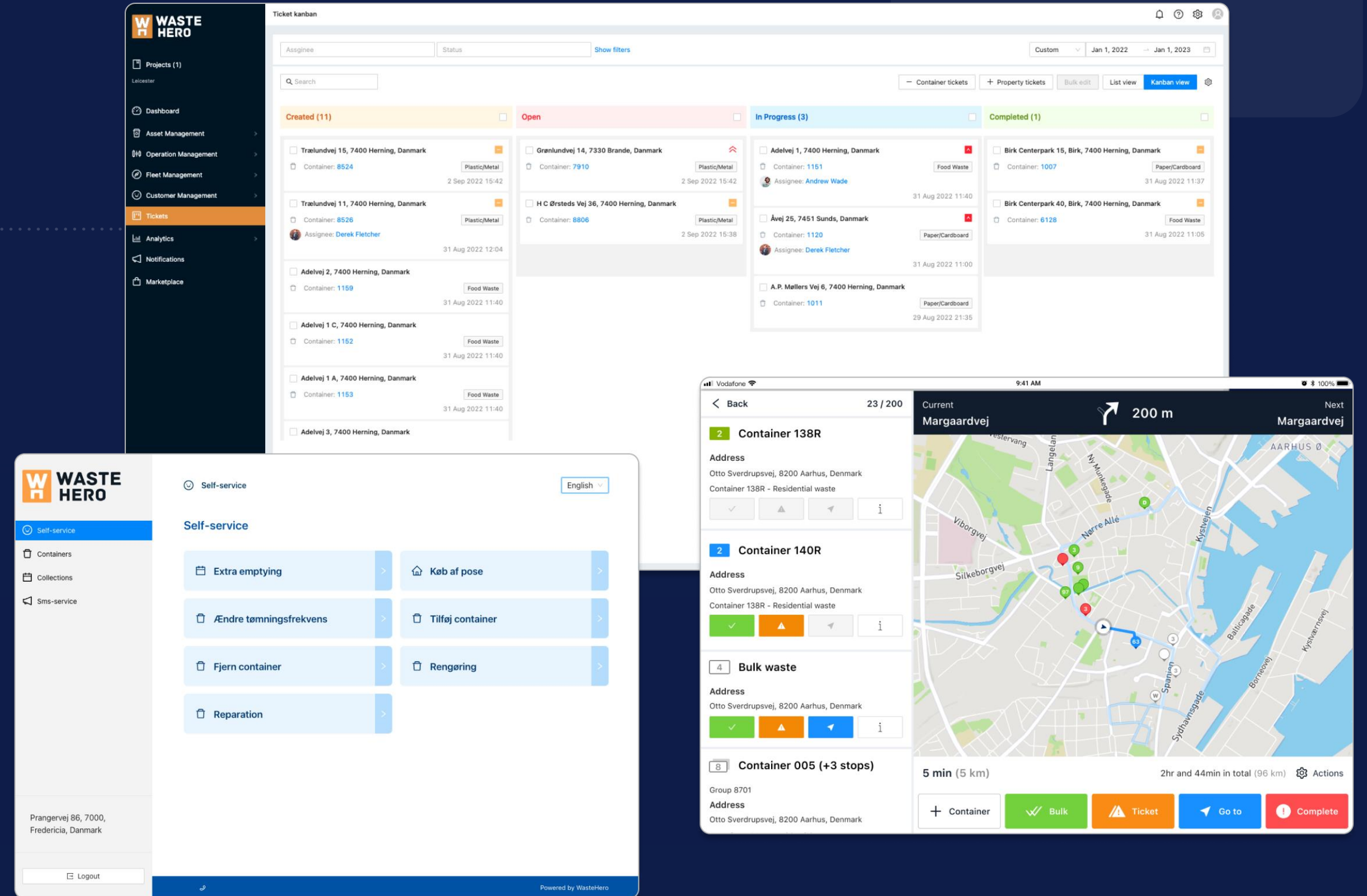
# Today's Agenda

1. Introduction to WasteHero
  2. Four Ways To More Sustainable Waste Collection
    - a) Optimise Your Route Designs
    - b) Equip Crews With In-Cab Technology
    - c) Collect Public Bins On An As-Needs Basis
    - d) Educate Citizens to Recycle Correctly
  3. Why flexible IT systems are crucial on the path to Net Zero
  4. Q&A
- 



# Municipal Waste Management, Reimagined

A reimagined & up-to-date 360° SaaS Suite helping cities manage waste collection sustainably, reduce operative time & engage citizens effortlessly.



# Systems built 15 years ago don't consider the workflows and challenges cities face today.

- ❌ Multiple complicated systems that can't integrate
- ❌ Pressure to cut costs and still deliver a great service
- ❌ Staff that feel like systems are working against them
- ❌ Difficult to incorporate sustainability measures
- ❌ Low transparency between stakeholders





# An up-to-date operating system gets your team to where they deserve to be.

- ✔ A motivated, happy and productive team
- ✔ Single source of truth enabling workflow automation
- ✔ Citizens are super satisfied with waste services
- ✔ Cost savings and sustainable operations
- ✔ Thrilled drivers that have a smooth work day



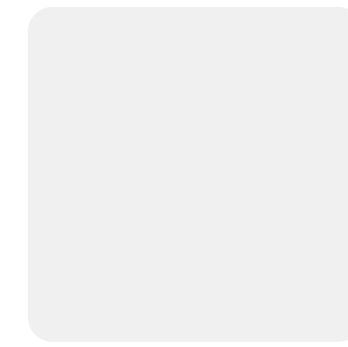
A decorative graphic consisting of a small square at the top center, a larger square at the top right, and a dotted line forming an L-shape connecting the bottom of the top-center square to the left side of the top-right square.

4 ways to move towards  
**sustainable waste collection**  
with one IT solution

# Optimise Your Route Designs

Find the most efficient design for your waste services based on an advanced routing algorithm.

- Reduce fuel consumption and Co2 emissions with efficient routes
- Minimise air pollution by vehicles with less time spent in traffic
- Increase load factor to reduce the number of vehicles needed



The screenshot displays the TAMA web application interface. On the left is a dark sidebar with the TAMA logo and a navigation menu including: Projects (3), Dashboard, Asset Management, Operation Management (highlighted), Fleet Management, Customer Management, Tickets, Analytics, Notifications, and Marketplace. The main content area is titled 'Edit Scheme: 306' and includes a 'Configuration' section with 'Edit' and 'Delete' buttons. Below this, a 'Hauler' section shows 'Remondis - Genanvendelig'. A 'Vehicles' list includes items like SD-600 (Bo Larsen), SD-603 (Morten Skovsen), FF-103 (Frederik Dunst), LV-402 (Max Nielsen), MBE-502 (Samuel Sørensen), MBE-506 (Peter Pedersen), MBE-507 (Per Christensgaard), and MBE-508 (Kristoffer Markelsen). A 'Total' summary shows 360 working hours and 4113 stops. A 'Routes' section has a search bar and a calendar grid for December 8-14, 2023, with each day showing a 9-hour duration. The bottom of the interface shows expandable sections for 'Navigation APP', 'Generation of routes', 'Auto complete', and 'Other'.



# Equip Crews With In-Cab Technology

In-Cab Technology enables drivers to follow optimised routes, track collections and document missed collections.

- Stop wasting fuel on go-backs
- Eliminate paper usage for round sheets
- Track weight data to understand citizen behaviour & inform targeted communications

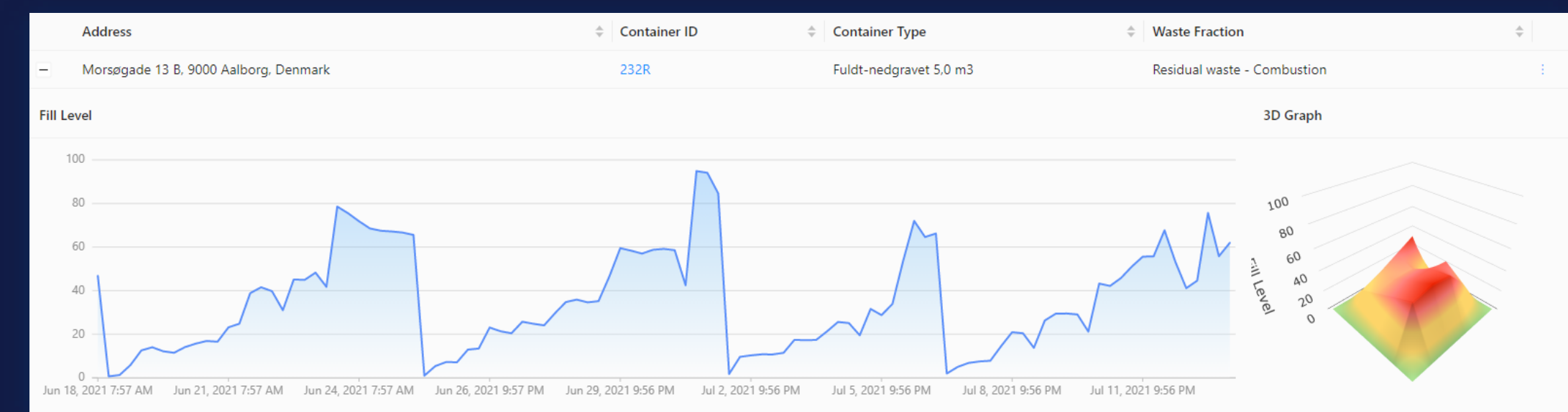
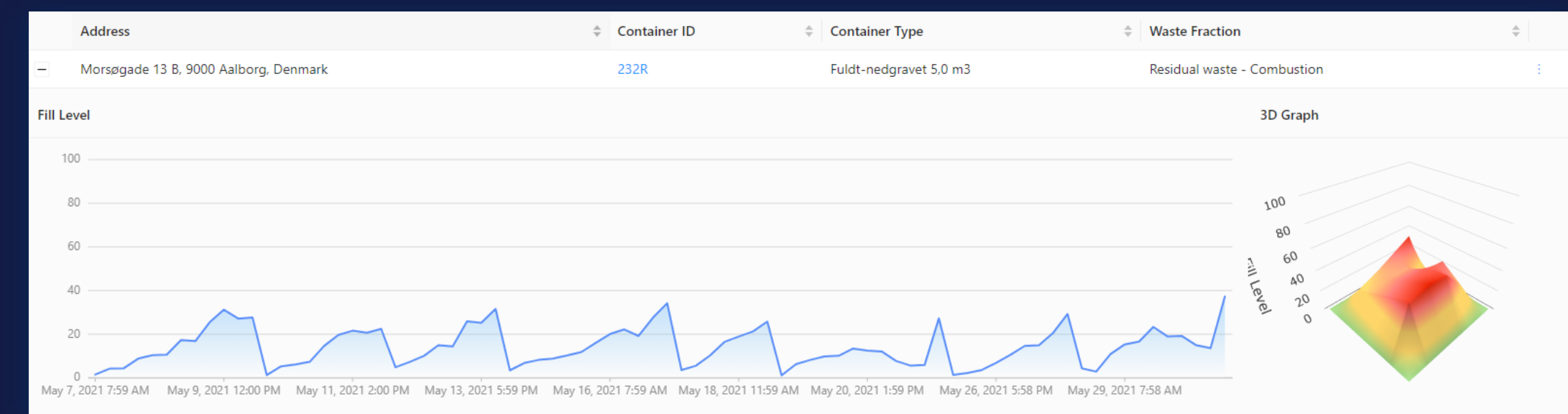




# Collect Public Bins On An As-Needs Basis

Attach smart bin sensors into public bins to dynamically add full bins into existing route schedules.

- Reduce collection frequency by up to 40% by collecting bins when full
- Save fuel and reduce emissions
- Eliminate overflowing bins
- Reduce usage of bin liners
- Measure waste generation patterns

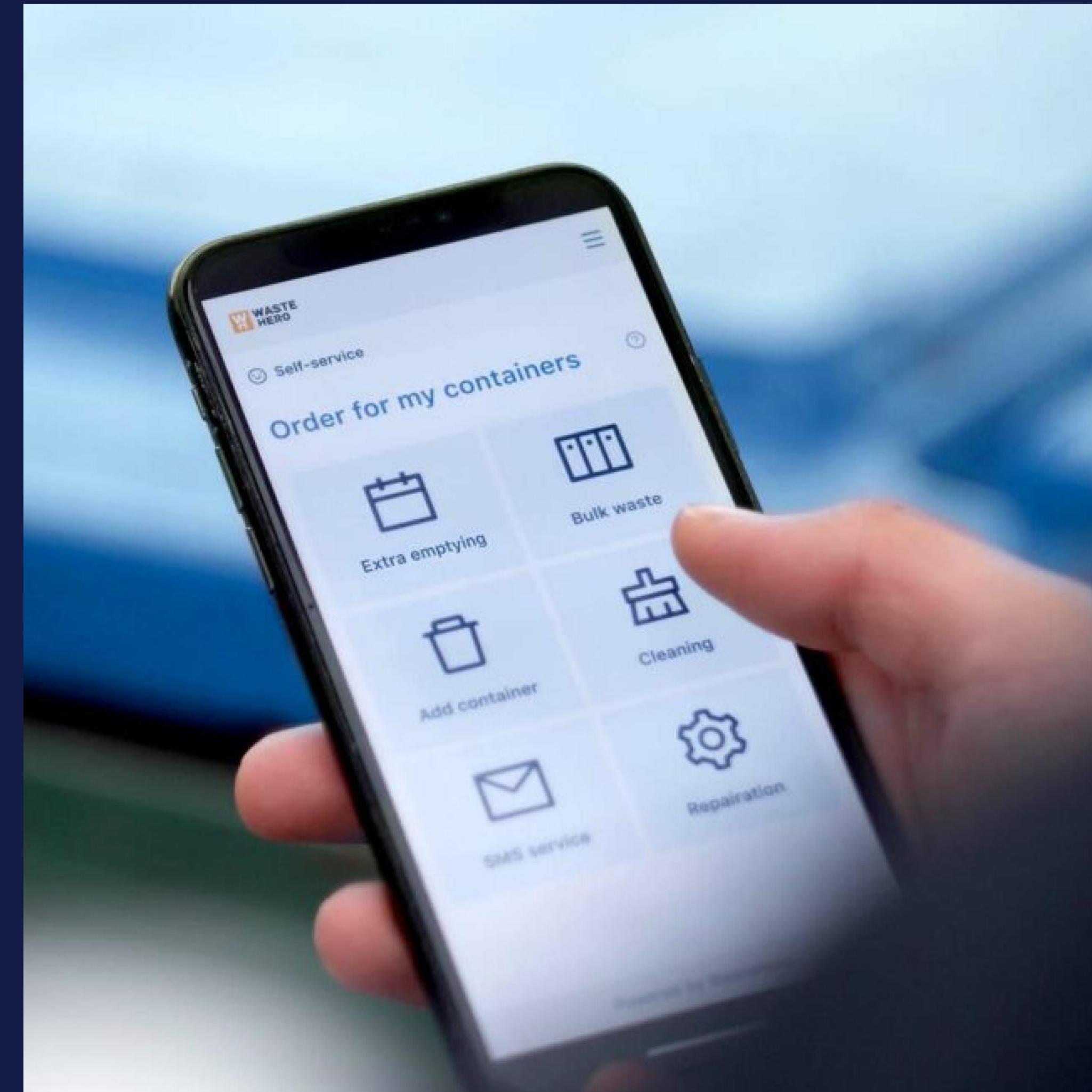




# Educate Citizens to Recycle Correctly

Understand waste behaviour with in-depth analytics and create timely communications using the dedicated citizen waste app.

- Track hotspots of waste generation to understand where efforts should be focused to boost recycling rates
- Automate messages to educate residents on incorrectly sorted waste *as it happens*
- Collection reminders





# Why **IT systems** are important on the path to Net Zero



# Why flexible IT systems are crucial on the path to Net Zero

## Flexible systems:

- Customisable and agile
- Integrates easily
- Single source of truth
- Advanced analytics

## Why this is crucial:

### 1. MOVE FAST & ADAPT

Quickly test out new designs for waste collection systems

Adapt to evolving industry requirements

Match the different needs across local authorities

### 2. BE DATA-DRIVEN

Data is the foundation for more sustainable waste management

Make informed, data-driven decisions

Understand resident behaviour on postcode, street, address level

### 2. EASY COLLABORATION

Connects back-office, crews, contractors, residents, & facilities

Enables automation of processes for efficiency

Enables targeted communications to residents





# Q&A

## How Local Authorities Can Move Towards **Net Zero** in Waste Collection

Andrew Crofts  
UK Managing Director, WasteHero  
[acrofts@wastehero.io](mailto:acrofts@wastehero.io)

