

Plymouth & South Devon Community Forest



Chris Avent
Green Estate Manager
Plymouth City Council



P&SDCF – Why?

Strategic Links

- Joint Local Plan
- Plan for Trees
- Climate Emergency Action Plan

Need

- 1 in 5 children live in poverty,
- Health inequalities - significant difference in life expectancy
- 17% of neighbourhoods in Plymouth are among the most deprived 10% in England
- Inequality of access



Vision & Mission

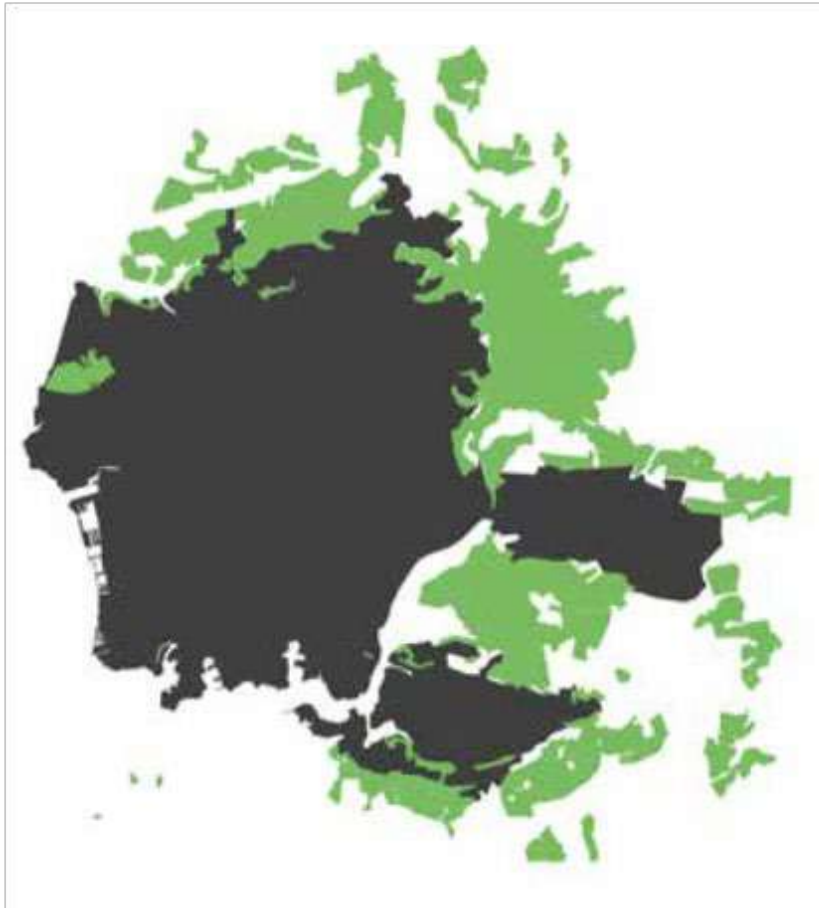
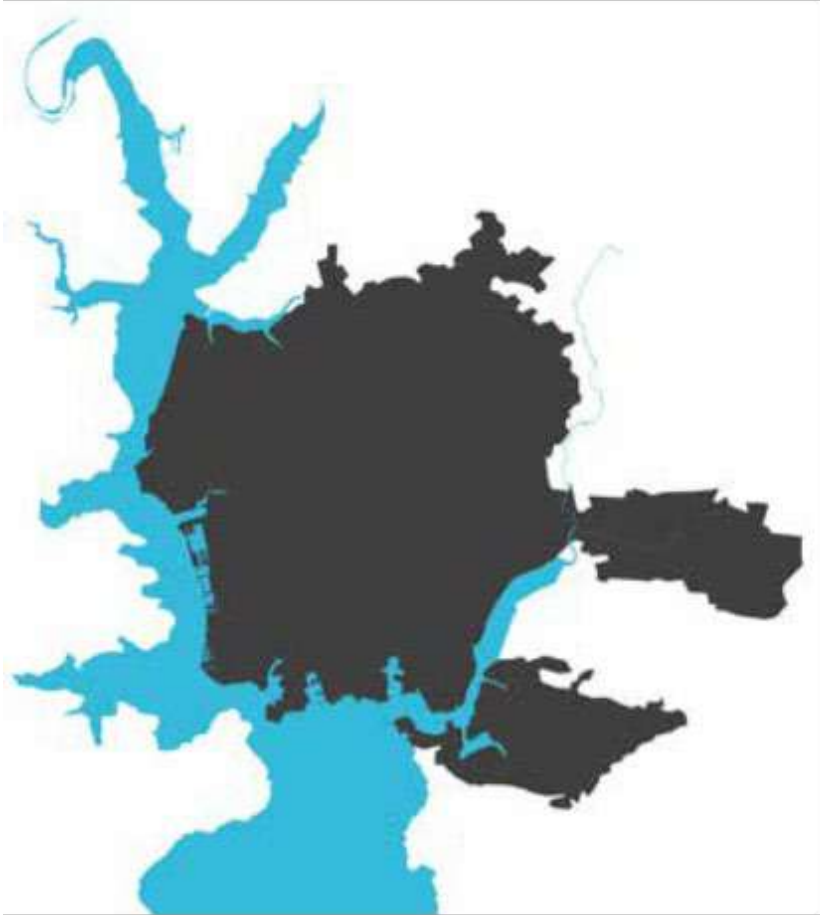
A new 21st century woodland network created by young people to inspire and support future generations of Plymouth and SW Devon.

PCF will create space for nature, encourage enterprise, deliver a positive transition to net zero and enable young people to influence their futures.



What is the forest?

Plymouth National Marine Park and Plymouth Community Forest



What is the forest?

GREEN STREETS LIPSON

This region of Plymouth is one of the most deprived of street trees.

Here a mix of Street Trees, Green Streets and Park Streets are used along Salisbury Road to create a green environment that encourages biodiversity, social interaction and active travel.

Key

- Green Streets
- Park
- Local Centre
- School
- Church
- Hospital

Green Street Section

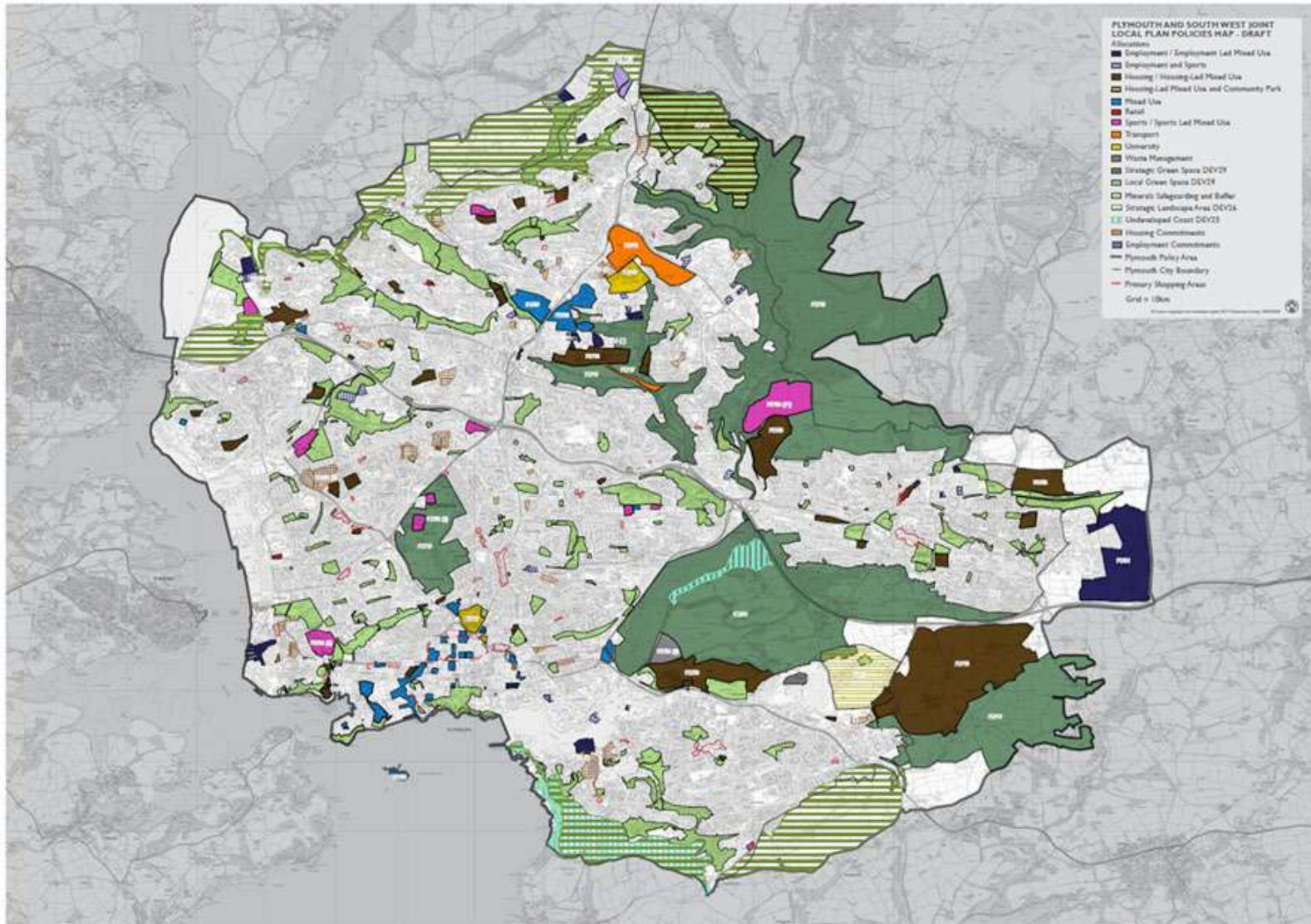
Street Tree Section

Park Street Section

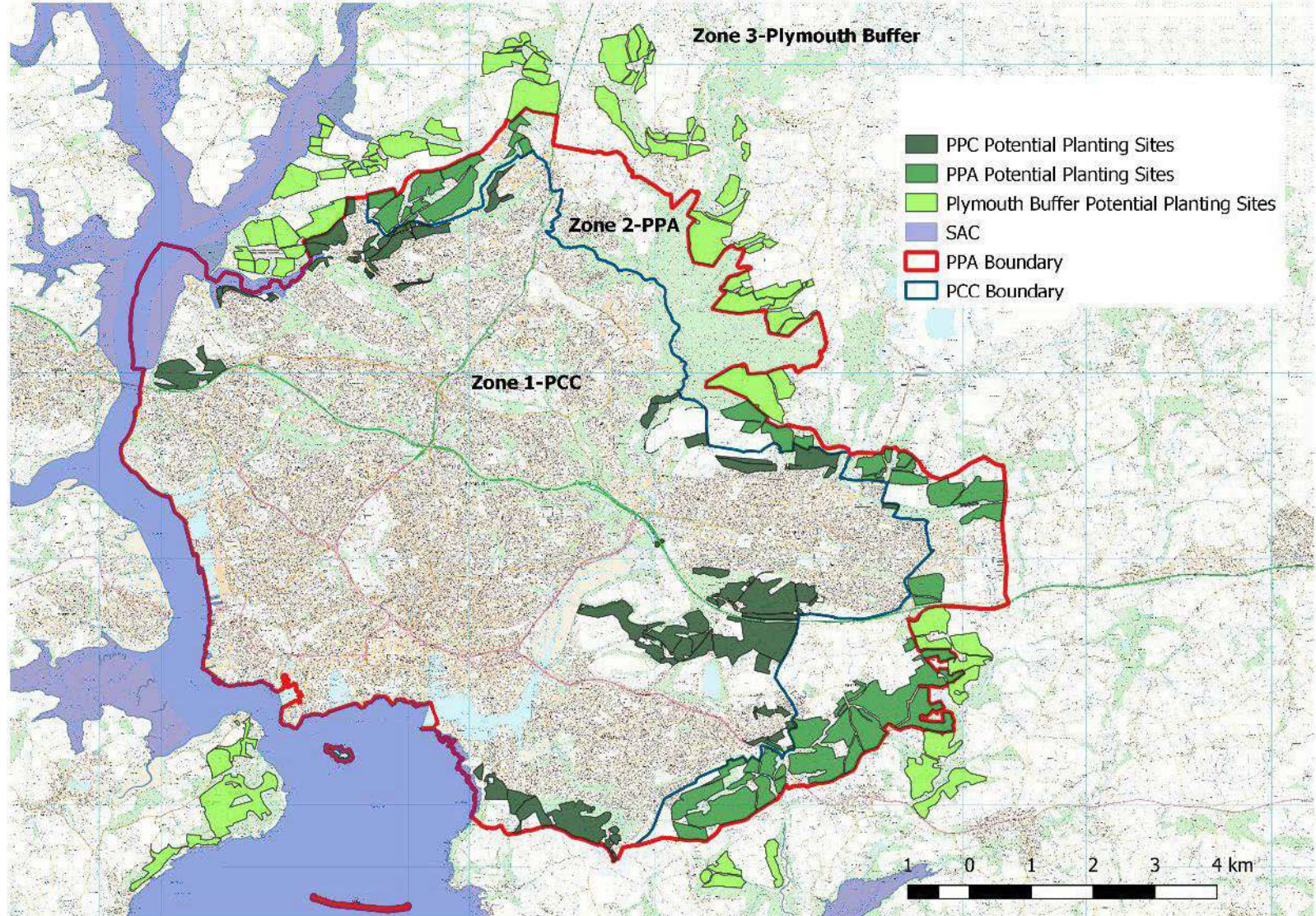
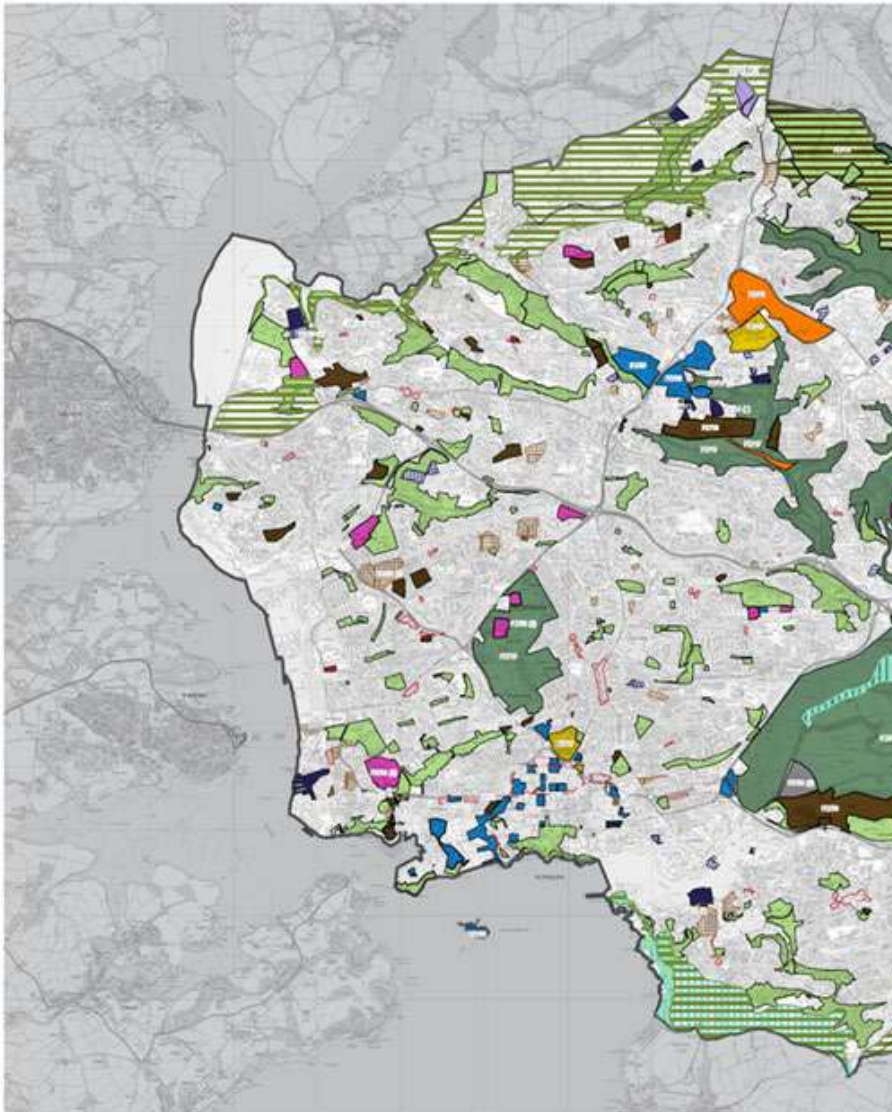
Precedent - Walthamstow Living Streets



Developing the Forest



Developing the Forest



Delivery - Planting the seeds

Establishing representative governance

PCF as own entity representing beneficiaries

Setting clear policy

That connects with diverse audiences

Establishing funding & investment strategy

Using new conservation finance models

Establishing delivery plan

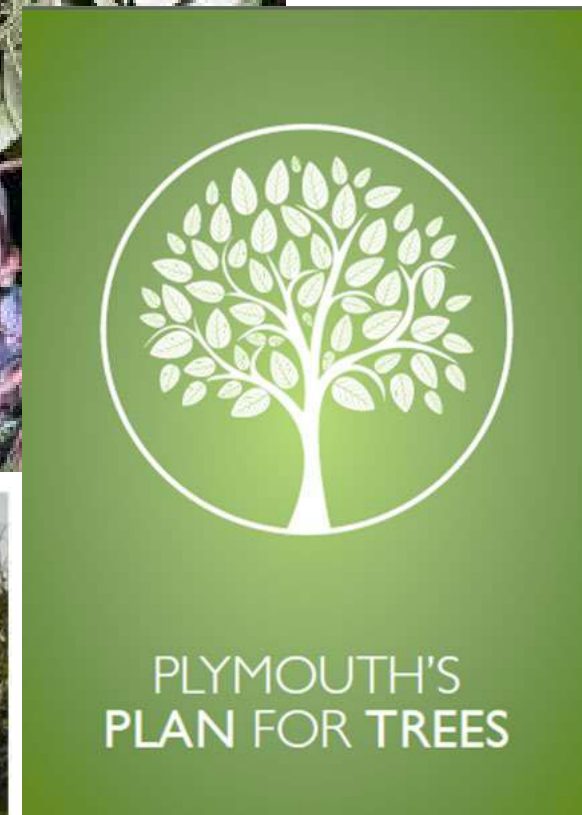
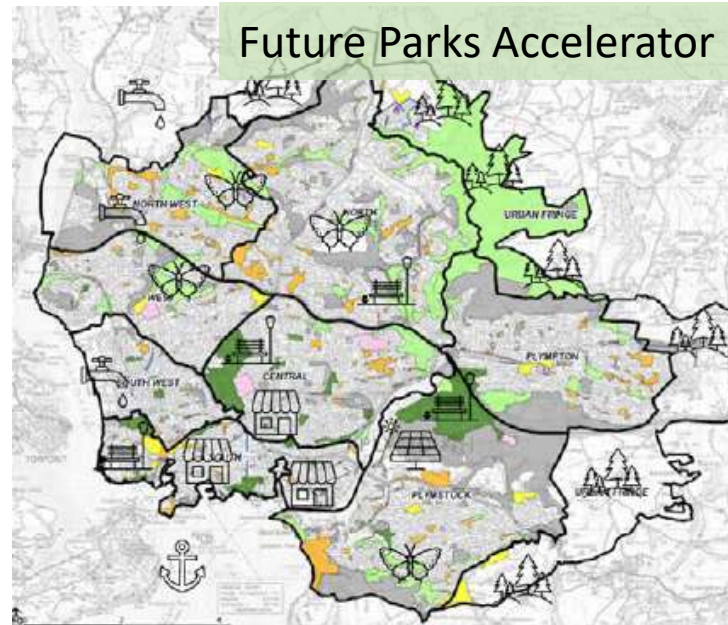
In line with CF 'core pillars' and CF 'ingredients'

Setting outcomes

Delivering canopy cover, carbon, health and wellbeing, skills & jobs and biodiversity targets



Delivery – Connecting and Growing



Outcomes

1. Jobs and Skills for young people.

2. Improving health and wellbeing and reducing inequality.

Youth panel to steer creation and management of PCF.

3. Creation of high quality, ecologically resilient woodland for the 21st century and our future generations.

Nature based solutions and re-wilding. Including potential expansion of re-introduction programme such as beavers.

Delivery of Plymouth's Climate Emergency Action Plan.



2. Support local communities

1. Support regeneration and growth



3. Creating Better Places



A Partnership Approach



Devon
Wildlife Trust



Our partners say...

John Deakin, Head of Trees and Woodland



“We fully support the exciting proposal for an urban community forest in Plymouth, both to develop the treescape in the city and create wooded corridors to the surrounding countryside. Through linking with the wider community forest network, the Plymouth proposal will provide a richer environment for residents to enjoy improving their health and well-being and create economic opportunities in the city.”

The Woodland Trust welcomes the Plymouth Community Forest bid as a significant, timely and much needed opportunity to build on strong existing collaborative work for trees and woods in the city. Although great work is underway, Plymouth remains a city with high levels of deprivation and health inequalities. Plymouth’s proposals further come at a time of climate emergency, ecological breakdown, and economic and health crises in the fallout of the Coronavirus pandemic. A Plymouth Community Forest will positively respond to these interrelated crises – helping reconnect communities to nature and improving health outcomes, provide new opportunities for skills and employment, support nature recovery across and beyond the city, and support mitigation and adaptation to a changing climate.

The building blocks – strategy, strong partnerships, evidence, a capable team, political will and public support – are in place in Plymouth. This bid presents an exceptional opportunity to inject significant extra resource to unleash Plymouth’s potential as a successful Community Forest for people and nature.

Ross Kennerley, Regional Director – South West



Questions ?

