

Integrated Health and Social Care Services in Camden

APSE Social Care Forum – Friday 8th July 2016

Cllr Georgia Gould

Agenda

1. Integration planning at National and Local Level
2. Planning at a local level
3. Some examples of integrated working
4. What we have achieved
5. How do we make it work
6. Next steps

Integration planning at National and Local Level

- Five-Year Forward View
 - Financial challenge
 - Closer integration
 - Transforming primary care
 - To address 3 gaps
 - Health and Wellbeing
 - Care and Quality
 - Funding and Efficiency
- Sustainability and Transformation Plans (STPs)
 - Deliver the Forward View
 - Integration across North Central London (NCL)
 - Camden
 - Islington
 - Barnet
 - Haringey
 - Enfield
 - Built around needs of local populations
 - Show how local service will
 - Evolve
 - Become sustainable
 - Submitted June 2016
 - Implementation – Autumn 2016

Integration in Camden

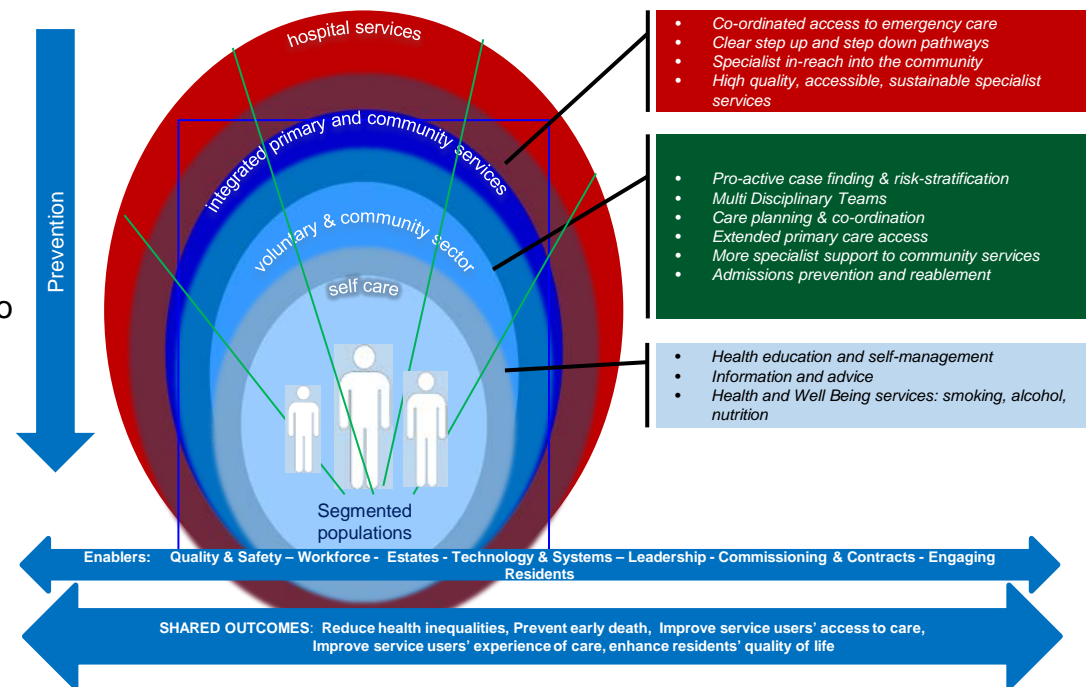
- Camden Local Care Strategy (LCS)
 - Vision for whole system transformation
 - Deliver high quality care
 - Bring stakeholders together to agree:
 - Single model of delivery
 - Sustainable system approach
 - Shared programme of work
 - Initial focus on:
 - Increasing capacity, skills and integration of primary and community care

Camden's Model of Care

- Designed to:
 - Support financial stability
 - Deliver joined up care, closer to home
 - Invest in prevention and supporting residents to look after themselves
- Whole systems outcomes
 - Reduce health inequalities
 - Prevent early death
 - Improve access to care
 - Improve experience of care
 - Enhance quality of life

Better Care Fund Programme

- Aligned with LCS and STP
- Three themes
 - Living well in the community
 - Ensuring safe and timely hospital discharge
 - Streamlined and effective access and response
- Rapid Response Service (avoiding admissions)
- Co-located social work teams
- Step-Down Beds and Reablement (avoid DToCs)



Health and Social Care Integration in Primary Care

- To gain understanding of how health, mental health and social care can be integrated
 - Social workers, care navigators and mental health professionals co-located in GP practices
- Social Care in Primary Care
 - Aims
 - Partnership working
 - Avoid inappropriate contacts
 - Joined up care planning
 - Improved referral pathways
 - Popular with GPs
 - Over 500 referrals in 6 months
 - Assessments completed within 5 working days
- Care Navigators (Age UK):
 - Aims
 - Frail and elderly and LTC patients
 - Patients attend appointments
 - Signposting
 - 700 referrals
 - 312 case managed
 - 722 onward referrals
- Team Around the Practice
 - Mental health service provision
 - Face-to-face therapeutic work
 - Increase social inclusion
 - User self-manage
 - Right support, from right person at right time
 - Since July 2015
 - 732 referrals from 33 surgeries

Social Care and Hospital Integration

- Social workers co-located in UCLH, Royal Free and St Pancras Hospitals
 - Aims
 - Promote closer relationships
 - Test models of provision
 - Enhanced Reablement Team
 - Reablement provision for hospital discharges
 - Avoid DToCs
 - Personalised support plans
 - Consistency of Care
 - 94 customers supported (1 moved to long-term care)
 - 7 Day Working in Social Care
 - Social workers in UCLH and Royal Free over weekends
 - Avoid DToCs and hospital admissions
 - 51 admissions avoided/310 discharges facilitated
 - Social Work Discharge Facilitators
 - Reduce DToCs
 - Worker at UCLH
 - Facilitate timely discharges to Step-Down Beds
 - Worker at Royal Free Hospital
 - Out-of-borough discharges

NCL Shared Estates Pilot and Local Digital Roadmap

- Estates
 - Pilot across NCL
 - Unlock potential in under-utilised NHS estate
 - Benefits
 - Modernise health estate
 - Delivery better care to residents
 - Release land for housing
 - Schemes brought forward to test new approaches
 - Borough Level
 - Primary Care estate
 - Local Estates Strategy
 - Evidence base for primary care services
 - Underpins Estates and Technology Transformation Fund for primary care
 - Key enabler of Camden LCS
- Digital Roadmap
 - Set out in Five Year Forward View strategy
 - 22 organisations across NCL agree how to use:
 - Digital technologies
 - Information
 - Models of care that are:
 - Proactive; Predictive; Participatory; Person Centred
 - Six themes to roadmap
 - Digitally activated population
 - New and enhanced care delivery models
 - Record access and management
 - Insights driven health system
 - Workforce integration and enablement
 - Digital delivery model

Camden Integrated Digital Record (CIDR)



- NHS Camden CCG integration initiative
 - Allow data sharing across multiple providers
 - Link records
 - Secure in one place
- Benefits
 - Holistic view
 - 24/7 access
 - Higher quality patient experience
 - Reliable prescribing
 - Reduced cost
- What information is in CIDR?
 - GP Data
 - Social Care
 - Royal Free Acute
 - Community Data
 - Mental Health Data
 - UCLH Acute