

# Sustrans and Active Travel in Scotland

Karen McGregor  
Scotland Director



# Content

Sustrans – our role and what we do

National context in Scotland

Case for Support - Walking and Cycling Index

Strategic Partnerships – Local Authority Embedded Officer Programme

Infrastructure funding - Places for Everyone Programme

- Case study 1 Scottish Borders – Hawick Active Travel
- Case study 2 Glasgow City Council – Connecting Woodside

Challenges and opportunities

# About Sustrans

UK wide Charity

Our mission to make it easier for people to walk, wheel and cycle

4 big programmes of work in Scotland

- National Cycle Network
- **Places for Everyone**
- Behaviour Change
- **Strategic Partnerships**



# National Context in Scotland

Strong policy, political and financial support

Current annual budget £150m

Commitment to increasing budget to £320m by 2024/25

Dedicated Active Travel Minister

Capital and revenue funding

Wide range of programmes and projects aimed at both changing behaviours and provision of infrastructure

# Walking & Cycling Index

UK's biggest Walking, Wheeling and Cycling Assessment

Seven Scottish cities

For everyone: Accessible and robust local data - what is there and what people want

Tracks change over time

Enables strategic partners to evidence demand for active travel infrastructure.



# Walking & Cycling Index

## Scotland summary data

- People walk more frequently than any other mode of transport
- Residents want to see more government spending on walking, cycling and public transport
- A high level of support exists to make streets better for walking, wheeling, and cycling



# Strategic Partnerships

## Embedded Officer Programme

- Provides strategic support to partners to make the case for increased funding and commitment to active travel.
- 18 National and Local authority partnerships
- Adds capacity and expertise through Senior Project Officers
- Facilitates a strategic approach to active travel strategy development and delivery
- Ensure a holistic approach to active travel development



# Embedded Officer Programme

Participating Local authorities	Participating National Organisations
<ul style="list-style-type: none"><li>• Edinburgh (2)</li><li>• Glasgow (2)</li><li>• Stirling</li><li>• Dundee</li><li>• Inverclyde</li><li>• Perth and Kinross</li><li>• East Lothian</li><li>• Orkney</li><li>• D&amp;G</li><li>• Angus</li><li>• Moray</li><li>• Highland Council</li><li>• East Renfrewshire</li><li>• Midlothian</li><li>• Fife</li></ul>	<ul style="list-style-type: none"><li>• NHS</li><li>• Cairngorms National Park Authority</li><li>• Historic Environment Scotland</li></ul>





# Infrastructure Funding Places for Everyone

## Programme aims

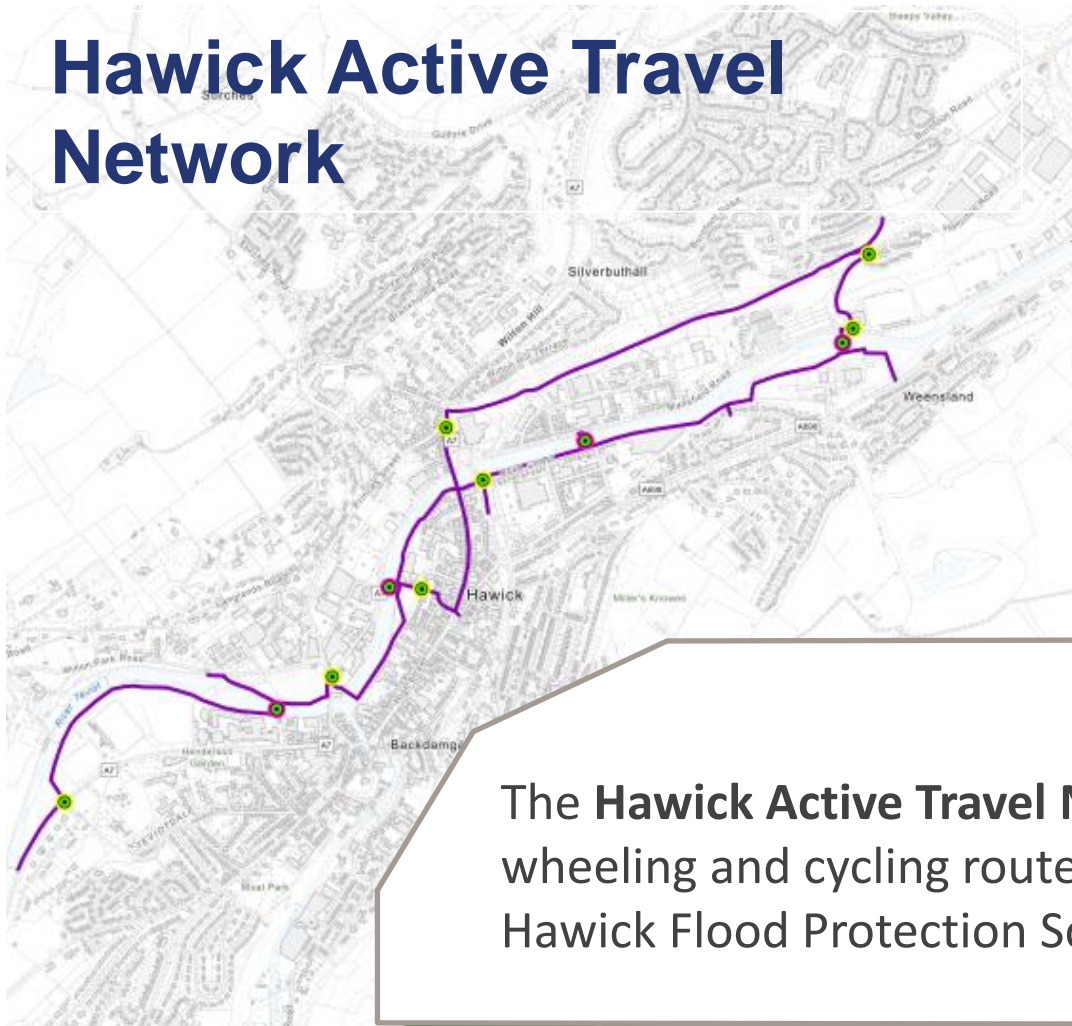
Increase the number, and impact, of active travel infrastructure projects being delivered across Scotland

More journeys made by walking, wheeling and cycling and fewer trips by car

Equity – access to safe and effective walking, wheeling and cycling infrastructure for ***all***

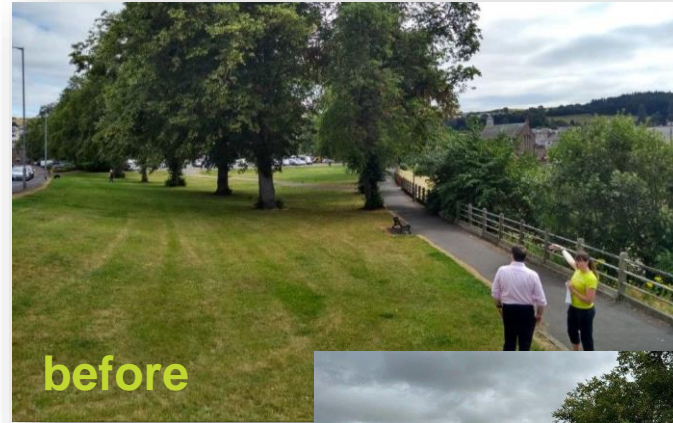


# Hawick Active Travel Network



The **Hawick Active Travel Network** will create a walking, wheeling and cycling route along the entire length of the Hawick Flood Protection Scheme

# An enhanced environment with great public spaces for all



A high quality, safe and accessible walking, wheeling and cycling network

# Connecting Woodside

Funded and supported by Sustrans through Places for Everyone since 2018

Total funding of £7million

Planned completion in 2025

Will deliver approximately 2km of protected cycle routes, and numerous other quiet routs and junction/crossing enhancements

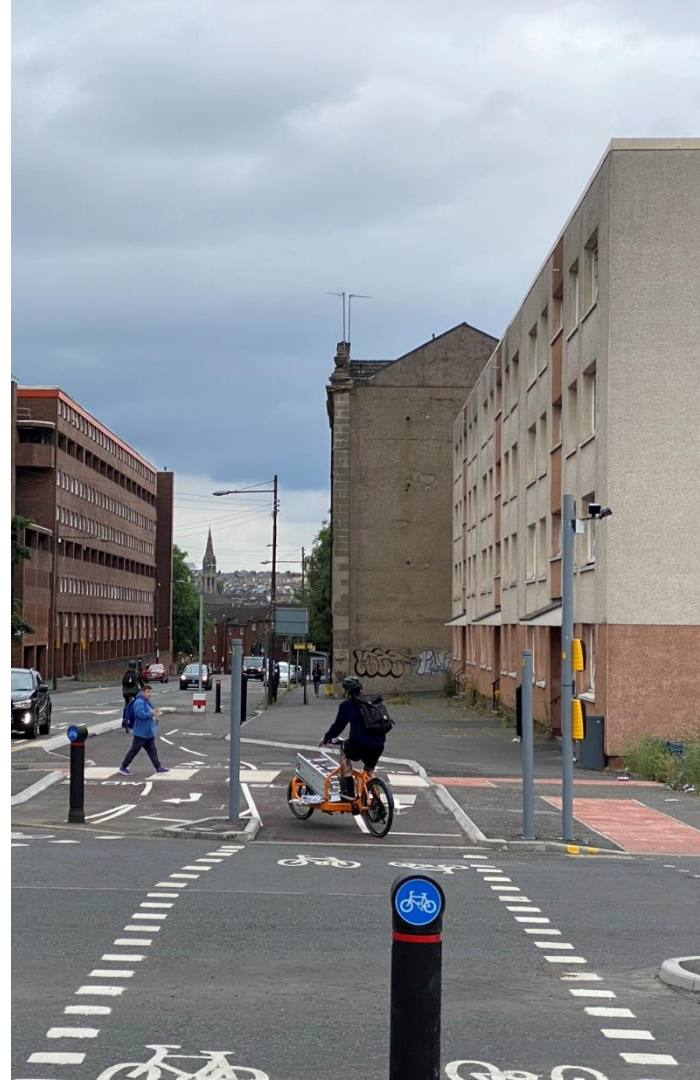


# Garscube Road

Design developed in collaboration with Glasgow City Council and Sustrans

Significant reallocation of road space and improved crossing for users

Introduction of green infrastructure throughout the route, including trees and low level planting





Garscube Road before



Garscube Road now



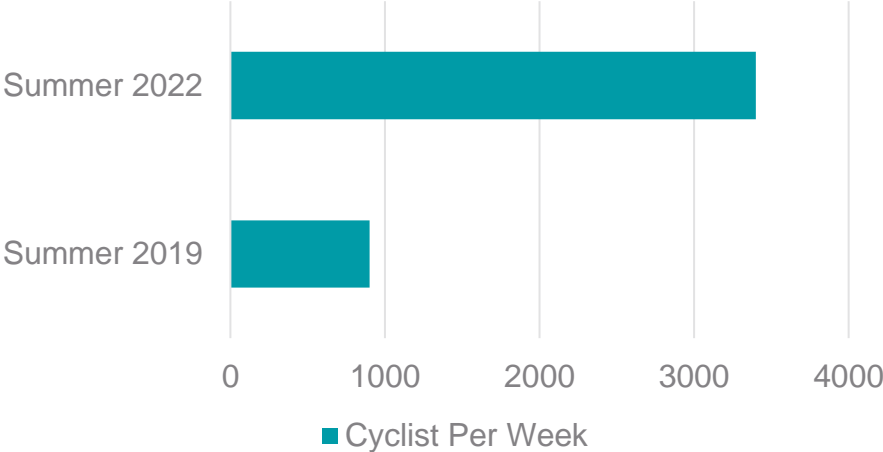
Garscube Road before





Garscube Road now

# 300% Increase in cycle use



# Active Travel - Challenges & Opportunities

- Pace of delivery
- Competition for scarce skilled resource
- Strong political and senior leadership locally and regionally
- Road space reallocation / retro-fitting infrastructure
- Population-wide behaviour change
- Post pandemic impact - supply chain issues and innovative solutions
- Scale of ambition and future funding

Sustrans is the charity making it easier for people to walk and cycle.

We connect people and places, create liveable neighbourhoods, transform the school run and deliver a happier, healthier commute.

Join us on our journey.

[www.sustrans.org.uk](http://www.sustrans.org.uk)

Registered Charity No. 326550 (England and Wales) SC039263 (Scotland)  
VAT Registration No. 416740656.

