



## Mission Statement

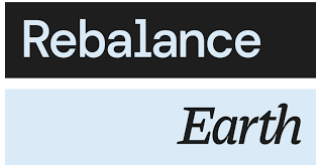
### Connecting Environment & People

## Vision

We lead in the care of Fife's outdoors. Working together with you, we create a healthier environment that supports wellbeing and sustains the balance between people and the natural world

Strategic Objective

More things done better





NFCA Membership  
March 2024



# We have....

---

- Built Fife's River Restoration Programme securing over £5m in investment to date
- Incubated the Nature Finance Fife Initiative
- Established the Nature Finance Certification Alliance
- Produced a Community Inclusion Standard for natural capital projects
- Established the Fife Outdoor Tourism Infrastructure Programme
- Secured an additional £2,652,000 for project delivery and supporting FCCT core costs



- Natural capital delivers an opportunity for farmers and landowners to **diversify and increase revenues**
- Farmers and landowners looking to start or expand their natural capital portfolios can be faced with a number of hurdles



Soil  
40ha



Biodiversity  
4ha



Hedgerow  
2ha



Biochar  
20ha



Woodland  
20ha



Grassland  
5ha



Peatland  
10ha



Challenges of land use change

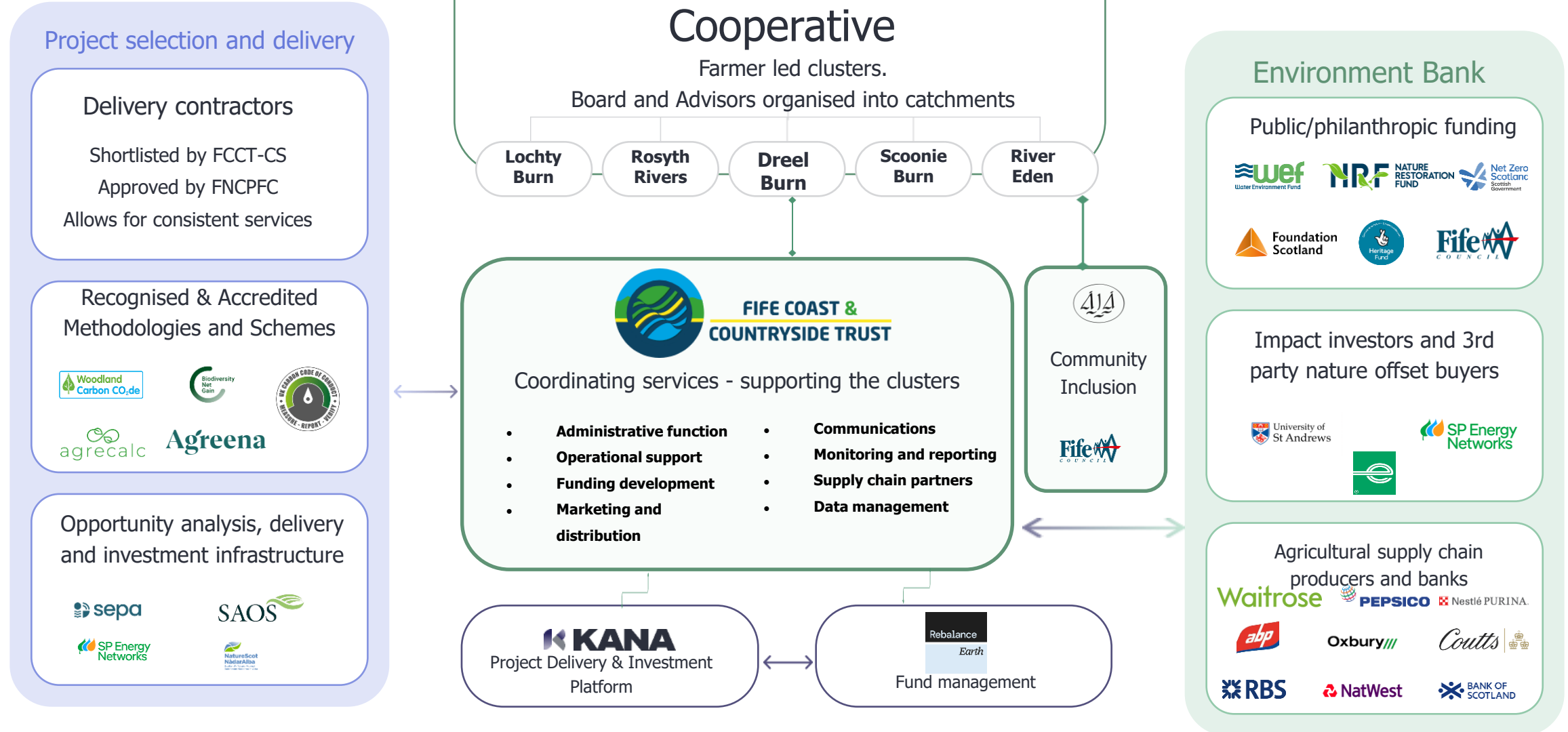


Lack of expertise



Financial uncertainty

# Our Investment Blueprint





# Comparing Other Approaches



**FIFE COAST &  
COUNTRYSIDE TRUST**

- Our approach has been informed by careful consideration of a range of existing delivery models, that are already in operation.
- We have selected the 'best' elements of each. Matching against the diverse needs of Dreel Burn farmers, that are reflective of the wider Fife-wide region and much of agricultural East of Scotland.
- Our approach is innovative in a number of ways, including the strong linkages with the local authority and local communities.

**LENs<sup>®</sup> | LANDSCAPE  
ENTERPRISE  
NETWORKS**

 **SOIL ASSOCIATION  
EXCHANGE**

  
**ENVIRONMENTAL  
FARMERS GROUP**

  
**THE NORTH EAST COTSWOLD  
FARMER CLUSTER CIC**

  
**WENSUM FARMERS**  
UPPER WENSUM ENVIRONMENTAL CLUSTER GROUP CIC



# What next....

---

- Establish the Natural Capital Producer's Cooperative
- Build capacity within FCCT (Plc) as project developer, developer manager, and promoter
- Assess feasibility of a Fife Environment Bank
- Fife wide blended finance river restoration programme
- Integrate with partner approaches and FCCT core activity