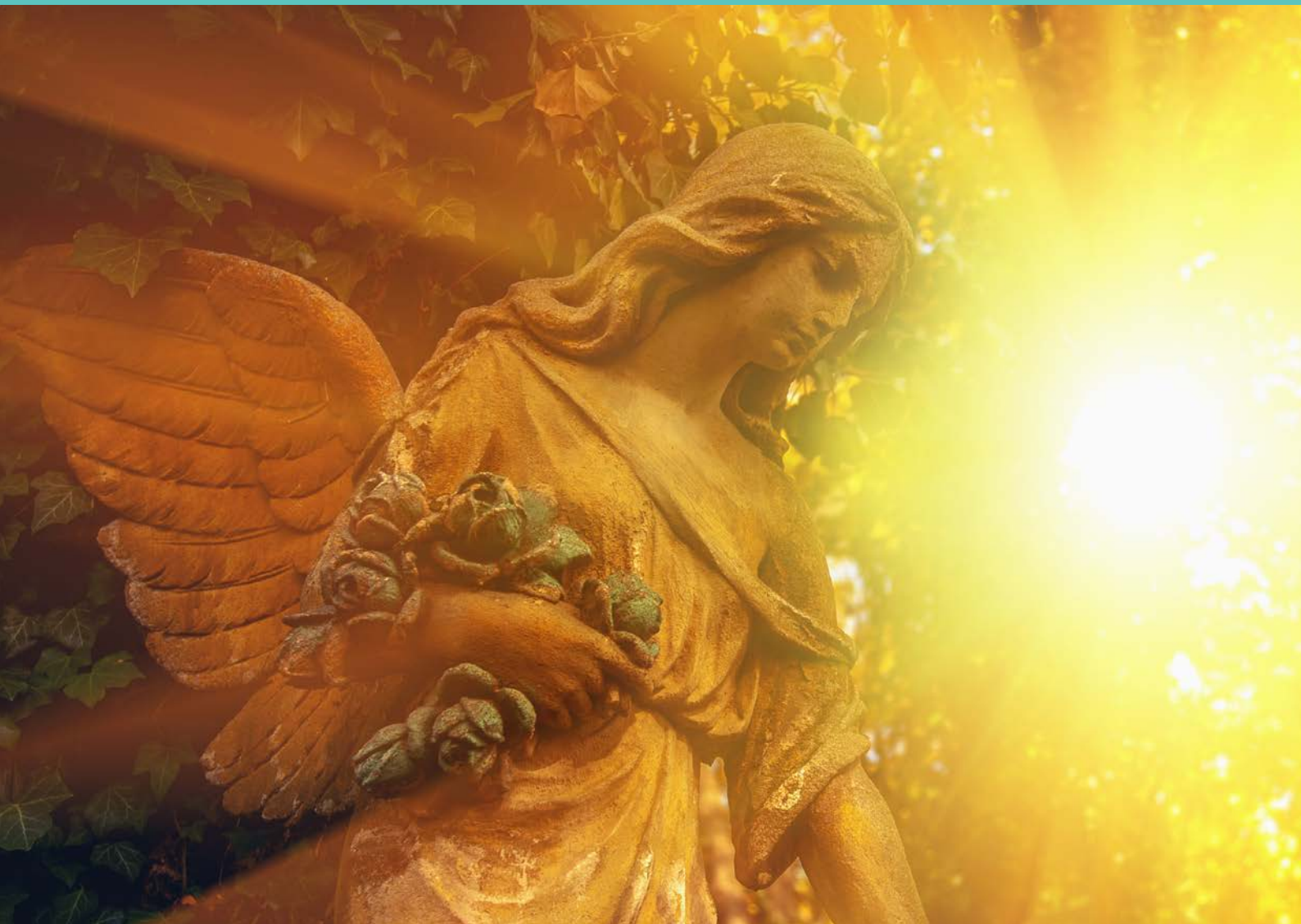




APSE Cemeteries and Crematoria Seminar 2022



Thursday 14 April

Yarnfield Park Training & Conference Centre, Yarnfield, Stone,
ST15 0NL

Programme

9:00 Registration and Exhibition Viewing

10:00 *Session one*

The Results of APSE's State of the Market Survey – Cemeteries and Crematoria 2022.

- Results of the state of the Market Survey 2022
- Key findings — negatives and positives
- New challenges for the bereavement sector

Paul O'Brien, APSE Chief Executive

'Climate Change Our Legacy?' Reflections on the state of the bereavement sector and the climate emergency (2021)

- Establishing a starting point on the environment
- Engaging with the bereavement sector to identify challenges
- Developing a pathway to 2050

Jon Cross, FloD, Environmental Stewardship Group

A New Cemetery for Widnes – Catering for now but planning for a Green Future

- The challenges of creating a new cemetery.
- Catering for current cultural norms but being ready for a greener future.

Paul Wright, Operational Director, Community & Environment, Halton Borough Council

Audience question and answer session

11:15 Coffee & exhibition viewing

11:45 *Session two*

European cemeteries as cultural and historical assets of exceptional importance

- The origin and membership of the Association of Significant Cemeteries in Europe (ASCE)
- What makes a cemetery 'significant'?
- UK and European examples of significant cemeteries

John Moffat, ASCE UK steering group representative

Skills shortages and recruitment barriers: What's happening within the marketplace!

- COVID! What did we learn?
- Skills shortages across Bereavement services
- Solutions for the future

Andy Mudd, Head of APSE Solutions

Serving Better Together - "What does Digital mean for Bereavement Services in 2022?"

The challenges of legacy systems

- De-risking and increasing efficiencies
- The changing customer experience

Niall Adams, PlotBox Solutions Consultant

Audience question and answer session

13:00 Lunch and Exhibition Viewing

14:00 *Session Three*

Creating resilience during COVID-19

- Redeployment
- Needing extra help
- Culture
- Some humble observations as a Parkie!

Philippa Reece, Parks and Foreshore Manager, Adur & Worthing Councils

Wilder Churches – supporting communities to make space for nature in churchyards and burial grounds

- Introduction to the Wilder Churches initiative, a partnership between Somerset Wildlife Trust and the Diocese of Bath and Wells
- On-line awareness training to recognise and appreciate the wildlife in our local churchyards and burial grounds
- Examples of how supporting communities has increased the value for wildlife in churchyards and burial grounds -

Dr. Pippa Rayner, Engaging with Nature Coordinator, Somerset Wildlife Trust & Sara Emmett, Interim Diocesan Environment Officer Bath & Wells

APSE Memorial Safety Inspection App

- Where did the need come from?
- How the App can help protect your service
- Possible future improvements.

Debbie Johns, Head of APSE Performance Networks

Audience question and answer session

15:15 Seminar close

Seminar Objectives

About the Seminar

Bereavement Services is universally recognised as a key council service.

As well as meeting the needs of the bereaved, the service is coming under increasing pressure to become commercially self-sustaining and more environmentally friendly whilst transparently providing value for money.

In a time of austerity, local authorities continue to find their budgets shrinking and, as such, managers and staff alike are having to look for ways to compensate against these losses, either through service efficiencies, generating new sources of income, or innovative service delivery methodologies such as partnership working.

More recently the service has played a central role in dealing with the impact of the current pandemic – being referred to as the 4th emergency service by many.

The service area is also facing changing cultural and physical constraints and requirements. As well as facing competing land use demands, what land cemeteries do occupy is expected to be managed in a way which conserves and preserves historical and cultural assets as well as providing increased opportunities for biodiversity.

Whilst these challenges have to be met, the heart of the service is still to ensure it considers its customers' needs at the most vulnerable time in their lives.

Service delivery is, therefore, having to change. APSE recognises this need and, through the provision of this seminar and its wider networking services, APSE can help elected members, managers and officers hear examples of how these changes can be brought about.

Therefore, the aim of the seminar is to highlight best practice and innovation, which, together, will prove invaluable to the development of future Bereavement Services.

This seminar is a **MUST ATTEND EVENT** for those officers and members who want to look at new ways of understanding and coping with cemetery and crematoria issues, whether these be financial, environmental, technological or social.

Speakers will include:

- **Paul O'Brien, APSE's Chief Executive** will set the scene for the seminar by discussing the results of the APSE State of the Market Survey 2022 and highlighting some of the key issues facing the bereavement industry which will be covered in more details during the seminar.
- **Jon Cross**, from the **Environmental Stewardship Group**, will outline the reasoning behind the report 'Climate Change Our Legacy? Reflections on the state of bereavement sector and the climate emergency' an essential document for the industry, its recommendations will help the sector reduce its carbon emissions but also operate in a more environmental and sustainable manner.
- **Paul Wright, Operational Director, Community and Environment at Halton Borough Council** will be speaking about the challenges of creating a new cemetery which will include provision for natural burials and will explain how this new service element will need to be accompanied by a cultural change shift to gain acceptance to this new offer as well as future-proofing the cemetery for changing community demands and environmental requirements.
- **John Moffat**, from **The Association of Significant Cemeteries in Europe (ASCE)** will outline the work of the association using examples of cemeteries across the UK and Europe to highlight the historic, cultural and social value of these spaces.
- **Andy Mudd, Head of APSE Solutions**, will be looking at the growing problem of recruiting suitably qualified bereavement staff highlighted during the COVID pandemic together with possible solutions.
- **Niall Adams, PlotBox Solutions Consultant** will explain how through the adoption of new technologies, services can help to protect their legacy through de-risking and increasing efficiencies in what they do, whilst keeping their customers at the heart of the service.
- **Philippa Reece, Parks & Foreshore Manager, Adur & Worthing Councils** will be outlining how her role changed during the recent pandemic to allow her to support her councils Bereavement Services which has resulted in her achieving new skills, abilities and qualifications bringing both added value to her position and the wider council skills base.
- **Dr. Pippa Rayner, Engaging with Nature Co-ordinator at the Somerset Wildlife Trust & Sara Emmett Interim Diocesan Environment Officer Bath & Wells Diocese** will explain why more than 100 parishes in Somerset have agreed to re-wild their churchyards and graveyards to help save valuable biodiversity habitats and by doing so, secure the long-term future of the flora and fauna which rely on and the role local communities are playing in achieving this goal.
- **Debbie Johns, Head of APSE's Performance Networks** will introduce the new Memorial Safety Inspection App, explaining the operational benefits, how it will improve the health and safety of both cemetery staff and visitor as well as the improvements to the wider benchmarking process.

Booking Information

Venue

**Yarnfield Park Training & Conference Centre,
Yarnfield,
Stone,
ST15 0NL**

Delegate Packages Exclusive of VAT

What's included?

The delegate fee covers attendance, delegates' documentation, lunches and light refreshments.

APSE member delegate fee: **£179 + VAT**

Non member delegates fee: **£265 + VAT**

Commercial delegates: **£375 + VAT**

Click [here](#) to reserve your place on this event

CANCELLATION & REFUND POLICY: Reservation is a contract. Substitution of delegates is acceptable any time in writing by email to **CKing@apse.org.uk**. Cancellations must be made in writing at least 10 working days before the event, and will incur a 20% administration fee. No refunds can be given for cancellations received less than 10 working days before the event or for nonattendance. In the unlikely event of cancellation by the organisers, liability will be restricted to the refund of fees paid. The organisers reserve the right to make changes to the programme, speakers or mode of delivery should this become necessary. If due to emergency action by UK Governments/Administrations or Public Agencies this event is postponed, for example for reasons of public health and safety, the organisers will transfer your booking to the replacement event or provide a credit voucher against a future event booking.