



DAF

# THE FUTURE OF HEAVY GOODS VEHICLES

**James Turner**

Product Marketing Manager

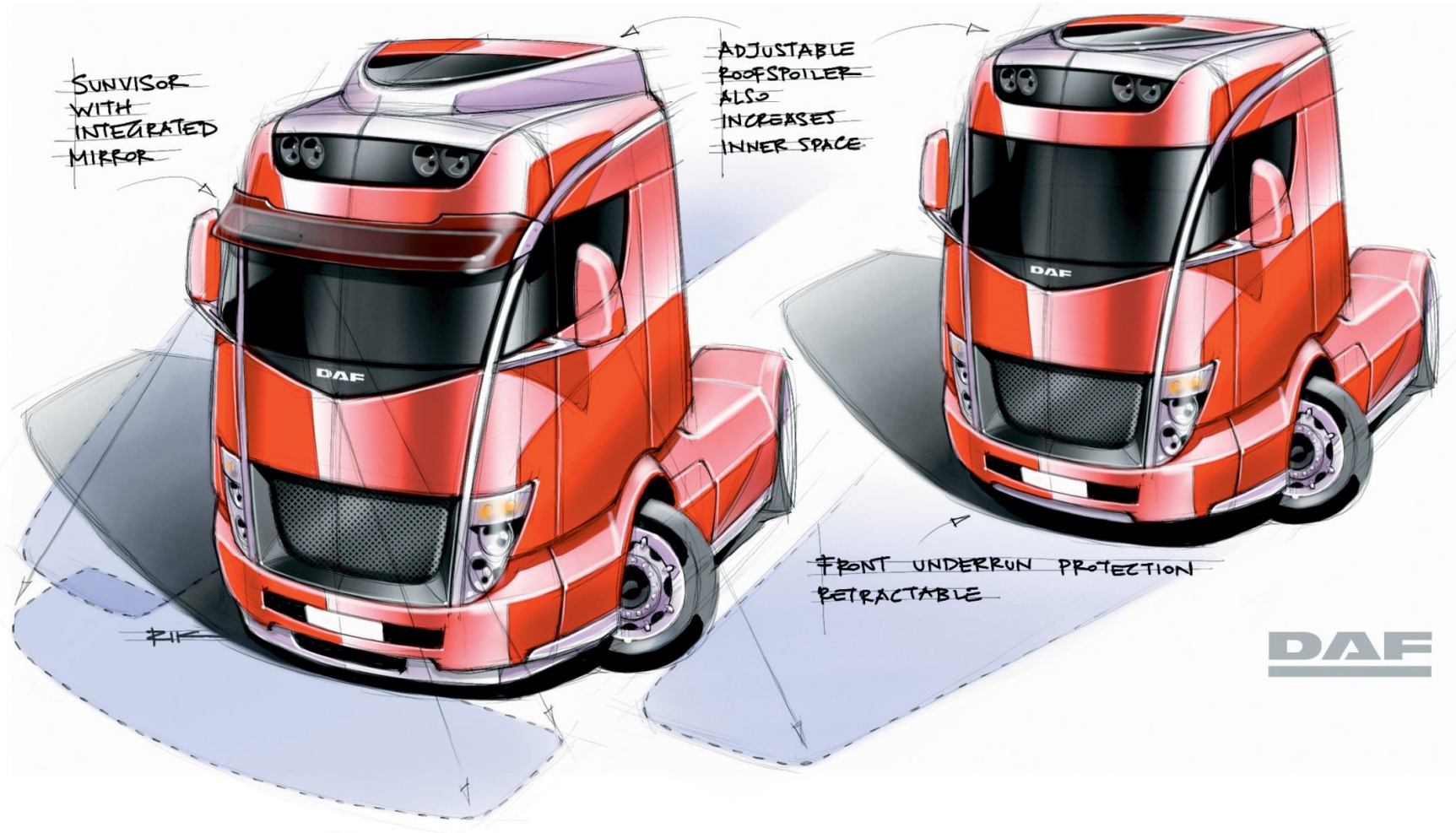




A bit about me...

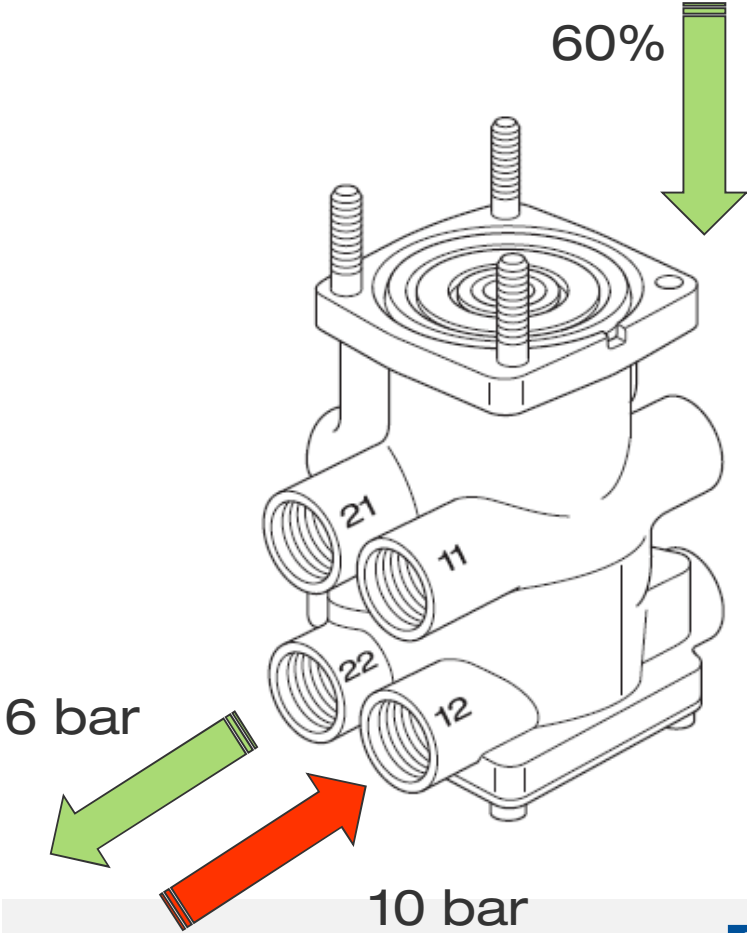
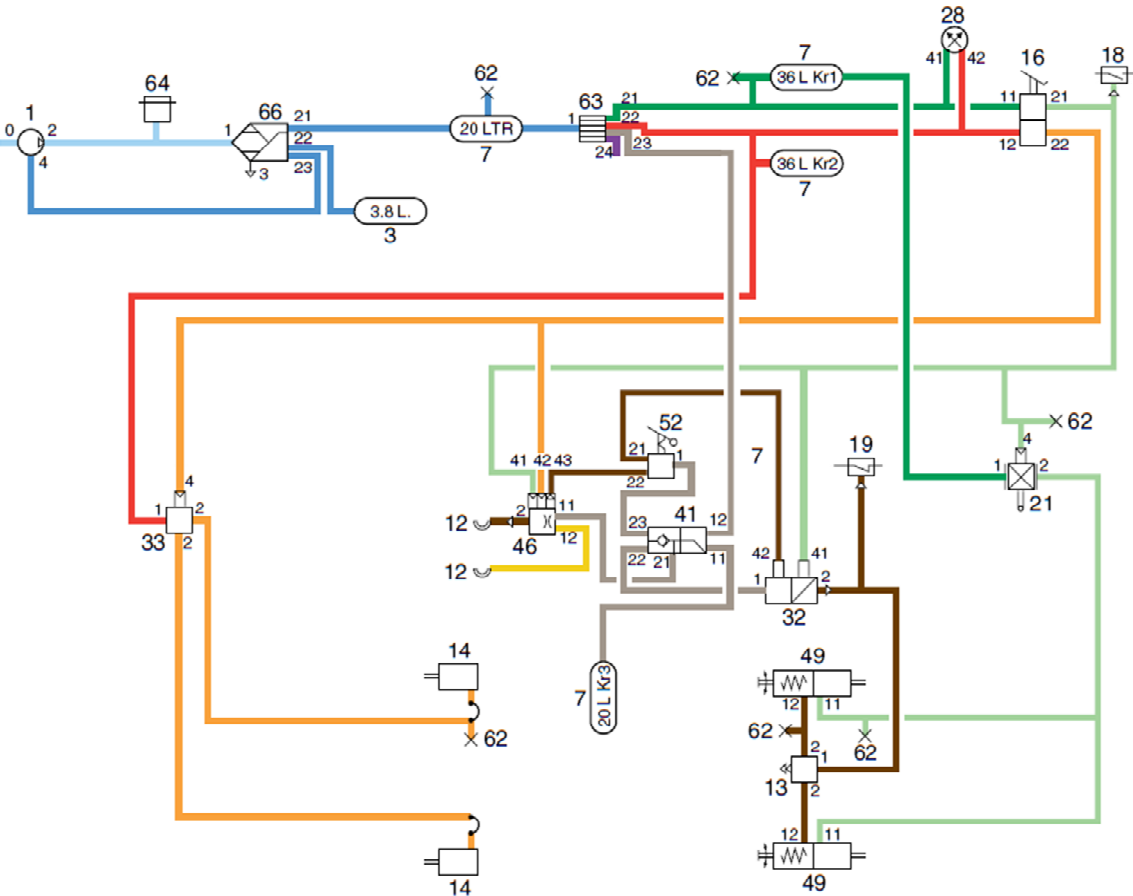


# ✓ WHAT DOES THE FUTURE HOLD FOR NEW TECHNOLOGY?

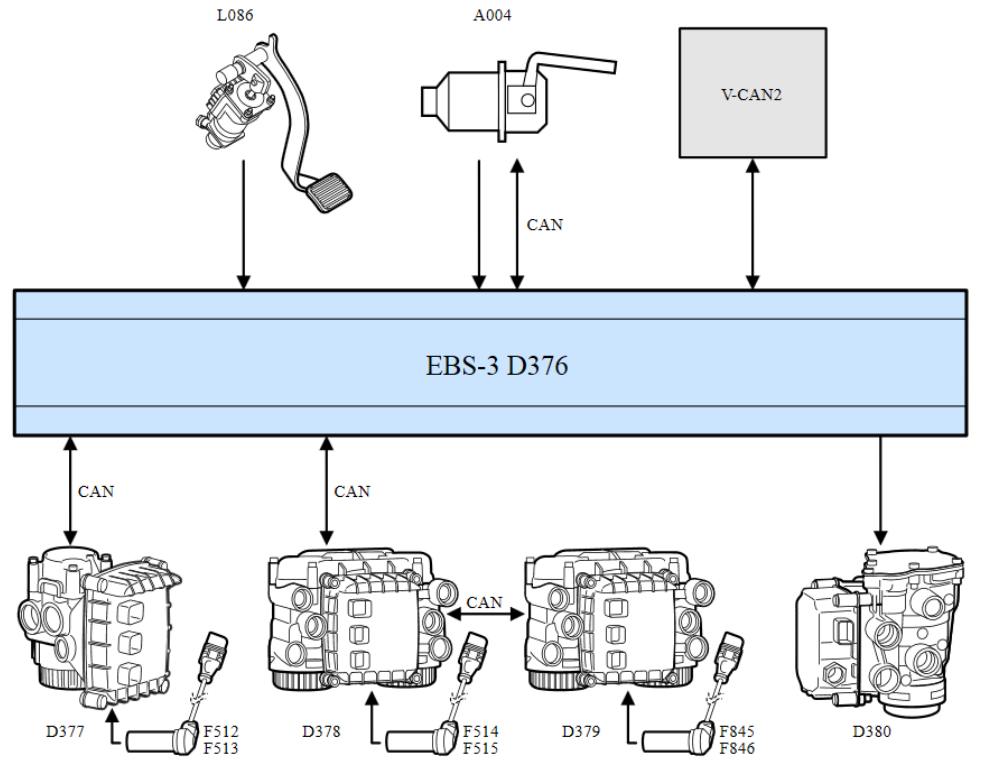
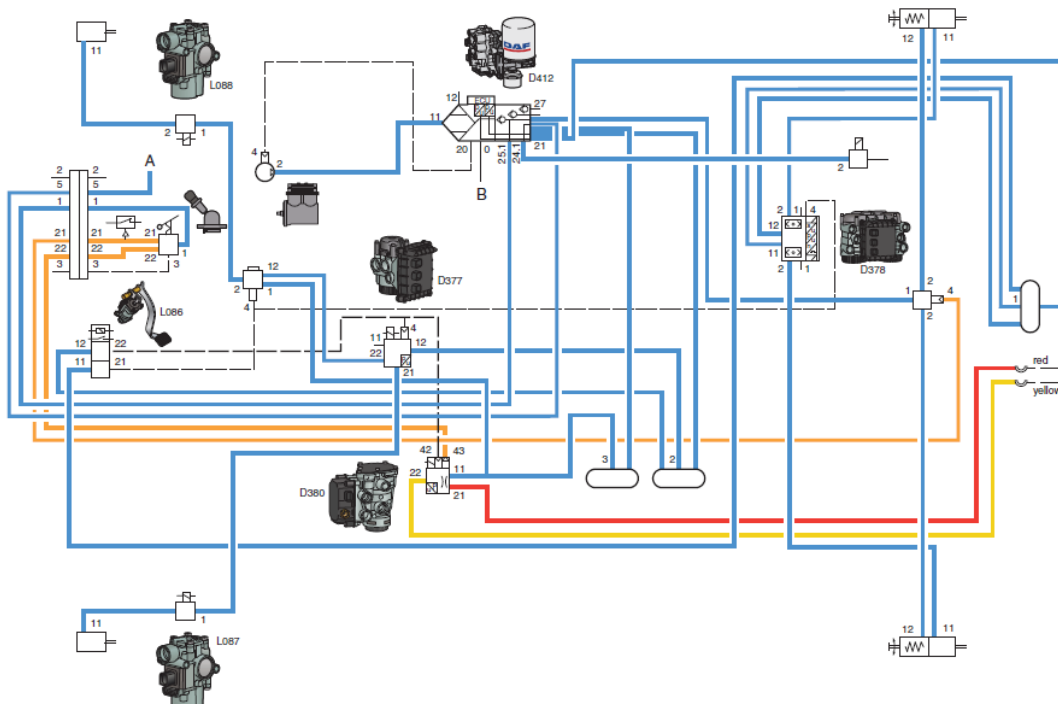




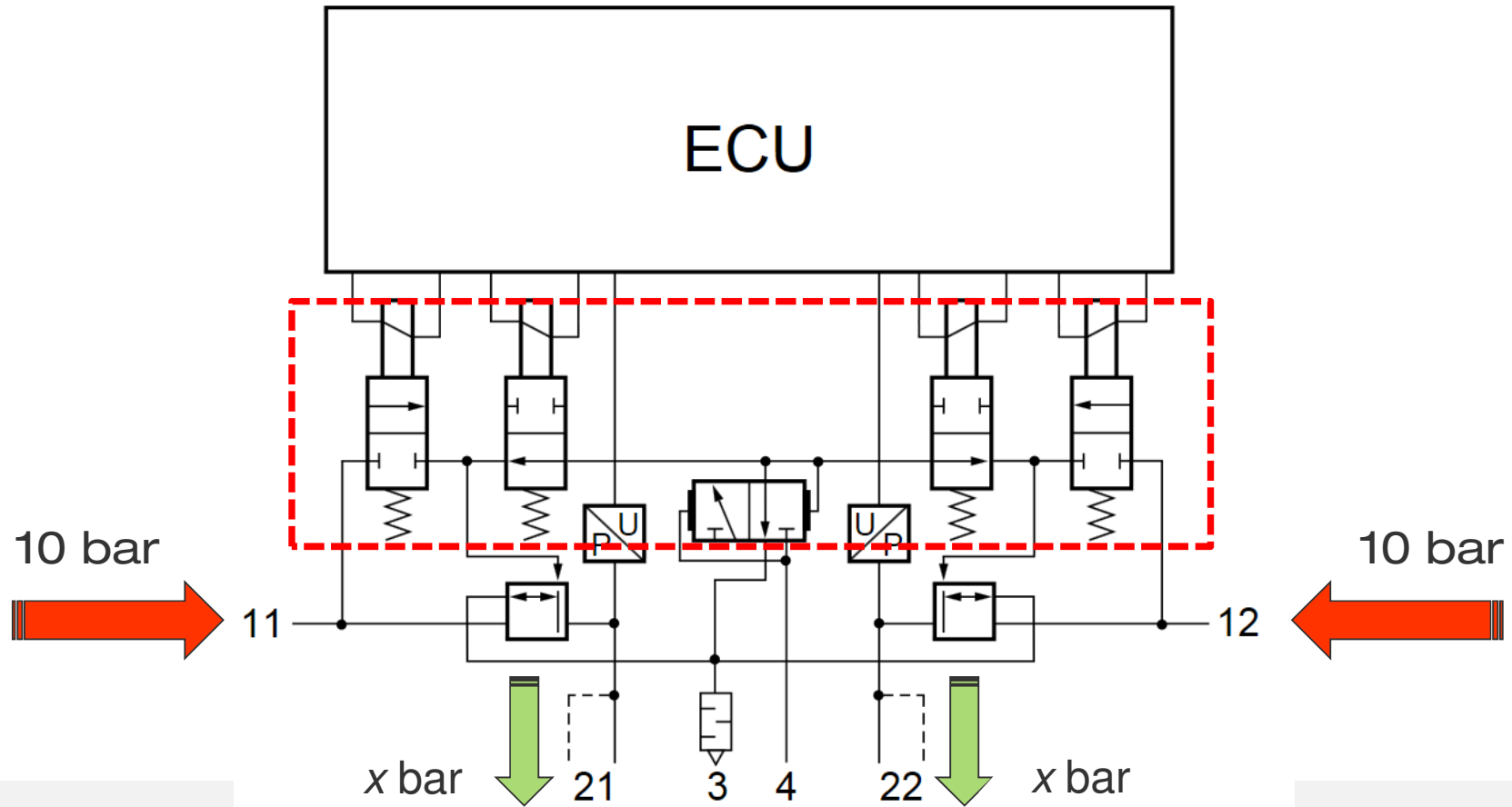
# FULLY PNEUMATIC BRAKING SYSTEM



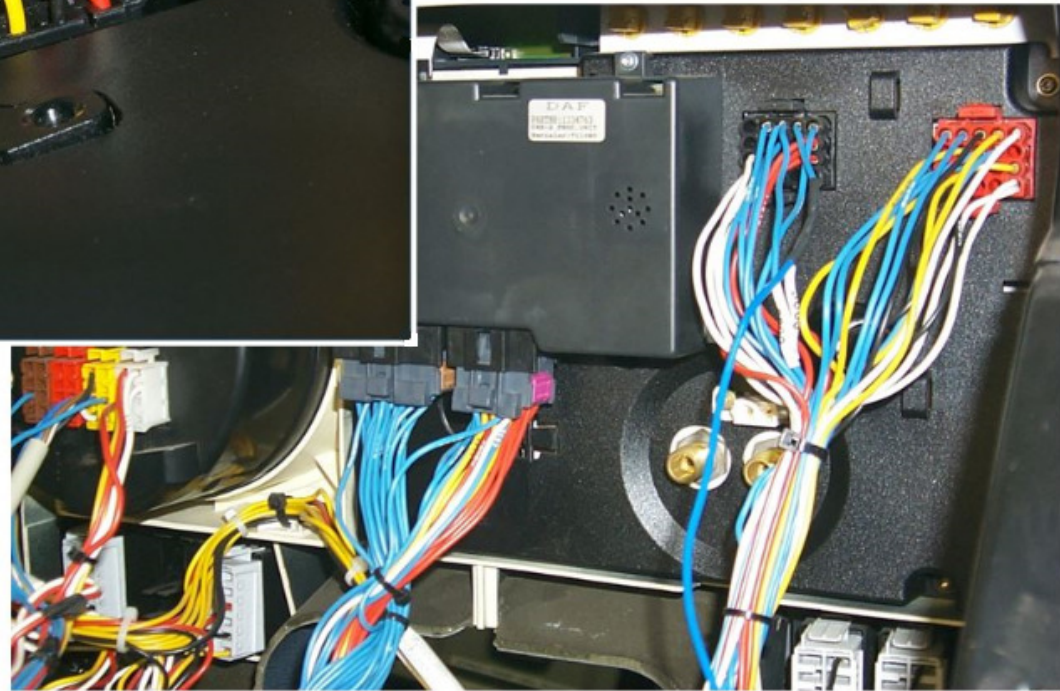
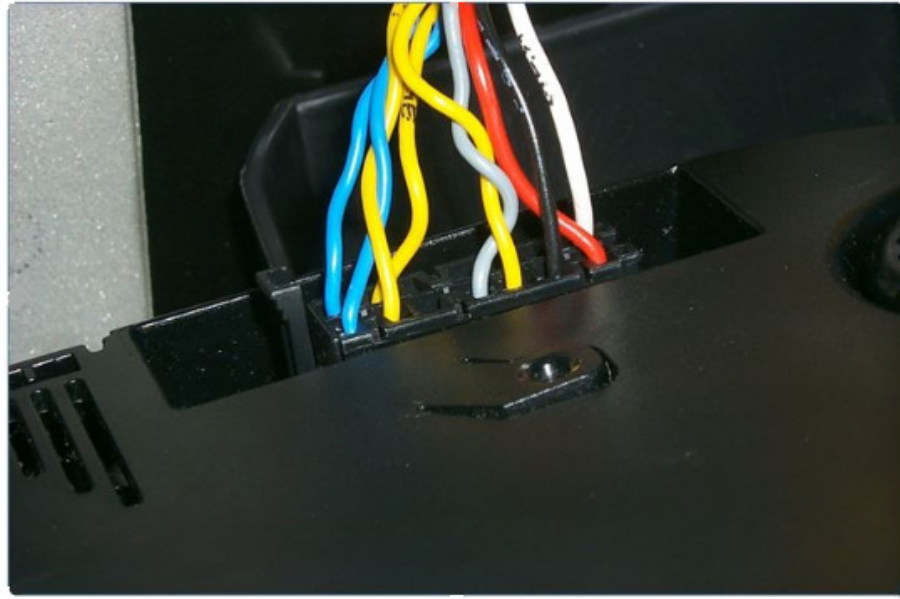
# EBS (ELECTRONIC BRAKING SYSTEM) V.3 [2016]



# VALVE OPERATION

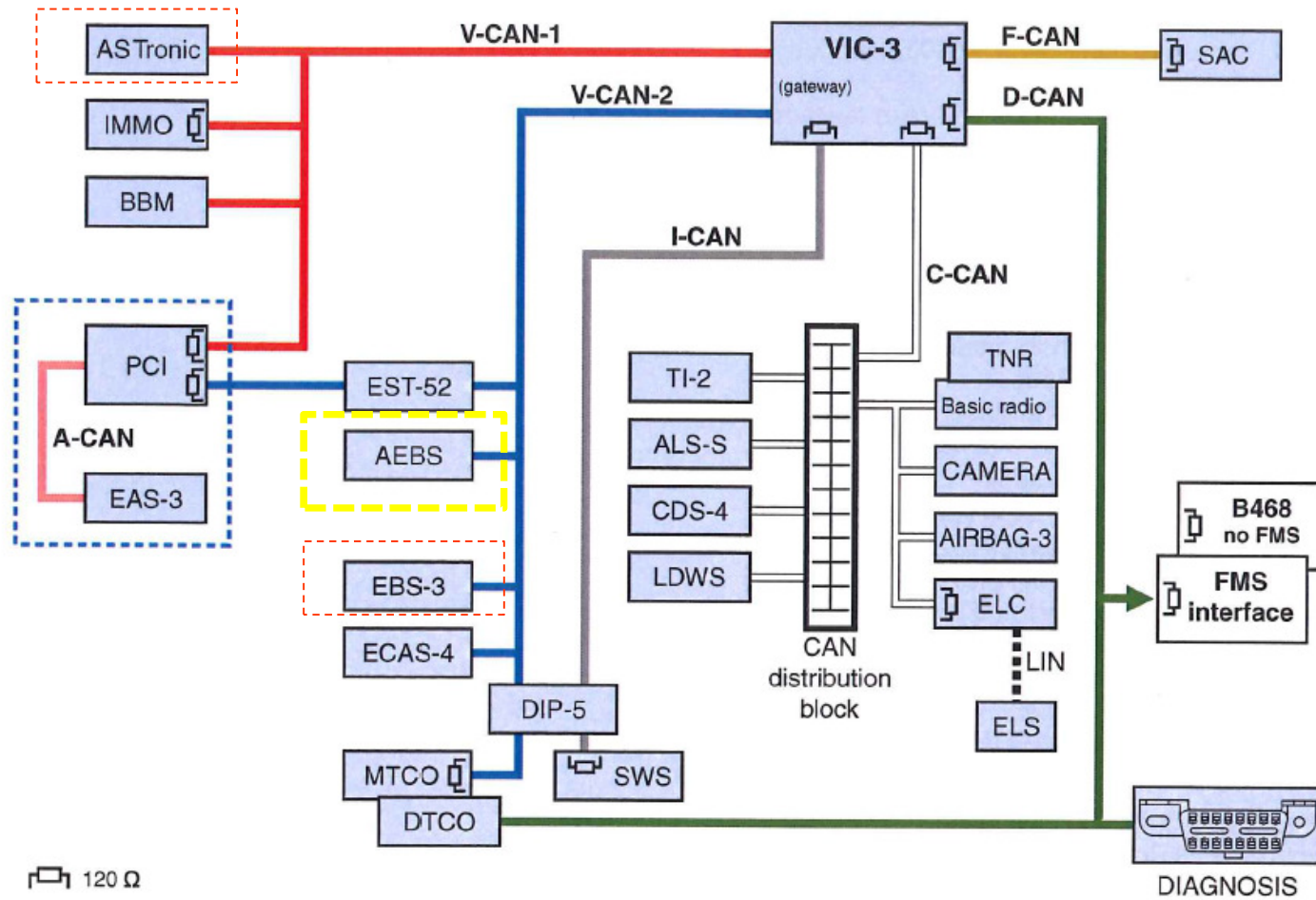


# CAN COMMUNICATION





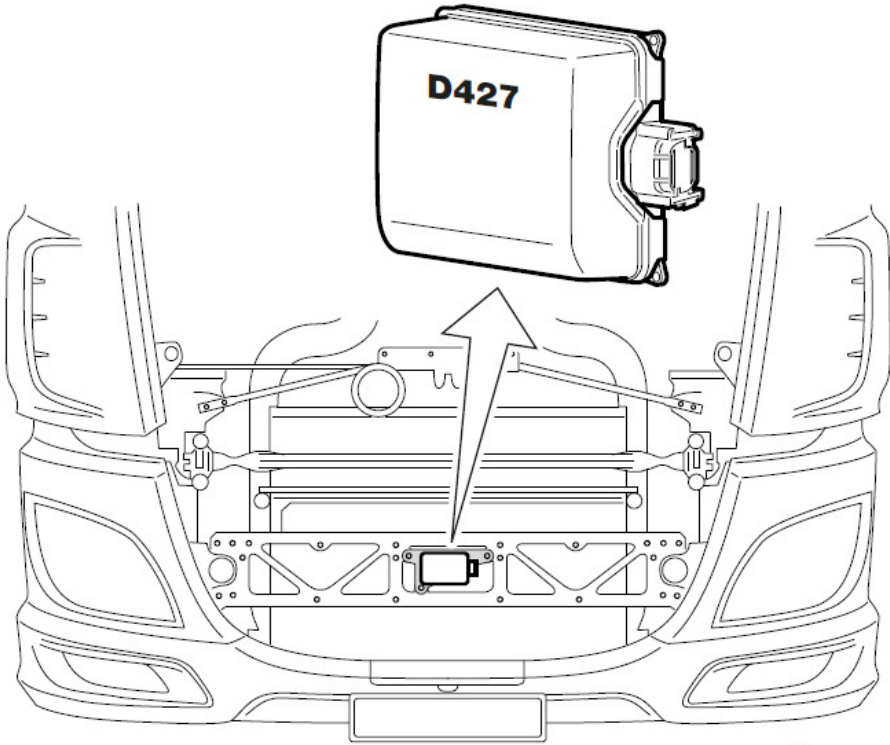
# CAN BUS



# AEBS (ADVANCED EMERGENCY BRAKING SYSTEM)

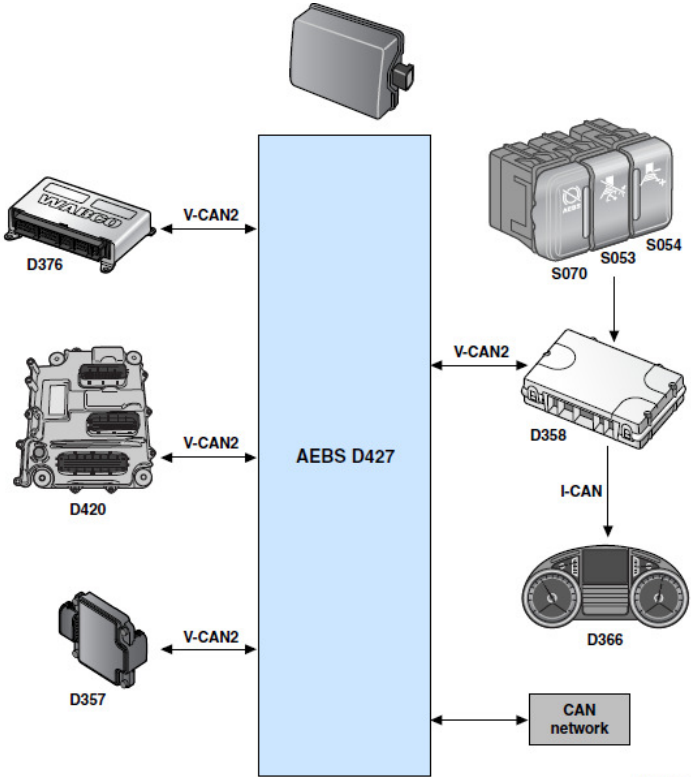


# AEBS (ADVANCED EMERGENCY BRAKING SYSTEM)



K103328

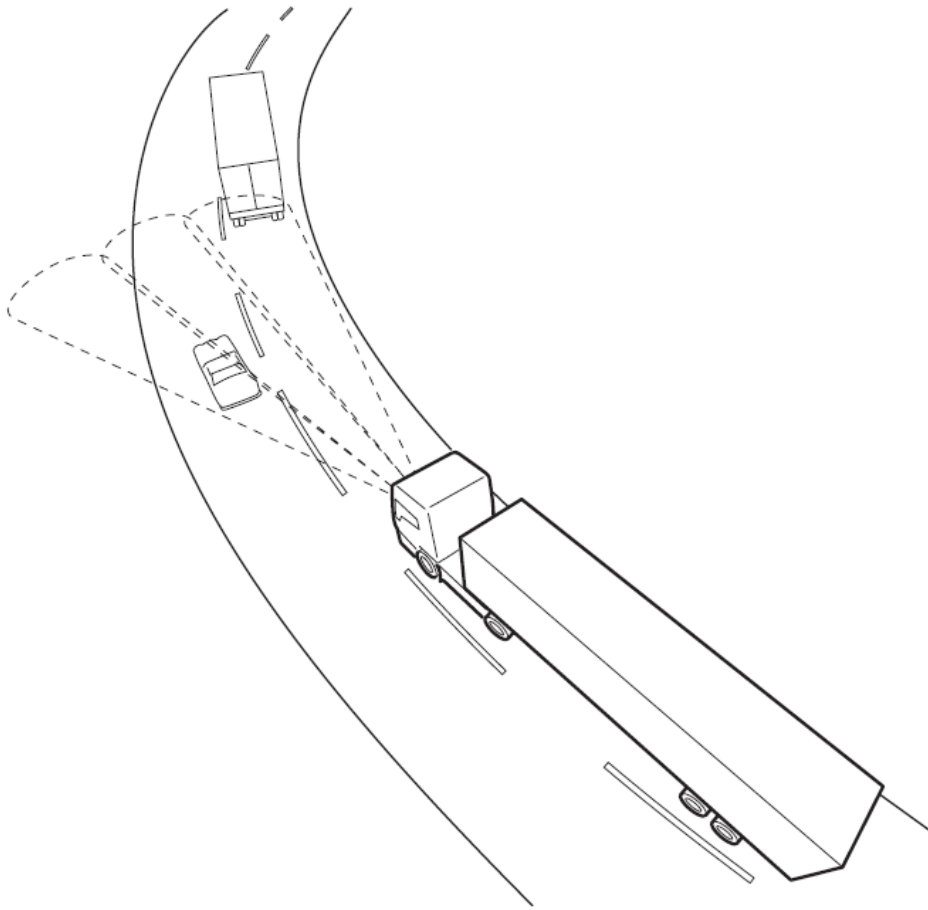
Location of the AEBS ECU



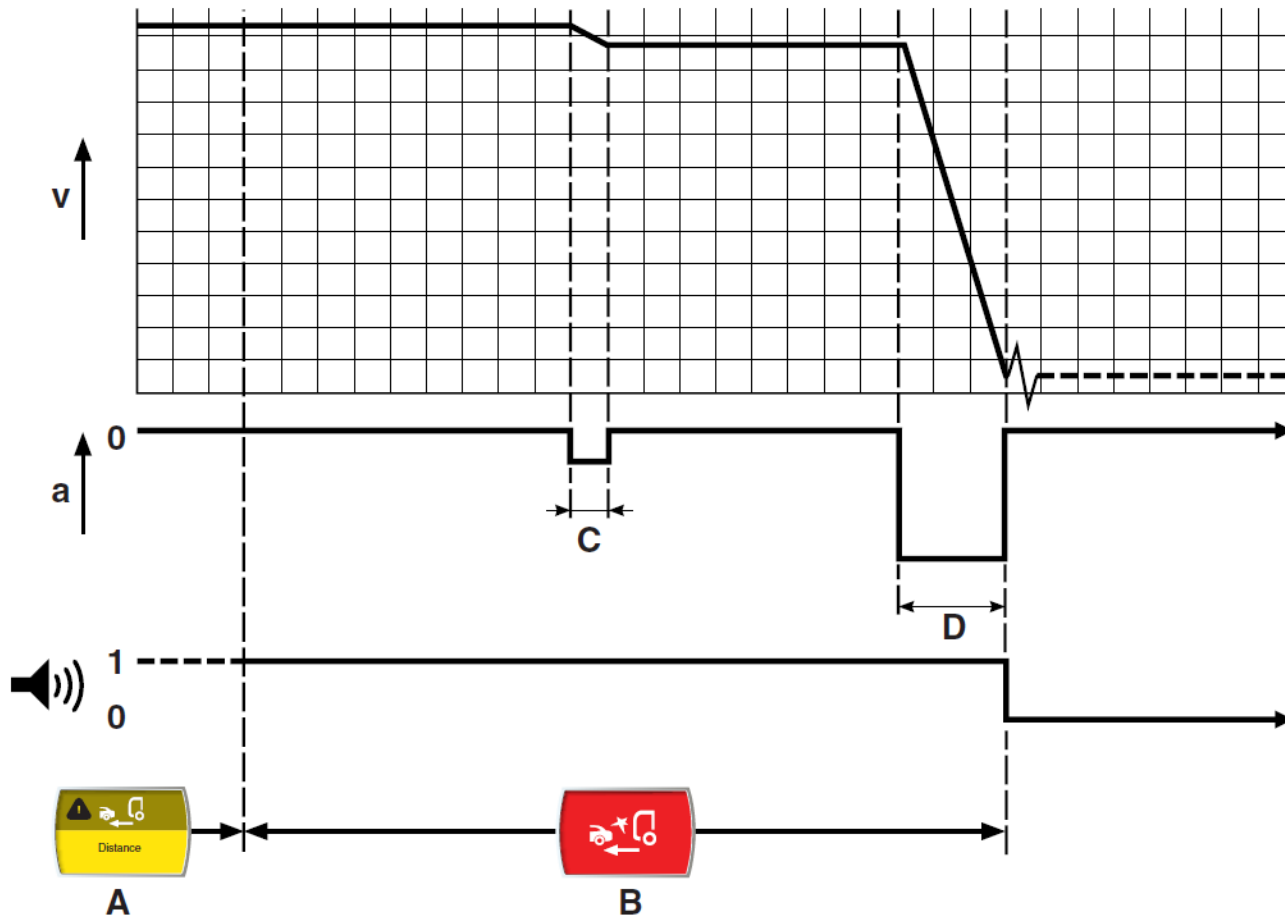
R601601.2



# FCW (FORWARD COLLISION WARNING) & AEB



# FUNCTION SEQUENCE



**v** – Vehicle Speed

**a** – Brake Application

**A** – ACC warning

**B** – Instrument panel warning

**C** – Haptic braking

**D** – Emergency braking







**DAF**

A close-up photograph of the front grille area of a blue DAF truck. The image shows a silver-colored panel with the 'DAF' logo embossed in a dark, metallic finish. The truck's body is painted a vibrant blue, and a portion of a honeycomb grille is visible at the bottom. The lighting is bright and even, highlighting the textures and contours of the vehicle's components.