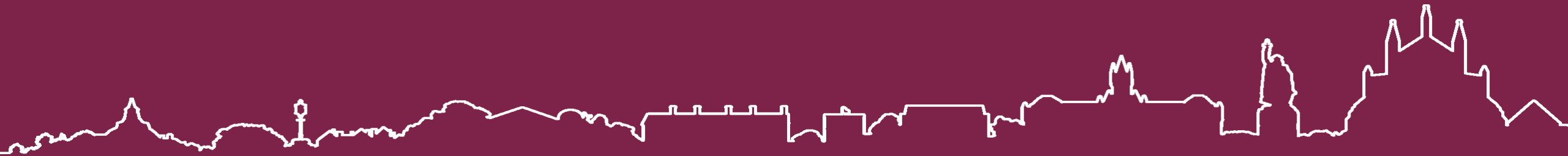


Climate Emergency: One Year On

10th June 2020

Dr Naomi Wise
Sustainability Officer
Winchester City Council



Winchester
City Council

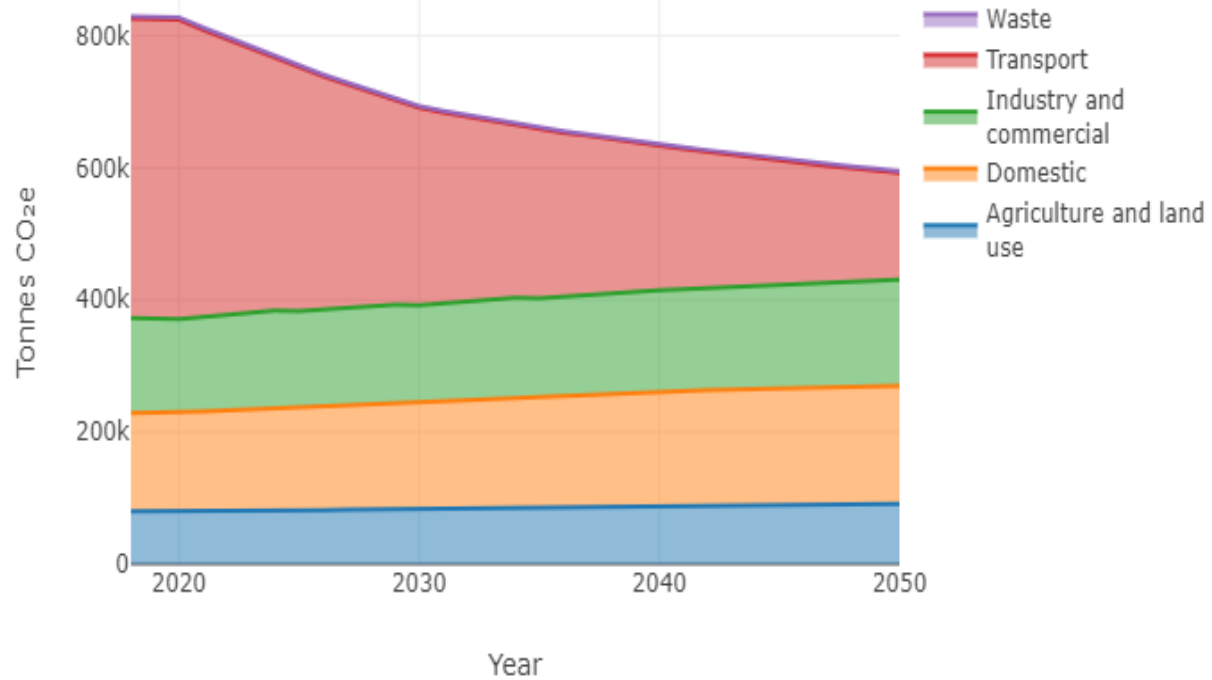
The Declaration 7th June 2019:

- *“The council will be aiming to make itself carbon neutral by 2024 and achieve the same with the wider district by 2030.” “The council will be aiming to make itself carbon neutral by 2024 and achieve the same with the wider district by 2030.”*

Target Year	2024	2030
Region	Council	District
2019 tCO ₂ e	4,200	834,000

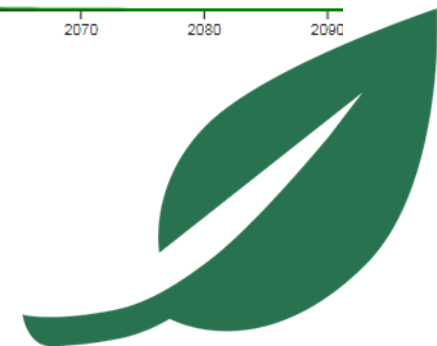
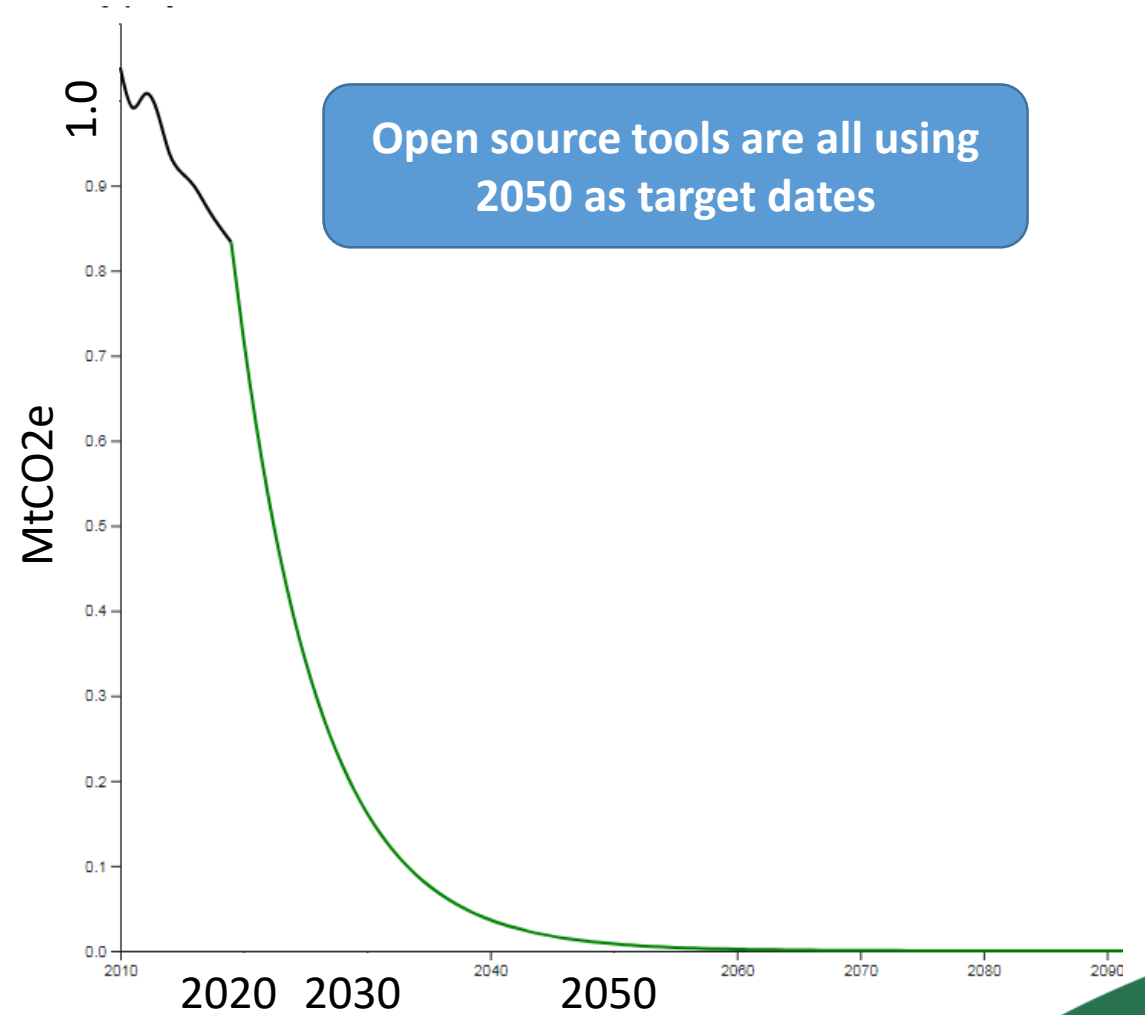


SCATTER Cities



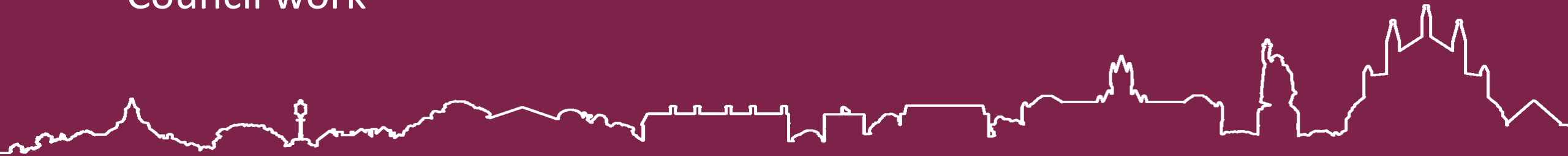
Projected emissions for Winchester District from SCATTER Cities without Climate Emergency interventions

Tyndall Centre



Developing the Carbon Neutral Action Plan

- Engagement events with key stakeholders
 - University, action groups, businesses
 - Internal engagement with officers
 - Public engagement – surveying the District
- A number of actions were already being pursued e.g.
 - Roof-top solar
 - EV charging network
 - Energy efficiency works
- Overarching aim to embed the carbon neutral agenda into all lines of Council work



Priority Areas



TRANSPORT

1,500 tonnes CO₂e through council operations and 287,000 tonnes CO₂e district emissions.

- Deliver key studies in 2020 to take forward the City of Winchester Movement Strategy which have a focus on achieving carbon emission reduction:
 - Walking & Cycling Strategy
 - Freight Strategy
 - Parking & Access Strategy
- Develop an expanded network of EV charging points across the district – starting with up to 46 points on the council's own estate by 2024, adding to existing provision and working with partners to identify where more are needed;
- Develop additional Park & Ride facilities to increase capacity starting with the Vaultex site with at least 130 new car park spaces in 2020.



PROPERTY/HOUSING

420 tonnes CO₂e through council operations and 193,000 tonnes CO₂e district emissions overall.

- To develop a council led pilot Passivehaus housing scheme in Micheldever by 2021;
- To invest an additional £1m per annum on energy and water efficiency measures to council housing stock;
- To bring forward the Local Plan update with an emphasis on low carbon housing development by 2021.



ENERGY

1,780 tonnes CO₂e through council operations and 172,000 tonnes CO₂e district emissions overall.

- Source 100% of all electricity purchased by the council from renewable sources by 2021;
- Build or invest in large scale renewable generation project(s), e.g. solar farms, heat pumps, solar-battery car ports, anaerobic digester, wind farm.

Particular challenges

- WCC is not a transport authority, Hampshire is
- WCC is not the highways authority, Hampshire is
- WCC contracts out waste collection and processing to... Hampshire
- 50% of Winchester District is in the South Downs National Park's jurisdiction
- The Council's operations <1% of the District's emissions
- To be a carbon neutral District by 2030, need everyone to adopt the agenda
- Hampshire's aim for carbon neutrality 2050!

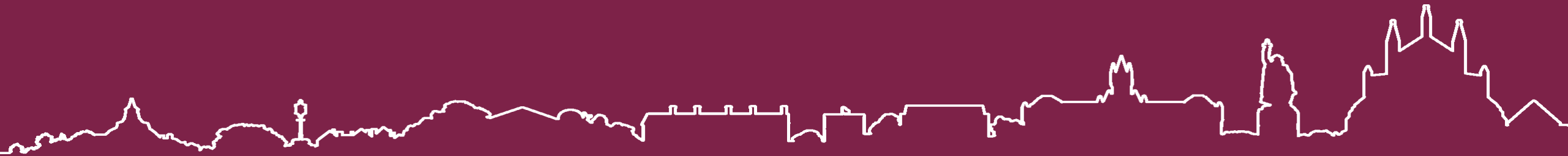


Monitoring

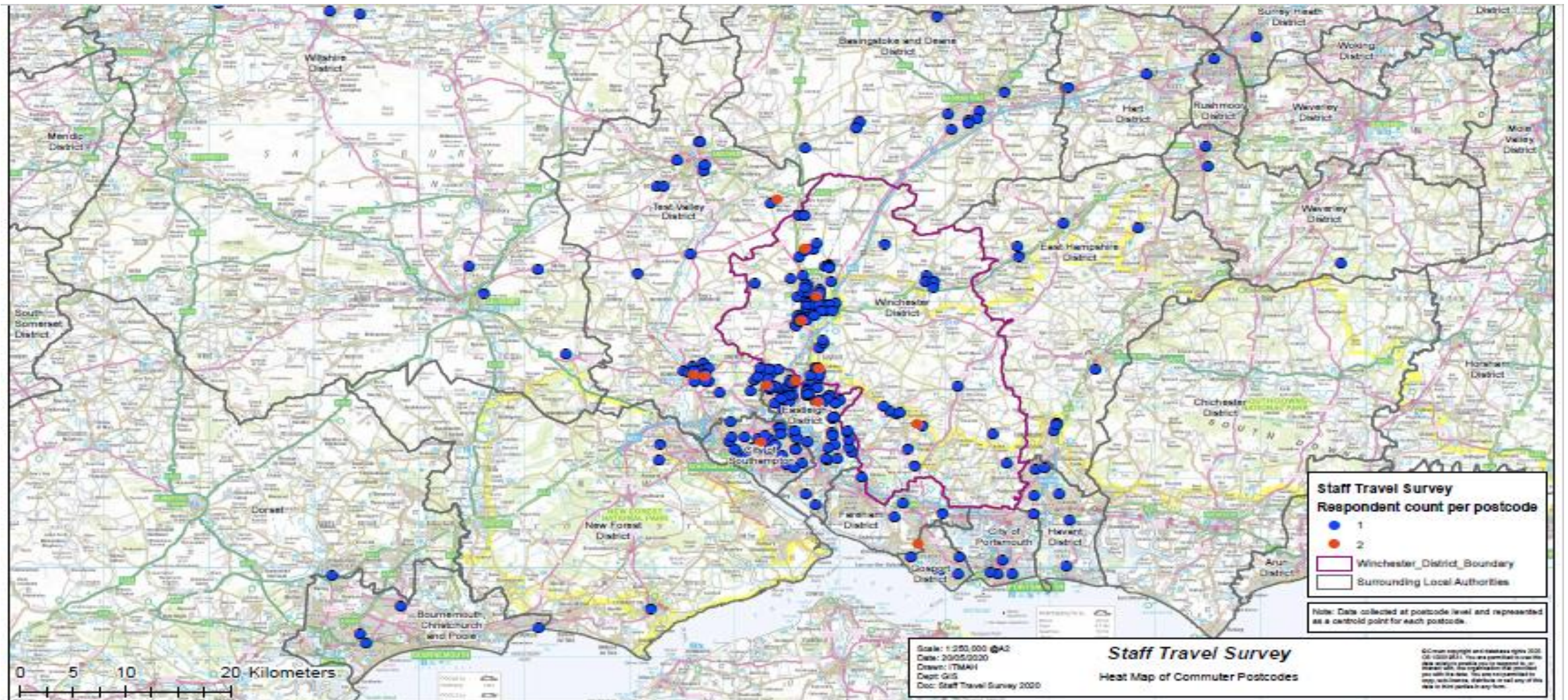
- Annual Council's carbon footprint externally prepared
 - Now including emissions from waste, staff travel and water
- Annual District emissions prepared by WinACC
 - from BEIS data, therefore 2 years in arrears
- Developing project ranking system; which projects will be the most effective (WIP)
 - Carbon reduction, project cost, district/council, relevance to council plan
- Using project management tool Wrike to detail all projects, milestones and carbon impact (WIP)



Projects from the Action Plan



Staff Commuting – 635 tCO2e addition



Trial electric P&R buses (10% CFP; 400t CO₂e/yr) / Refuse freighters (25% CFP; 1000tCO₂/yr)

- Need to install suitable charging infrastructure – expensive, can't just trial one bus/dust cart
 - Electric freighters not suitable for rural district
 - Working on an EOI with the M3 LEP for park & ride for grant
 - Hampshire transport authority; didn't apply for ELECTRIC BUS BID
 - COVID-19 causing public transport operators many troubles; not able to offer match funding to support grants
 - P&R buses operating at 15% capacity – for the foreseeable
 - WCC pays a contractor to operate P&R service; does not want to own the buses should WCC apply for grant; need an operator to lead
 - **Projects HELD**

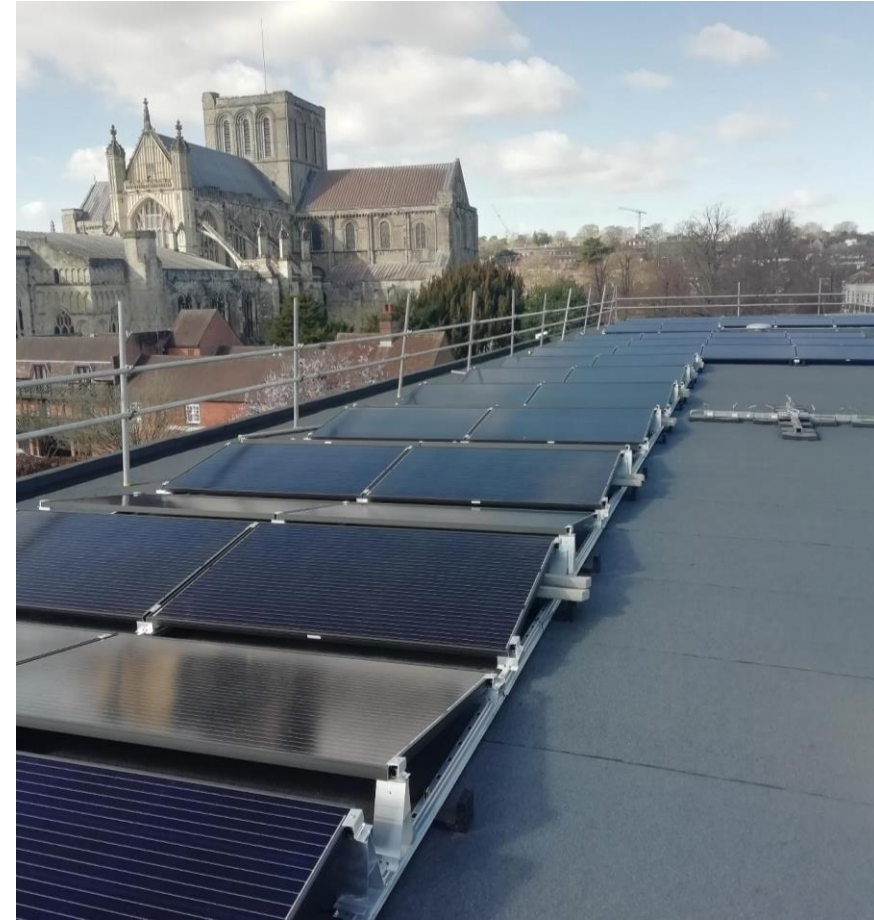


Solar PV (1000 tCO₂e/yr)

- 150kW at new leisure centre



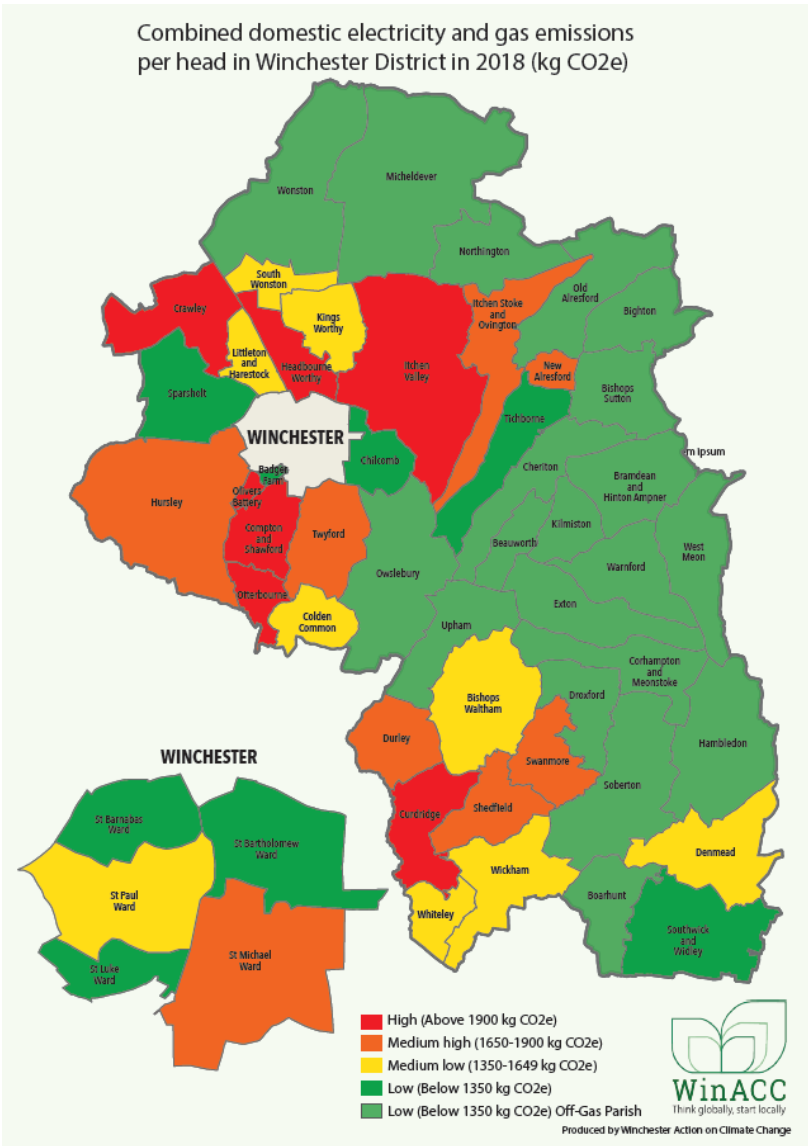
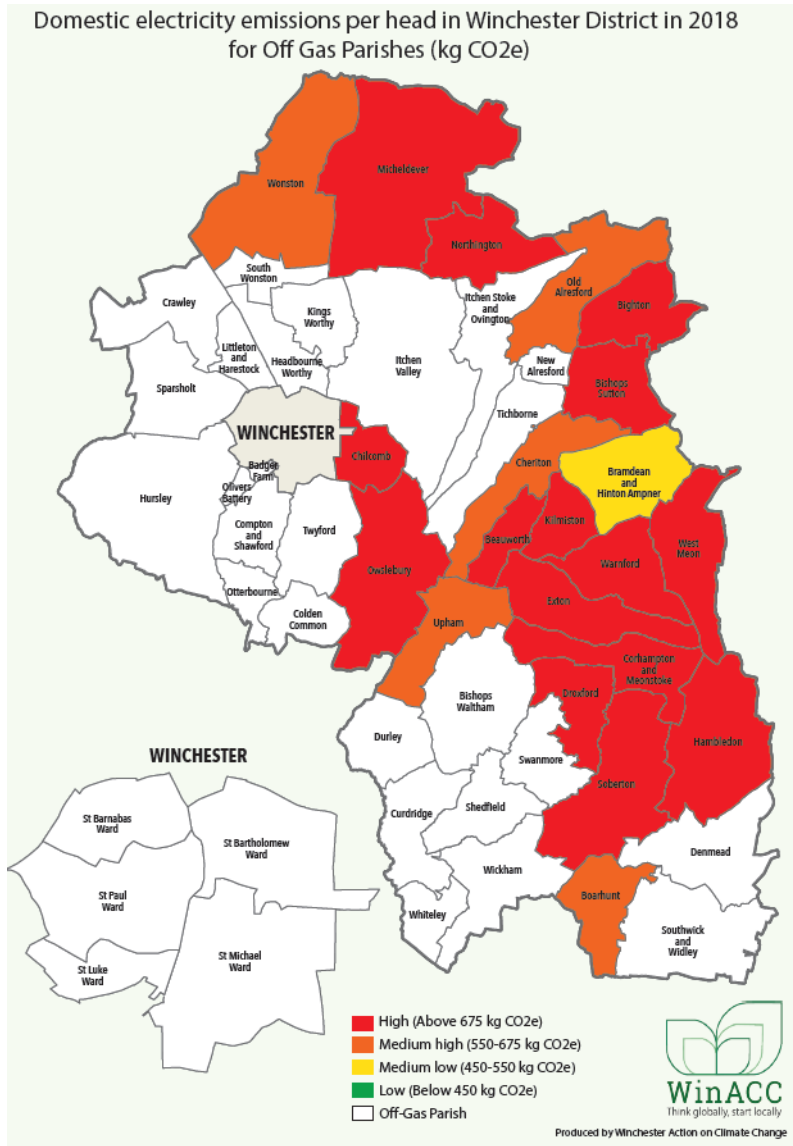
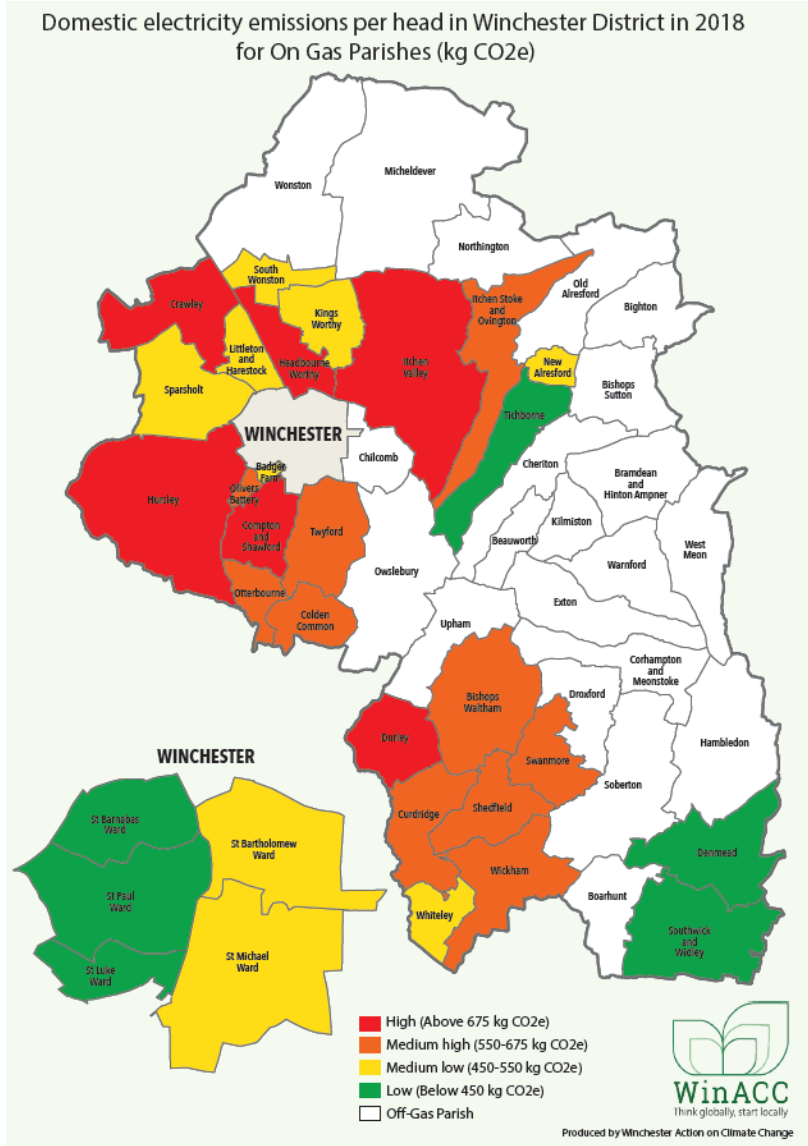
- Working on third party solar program - 750kW in pipeline
- Small solar farm 3MW



- 50kW at Civic Offices



Parish level emissions

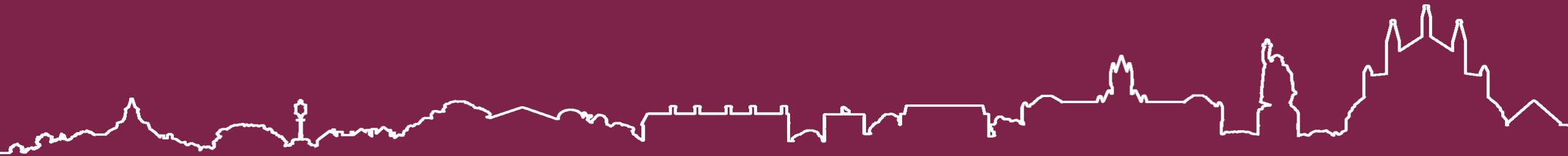


Future Local Plan - Policies

- Section 106 Carbon Lifecycle Assessment – Contribution to Offset Fund (735 tCO₂e/year)
- Carbon energy opportunity mapping (Red/Amber/Green)
- Introduction of higher energy performance standards over Building Regs.
- Increased water efficiency standards – (joint Water Cycle Strategy?)
- Sustainable architecture – embodied carbon
- Sympathetic approach towards energy efficiency in historic buildings
- Overheating
- Cycle lanes and bike storage
- Car parking standard/ P&R Facilities – COVID-19 implications?



Maintaining Enthusiasm?



Funding for voluntary organisations



Creating a greener district

Get up to £2,000 for your crowdfunder

Through the Greener Future fund “creating a greener district” we would like to support voluntary and not-for-profit groups and organisations in the district that can clearly demonstrate how their work helps achieve one or more of the funding themes: Transport, energy, properties and behavioural changes.

As an open competitive fund there will be a rolling deadline which closes when the full fund award has been pledged to applicants.

You can find out how to apply for this fund below.



Carbon reduction project suggestions

Carbon Emergency Initiative

Do you have an idea, initiative or potential project that can help Winchester City Council achieve its carbon neutrality targets? Please complete this simple form if; You are thinking of starting a project but you need help to delivery it, you want to tell us about a great initiative you have started in your community and want to share with others, you have an idea or project you want to tell us about or you are working on a project and need to inform us of a change. All project ideas will be registered and each applicant will receive an acknowledgement.

What is the nature of your application? *

Who are you? *

Next



Greening Campaign -

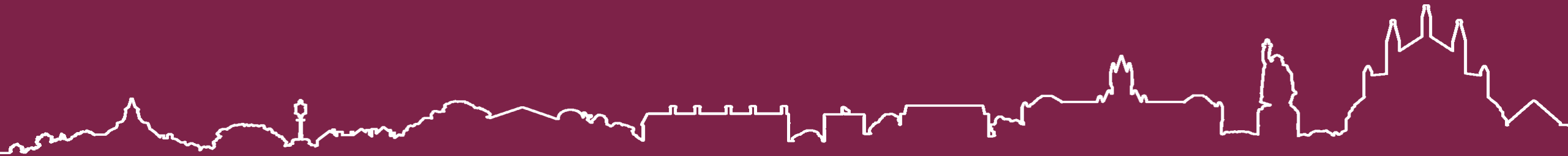


The Greening
Campaign

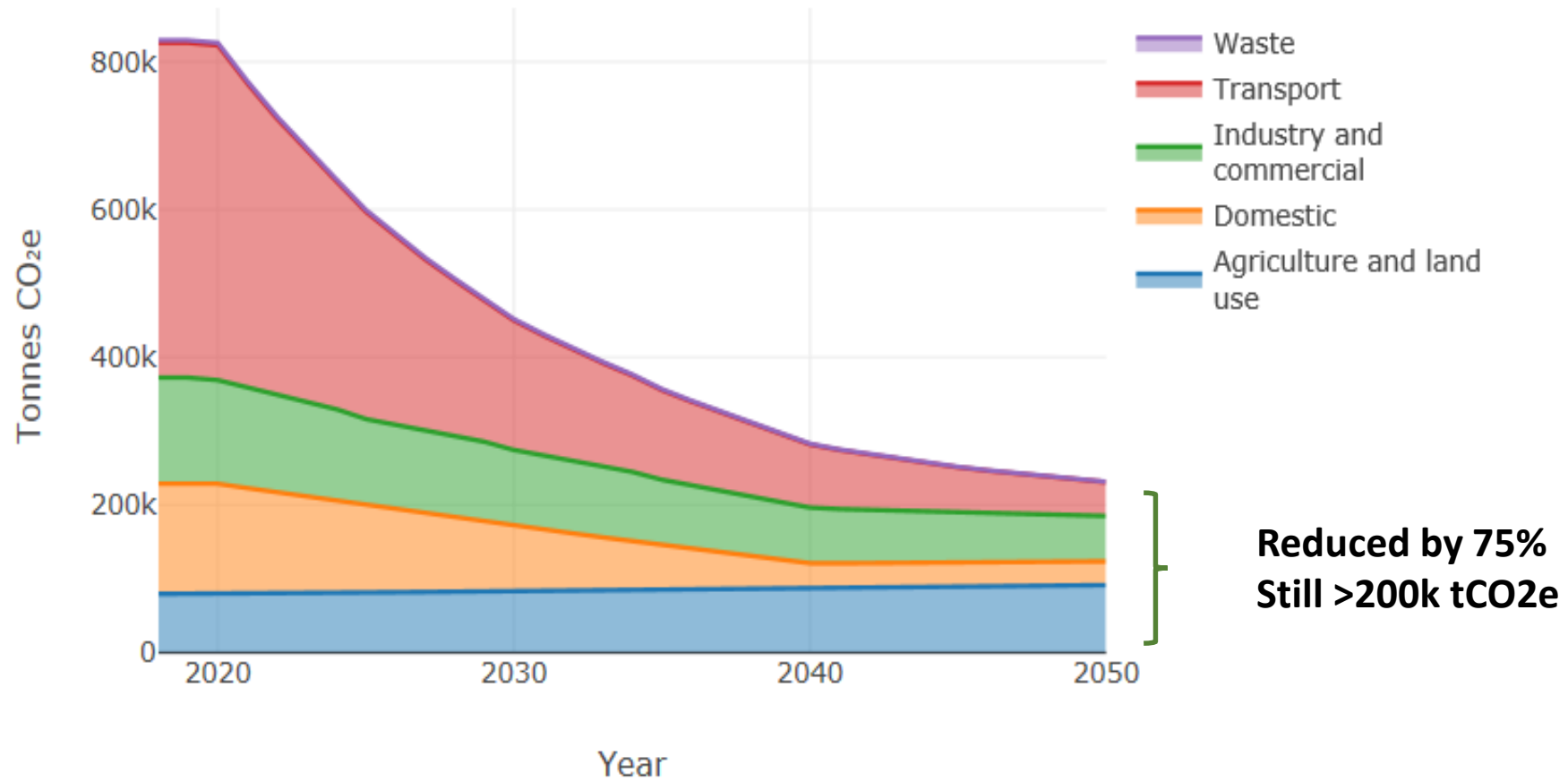


Greening the Country, Community by Community

Potential Pathway to Decarbonisation



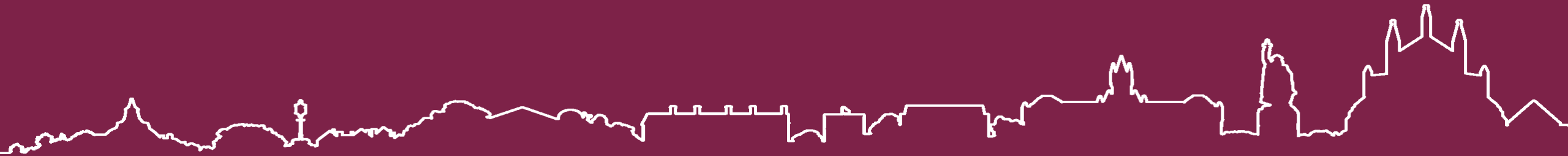
SCATTER Cities pathway to decarbonisation



Offsetting

Winchester Action Against Climate Change (WinACC) response to WCC's carbon neutral action plan:

“We are also disconcerted by the almost casual mention of using offsetting to reach carbon neutrality. There are many problems with offsetting. WinACC's view is that offsetting is not a cure for climate change; the only effective way to combat climate change is to directly reduce our emissions by changing how we live.”



[Our Campaigns](#)[Our Projects](#)[What can I do?](#)[About us](#)[News](#)[Blog](#)[Resources](#)[Contact us](#)[Donate](#)

TACKLING EMISSIONS FROM FLYING BY OFFERING A LOVE-MILES LEVY

[HOME](#) / [WHAT CAN I DO?](#) / [LOVE MILES](#) / [TACKLING EMISSIONS FROM FLYING BY OFFERING A LOVE-MILES LEVY](#)

What are love-miles?

In the modern world family and friends may be spread across the globe and it is only natural that we wish to visit them occasionally leading us to fly love-miles. But aviation causes around 2.5% of global emissions today so flying presents many of us with a huge ethical dilemma. Long-haul planes emit carbon dioxide and other gases at high altitude where they have an impact on global warming that is two to three times greater than the carbon dioxide alone.

So what should I do?

Clearly we should limit the number of flights taken, especially for holidays and business.

One way to approach this problem is to buy carbon offsets that are used to support projects, often in developing countries, that absorb carbon or reduce carbon emissions. Such projects can only be run by large organisations and are hard for individual flyers to monitor.

But help is at hand. WinACC's Love-Miles Levy is a simple scheme that allows flyers to pay a levy in proportion to the duration of their flight. These funds will be used by WinACC to support community and household projects in the Winchester area. Each project will have an annual report accessible online.

We are starting off small with just one local project such as planting fruit trees in schools and care homes. If you are interested in receiving trees [click here](#).

LATEST NEWS/BLOGS

[A Green Transport Revolution](#)[Life post-lockdown](#)[Checking lightbulbs](#)[Checking fridges and freezers](#)[Checking your roof insulation](#)

Top tips to
reduce your
carbon footprint

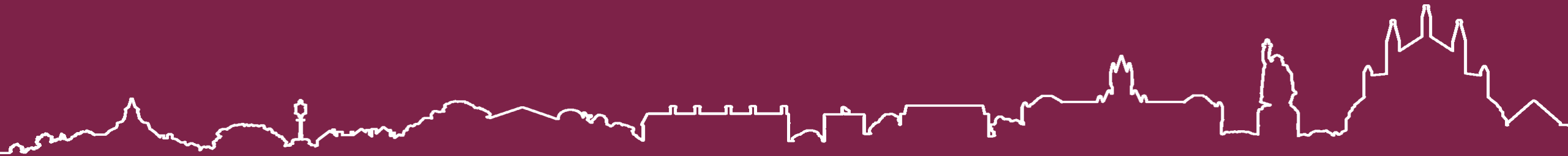


Questions

sustainability@winchester.gov.uk

Climate Emergency Action Plan:

<https://www.winchester.gov.uk/climate-change-and-energy/climate-emergency-what-we-are-doing-now/carbon-neutrality-action-plan>



Winchester
City Council