

A photograph of the Southampton City Council building, a large, light-colored stone structure with a prominent clock tower and a large arched window. The building is set against a clear sky, with green grass in the foreground and some trees on the left. A sign for 'SOUTHAMPTON CITY COUNCIL' is visible on the right side of the building.

**APSE Seminar, Transformation**  
**Appraising and delivering an in-house model**  
**of service delivery**

Mark Bradbury, Associate Director -Capital Assets

A city of opportunity where everyone thrives



A man and a woman are walking in a city square. The man is wearing a red and white plaid shirt, and the woman is wearing a red top. They are looking towards the right. In the background, there is a large stone tower with a crenellated top, likely a city gate or castle. There are other people walking in the square, and a blue car is visible on the left. The scene is bright and sunny.

New Priorities = New Structure and Operating Model

From Estate Management to Asset Management

Commercial & Fleet of Foot

A city of opportunity where everyone thrives





CASA BRASIL

C O S M O

ZIZZI

BYRON

CAU

RED-DOG SALOON

ALL-BAR-ONE

COMING SOON jamies



# FRUIT & VEGETABLE MARKET QUARTER





---

# ROYAL PIER WATERFRONT

---

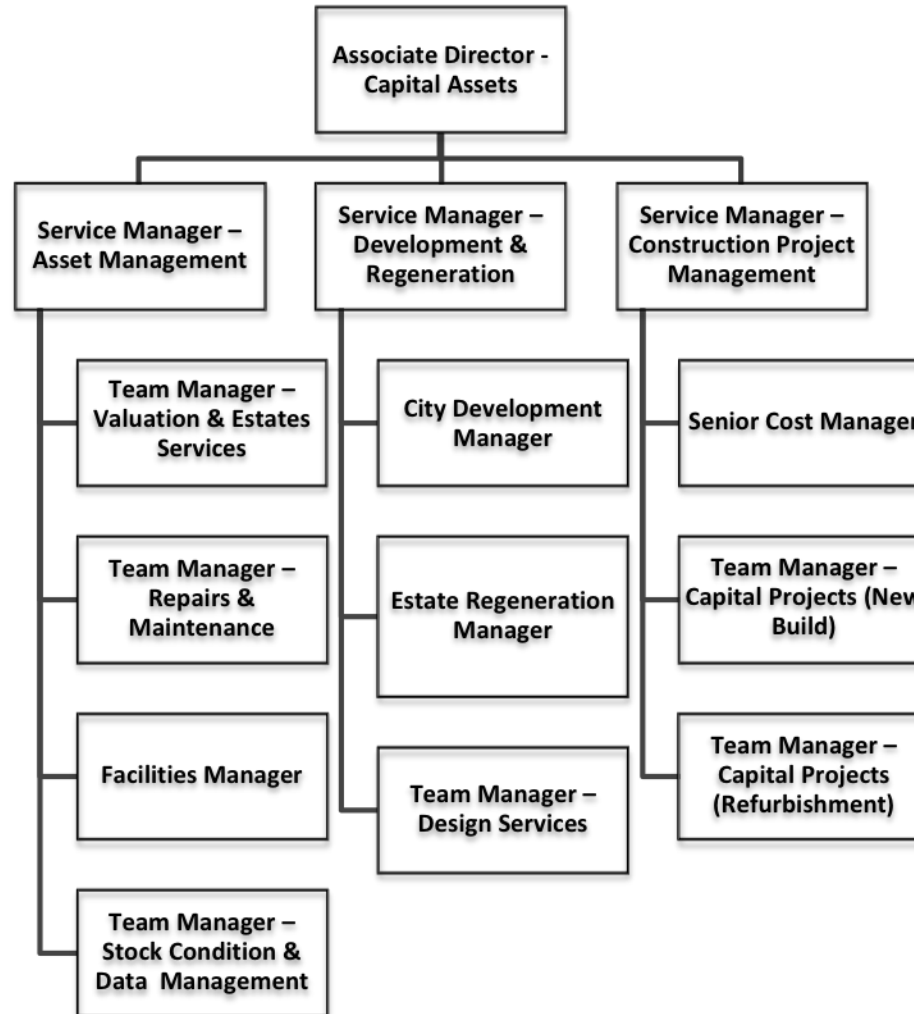






## The Right Skills with the Right Mindset

A city of opportunity where everyone thrives





# Mark Bradbury

## Associate Director - Capital Assets

[mark.bradbury@southampton.gov.uk](mailto:mark.bradbury@southampton.gov.uk)

