



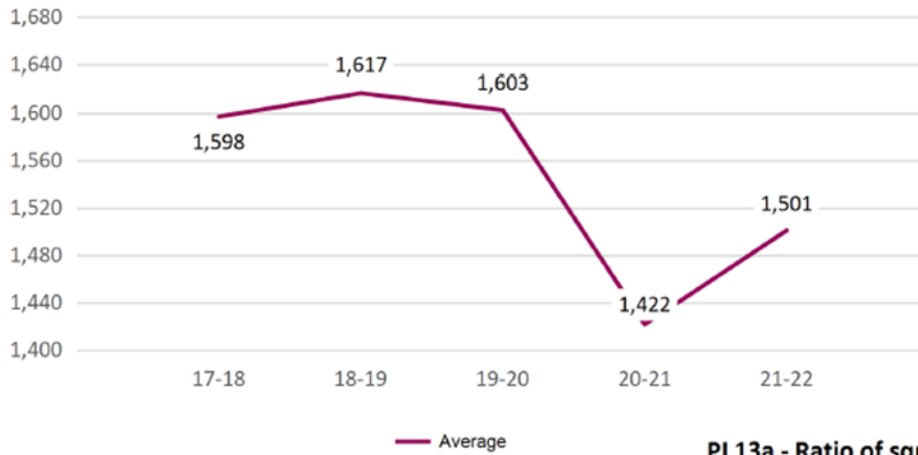
Building Cleaning Trend Analysis

Vickie Hacking, Principal Advisor, APSE

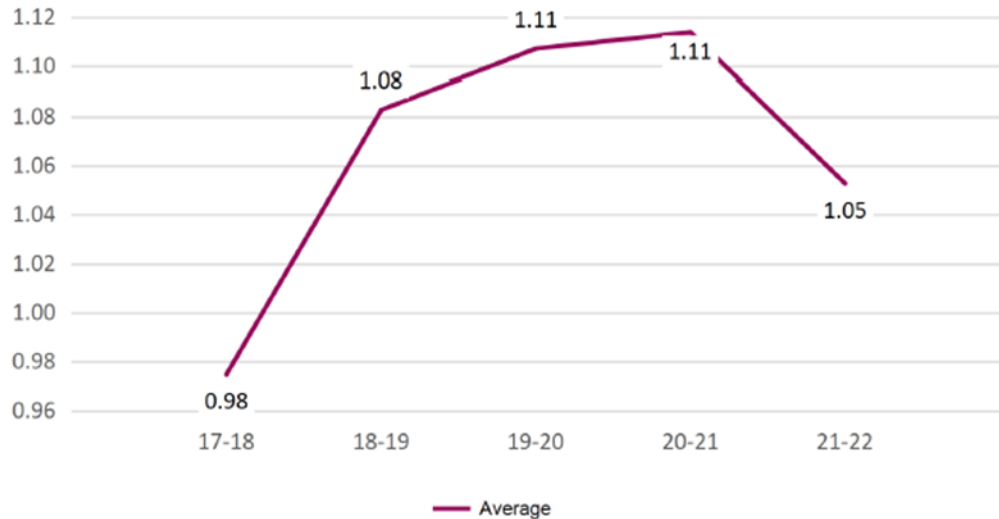
PI 01a - Cost per square metre for all areas cleaned (excluding CEC) (LA only)



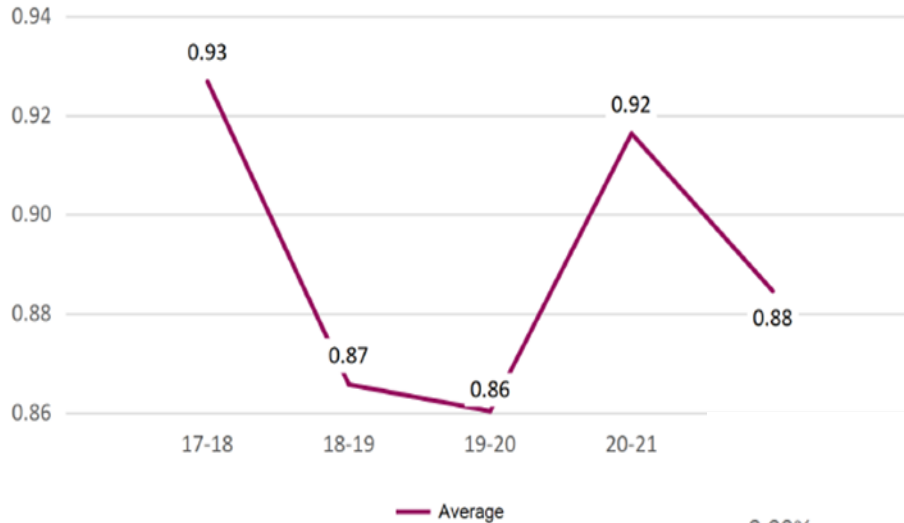
PI 16a - Total square metres cleaned per FTE employee (excluding outdoor areas) (LA only)



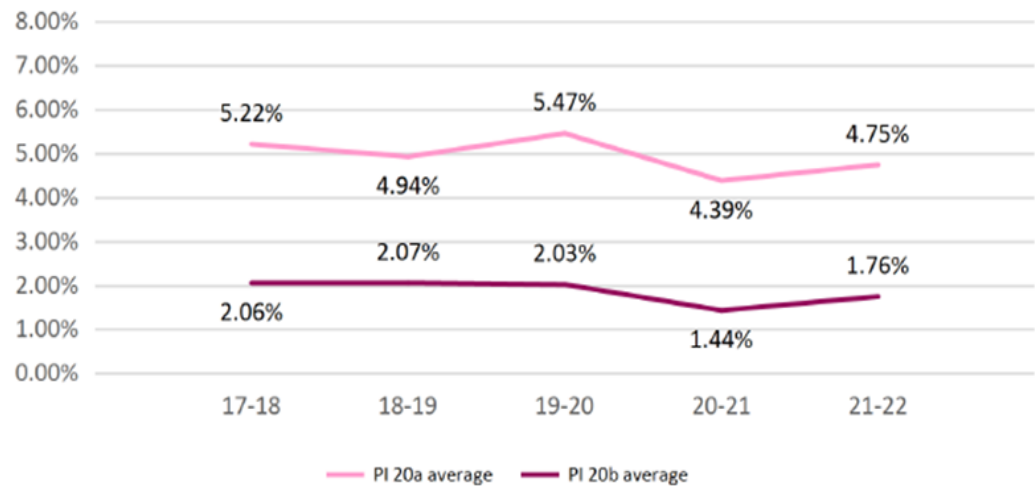
PI 13a - Ratio of square metres to annual scheduled hours (all offices) (LA only)



PI 23a - Ratio of square metres to annual scheduled hours (primary schools) (LA only)

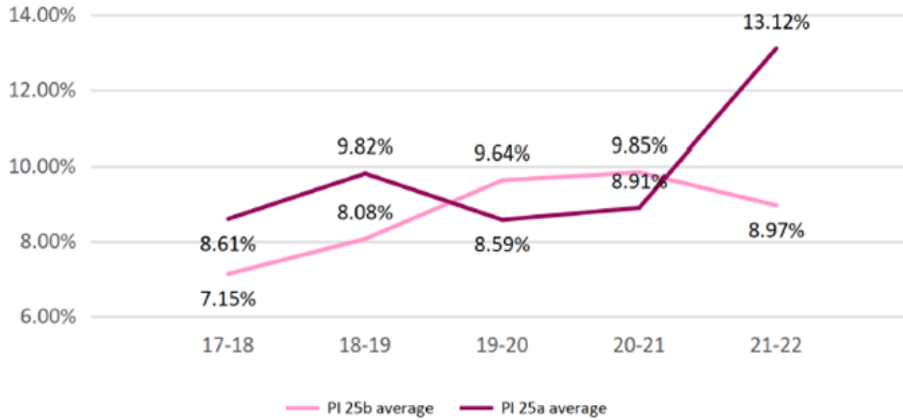


PI 20a - Staff absence (front line staff)
PI 20b - Staff absence excluding long term (front line staff)

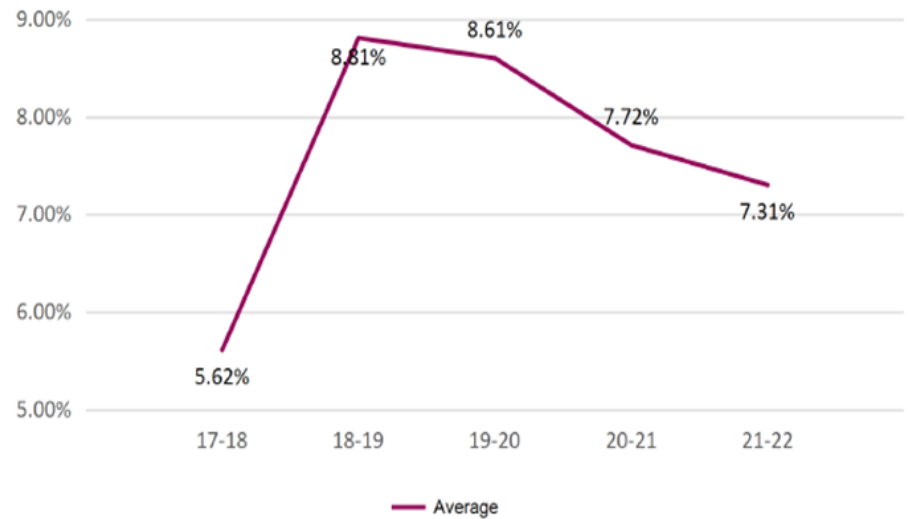




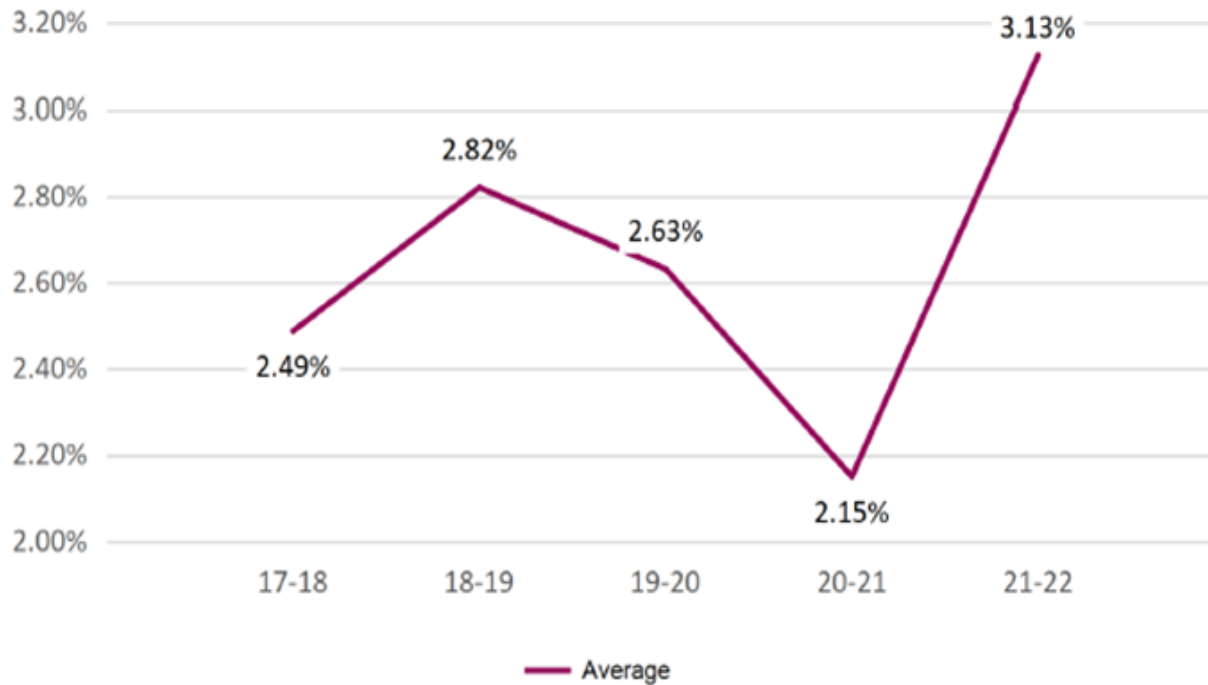
PI 25a - Leavers as a percentage of total operational staff
PI 25b - Leavers (employed for at least 12 weeks) as a percentage of total operational staff



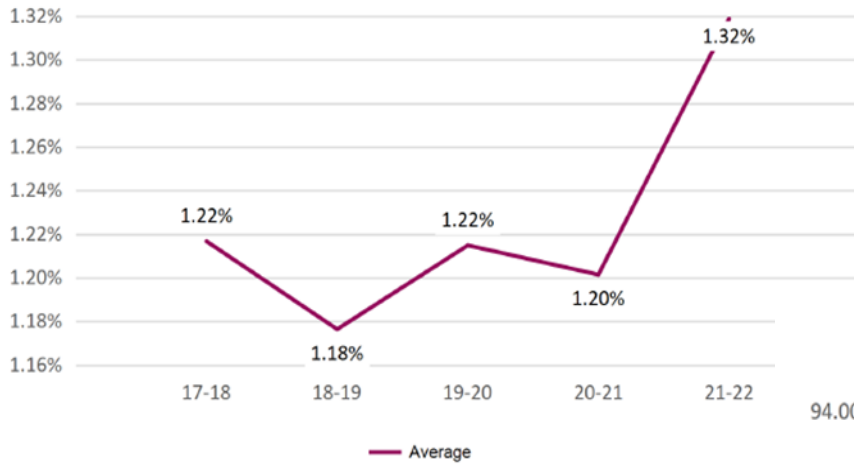
PI 21a Starters as a percentage of total operational staff



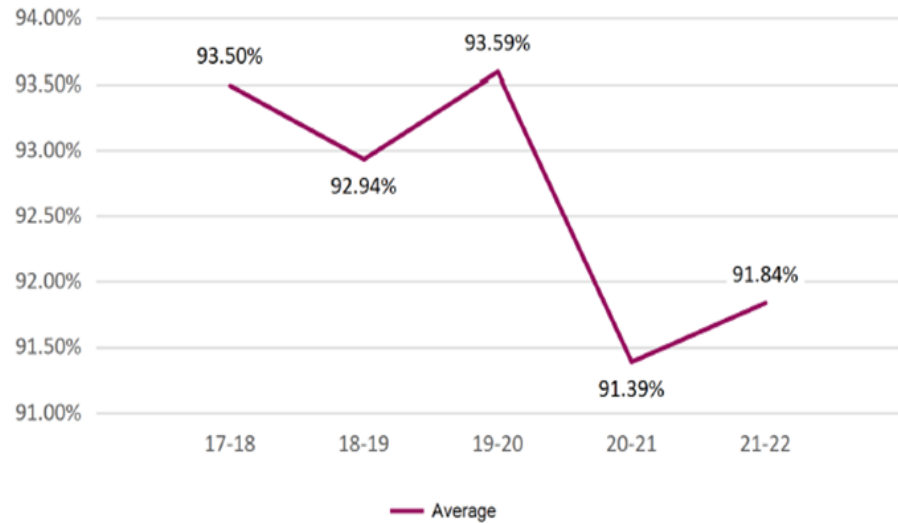
PI 06 - Cleaning materials cost as a percentage of total cost



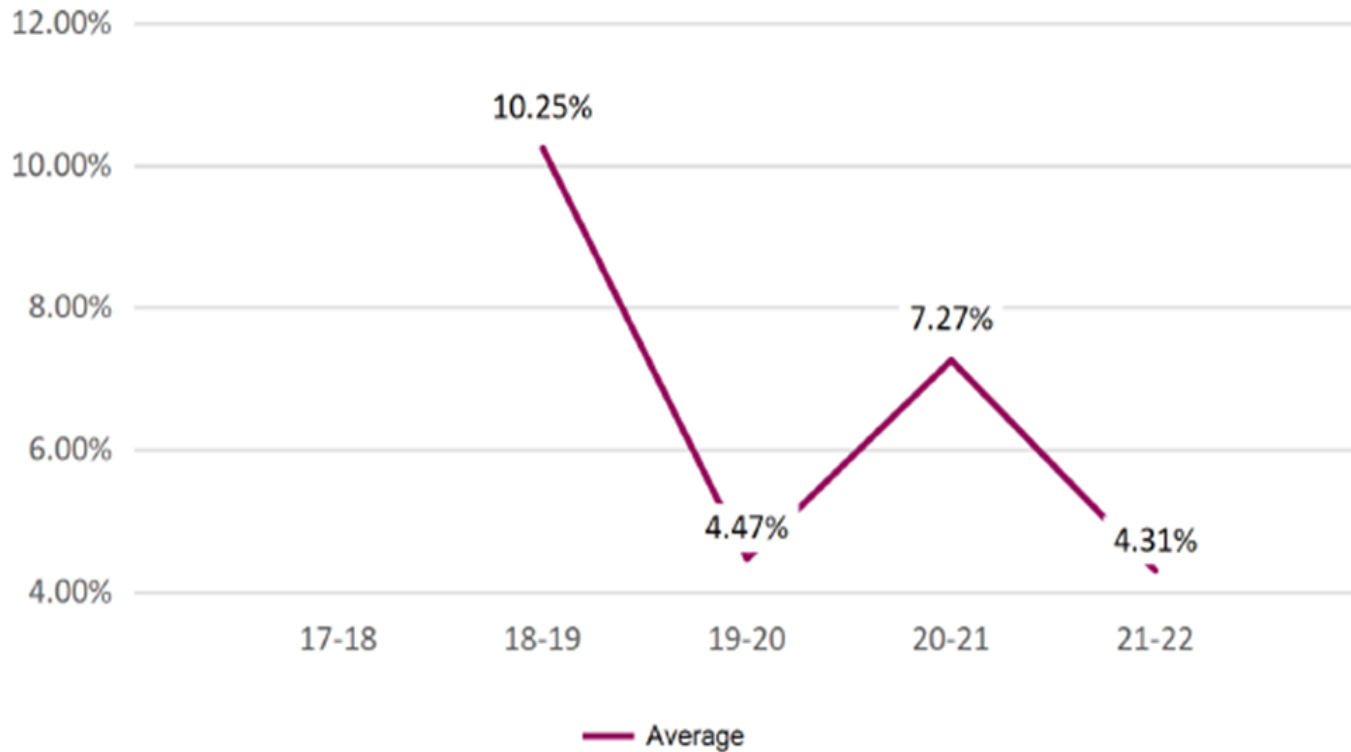
PI 07 - Cleaning equipment cost as a percentage of total cost



PI 05a - All staff costs as a percentage of total cost (All work)



PI 39a - Commercial work as a percentage of all work (turnover)





Contact details

Vickie Hacking, Principal Advisor

Email: vhacking@apse.org.uk