



GREATER CAMBRIDGE
SHARED WASTE

Developing Sites for Underground Refuse Systems

Trevor Nicoll

Head of Service, Greater Cambridge Shared Waste Service

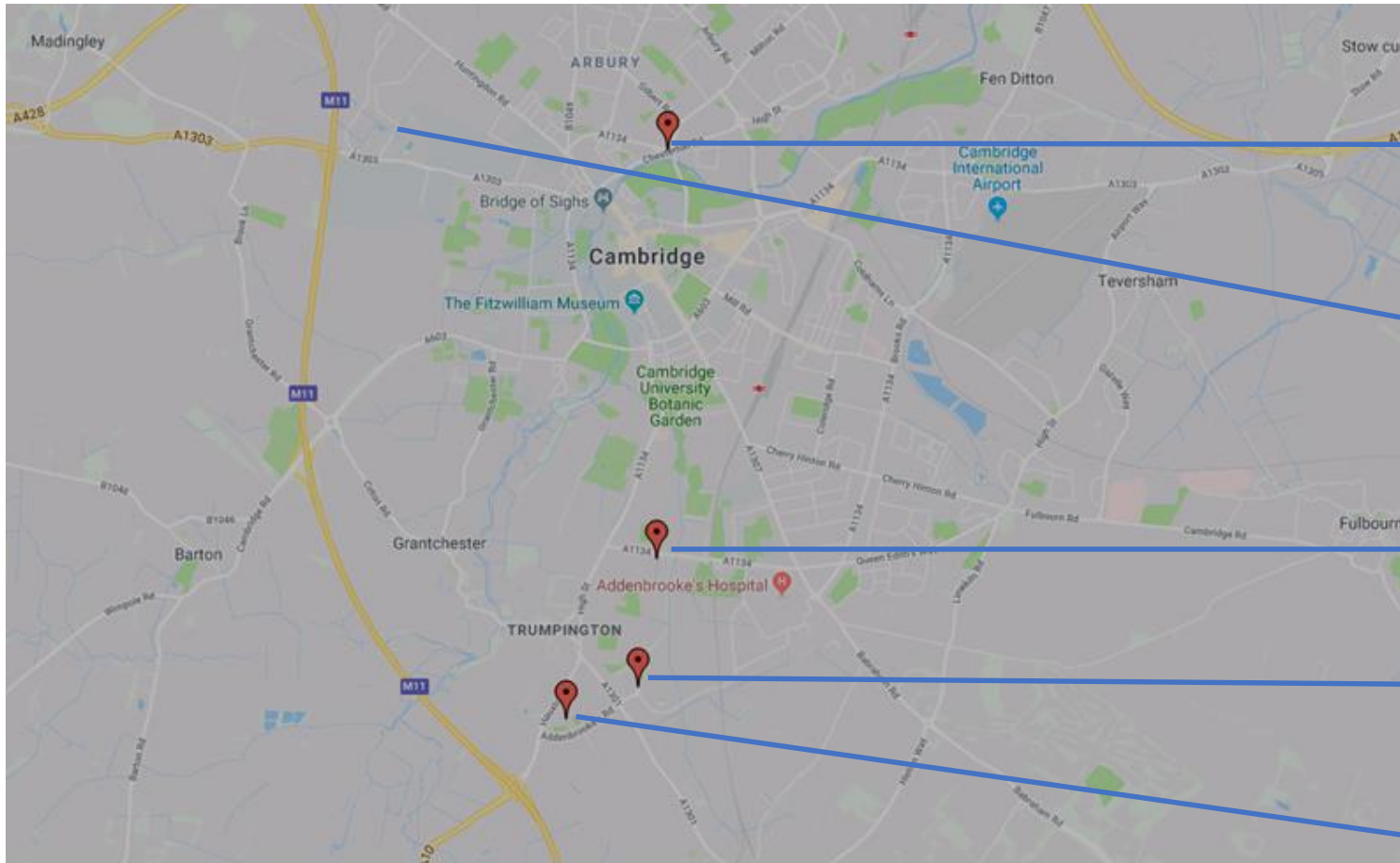


Considerations

- Assisted collections
- Maintenance and cleaning
- Street furniture/site layout/vehicle access
- Economies of scale
- Vehicle specification
- Type of development/type of collection
- Waste stream options/flexibility
- Food and Garden waste management



Underground recycling points



Chesterton Road
(Sulo/Plastic Omnium)

Northwest (Sotkon)

Aura (Contenur)

Abode (Contenur)

Glebe Farm
(ESE/PlasticOmnium)

Cambridgeshire recycling points





GREATER CAMBRIDGE
SHARED WASTE

Northwest Streetscape



Northwest Cambridge Masterplan



GREATER CAMBRIDGE
SHARED WASTE





GREATER CAMBRIDGE
SHARED WASTE

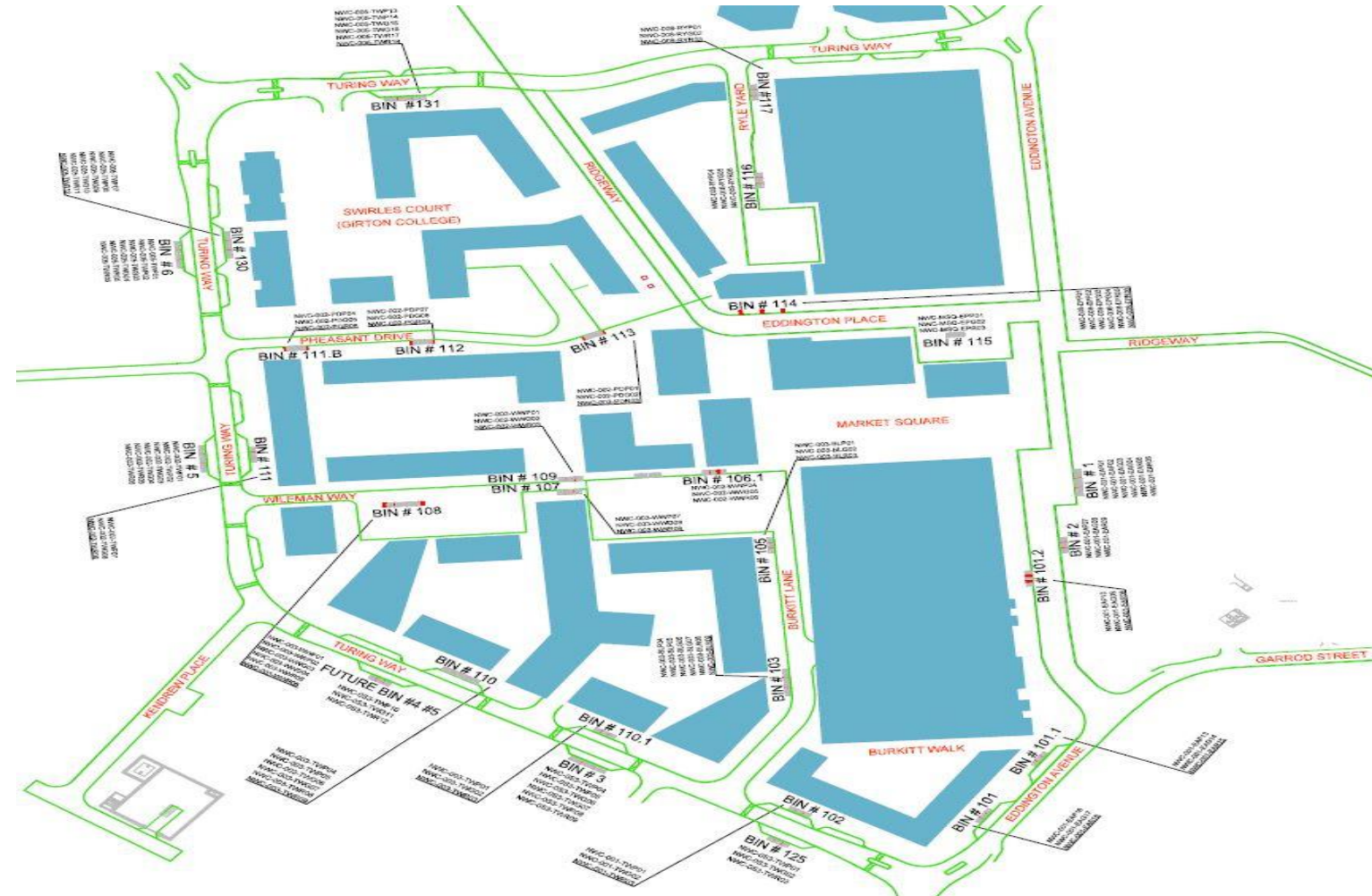
Build progress...





GREATER CAMBRIDGE
SHARED WASTE

Northwest street map



By 31 March 2018:

- 20 bin stores open
- 83 bins in operation
- Four waste streams
- 630 residents

Digging the trench

Concrete foundation

Unloading the bunkers

Laying the bunkers

Filling the spaces between the trench and the bunker with gravel

Positioning of the surrounding channel with drainage pipes

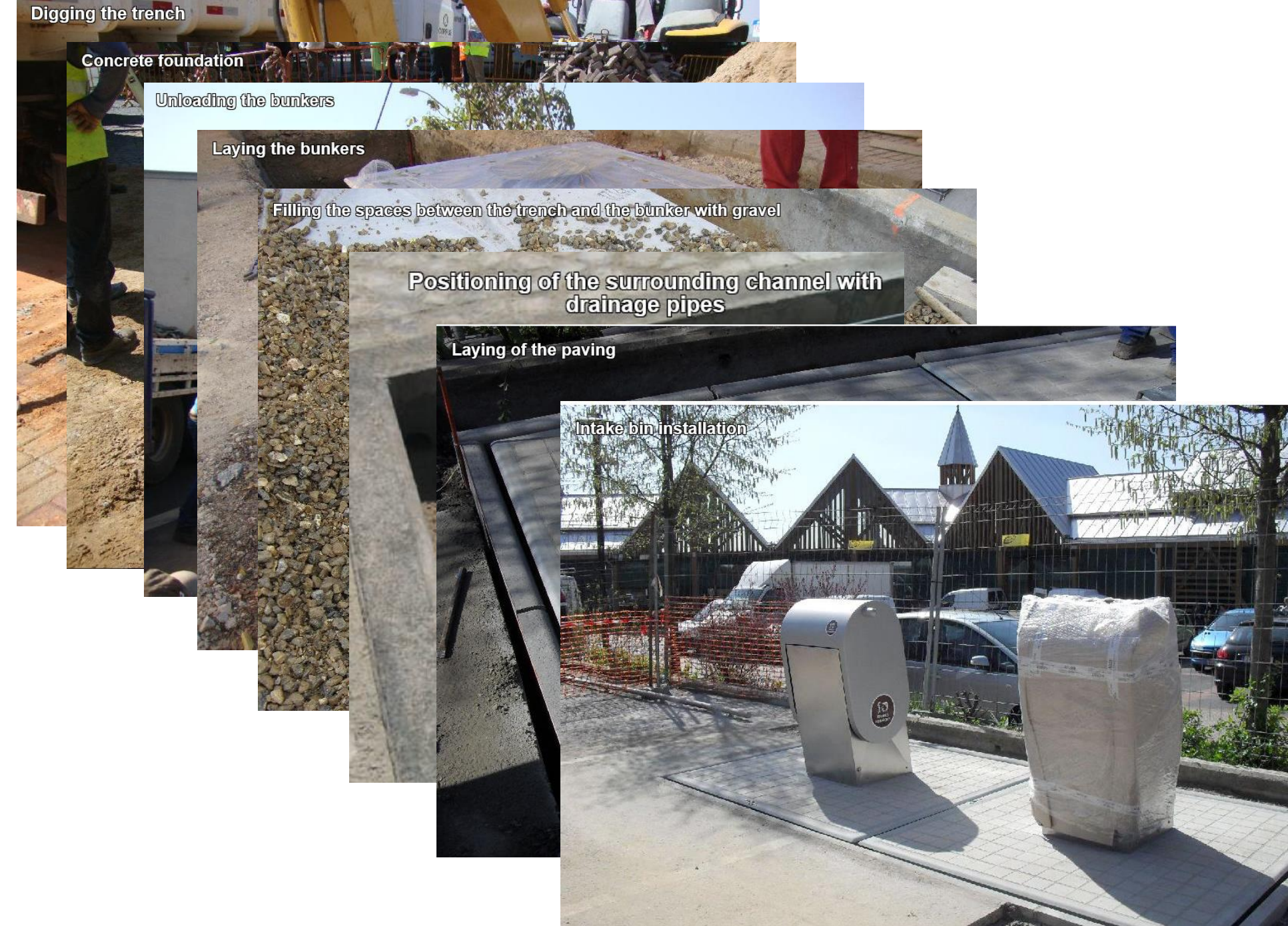
Laying of the paving

Intake bin installation



GREATER CAMBRIDGE
SHARED WASTE

Installation of system



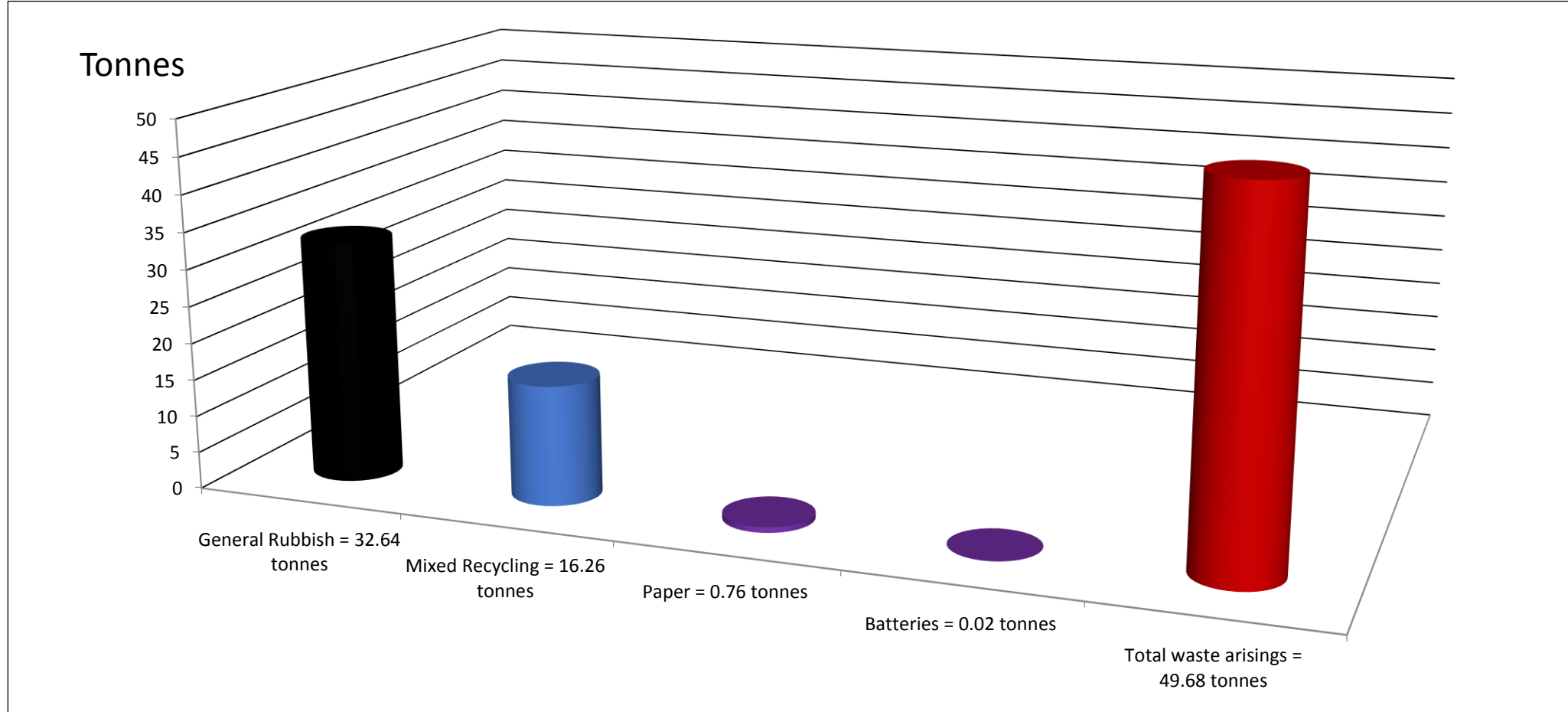
Underground V Overground

- Visual impact – clean streetscape
- Reduced fly tipping – no culture shift as new development
- Increased dry recycling rates – 34% compared with 22%
- Flexible collections and no missed bins
- Improved H&S – no manual handling
- Reduced staffing costs – 50% reduction
- Reduced collection costs – 10% reduction in time spent
- Reduced Developer costs – fewer bins = less storage space



GREATER CAMBRIDGE
SHARED WASTE

Northwest progress so far...

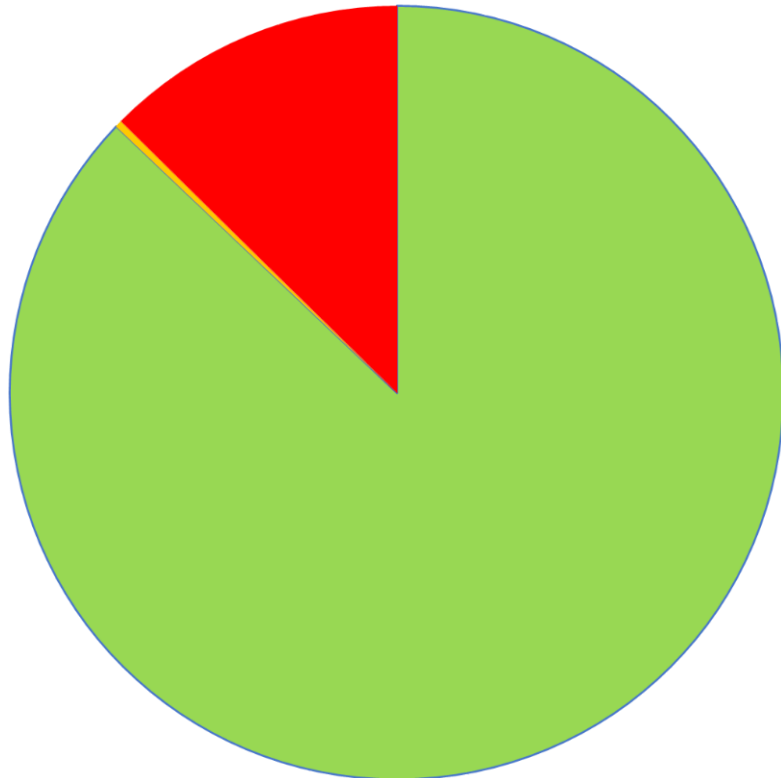




GREATER CAMBRIDGE
SHARED WASTE

Contamination levels at Northwest

Sampling breakdown



- Target material = 52,290kg
- Non target material = 190kg
- Non-recyclable material = 7,560kg
- Sample total = 60,040kg

The future ...



GREATER CAMBRIDGE
SHARED WASTE

Waterbeach Developments

