



# Developing action plans & strategies for decarbonisation

*Datblygu cynlluniau gweithredu a  
strategaethau ar gyfer datgarboneiddio*

November 14, 2019

14 Tachwedd, 2019

@WelshLGA

[www.wlga.wales](http://www.wlga.wales)

# Overview



CLILC • WLGA

## Defining plans

- Suitability
- Scope
- Structure



## Timelines for change

- Short, medium & long-term goals
- Alignment with national targets

## Practical support

- Funding
- Guidance

# Defining plans



CLILC • WLGA

## Suitability

- Context
- Aims
- Resources
- Data
- Support
- Collaboration

Action expresses  
priorities.

Mahatma Gandhi

# Defining plans



CLILC • WLGA

## Scope

- What (if anything) has been committed to?
- Consider....
  - Geographical area
  - Operational & organizational boundaries
  - Timeframe
- Impact areas
  - Transport
  - Buildings
  - Land use
  - Procurement
- Which emissions?
  - Other GHG or just CO<sub>2</sub>



# Defining plans



CLILC • WLGA

| Key Measures of Success               | 2016/17    | 2017/18    | 2018/19    | 2018/19 v 2017/18 |          |
|---------------------------------------|------------|------------|------------|-------------------|----------|
|                                       | Result     | Result     | Result     | Progress          | % change |
| <b>Non-Domestic Buildings</b>         |            |            |            |                   |          |
| Consumption (kWh)                     | 66,808,735 | 63,690,923 | 64,857,362 | Declined          | +1.8%    |
| Carbon emissions (tCO <sub>2</sub> e) | 18,923     | 16,258     | 14,822     | Improved          | -8.8%    |
| <b>Street Lighting</b>                |            |            |            |                   |          |
| Consumption (kWh)                     | 5,718,531  | 4,873,979  | 4,202,381  | Improved          | -13.8%   |
| Carbon emissions (tCO <sub>2</sub> e) | 2,569      | 1,874      | 1,291      | Improved          | -31.1%   |
| <b>Fleet Mileage</b>                  |            |            |            |                   |          |
| Mileage (miles)                       | 5,127,150  | 5,121,289  | 4,982,428  | Improved          | -2.7%    |
| Carbon emissions (tCO <sub>2</sub> e) | 3,790      | 3,852      | 3,856      | Declined          | +0.1%    |
| <b>Business Mileage</b>               |            |            |            |                   |          |
| Mileage (miles)                       | 4,186,640  | 3,948,586  | 3,846,615  | Improved          | -2.6%    |
| Carbon emissions (tCO <sub>2</sub> e) | 1,260      | 1,159      | 1,118      | Improved          | -3.5%    |
| <b>TOTAL</b>                          |            |            |            |                   |          |
| Consumption (kWh)                     | 72,527,266 | 68,564,902 | 69,059,743 | Declined          | +0.7%    |
| Mileage (miles)                       | 9,313,790  | 9,069,875  | 8,829,043  | Improved          | -2.9%    |
| Carbon emissions (tCO <sub>2</sub> e) | 26,542     | 23,143     | 21,087     | Improved          | -8.9%    |

|                                     |   |                                        |   |                            |
|-------------------------------------|---|----------------------------------------|---|----------------------------|
| <b>Carbon Footprint<br/>2018/19</b> | - | <b>Renewable Energy<br/>Generation</b> | = | <b>Net Zero<br/>Carbon</b> |
|-------------------------------------|---|----------------------------------------|---|----------------------------|

| Non-Domestic Buildings                | Wind Turbines | or        | Solar PV panels |           |
|---------------------------------------|---------------|-----------|-----------------|-----------|
| Carbon emissions (tCO <sub>2</sub> e) | 14,822        | 41        | or              | 175,450   |
| Street Lighting                       |               |           |                 |           |
| Carbon emissions (tCO <sub>2</sub> e) | 1,291         | 4         | or              | 15,282    |
| Fleet Mileage                         |               |           |                 |           |
| Carbon emissions (tCO <sub>2</sub> e) | 3,856         | 11        | or              | 45,644    |
| Business Mileage                      |               |           |                 |           |
| Carbon emissions (tCO <sub>2</sub> e) | 1,118         | 3         | or              | 13,234    |
| <b>TOTAL</b>                          |               |           |                 |           |
| Carbon emissions (tCO <sub>2</sub> e) | 21,087        | 59        | or              | 249,610   |
|                                       |               | ≡ 29.5 MW |                 | ≡ 62.4 MW |

Comparators:

# Defining plans



CLILC • WLGA

## Scope



### Developing a Welsh Public Sector Net Zero Carbon Reporting Guide

#### Principles, priorities and scope

##### *A discussion document*

The scale and rate of change implied in the target for the Welsh Public Sector to be carbon neutral by 2030 is significant. It is recognised that changing decision making, to adequately take account of carbon, requires a shift in public sector thinking. The detailed definition of scope and approach to monitoring progress against this ambition is crucial, to ensure that it is achievable but also stretching to reflect the right scale of ambition envisaged by those that are leading the efforts. Welsh Government is hosting a workshop on 16 October in Cardiff, for representatives from different parts of the Welsh public sector, to decide on the principles, priorities and scope for the Welsh Net Zero Reporting Guide. The workshop will be run as part of the project to develop the Reporting Guide and provide recommendations on the eventual reporting approach. The outputs from the workshop will be used as the basis for a draft guide which will then be peer-tested by some of the public sector bodies who have volunteered to take part in this process. It is expected that the final Reporting Guide will be published in Spring 2020.

This document is intended to initiate and support discussion at the workshop.

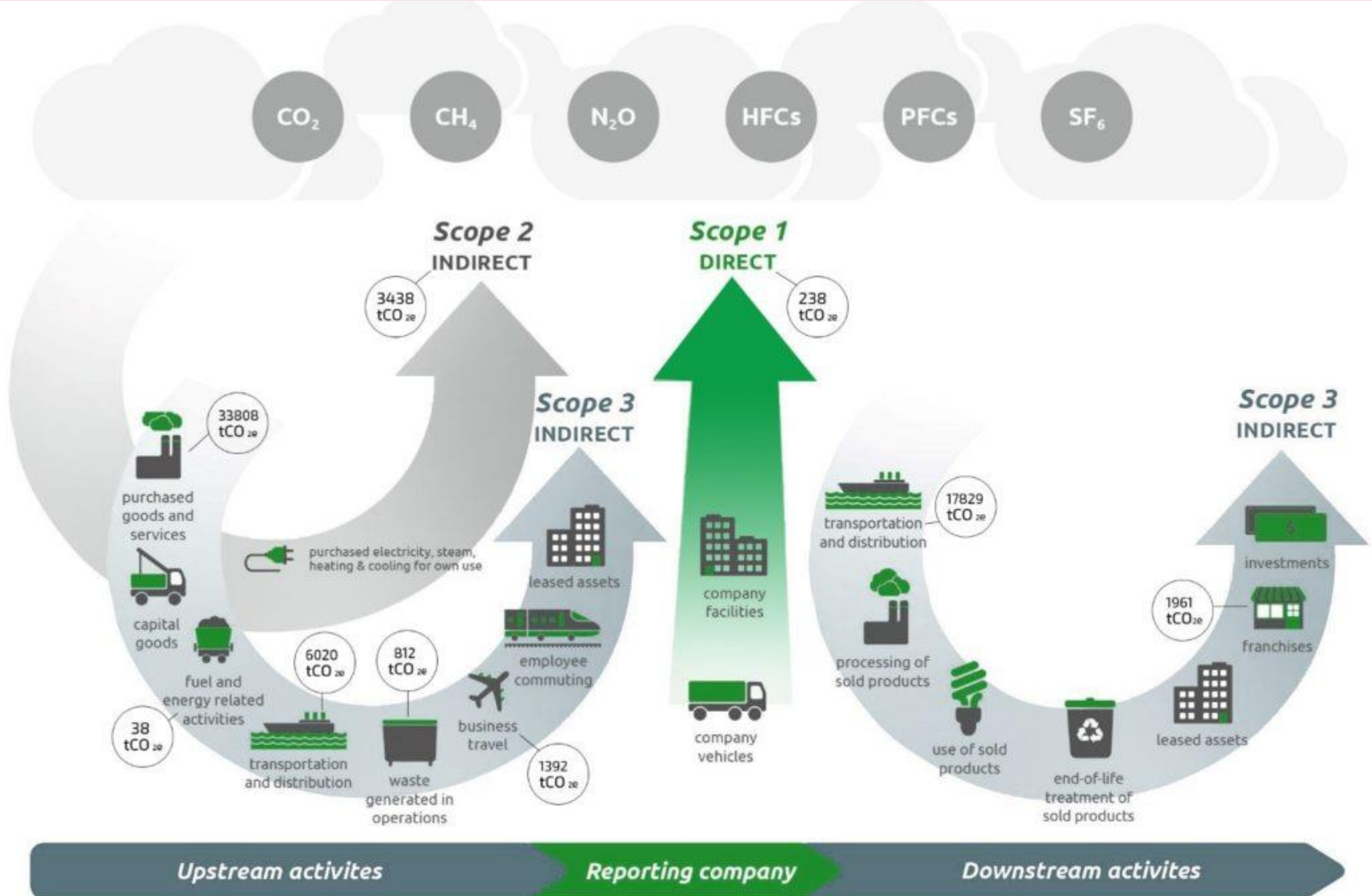
### Contents

|     |                                                                |    |
|-----|----------------------------------------------------------------|----|
| 1   | Section 1 – Principles and priorities for reporting.....       | 1  |
| 1.1 | Introduction .....                                             | 1  |
| 1.2 | Principles and priorities.....                                 | 2  |
| 2   | Section 2 - Scope of the reporting standard .....              | 6  |
| 2.1 | Introduction .....                                             | 6  |
| 2.2 | Setting an organisational boundary .....                       | 6  |
| 2.3 | Setting an operational boundary .....                          | 8  |
| 2.4 | Which GHG gases?.....                                          | 9  |
| 2.5 | Reporting frequency.....                                       | 10 |
| 2.6 | Type of year .....                                             | 10 |
|     | Appendix A: Breakdown of emission source categories .....      | 12 |
|     | Annex 1: Applying the Principles of MRV and Transparency ..... | 16 |

# Defining plans



CLILC • WLGA



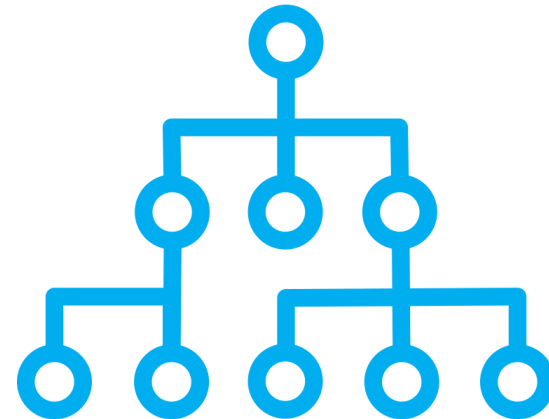
# Defining plans



CLILC • WLGA

## Structure

- Who's the audience?
- User friendly
- Commitment to review
- Targets
- Milestones





# Defining plans



CLILC • WLGA

## Structure

### Scene-setting

- Policy & organizational context
  - Low carbon Wales
  - UKG/WG/ Organisation targets
  - Notice of motion
- Outline of approach
  - Priorities
  - Method – pathway to success
  - Success criteria
  - Roles and responsibilities

### Existing actions

- What's being done and by whom
- Results/ evidence base for action

### Future actions

- Short
- Medium
- Long-term

### Measuring & reporting

- Scope 1
- Scope 2
- Scope 3
- Investment
- Other KPIs
- Review

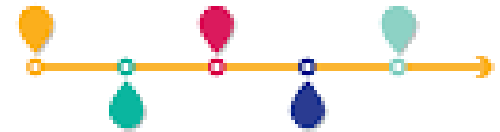
# Timelines for change



CLILC • WLGA

## Short-term

- Stock take—What is currently being done?
- Low-hanging fruit
- Cost-benefit analysis



## Medium-term

- Perhaps aligned with funding settlements and business planning
- Alignment with LDPs, PSB wellbeing plans, corporate plans

## Long-term

- 2030 public sector target
- UK Government 2050 target

# Practical support



CLILC • WLGA

## Funding

- The Development Bank of Wales
- The Wales Funding Programme
- The Public Works Loans Board
- Internal funds
- Other



## Guidance & support

- WG Energy Service
- Ashden
  - [A toolkit for city regions and local authorities](#)
- Carbon Trust
  - [Local Authorities: Saving energy in Local Authority buildings](#)

# Practical support



CLILC • WLGA

**Any questions?**  
Unrhyw gwestianau?

# Contact



CLILC • WLGA

## **Ben Sears**

Environmental & Sustainability Support Officer

*Swyddog Cymorth Polisi Cynaliadwyedd a'r Amgylchedd*

[Ben.sears@wlga.gov.uk](mailto:Ben.sears@wlga.gov.uk)

Tel/ Ffôn : 07775 743561