

# **APSE Building and Housing Advisory Group**

**15 November 2017**

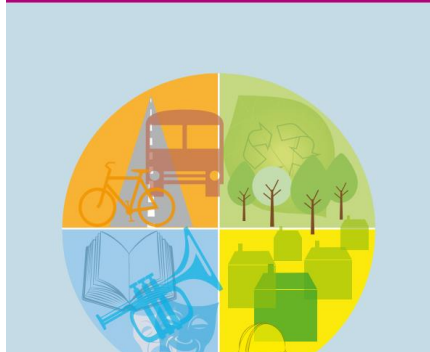
# Briefings

- 17-44 Local Authority Housing Companies
- 17-43 State of the Market 2017 – Sports and Leisure
- 17-42 State of the Market 2017 – Highways
- 17-41 State of the Market 2017 – Street Lighting
- 17-40 State of the Market 2017 – Winter Maintenance
- 17-39 The Clean Growth Strategy
- 17-38 Electric Vehicle Charging Infrastructure
- 17-37 Planning for the right homes in the right places
- 17-36 Bin Complaints – Local Government & Social Care Ombudsman
- 17-35 Electoral reform in local government in Wales - consultation
- 17-34 Air quality plan for nitrogen dioxide (NO<sub>2</sub>) in UK 2017

# Research

[www.apse.org.uk](http://www.apse.org.uk)

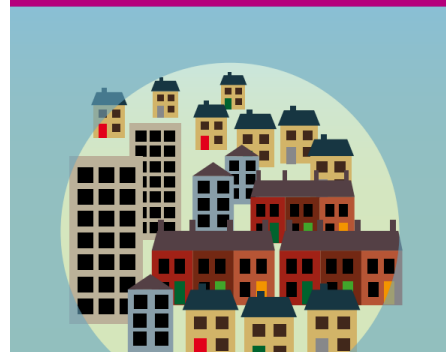
**Redefining neighbourhoods:**  
A future beyond austerity?



**Accountability and scrutiny**  
The issues for local government in a changing political environment



**Building homes, creating communities**  
Ensuring councils provide innovative solutions to meeting housing need



**DE MONTFORT UNIVERSITY LEICESTER**  
**E·S·R·C ECONOMIC & SOCIAL RESEARCH COUNCIL**

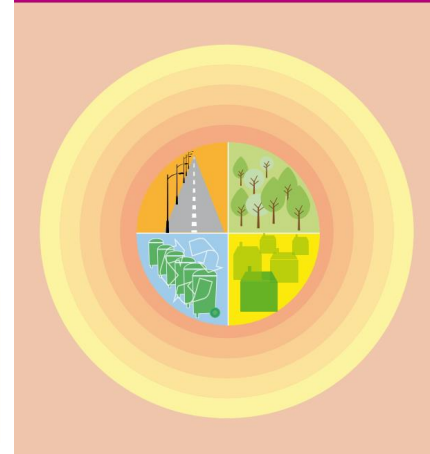
**GOVERNING IN AND AGAINST AUSTERITY: INTERNATIONAL LESSONS FROM EIGHT CITIES**

Professor Jonathan S. Davies  
Director - Centre for Urban Research on Austerity  
De Montfort University, Leicester, UK

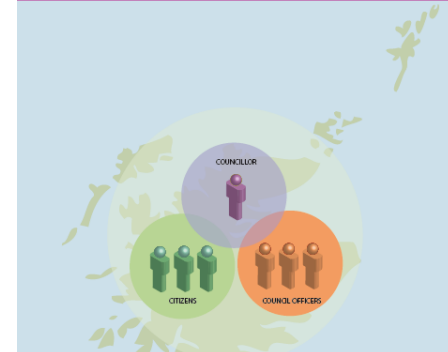
**Bricks-Mortar-Money**  
Property investment as a potential means of securing an additional and sustainable source of revenue



**The impact of devolution upon frontline services**



**Doing local politics in Scotland**  
Councillors, officers and communities



**Neighbourhood Services Poll**



# Latest Research (1)

## Accountability and scrutiny – the issues for local government in a changing political environment

As the shape of public services and institutions evolve, and in times of economic uncertain and major changes like Brexit, the responsiveness of local public services will be critical. The public have a right to know how major decisions are made, what might be expected in terms of outcomes, and how public services can work to improve lives and places.

This report by APSE and the Centre for Public Scrutiny (CfPS) examines the role of good governance and scrutiny, highlighting how this is critical to the local government decision-making process.

## Accountability and scrutiny

The issues for local government in a changing political environment



# Latest Research (2)

[www.apse.org.uk](http://www.apse.org.uk)

## Governing in and against austerity: International lessons from eight cities

This international research study conducted as a collaborative approach led by De Montfort University explores responses to austerity in leading European Cities analysing responses and the impact of austerity policies at a municipal level.

Paul O'Brien, APSE's Chief Executive, was a member of the project team, which is comprised of an international consortium of investigators and research assistants, representing eight countries and ten institutions.

A free PDF is available on the APSE website.



## GOVERNING IN AND AGAINST AUSTERITY: INTERNATIONAL LESSONS FROM EIGHT CITIES



Professor Jonathan S. Davies  
Director - Centre for Urban Research on Austerity  
De Montfort University, Leicester, UK

# Latest Research (3)

## The impact of devolution upon frontline services

The latest research developed by APSE and the **Centre for Local Economic Strategies (CLES)** explores the impact that devolution in England is having upon the provision and delivery of frontline services in local government. The report, *The impact of devolution upon frontline services*, highlights that as devolution has evolved over the last few years and deals have been agreed between localities and Government, the debate has been remiss of any conversation about frontline services. We explore how frontline service provision has been and could further be affected by devolution now and in the future and why frontline services should be considered as a core component of the debate as it moves forward.

## The impact of devolution upon frontline services





# Latest Research (4)

## Neighbourhood Services Poll – strong public support for housing safety inspections to be in the hands of local councils

A new poll carried on behalf of APSE by polling company Survation finds that the public are almost three times more likely to support local councils being responsible for local Buildings Inspections work rather than private inspectors. The poll found 59% of the public support council Building Inspections, and just 23.4% support private inspectors.

The poll makes an interesting assessment of public trust in housing safety following the tragedy of Grenfell Tower. Interestingly, support is highest amongst Conservative voters with 63.9% supporting councils as the Building Inspectors.

## Neighbourhood Services Poll



**Survation.**



## Redefining Neighbourhoods: Beyond Austerity

Available now on the APSE website

Redefining neighbourhoods: Beyond austerity will look at how local authority frontline strategies need to evolve as funding diminishes and social care needs increase. The programme will also bring to life investment strategies that lead to a more self-sufficient and sustainable future.

'REDEFINING  
NEIGHBOURHOODS:  
Beyond austerity'





# Advocacy

- APSE Representative on the Executive Committee of Scottish Waste Industry Training, Competency and Health & Safety forum (SWITCH)
- Steering Group for Code of Practice on Litter and Refuse – Zero Waste Scotland/Scottish Government  
(Also hosting the Litter Managers Network meetings with Zero Waste Scotland)
- APSE Representatives on the Scottish Government Nursery Milk Scheme Short-Term Working Group
- Continued representation at Party Political Conferences
- Continuing to strengthen relationships with other organisations

# Network Queries

- Our network queries service allows you to ask your peers in other Councils questions and receive information and advice.
- Queries are sent out via e-mail anonymously and any member is eligible to use this service.
- Responses are typically collated within a month.
- If you would like to send out a query, please contact Garry at [GLee@apse.org.uk](mailto:GLee@apse.org.uk) or call 01698 459051.

- **Now have 71 local authority members (15 in Scotland)**  
(Aberdeen, Angus, Clackmannanshire, East Dunbartonshire, East Lothian, Falkirk, Fife, Glasgow, Highland, Midlothian, North Ayrshire, Orkney, Shetland, South Lanarkshire, West Lothian)
- **Update to the Scottish Solar PV Toolkit**  
Available now.
- **Upcoming events**  
22<sup>nd</sup> November, North Ayrshire (district heating workshop)
- **Energy consultancy support is available – Contact Phil at [pbrennan@apse.org.uk](mailto:pbrennan@apse.org.uk) / 0161 772 1810**

# Solutions

- ▶ Solutions can provide consultancy support across the full range of council services, but in particular front line services.
- ▶ Solutions can provide help and expertise within a number of areas, the main ones including:-
  - Efficient use of resources
  - Income generation
  - Demand side measures
- ▶ Branching out across the Interim Management side, with several new Associates now joining, specialists in Roads & Highways, Bereavement Services, Building Maintenance, Facilities & Leisure and Parks and Open Spaces. For any Interim requirements, please contact Emma Taylor, Client Coordination Officer - 0161 722 1810 or [etaylor@apse.org.uk](mailto:etaylor@apse.org.uk)

# Training Events

<b>Highway Liability</b>	<b>24/11/2017</b>	<b>Glasgow</b>	<a href="#">More info</a>
<b>Identifying Damp, Timber Mould and Structural Problems</b>	<b>28/11/2017</b>	<b>Glasgow</b>	<a href="#">More info</a>
<b>Catering Tenders</b>	<b>18/12/2017</b>	<b>Glasgow</b>	<a href="#">More info</a>
<b>Project Management in Local Government</b>	<b>26/01/2018</b>	<b>Edinburgh</b>	<a href="#">More info</a>
<b>Principles of Contract Management</b>	<b>05/02/2018</b>	<b>Edinburgh</b>	<a href="#">More info</a>
<b>Principles of Fleet Management</b>	<b>07/02/2018</b>	<b>Edinburgh</b>	<a href="#">More info</a>
<b>Health and Safety in Waste and Environmental Services</b>	<b>14/02/2018</b>	<b>Glasgow</b>	<a href="#">More info</a>
<b>Supervisory Skills for Team Leaders in Frontline Services</b>	<b>27/03/2018</b>	<b>Edinburgh</b>	<a href="#">More info</a>
<b>Developing a customer focused service culture</b>	<b>28/03/2018</b>	<b>Glasgow</b>	<a href="#">More info</a>

Courses can also be delivered in-house for up to 25 staff.

Contact Jan Kennedy for more information at [jkennedy@apse.org.uk](mailto:jkennedy@apse.org.uk) / 0161 772 1810



# Seminars

<b>Scottish Soft Facilities Management Seminar</b>	<b>Cumbernauld, 23 November 2017</b>
<b>Parks and Open Spaces Seminar</b>	<b>London, 30 November 2017</b>
<b>Performance Networks Seminar</b>	<b>Blackpool, 7 and 8 December 2017</b>
<b>Catering, Facilities Management and Building Cleaning Seminar</b>	<b>Durham, 25 and 26 January 2018</b>
<b>Scottish Building, Housing and Renewables Seminar</b>	<b>Dunblane, 22 and 23 February 2018</b>
<b>Highways Seminar</b>	<b>Blackpool, 22 and 23 March 2018</b>
<b>Scottish Fleet, Waste and Grounds Seminar</b>	<b>Aviemore, 16 to 18 May 2018</b>

## Contact details

**Garry Lee, Acting Principal Advisor, APSE Scotland**

**Email: [GLee@apse.org.uk](mailto:GLee@apse.org.uk)**

**Phone: 01698 459051**

**Association for Public Service Excellence**  
Brandon House Business Centre, Unit 18-20, 23/25  
Brandon Street, Hamilton.  
**telephone:** 01698 459 051  
**fax:** 01698 200 316  
**web:** [www.apse.org.uk](http://www.apse.org.uk)